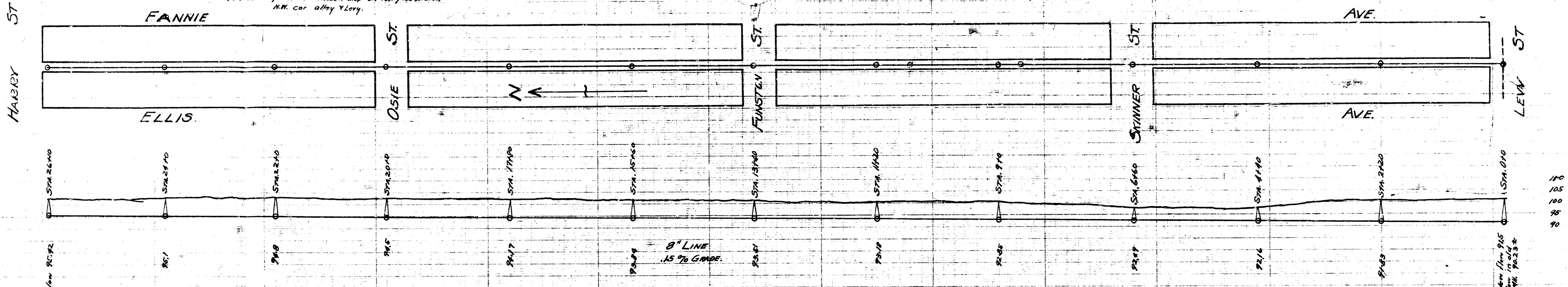


LAT. 6, DIST. C
S.S. No. 20

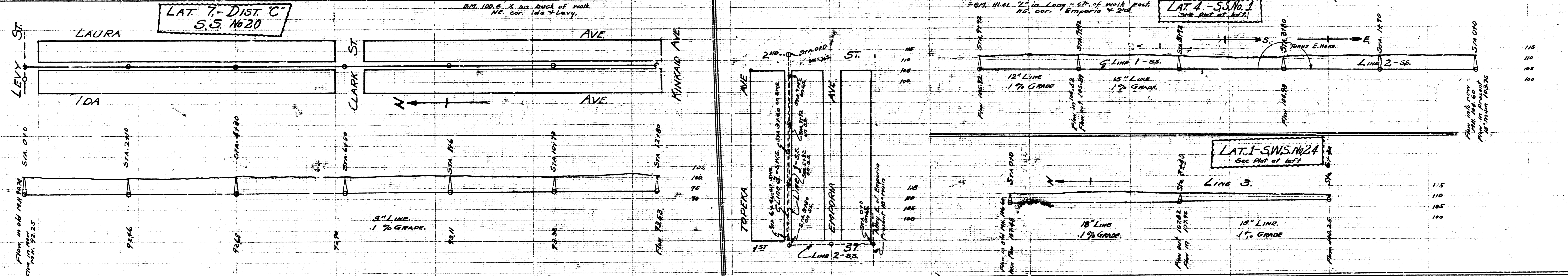
B.M. 101.80 "K" in Kenzie bk. of walk St. cor. Fannie & Harry
104.53 Top of 1st Mason step on Tel. pole (N. side)
N.H. cor. alley & Levy.



LAT. 7 - DIST. C
S.S. No. 20

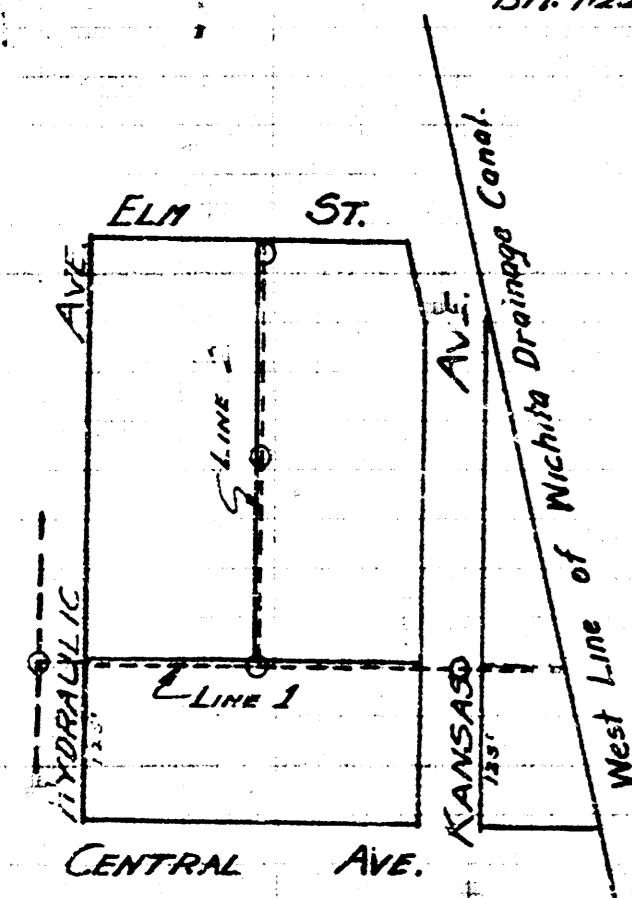
LAT. 4 - S.S. No. 1
See Part of left

LAT. 1 - S.S. No. 24
See Part of left



B.M. 102.24 "L" in Reference - Ch. of Wk. E.
N.H. cor. Hydraulic & Central.

B.M. 120.66 S. Bolt on H.R. front
N.H. cor. Rutan & Holyoke.



LAT. 7 - S.S. No. 20

LAT. C - DIST. 1
S.S. No. 12

