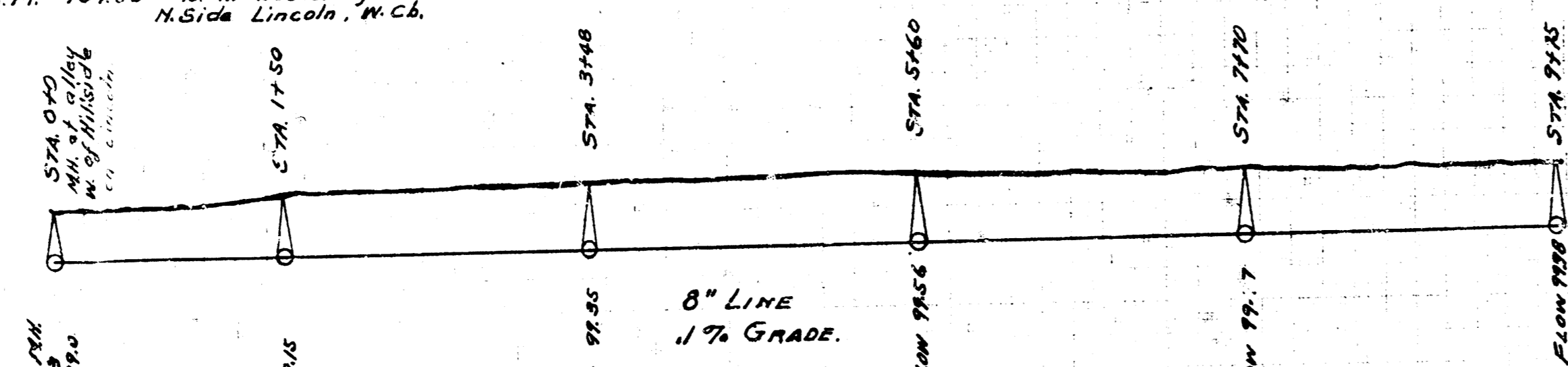
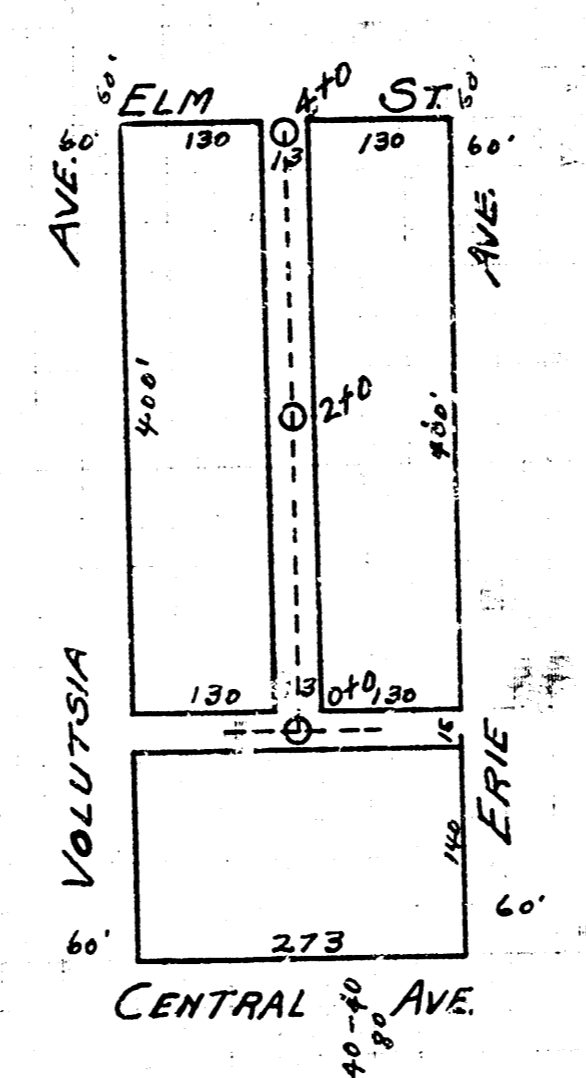


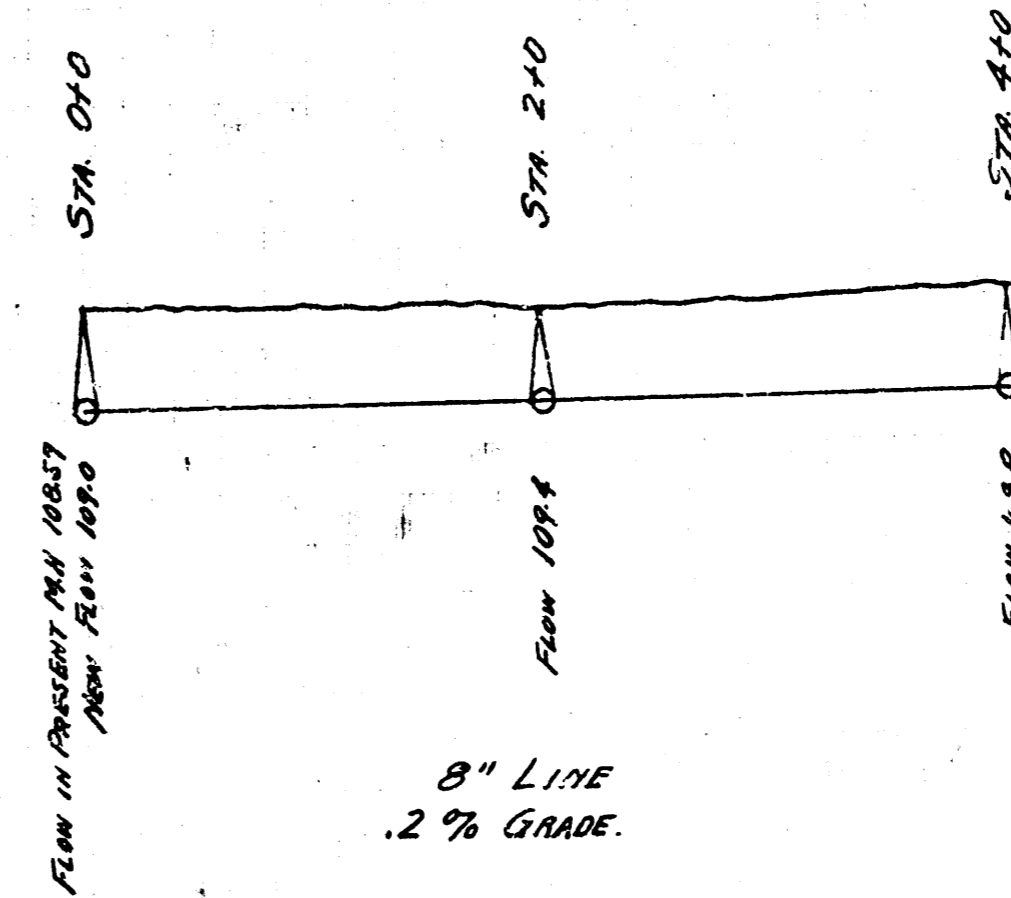
B.M. 107.80 B. in Buckbridge N. Side Lincoln, N.C.



LAT. A., DIST. 4,
S.S. No. 12

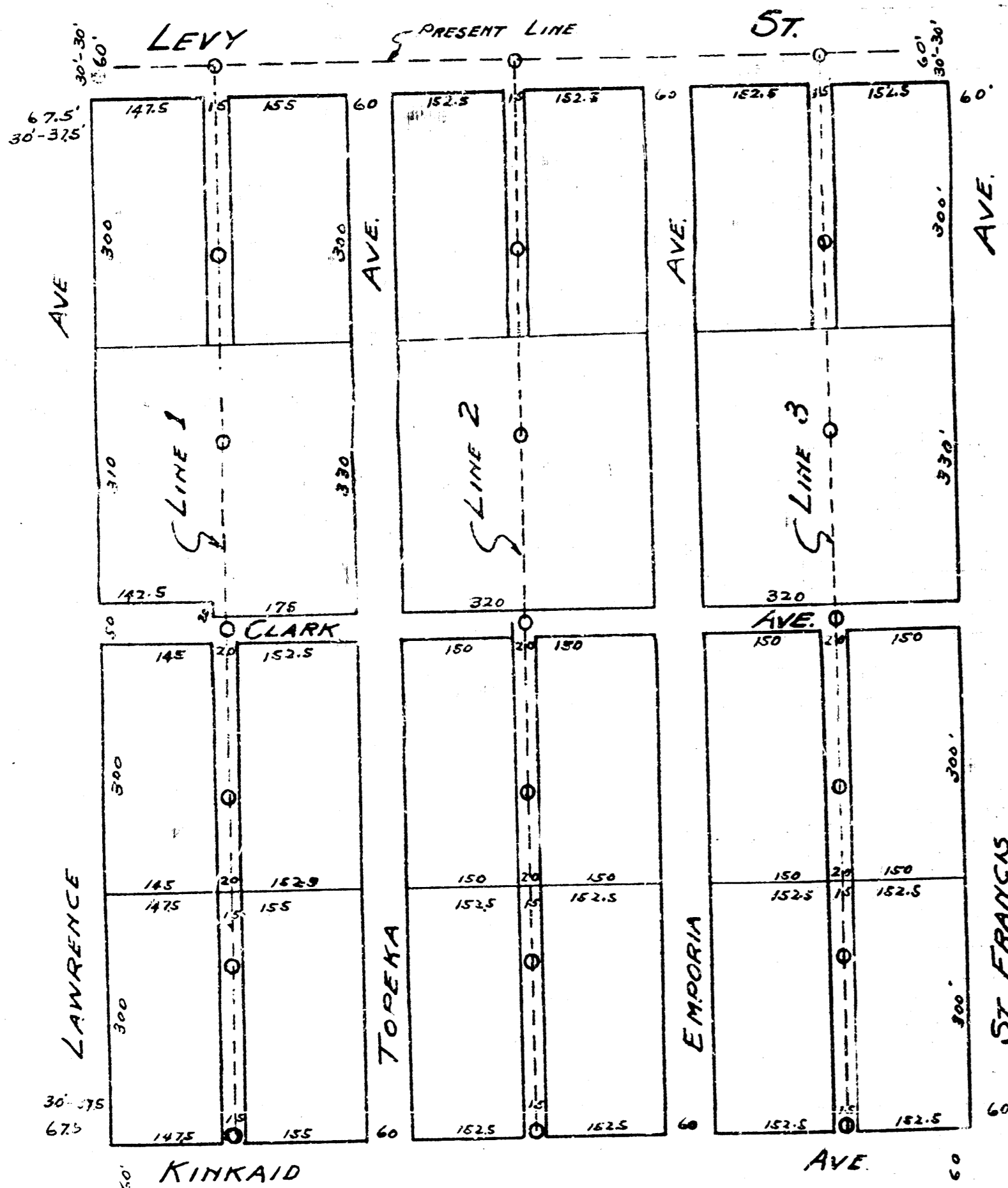


B.M. 122.73 K in Kenster, cr. walk w. SW. cor. Volusia & Central.



LAT. E., DIST. D.,
S.S. No. 12

B.M. 99.60 Stand. RW. cor. Lawrence & Levy.



LAT. 11, DIST. C.,
S.S. No. 20.

