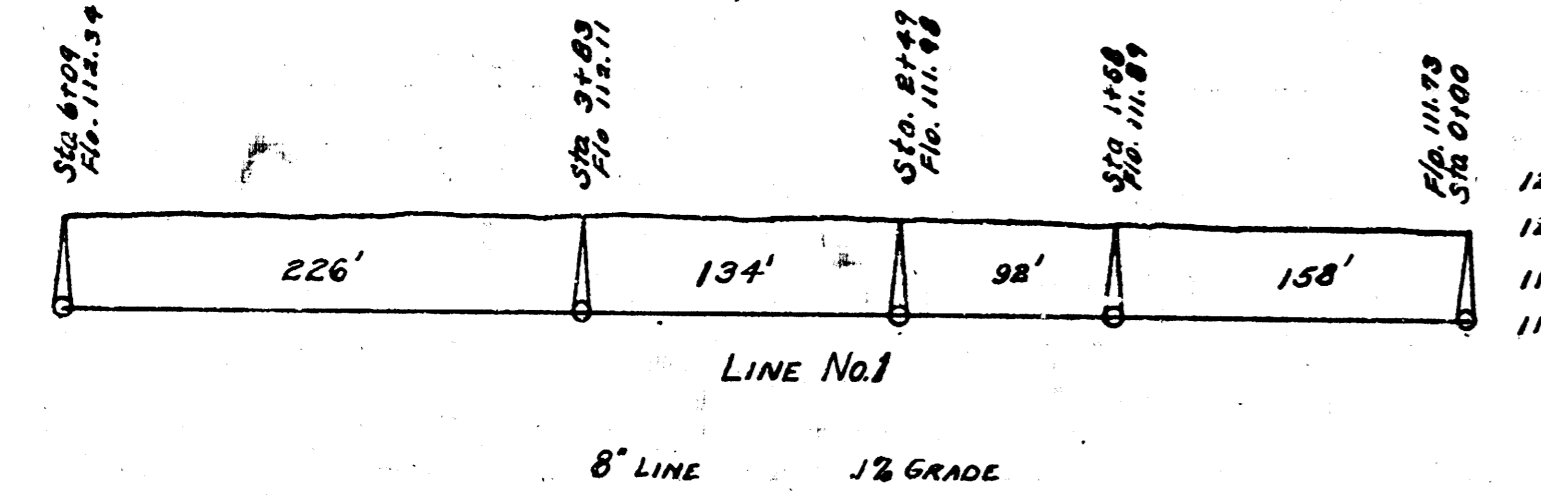
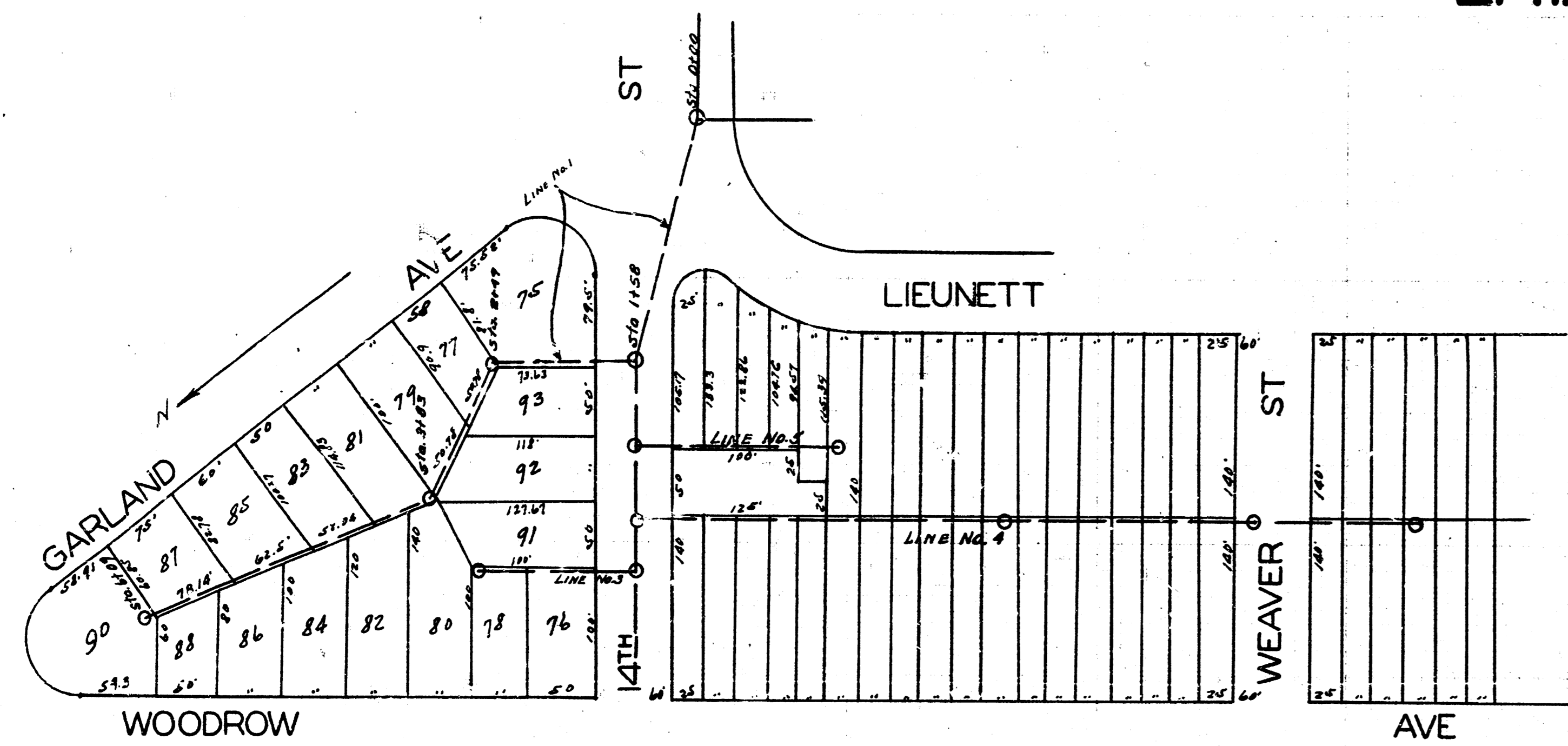
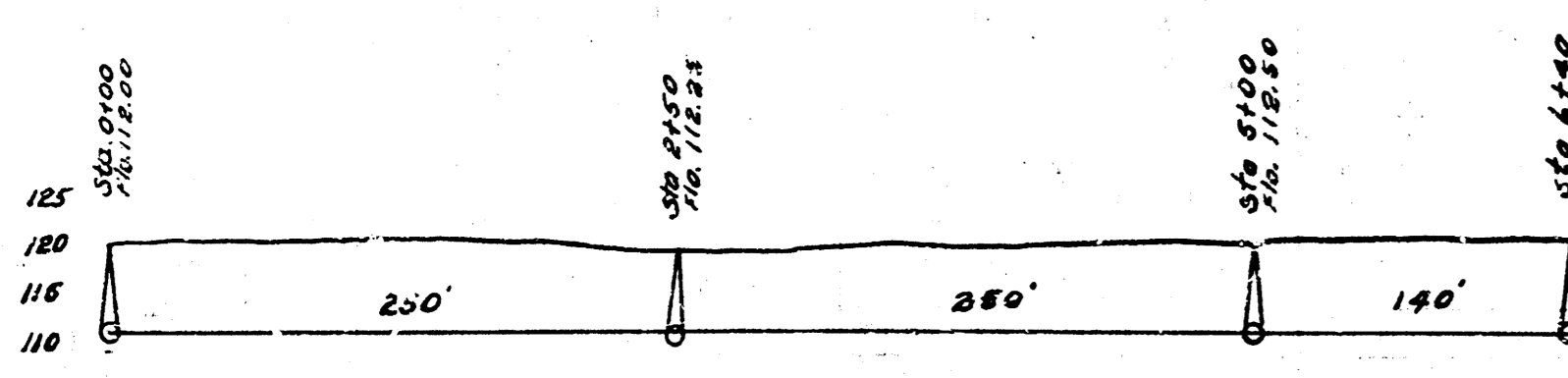


LAT. M, DIST. R, S.S. 20.

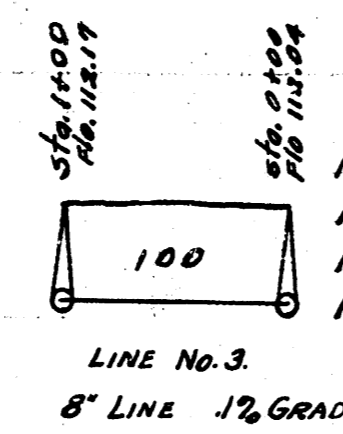
SHEET 1



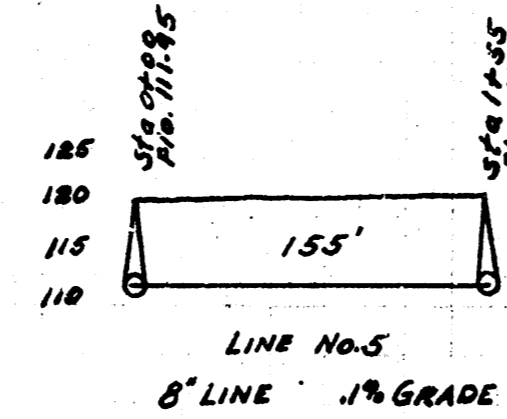
B.M. Elev. 12022 - Top of iron cen. 14th & W.L. Garland



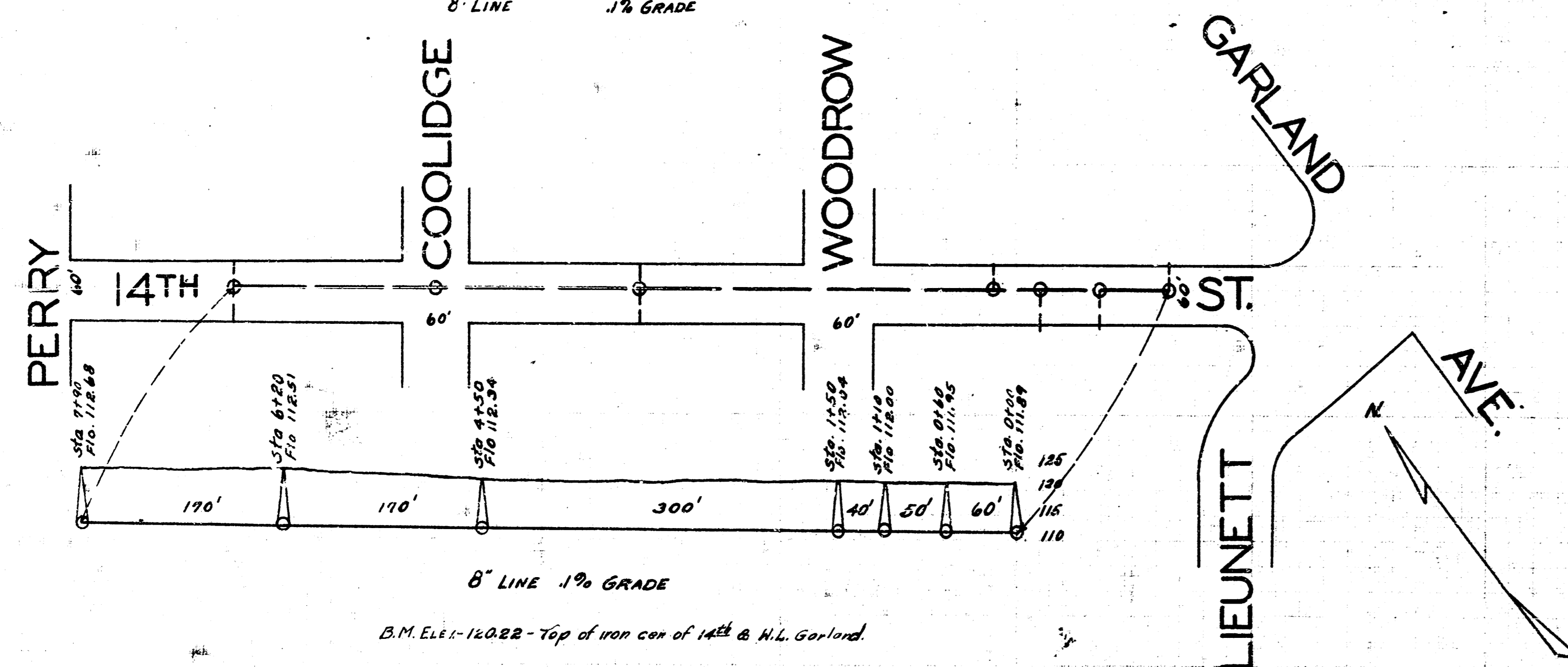
LINE No. 4
8" LINE 1/2% GRADE



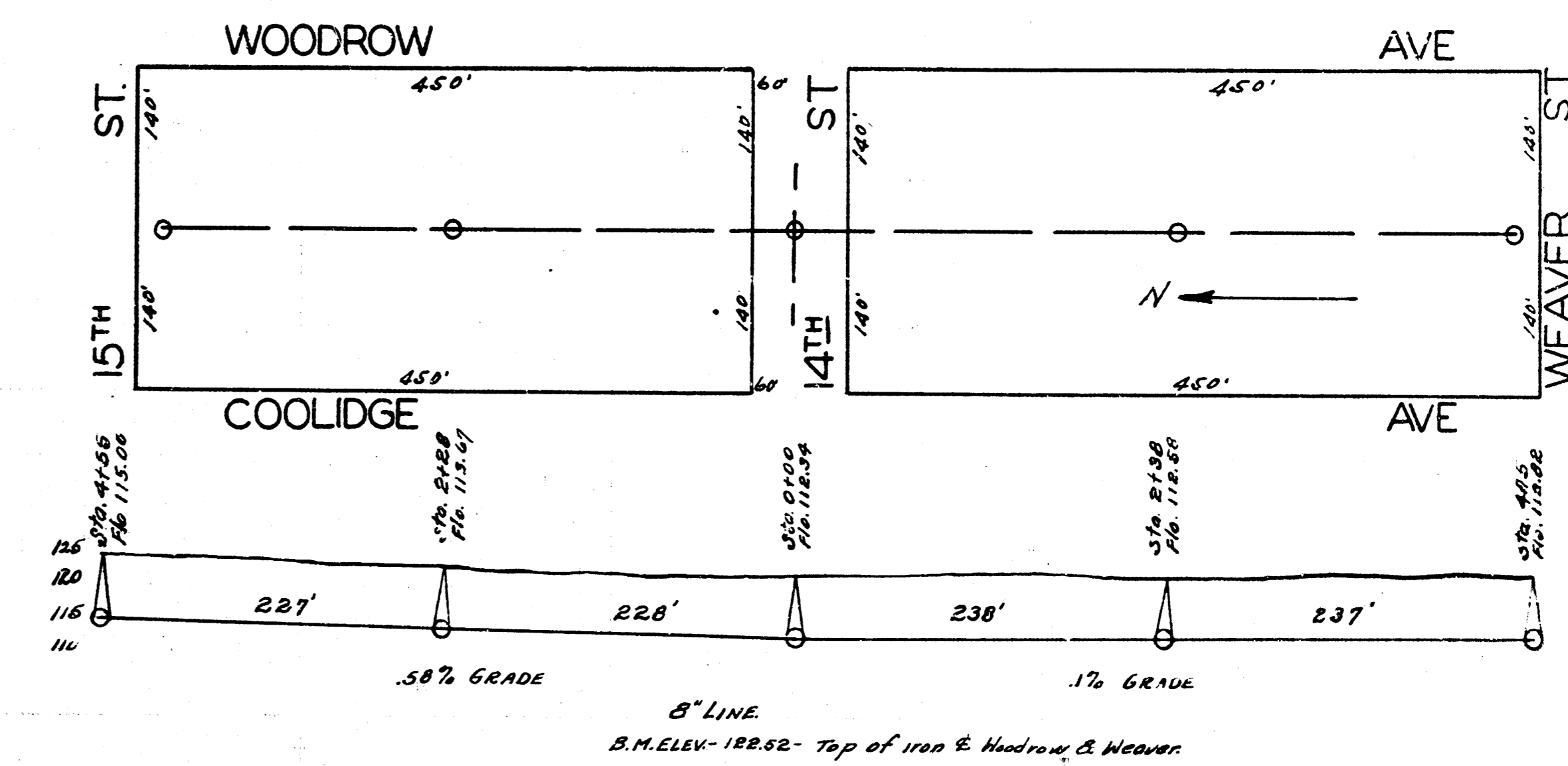
LINE No. 3
8" LINE 1/2% GRADE



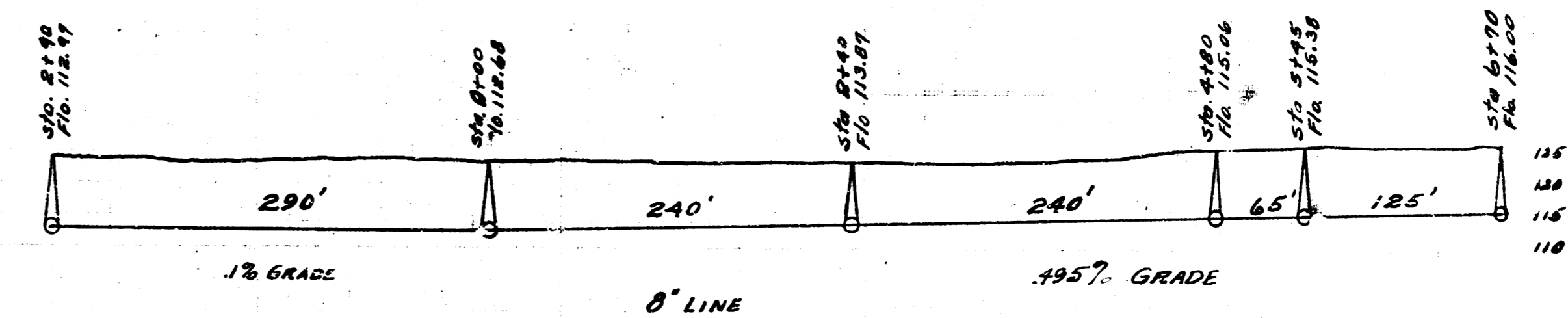
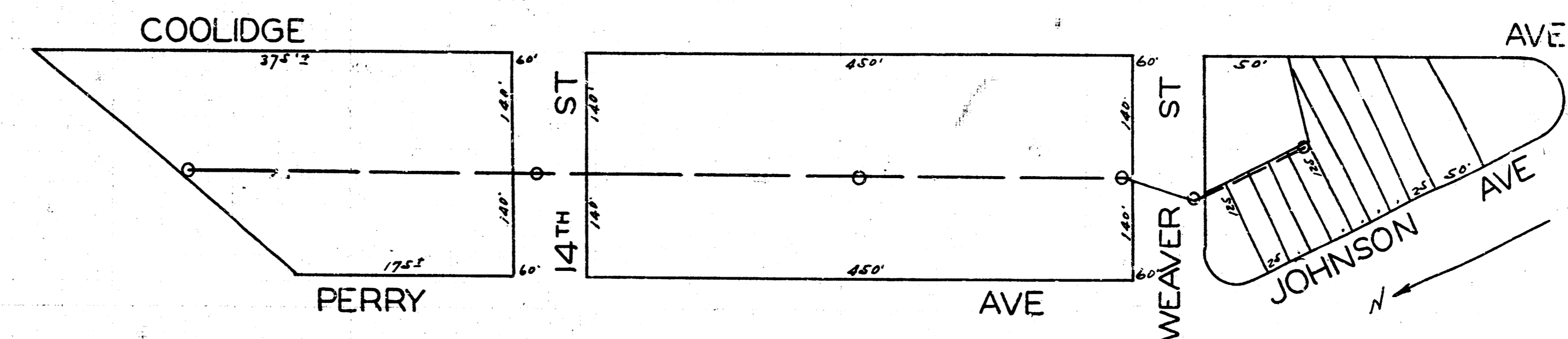
LINE No. 5
8" LINE 1% GRADE



8" LINE 1% GRADE
B.M. Elev. 12022 - Top of iron cen. of 14th & W.L. Garland

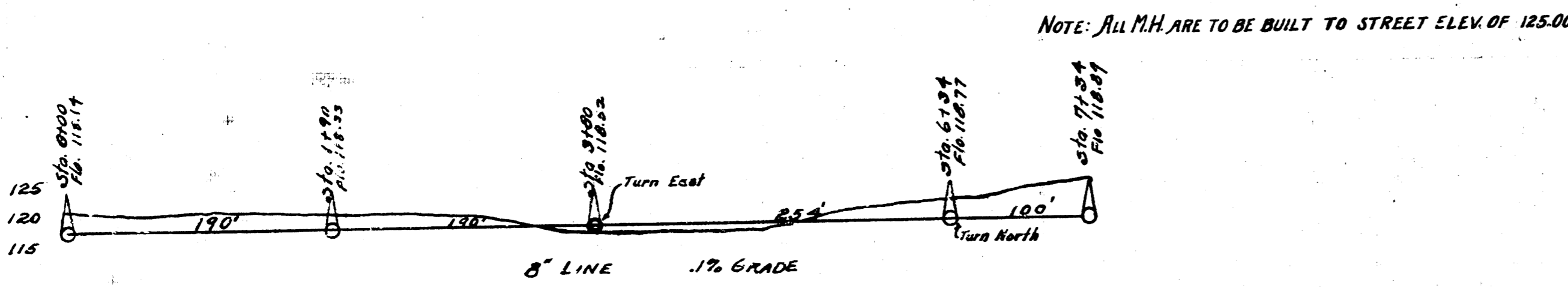
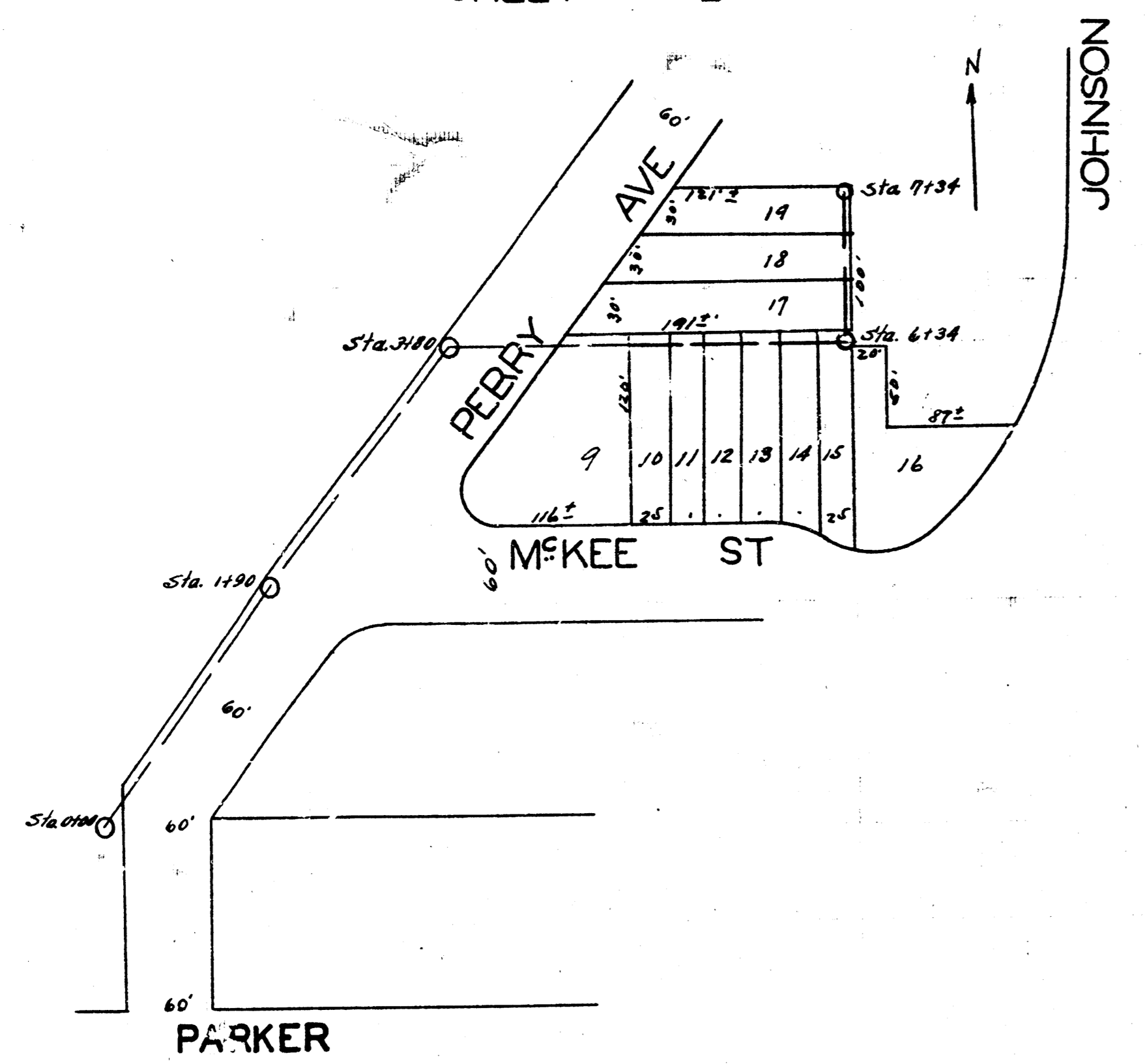


8" LINE
B.M. Elev. 12252 - Top of iron S. Woodrow & Weaver



8" LINE
B.M. Elev. 12350 - Top of iron S. Coolidge & Weaver

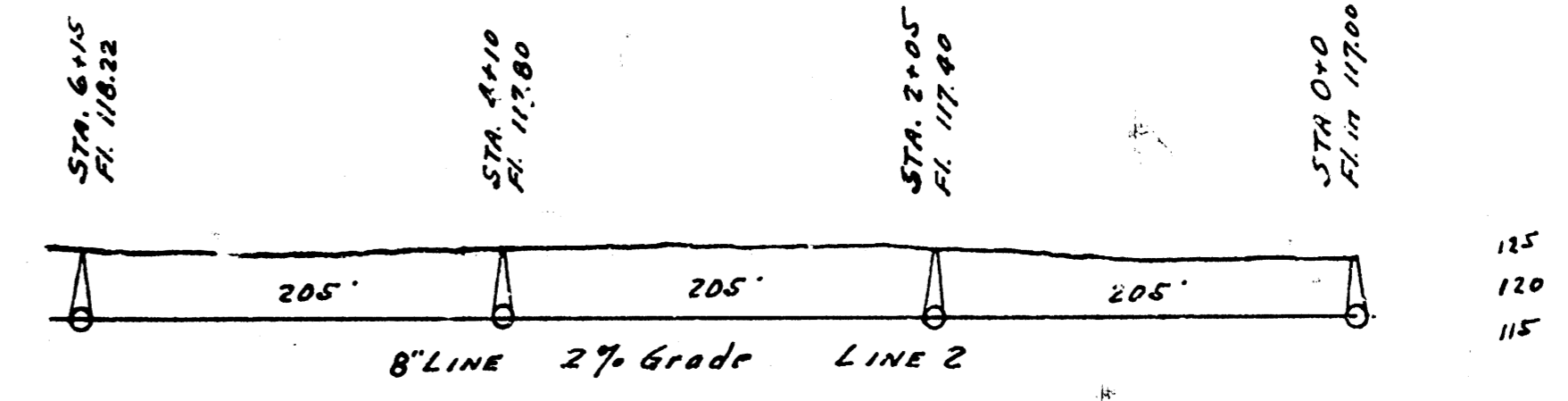
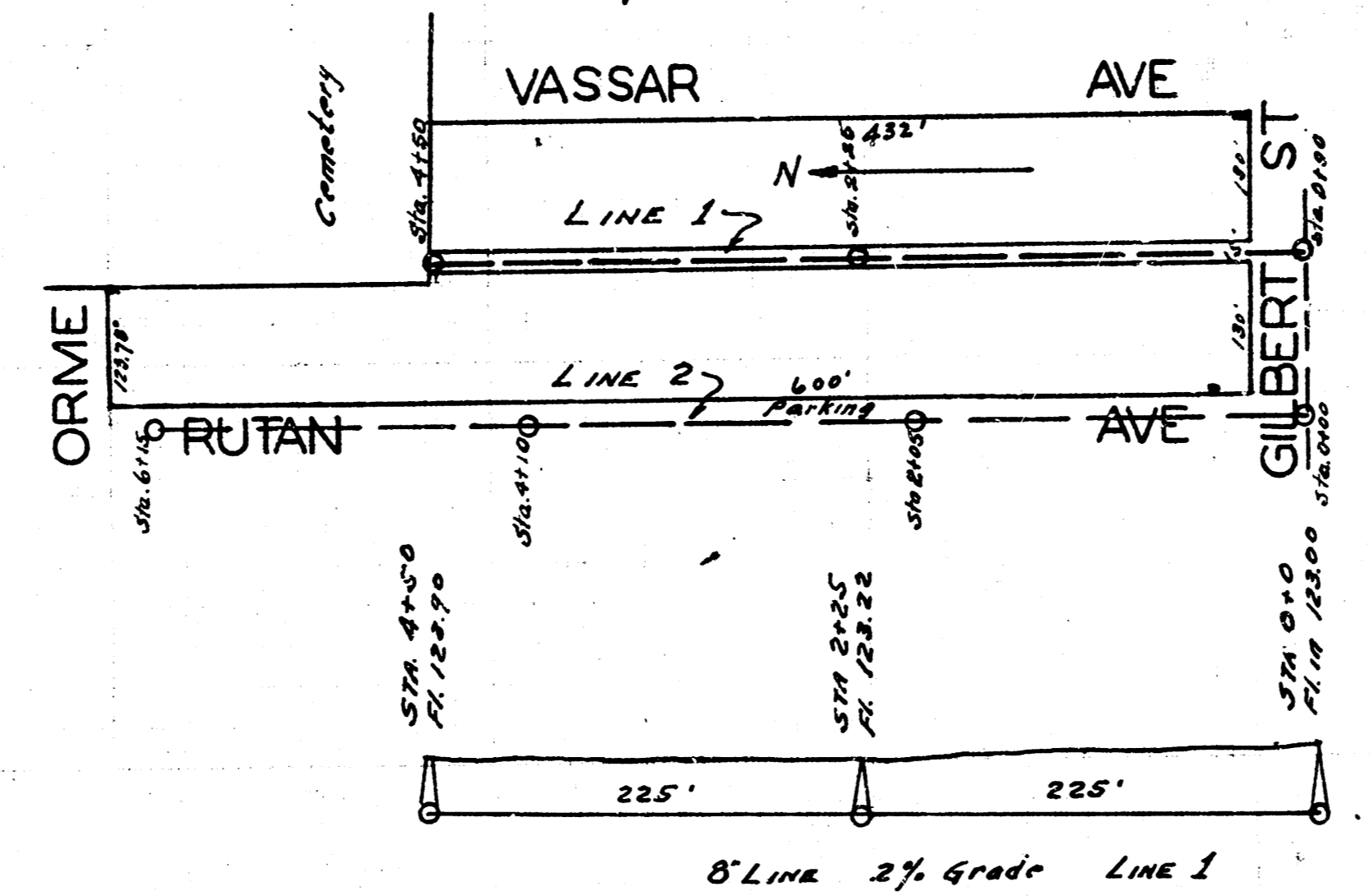
LAT. M, DIST. R, S.S. 20.
SHEET 2



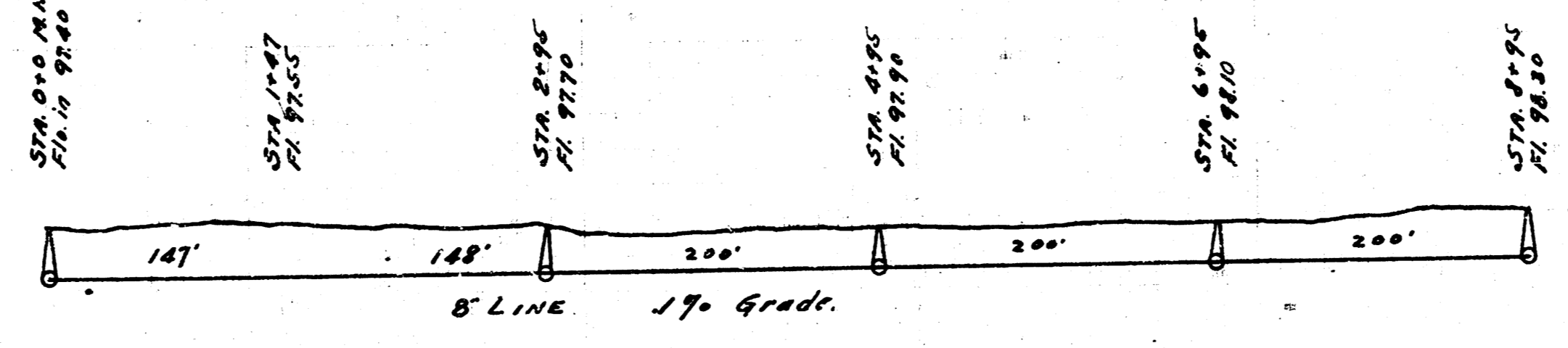
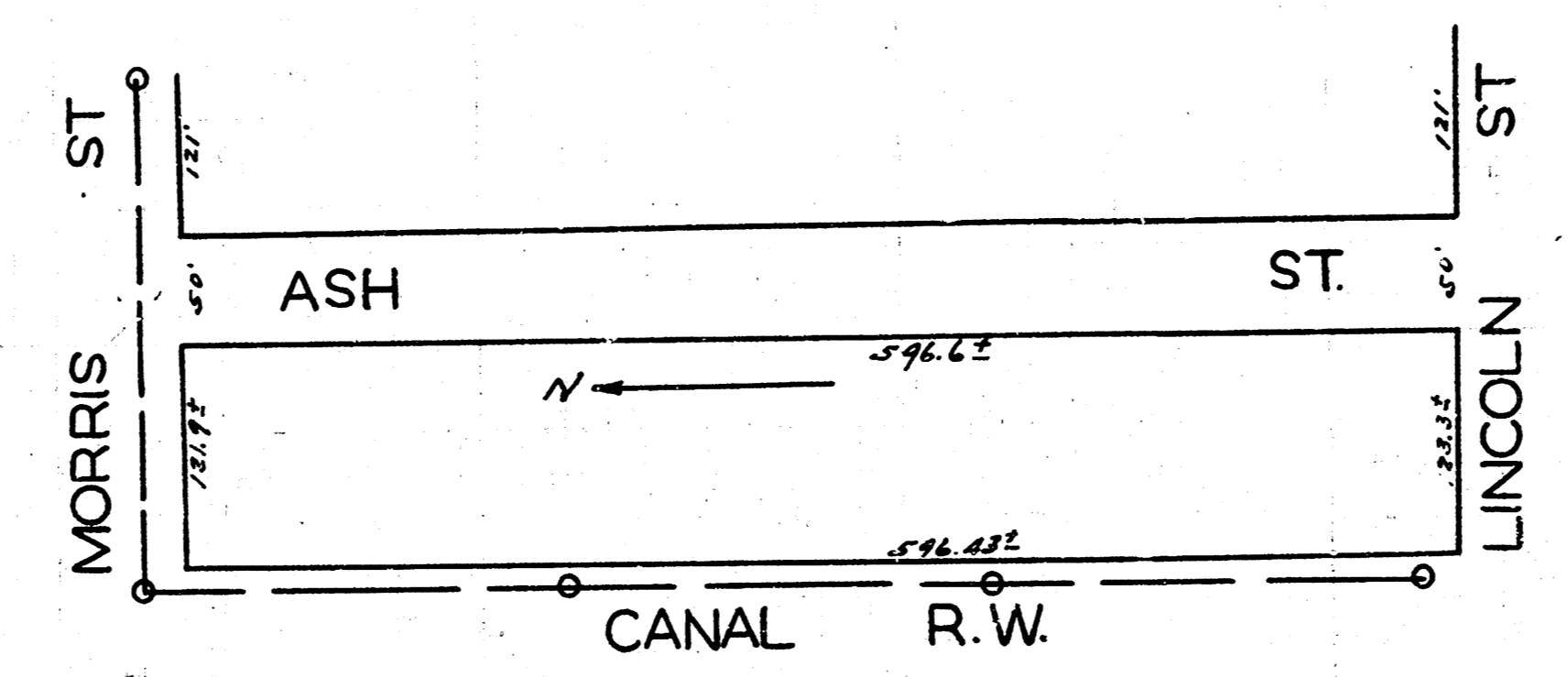
B.M. ELEV. 120.82 - Top of iron N.S. of Garland and 4 of 14th
121.48 - N. side of rim. 1' N. of N.S. of Perry & 116' N. of Parker

NOTE: All M.H. ARE TO BE BUILT TO STREET ELEV. OF 125.00

LAT. G, DIST. 6, S.S. 12.



B.M. Elev. 122.18 P in Pollack frt. W. W. NW. Rutan + Orme.



B.M. Elev. 102.97 + on cb N. of C.R. N. of Bdwg on W.C. Madison.

LAT. A, DIST. 5, S.S. 12.