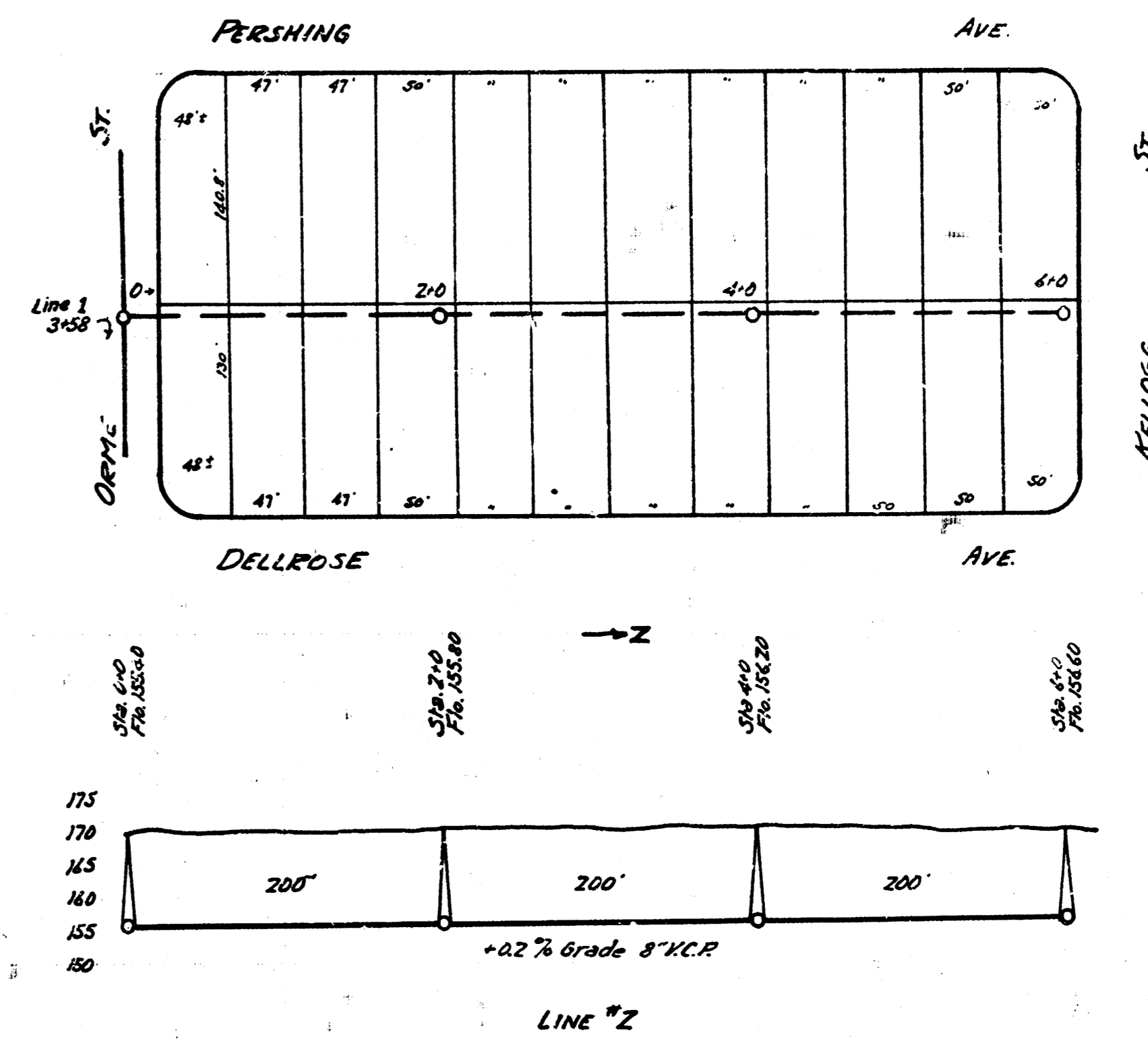
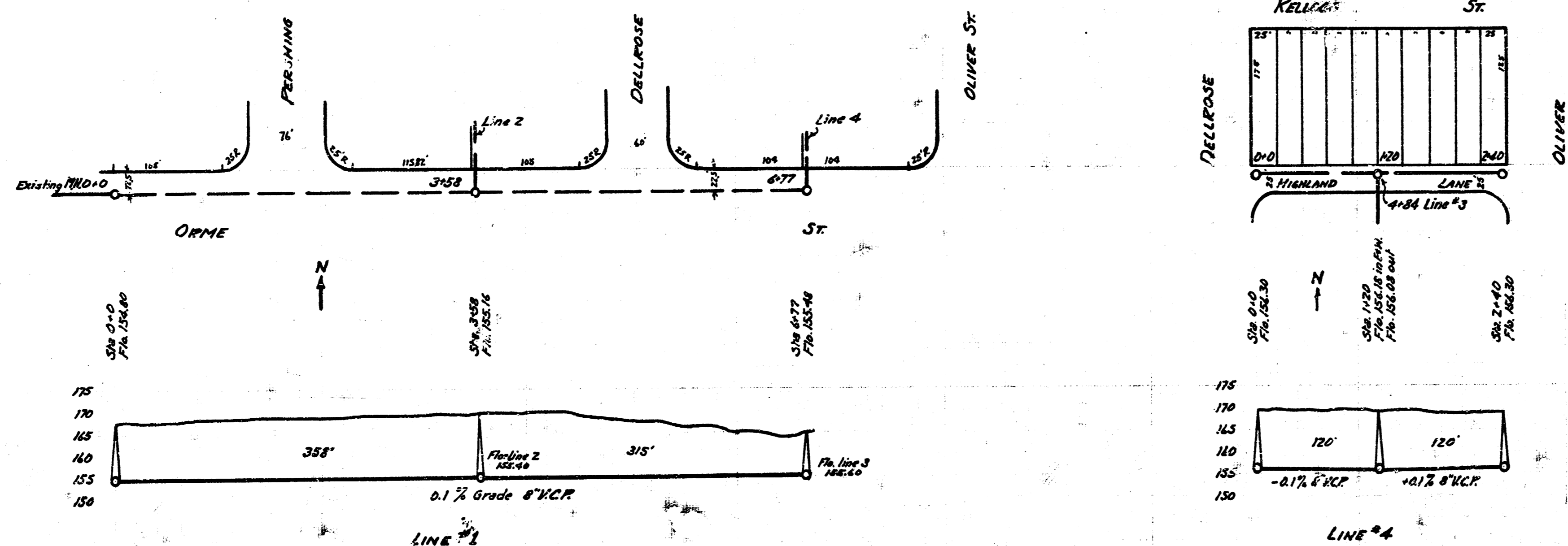


DIST. 7 S.S. #12

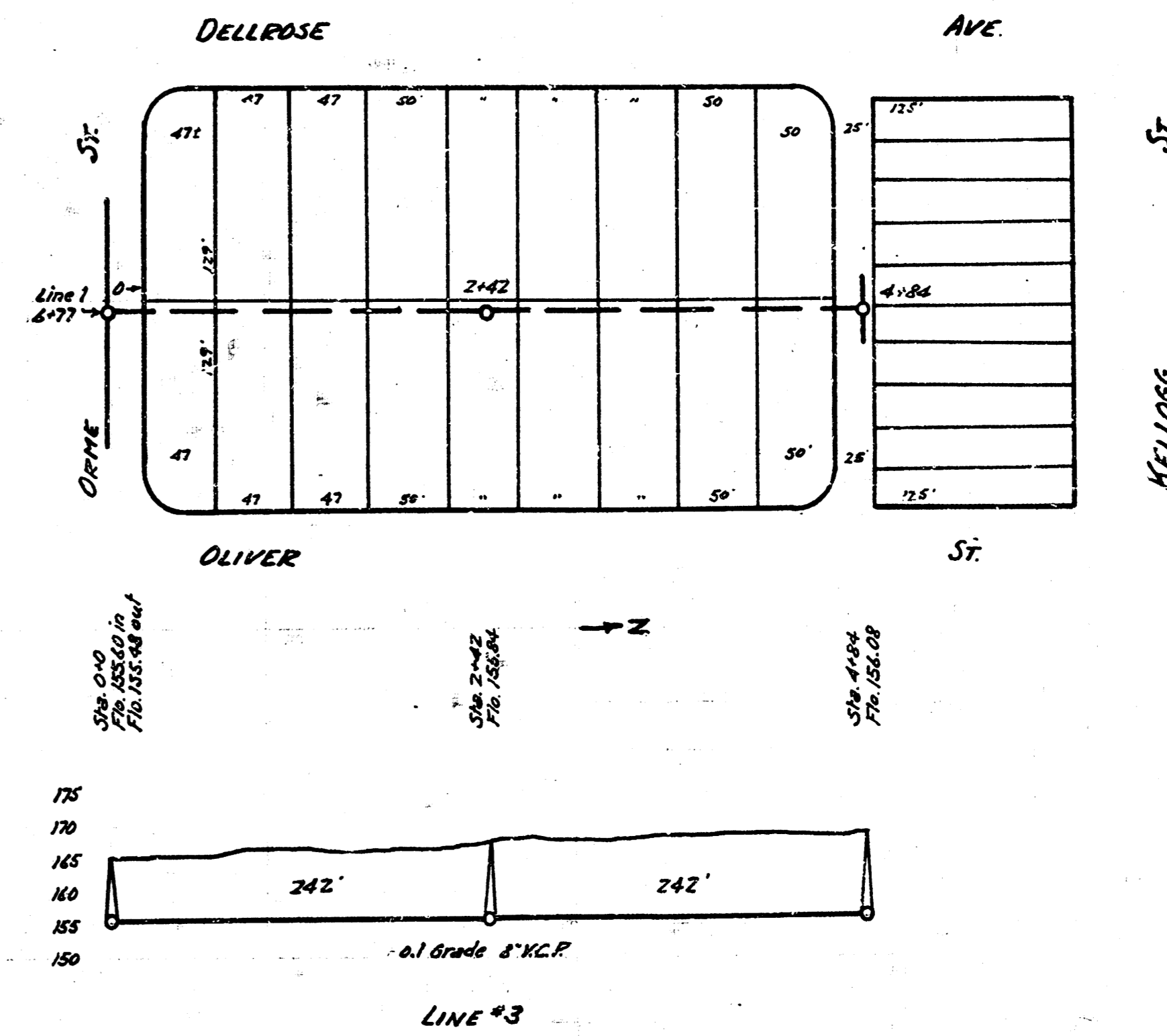
B.M. Elev. 115.31 5' in Bull c. of N.H. N.M. cor. Plat 492



LAT. U DIST. 6 S.S. #12



B.M. Elev. 155.41 Iron MS Orme 25' E. E.S. Dellrose



ENGINEERING DEPARTMENT
CITY OF WICHITA, KANSAS
PL. BRACKWAY CITY ENGINEER
8-1332 DRAWN BY GJ