

HARRY

ST.

N

1" = 100'

PARK

LINWOOD

1	2
3	4
5	6
7	8
9	10
11	12
13	14
15	16
17	18
19	20
21	22
23	24
25	26
27	28
29	30
31	32
33	34
35	36
37	38
39	40
41	42
43	44
45	46
47	48

OSIE ST.

1	2
3	4
5	6
7	8
9	10
11	12
13	14
15	16
17	18
19	20
21	22
23	24
25	26
27	28
29	30
31	32
33	34
35	36
37	38
39	40
41	42
43	44
45	46
47	48

ARCH ST.

LAYOUT PLAN  
LAT. 18 SS 20  
1940

FRANCES AVE.

HYDRAULIC AVE.

MINNESOTA AVE.

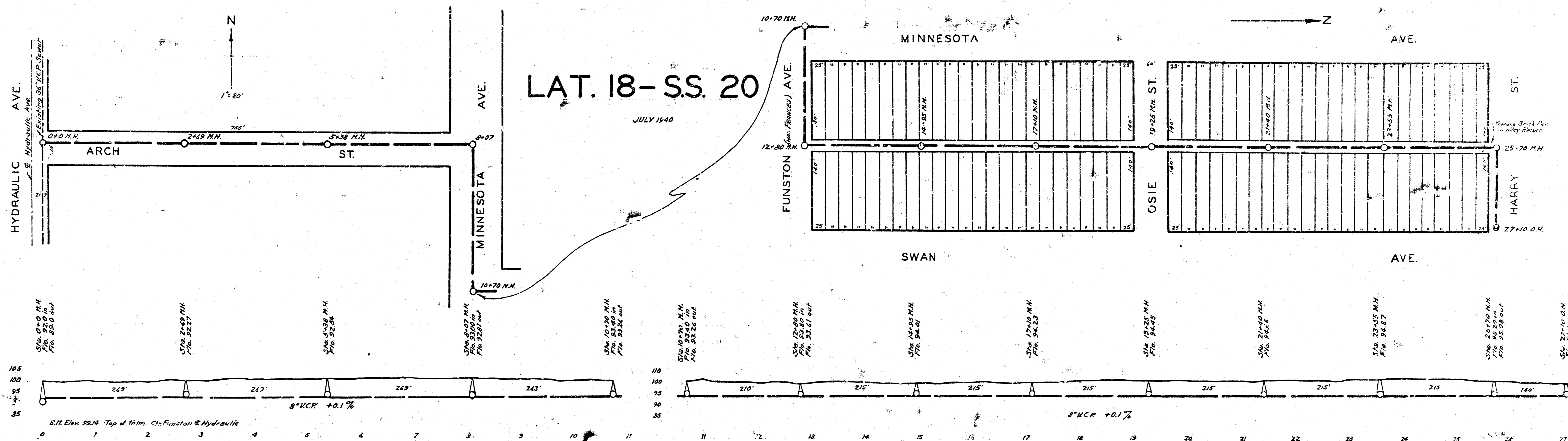
SWAN AVE.

HYDRAULIC AVE.

MINNESOTA AVE.

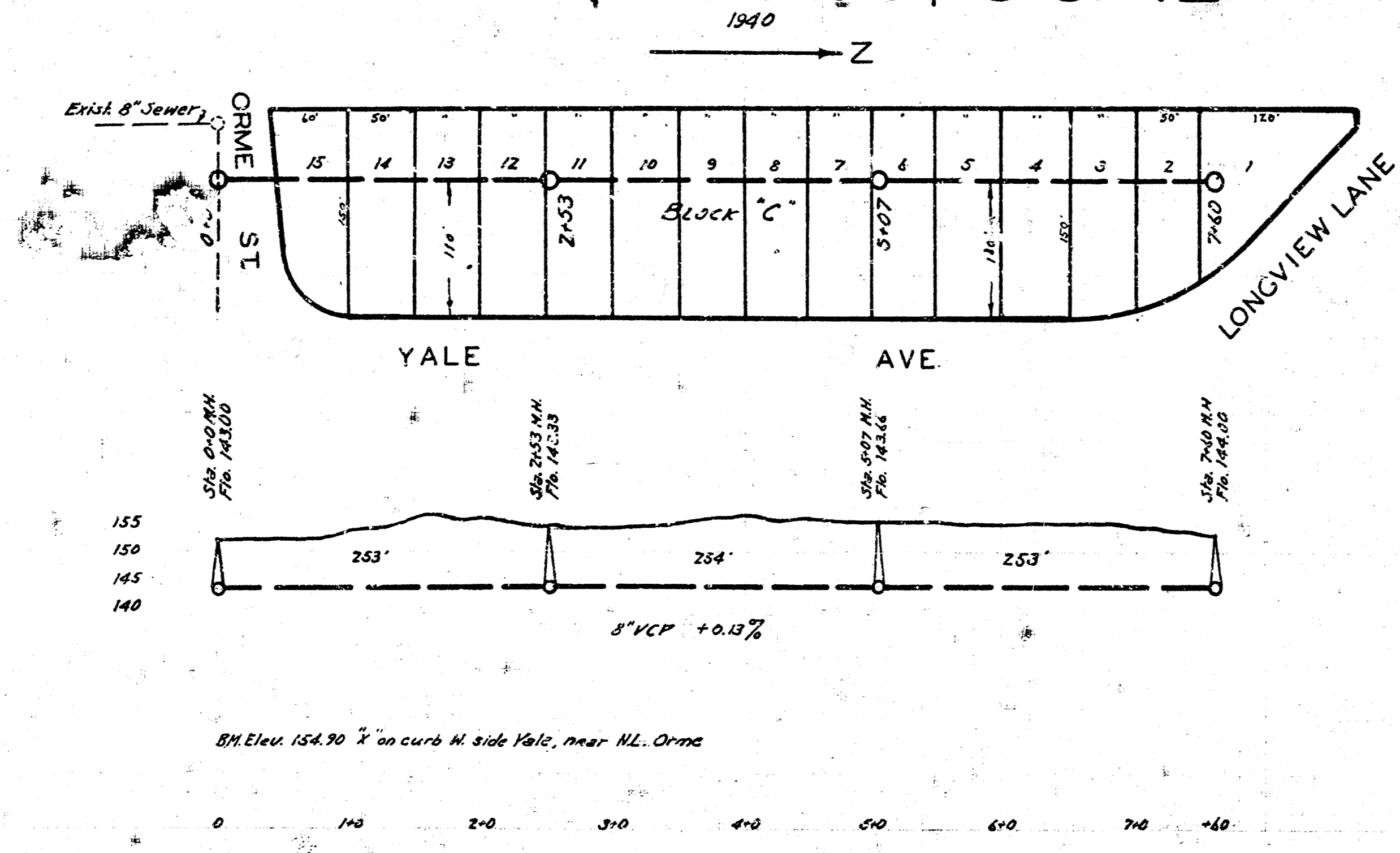
SWAN AVE.

Existing 36" D.C.F. Sewer 2'



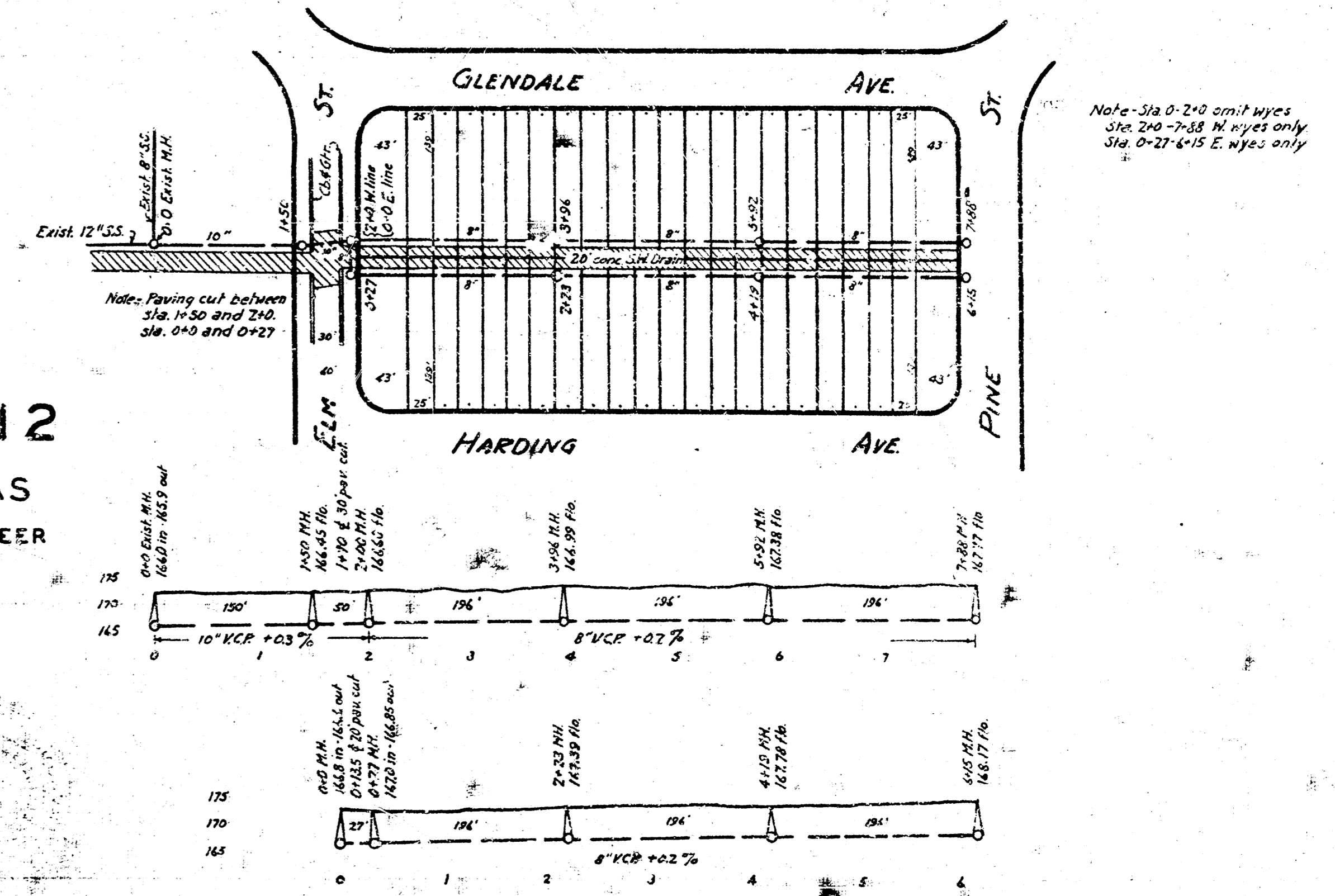
ENGINEERING DEPARTMENT  
CITY OF WICHITA, KANSAS  
P. L. BROCKWAY CITY ENGINEER  
JULY 1940 DRAWN BY *BCW*

LAT. W, DIST. 6, S.S. #12



LAT. X  
DIST. 6, S.S. #12

WICHITA, KANSAS  
P. L. BROCKWAY - CITY ENGINEER  
NOVEMBER 1940  
SCALE 1"=100'



B.M. Elev. 174.85 S.M. of coping curbs  
located on 1st St. Avenue  
east of Buckley Drive.

Note - See 0-210 and 0-211  
See 0-210 and 0-211  
See 0-210 and 0-211