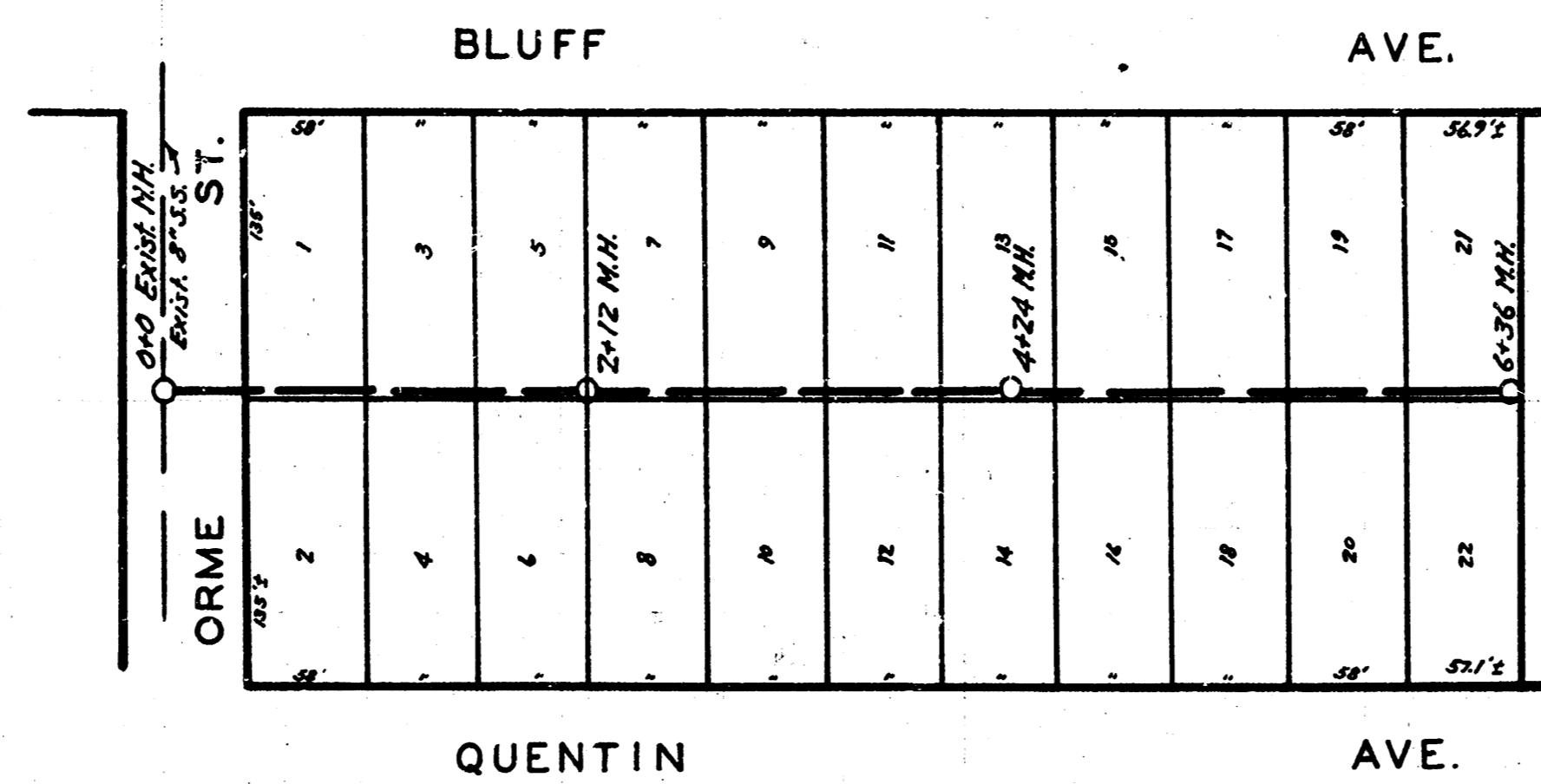
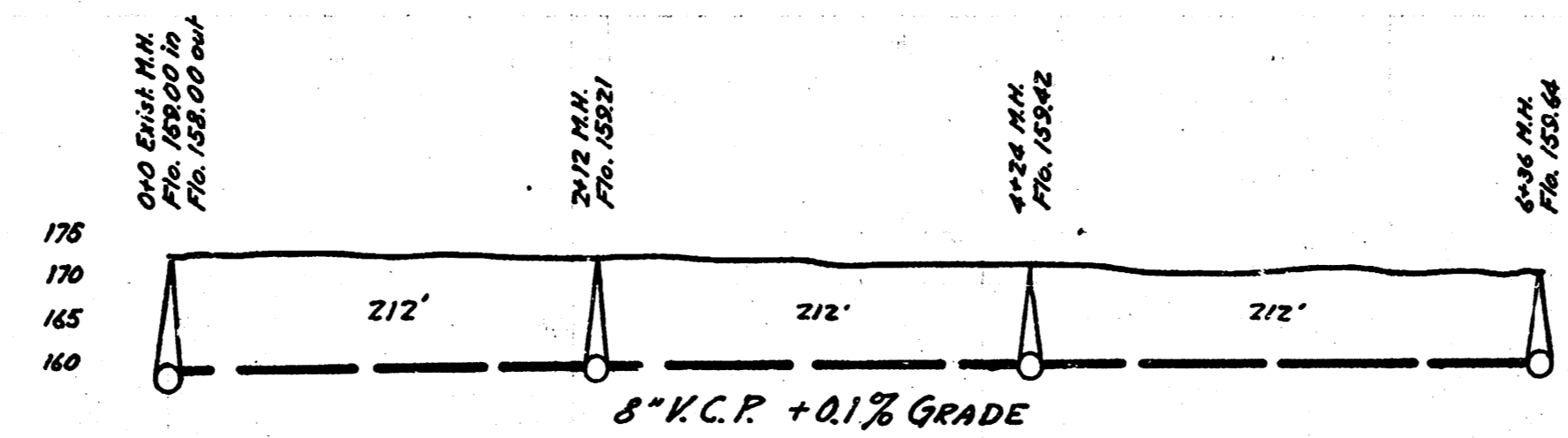


LAT. 1, DIST. 6, S.S. #12
 WICHITA, KANSAS



N ←

B.M. Elev. 174.35 - Manhole rim Center Orme St. & Quentin



ENGINEERING DEPARTMENT
 CITY OF WICHITA, KANSAS
 P. BROCKWAY CITY ENGINEER
 B.E. SMITH OFFICE ENGINEER
 MARCH 1941 SCALE 1"=30'