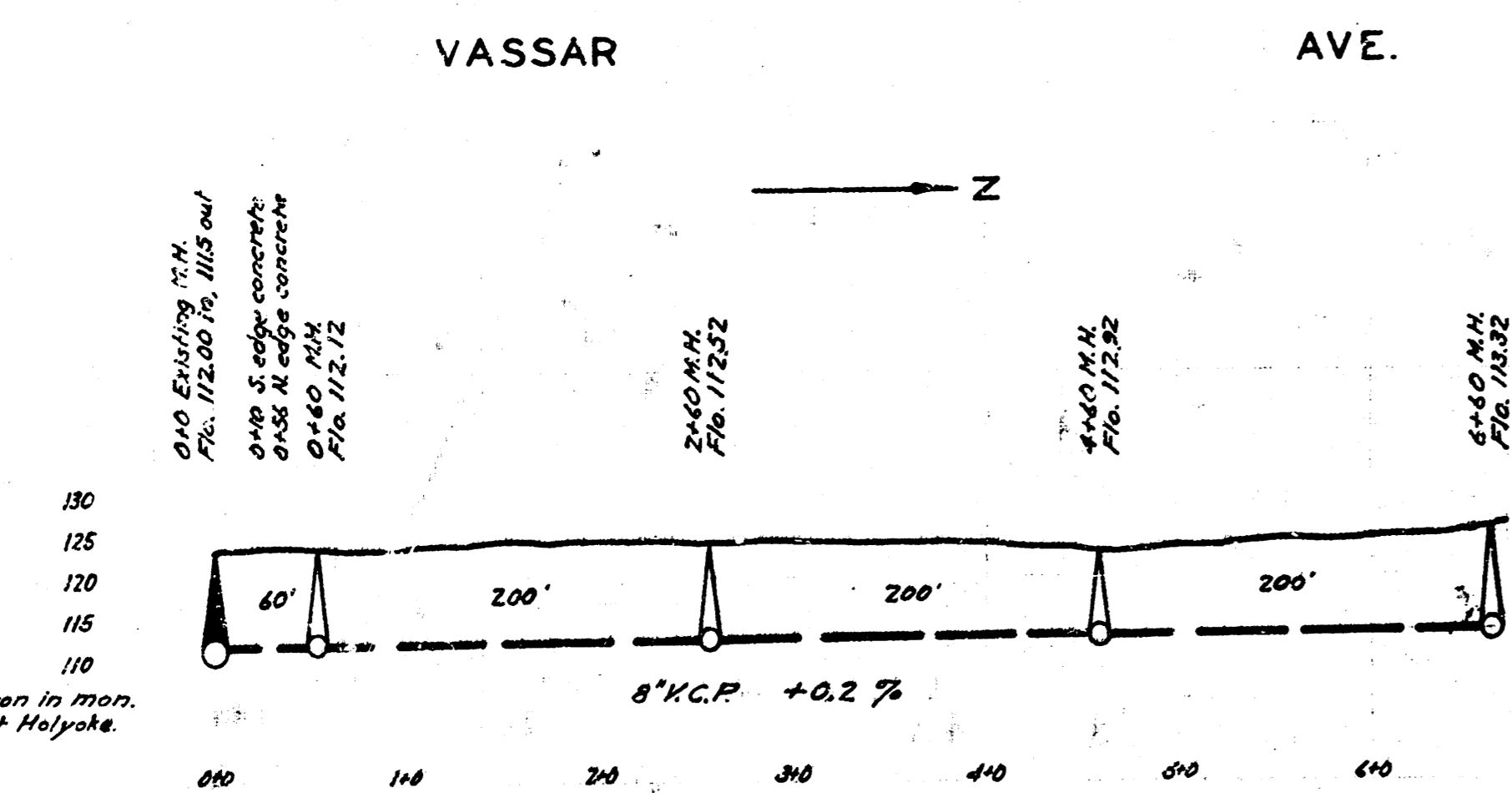
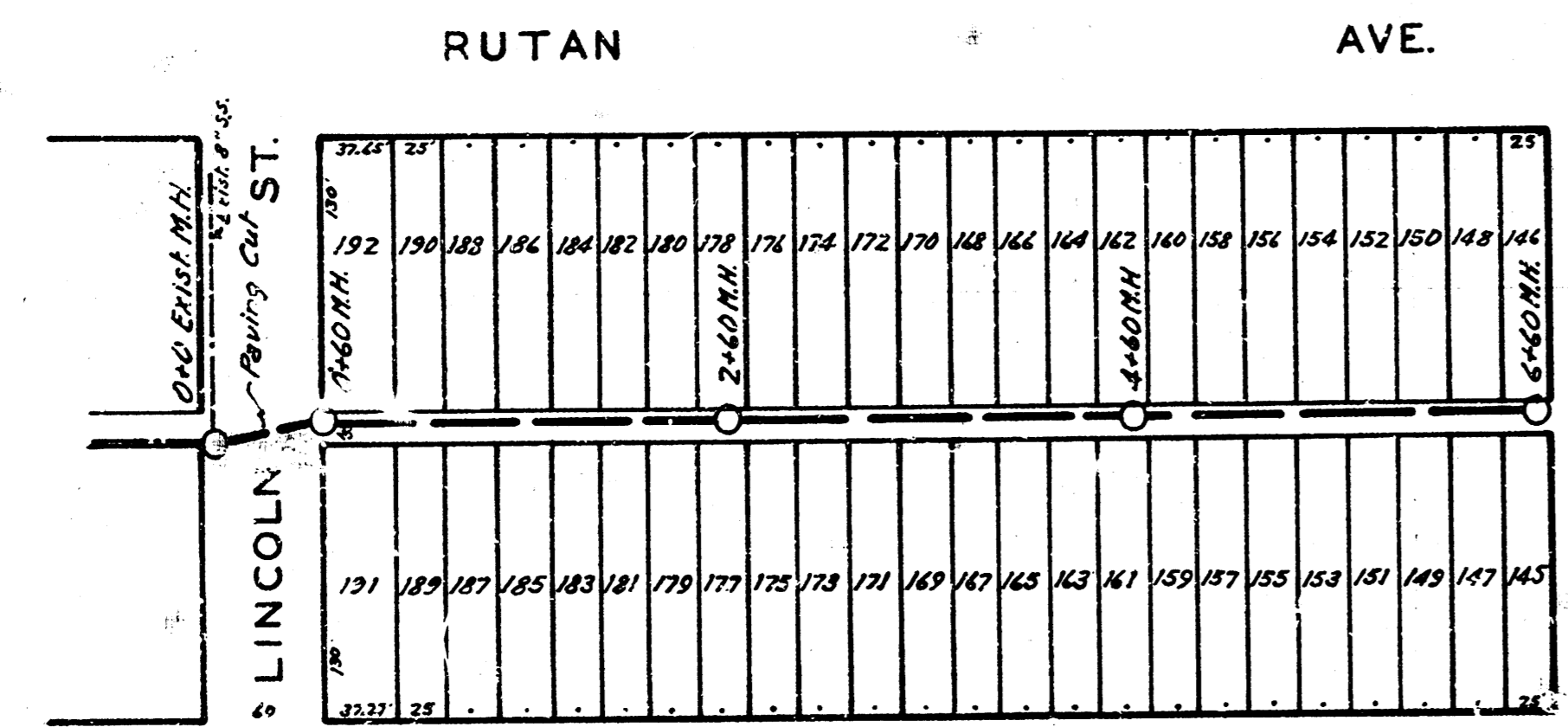


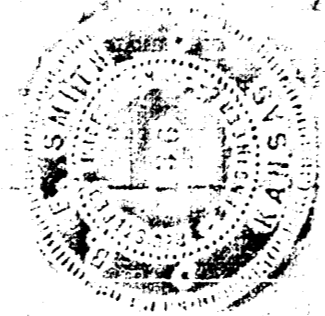
LAT. 1, DRY CREEK SUBMAIN, S.S.#12
WICHITA, KANSAS



LAT. 2, DIST. 6, S.S.#12
WICHITA, KANSAS

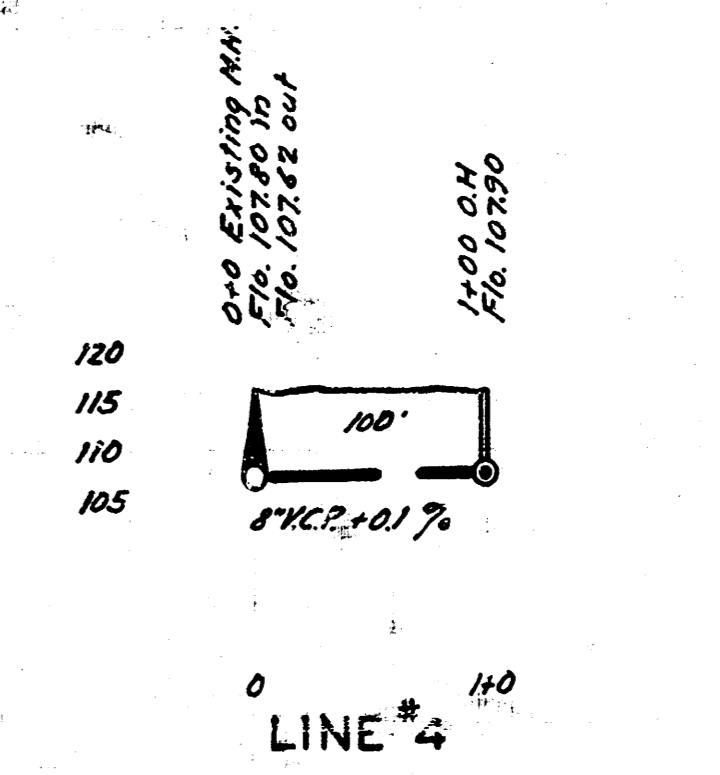
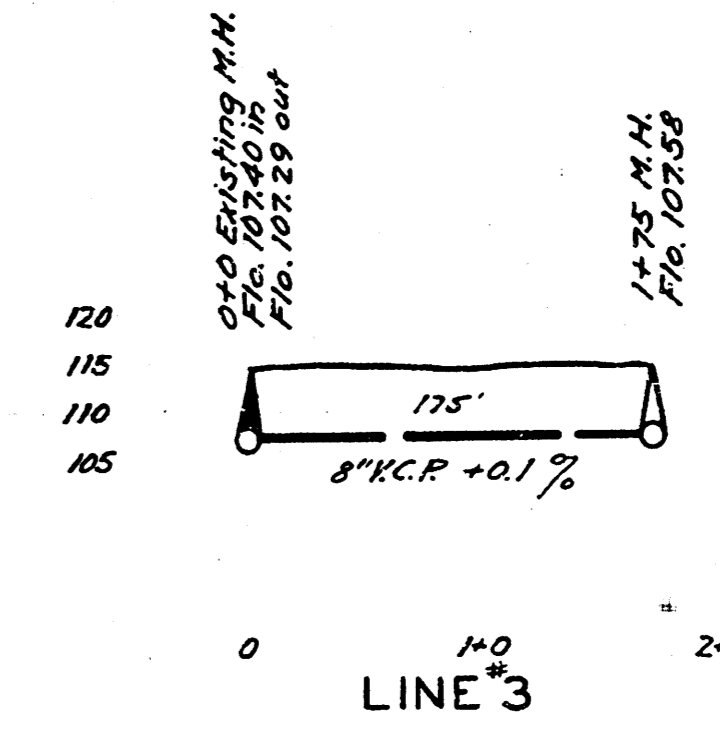
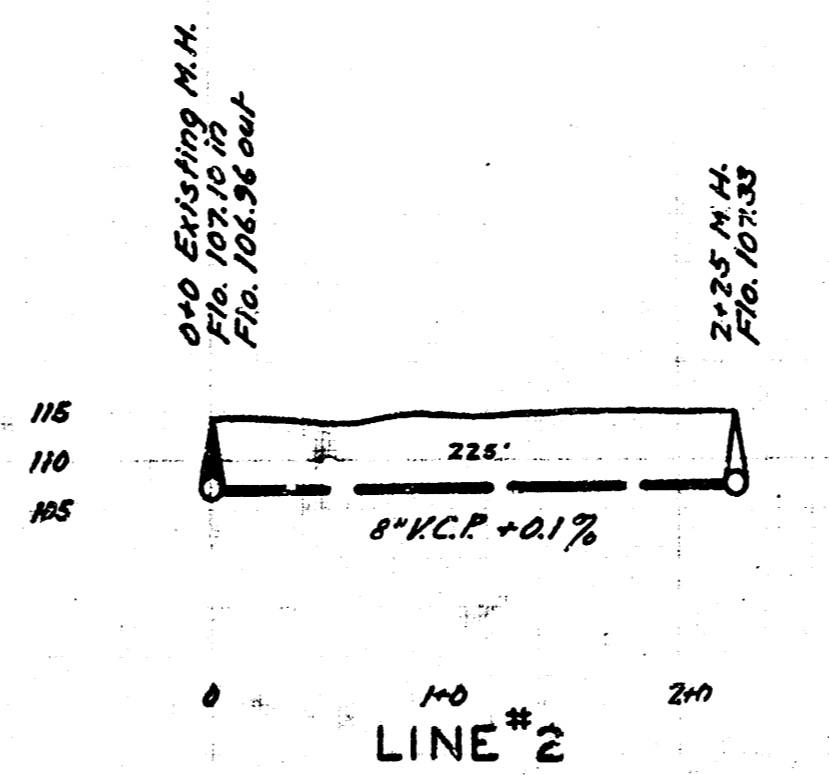
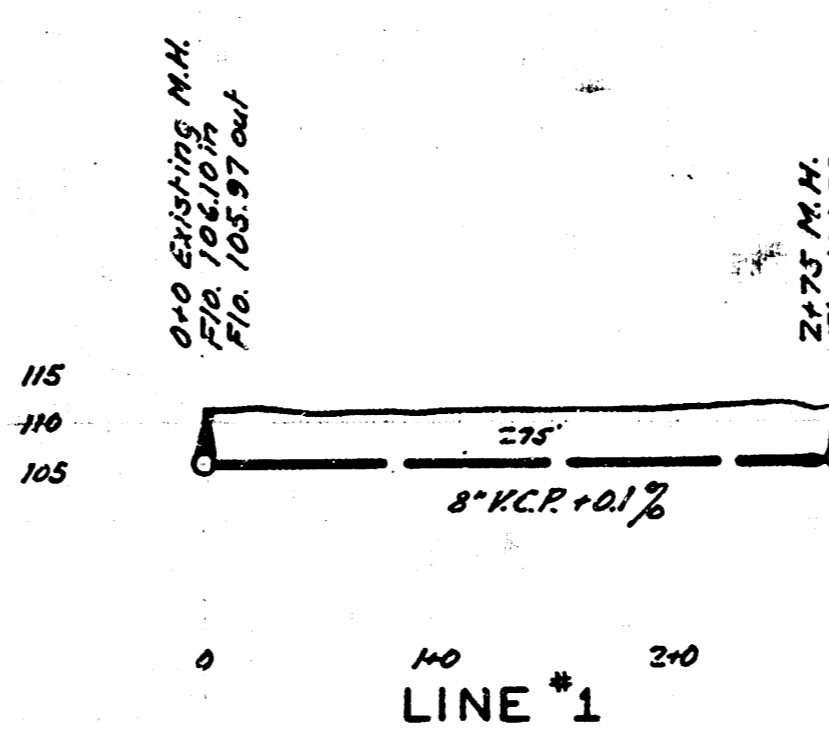
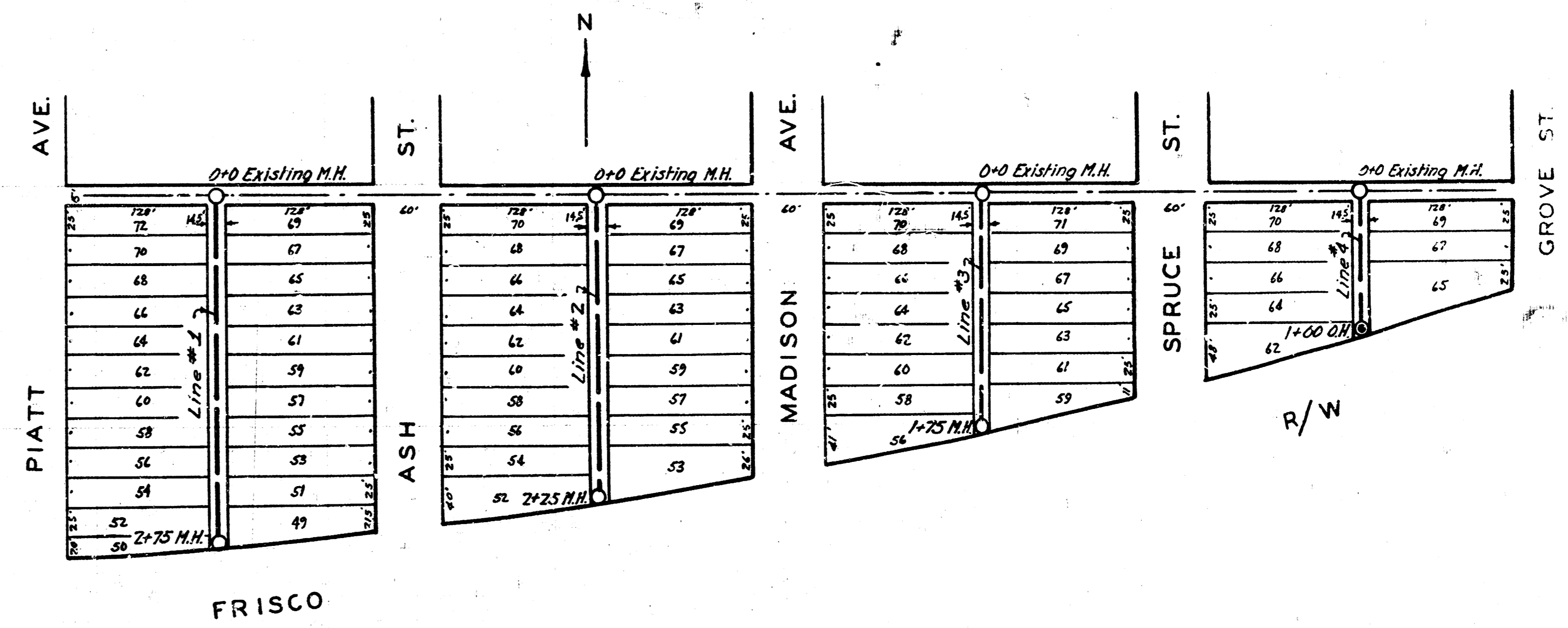
B.M. 19300 - Top of Jop. N. side
at file in 619 N.C. Gilman
and W. of Pershing Ave.

B.M. - 114 Iron in man.
N.E. corner of Heljaka.



ENGINEERING DEPARTMENT
CITY OF WICHITA, KANSAS
P.L. BROCKWAY CITY ENGINEER
B.C. SMITH OFFICE ENGINEER
APRIL 1941 SCALE 1"=80'

LAT. 1, DIST. S. S.S.#12
WICHITA, KANSAS



B.M. 11531 8" to Ball etc. nr. N.N.H. cor. Piatt & 9th St.