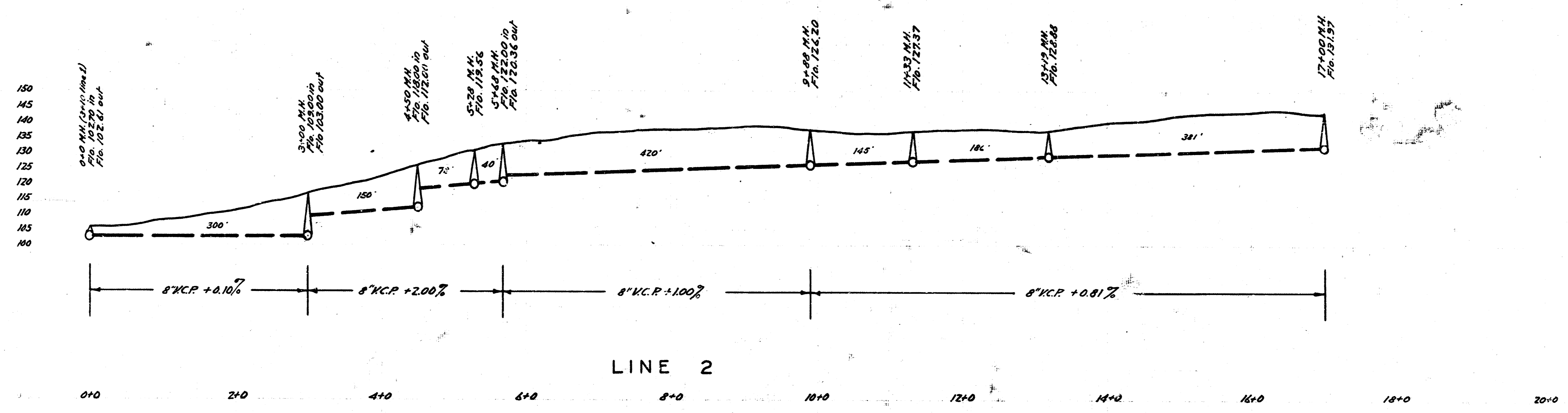
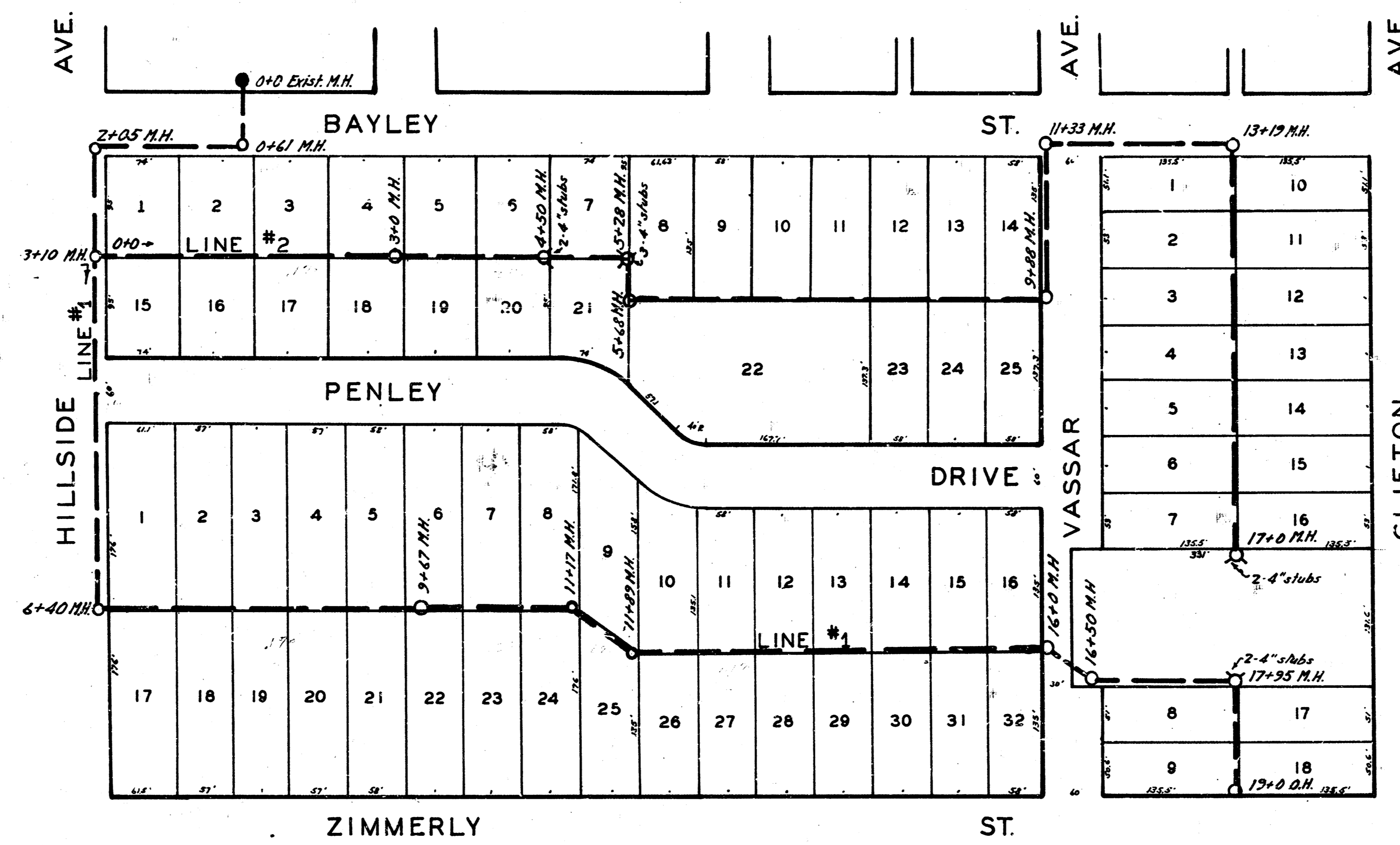


LAT. 3, DIST. 6, S.S. # 12
WICHITA, KANSAS



R.H. Elev 10&06 "K" in Keeler bk. of cd. NE. cor. Hillside & Lincoln

LAT. 3, DIST. 6, S.S. # 12
 WICHITA, KANSAS



ENGINEERING DEPARTMENT
 CITY OF WICHITA, KANSAS
 P.L. BROCKWAY CITY ENGINEER
 B.E. SMITH ENGINEER OF DESIGN
 OCTOBER 1941 SCALE 1"=80'