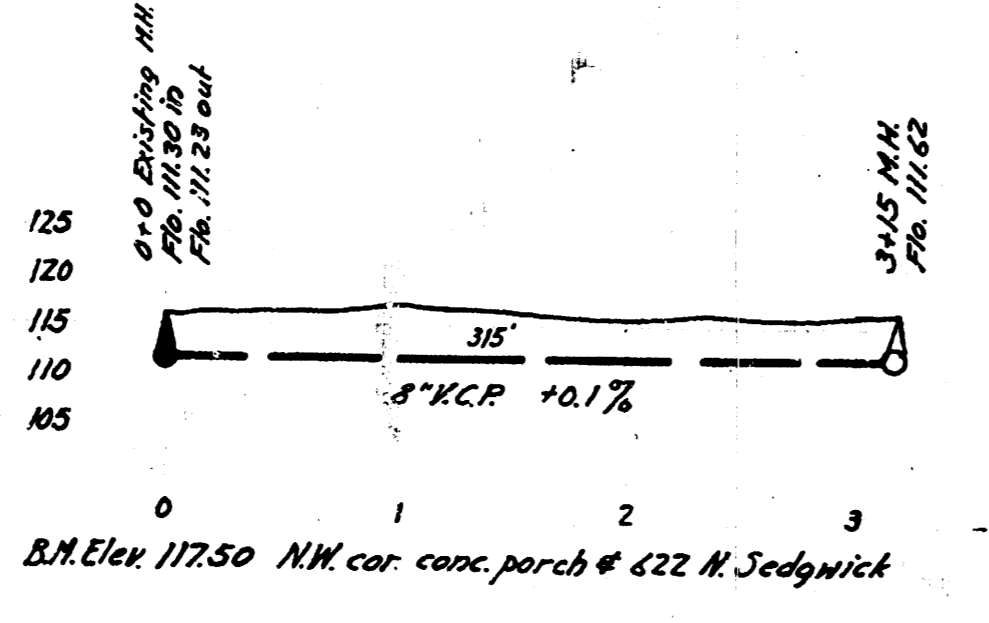
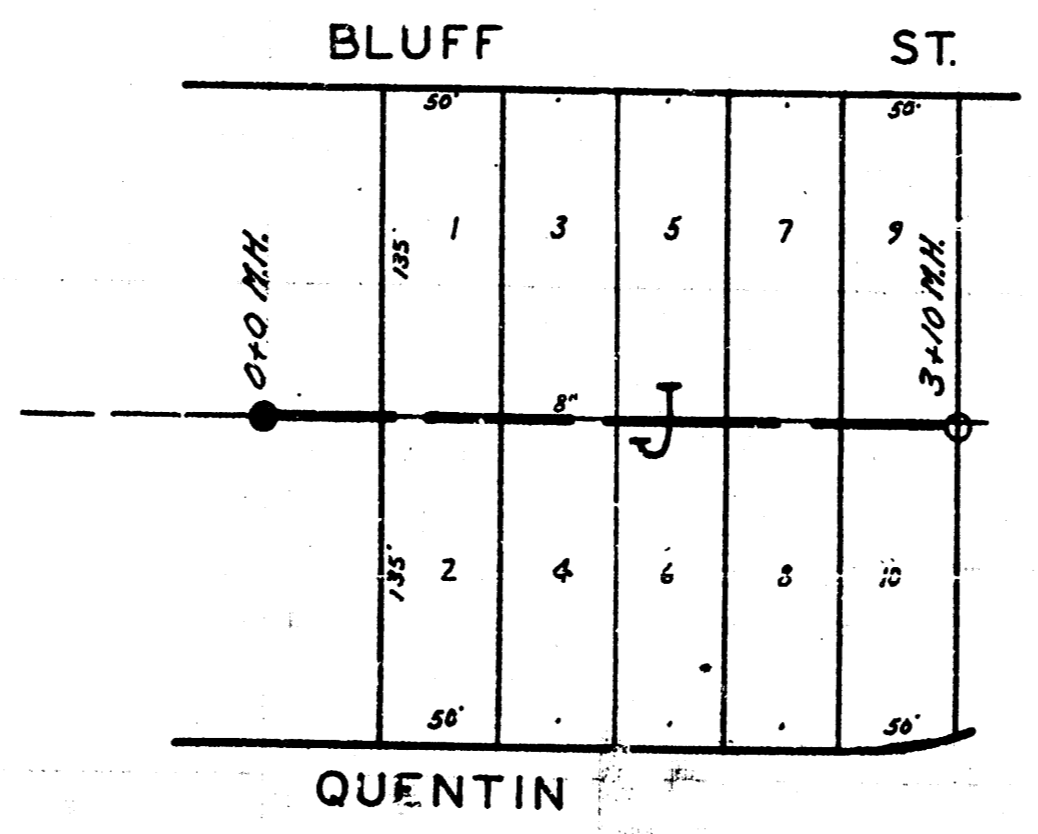


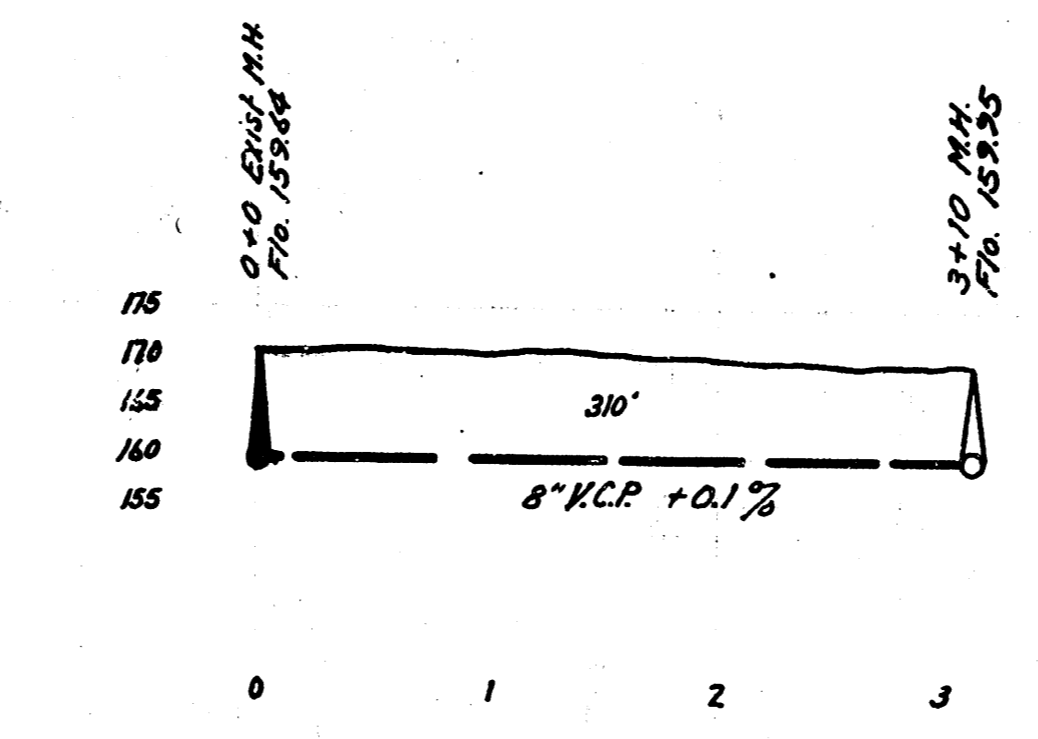
LAT. 20, DIST. A, S.S. #21



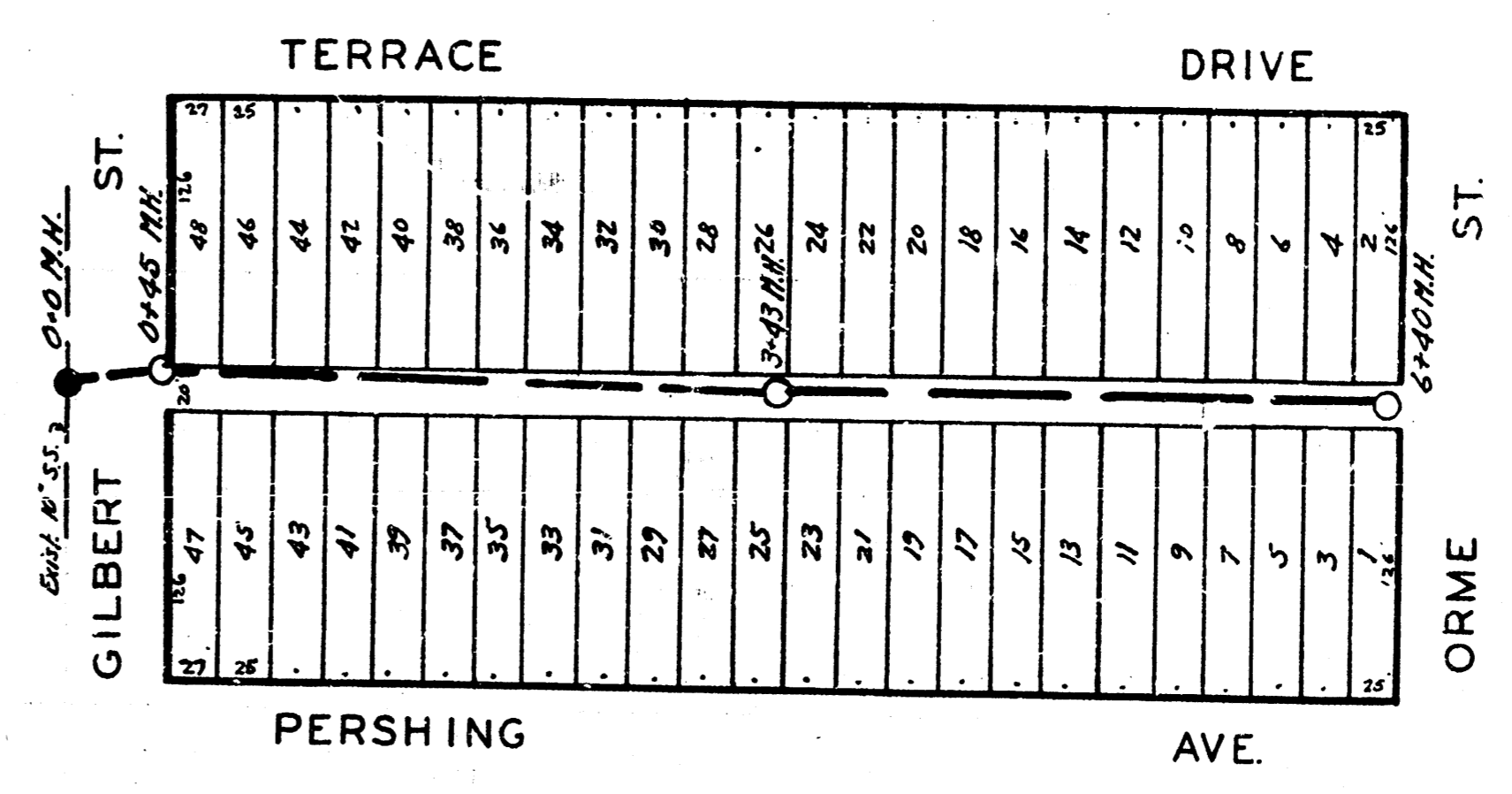
B.M. Elev. 117.50 NW cor. conc. porch @ 422 N. Sedgwick



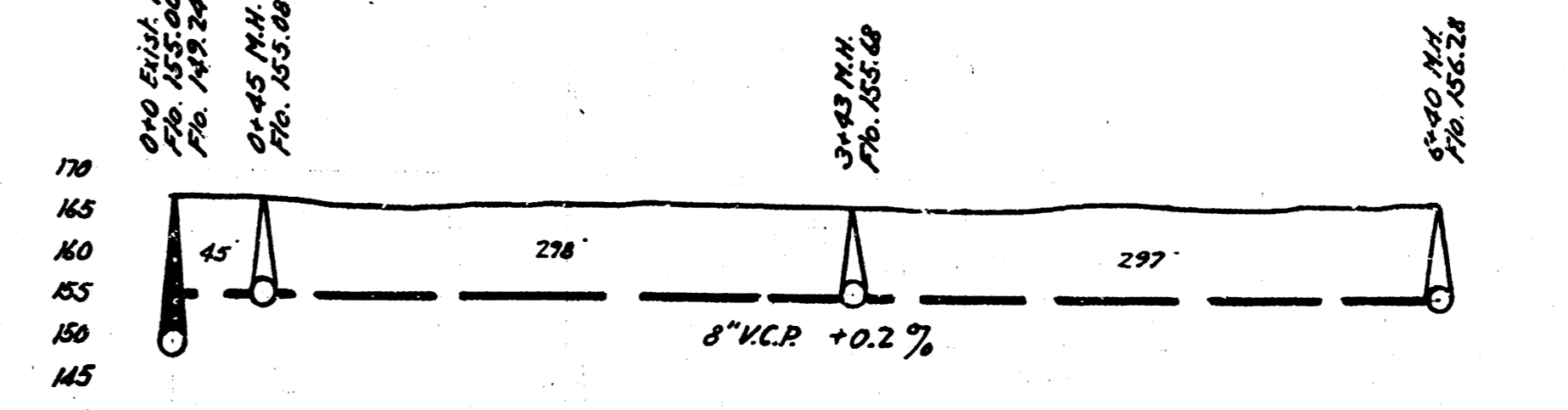
LAT. 4, DIST. 6, S.S. #12



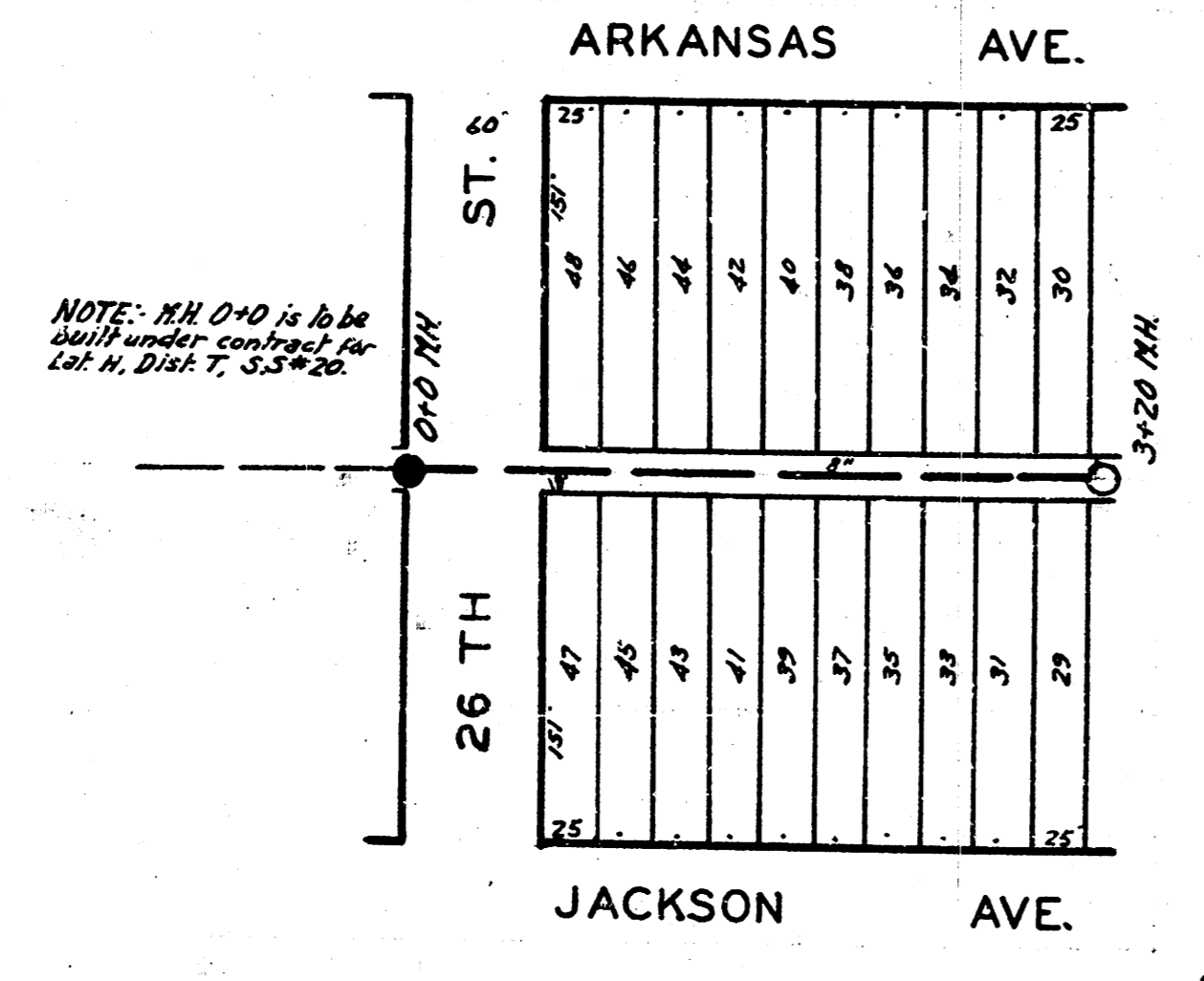
B.M. Elev. 167.00 Top of wooden step on RR N.S. Gilbert in alley north bet. Pershing & Terrace Dr.



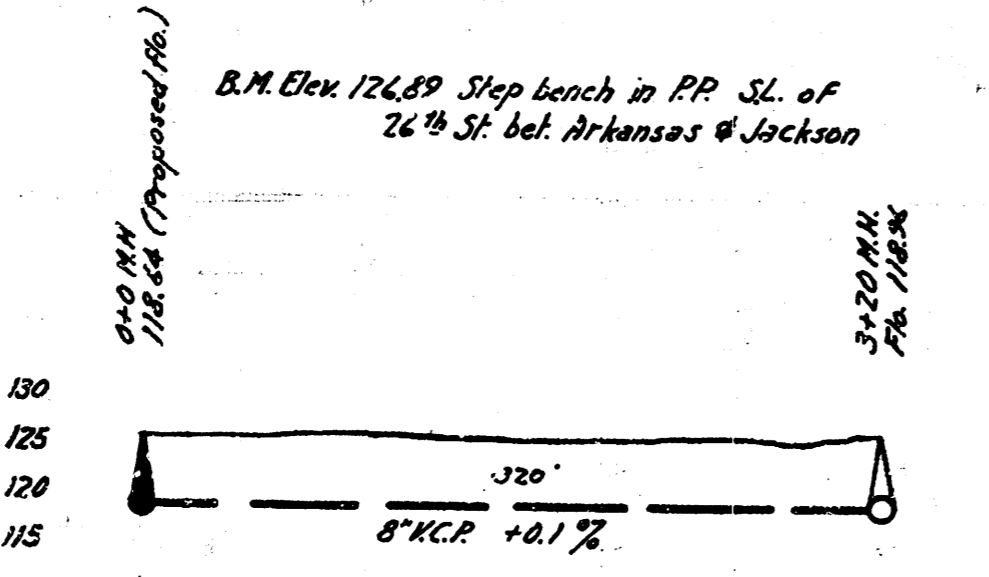
LAT. 4, DRYCREEK SUB. S.S. #12



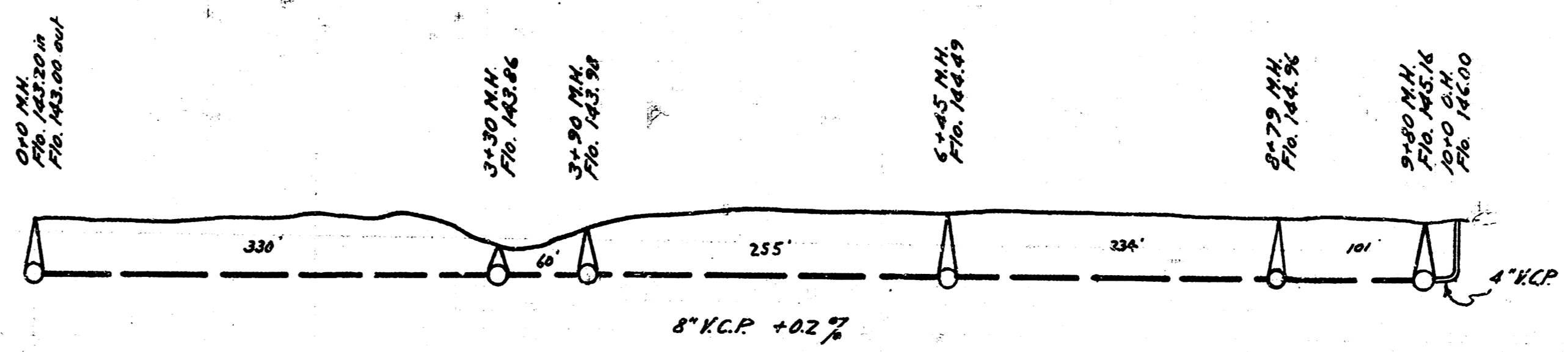
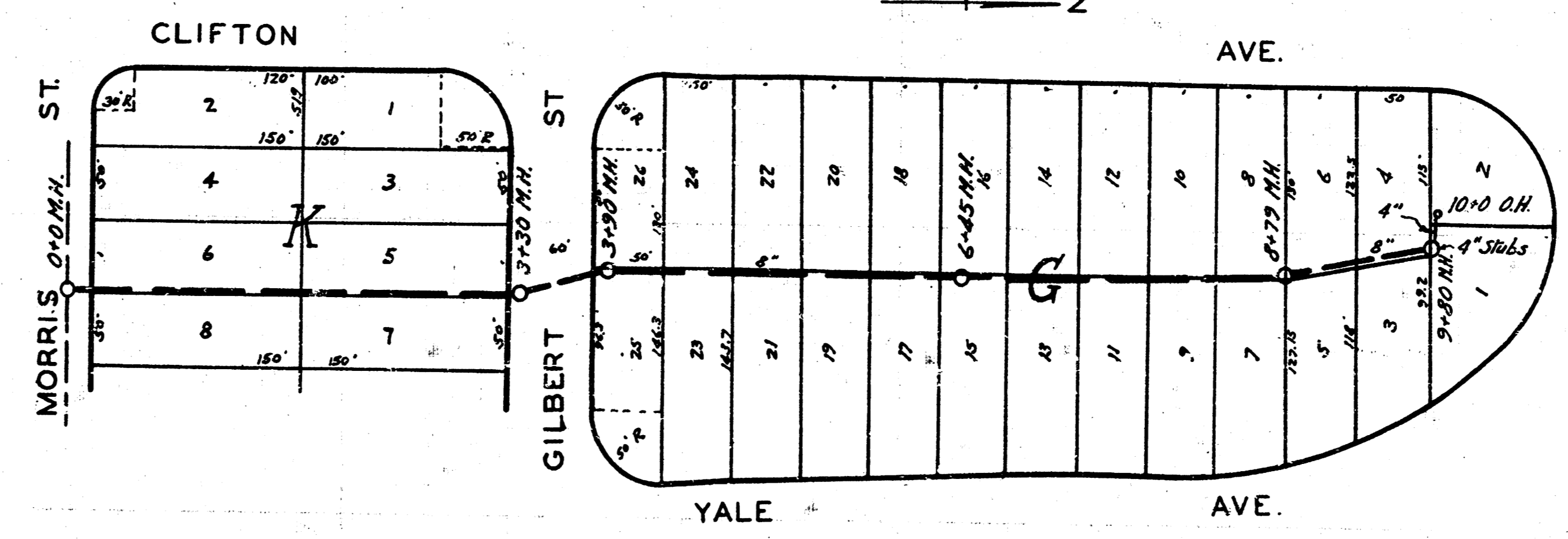
B.M. Elev. 167.00 Top of wooden step on RR N.S. Gilbert in alley north bet. Pershing & Terrace Dr.



LAT. I, DIST. T, S.S. #20



B.M. Elev. 126.89 Step bench in RR SL. of 26th St. bet. Arkansas & Jackson



B.M. Elev. 148.85 Step bench in RR N.S. Morris & E.S. Clifton

ENGINEERING DEPARTMENT
CITY OF WICHITA, KANSAS
P.L. BROCKWAY CITY ENGINEER
B.E. SMITH ENGINEER OF DESIGN
DECEMBER 1941 SCALE 1"=80'