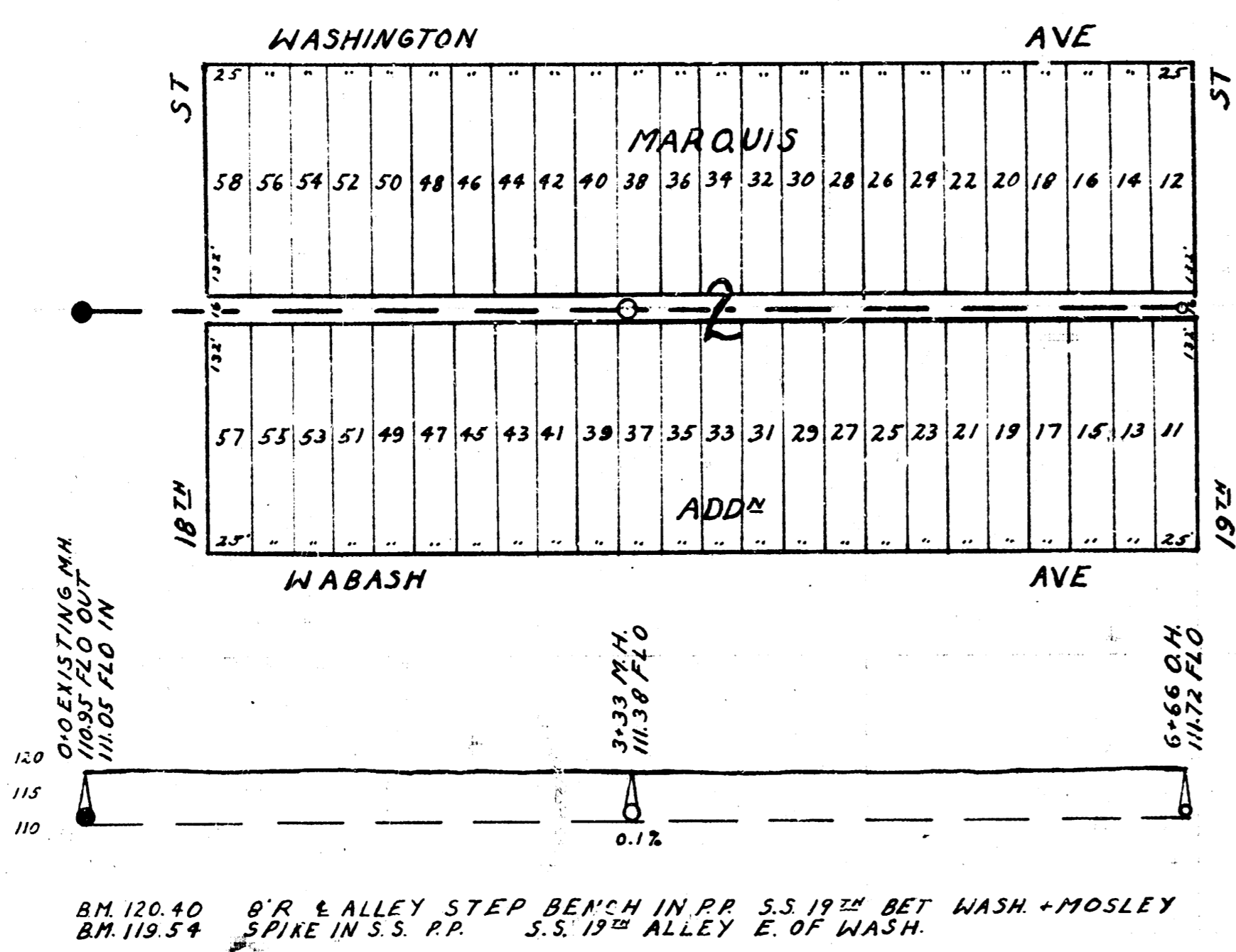
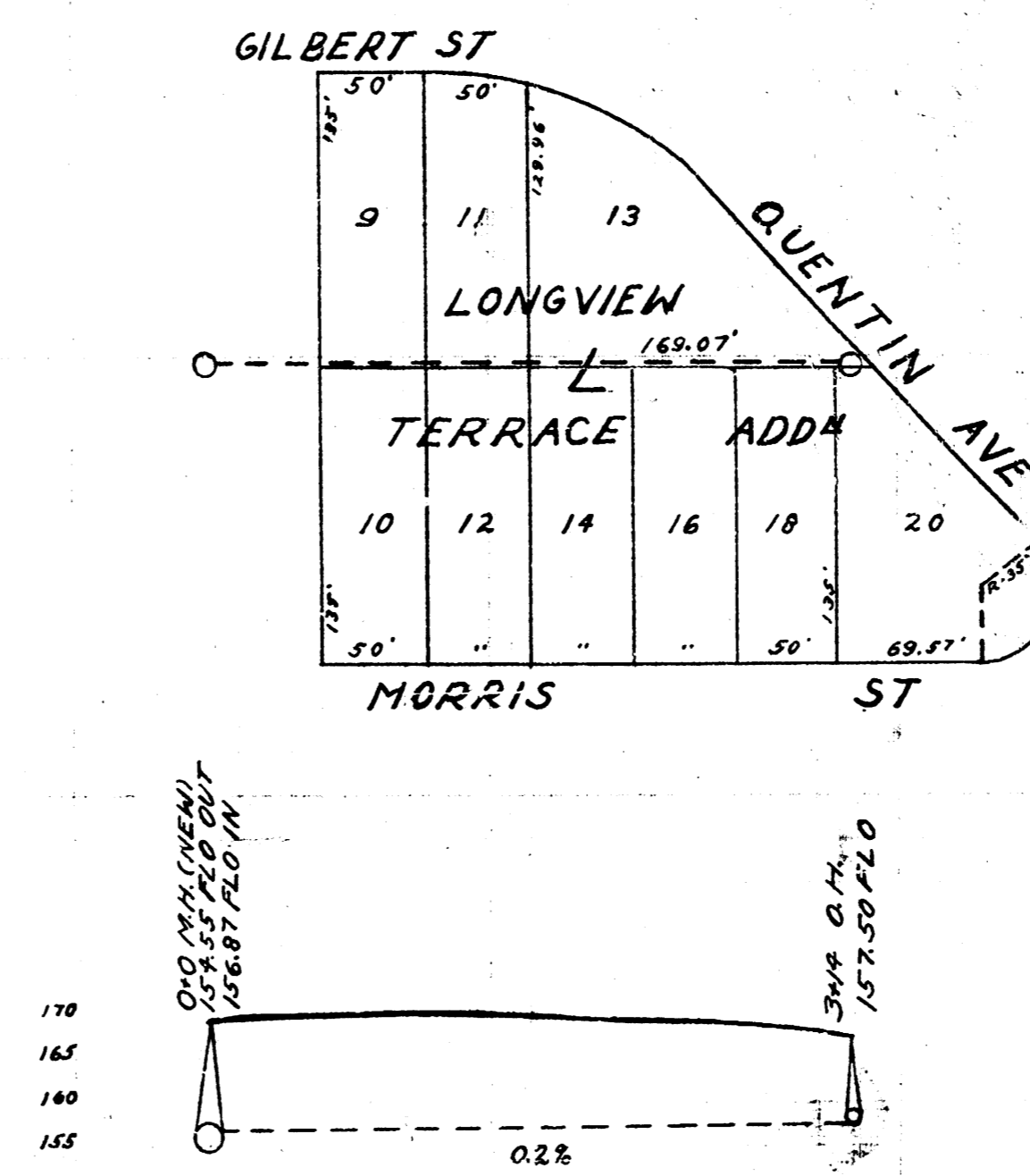


LAT 23 S.S. #20



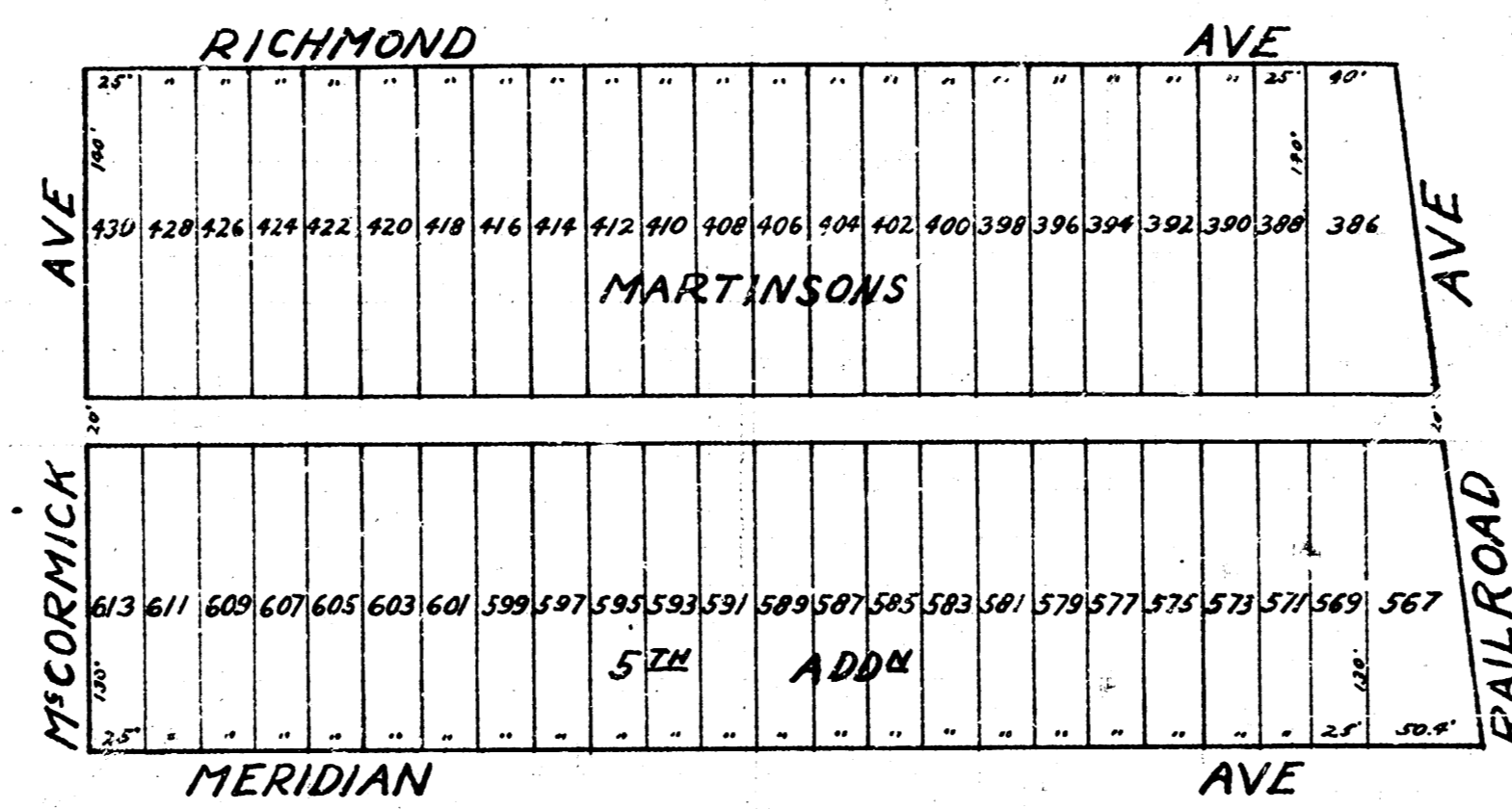
B.M. 120.40  
 B.M. 119.54  
 8" R. & ALLEY STEP BENCH IN P.P. 25 19<sup>TH</sup> BET WASH + MOSLEY  
 SPIKE IN S.S. P.P. S.S. 19<sup>TH</sup> ALLEY E. OF WASH.

LAT 5 DIST 6 S.S. #12



B.M. 169.24 N.H. COR. OF 18<sup>TH</sup> STEP (CONCR) N.E. COR. ROOSEVELT + MORRIS - NO 724 S. ROOSEVELT

LAT 21 DIST A S.S. #21



CITY OF WICHITA, KANSAS  
 PUBLIC SERVICE DEPARTMENT  
 ENGINEERING DIVISION  
 L.K. WHITE, CITY ENGINEER  
 DRAWN BY L.K. SUHM NOV. 1945

930