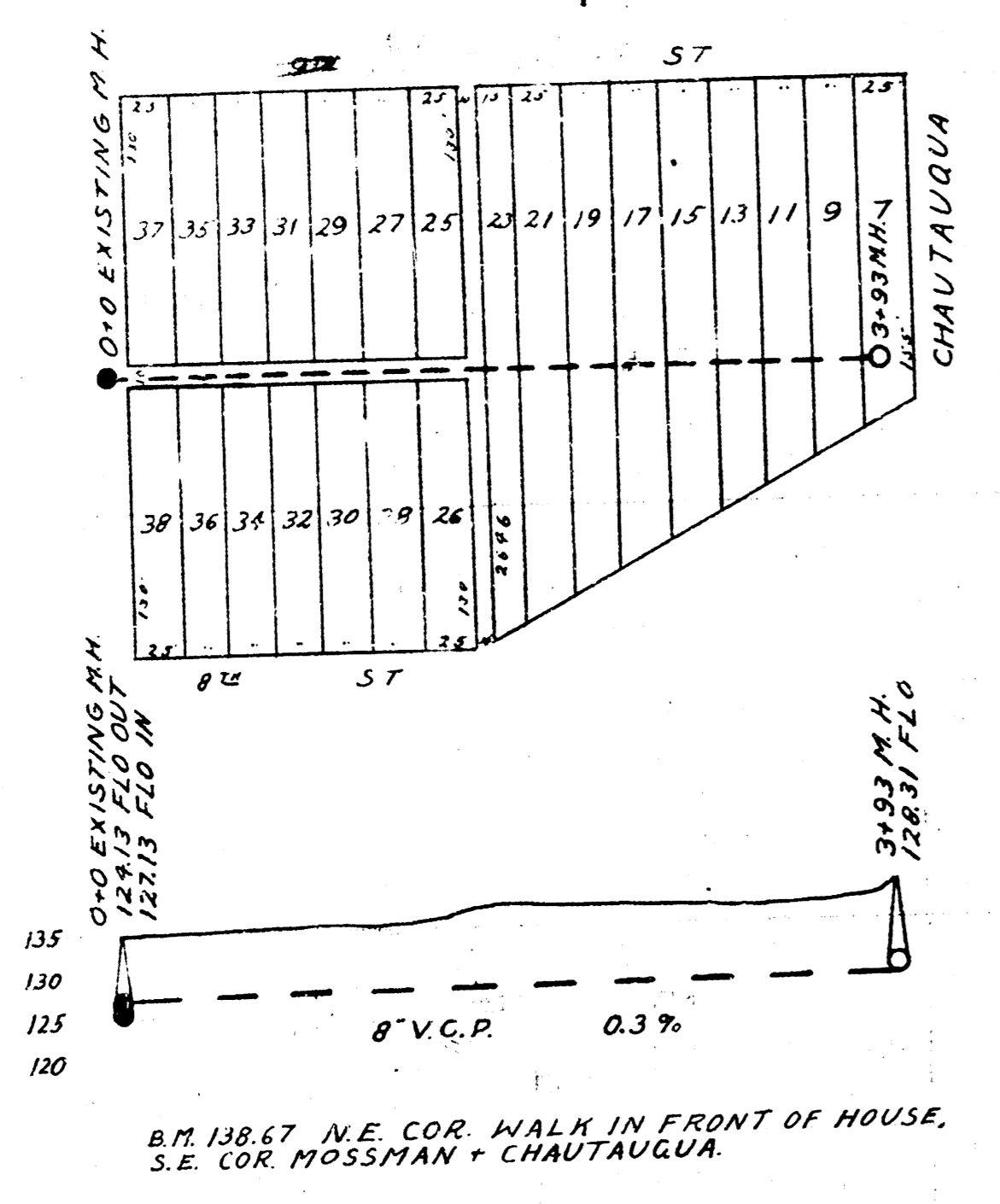
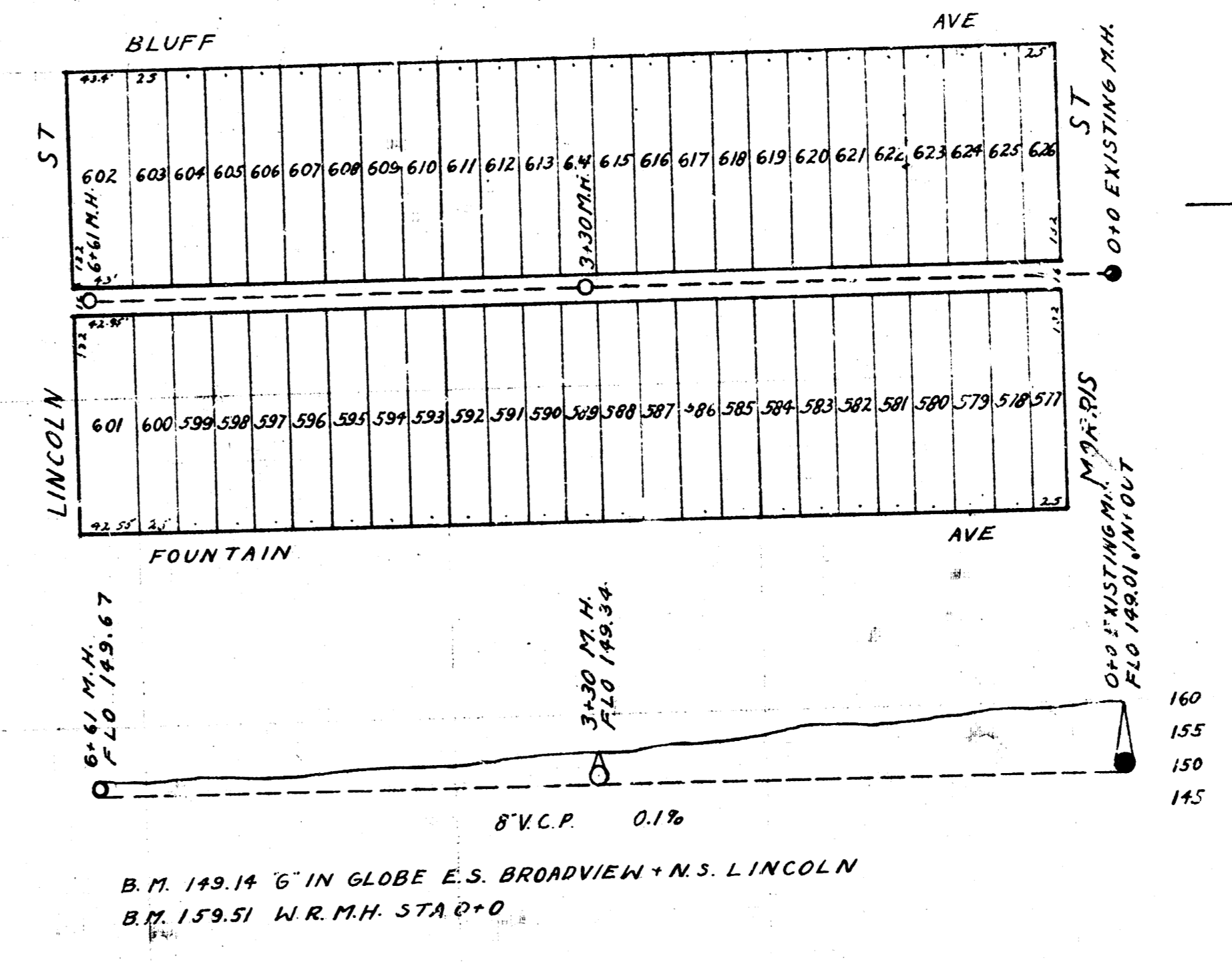


LAT X DIST E, S.S.#12



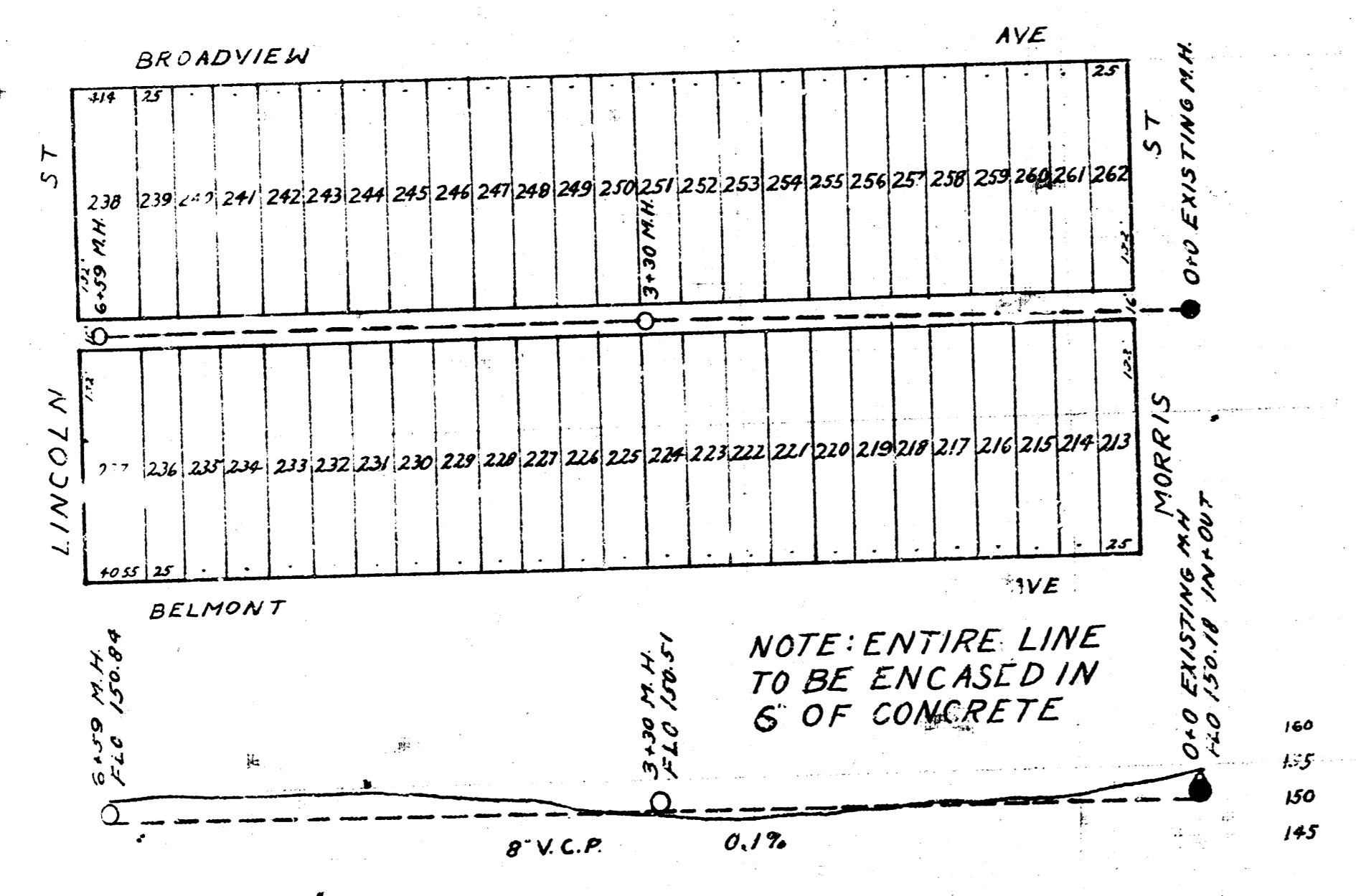
B.M. 138.67 N.E. COR. WALK IN FRONT OF HOUSE,  
S.E. COR. HOSSMAN + CHAUTAUQUA.

LAT 8 DIST 6 S.S.#12



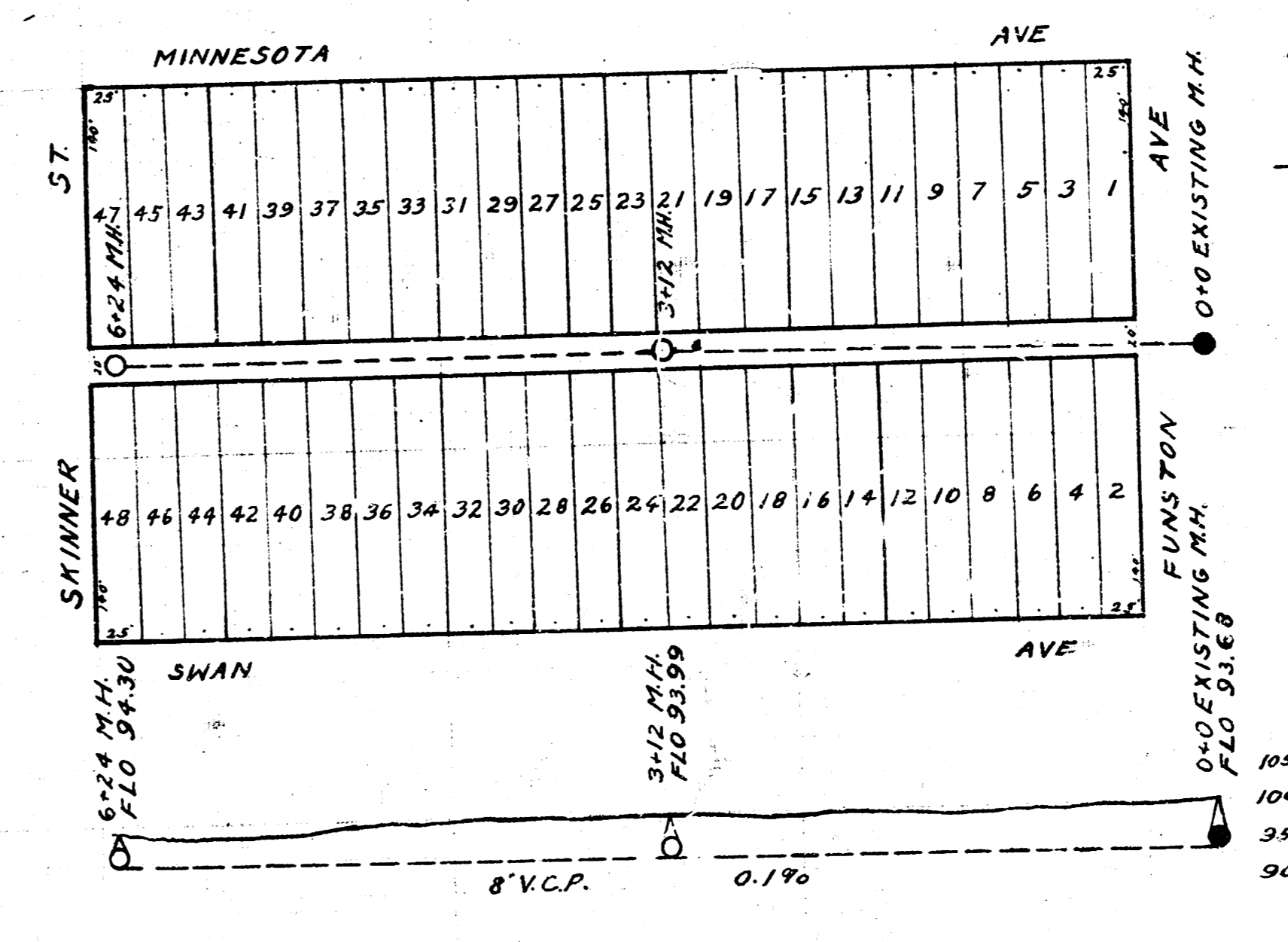
B.M. 149.14 'G' IN GLOBE E.S. BROADVIEW + N.S. LINCOLN  
B.M. 159.51 'W.R.M.H. STA 0+0'

LAT 9 DIST 6 S.S.#12



B.M. 153.98 'W. RIM M.H. STA 0+0'  
B.M. 149.14 'G' IN GLOBE E.S. BROADVIEW + N. C. LINCOLN.

LAT 27 S.S.#20



B.M. 99.68 WEST RIM M.H. STA 0+0  
B.M. 101.70 S.E. COR. CONC. FOUNDATION, HO. ON 2<sup>ND</sup> T  
N. OF SKINNER N.S. MINNESOTA

DEPARTMENT OF PUBLIC SERVICE  
ENGINEERING DIVISION  
CITY OF WICHITA, KANSAS  
L.K. WHITE CITY ENGINEER  
OCT. 1946