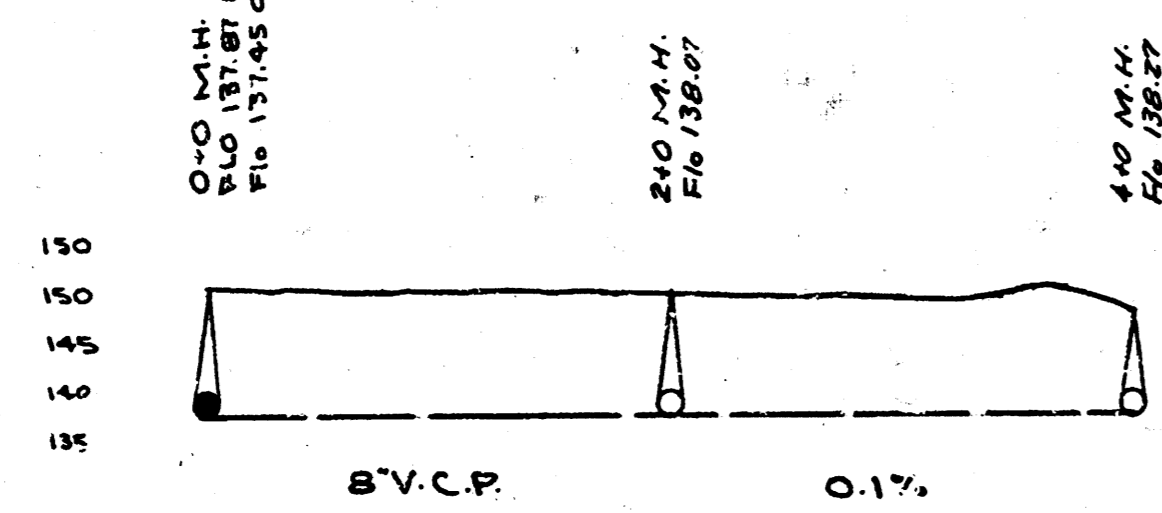
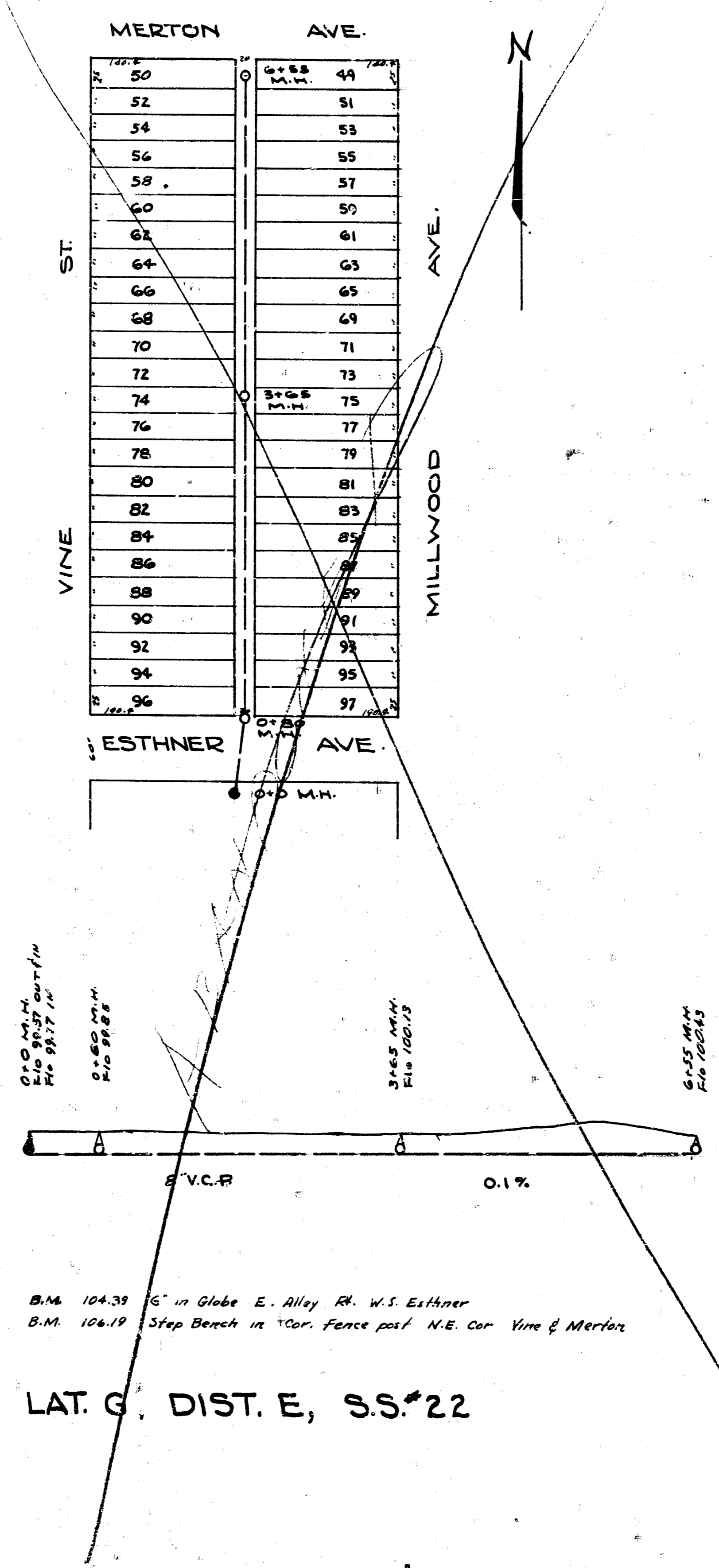


LAT. 10, DIST. G, S.S. #12

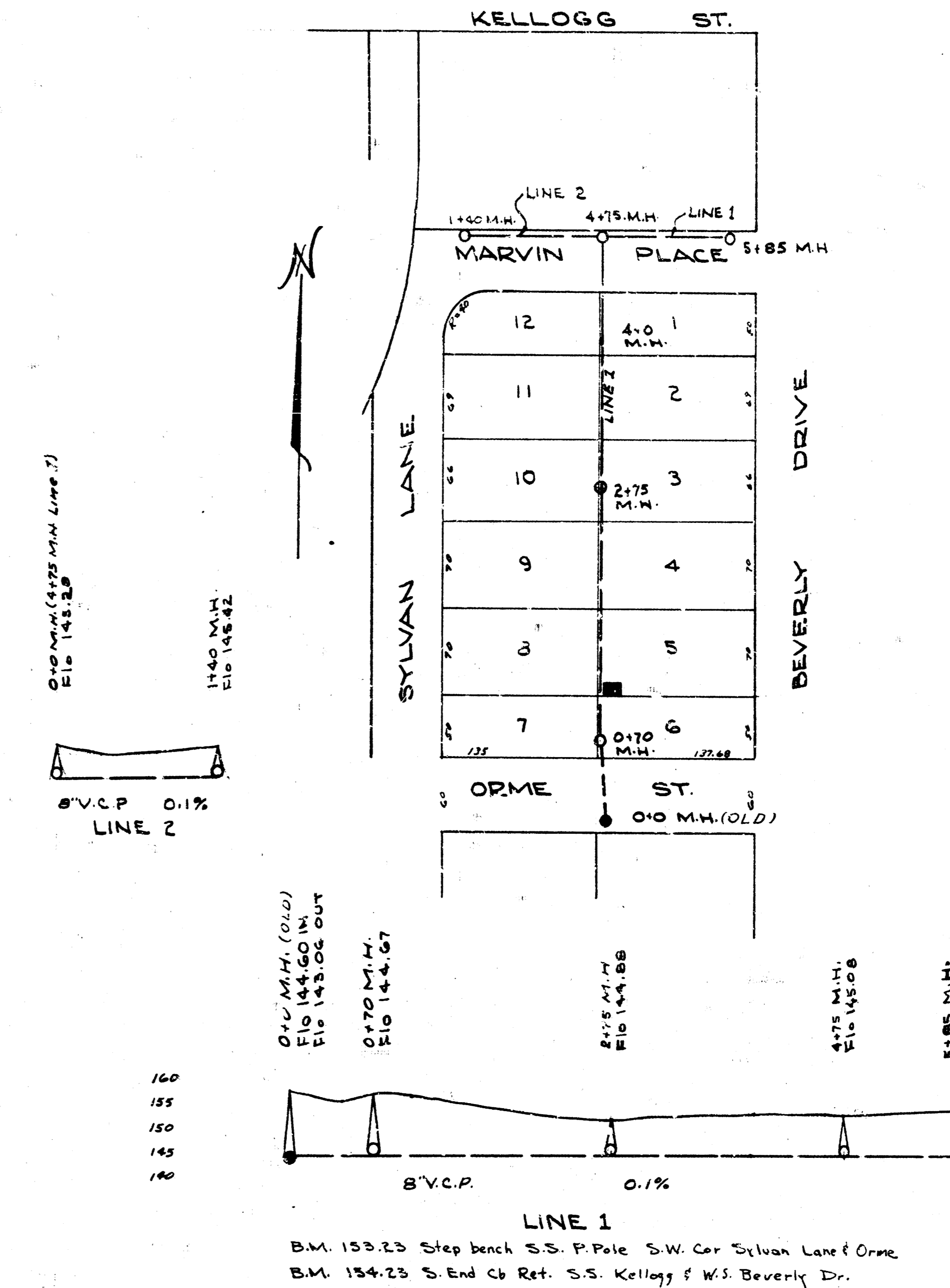


B.M. 145.40 S. Eb. Morris W.L. Clifton



LAT. G, DIST. E, S.S. #22

B.M. 104.39 6' in Globe E. Alley R.R. W.S. Esthner
B.M. 106.19 Step Bench in 100' Cor. Fence post N.E. Cor. Vine & Merton



LAT. 23, DRY CREEK SUB, S.S. #12

B.M. 153.25 Step bench S.S. P. Pole S.W. Cor. Sylvan Lane & Orme
B.M. 154.25 S. End Ch. Ref. S.S. Kellogg & W. Beverly Dr.

DEPARTMENT OF SERVICE
CITY OF WICHITA, KANSAS
ENGINEERING DIVISION
L.K. WHITE - CITY ENGINEER
SANITARY SEWER
Scale: 1" = 80' MARCH 1947
LAT. 10, DIST. G, S.S. #12
LAT. G, DIST. E, S.S. #22
LAT. 23, D.C.S. S.S. #12