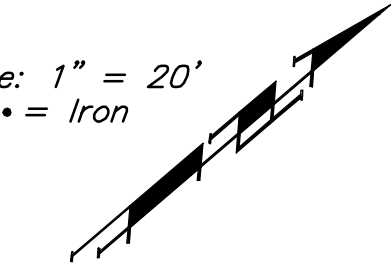


BENCHMARKS:

135th St. W. & Pawnee-
City of Wichita Benchmark
Disc on SW Corner of
Concrete Base of High Line
Pole.
Elev. = 1359.65 NGVD29

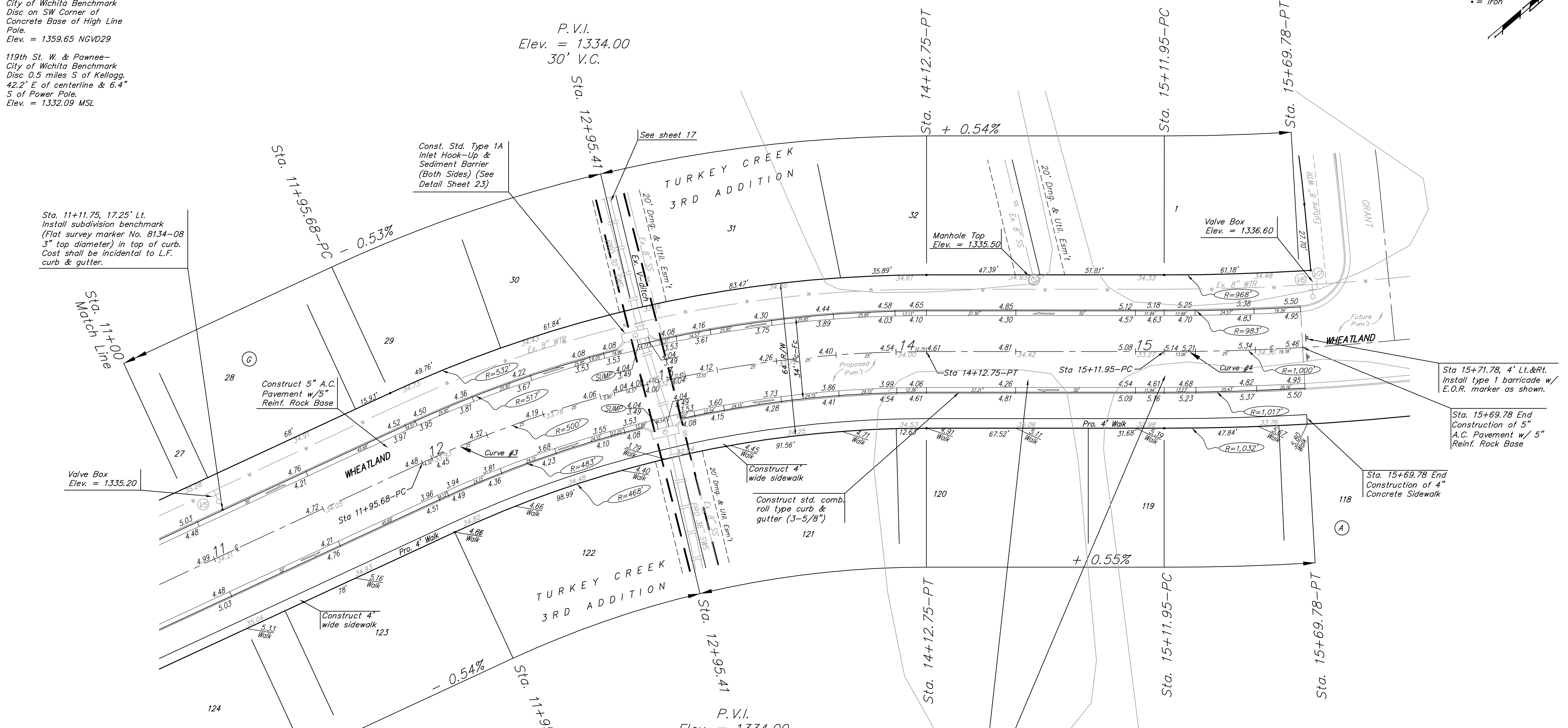
119th St. W. & Pawnee-
City of Wichita Benchmark
Disc 0.5 miles S of Kellogg.
42.2' E of centerline & 6.4'
S of Power Pole.
Elev. = 1332.09 MSL

Scale: 1" = 20'
• = Iron



P.V.I.
Elev. = 1334.00
30' V.C.

Sta. 11+11.75, 17.25' Lt.
Install subdivision benchmark
(Flat survey marker No. 8134-08
3" top diameter) in top of curb.
Cost shall be incidental to L.F.
curb & gutter.



Curve #3
Curve Data Based on Centerline
Rad. = 500' Delta = 24°52'27" Tangent = 110.27'
Arc = 217.07' L.C. = 215.37' Def./Ft. = 3.43772 Min.

Station	Arc	6' Left	Defl.	Total Defl.
11+95.68	-	-	0'00"00"	0'00"00"
12+00.00	4.32'	4.37'	0'14"51"	0'14"51"
12+25.00	25.00'	25.30'	1'25"57"	1'40"48"
12+50.00	25.00'	25.30'	1'25"56"	3'06"44"
12+75.00	25.00'	25.30'	1'25"57"	4'32"41"
12+95.41	20.41'	20.65'	1'10"10"	5'42"51"
13+00.00	4.59'	4.65'	0'15"46"	5'58"37"
13+25.00	25.00'	25.30'	1'25"57"	7'24"34"
13+50.00	25.00'	25.30'	1'25"56"	8'50"30"
13+75.00	25.00'	25.30'	1'25"57"	10'16"27"
14+00.00	25.00'	25.30'	1'25"57"	11'42"24"
14+12.75	12.75'	12.90'	0'43"50"	12'26"14"

Note:
Paving cross sections show existing ground after mass grading was completed. Since massgrading, dirt has been dumped on site and some ended up on paving project. Contractor to remove excess dirt as needed to complete paving project (out of Right-of-way & Easements). Extra cost shall be incidental to bid item "Site Clearing & Restoration" Move dirt north out of phase 1. Don't haul off, all dirt stays on site.

WATER VALVE LOCATION TABLE

VALVE NUMBER	BASELINE STATION	OFFSET DISTANCE	OFFSET DIRECTION
V5	11+75.00	26'	Lt.
V6	15+75.34	26'	Lt.
V7	15+77.40	26'	Lt.

Paving contractor will be responsible to operate all water valves on the project, in the presence of the inspector, to ensure accessibility to the valves, and that all valves are left in the "ON" position when the project is completed.

NOTE:
ROLL TYPE CURB & GUTTER TO BE CONSTRUCTED ON THE PAVEMENT SHOWN ON THIS SHEET. TOP OF CURB ELEVATIONS ARE GIVEN FOR FULL HEIGHT CURB.

Baughman Turkey Creek 3rd Addition - Phase I
Wheatland
Sta. 11+00 to 15+69.78

Baughman Company, P.A. 315 Ella St. Wichita, KS 67211 P 316-262-7271 F 316-262-0149
ENGINEERING | SURVEYING | PLANNING | LANDSCAPE ARCHITECTURE

PROJECT NUMBER: 472-84486
DESIGN: MWS
DRAWN: JRW

REVISIONS:
APPROVED: MWS
DATE: 08/07

SCALE: Noted
SHEET: 9 OF 54

E:\Turkey creek 3rd\Phase 1\07-15-Str.dwg 07-07-E892