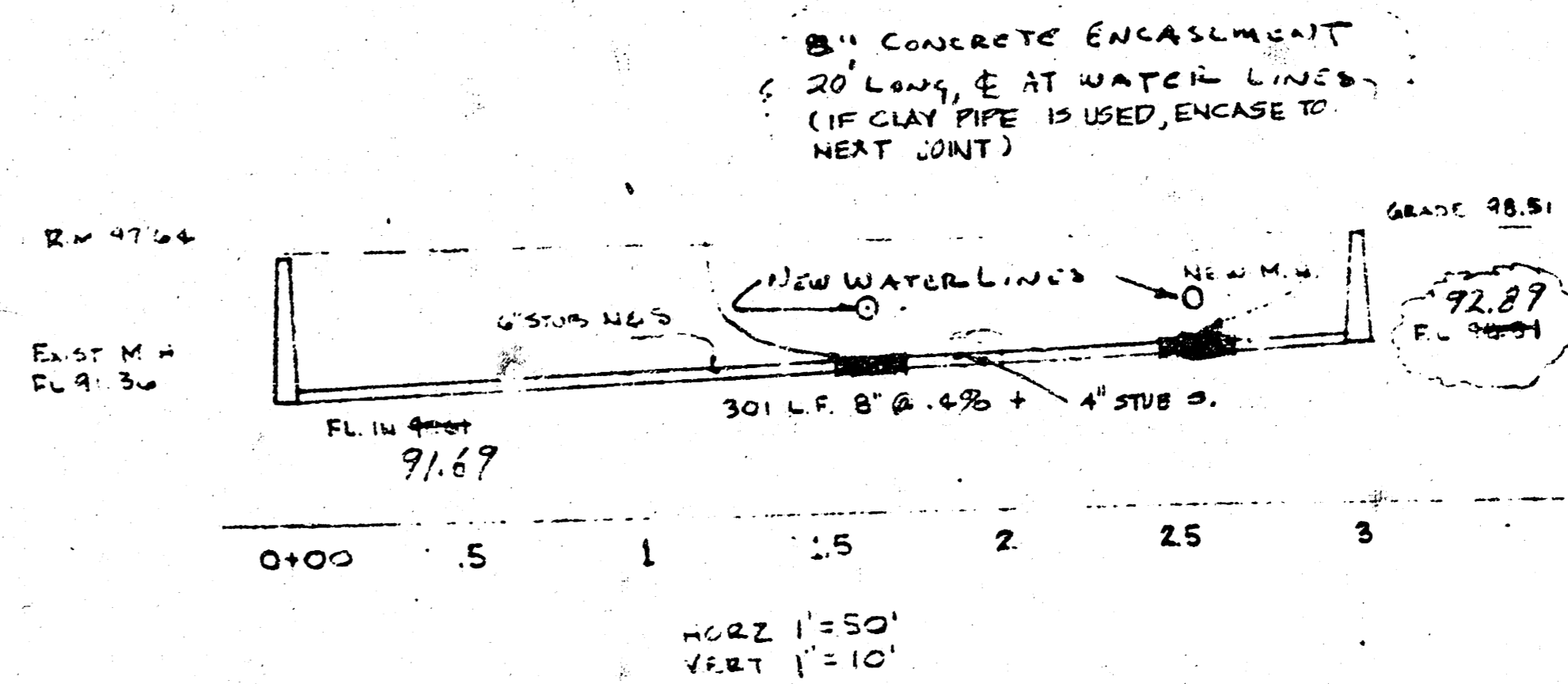
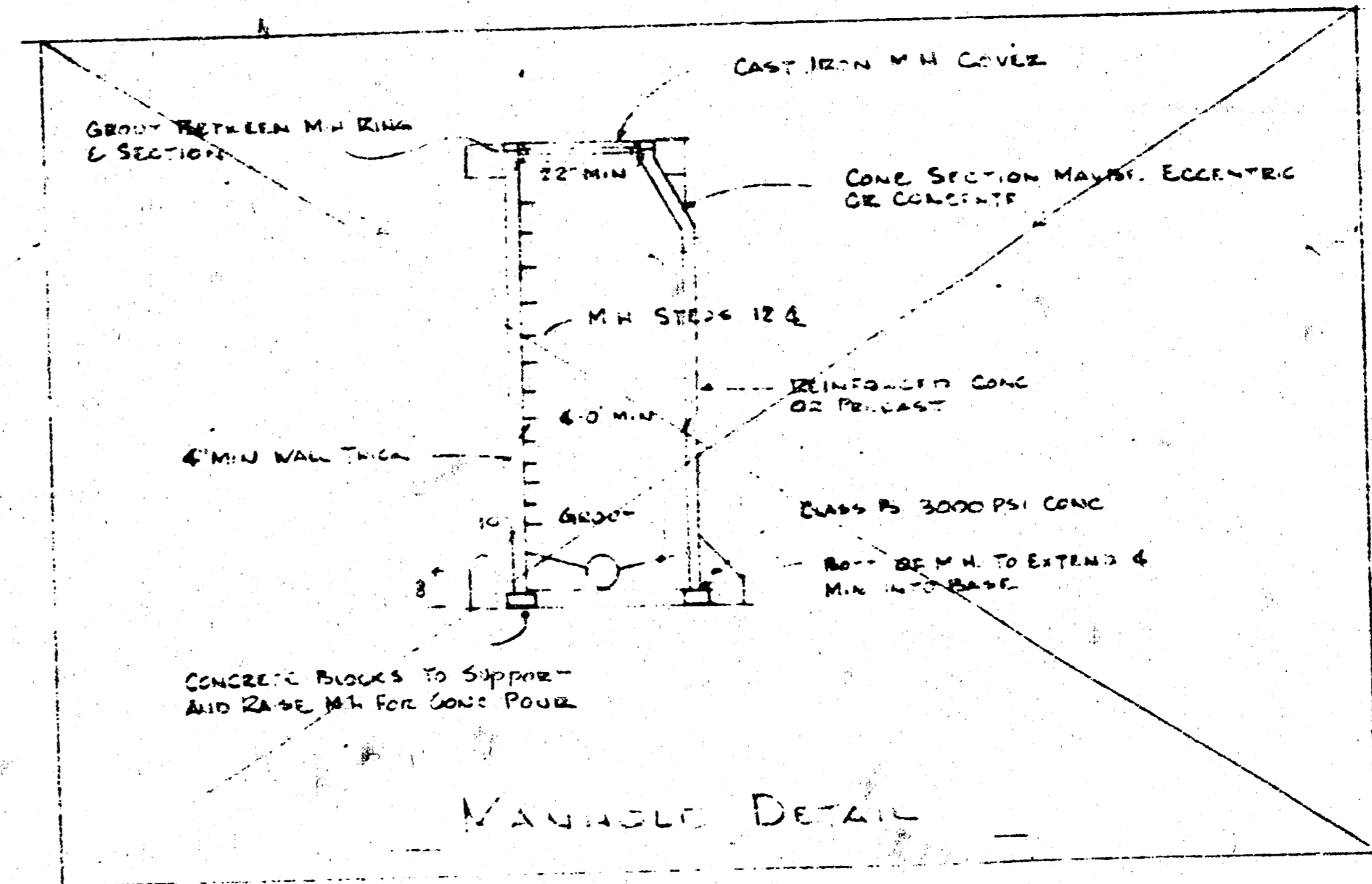
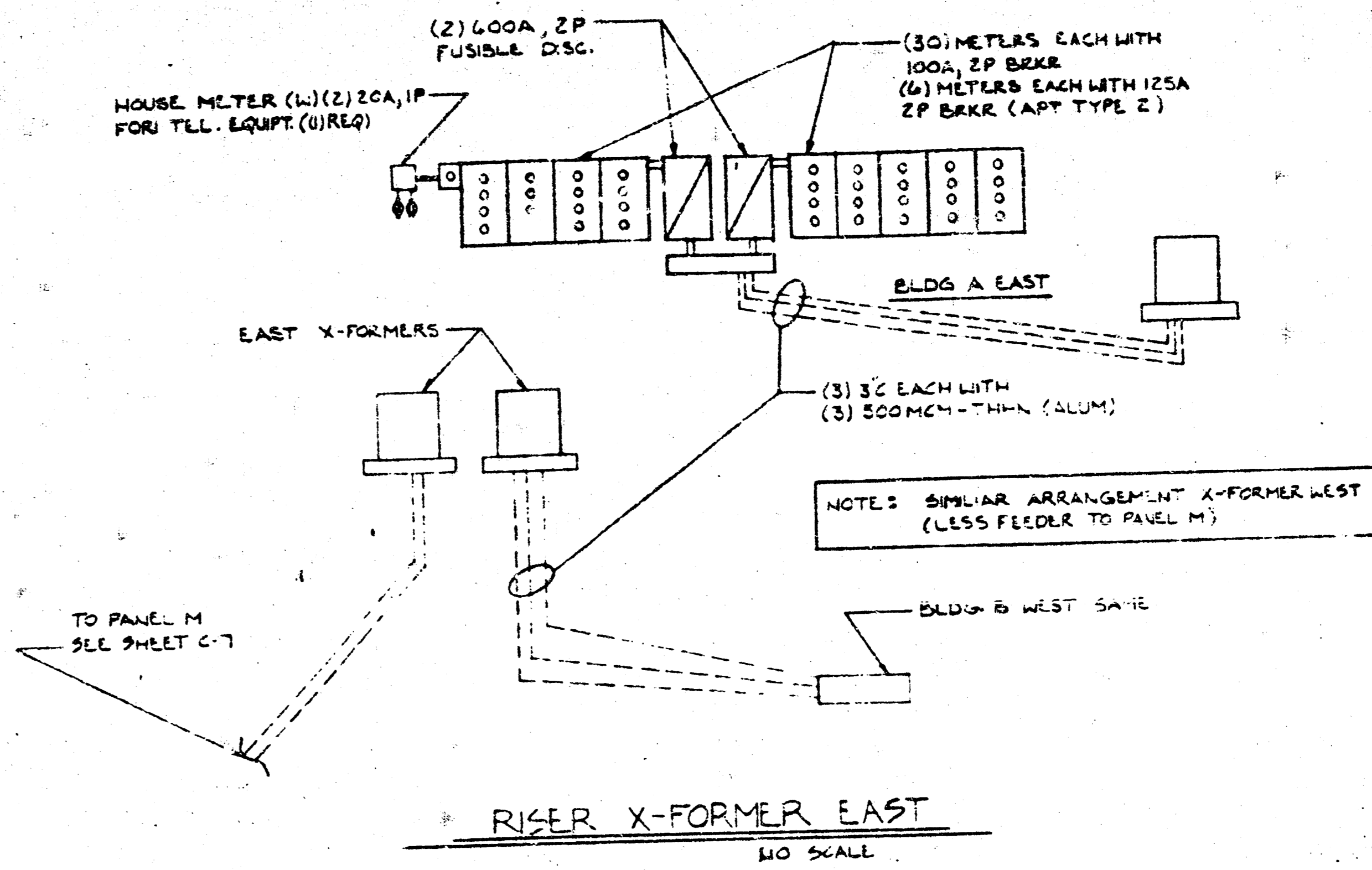
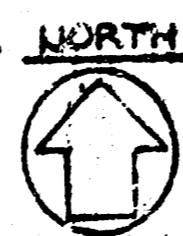


SITE UTILITY PLAN  
SCALE: 1/8" = 1'-0"



EAST WEST SEWER  
CITY PROJECT NO. 468-76-245-80911-000-000

NOTE TO CONTRACTOR  
This project will be constructed under the supervision of the CITY ENGINEER and conforming to the SPECIFICATIONS of the CITY OF WICHITA. The CONTRACTOR will reimburse the City of Wichita for all cost of engineering, design, and inspection.

APPROVED AND SIGNED  
By CITY ENGINEER, WICHITA  
Sanitary Sewers 1/24/80 ege  
Storm Sewers  
Way Approaches

Storm Engineering  
25 WESTING ENGINEERS  
ROOM 408 AM 2-1281  
154 LAURA, WICHITA



REVISED 1/24/80  
CHECKED  
DRAWN  
DATE 20 SEPT. 79  
KEY 24 JAN 1980

LAWRENCE E. WELLS  
A R C H I T E C T

254 LAURA, SUITE 205  
WICHITA, KANSAS 67211

SITE UTILITY PLAN

PLAZA WEST APARTMENTS

PLAN NO. C-348 PROJECT 296

SHEET 5 OF 5