

Station 10+00
Const Std Type "A" or "C"
Manhole

Station 12+10
Const Std Type "A" or "C"
Manhole

Station 14+15.5
Const Std Type "A" or "C"
Manhole

BLECKLEY DR.

THIRD ST.

ROBINSON JUNIOR HIGH SCHOOL

NEW 10" VCP

Existing 8" @ 0.226%

Station 8+49.9 15" Right
Construct Std Type "A" or "C"
Manhole over Exist 8" Line
Plug 8" North.

Station 9+45.9
Construct Std Type "A" or "C"
Manhole over Exist 8" Line
Plug 8" South.

Station 15+65.9
Connect to Exist
Manhole FL=161.32

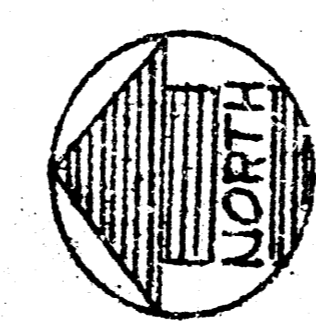
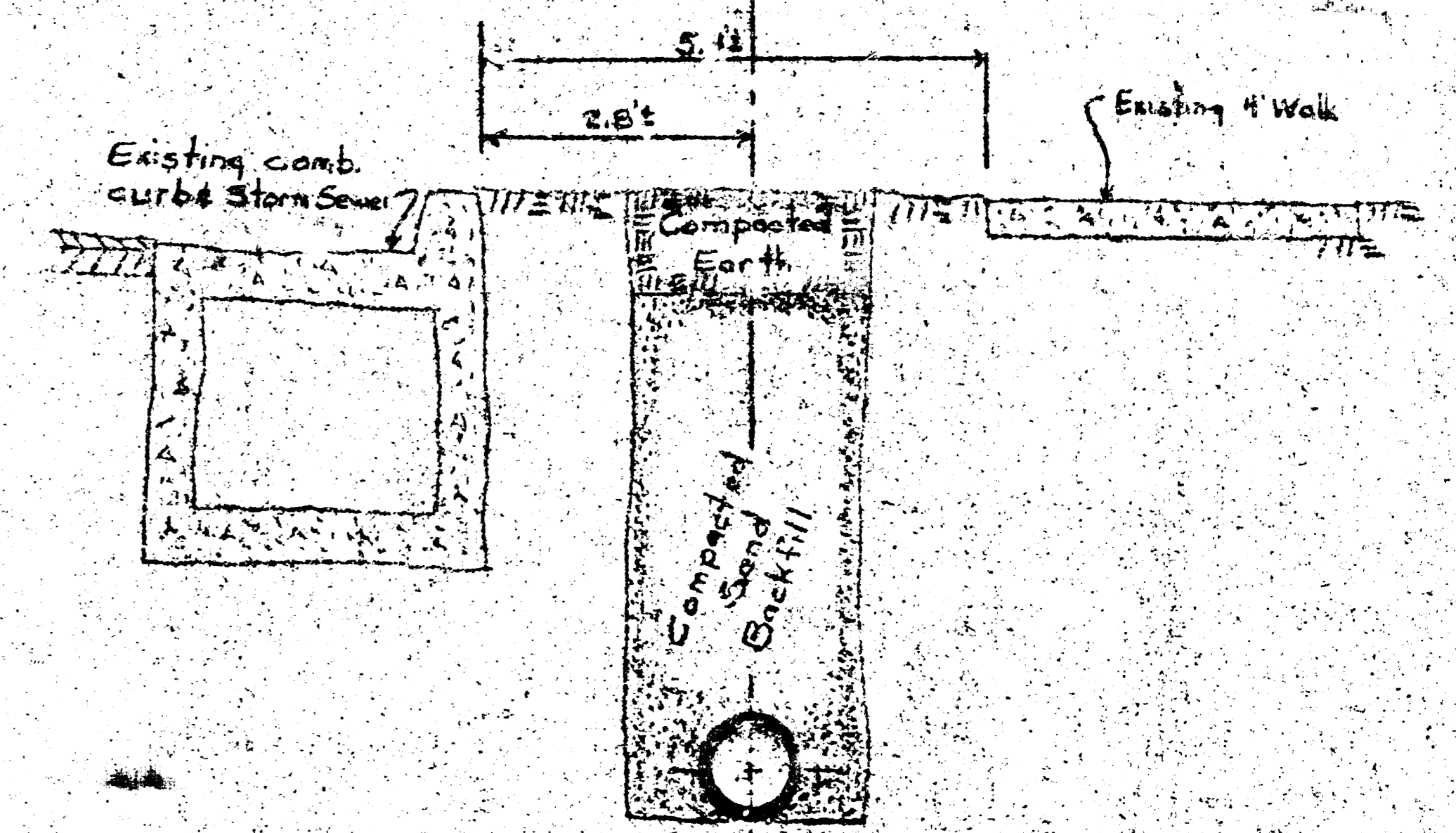
- 245 Curb Inlet
- 4' Walk
- No Parking sign
- Bicycle rack (2ea)
- 3' Pine
- Dip sign
- 4' Walk
- power pole
- telephone pole
- 245 Curb Inlet
- Existing MH, FL out=162.34

NOTES

1. Remove and replace sidewalk and pavement only where necessary to complete the sewer installation.
2. All materials and installation are subject to city approval.

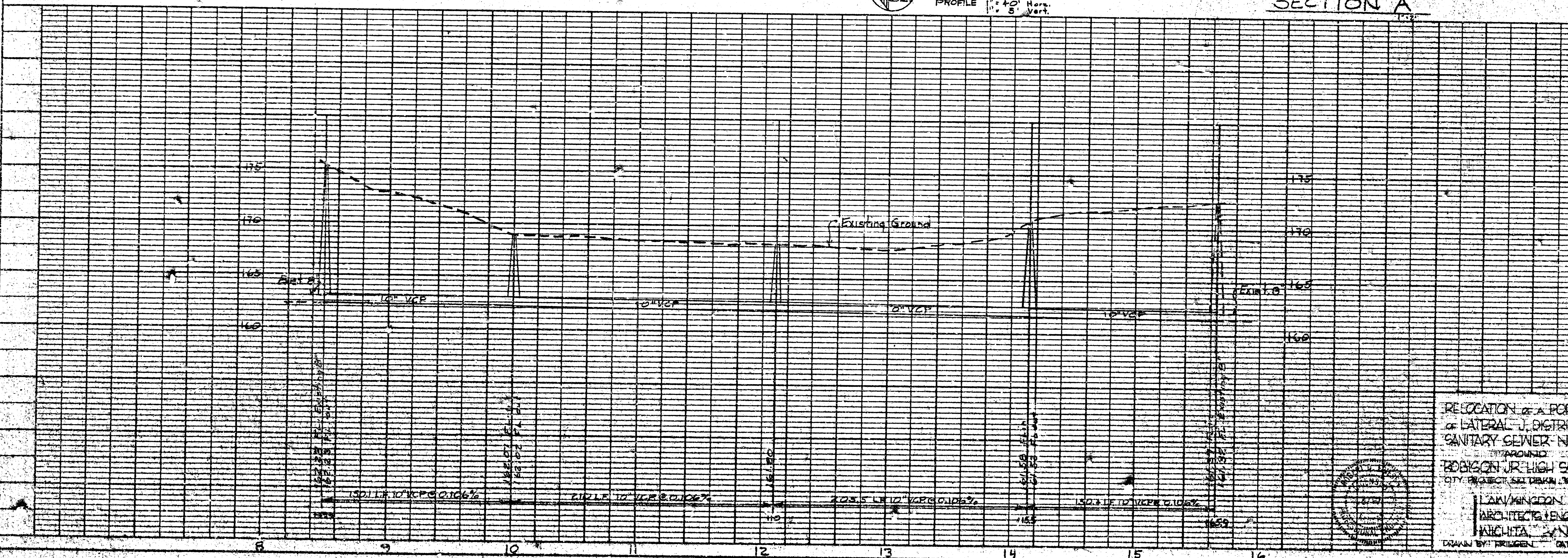
NOTE TO CONTRACTOR
This project will be constructed under the supervision of the CITY ENGINEER and conforming to the SPECIFICATIONS of the CITY OF WICHITA. The CONTRACTOR will reimburse the City of Wichita for all cost of inspection.

4-29-75
APPROVED AS NOTED
By CITY ENGINEER OF WICHITA
Sanitary Sewers *P. E. S.*
Storm Sewers
Driveway Approaches



SCALE
PLAN 1"=40'
PROFILE 1"=40' Vert.
1"=5' Vert.

SECTION "A"



RELOCATION OF A PORTION
OF LATERAL J, DISTRICT C
SANITARY SEWER - NG 12
AROUND
ROBINSON JR. HIGH SCHOOL
CITY PROJECT SET DRAWN 10/20/75

LAWKINGTON P.A.
ARCHITECTS ENGINEERS
WICHITA, KANSAS

DRAWN BY: FRIDGEN DATE: 4/20/75