

SHEET NO.	TOTAL SHEETS
1	5

# PLANS FOR SANITARY SEWER IMPROVEMENTS AND STORM WATER SEWER IMPROVEMENTS

FOR  
LOT 4, BLOCK 1  
ROCKWOOD CENTER 2ND ADDITION  
CITY OF WICHITA PRIVATE PROJECT NO. 465PPS (607861)

- INDEX OF SHEETS**
1. TITLE SHEET
  2. PLAN
  3. SANITARY SEWER PROFILES
  4. STORM WATER SEWER PROFILES
  5. 24" x 30" HEADWALL AND RIPRAP DETAILS

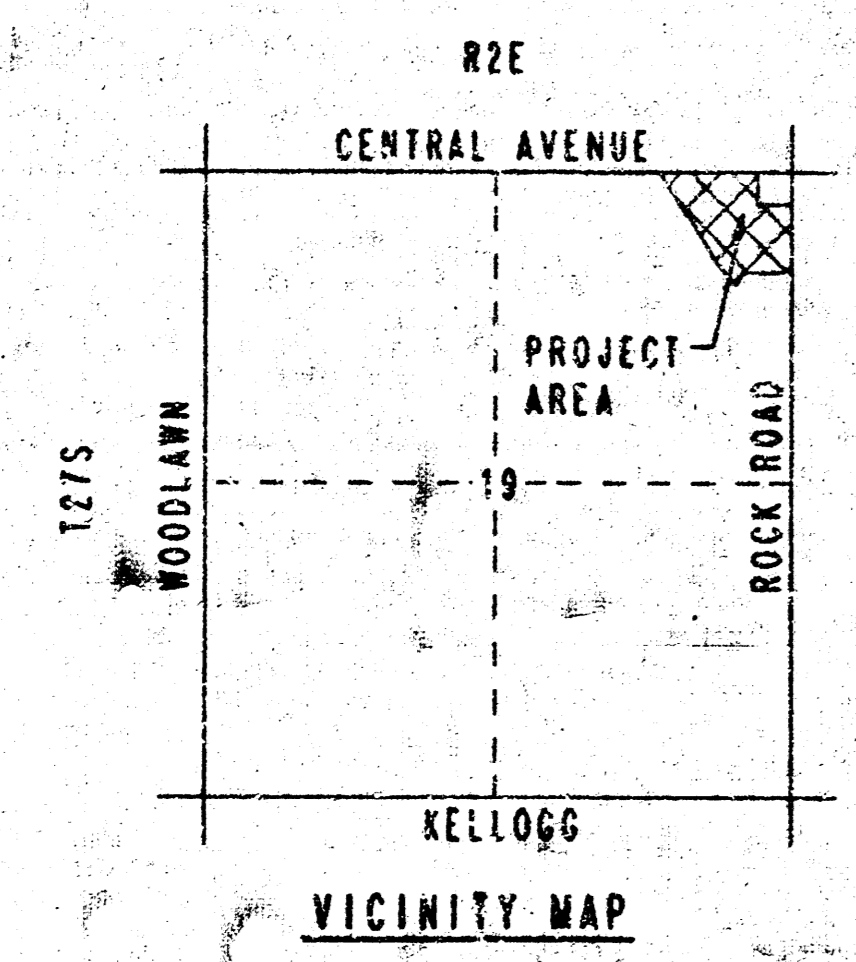
**NOTES**

ALL STORM WATER AND SANITARY SEWER TO BE CONSTRUCTED IN ACCORDANCE WITH CITY OF WICHITA STANDARD SPECIFICATIONS AS MODIFIED BY THE SPECIAL PROVISIONS. ALL INLETS AND MANHOLES TO BE CONSTRUCTED IN ACCORDANCE WITH CITY OF WICHITA STANDARD DETAILS, SPECIFICATIONS AND DETAILS ARE ON FILE AT THE OFFICE OF THE CITY ENGINEER, 7TH FLOOR CITY HALL.

*Horizontal location staked and constructed in accordance with plans*

*S.E. Anderson PE/LS  
Consulting Engineer  
Whitewater, Kansas  
August, 1994*

*Easement To Be Added Between MH3 & MH4  
Booked 9/6/94  
JHB  
From As Bails*



APPROVED AS NOTED  
BY CITY ENGINEER OF WICHITA

SANITARY SEWERS VRH 5/31/94  
STORM SEWERS VRH 5/31/94  
DRIVEWAY APPROACHES \_\_\_\_\_  
WATER MAINS \_\_\_\_\_  
PAVING \_\_\_\_\_

**NOTE TO CONTRACTOR**

INSPECTION AND TESTING FOR THIS PROJECT IS TO BE PROVIDED BY A LICENSED CONSULTING ENGINEERING FIRM UNDER CONTRACT WITH THE OWNER/DEVELOPER. SAID INSPECTION TO BE IN ACCORDANCE WITH THE CITY OF WICHITA STANDARD CONSTRUCTION ENGINEERING PRACTICES AND CERTIFIED BY A LICENSED PROFESSIONAL ENGINEER. NO WORK SHALL BE PERFORMED IN DEDICATED EASEMENTS OR PUBLIC RIGHT-OF-WAY BY THE CONTRACTOR WITHOUT SUCH INSPECTION NOR SHALL ANY WORK BE COMMENCED IN DEDICATED EASEMENTS OR PUBLIC RIGHT-OF-WAY WITHOUT WRITTEN AUTHORIZATION BY THE CITY ENGINEER.

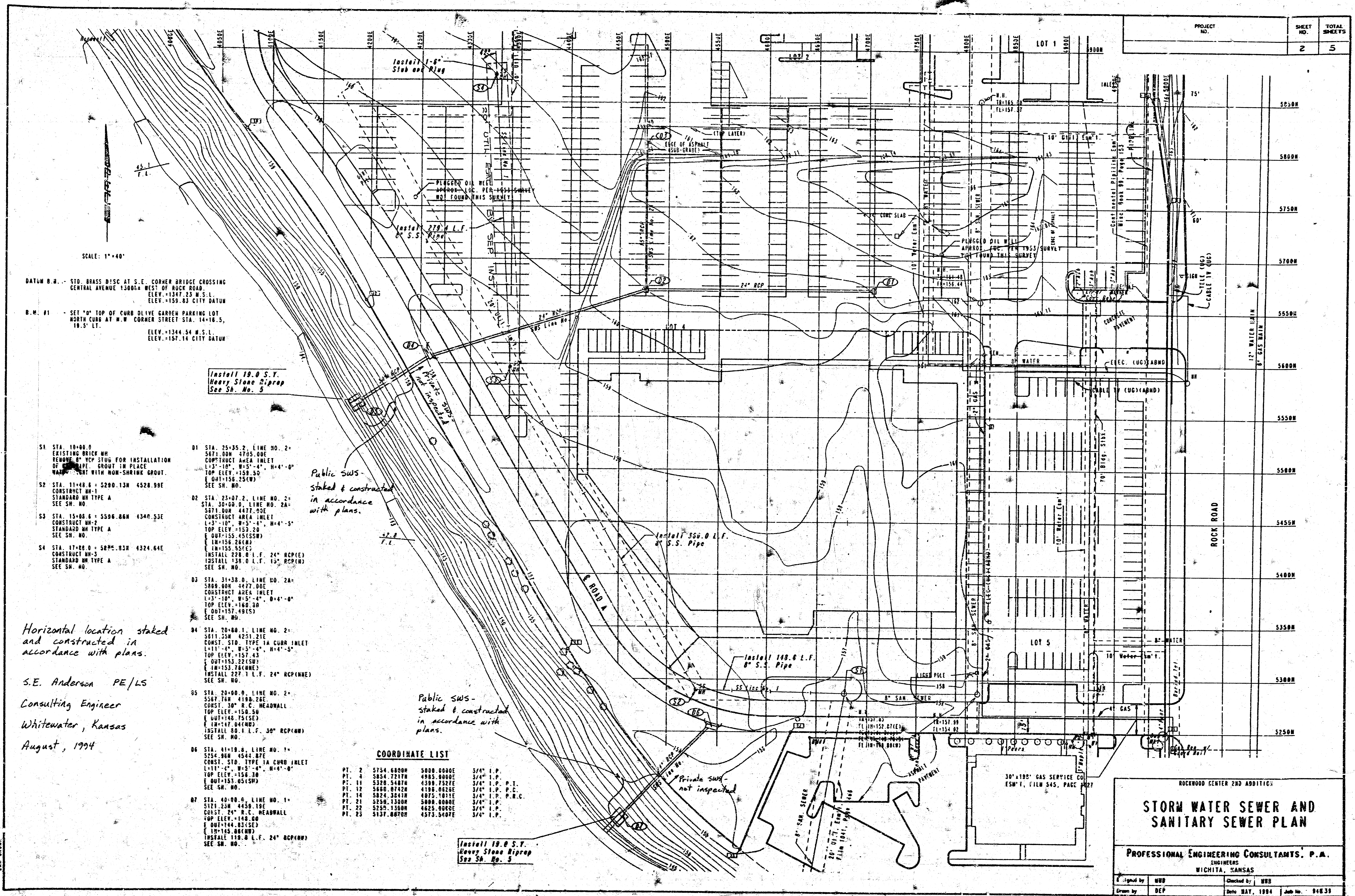
**MAY, 1994**

PLANS PREPARED BY  
**PROFESSIONAL ENGINEERING CONSULTANTS, P.A.  
ENGINEERS  
WICHITA, KANSAS**



DRY-BASIN: 20-24103 SS/SBS TITLE  
LOCATION: 04 041  
DATE: 05/31/94  
DATE LAST WORKED ON:

A2942



SCALE: 1"=40'

DATUM B.M. - STD. BRASS DISC AT S.E. CORNER BRIDGE CROSSING CENTRAL AVENUE 130024 WEST OF ROCK ROAD. ELEV. = 1347.23 W.S.L. ELEV. = 159.83 CITY DATUM

B.M. #1 - SET 10" TOP OF CURB OLIVE GARDEN PARKING LOT NORTH CURB AT N.W. CORNER STREET STA. 14+16.5, 18.5' LT. ELEV. = 1344.54 W.S.L. ELEV. = 157.14 CITY DATUM

DATE	BY	REVISION

- S1 STA. 10+00.0 EXISTING BRICK MH REMOVE & YCP STUD FOR INSTALLATION OF SLOPE GROUT IN PLACE. WASTE HOLE WITH NON-SHRINKING GROUT.
- S2 STA. 11+48.6 - 5290.13N 4528.99E CONSTRUCT MH-1 STANDARD MH TYPE A SEE SH. NO.
- S3 STA. 15+06.6 - 5506.86N 4340.53E CONSTRUCT MH-2 STANDARD MH TYPE A SEE SH. NO.
- S4 STA. 17+08.0 - 5825.83N 4324.64E CONSTRUCT MH-3 STANDARD MH TYPE A SEE SH. NO.

- D1 STA. 25+35.2, LINE NO. 2- 5671.00N 4705.00E CONSTRUCT AREA INLET L=3'-10", W=5'-4", H=4'-0" TOP ELEV. = 159.50 E OUT=156.25(SW) SEE SH. NO.
- D2 STA. 25+07.2, LINE NO. 2- STA. 30+00.0, LINE NO. 2A- 5671.00N 4477.50E CONSTRUCT AREA INLET L=3'-10", W=5'-4", H=4'-5" TOP ELEV. = 159.20 E OUT=155.45(SSW) E IN=155.24(W) E IM=155.55(E) INSTALL 228.0 I.F. 24" RCP(E) INSTALL 138.0 I.F. 15" RCP(W) SEE SH. NO.
- D3 STA. 31+38.0, LINE NO. 2A- 5808.00N 4477.00E CONSTRUCT AREA INLET L=3'-10", W=5'-4", H=4'-0" TOP ELEV. = 160.30 E OUT=157.45(S) SEE SH. NO.
- D4 STA. 20+00.1, LINE NO. 2- 5611.50N 4251.21E CONST. STD. TYPE 1A CURB INLET L=11'-0", W=3'-4", H=4'-5" TOP ELEV. = 157.43 E OUT=153.22(SW) E IM=153.76(WNE) INSTALL 227.1 I.F. 24" RCP(WNE) SEE SH. NO.
- D5 STA. 20+00.0, LINE NO. 2- 5507.74N 4190.28E CONST. 30" R.C. HEADWALL TOP ELEV. = 150.50 E OUT=148.75(SE) E IM=147.04(W) INSTALL 80.0 I.F. 30" RCP(W) SEE SH. NO.
- D6 STA. 41+19.4, LINE NO. 1- 5554.96N 4544.87E CONST. STD. TYPE 1A CURB INLET L=11'-0", W=3'-4", H=4'-0" TOP ELEV. = 156.80 E OUT=153.05(SW) SEE SH. NO.
- D7 STA. 40+00.0, LINE NO. 1- 5171.23N 4450.19E CONST. 24" R.C. HEADWALL TOP ELEV. = 148.00 E OUT=144.85(SE) E IM=145.06(W) INSTALL 119.0 I.F. 24" RCP(W) SEE SH. NO.

Public SWS - Staked & constructed in accordance with plans.

Public SWS - Staked & constructed in accordance with plans.

Private SWS - not inspected

**COORDINATE LIST**

PT. 2	5754.6800N	5000.0000E	3/4" I.P.
PT. 4	5854.7217N	4885.9000E	3/4" I.P.
PT. 11	5328.5487N	4598.7527E	3/4" I.P. P.T.
PT. 12	5666.0742N	4188.8282E	3/4" I.P. P.C.
PT. 14	5824.3041N	4875.1811E	3/4" I.P. P.C.
PT. 21	5258.1300N	5008.0000E	3/4" I.P.
PT. 22	5258.1300N	4825.8000E	3/4" I.P.
PT. 23	5137.8870N	4573.5407E	3/4" I.P.

Install 18.0 S.Y. Heavy Stone Pipe See Sh. No. 5

Horizontal location staked and constructed in accordance with plans.

S.E. Anderson PE/LS  
Consulting Engineer  
Whitewater, Kansas  
August, 1994

DRAWING NAME: ST. 4000 S.  
GENERAL NOTES:  
NOTATION: AS SHOWN  
DATE LIST REVISION ON:  
DAR CROFT

ROCKWOOD CENTER 2ND ADDITION

**STORM WATER SEWER AND SANITARY SEWER PLAN**

PROFESSIONAL ENGINEERING CONSULTANTS, P.A.  
ENGINEERS  
WICHITA, KANSAS

Signed by: MDP      Checked by: MDP  
Drawn by: DEP      Date: MAY, 1994      Job No.: 94E39

DILLONS @ CENTRAL and ROCK  
26-94-033-045  
SS PROFILES

FINAL SURVEY	BY	DATE
REVISED		
PLOTTED		
NOTE BOOK		
AREA		
CHECKED		

ORIGINAL SURVEY	BY	DATE
PLOTTED		
NOTE BOOK		
AREA		
CHECKED		

