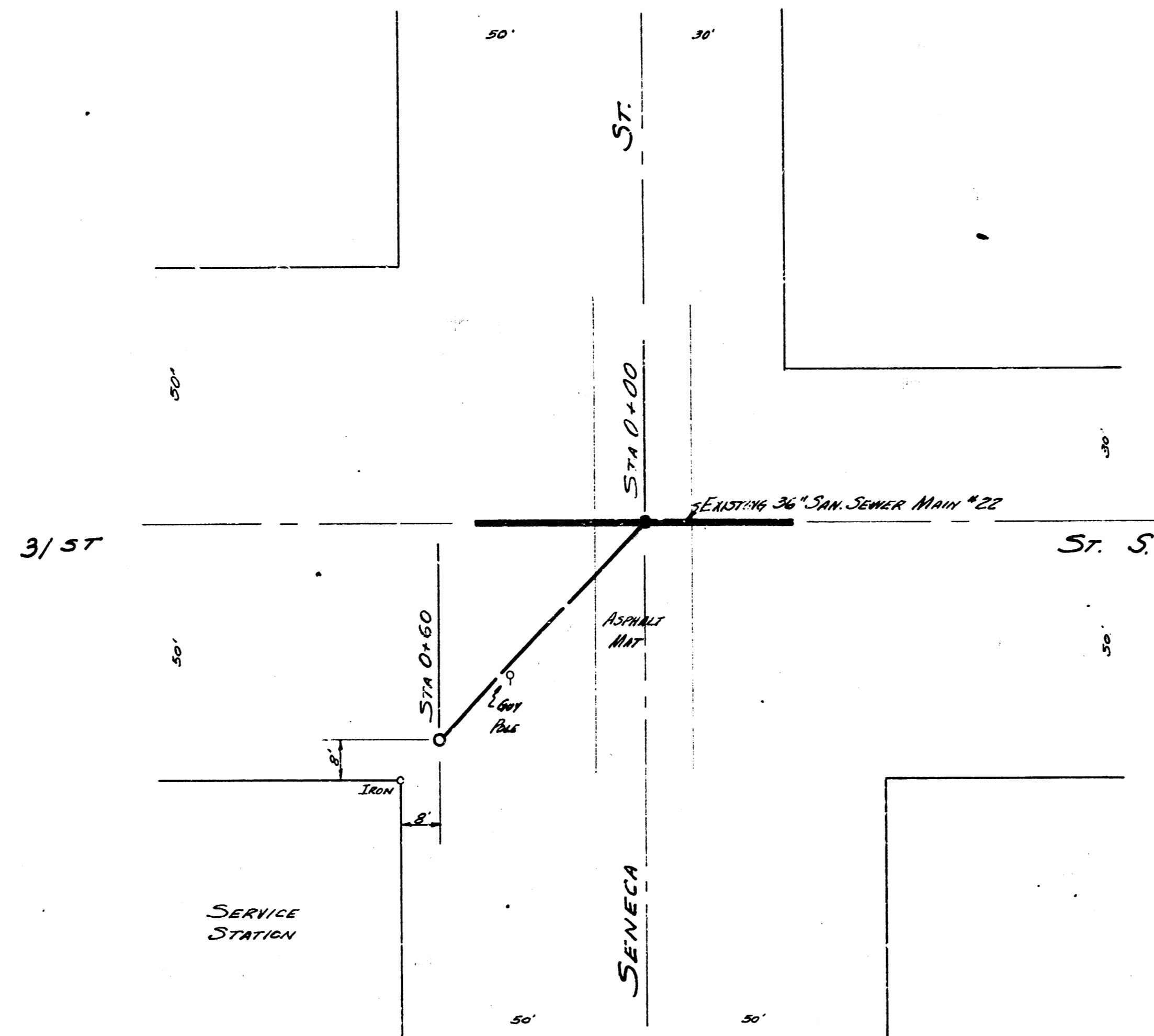


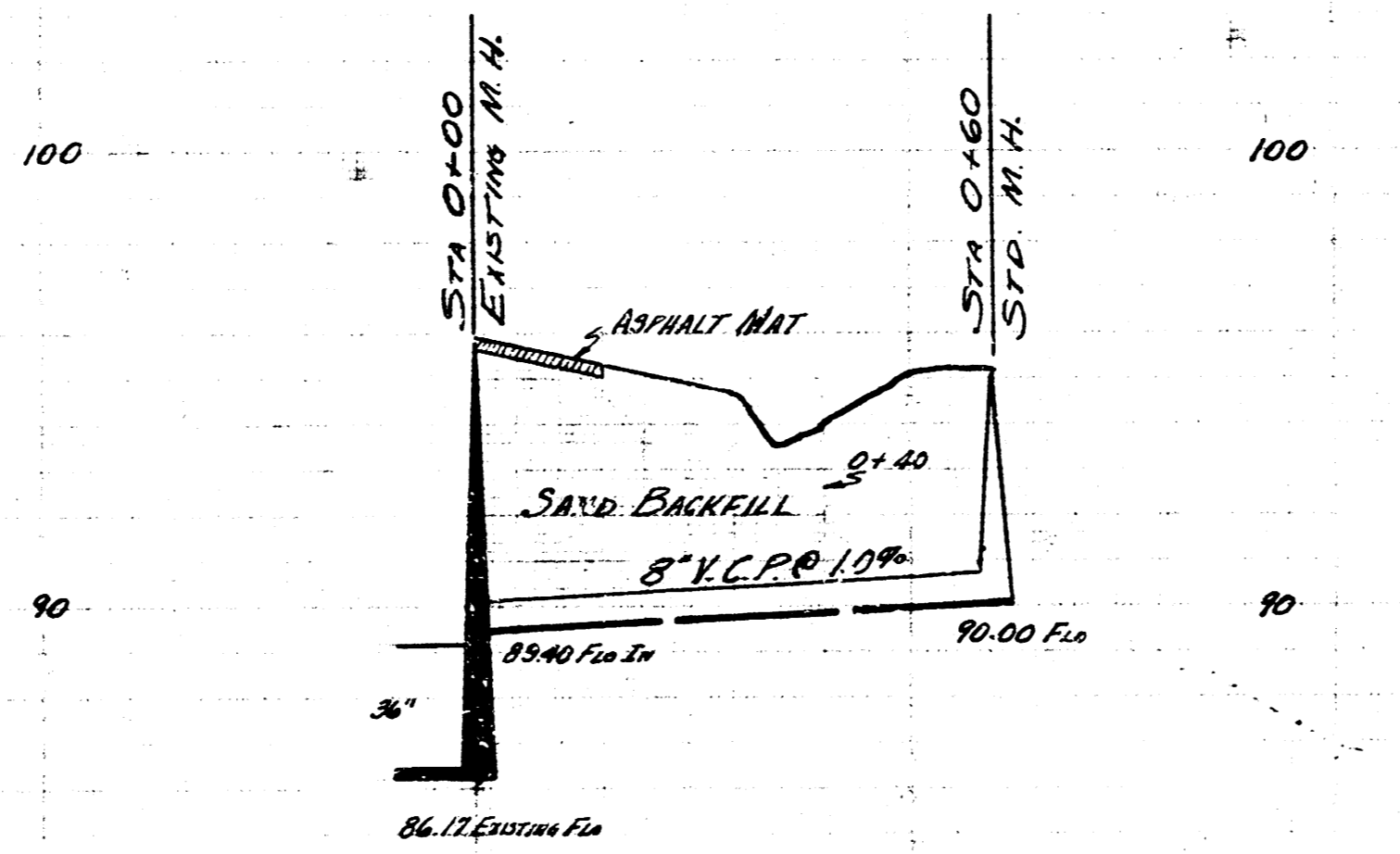
Surveyed by J. Hanson, November 1948  
 Checked by D. Seiders  
 Date May 1955

B.M. 95.76 S.D. SE Cor. 31st & Seneca



PLAN SCALE 1"=20'  
 PROFILE SCALE 1"=20' HORIZONTAL 1"=4' VERTICAL

NOTE THE SEWER DITCH UNDER THE EXISTING ASPHALT MAT ON SENECA IS TO BE SAND FILLED, FLESHED AND RESURFACED WITH ASPHALTIC CONCRETE.



60 Lin. Ft. 8" V.C.P. @ 1.0%

PRIVATE LATERAL SANITARY SEWER 22  
 PRIVATE SEWER FOR SERVICE  
 STATION SW COR. SENECA & 31ST S.  
 CITY OF WICHITA KANSAS  
 B.E. SMITH CITY ENGINEER  
 MAY, 1955 PRIVATE JOB

6 4 5 3