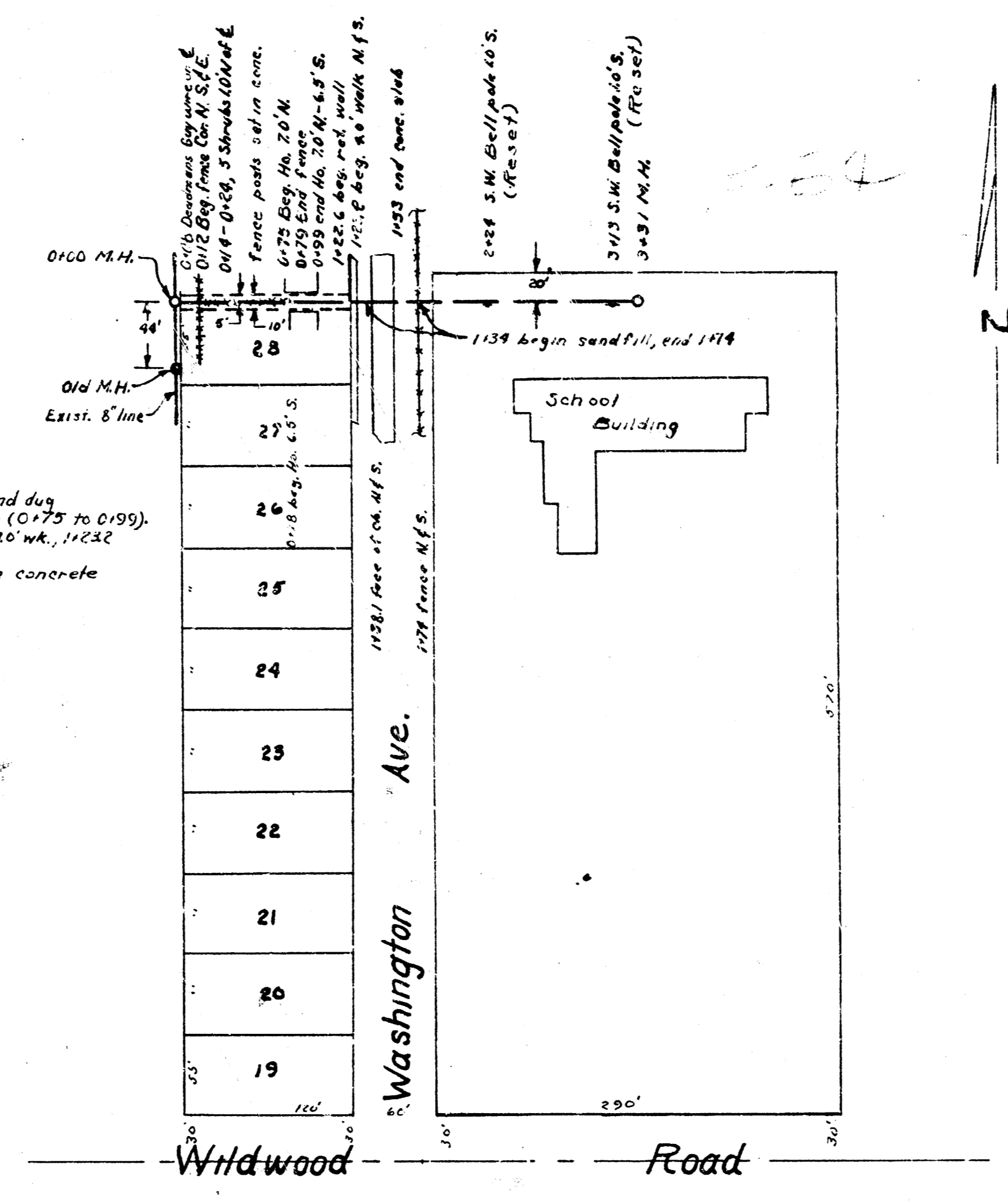


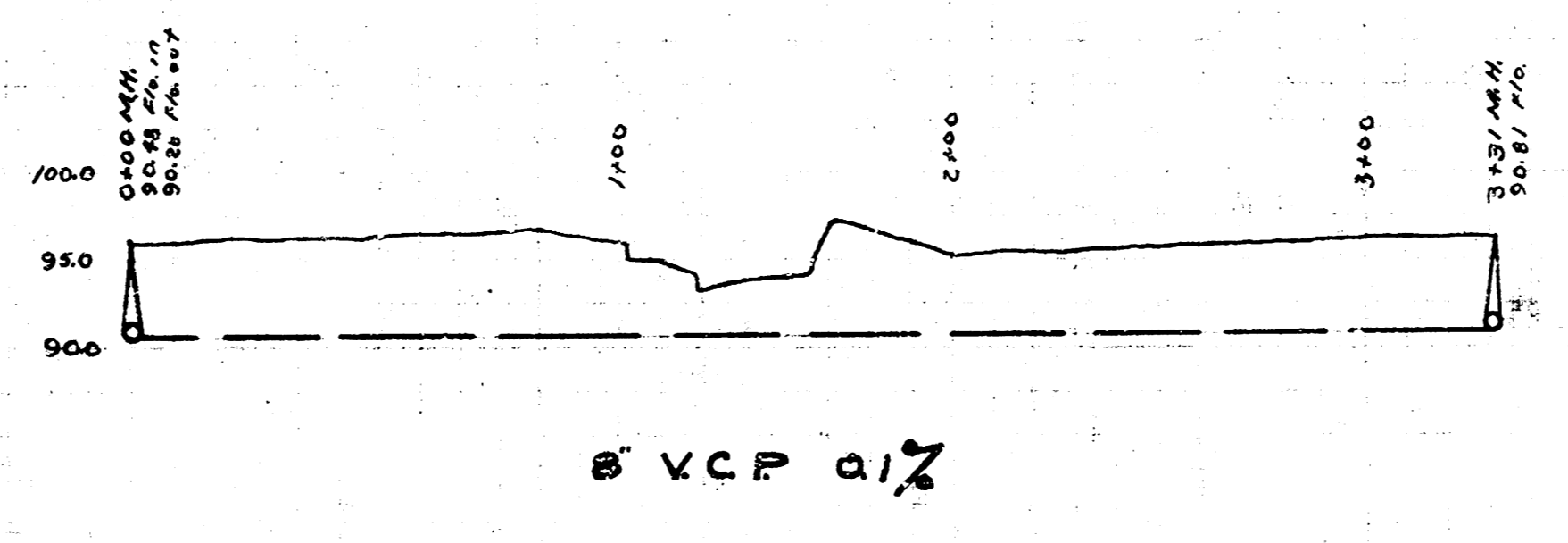
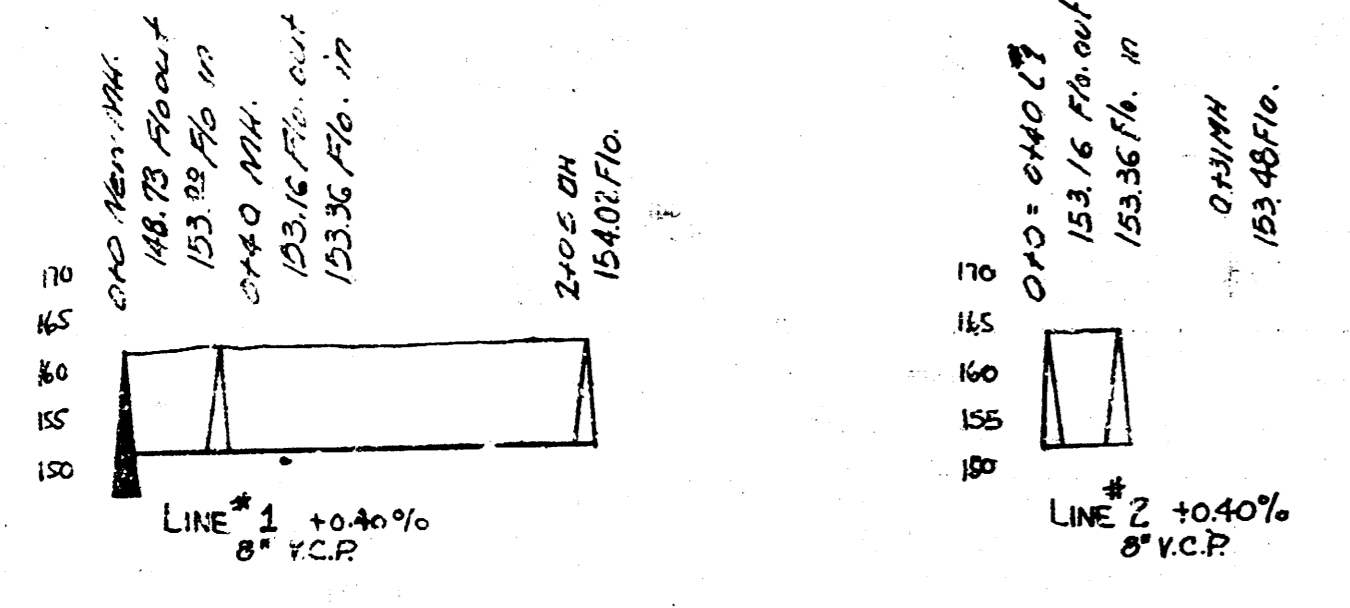
LAT. 42, DRY CREEK SUBMAIN, SS#12

B.M. 9746 SE Corner Cox, Patch, base SW Cor. Gilbert & Dellirose  
 B.M. 9745 6" in Globe Position of (North end) of base 45' Cor.

Note: Ditch to be hand dug between houses (0125 to 0199).  
 Remove & replace 40' w/c, 11252 to 11222  
 Remove & replace concrete 11375 to 1155



B.M. 9758 T in Tree, fine hydrant N.W. cor. Mosley & ...  
 B.M. 9747 R/R spike in H.L. Transit for E.C. ...



LAT. 42, DRY CREEK SUBMAIN, SS#12  
 SOUTH WASHINGTON ELEMENTARY SCHOOL  
 CITY OF WICHITA, KANSAS  
 L.K. WHITE - CITY ENGINEER  
 OCT. 6, 1949 - PRIVATE JOB