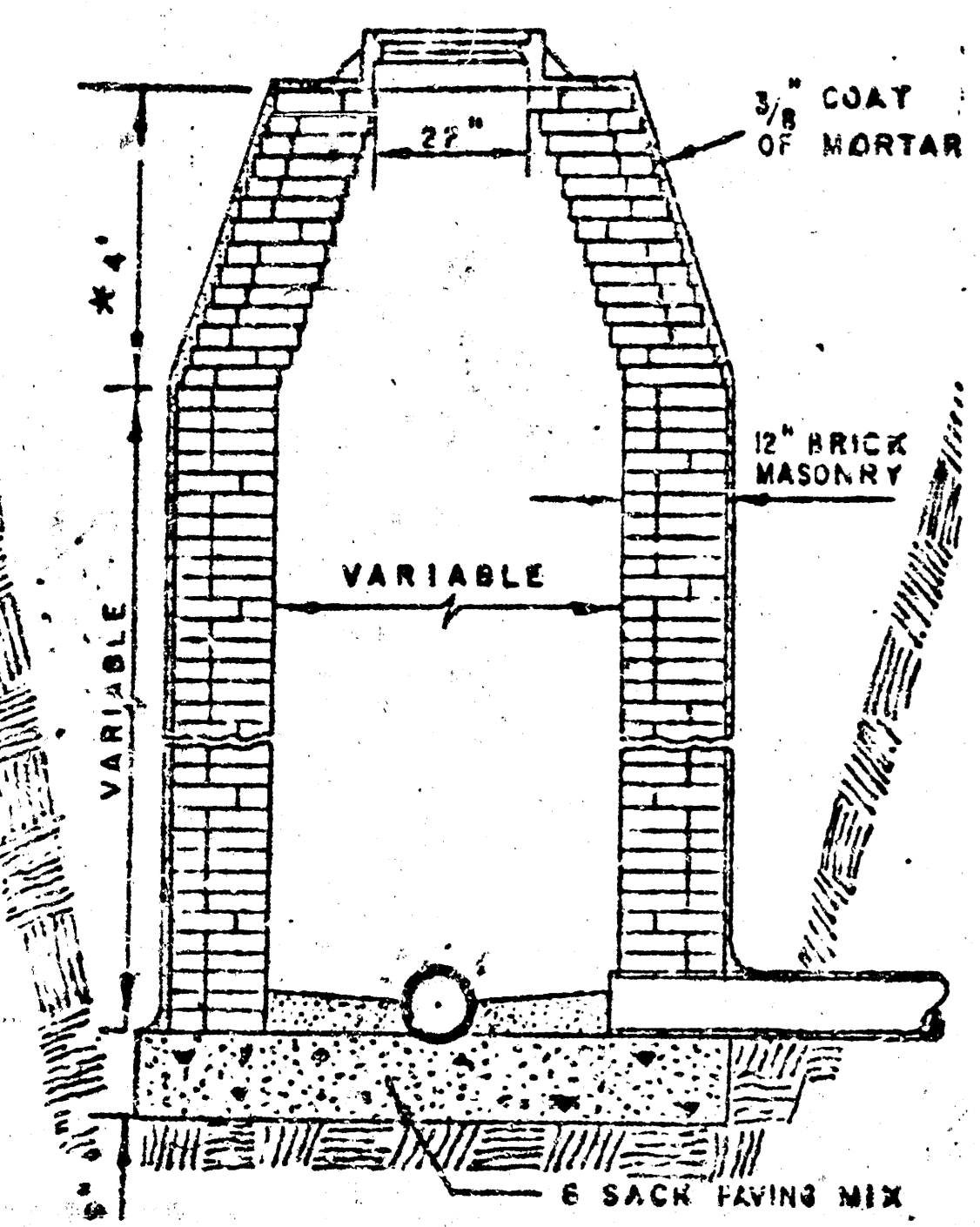
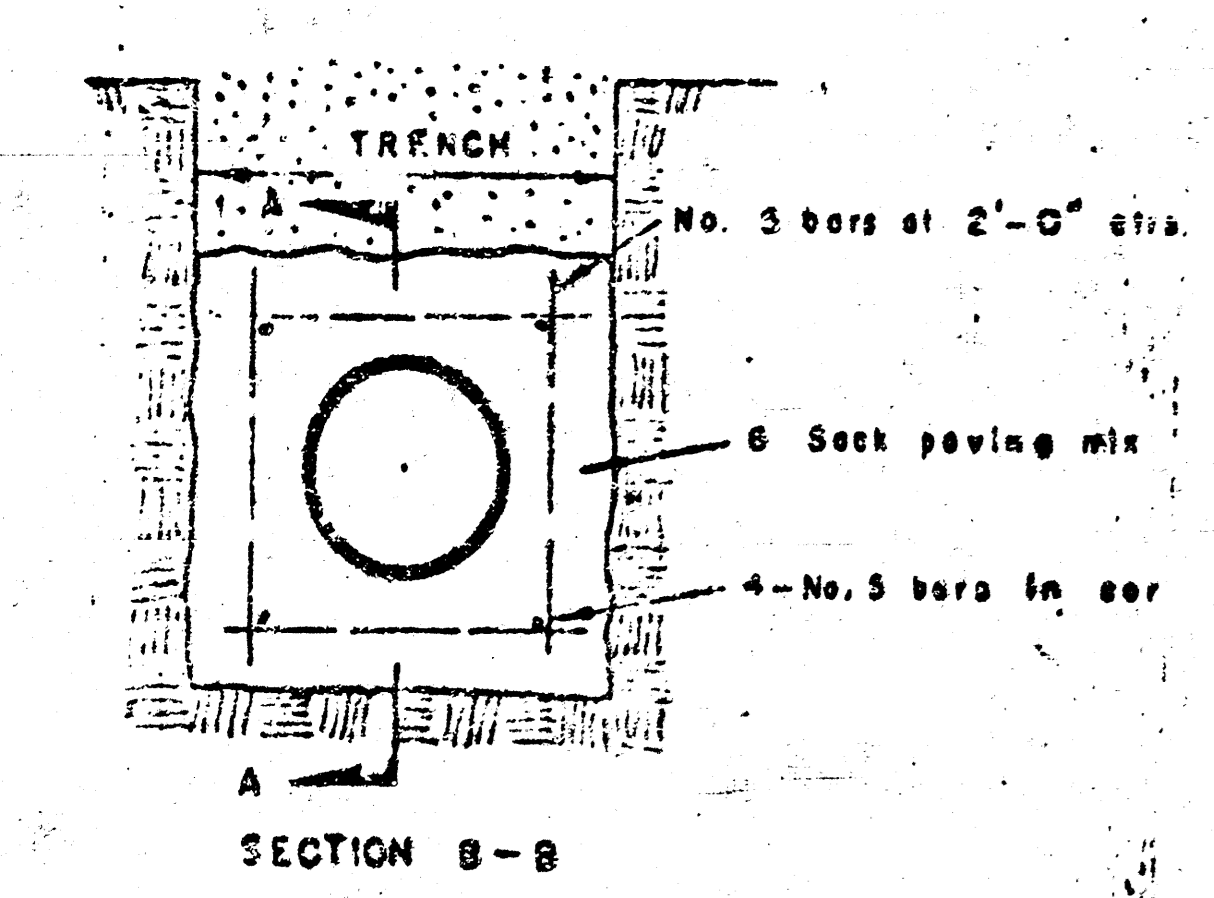
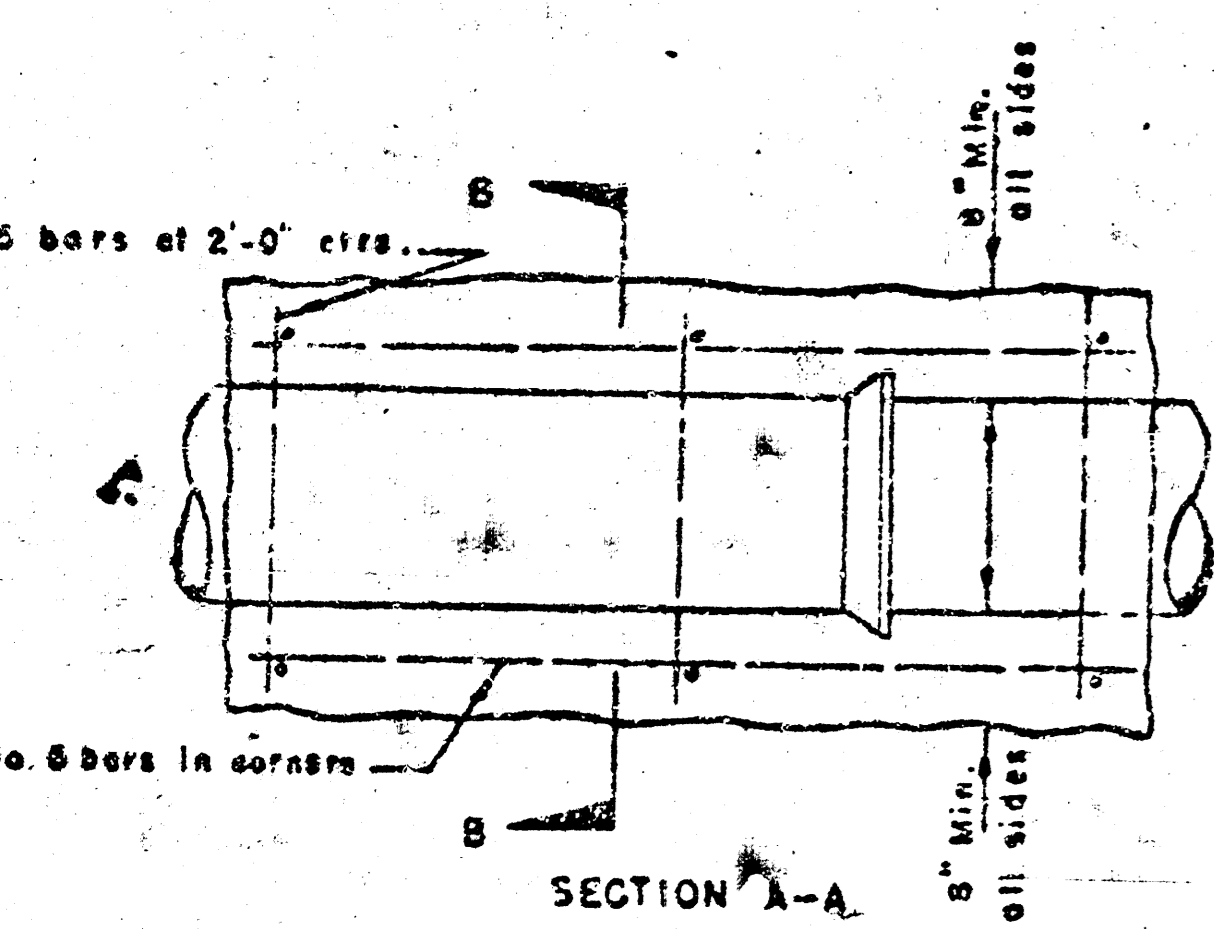


STANDARD MANHOLE TYPE "A"

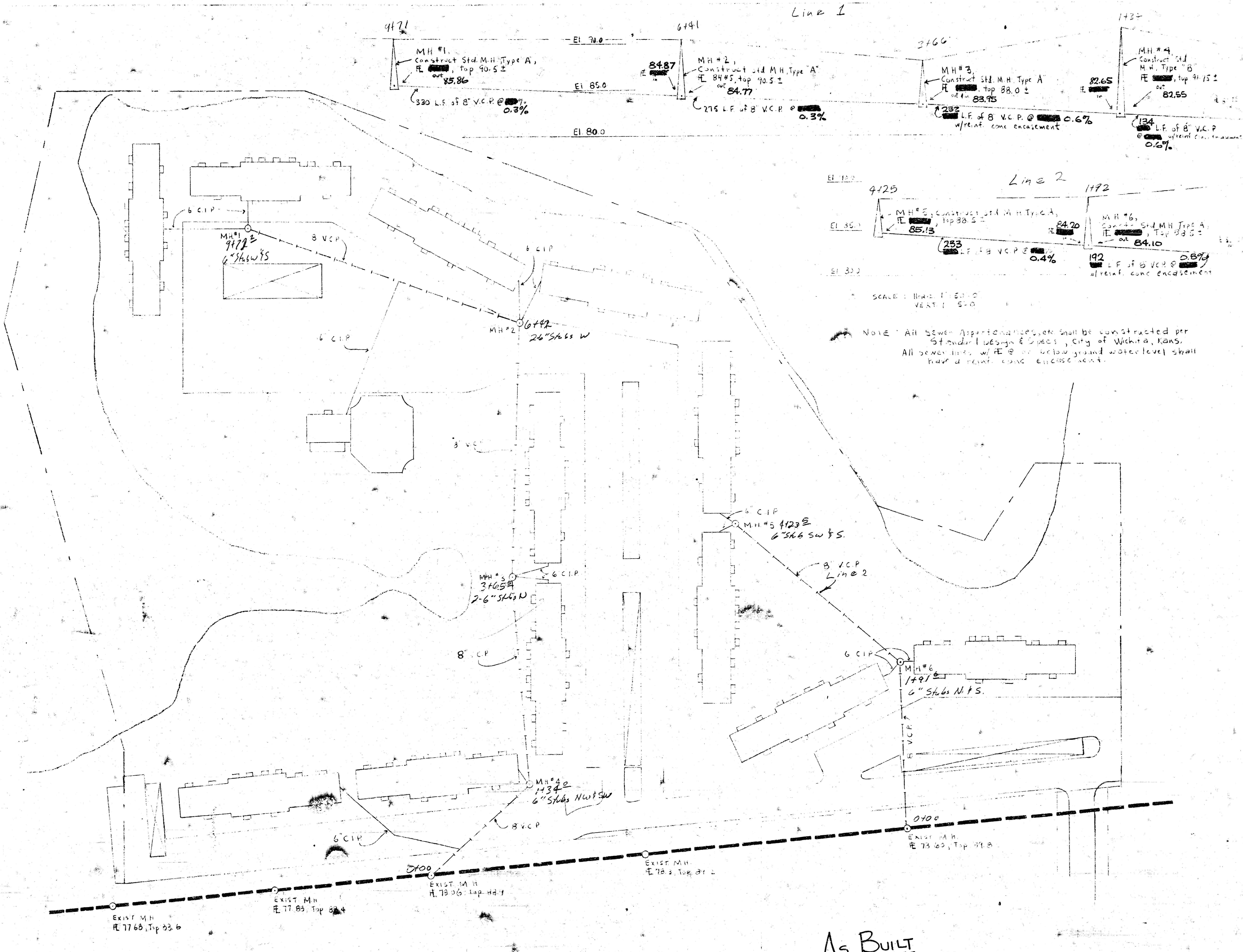
* 6" ON 5" DIA. M.H.



STANDARD MANHOLE TYPE "B"



REINFORCED CONCRETE ENCASEMENT



Line 2
 4125
 MH #5, Construct Std. M.H. Type A, Top 88.5 ±
 E 85.13
 253 LF of 8" V.C.P. @ 0.4%
 1492
 MH #6, Construct Std. M.H. Type A, Top 88.5 ±
 E 84.10
 192 LF of 8" V.C.P. @ 0.87%
 w/rent. conc. encasement

SCALE: HORIZ. 1" = 50.0'
 VERT. 1" = 5.0'

NOTE: All sewer appurtenances shall be constructed per Standard Design & Specs., City of Wichita, Kans.
 All sewer lines with 8" or below ground water level shall have a rent. conc. encasement.

As BUILT