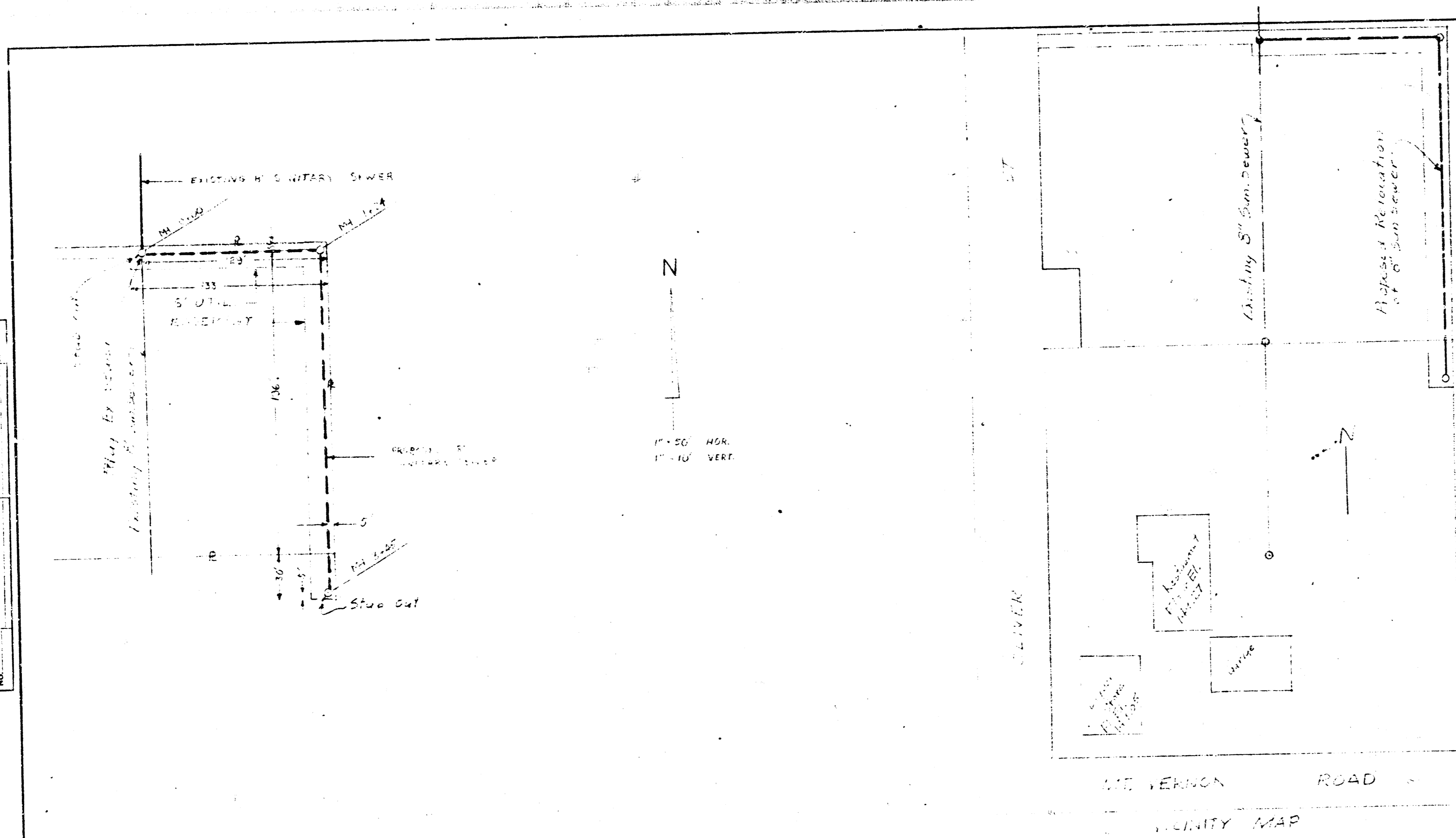
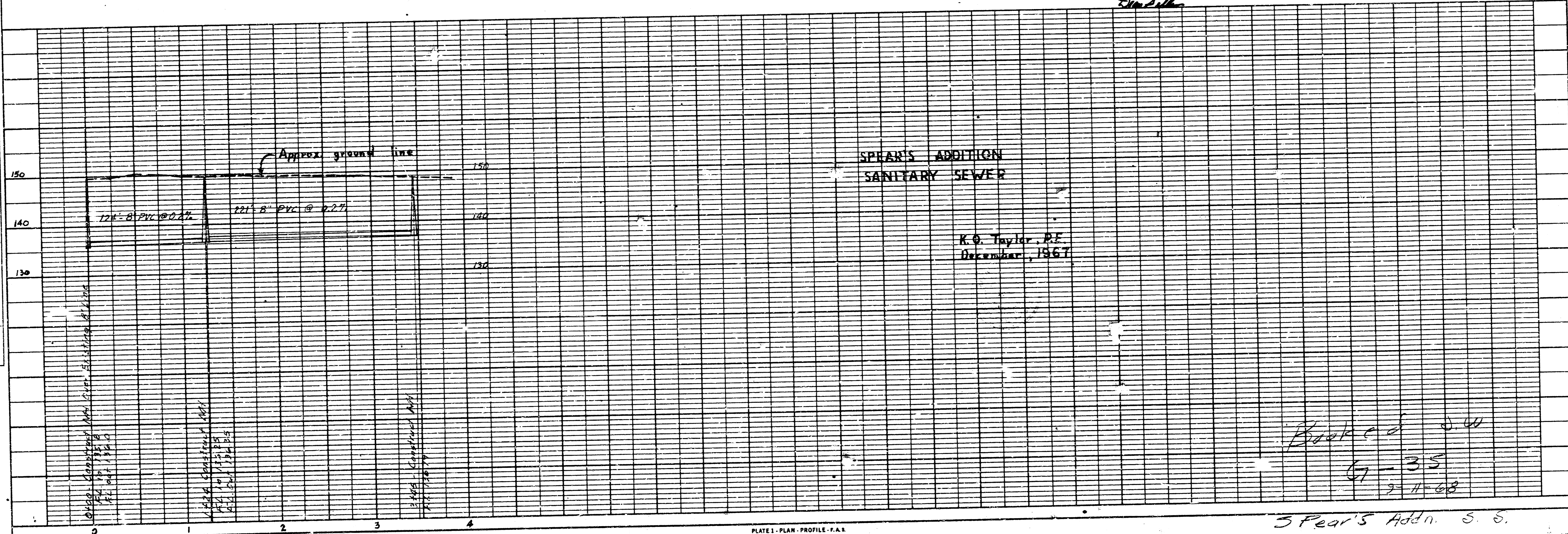


PLAN  
 SURVEYED BY  
 ALUMINUM CITY AND  
 BY THE CITY ENGINEER  
 NO.



**NOTE TO CONTRACTOR**  
 This project will be constructed under the supervision of the CITY ENGINEER and conforming to the SPECIFICATIONS of the CITY OF WICHITA. The CONTRACTOR will reimburse the City of Wichita for all cost of Engineering Plans, etc.

PROFILE  
 SURVEYED BY  
 ALUMINUM CITY AND  
 BY THE CITY ENGINEER  
 NO.



SPEAR'S ADDITION  
 SANITARY SEWER  
 K. O. Taylor, P.E.  
 December, 1967

Book of 50  
 67-35  
 11-68  
 Spear's Addn. S. S.