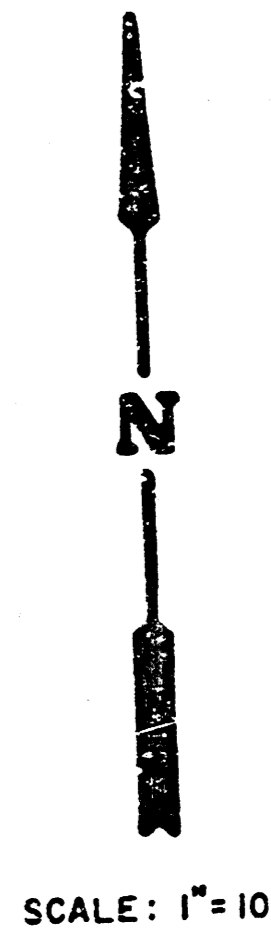


# 37TH ROCK ADDITION

## PROJECT NO. 468 76 245 80000 000 000 008

CITY OF WICHITA, KANSAS  
MICHAEL E. LINDEBAK, CITY ENGINEER  
OCTOBER, 1984



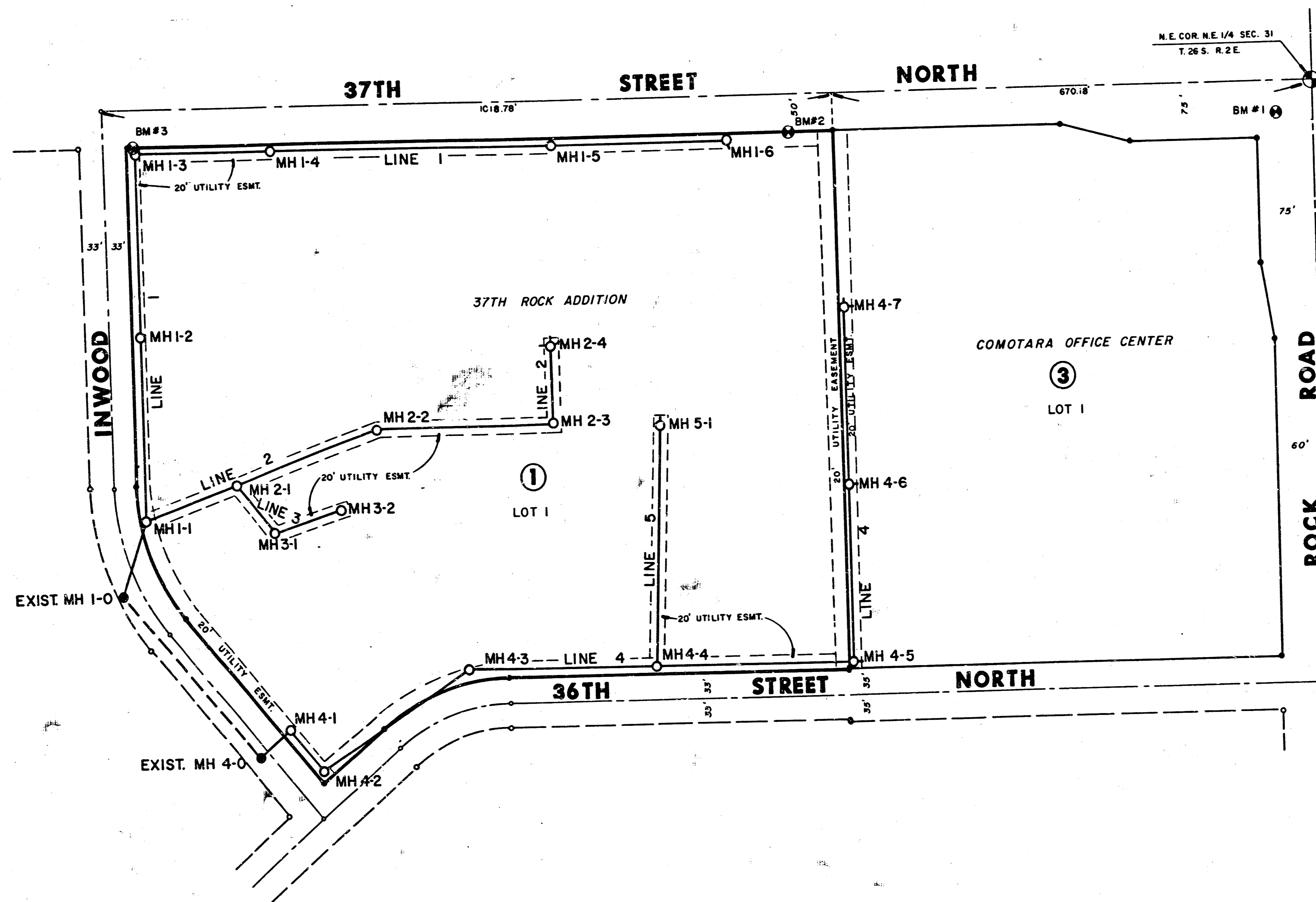
SCALE: 1" = 100'

### GENERAL NOTES

1. THE CONTRACTOR SHALL BE RESPONSIBLE FOR PRESERVING PROPERTY IRONS. THE CONTRACTOR SHALL BE REQUIRED TO RE-ESTABLISH ANY PROPERTY IRONS WHICH ARE DAMAGED OR DESTROYED BY HIS CONSTRUCTION OPERATIONS. SUCH IRONS SHALL BE RE-ESTABLISHED BY A LICENSED LAND SURVEYOR OR A LICENSED PROFESSIONAL ENGINEER IN ACCORDANCE WITH STATE LAWS.
2. A PORTION OF EXCESS EXCAVATED MATERIAL SHALL BE MOUNDING AROUND MANHOLES WHICH EXTEND MORE THAN ONE (1) FOOT ABOVE THE EXISTING GROUND. SUCH MOUNDINGS SHALL BE CONSTRUCTED WITH A SIX (6) FEET DIAMETER FLAT TOP WITH 4 TO 1 SIDE SLOPES DOWN TO THE ORIGINAL GROUND. THE ELEVATION OF THE FLAT TOP OF THE MOUND SHALL BE 0.4 FOOT BELOW THE TOP OF THE MANHOLE.
3. CONTRACTOR SHALL NOTIFY THE UTILITY COMPANIES OF CONSTRUCTION SCHEDULING AND LOCATION OF ANY UNDERGROUND LINES.
4. EXISTING UTILITIES AND THEIR LOCATIONS, AS SHOWN ON THE PLANS, REPRESENT THE BEST INFORMATION OBTAINABLE FOR DESIGN. LOCATION INFORMATION HAS BEEN OBTAINED FROM THE VARIOUS UTILITY COMPANIES AND IS EITHER FROM COMPANY RECORD DRAWINGS OR COMPANY PROVIDED FIELD LOCATIONS. THE PLAN LOCATIONS SHOWN ARE NOT GUARANTEED. ADDITIONAL EXISTING UTILITIES MAY ALSO BE ENCOUNTERED.
5. ALL STUBS AND PLUGGED PIPES SHALL BE LOCATED WITH GREEN PLASTIC TAPE IN THE SAME MANNER AS RISERS.  
COST OF EXCAVATION, HAULING AND DUMPING EXCESS EXCAVATION TO BE SUBSIDIARY TO PROJECT.
6. TREES TO BE REMOVED ARE MARKED WITH A CROSS. ALL TREES WHICH IN THE OPINION OF THE FIELD ENGINEER CAN BE SAVED SHALL BE SAVED.

### BENCHMARKS

- BM # 1: ELEV. 204.11  
City of Wichita BM Disc. 44' S. and 48' W. of  
Intersection Rock Road at 37th Street North.
- BM # 2: ELEV. 199.26  
R.R. Spike in S.S. P/Pole 73067' W. and 50' S. of  
Intersection Rock Road at 37th Street North.
- BM # 3: ELEV. 187.17  
R.R. Spike in S.S. P/Pole 1662.75' W. and 50' S. of  
Intersection Rock Road at 37th Street North.



### INDEX

SHEET	DESCRIPTION
1	TITLE SHEET
2-3	LINE 1
4	LINE 2 & 3
5	LINE 4
6	LINE 4 & 5
7	FINAL PLAT

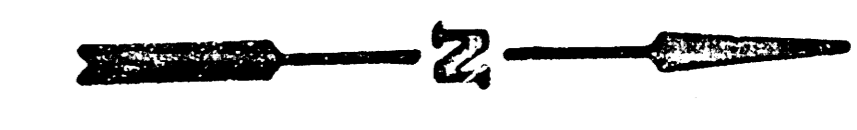
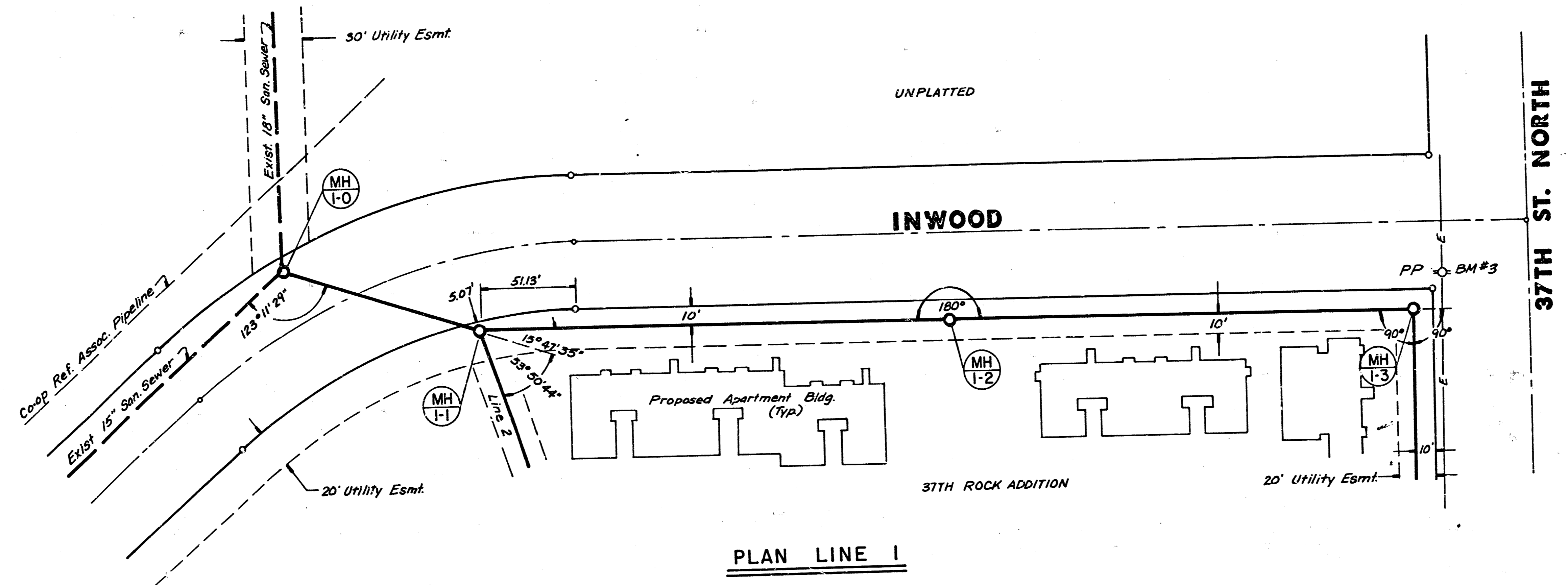
APPROVED  
By: [Signature]  
Date: 10/15/84  
Professional Engineer

J. CONTI  
The owner will be responsible for the supervision of the construction of the sewer system in accordance with the plans and specifications prepared by the contractor. The contractor will prepare and pay for all costs of inspection.

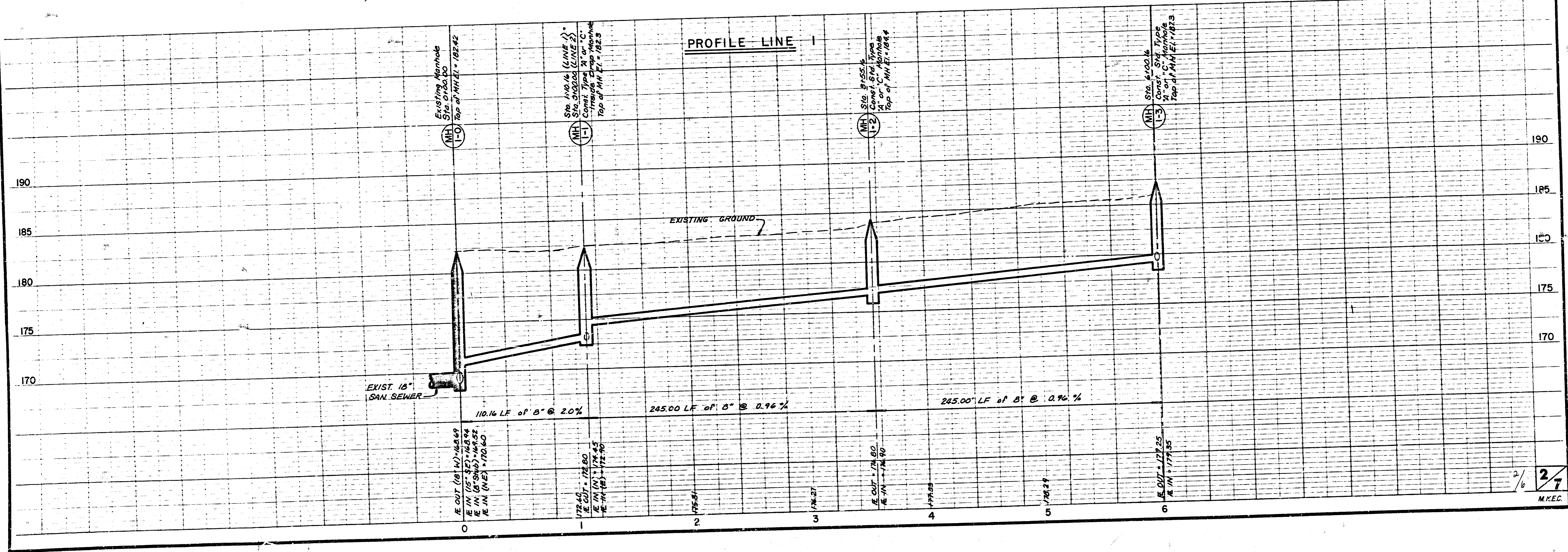


<b>MEK</b>	<b>SANITARY SEWER EXTENSION</b>	Design: KKL Drawn by: KKL Checked by: KHB
	<b>37TH ROCK ADDTN.</b>	Date: OCT. 1984
MID-KANSAS ENGINEERING CONSULTANTS PA 240 NORTH ROCK ROAD SUITE 100 WICHITA, KANSAS 67206		Sheet: 1 of: 7

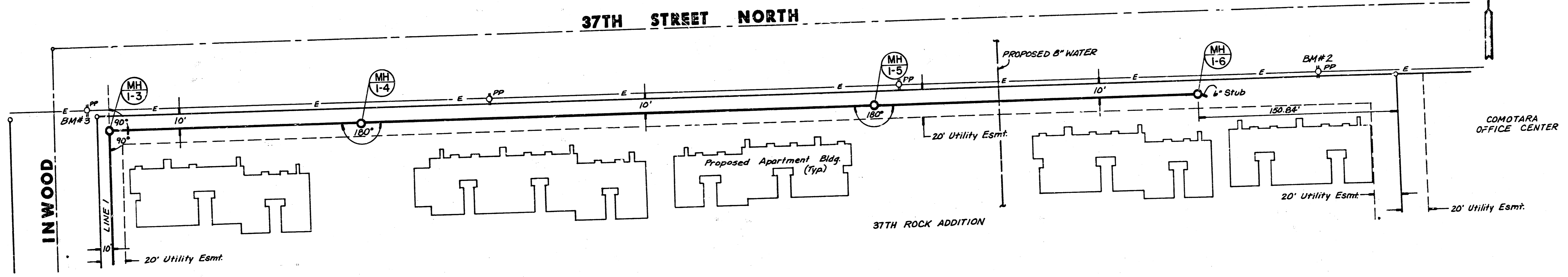
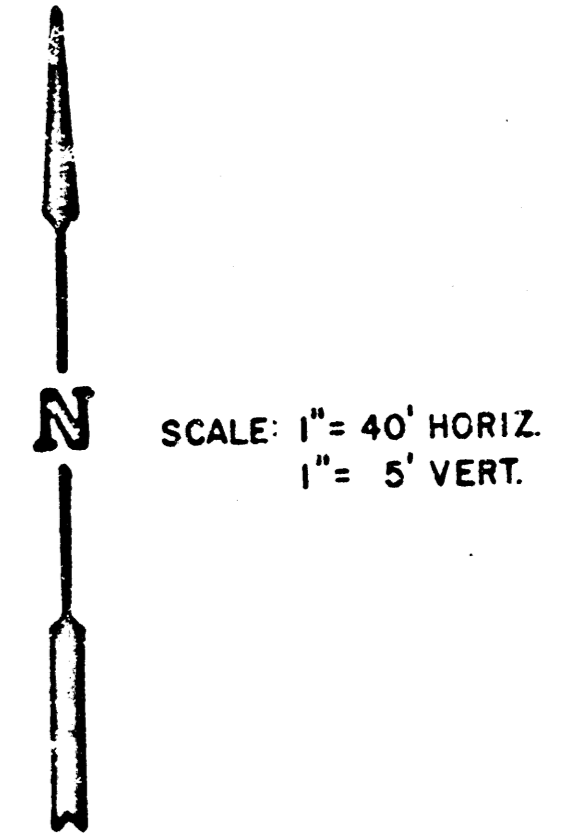
FILMED FROM THE BEST  
AVAILABLE COPY



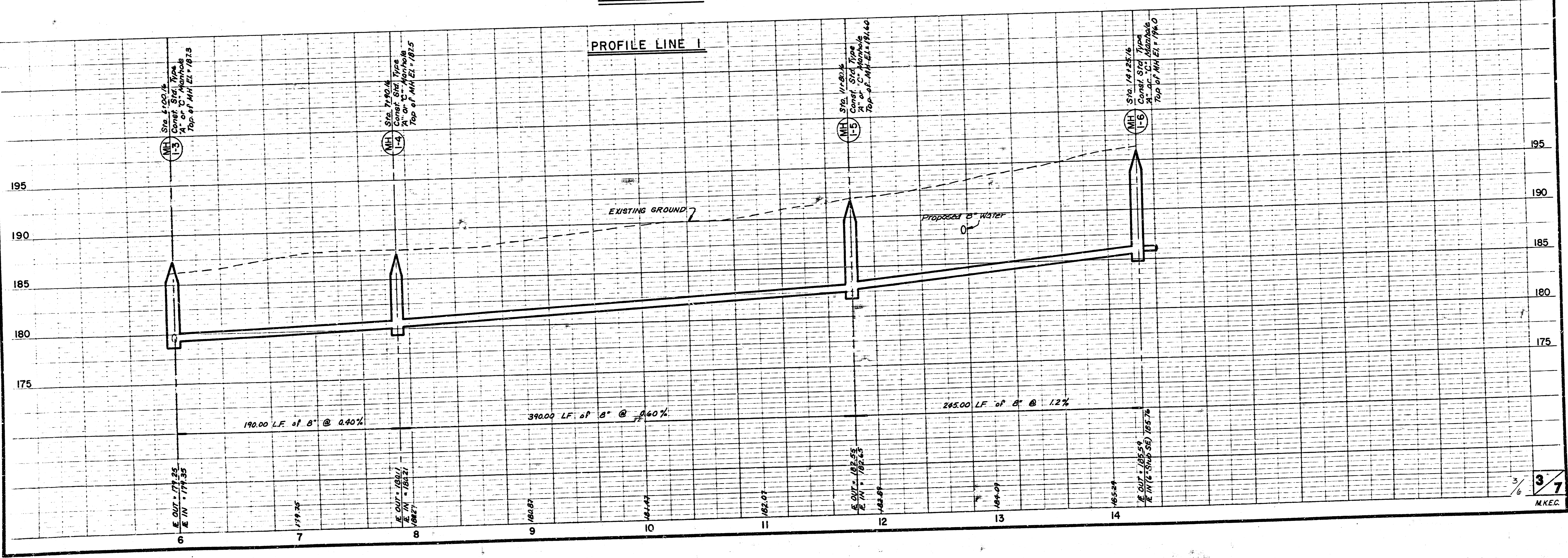
SCALE: 1" = 40' HORIZ.  
 1" = 5' VERT.



2/6 2/7  
 M.K.E.C.

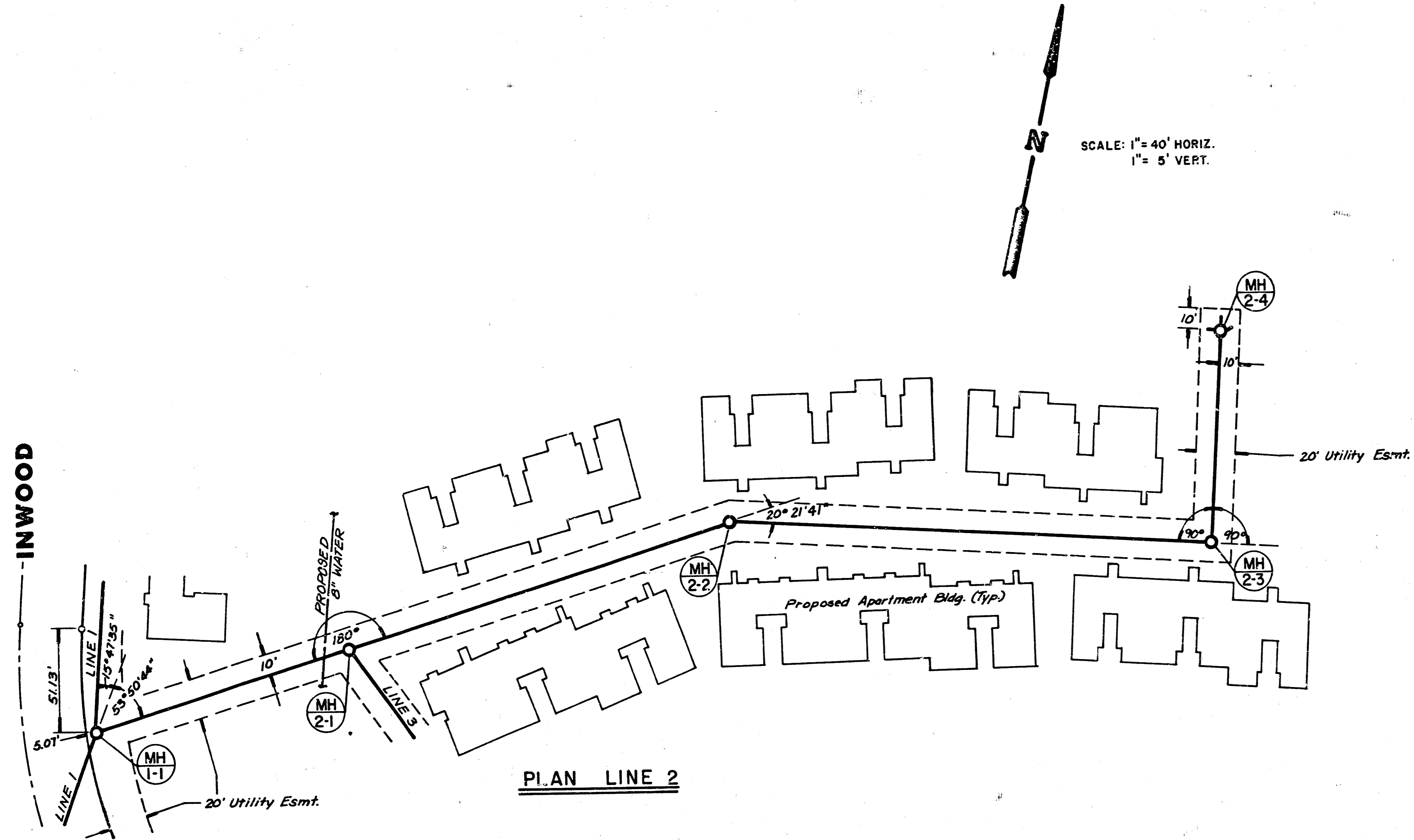


PLAN LINE 1

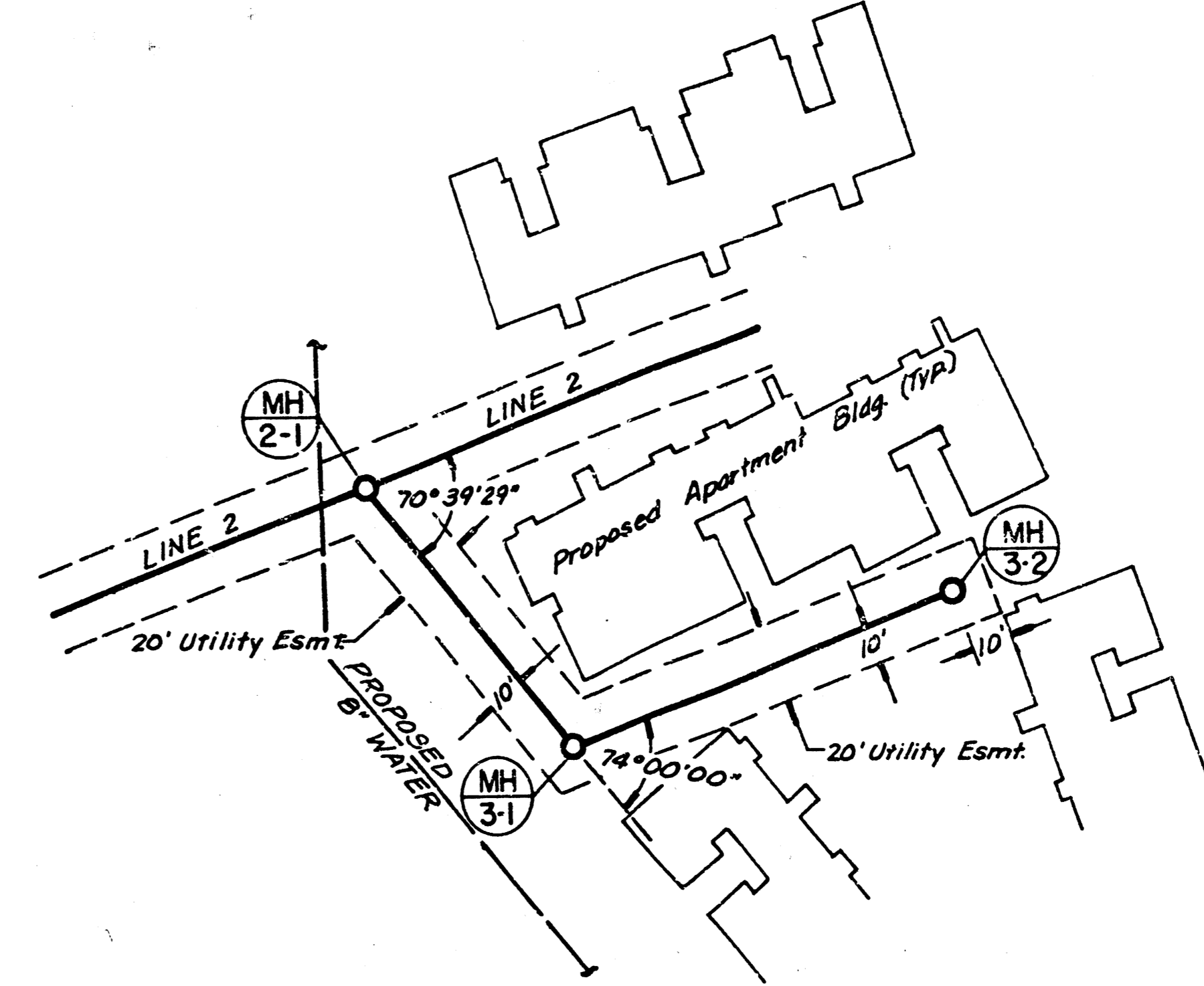


SCALE: 1" = 40' HORIZ.  
 1" = 5' VERT.

INWOOD

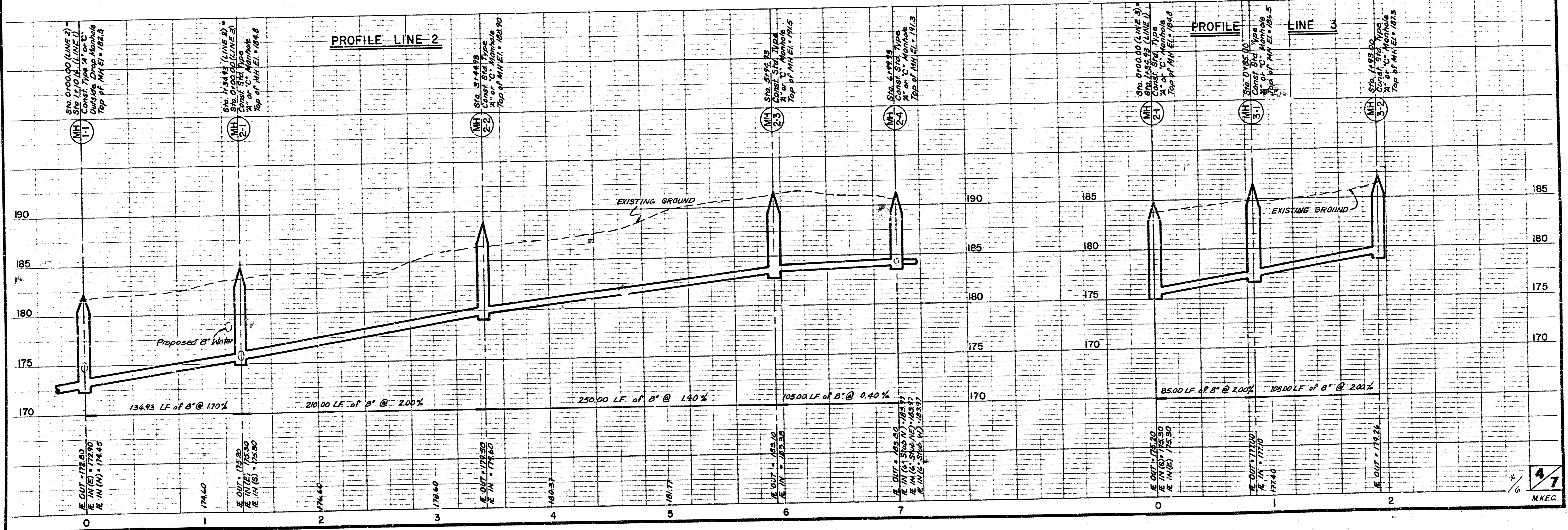


PLAN LINE 2

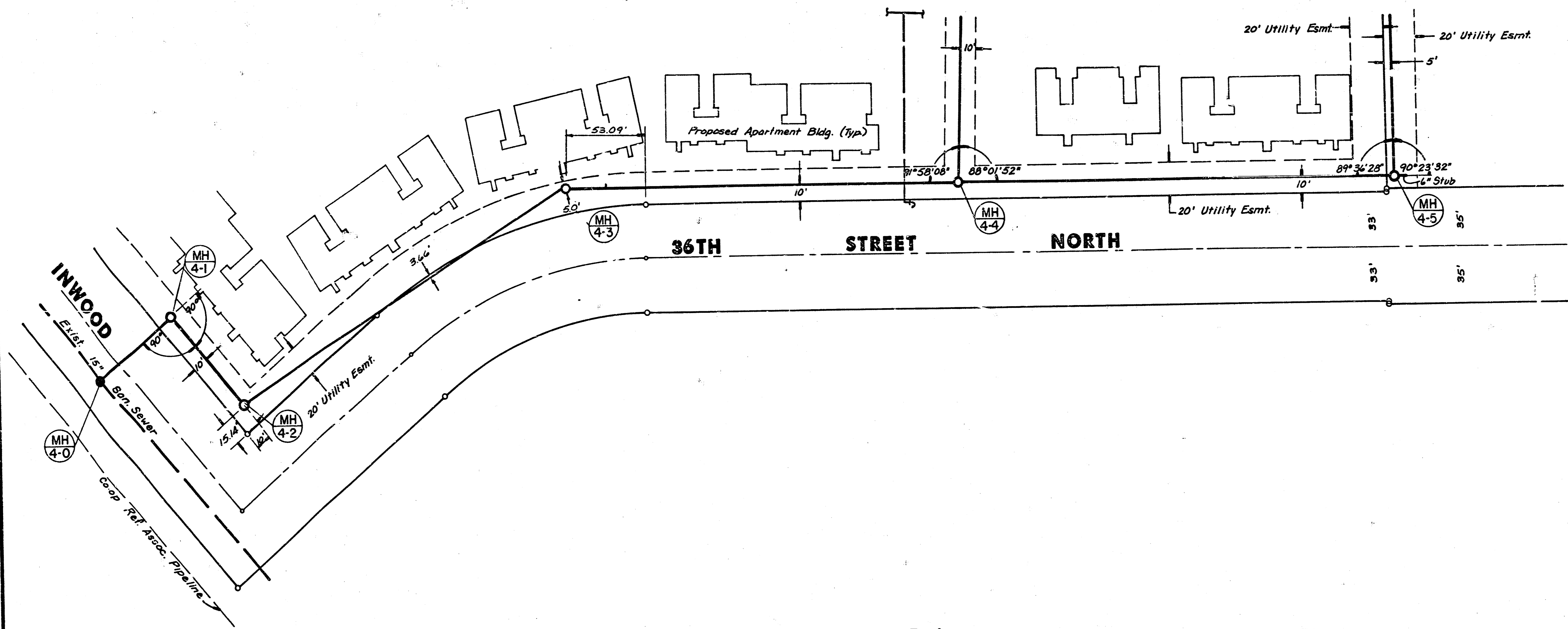


PLAN LINE 3

SCALE: 1" = 40' HORIZ.  
 1" = 5' VERT.

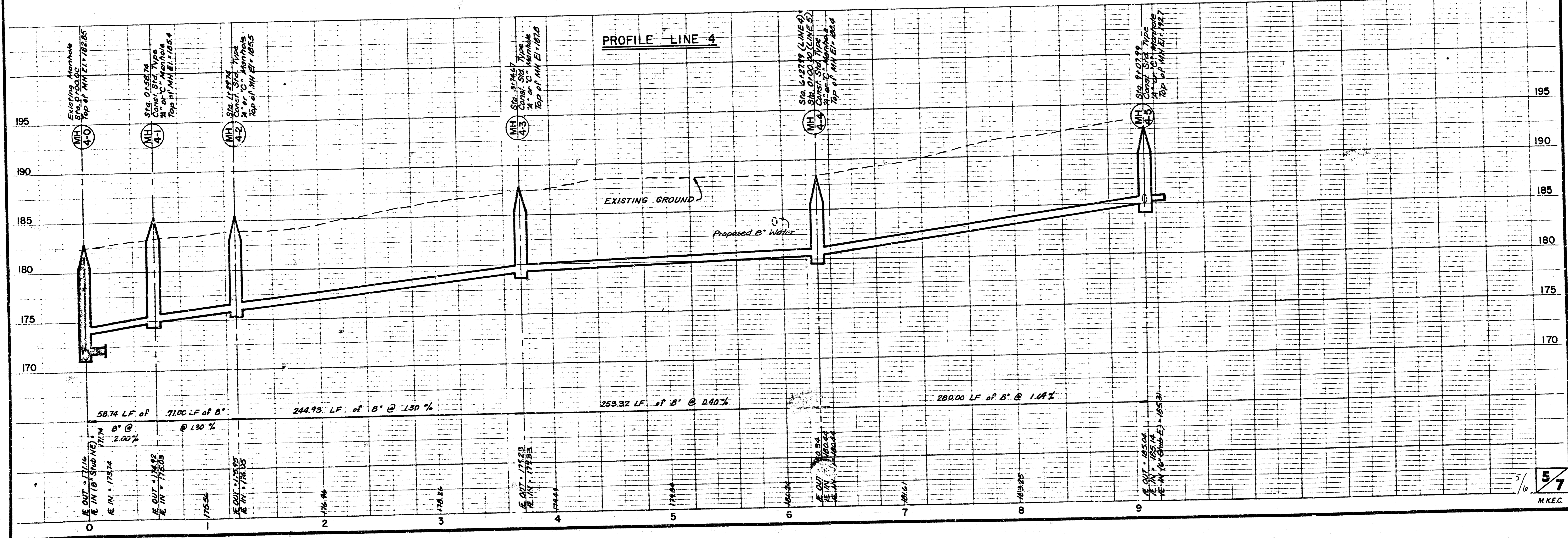


FILMED FROM THE BEST AVAILABLE COPY.....



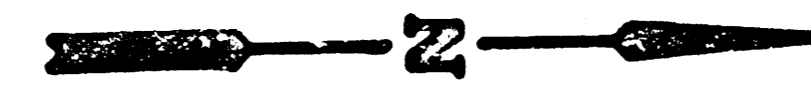
N  
 SCALE: 1" = 40' HORIZ.  
 1" = 5' VERT.

PLAN LINE 4

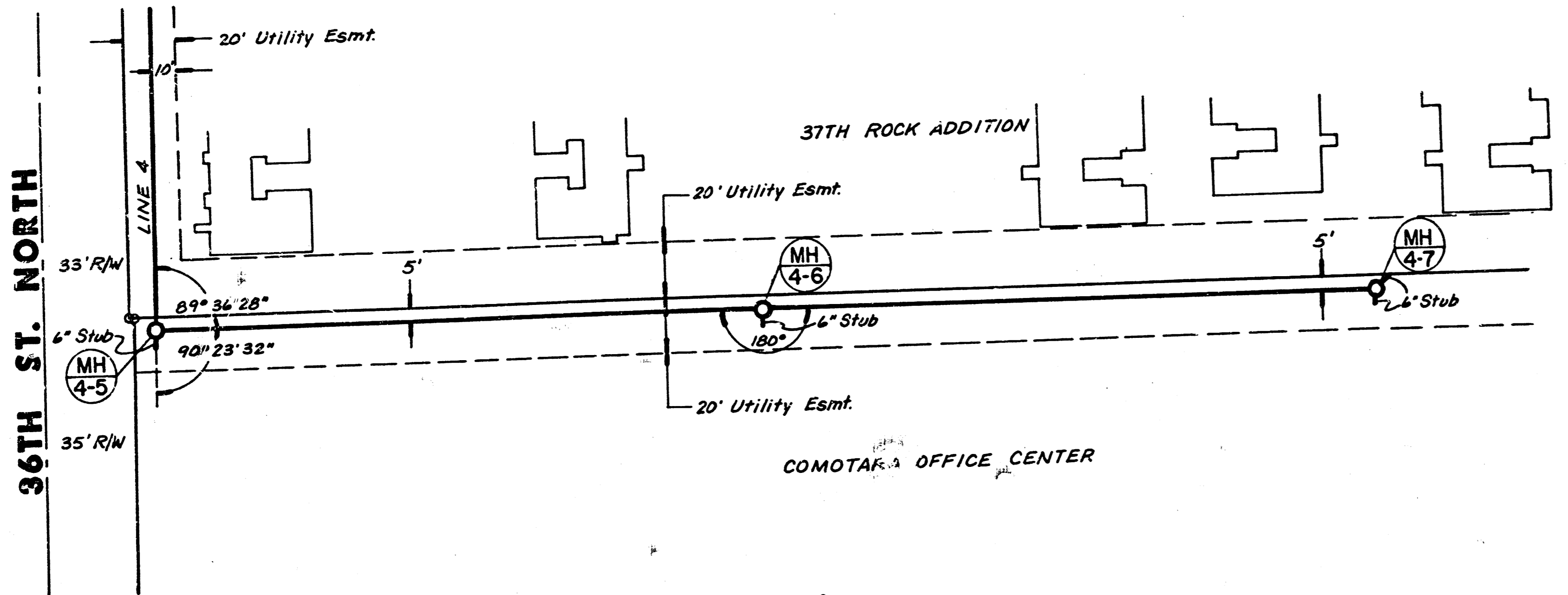


PROFILE LINE 4

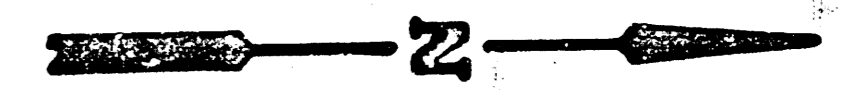
FILMED FROM THE BEST  
 AVAILABLE COPY.....



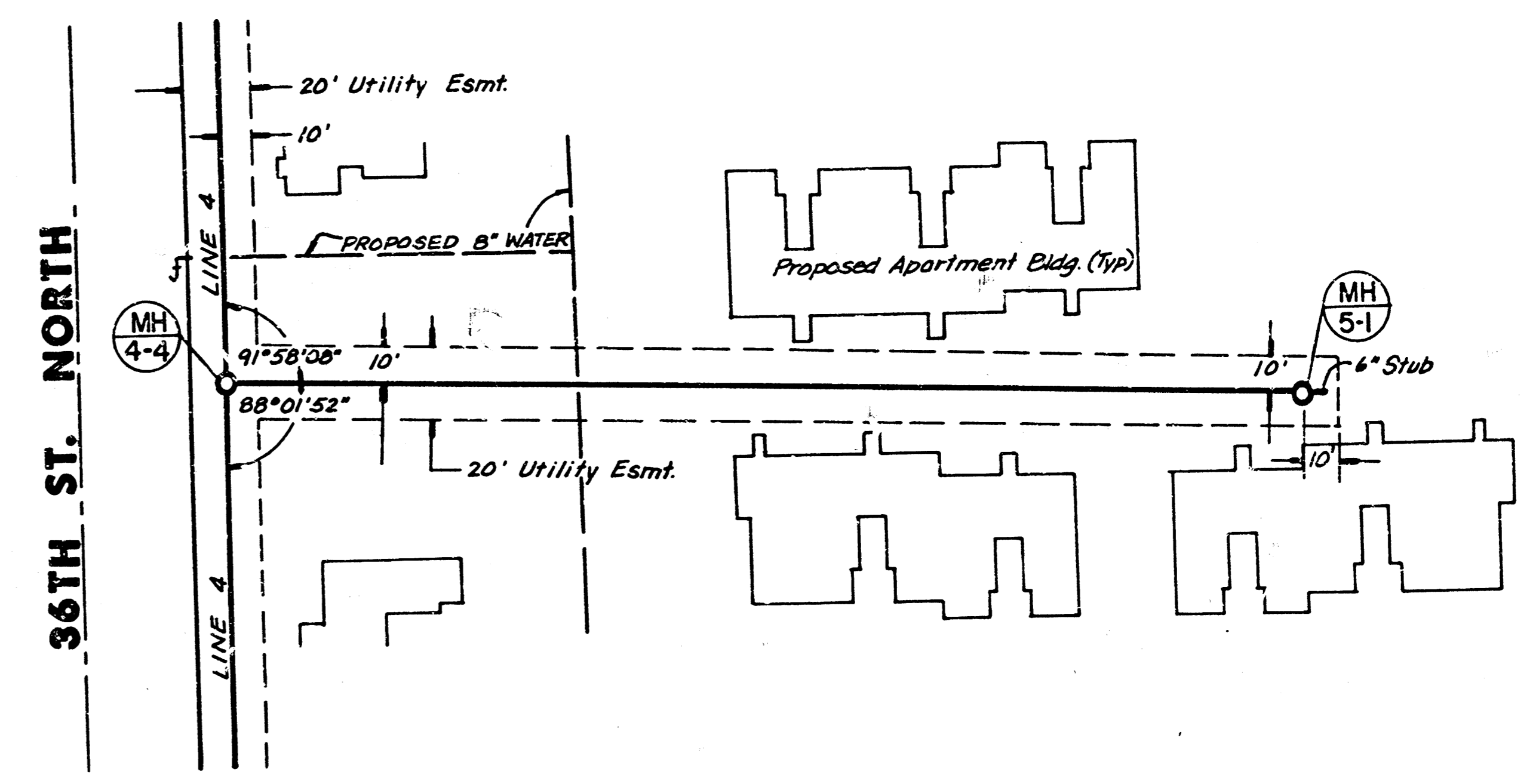
SCALE: 1" = 40' HORIZ.  
 1" = 5' VERT.



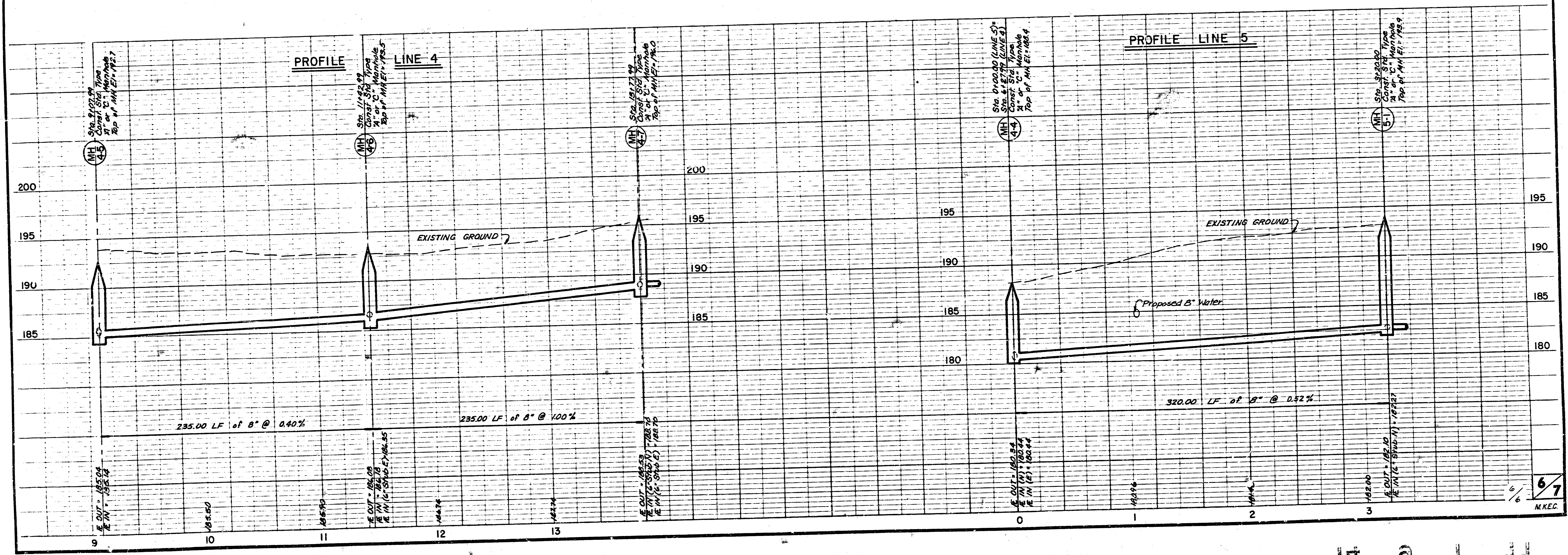
PLAN LINE 4



SCALE: 1" = 40' HORIZ.  
 1" = 5' VERT.



PLAN LINE 5



PROFILE LINE 4

PROFILE LINE 5

FILMED FROM THE BEST AVAILABLE COPY .....