

Note: Utility lines installed after construction begin, not shown on plan. The contractor shall consult with city for location of recent established utility lines.

B.M. 143.23 City Sid N.E. Cor Hillside & Central

Note: Contr shall salvage 2 manhole rims & lids which shall be moved to the City Materials Yard. Exist manholes not being used shall be removed approx. 12\"/>

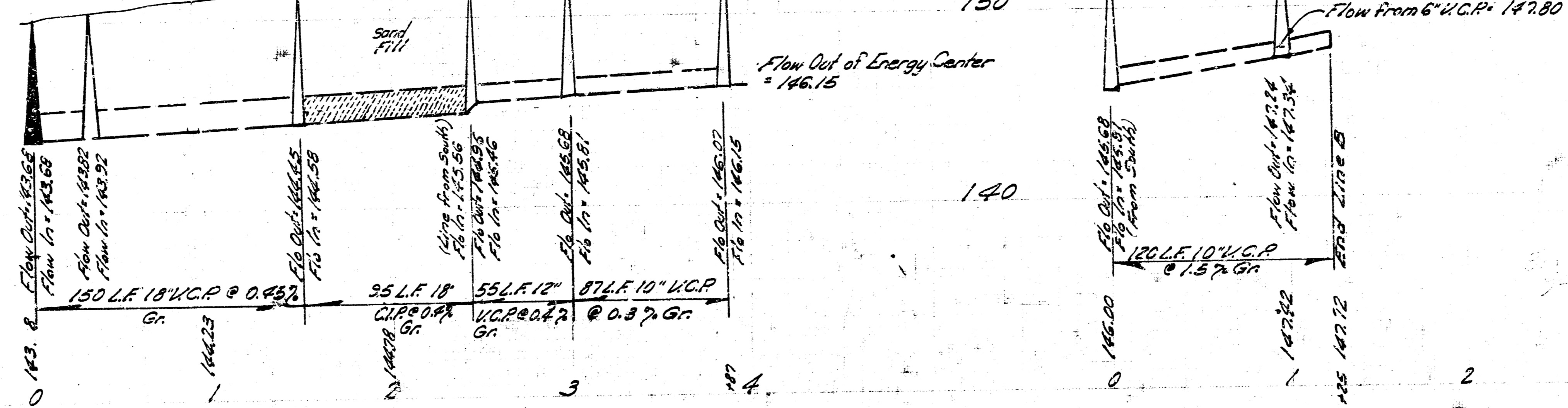
1968  
 This project will be completed under the supervision of the City Engineer with the assistance of the City Engineer's Office. The City Engineer's Office is located at 1001 S. 10th St., Wichita, Kansas 67202.

Scale: 1" = 40' Plan  
 1" = 40' Horiz. Profile  
 1" = 4' Vert. Profile

Sta 0+00 Beg 18" W.C.P. @ Exist M.H. - Line A  
 Sta 0+51 Const 56' M.H. Type 19" - Line A  
 Sta 1+66 Const 56' M.H. Type 19" - Line A  
 Sta 1+50 End 18" W.C.P. @ Beg 18" C.I.P. (Equation)  
 Sta 2+45 End 18" C.I.P. @ Beg 18" W.C.P.  
 Sta 2+45 Const 56' M.H. Type 19" - Line A  
 Sta 3+40 Const 56' M.H. Type 19" - Line A  
 Sta 3+40 Const 18" W.C.P. @ Beg 18" C.I.P. - Line B  
 Sta 3+97 Const 56' M.H. Type 19" - Line A  
 Sta 4+00 Const 18" W.C.P. @ Beg 18" C.I.P. - Line B

Line A: 166 L.F. 18" W.C.P.  
 35 L.F. 18" C.I.P.  
 55 L.F. 12" W.C.P.  
 37 L.F. 10" W.C.P.  
 473 L.F.

Line B: 120 L.F. 10" W.C.P.  
 30 L.F. 6" W.C.P. (Approx.)



SANITARY SEWER RECONSTRUCTION FOR WESLEY HOSPITAL  
 CITY OF WICHITA KANSAS  
 B.E. SMITH CITY ENGINEER  
 1968