

Benchmark:
City disc., 56.2' north & 38' west of
centerlines of Tyler Road & Maple
Elevation = 143.00 City Datum

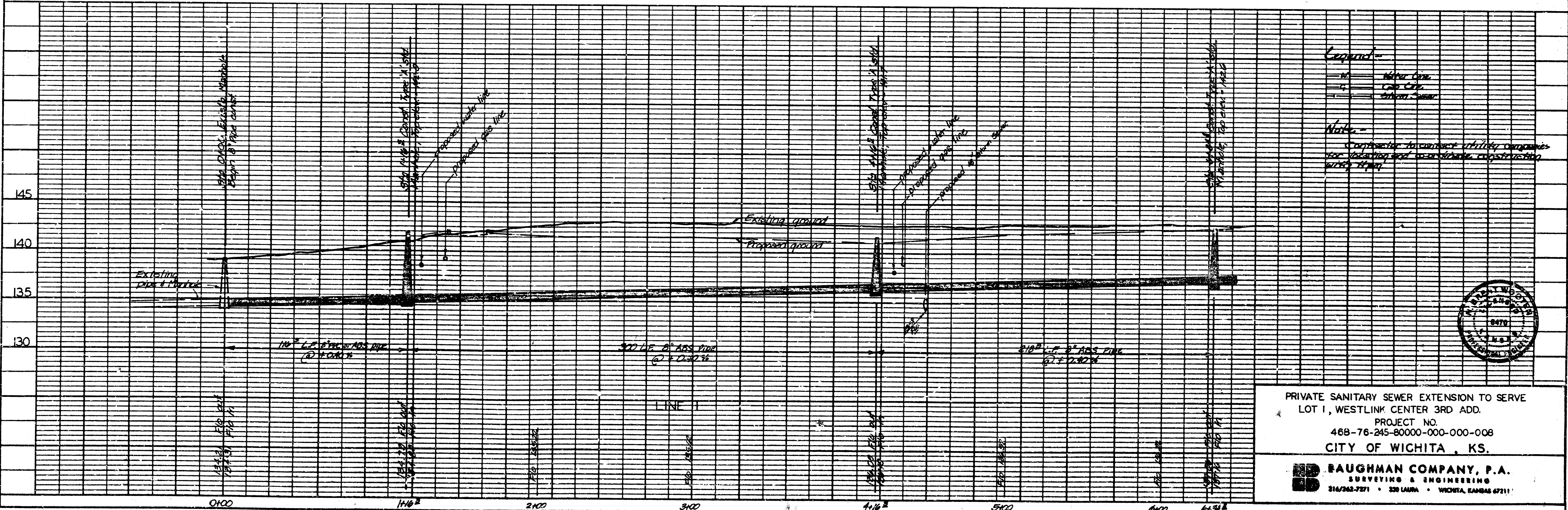
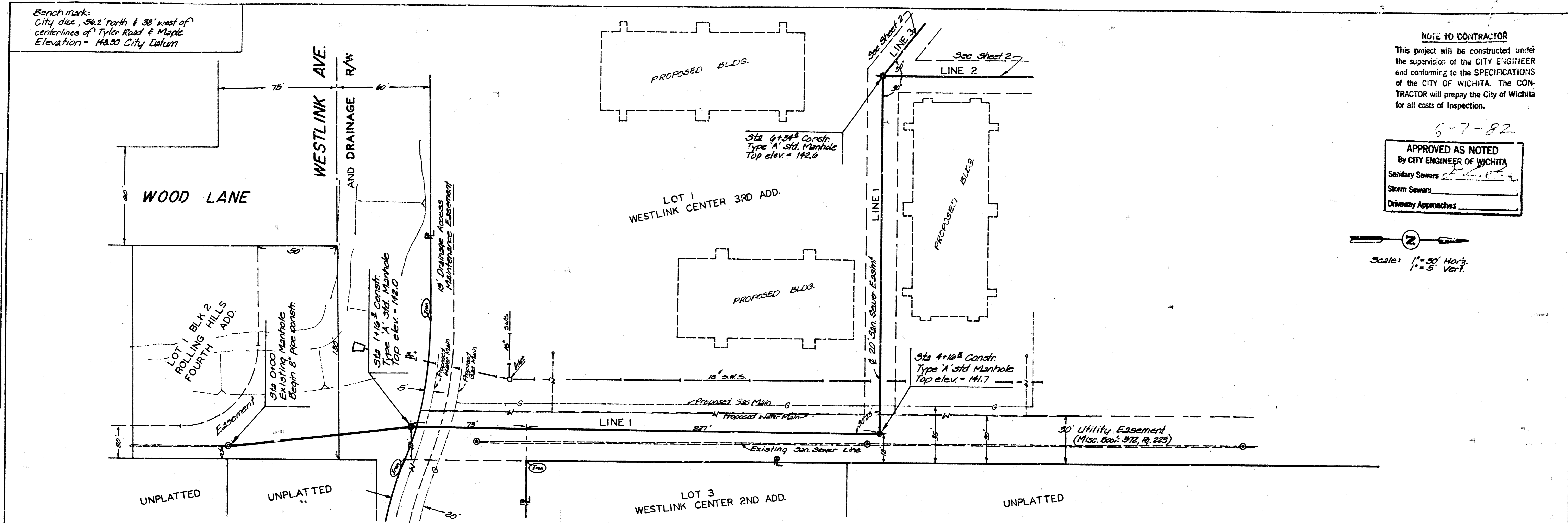
NOTE TO CONTRACTOR
This project will be constructed under the supervision of the CITY ENGINEER and conforming to the SPECIFICATIONS of the CITY OF WICHITA. The CONTRACTOR will prepay the City of Wichita for all costs of Inspection.

6-7-82
APPROVED AS NOTED
By CITY ENGINEER OF WICHITA
Sanitary Sewers
Storm Sewers
Driveway Approaches

Scale: 1" = 30' Horz.
1" = 5' Vert.

PLAN
DRAWN BY: G.S.
CHECKED BY: G.S.
DATE: 6-7-82

PROFILE
DRAWN BY: G.S.
CHECKED BY: G.S.
DATE: 6-7-82



Legend
- - - - - Meter Line
- - - - - Gas Line
- - - - - Storm Sewer

Note
Contractor to contact utility companies for location and to obtain construction utility maps.



PRIVATE SANITARY SEWER EXTENSION TO SERVE
LOT 1, WESTLINK CENTER 3RD ADD.
PROJECT NO.
468-76-245-80000-000-008
CITY OF WICHITA, KS.

BAUGHMAN COMPANY, P.A.
SURVEYING & ENGINEERING
316/263-7271 • 329 LAUREL • WICHITA, KANSAS 67211

PLAN
 DATE: 7/25
 BY: [Signature]
 CHECKED: [Signature]
 NO. 10000-1

PROFILE
 DATE: 7/25
 BY: [Signature]
 CHECKED: [Signature]
 NO. 10000-1

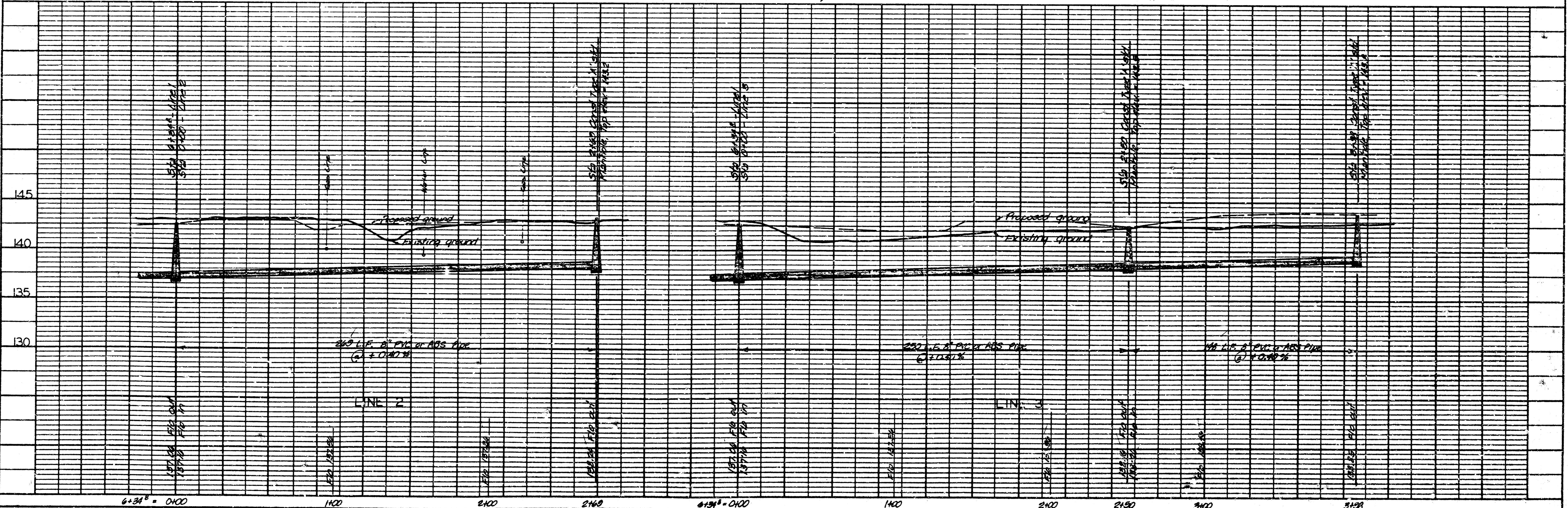
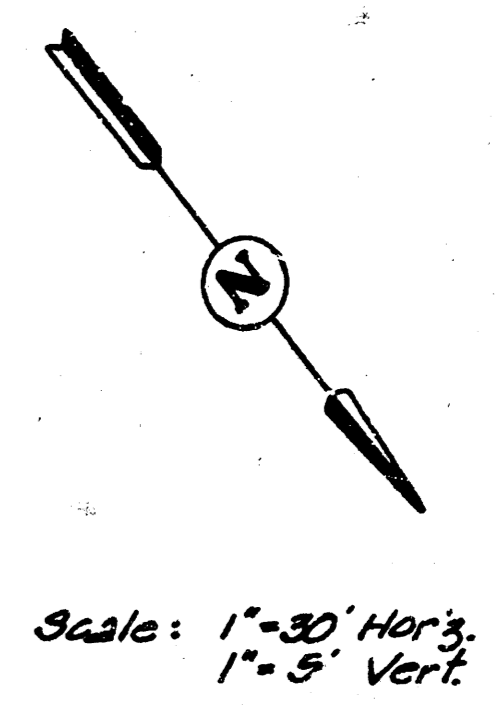
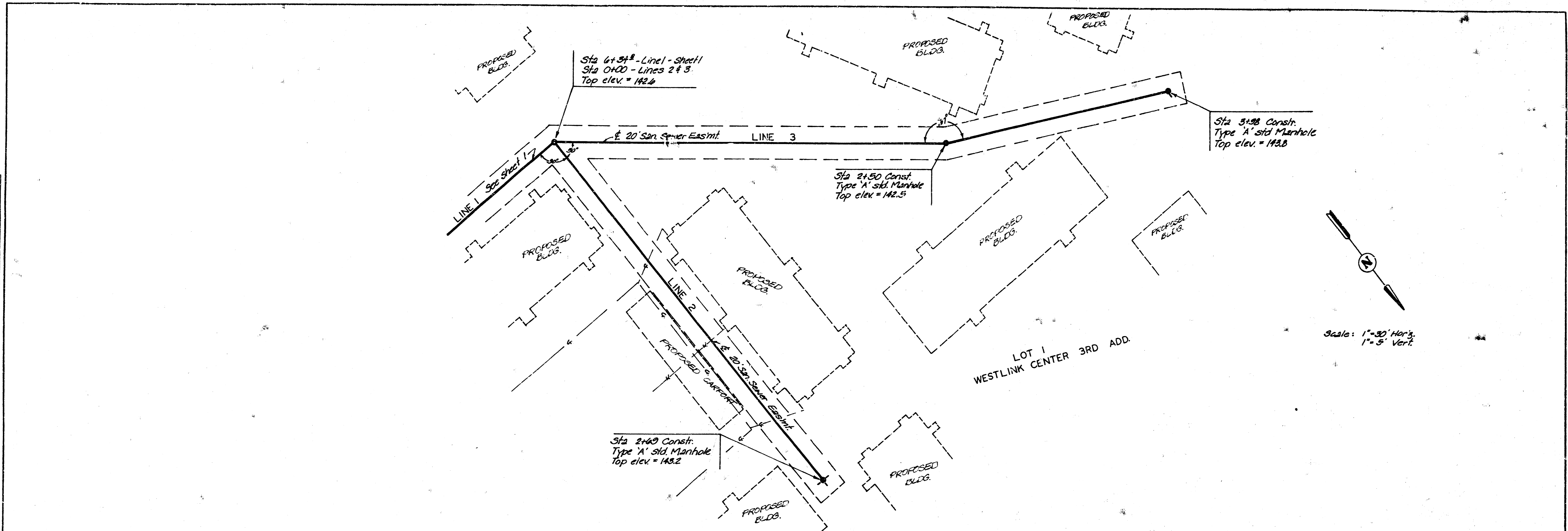


PLATE 1 - PLAN - PROFILE - F.A.S.
 CLEARPRINT PAPER CO., S.F. CAL.
 NO. 10000-1

FILMED FROM THE BEST