

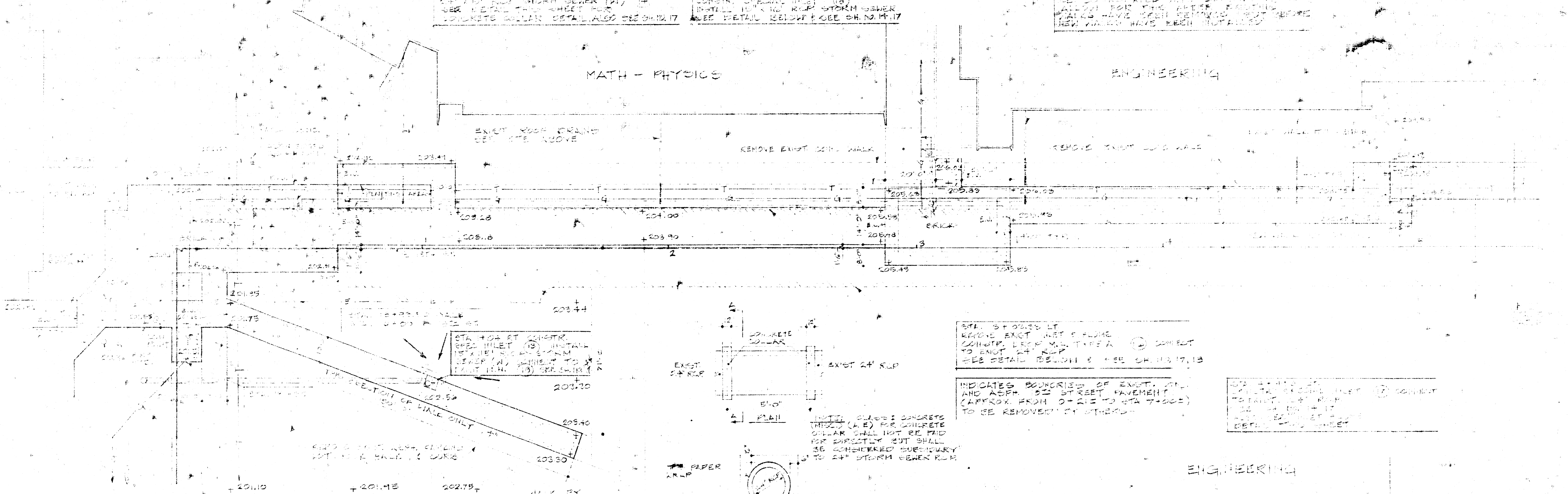
REMOVE EXIST. 18" R.C.P. MANHOLE & CATCH BASIN (17) & RECONSTRUCT WITH 24" R.C.P. MANHOLE & CATCH BASIN. SEE DETAIL BELOW PAGE SHEET 14-17.

REMOVE EXIST. 18" R.C.P. MANHOLE & CATCH BASIN (18) & RECONSTRUCT WITH 24" R.C.P. MANHOLE & CATCH BASIN. SEE DETAIL BELOW PAGE SHEET 14-17.

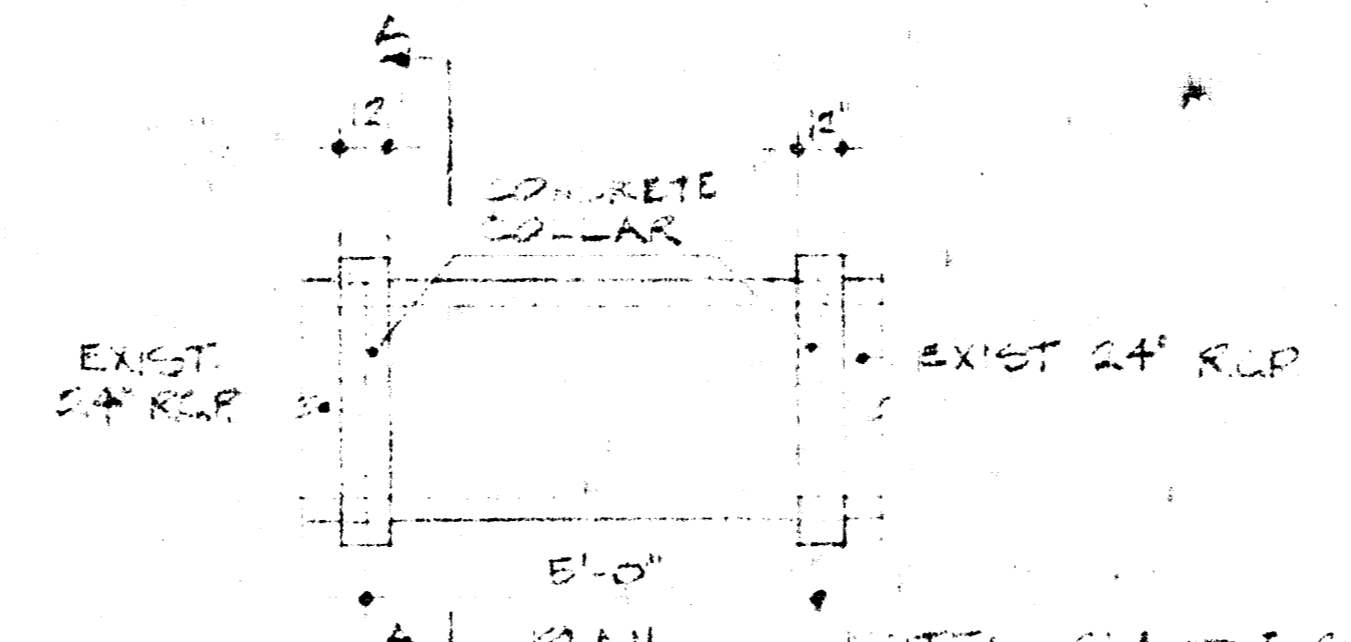
REMOVE EXIST. 18" R.C.P. MANHOLE & CATCH BASIN (19) & RECONSTRUCT WITH 24" R.C.P. MANHOLE & CATCH BASIN. SEE DETAIL BELOW PAGE SHEET 14-17.

MATH - PHYSICS

ENGINEERING



STA. 4+04.87 CONCR. COLLAR INLET (18) INSTALL NEW 24\"/>

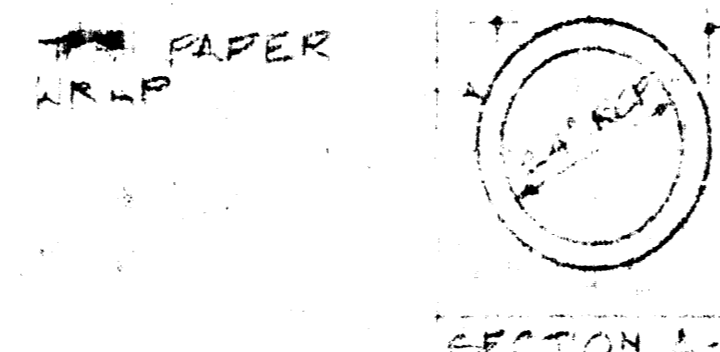


STA. 5+00.00 LT. REMOVE EXIST. 18\"/>

INDICATES BOUNDARIES OF EXIST. 18\"/>

STA. 4+04.87 CONCR. COLLAR INLET (18) CONNECT TO EXIST. 24\"/>

NOTE: ALL 2\"/>

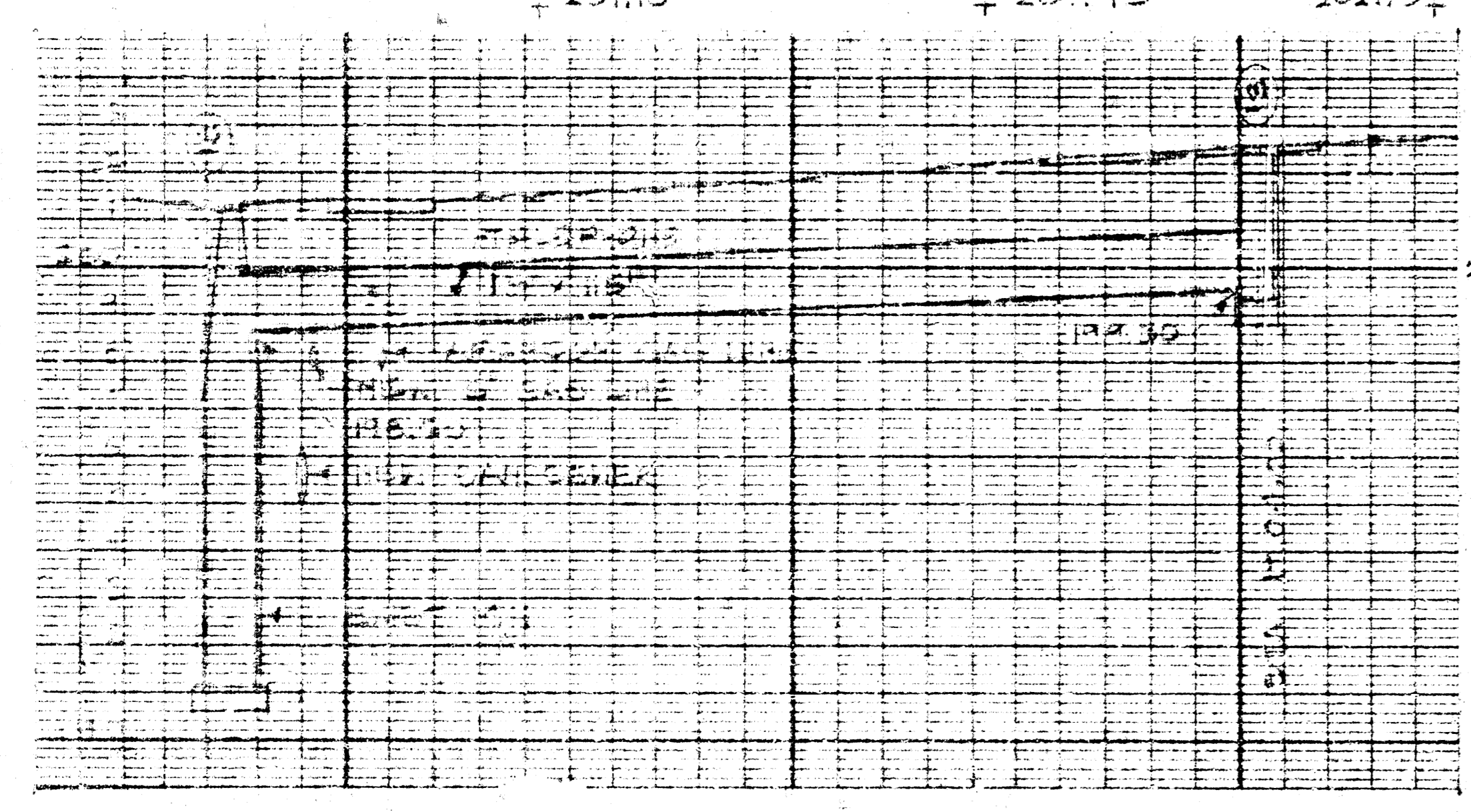


SECTION A-A
CONCRETE COLLAR DETAIL
STA. 0+47.33 LT. N.G.

18th STREET IMPROVEMENTS
IN 2010

- NOTES:
1. ALL WALKS EXCEPT AS NOTED TO BE 6\"/>
 2. FOR ALL BRICK PANELS IN SIDEWALK SEE DETAIL ON SHEET 13.
 3. FOR ALL UTILITIES SEE GENERAL NOTES ON SHEET 5.

STA. 5+15.00 MATCH ABOVE

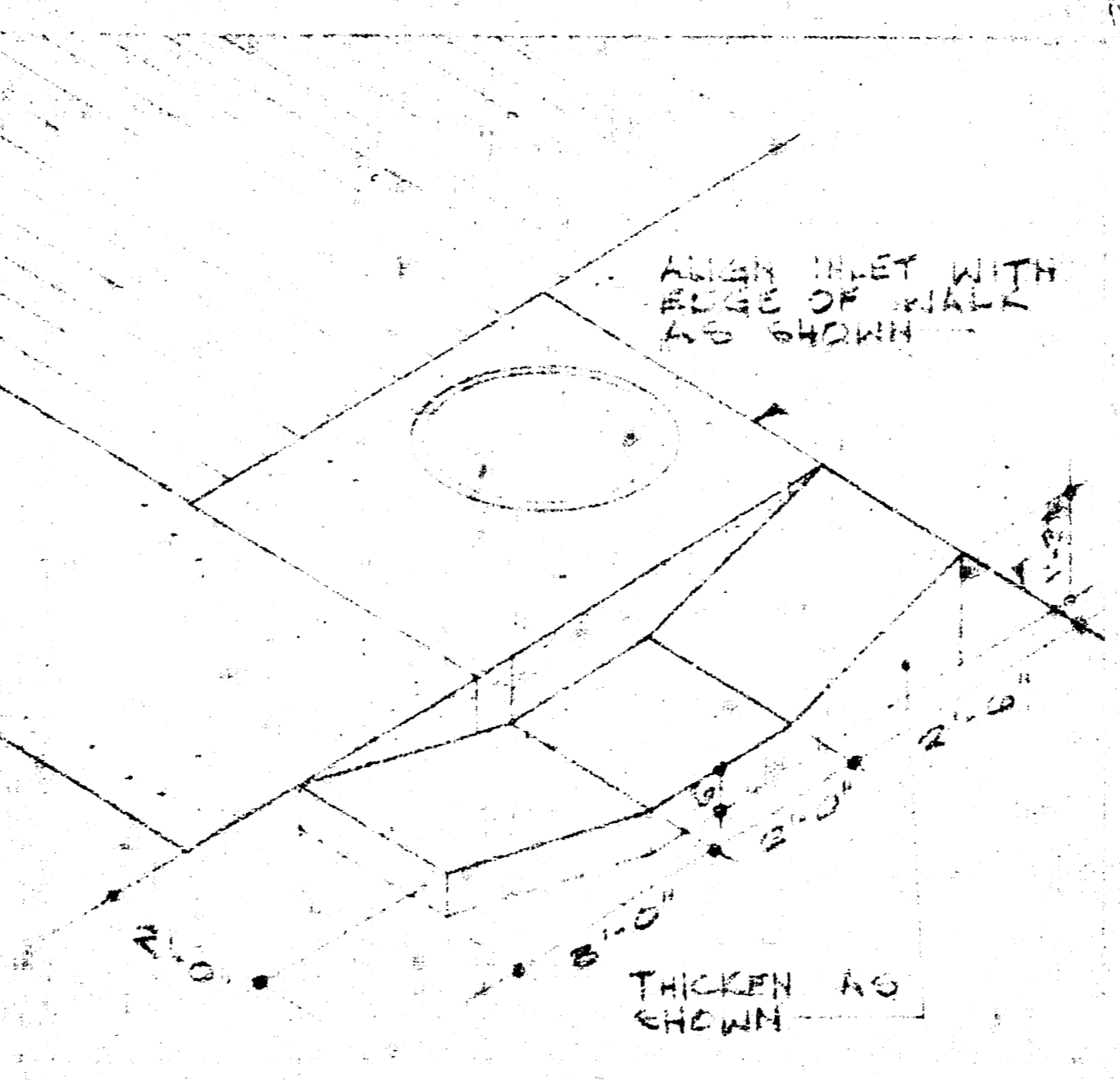


PROFILE 15 R.C.P.

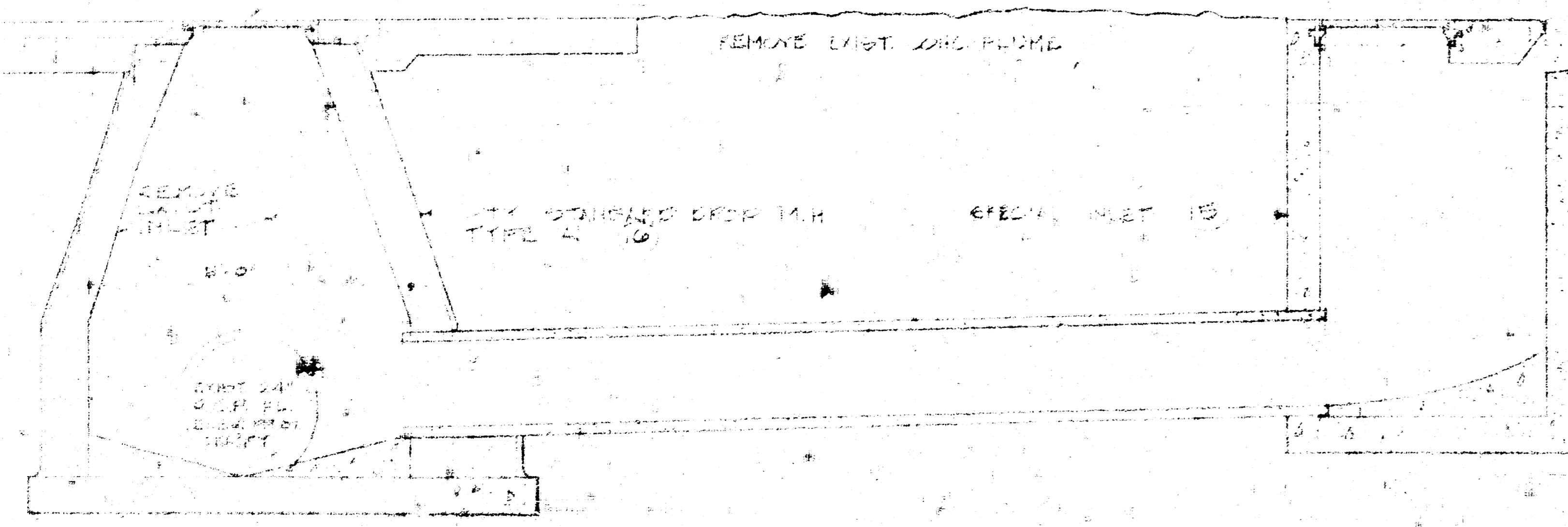
THIS PORTION OF EXIST. ASPH. LOT TO BE REMOVED BY OTHERS.

CONSTRUCT NEW FLUME WALL ALONG WEST SIDE TO MATCH THAT OF EXIST. INLET (17).

ADJUST THICKNESS AS REQUIRED TO MATCH EXIST. FLUME



SPEC. INLET (17) FLUME DETAIL N.G.
FOR SPECIAL INLET (17) STA. 4+41.33 LT.



MANHOLE & CATCH BASIN DET. @ STA. 3+3.83

KEY FOR THIS SHEET ONLY:

ELEC.	2	TELE.	1	GAS	4
NEW ELEV.	100.00				
EXIST. ELEV.	500.00				
REMOVED PAVEMENT, WALKS, ETC.	---				
NEW WALKS	---				
EXIST. WALKS OR AS NOTED	---				
NEW DRIVE	---				
EXIST. SEWER	---				
NEW SEWER	---				
E.U. EXPANSION JOINT	---				

18th STREET IMPROVEMENT
WICHITA STATE UNIVERSITY
WICHITA, KANSAS