

SITE IMPROVEMENTS FOR WILLOWOOD MOBILE HOME PARK

INCLUDING:

- ~~SITE UTILITY PLAN~~
- ~~SITE GRADING PLAN~~
- ~~ASPHALT PAVING PLANS~~
- SANITARY SEWER EXTENSIONS
- ~~WATER LINE EXTENSIONS~~
- INDEX 211 PPS 607853**

APPROVED AS NOTED

By CITY ENGINEER OF WICHITA

Sanitary Sewers *Done 4/26/87*

Storm Sewers _____

Driveway Approaches _____

Water Mains _____

Paving _____

NOTE TO CONTRACTOR

INSPECTION AND TESTING FOR THIS PROJECT IS TO BE PROVIDED BY A LICENSED CONSULTING ENGINEERING FIRM UNDER CONTRACT WITH THE OWNER/DEVELOPER. SAID INSPECTION TO BE IN ACCORDANCE WITH THE CITY OF WICHITA STANDARD CONSTRUCTION ENGINEERING PRACTICES AND CERTIFIED BY A LICENSED PROFESSIONAL ENGINEER. NO WORK SHALL BE PERFORMED IN DEDICATED EASEMENTS OR THE PUBLIC RIGHT-OF-WAY BY THE CONTRACTOR WITHOUT SUCH INSPECTION. NO WORK SHALL ANY WORK BE COMMENCED IN DEDICATED EASEMENTS OR PUBLIC RIGHT-OF-WAY WITHOUT WRITTEN AUTHORIZATION FROM THE CITY ENGINEER.

GENERAL NOTES

Contractor shall use caution when working in the Hydraulic right-of-way area. The construction work in this area shall be sufficiently signed and barricaded at all times throughout the site for appropriate traffic movement during the construction phase. Traffic is to be maintained in both directions on Hydraulic Ave. unless directed otherwise.

The Contractor shall contact all necessary utility companies a minimum of 24 hours prior to starting any construction or excavation work as follows:

Kansas One-Call 1-800-344-7233

The Contractor must notify the following in case of an emergency:

Cablevision	262-2470 or 263-2061
K.P. & L. Gas Service Company	263-7511
Kansas Gas & Electric	264-1161
Arkla Gas Company	842-8359 or 263-8161
Southwest Bell Telephone Company	1-571-2611
City of Wichita Water Department	268-4908
City of Wichita Sewer Maintenance	268-4071

The Contractor shall be responsible for providing sufficient construction staking for all phases of the project.

The project shall meet standard City of Wichita specifications for the sanitary sewers, water lines, and the pavement construction and materials.

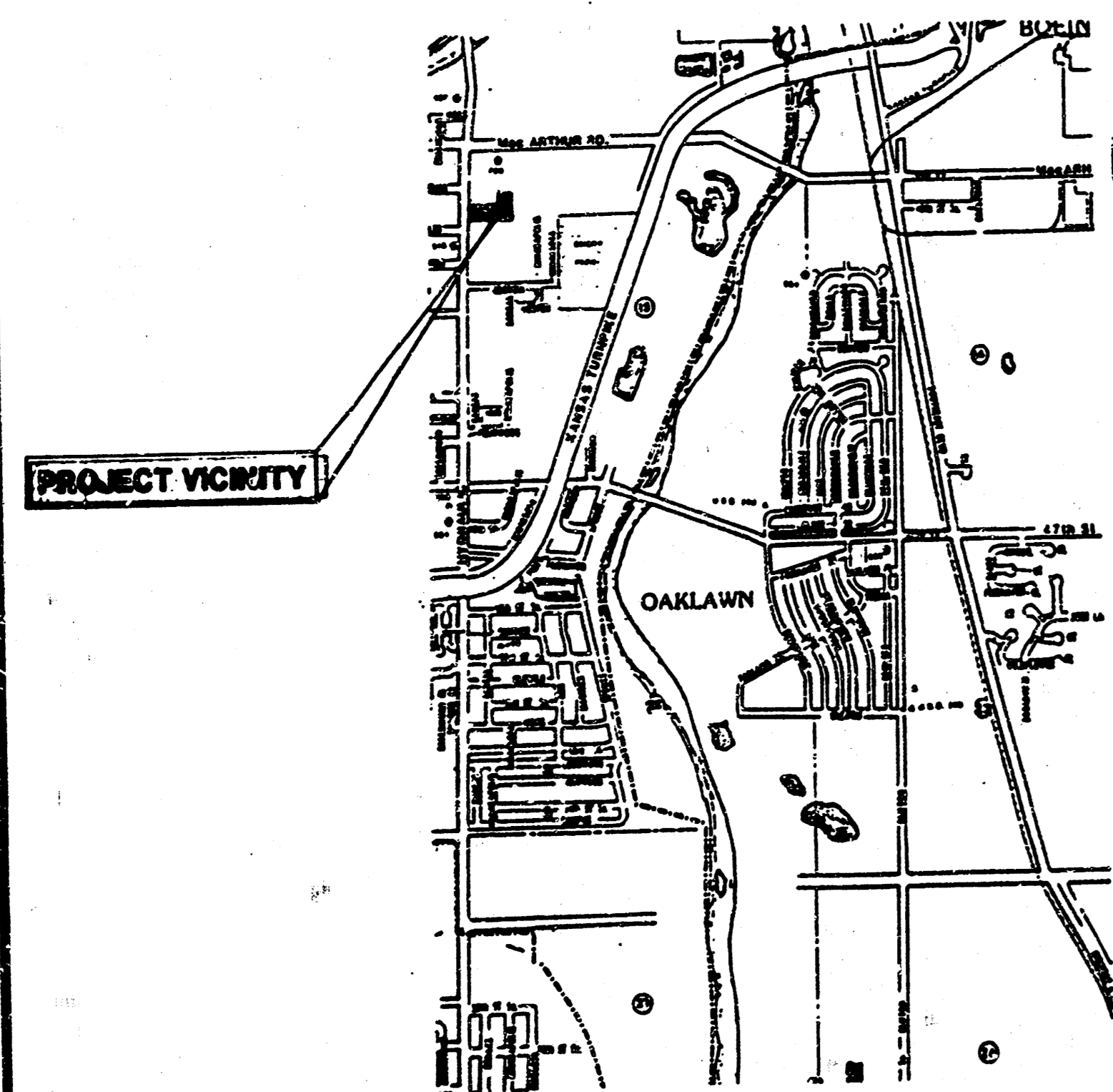
The Contractor shall not dump, deposit, or store any earthwork excavation onto adjacent properties or within street right-of-way without permission from those adjacent owners. The Contractor shall also not grade either temporarily or otherwise any drainage onto adjacent properties.

The Contractor shall advise the Owner of tree and shrub removal on the project and only perform this where it is necessary or where it is directed by the Owner.

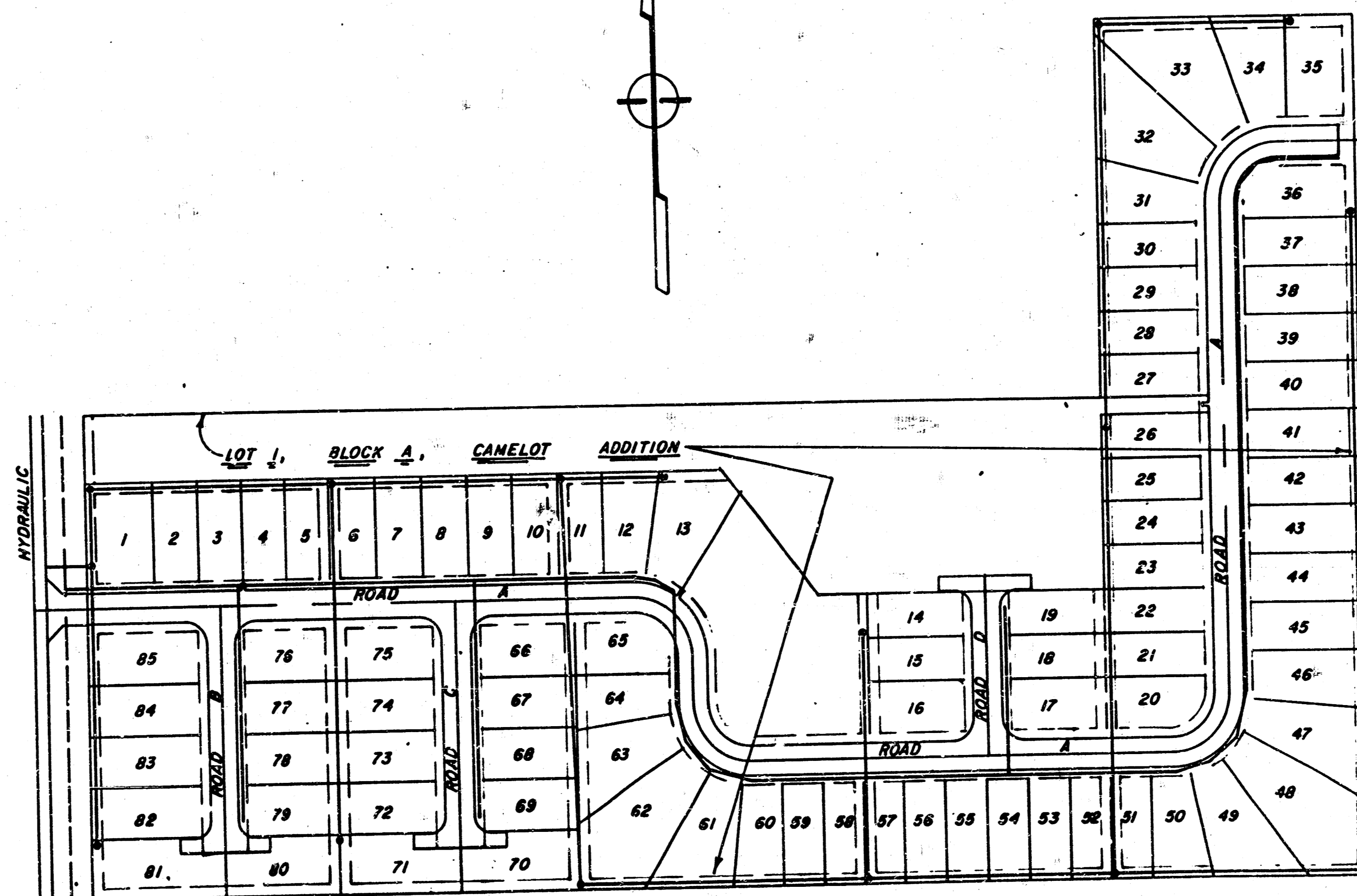
The Contractor shall remove completely from the site any excess earthwork excavation materials, trees or shrubs, construction materials, and any other debris in order to leave the project site in a good clean condition.

INDEX TO PLANS

- 1 Title Sheet
- 2 Site Utility Plan
- 3 Site Grading Plan
- 4 Road A Paving Plan
- 5 Road A Paving Plan
- 6 Road B, C, and D Paving Plans
- 7 20' Pavement Typical Section
- 8 Intersection Details
- 9-2 Sanitary Sewer Plan, Lines 1-6
- 10-3 Sanitary Sewer Profile, Line 1
- 11-4 Sanitary Sewer Profiles, Lines 2-6
- 12 Standard Type 'P' Manhole Detail
- 13-5 Shallow Type 'P' Manhole Detail
- 14 Water Line Plan, Lines 1-4
- 15 Water Line Plan, Line 1
- 16 Standard Water Assembly Detail

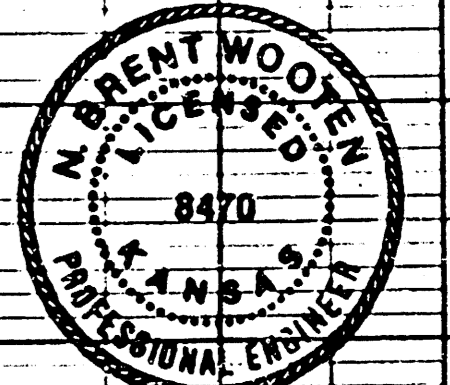
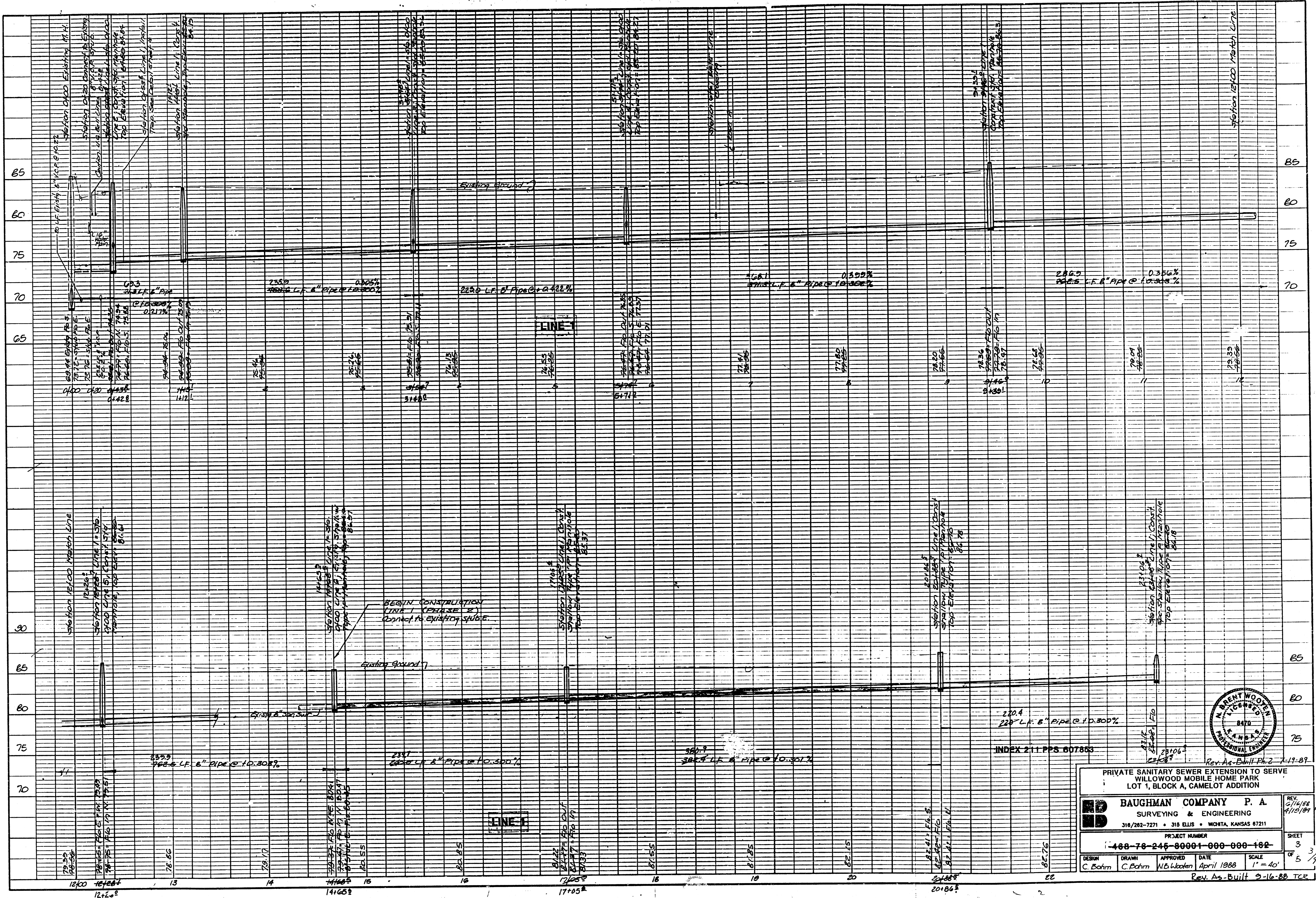


LOCATION MAP



Phase 2
Rev. Rev 4/16/89
SS. Rev 4/19/89
140 Rev 4/20/89

Rev. as-built Pk. 2 7/1/89
SS. Rev 6/16/88



INDEX 211 PPS 607803

Rev. As-Built Ph. 2 7-17-89

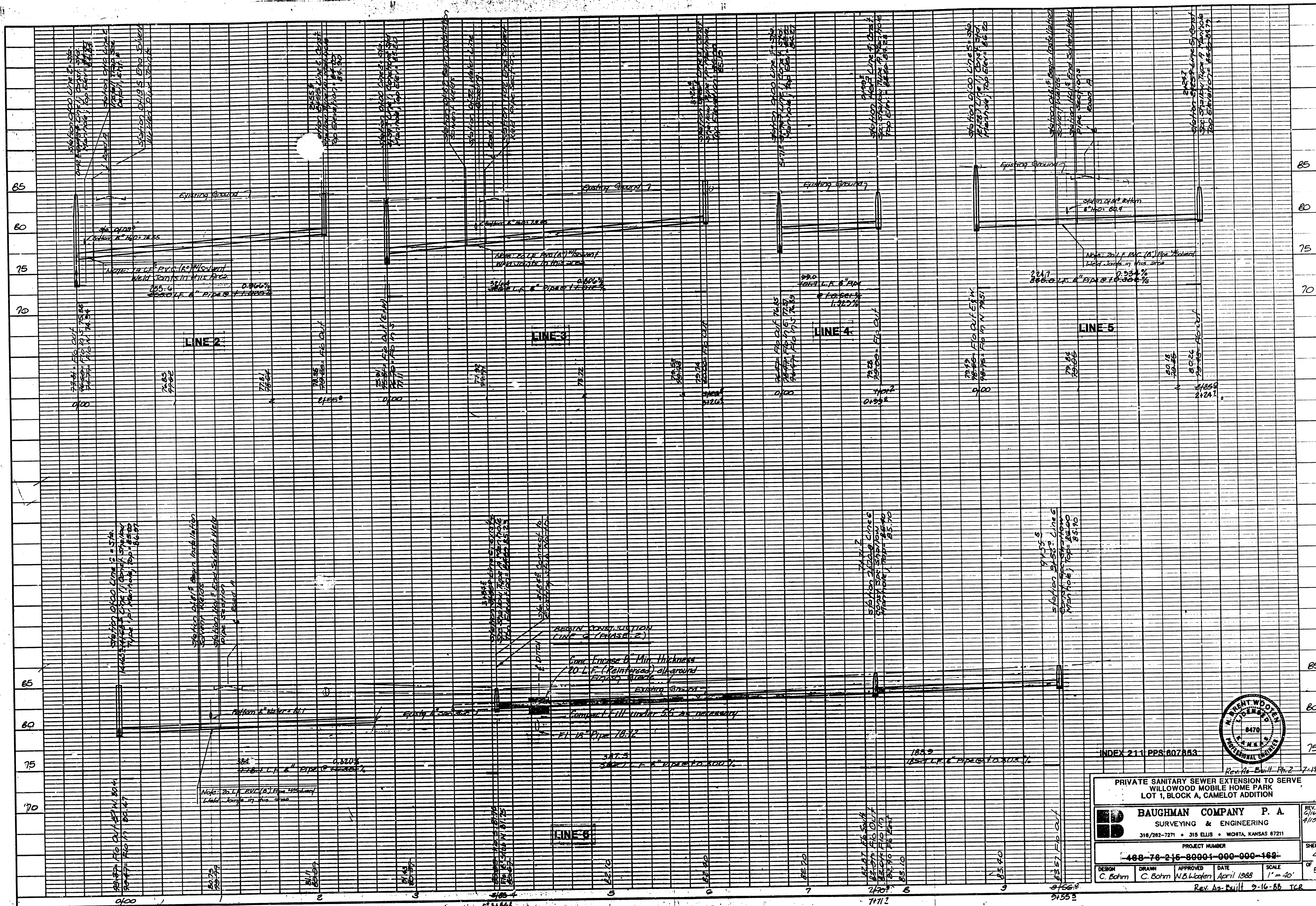
PRIVATE SEWER EXTENSION TO SERVE
WILLOWOOD MOBILE HOME PARK
LOT 1, BLOCK A, CAMELOT ADDITION

BAUGHMAN COMPANY P. A.
SURVEYING & ENGINEERING
318/282-7271 • 315 ELLIS • WICHITA, KANSAS 67211

PROJECT NUMBER
488-78-246-80001-000-000-102

DESIGN: C. Bohm DRAWN: C. Bohm APPROVED: W.B. Wooden DATE: April 1988 SCALE: 1" = 40'
SHEET 3 OF 5 3/4
Rev. As-Built 9-16-88 TCR

FILMED FROM THE BEST AVAILABLE COPY



INDEX 211 PPS 607853

Rev. As-Built Pt. 2 7-19-89

PRIVATE SANITARY SEWER EXTENSION TO SERVE
WILLOW MOBILE HOME PARK
LOT 1, BLOCK A, CAMELOT ADDITION

BAUGHMAN COMPANY P. A.
SURVEYING & ENGINEERING
318/262-7271 • 315 ELLIS • WORTH, KANSAS 67211

PROJECT NUMBER
488-78-215-80001-000-000-162

DESIGN C. Bohm	DRAWN C. Bohm	APPROVED W.B. Wofen	DATE April 1988	SCALE 1" = 40'
-------------------	------------------	------------------------	--------------------	-------------------

Rev. As-Built 2-16-88 TCR

REV 01/14/88
4/13/89 (Pt. 2)

SHEET
4
OF 5 4/9

FILMED FROM THE BEST AVAILABLE COPY....

APPROVED AS NOTED

By CITY ENGINEER, OF WICHITA

Sanitary Sewers Ryan 4/11/89

Storm Sewers _____

Driveway Approaches _____

Water Mains _____

Paving _____

SITE IMPROVEMENTS FOR WILLOWOOD MOBILE HOME PARK

INCLUDING:

- ~~SITE UTILITY PLAN~~
- ~~SITE GRADING PLAN~~
- ~~ASPHALT PAVING PLANS~~
- SANITARY SEWER EXTENSIONS
- ~~WATER LINE EXTENSIONS~~
- INDEX 211 PPS 607853**

NOTE TO CONTRACTOR

INSPECTION AND TESTING FOR THIS PROJECT IS TO BE PROVIDED BY A LICENSED CONSULTING ENGINEERING FIRM UNDER CONTRACT WITH THE OWNER/DEVELOPER. SAID INSPECTION TO BE IN ACCORDANCE WITH THE CITY OF WICHITA STANDARD CONSTRUCTION ENGINEERING PRACTICES AND CERTIFIED BY A LICENSED PROFESSIONAL ENGINEER. NO WORK SHALL BE PERFORMED IN DEDICATED EASEMENTS OR THE PUBLIC RIGHT-OF-WAY BY THE CONTRACTOR WITHOUT SUCH INSPECTION NOR SHALL ANY WORK BE COMMENCED IN DEDICATED EASEMENTS OR PUBLIC RIGHT-OF-WAY WITHOUT WRITTEN AUTHORIZATION OF THE CITY ENGINEER.

INDEX TO PLANS

- 1 Title Sheet
- 2 Site Utility Plan
- 3 Site Grading Plan
- 4 Road A Paving Plan
- 5 Road A Paving Plan
- 6 Road B, C, and D Paving Plans
- 7 29' Pavement Typical Section
- 8 Intersection Details
- 9-2 Sanitary Sewer Plan, Lines 1-6
- 10-3 Sanitary Sewer Profile, Line 1
- 11-4 Sanitary Sewer Profiles, Lines 2-6
- 12 Standard Type 'P' Manhole Detail
- 13-5 Shallow Type 'P' Manhole Detail
- 14 Water Line Plan, Lines 1-4
- 15 Water Line Plan, Line 1
- 16 Standard Water Assembly Detail

GENERAL NOTES

Contractor shall use caution when working in the Hydraulic right-of-way area. The construction work in this area shall be sufficiently signed and barricaded at all times throughout the site for appropriate traffic movement during the construction phase. Traffic is to be maintained in both directions on Hydraulic Ave. unless directed otherwise.

The Contractor shall contact all necessary utility companies a minimum of 24 hours prior to starting any construction or excavation work as follows:

Kansas One-Call 1-800-344-7233

The Contractor must notify the following in case of an emergency:

- | | |
|-----------------------------------|----------------------|
| Cablevision | 262-2470 or 263-2961 |
| K.P. & L. Gas Service Company | 263-7511 |
| Kansas Gas & Electric | 264-1141 |
| Arkla Gas Company | 942-8350 or 263-8161 |
| Southwest Bell Telephone Company | 1-571-2611 |
| City of Wichita Water Department | 268-4908 |
| City of Wichita Sewer Maintenance | 268-4671 |

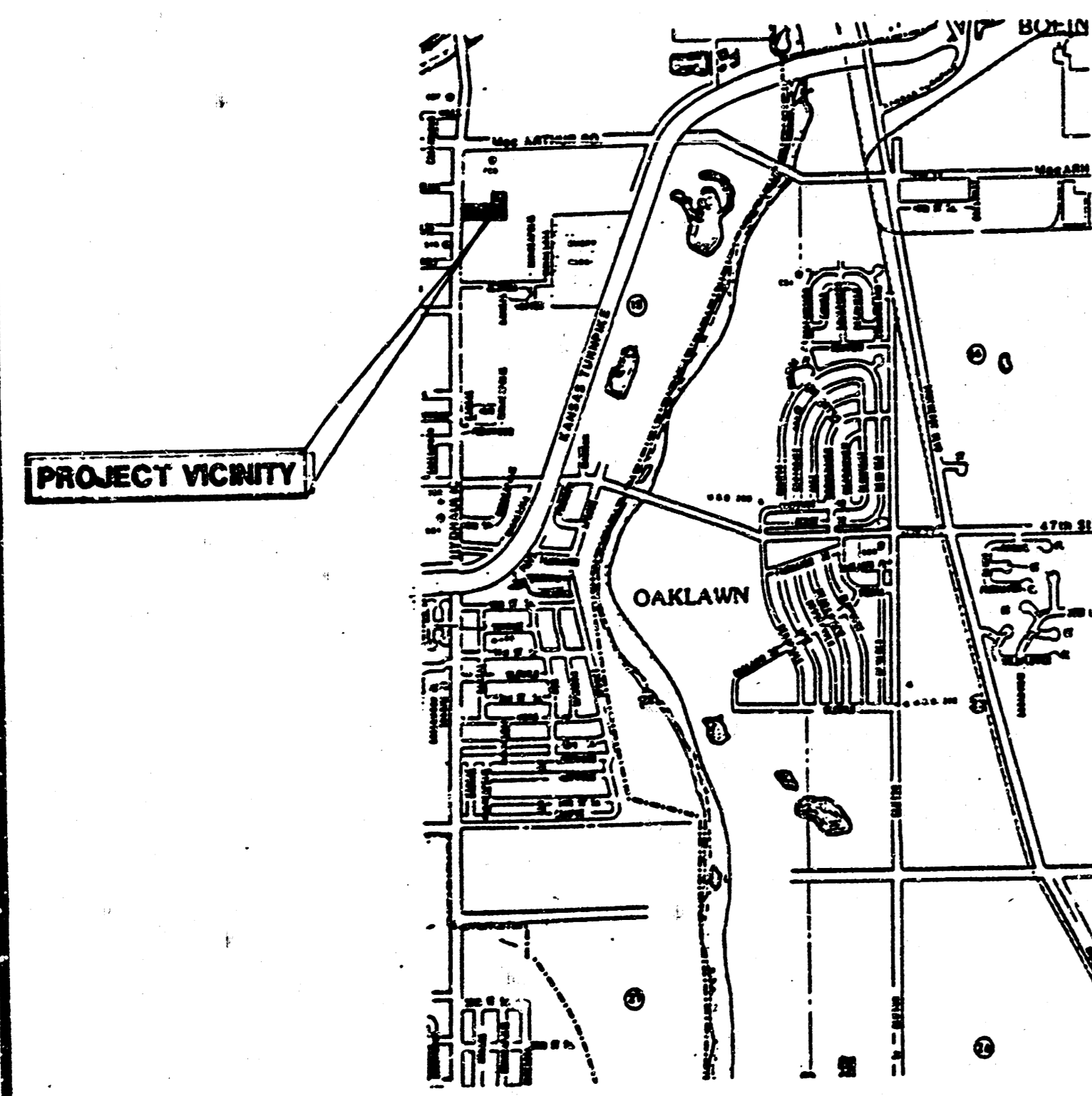
The Contractor shall be responsible for providing sufficient construction staking for all phases of the project.

The project shall meet standard City of Wichita specifications for the sanitary sewers, water lines, and the pavement construction and materials.

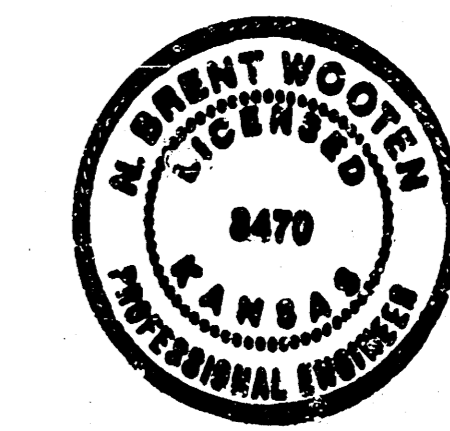
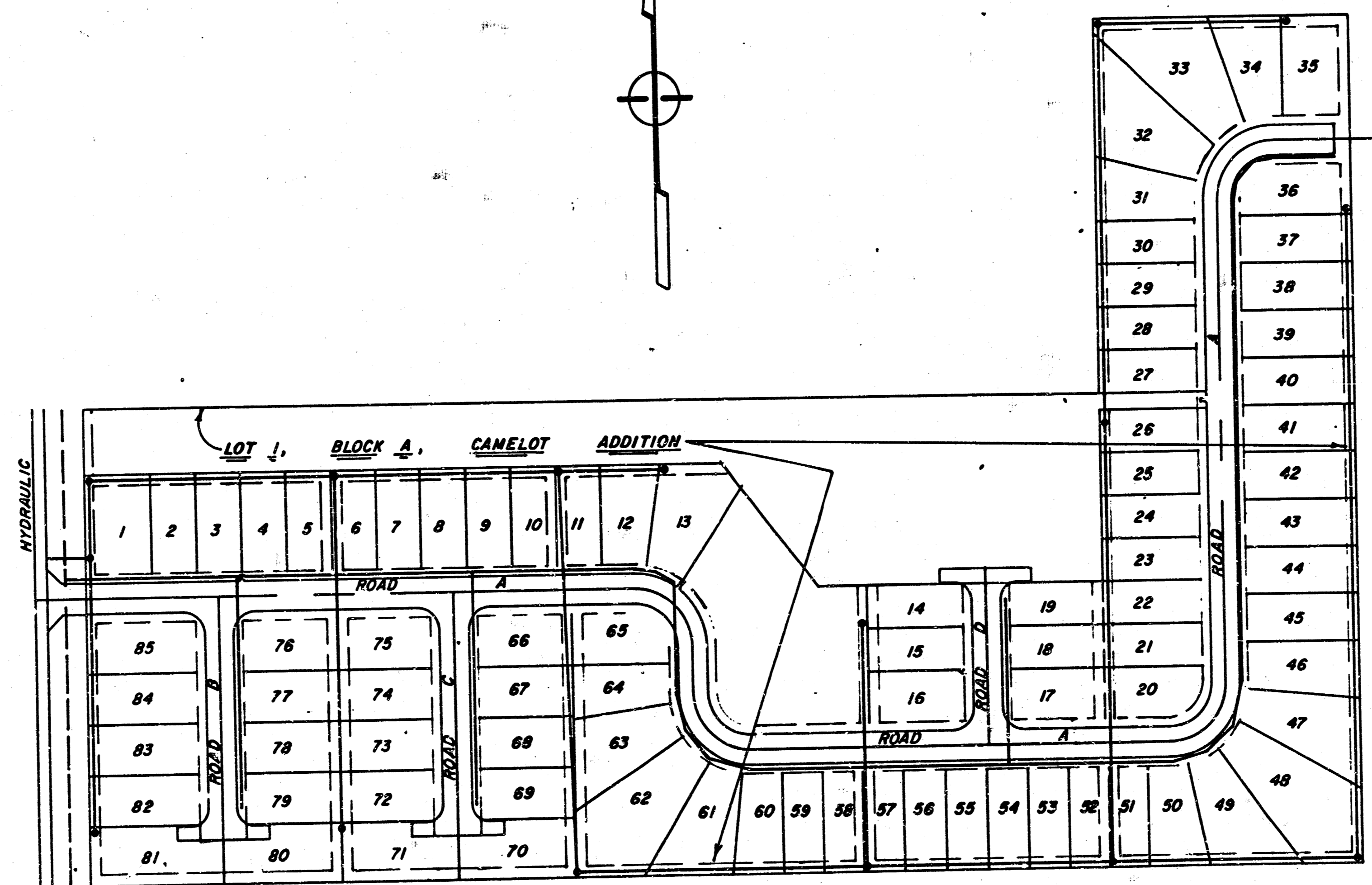
The Contractor shall not dump, deposit, or store any earthwork excavation onto adjacent properties or within street right-of-way without permission from those adjacent owners. The Contractor shall also not grade either temporarily or otherwise any drainage onto adjacent properties.

The Contractor shall advise the Owner of tree and shrub removal on the project and only perform this where it is necessary or where it is directed by the Owner.

The Contractor shall remove completely from the site any excess earthwork excavation materials, trees or shrubs, construction materials, and any other debris in order to leave the project site in a good clean condition.



LOCATION MAP

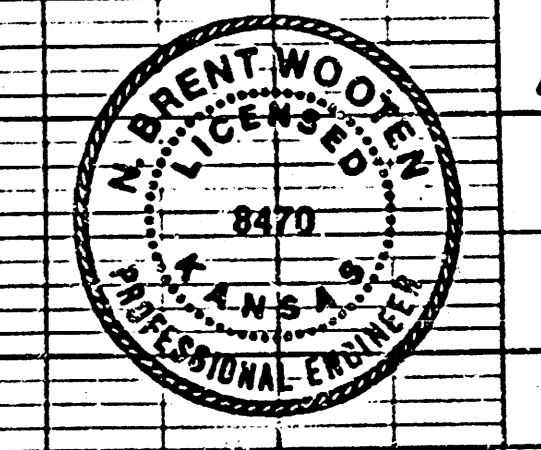
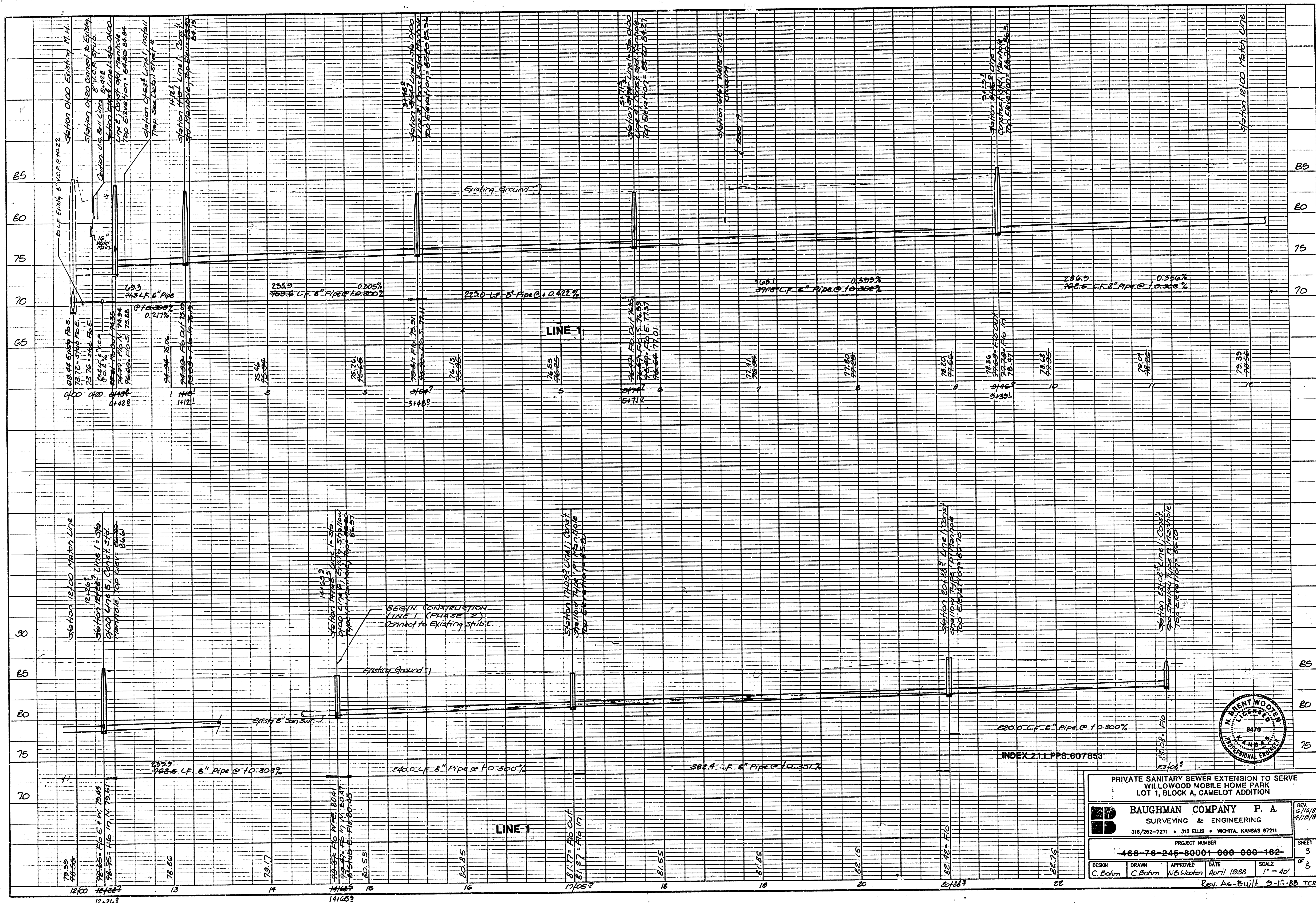


Phase 2
Rev. 4/16/89
SS. Rev. 4/19/89
HO Rev. 4/20/89

SS. Rev. 6/16/88

BAUGHMAN COMPANY P. A.
SURVEYING & ENGINEERING
316/282-7271 • 315 ELLIS • WICHITA, KANSAS 67211

FILMED FROM THE BEST AVAILABLE COPY



PRIVATE SANITARY SEWER EXTENSION TO SERVE
WILLOW MOBILE HOME PARK
LOT 1, BLOCK A, CAMELOT ADDITION

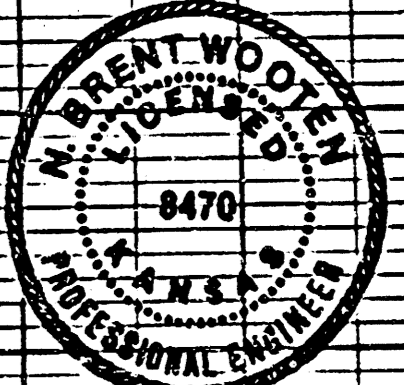
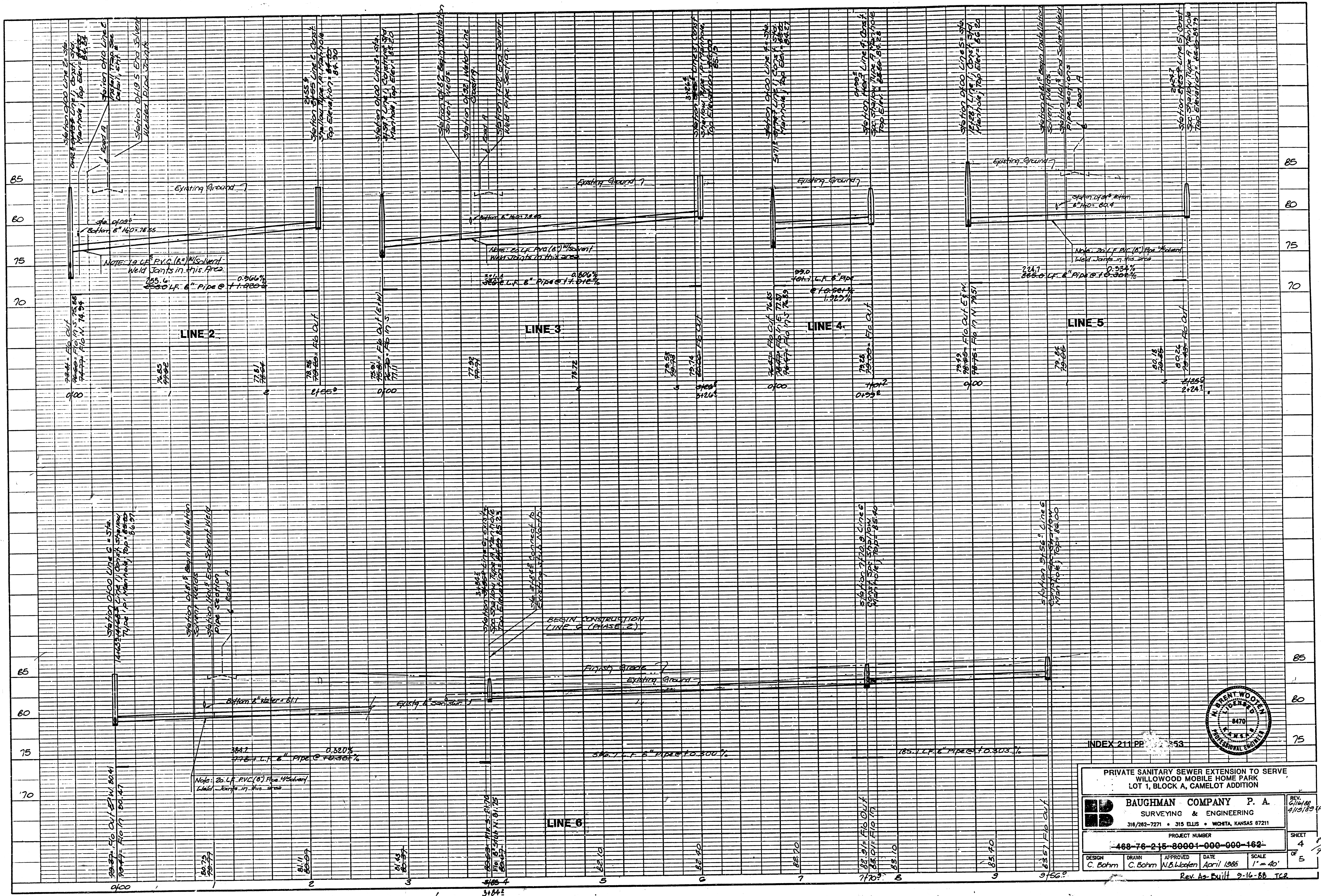
BAUGHMAN COMPANY P. A.
SURVEYING & ENGINEERING
316/262-7271 • 315 ELLIS • WICHITA, KANSAS 67211

PROJECT NUMBER
468-76-245-80001-000-000-162

DESIGN: C. Bohm
DRAWN: C. Bohm
APPROVED: W.B. Wooden
DATE: April 1988
SCALE: 1" = 40'
SHEET: 3 OF 5

Rev. As-Built 2-11-88 TCR

FILMED FROM THE BEST AVAILABLE COPY...



INDEX 211 PP 53

PRIVATE SANITARY SEWER EXTENSION TO SERVE WILLOWOOD MOBILE HOME PARK LOT 1, BLOCK A, CAMELOT ADDITION

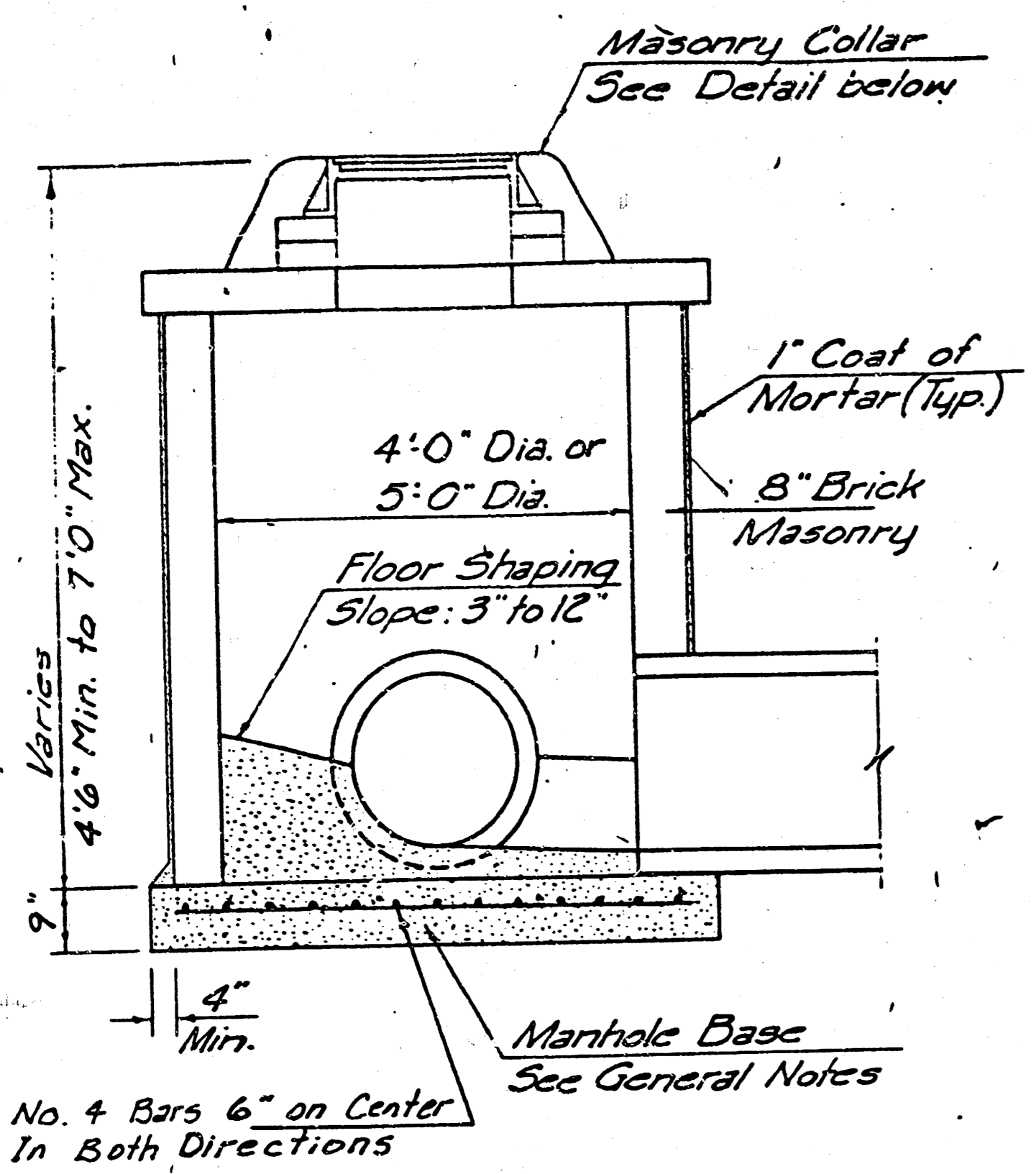
BAUGHMAN COMPANY P. A.
 SURVEYING & ENGINEERING
 318/282-7271 • 315 ELLIS • WICHITA, KANSAS 67211

PROJECT NUMBER
468-76-245-80001-000-000-162-

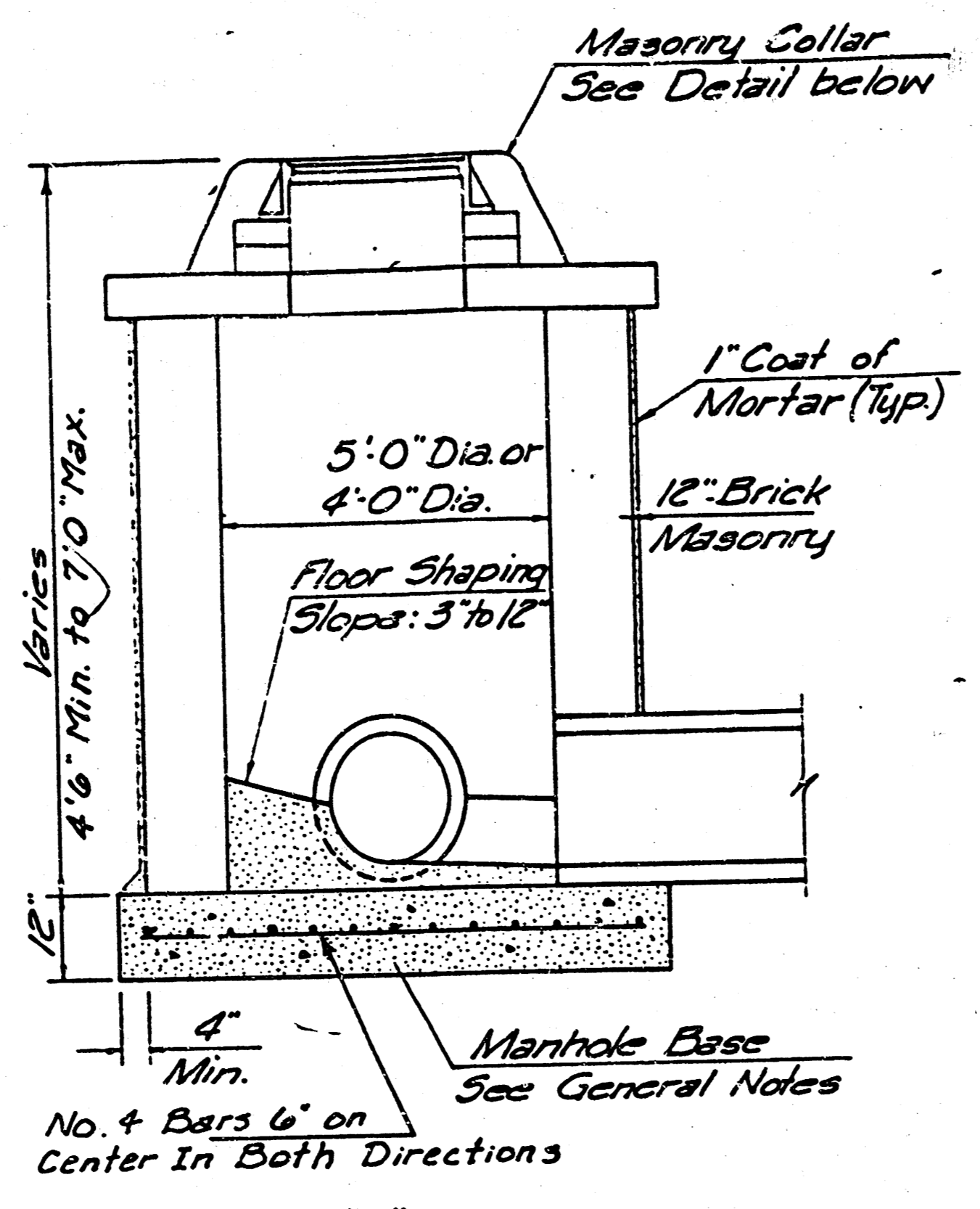
DESIGN: C. Bohm DRAWN: C. Bohm APPROVED: N.B. Loken DATE: April 1985 SCALE: 1" = 40'
 Rev. As-Built 9-16-88 TCB

REV. 4/10/88 4/10/89 (Pr. 2)
 SHEET 4 OF 5

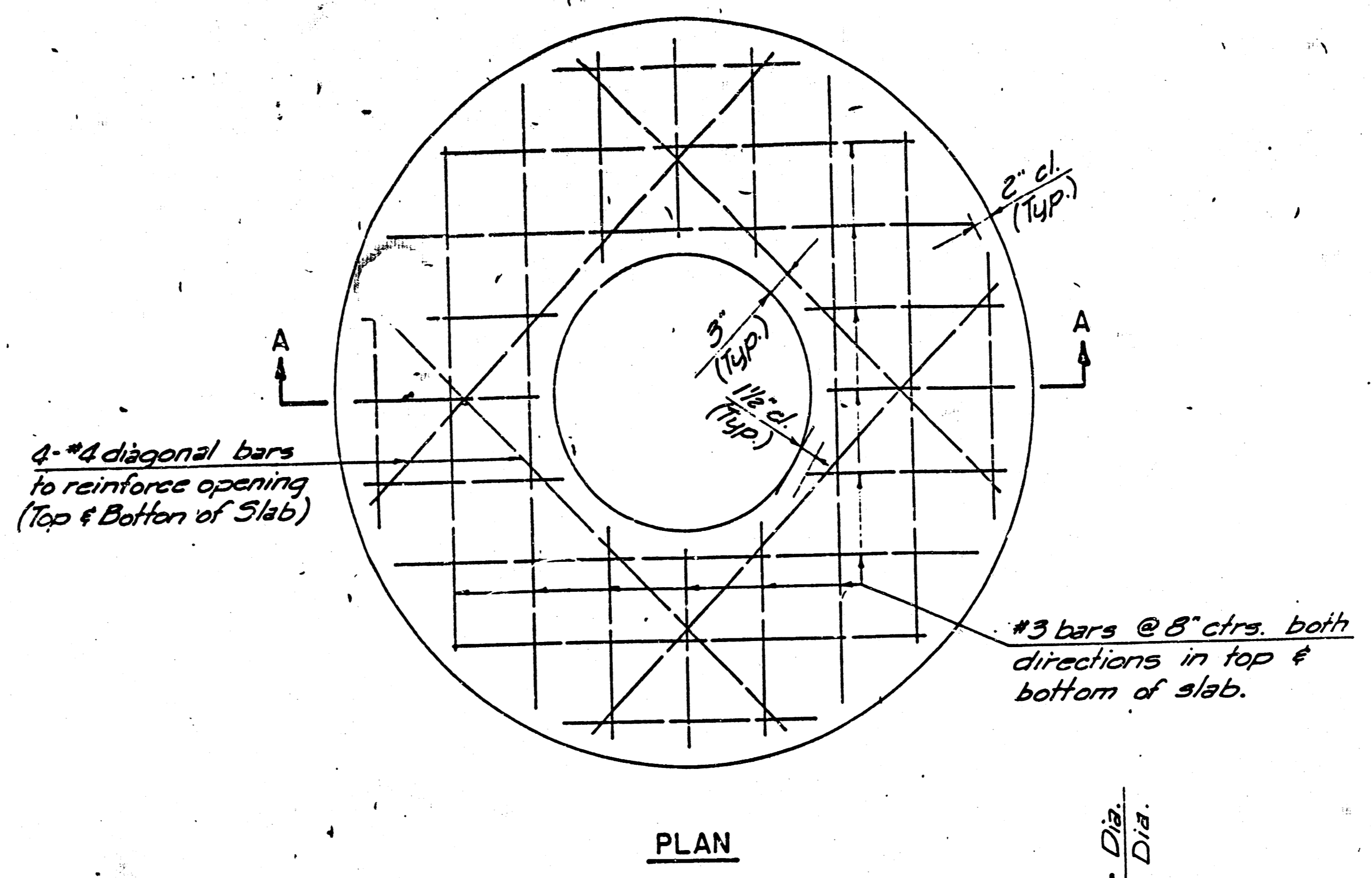
FILMED FROM THE BEST AVAILABLE COPY....



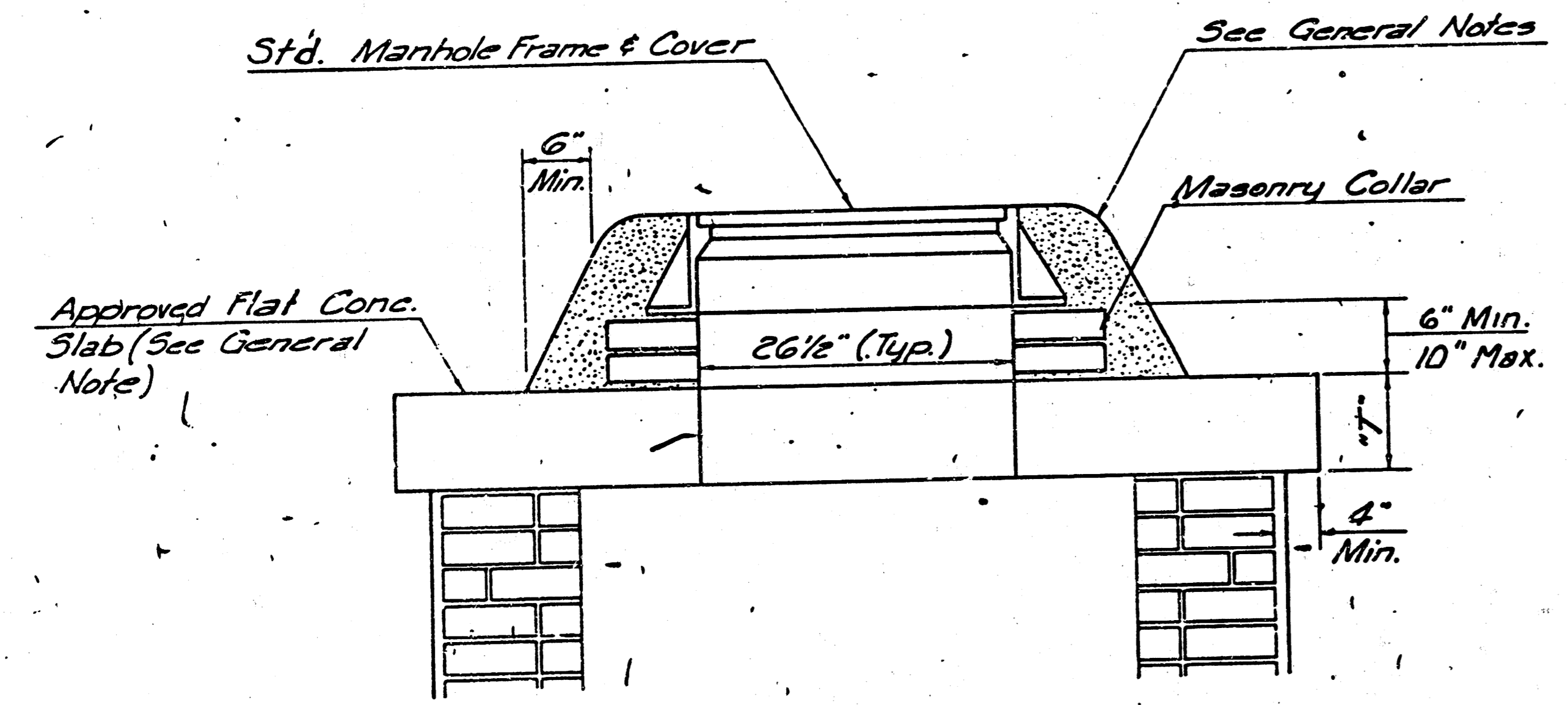
SHALLOW TYPE "A" MANHOLE



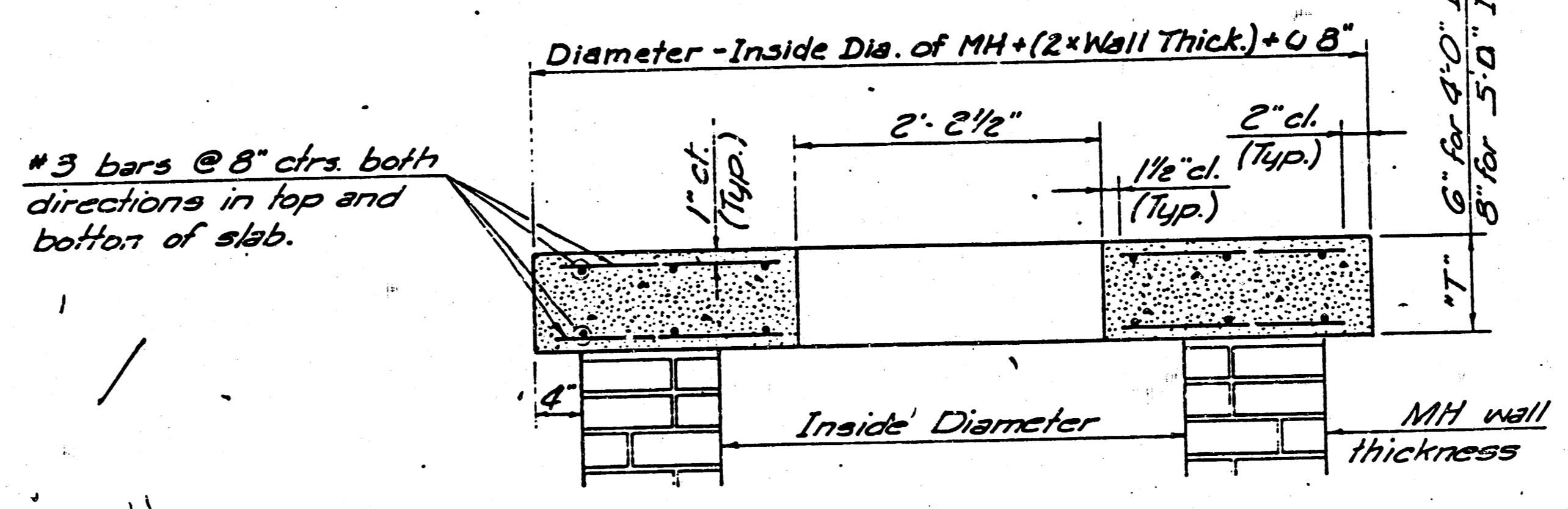
SHALLOW TYPE "B" MANHOLE



PLAN

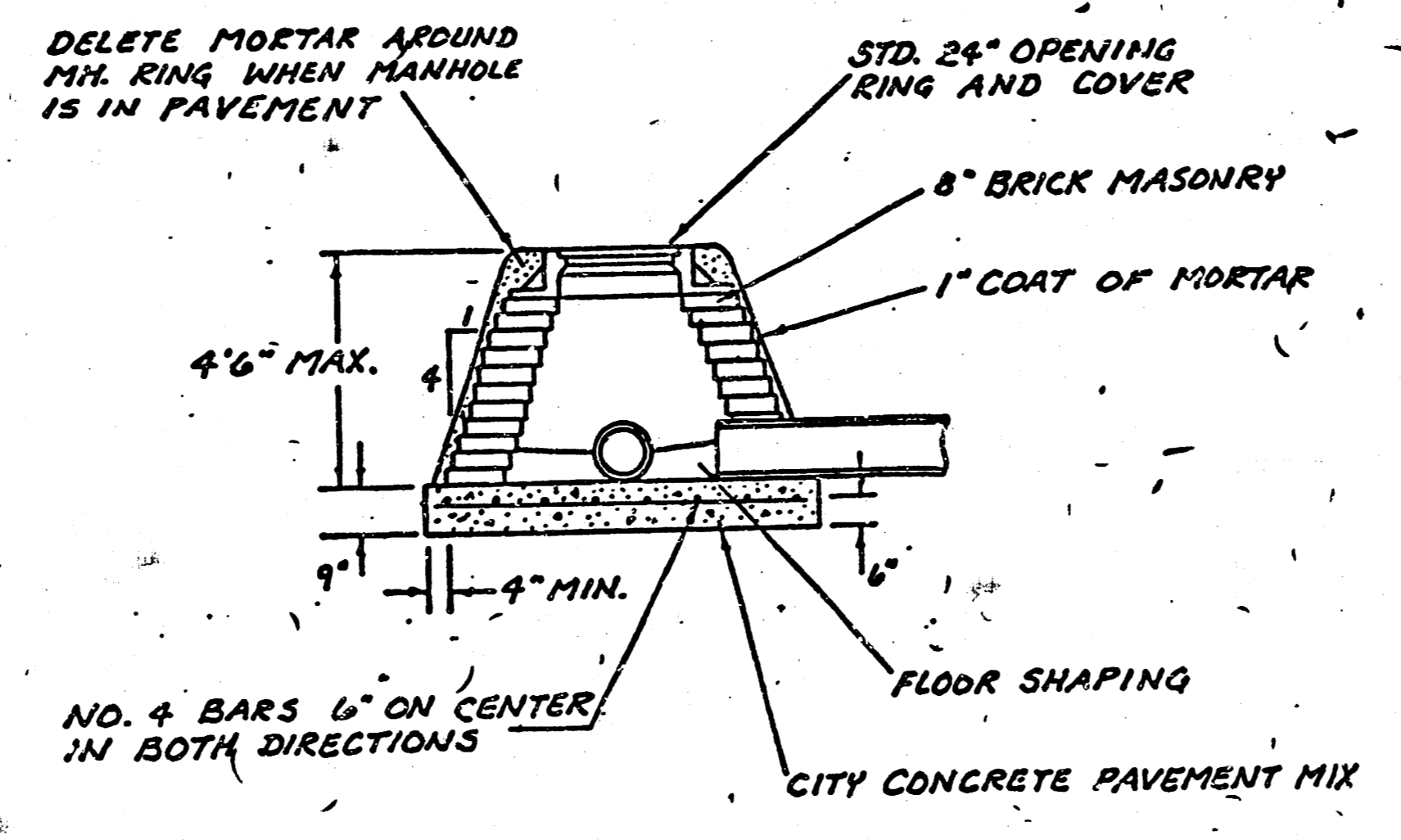


MASONRY COLLAR DETAIL

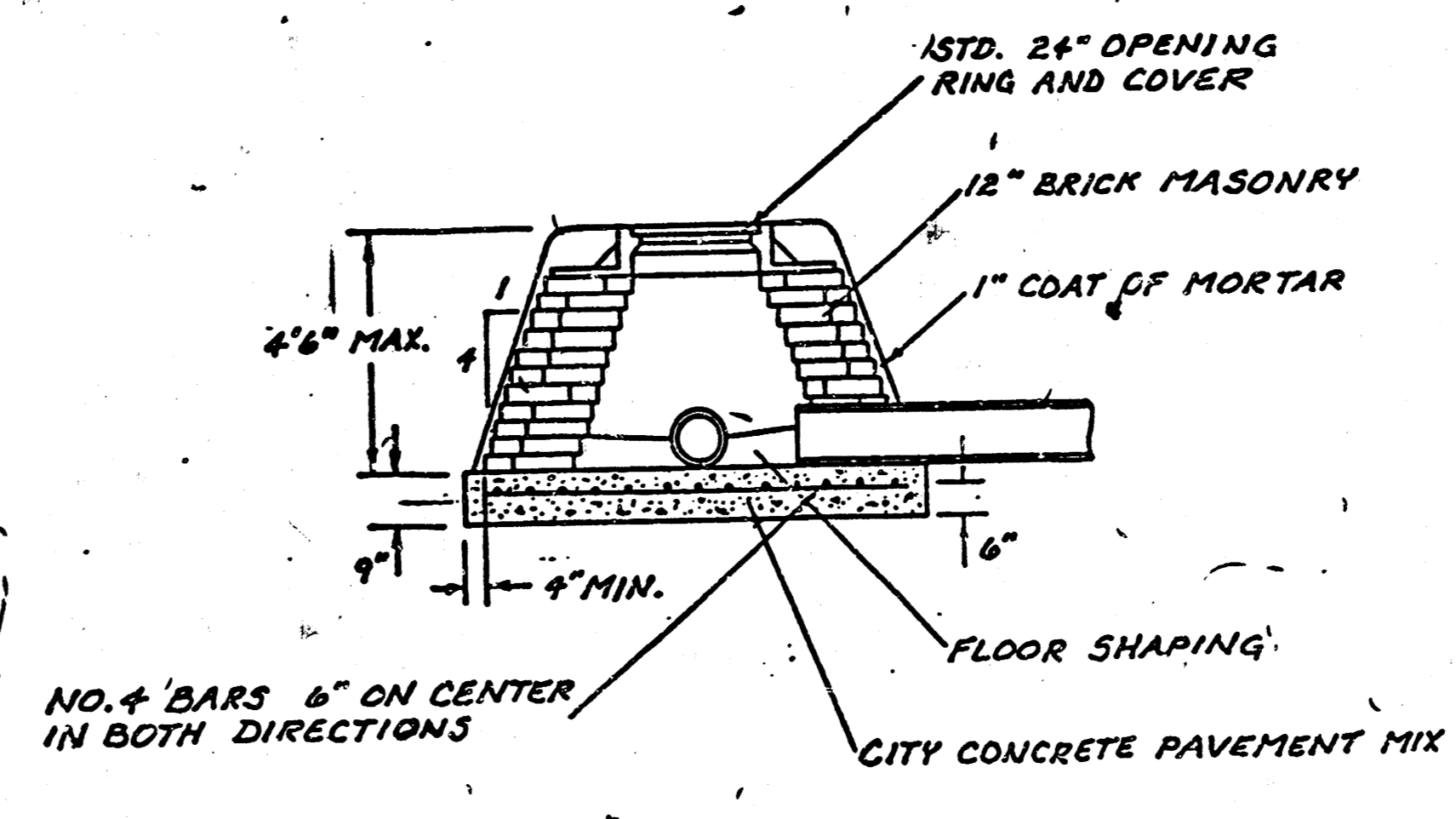


SECTION A-A

AT CONCRETE SLAB DETAILS.



SPECIAL SHALLOW TYPE "A" MANHOLE



SPECIAL SHALLOW TYPE "B" MANHOLE

GENERAL NOTES

- MORTAR USED IN MASONRY CONSTRUCTION SHALL CONTAIN 8 SACKS OF CEMENT PER CUBIC YARD. CONCRETE USED IN MANHOLE BASES SHALL CONFORM TO THE REQUIREMENTS OF CONCRETE FOR CONCRETE PAVEMENT CONSTRUCTION AS SPECIFIED IN THE CITY STANDARD PAVING SPECIFICATIONS USING CITY CONCRETE CEMENT MIX WITHOUT AIR ENTRAINING ADMIXTURE. MORTAR SHALL BE PLACED AROUND THE MANHOLE RING AS SHOWN ON THE DRAWINGS WHEN MANHOLES ARE CONSTRUCTED IN UNPAVED AREAS. TYPE "A" SHALLOW MANHOLES CAN BE USED ON SEWERS WHEN THE MANHOLE IS NOT LOCATED WITHIN PUBLIC STREET PAVEMENT. MANHOLES CONSTRUCTED WHERE PIPE SIZES ARE SMALLER THAN 24" SHALL HAVE AN INSIDE DIAMETER OF 4". MANHOLES CONSTRUCTED WHERE PIPE SIZES ARE 24" OR LARGER SHALL HAVE AN INSIDE DIAMETER OF 5". COMPLETED MANHOLE SHALL BE WITHOUT LEAKS AND WATER TIGHT.
- REINFORCING STEEL SHALL BE INSTALLED IN THE MANHOLE BASES AND SHALL CONSIST OF NO. 4 BARS PLACED ON 6" CENTERS IN BOTH DIRECTIONS. THE MANHOLE BASE REINFORCEMENT SHALL BE PLACED 6" ABOVE THE BOTTOM OF THE MANHOLE BASE. ALL COSTS FOR FURNISHING AND INSTALLING REINFORCING STEEL SHALL BE INCLUDED IN THE UNIT PRICE BID FOR THE MANHOLE.
- THE FLOORS OF ALL MANHOLES SHALL BE SHAPED WITH FLOW CHANNELS SUCH THAT THE MANHOLES WILL BE SELF CLEANING AND FREE OF AREAS WHERE SOLIDS COULD BE DEPOSITED AS SEWAGE FLOWS THROUGH THE MANHOLE FROM ALL INLET PIPES TO THE OUTLET PIPE. FLOW CHANNELS SHALL BE FORMED TO MATCH THE BOTTOM HALVES OF THE INFLOWING PIPES AND THE OUTFLOWING PIPE AS SHOWN BY THE DRAWINGS. MANHOLE FLOORS SHALL HAVE SLOPES OF 3 INCHES PER FOOT IN THE AREAS OUTSIDE OF THE FLOW CHANNELS SLOPED TOWARD THE FLOW CHANNELS. PIPES LAID THROUGH MANHOLES SHALL HAVE THE TOP HALF REMOVED TO HEAT LINES FOR THE FULL INSIDE DIAMETER OF THE MANHOLE. MANHOLE FLOORS SHALL THEN BE SHAPED AROUND THE BOTTOM HALF OF THE PIPE WHICH FORMS THE FLOW CHANNEL.
- PIPES INSTALLED WITHIN THE EXCAVATION MADE FOR THE MANHOLE SHALL BE CRADLED WITH CONCRETE TO THE LIMITS OF THE MANHOLE EXCAVATION. WHEN CLAY PIPE IS USED, THE CRADLE SHALL EXTEND TO THE FIRST JOINT OUTSIDE THE MANHOLE. THE CRADLE SHALL BE TERMINATED AT THE CLAY PIPE JOINT IN A MANNER WHICH WILL MAINTAIN THE FLEXIBILITY OF THE JOINT. COST OF CRADLE WITHIN MANHOLE EXCAVATION OR TO CLAY PIPE JOINTS ADJACENT TO MANHOLE SHALL BE INCLUDED IN THE UNIT PRICE BID FOR THE MANHOLE.
- MANHOLE COVER CASTINGS AND MANHOLE FRAME CASTINGS SHALL CONFORM TO THE REQUIREMENTS AS INDICATED IN THE STANDARD SPECIFICATIONS AND AS SHOWN IN THE STANDARD DETAIL DRAWINGS.
- THE CROWNS OF INFLOWING PIPES SHALL NEVER BE SET LOWER THAN THE CROWN OF THE OUTFLOWING PIPE.
- STANDARD SHALLOW MANHOLES TYPE "A" AND "B" SHALL BE PAID FOR AT THE UNIT PRICE BID PER EACH FOR THE TYPE AND DIAMETER INDICATED. STANDARD SPECIAL SHALLOW MANHOLES TYPE "A" AND "B" SHALL BE PAID FOR AT THE UNIT PRICE BID PER EACH FOR THE TYPE INDICATED. ALL STANDARD SHALLOW MANHOLE DIAMETERS WILL BE 4' UNLESS INDICATED OTHERWISE.

CITY OF WICHITA, KANSAS
STANDARD SHALLOW MANHOLES
TYPE 'A' AND TYPE 'B'

Designed by	Checked by	9/9
Drawn by	Date	5/5

FILMED FROM THE BEST AVAILABLE COPY