

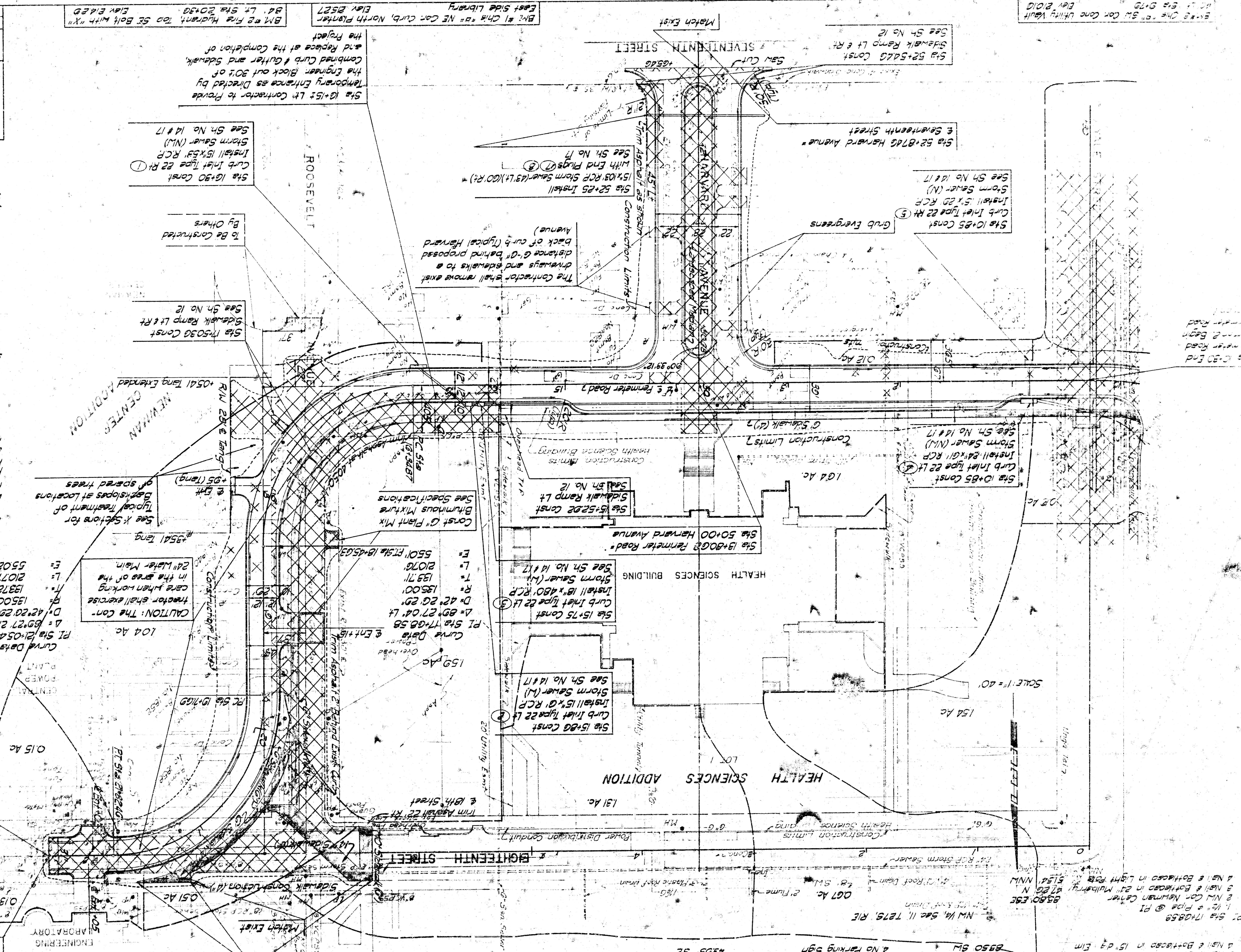
STREET AND STORM SEWER IMPROVEMENTS PERIMETER ROAD SECTION I

PROFESSIONAL ENGINEERING CONSULTANTS, P.A.
 ENGINEERS
 WICHITA, KANSAS

Drawn by _____
 Checked by _____
 Date _____

UTILITIES
 Water
 Gas Service Co
 Telephone
 SM Bell
 KGE
 City of Wichita
 San Sewer
 City of Wichita

NOTES:
 Basements at the following addresses are to be backfilled as part of this Project. Backfill material shall be of a type similar to the parent material and shall be placed in 8" lifts and compacted to 95% maximum dry density as determined by ASTM D-1557-70 (See Specifications).
 1822 Yale
 1822 Harvard
 1825 Harvard
 1828 Yale
 Backfill material shall be approved by the Engineer.
 See SH No 9 for 18th Street Improvements
 See SH No 11 for Raving Plan



CAUTION: The Contractor shall exercise care when working in the area of the 24" Water Main.

E	5502
L	2107
T	1372
R	1300
D	42' 20" 20"
P	17' 08" 58"
P	17' 08" 58"

Sta 16+15: Lt Contractor to Provide Temporary Entrance as Directed by the Engineer. Block out 30% of Combined Curb & Gutter and Sidewalk, and Replace at the Completion of the Project.
 BM #2 Fire Hydrant, 20' SE Bolt with "X"
 34' Lt Sta 20+30
 ELEV 2142.2

BM #1 CHS "B" NE Cor Curb, North Planter
 ELEV 2152.7
 East Side Library

Sta 52+54.0 Const
 Sidewalk Ramp Lt & Rt
 See SH No 12

Sta 52+87.0 Const
 Harvard Avenue
 See SH No 12

Sta 10+25 Const
 Curb Inlet Type 22 Rt
 Install 15"x10" RCP
 Storm Sewer (N)
 See SH No 14 & 17

The Contractor shall remove existing driveways and sidewalks to a distance of 6' behind proposed back of curb (typical Harvard Avenue)
 Construction Limits
 Trim Asphalt as shown

Sta 52+25 Install
 15"x10" RCP Storm Sewer (43' Lt) (60' Rt)
 With End Pios (3)
 See SH No 17

Sta 16+30 Const
 Curb Inlet Type 22 Rt
 Install 15"x5" RCP
 Storm Sewer (N)
 See SH No 14 & 17

Sta 17+50.3 Const
 Sidewalk Ramp Lt & Rt
 See SH No 12

Sta 10+25 Const
 Curb Inlet Type 22 Lt
 Install 15"x10" RCP
 Storm Sewer (N)
 See SH No 14 & 17

Sta 15+52.0 Const
 Sidewalk Ramp Lt
 See SH No 12

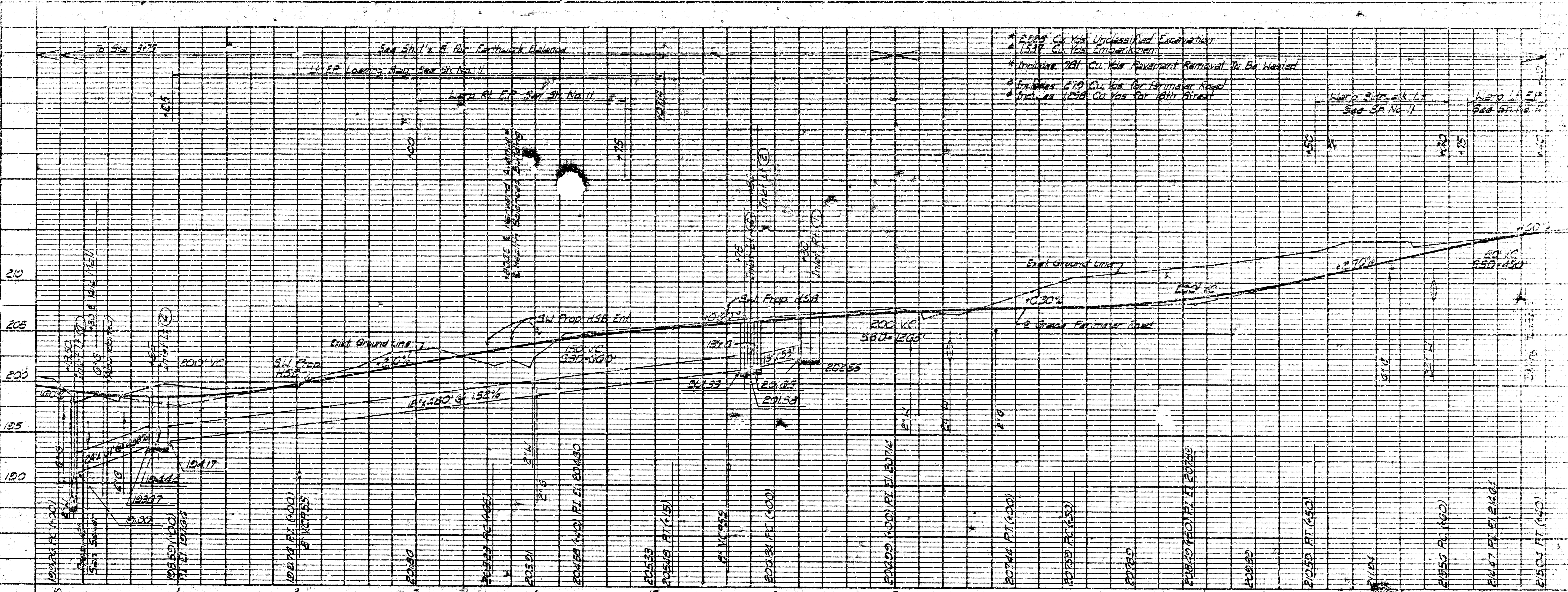
Sta 15+75 Const
 Curb Inlet Type 22 Lt
 Install 15"x10" RCP
 Storm Sewer (N)
 See SH No 14 & 17

Sta 15+80 Const
 Curb Inlet Type 22 Lt
 Install 15"x10" RCP
 Storm Sewer (N)
 See SH No 14 & 17

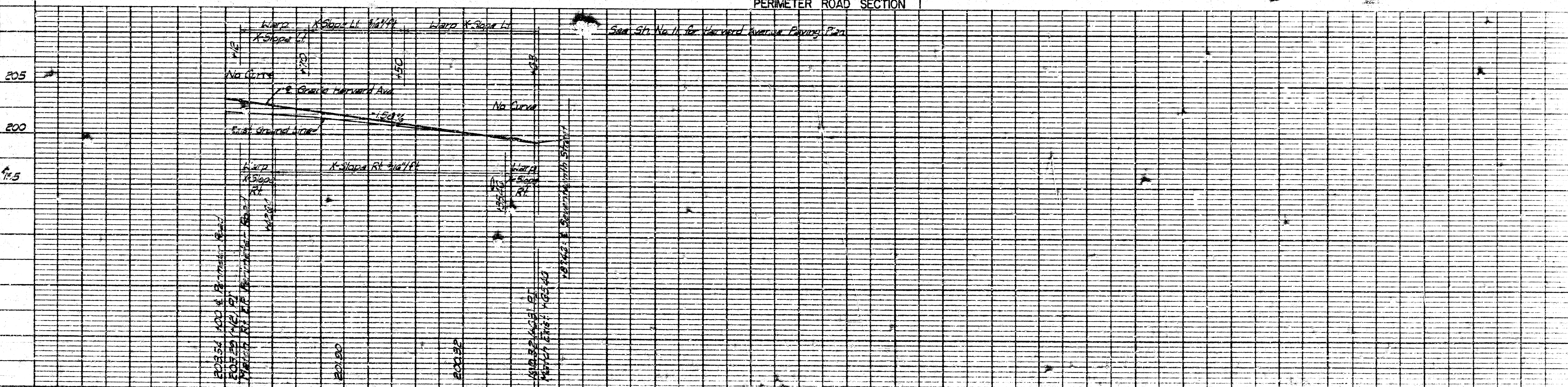
Sta 15+80.0 Const
 Perimeter Road
 Harvard Avenue

Sta 17+08.5 Const
 1. 1/2" x 1/2" Pipe @ P1
 2. NM 1/4, Sec 11, T27S, R1E
 3. NM 1/4, Sec 11, T27S, R1E
 4. NM 1/4, Sec 11, T27S, R1E
 5. NM 1/4, Sec 11, T27S, R1E
 6. NM 1/4, Sec 11, T27S, R1E
 7. NM 1/4, Sec 11, T27S, R1E
 8. NM 1/4, Sec 11, T27S, R1E
 9. NM 1/4, Sec 11, T27S, R1E
 10. NM 1/4, Sec 11, T27S, R1E

2950 SW
 2. 1/2" x 1/2" Pipe @ P1
 3. NM 1/4, Sec 11, T27S, R1E
 4. NM 1/4, Sec 11, T27S, R1E
 5. NM 1/4, Sec 11, T27S, R1E
 6. NM 1/4, Sec 11, T27S, R1E
 7. NM 1/4, Sec 11, T27S, R1E
 8. NM 1/4, Sec 11, T27S, R1E
 9. NM 1/4, Sec 11, T27S, R1E
 10. NM 1/4, Sec 11, T27S, R1E



- * 25' x 25' Cu Yds Unclassified Excavation
- * 15' x 15' Cu Yds Unclassified Excavation
- * Inclusion 761 Cu Yds Government Removal To Be Handled
- * Inclusion 279 Cu Yds For Perimeter Road
- * Inclusion 1250 Cu Yds For 18th Street



PROFILES
PERIMETER ROAD SECTION I
HARVARD AVENUE