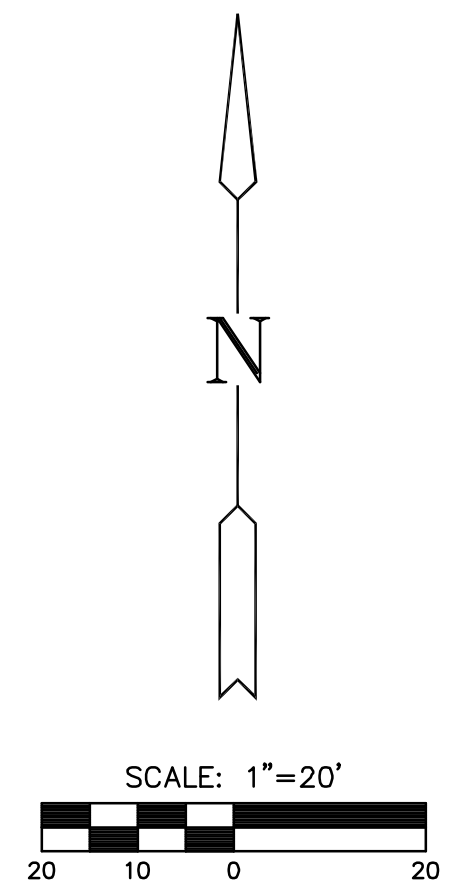
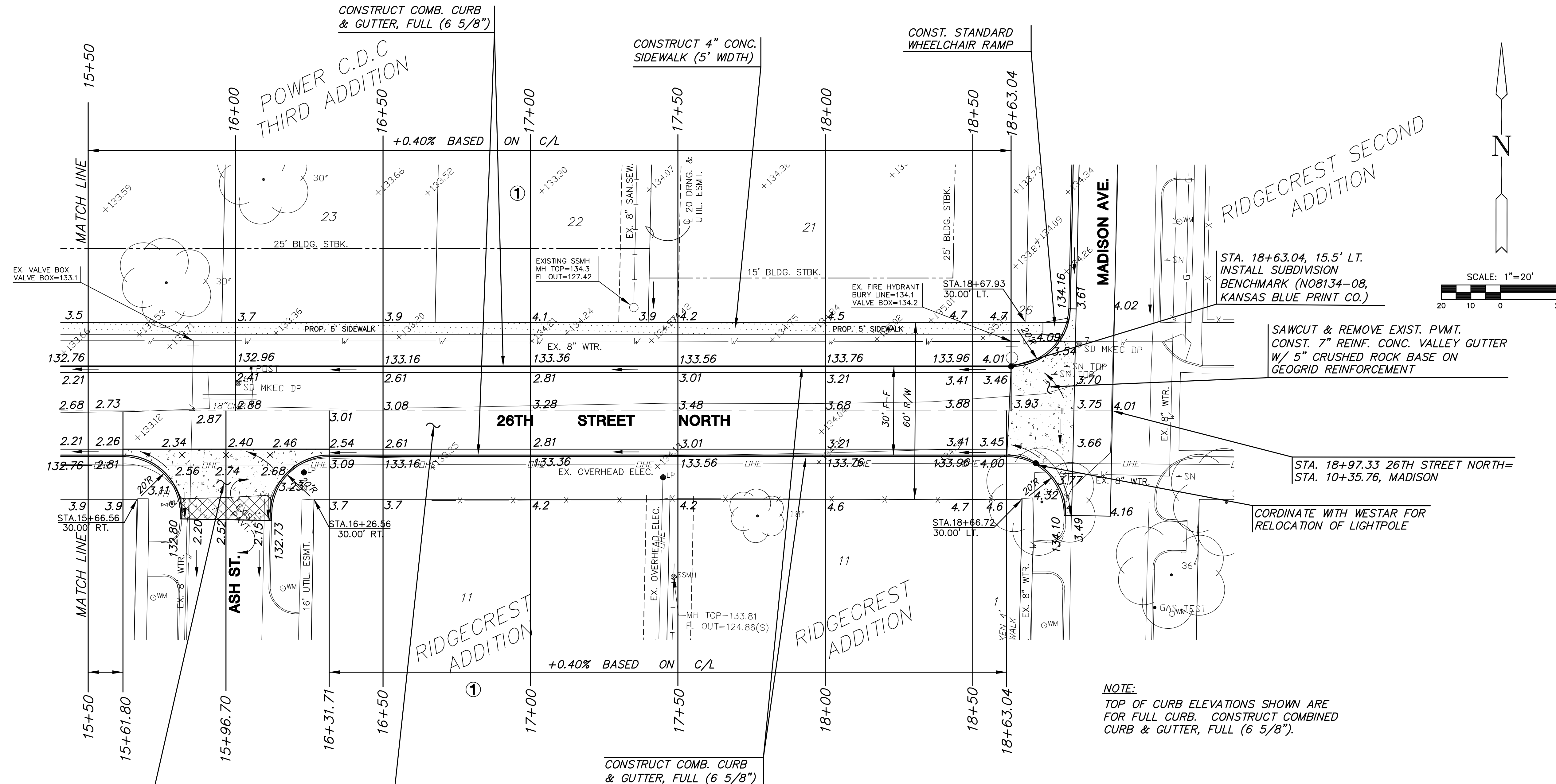


**PAVING AND INCIDENTAL DRAINAGE PLANS  
POWER C.D.C. 3RD ADDITION**



SAWCUT & REMOVE EXIST. PVMT.  
CONST. 7" REINF. CONC. VALLEY GUTTER  
W/ 5" CRUSHED ROCK BASE ON  
GEOGRID REINFORCEMENT

CONSTRUCT 5" A.C. PVMT.  
W/3" BIT BASE OVER 5"  
REINF. CRUSHED ROCK

CONSTRUCT COMB. CURB  
& GUTTER, FULL (6 5/8")

**NOTE:**  
TOP OF CURB ELEVATIONS SHOWN ARE  
FOR FULL CURB. CONSTRUCT COMBINED  
CURB & GUTTER, FULL (6 5/8").

- LEGEND**
- STREET SIGN & SIGN LOCATION  
(SEE SIGN ASSEMBLY TABLE  
FOR TYPE & STATION OF SIGN)
  - PAVEMENT REMOVAL
  - 10' CURB TRANSITION

**26TH ST. NO.  
PAVING**  
SHEET TITLE  
472-83774  
PROJECT NUMBER

JTC  
DESIGN BY  
DDG  
DRAWN BY  
GJA  
CHECKED BY

ISSUED  
May 2008  
REVISED

SHEET NO.  
9 of 34