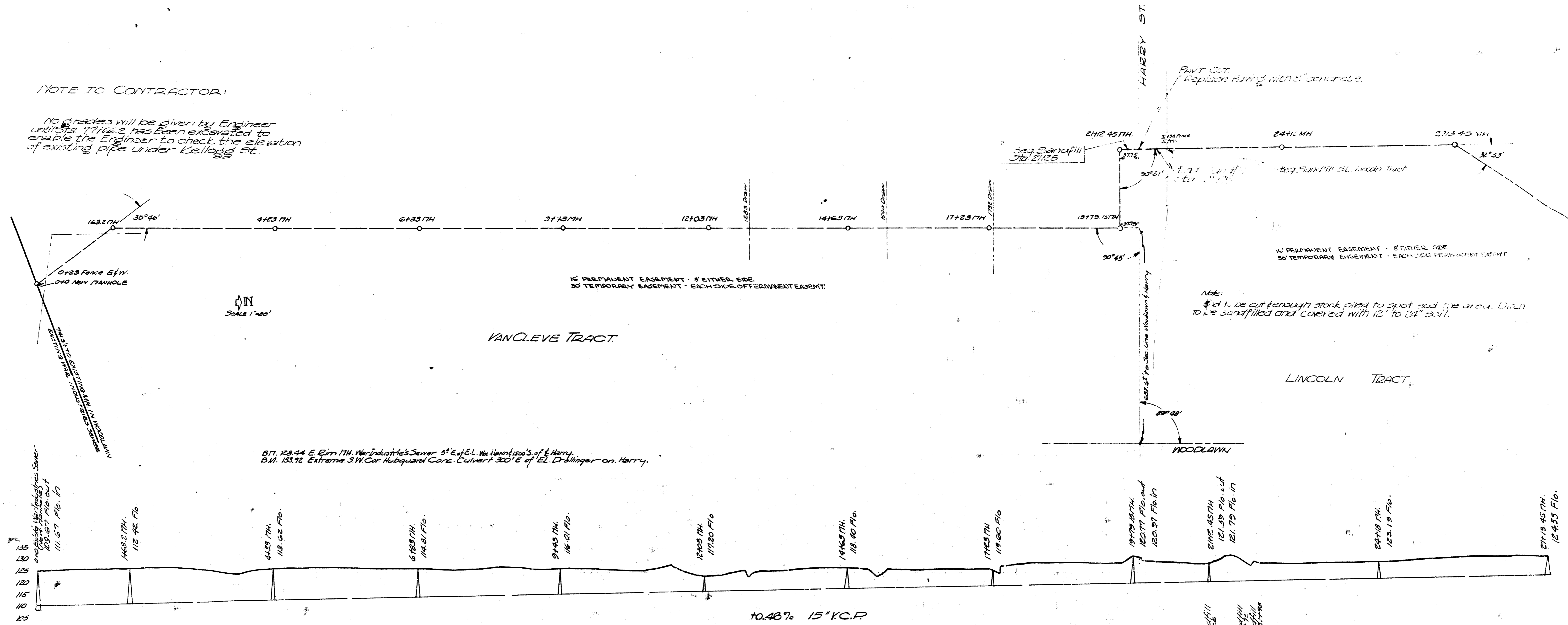


**NOTE TO CONTRACTOR:**

No Grades will be given by Engineer until the 17' High has been excavated to enable the Engineer to check the elevation of existing pipe under Callaghy St.

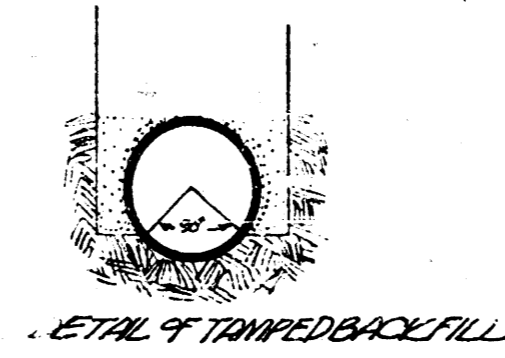


17  
16  
15  
14  
13  
12  
11  
10  
9  
8  
7  
6  
5  
4  
3  
2  
1  
0

B71 123.54 E. 20th St. War Industries Sewer 5' E. of E.L. Williams' 120' S. of E. Harry.  
B.W. 123.12 Extreme S.W. Corner Square Corner Culvert 300' E. of E.L. Callaghy on Harry.

10.46% 15' V.C.P.

Note: If leaving the backfill is not considered practical in the opinion of the City Engineer due to the condition of ditch, backfill to the top of the pipe may be ordered at the price bid for backfill.

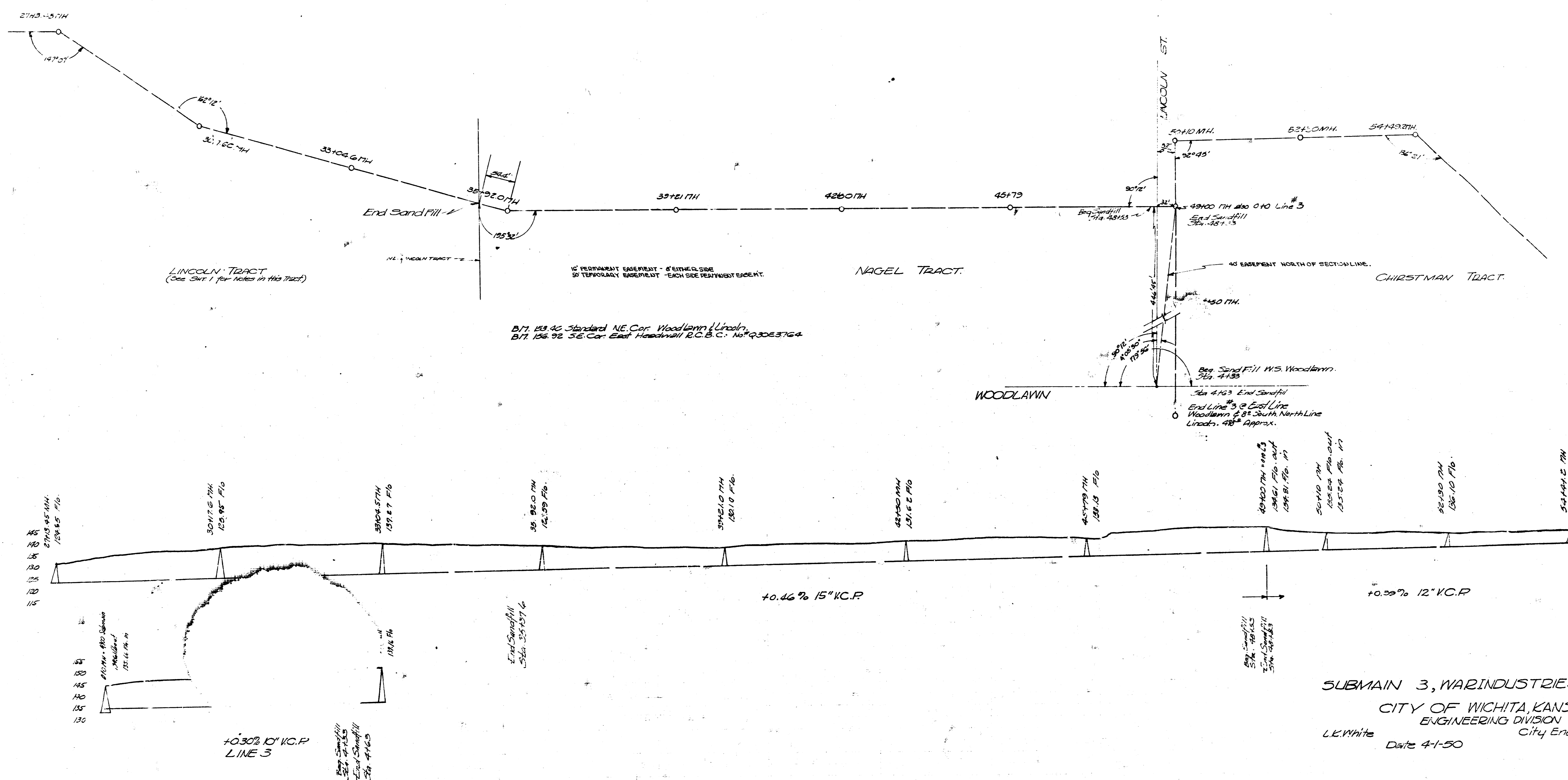
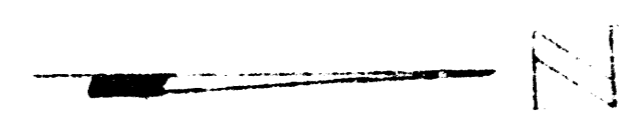


SCHEDULE 400 TAMPED BACKFILL

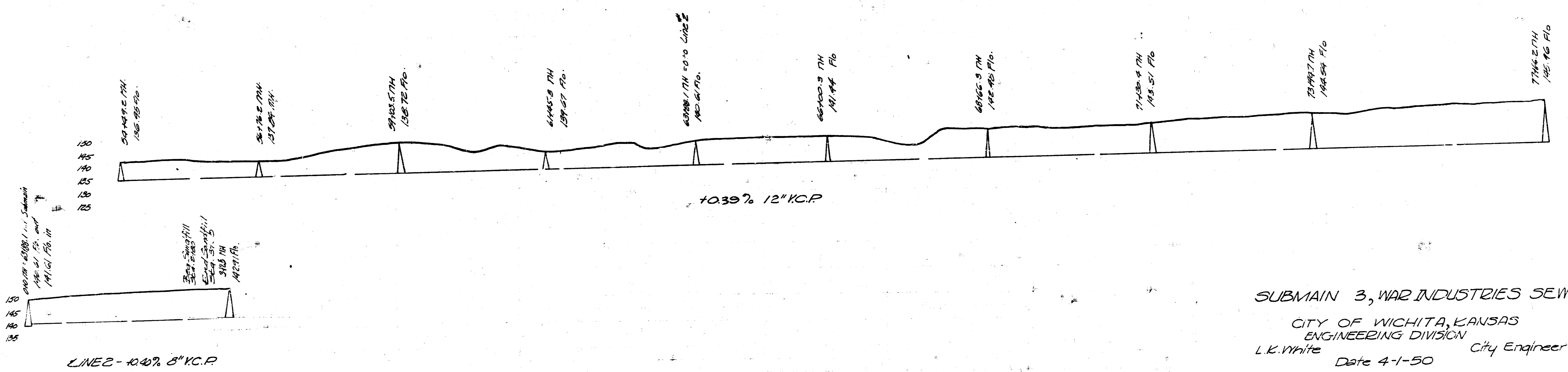
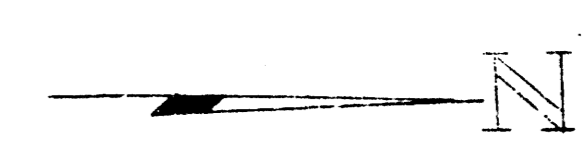
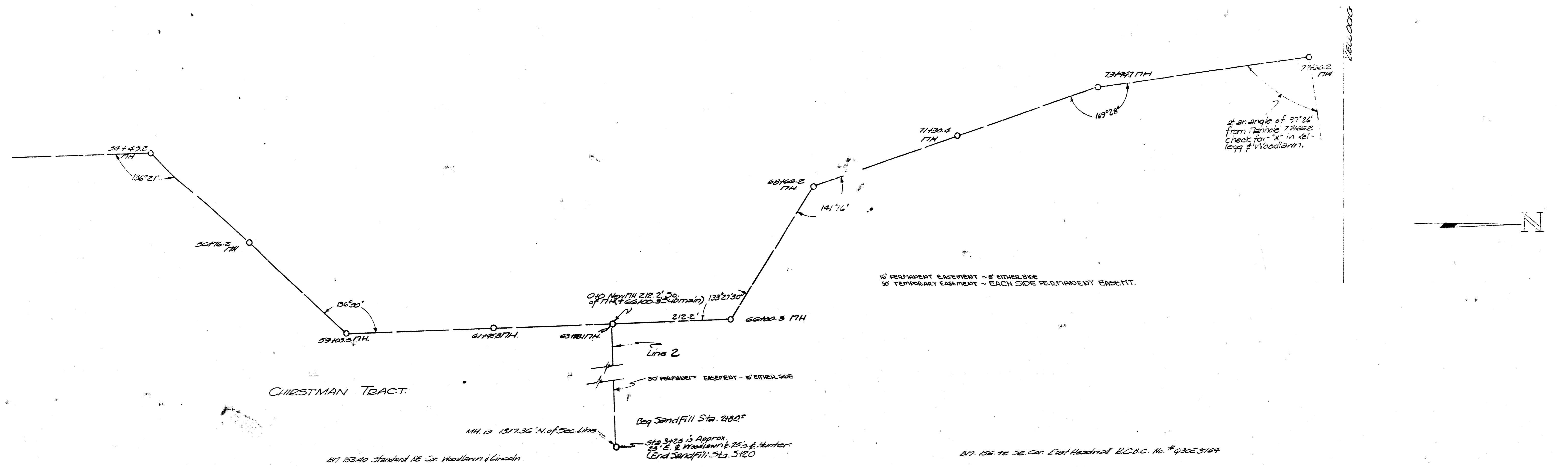
DEPTH	2'-0"	2'-6"
15'	—	over 12'
12'	—	over 11'

SUBMAIN 3, WAR INDUSTRIES SEWER  
CITY OF WICHITA, KANSAS  
ENGINEERING DIVISION  
L.E. White City Engineer  
Date: 4-1-50

Julian April-5-1950 Sheet 4/3



SUBMAIN 3, WAR INDUSTRIES SEWER  
 CITY OF WICHITA, KANSAS  
 ENGINEERING DIVISION  
 L.K. White City Engineer  
 Date 4-1-50



SUBMAIN 3, WAR INDUSTRIES SEWER  
 CITY OF WICHITA, KANSAS  
 ENGINEERING DIVISION  
 L.K. White City Engineer  
 Date 4-1-50