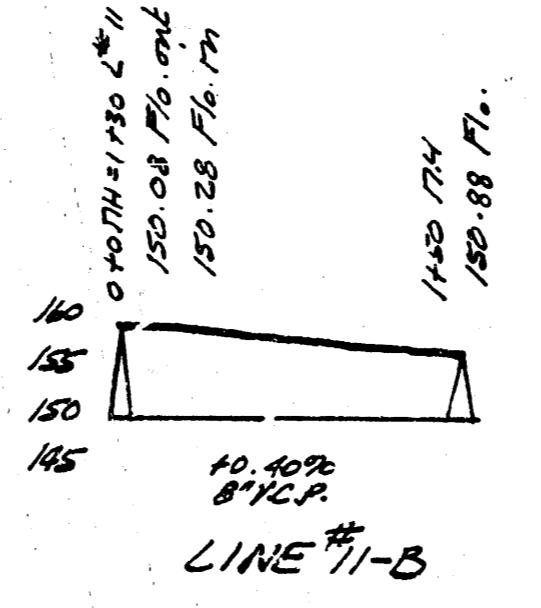
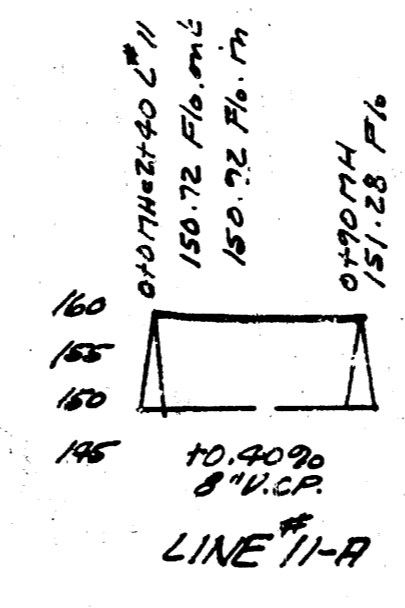
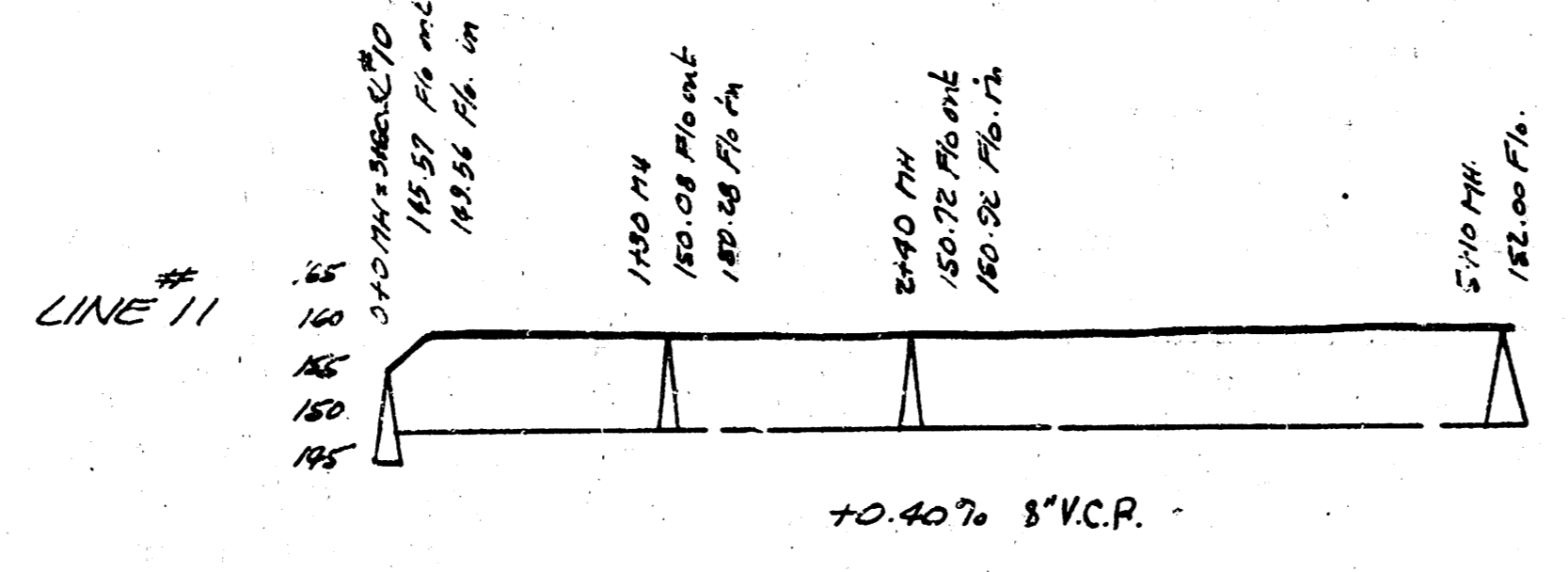
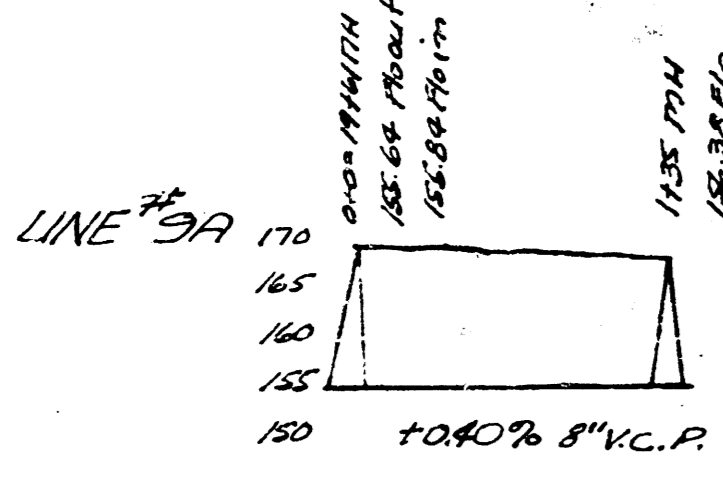
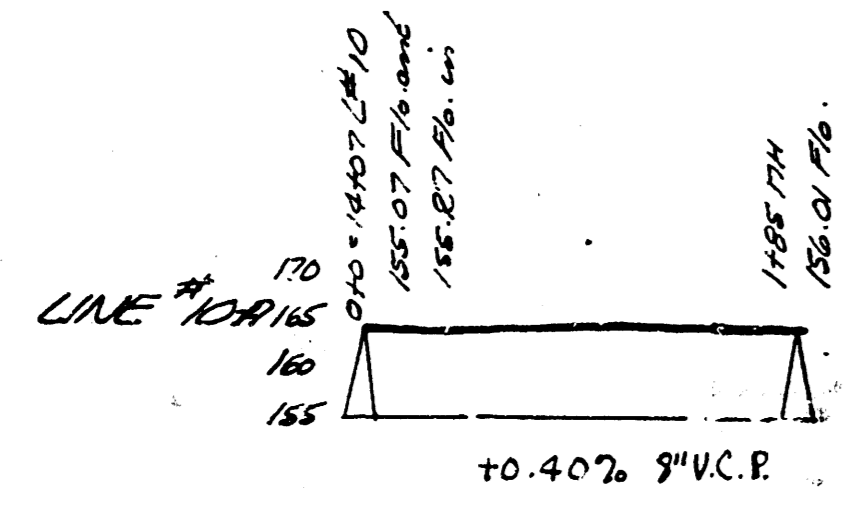
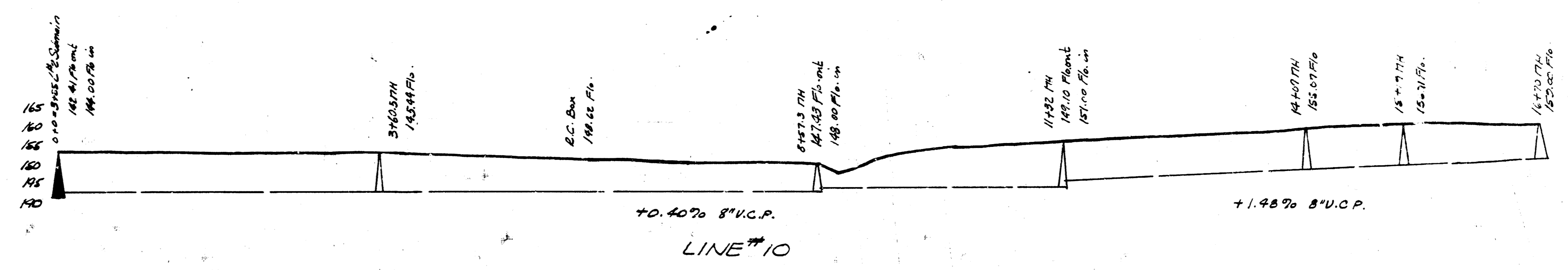
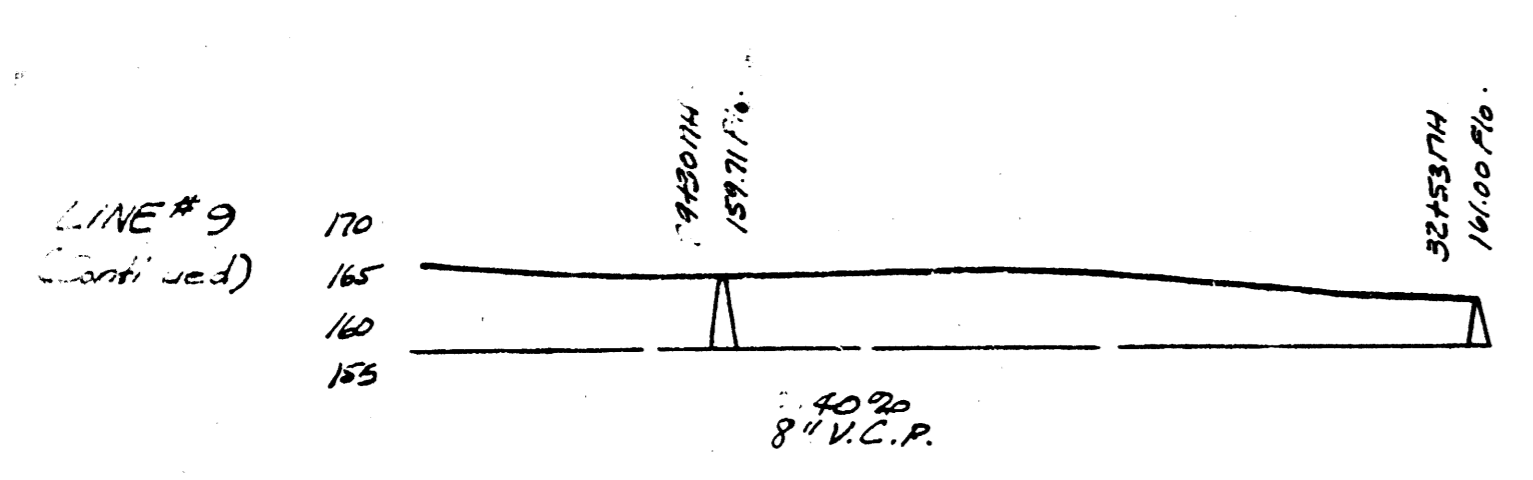
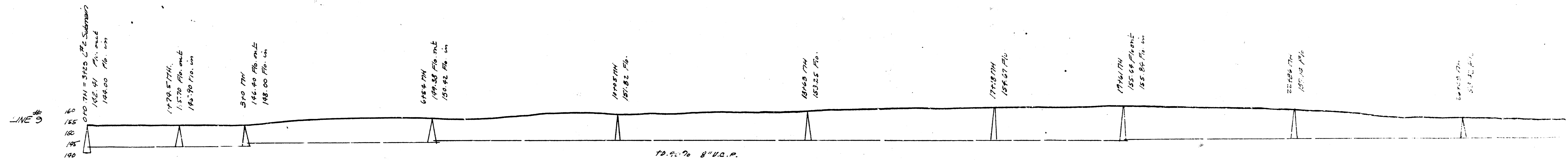
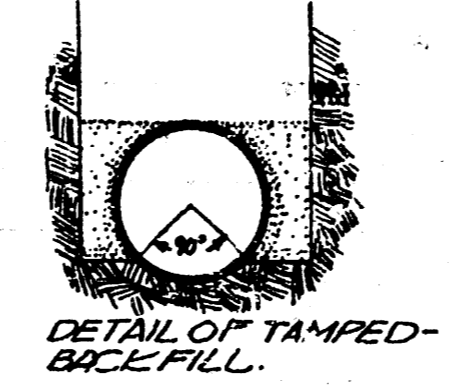
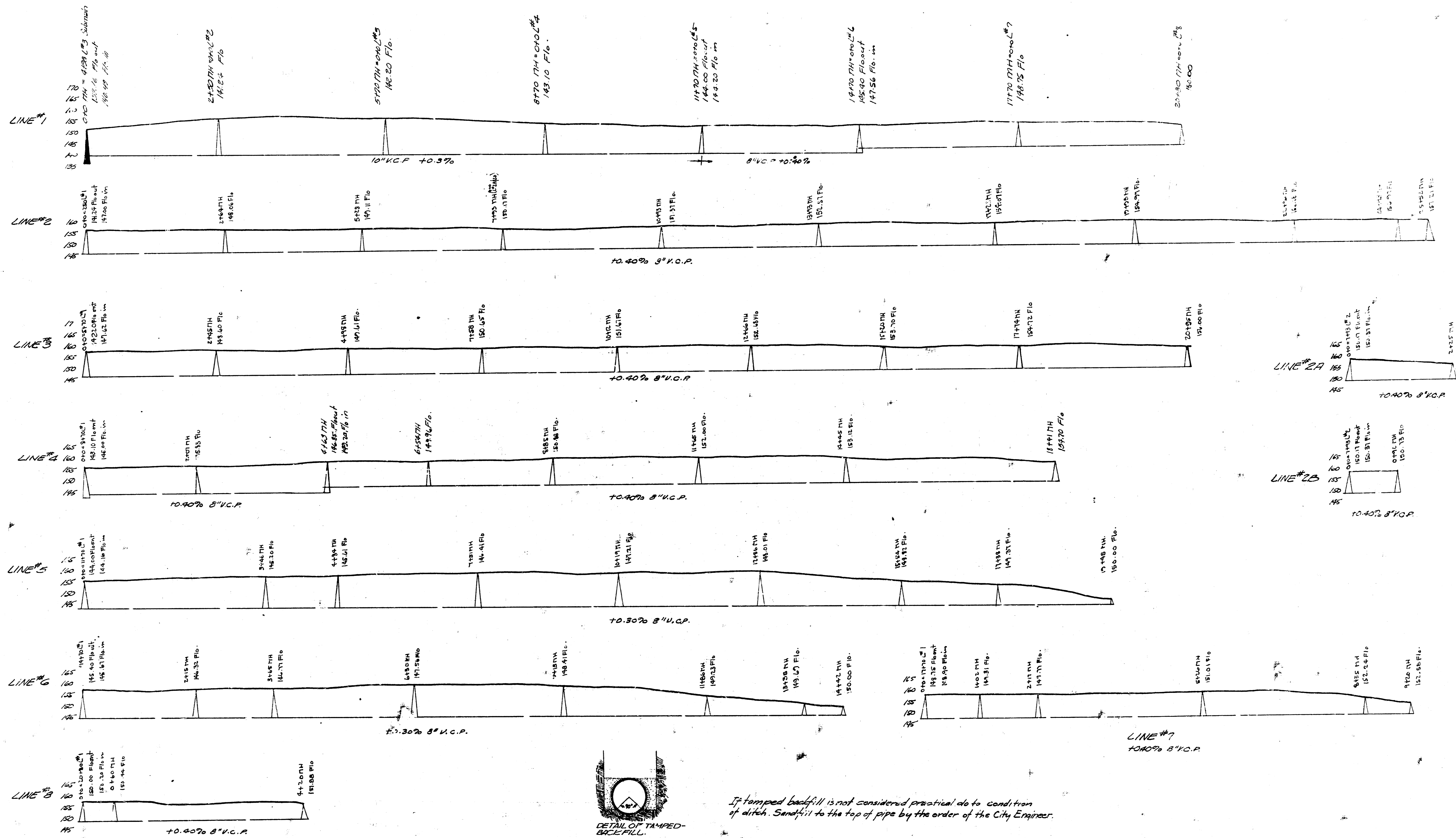


LATERAL 1, DISTRICT 3, WAR INDUSTRIES SEWER
 CITY OF WICHITA, KANSAS
 1950





DEPTH	1'	2'	3'	4'	5'	6'	7'	8'	9'	10'
1'	1'	1'	1'	1'	1'	1'	1'	1'	1'	1'
2'	1'	1'	1'	1'	1'	1'	1'	1'	1'	1'
3'	1'	1'	1'	1'	1'	1'	1'	1'	1'	1'
4'	1'	1'	1'	1'	1'	1'	1'	1'	1'	1'
5'	1'	1'	1'	1'	1'	1'	1'	1'	1'	1'
6'	1'	1'	1'	1'	1'	1'	1'	1'	1'	1'
7'	1'	1'	1'	1'	1'	1'	1'	1'	1'	1'
8'	1'	1'	1'	1'	1'	1'	1'	1'	1'	1'
9'	1'	1'	1'	1'	1'	1'	1'	1'	1'	1'
10'	1'	1'	1'	1'	1'	1'	1'	1'	1'	1'

If tamped backfill is not considered practical do to condition of ditch. Sandfill to the top of pipe by the order of the City Engineer.