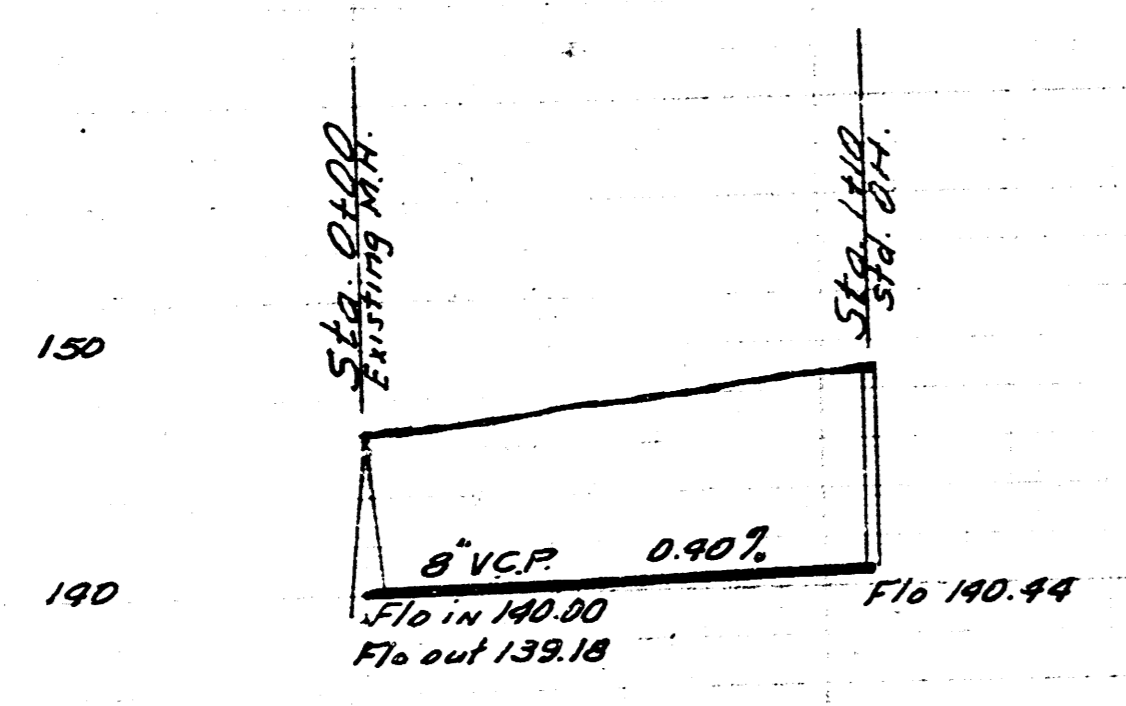
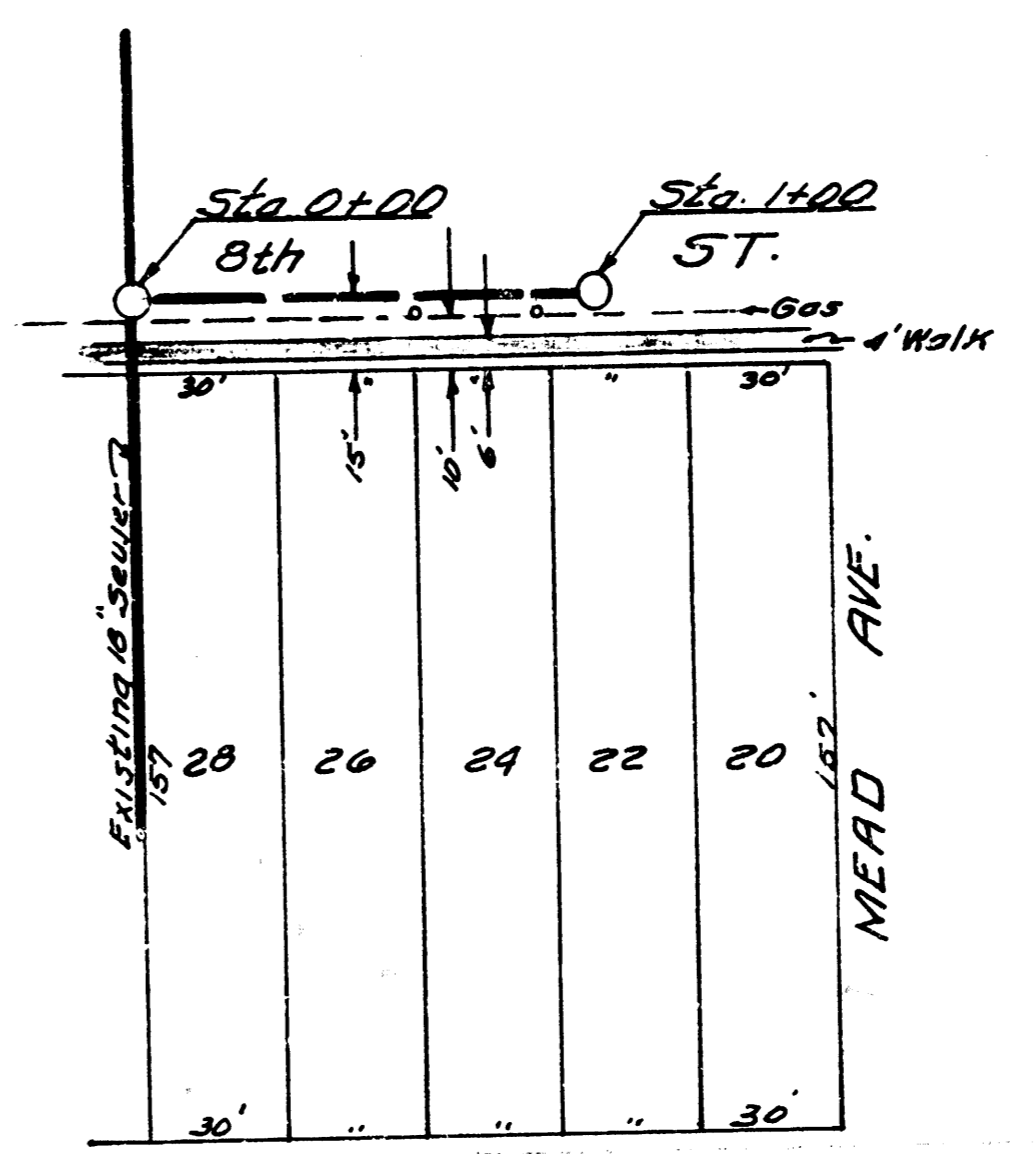


B.M. 146.61 W. 117' 114.4' 0+00



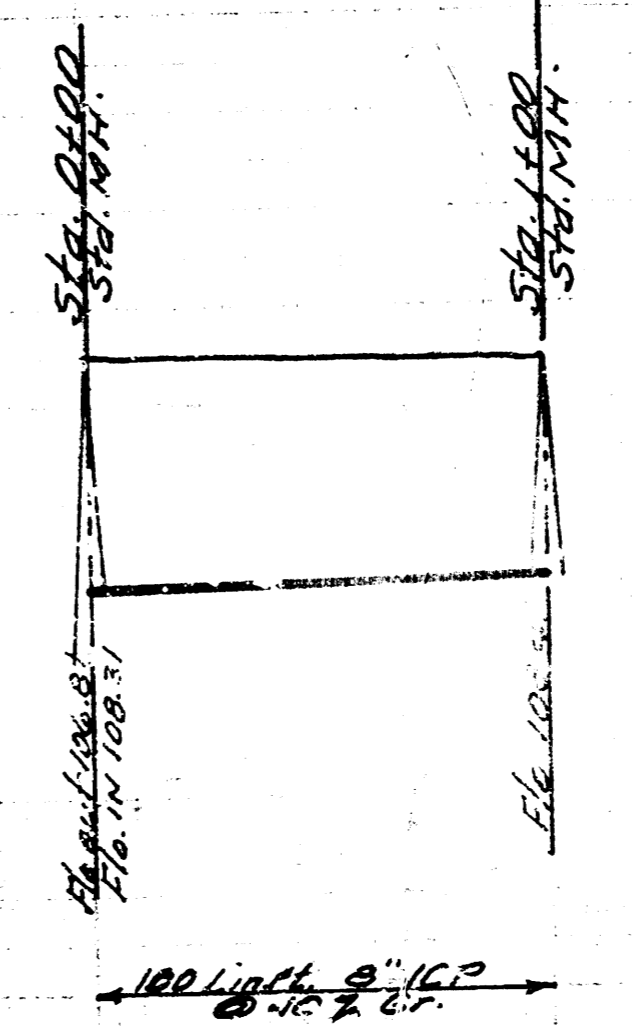
Date 12-20-54  
Plan by M. McClain  
Checked by K. J. S.

EXT. LAT. 6 SUB. 3 WIS.  
CITY OF WICHITA KANSAS  
B.E. SMITH CITY ENGINEER  
Private Contract



B.M. 115.54 T in Troy F. Plug NE. cor Mosley & 8th.

Date 2-21-55  
Plan by M. McClain  
Checked by K. J. S.



SERVICE LAT. 8th & MEAD  
CITY OF WICHITA KANSAS  
B.E. SMITH CITY ENGINEER  
Private Contract