

Survey by C.L.G.
Plan by J.R.W.
Bk. No. CLG 07

B. M. #1 171.63 "M" in Mueller on Fire Hydrant
NE Cor. Intersection of Killarney Place
and Lawrence Ln. (Est. by J. H.)
B. M. #2 169.75 "T" S. Rim M.H. 122.0' east of
E. L. Lawrence Ln & 82' South of N. L.
Killarney Place.

G. W. McCLELLAN
2ND. ADDITION

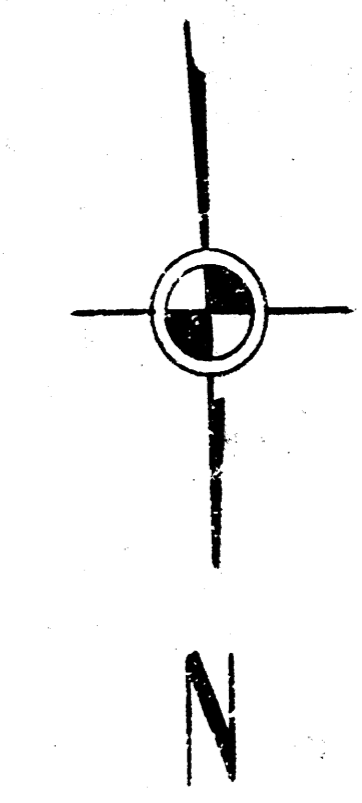
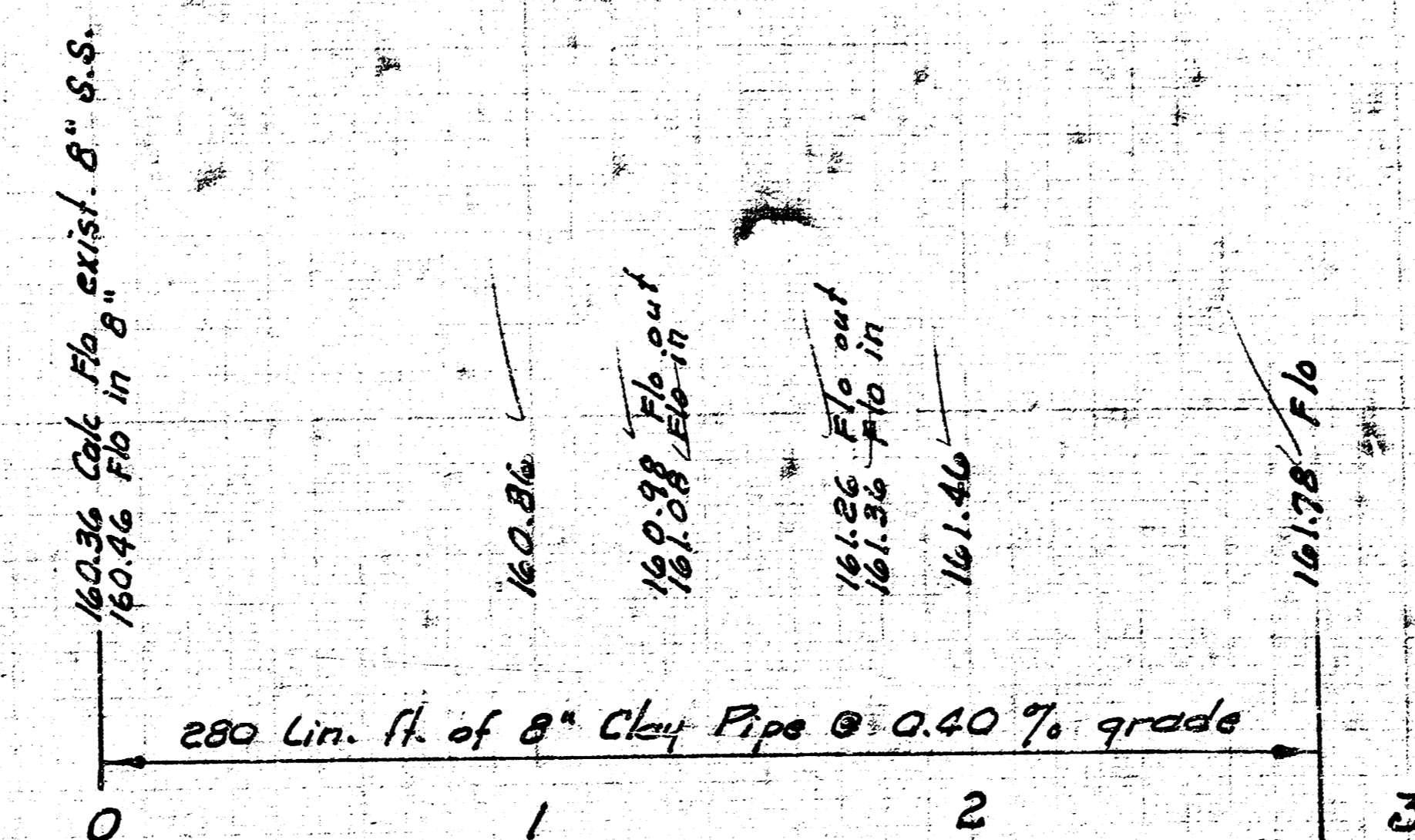
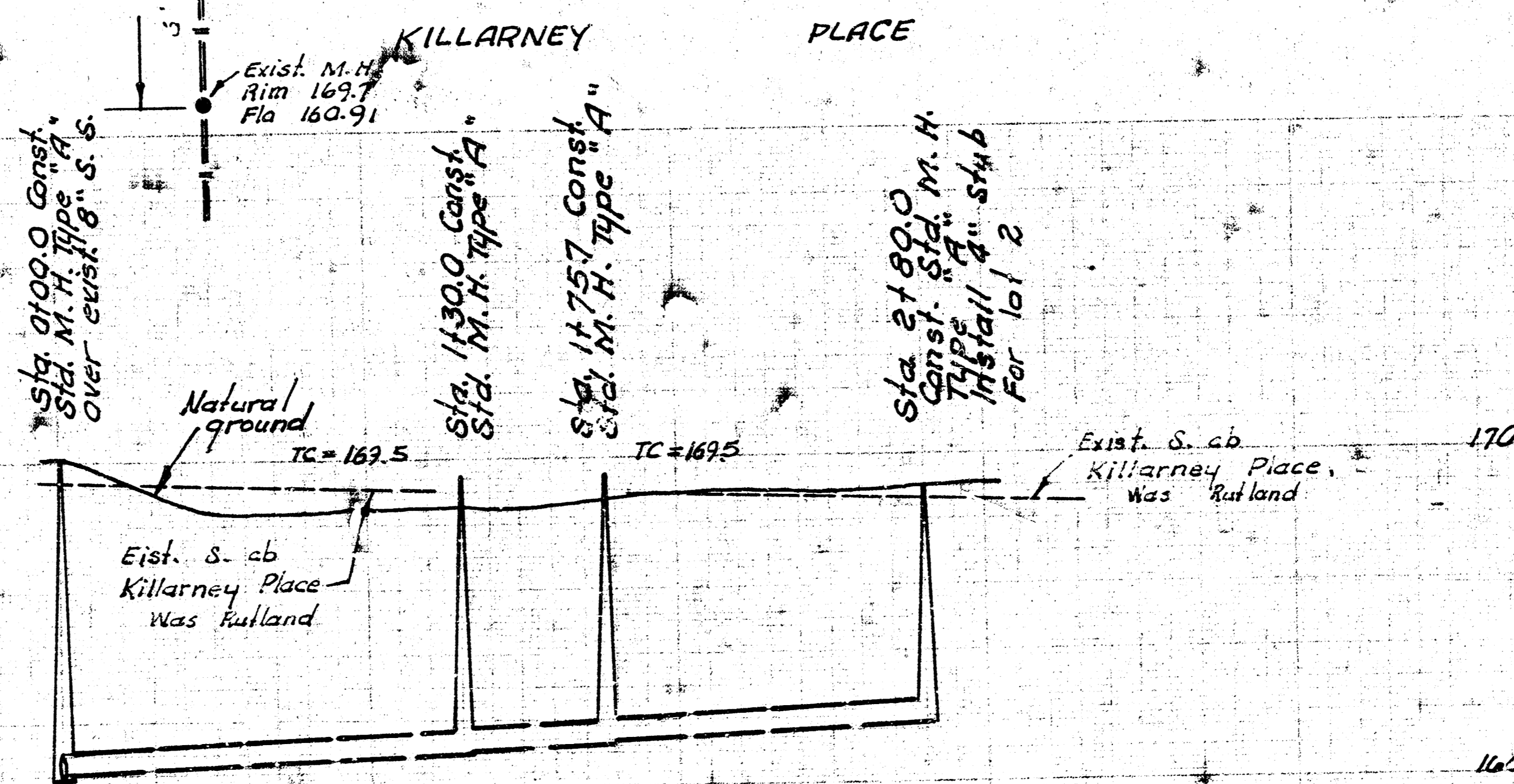
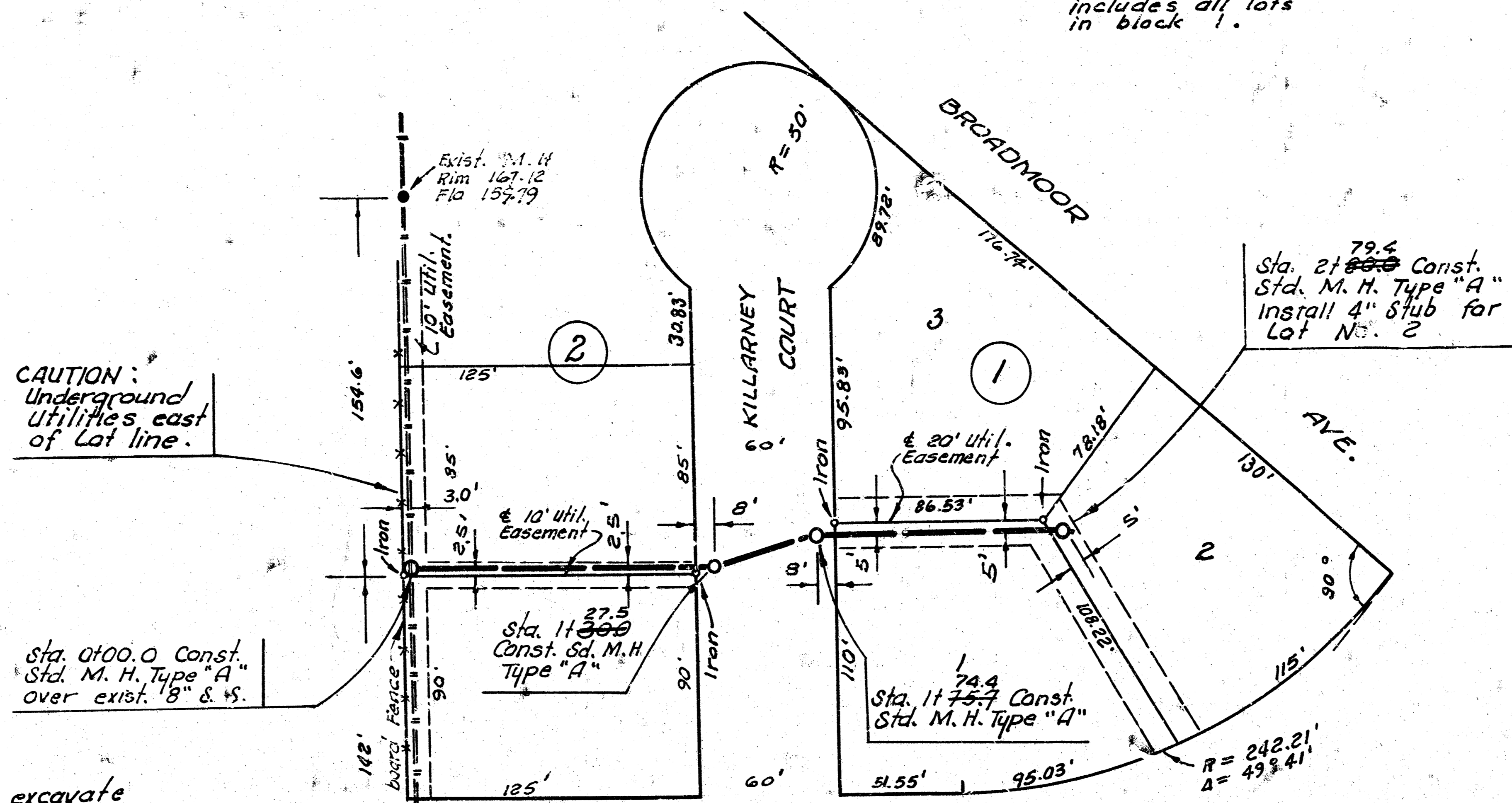
Plan Scale 1" = 40'
Profile Scale 1" = 40' Horz.
1" = 4' Vert.

NOTE:
Benefit district
includes all lots
in block 1.

CAUTION:
Underground
Utilities east
of Lot line.

Sta. 0+00.0 Const.
Std. M. H. Type "A"
over exist. 8" & 4".

NOTE:
Contractor is to excavate
at Sta. 0+00.0 prior to
Construction so field Engr.
can verify Pipe Flo Elev.



LAT. 20, MAIN 12, W. I. S.
CITY OF WICHITA, KANSAS
R. W. LINN — CITY ENGINEER
MAY 1974 PROJECT NO. DBK L574009

FINAL MEASUREMENTS
APRIL 7-8-79