

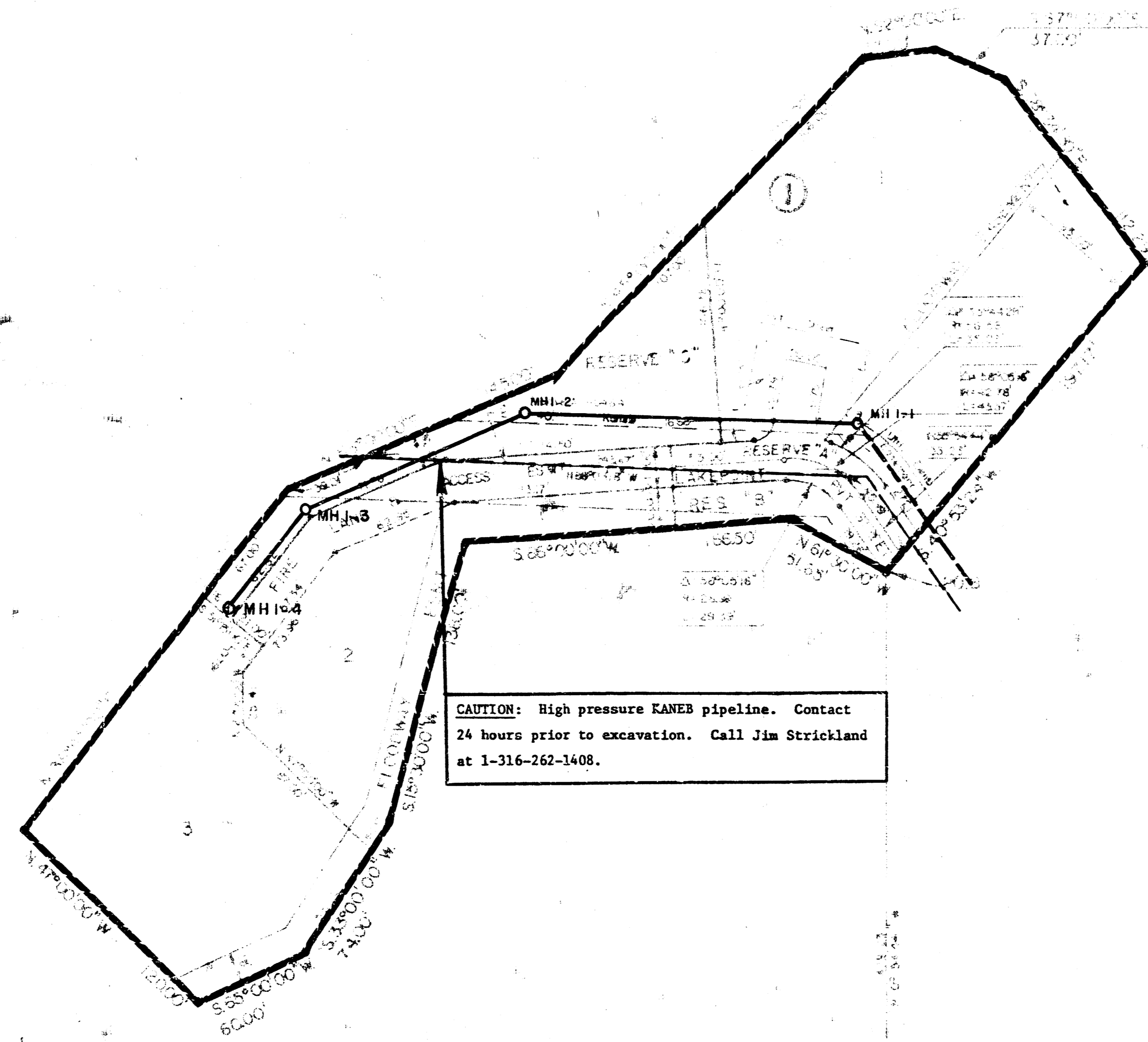
WAR INDUSTRY SEWER, LATERAL 28, MAIN 22 WOODSPRING SECOND ADDITION

**PROJECT NO.
468-76-245-81308-000-000-001**

CITY OF WICHITA, KANSAS
MIKE LINDEBAK, CITY ENGINEER
AUGUST 1983

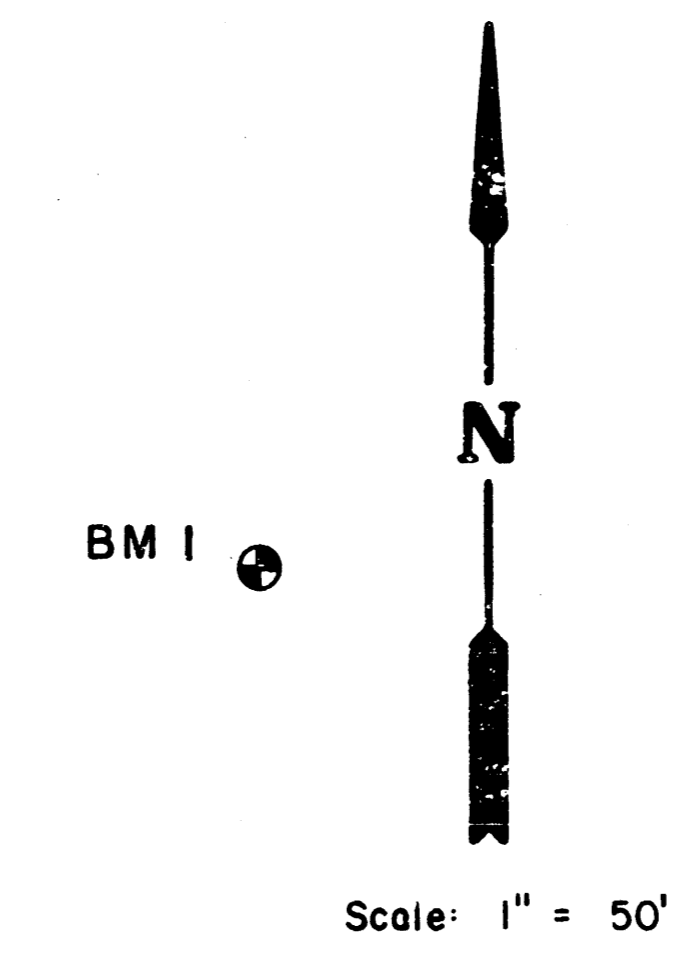
GENERAL NOTES

THE CONTRACTOR SHALL BE RESPONSIBLE FOR PRESEPPING PROPERTY IRONS. THE CONTRACTOR SHALL BE REQUIRED TO RE-ESTABLISH ANY PROPERTY IRONS WHICH ARE DAMAGED OR DESTROYED BY HIS CONSTRUCTION OPERATIONS. SUCH IRONS SHALL BE RE-ESTABLISHED BY A LICENSED LAND SURVEYOR OR A LICENSED PROFESSIONAL ENGINEER IN ACCORDANCE WITH STATE LAWS.



CAUTION: High pressure KANEB pipeline. Contact 24 hours prior to excavation. Call Jim Strickland at 1-316-262-1408.

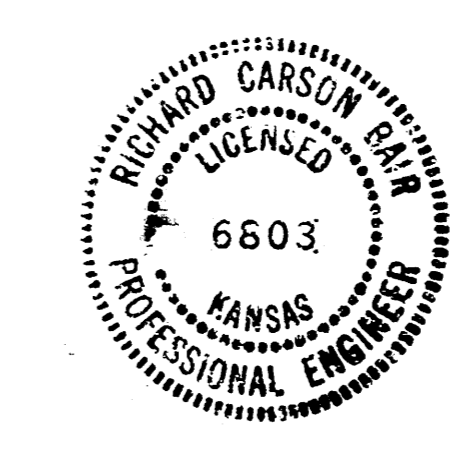
WOODSPRING B.M.'S
B.M. 1 Square cut on southeast corner of pond dam. Elev. 207.86
B.M. 2 Spike step in south face of KG&E 1/2" pole. Elev. 211.32



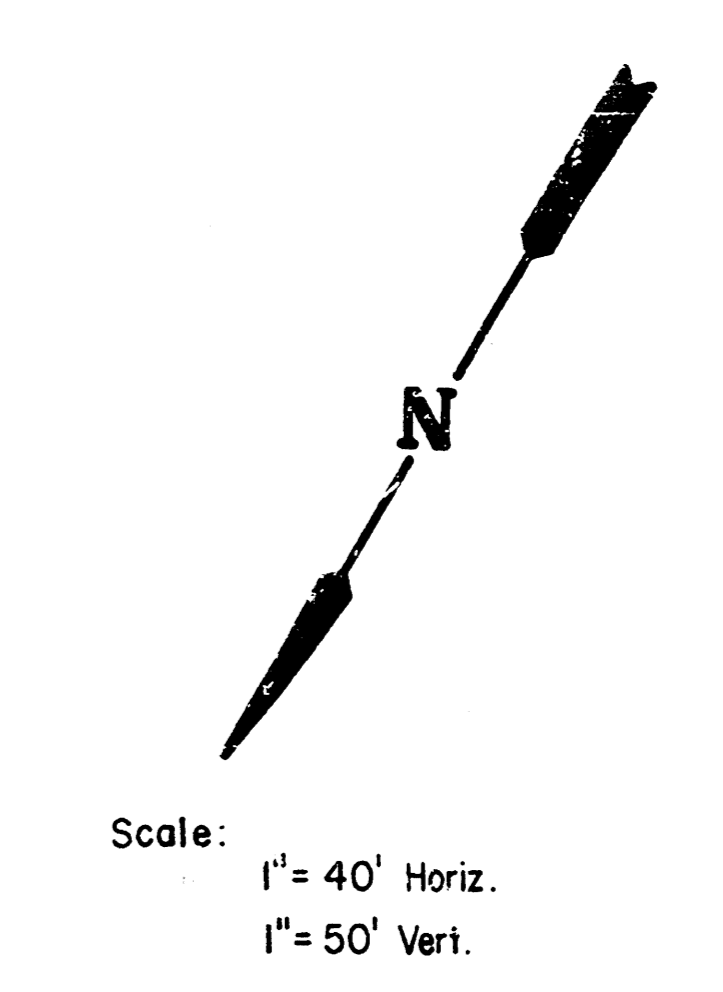
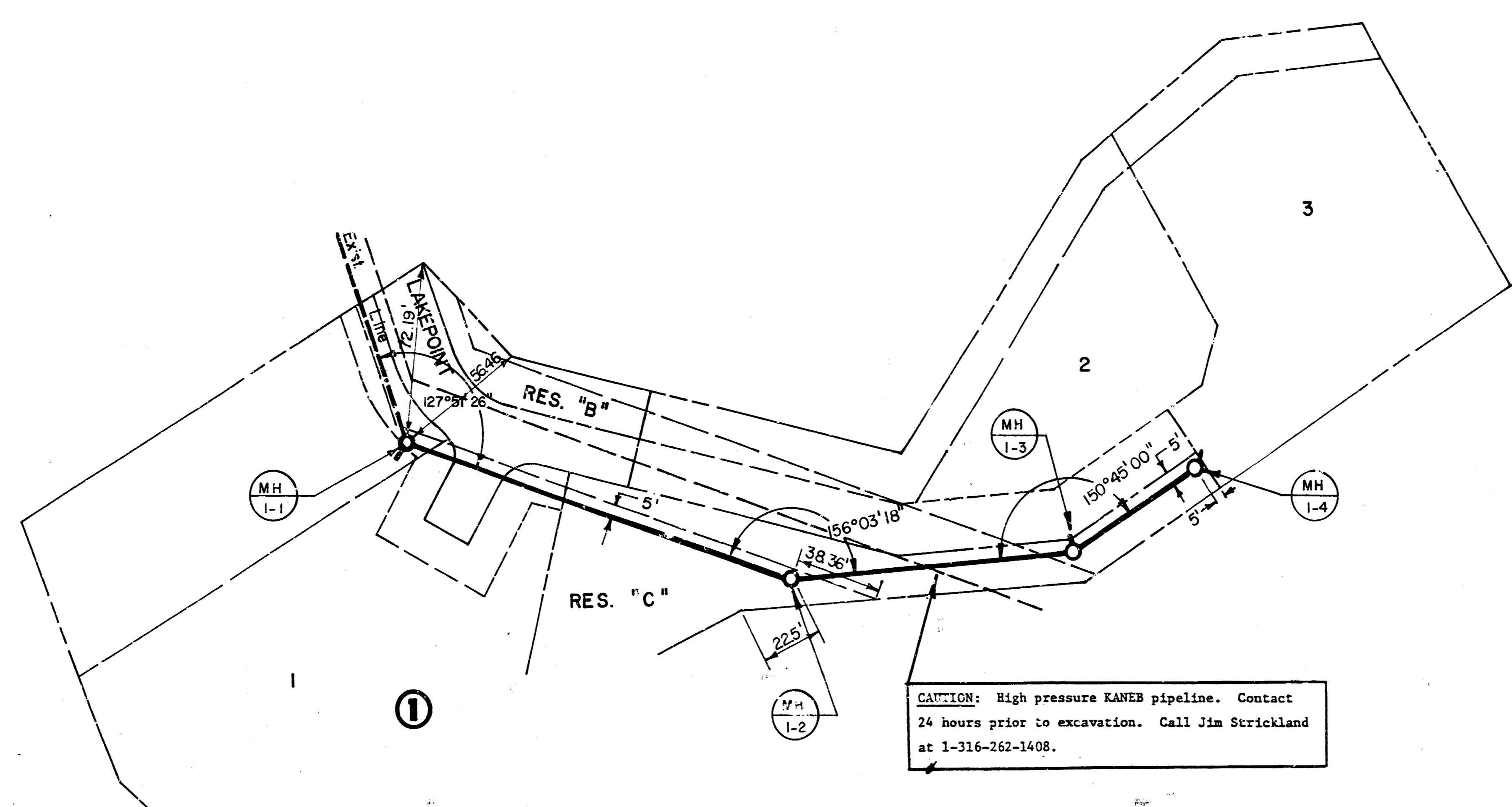
INDEX TO DRAWINGS	
SHEET NO.	DESCRIPTION
1	TITLE SHEET
2	LINE 1
3	MANHOLE DETAILS
4	FINAL PLAT

LEGEND
 - - - - - = Benefit District Boundary
 ———— = Proposed Sanitary Sewer
 - - - - - = Existing Sanitary Sewer

*As Built
J.L.L.
1-84*



	WOODSPRING SECOND ADD.	Design: RCB
	SANITARY SEWER EXTENSIONS	Drawn by: DLM Checked by: KHB Date: 1983 Job no:
MID-KANSAS ENGINEERING CONSULTANTS PA 240 NORTH ROCK ROAD SUITE 130 WICHITA, KANSAS 67206 682-6561		Sheet 1 of 4

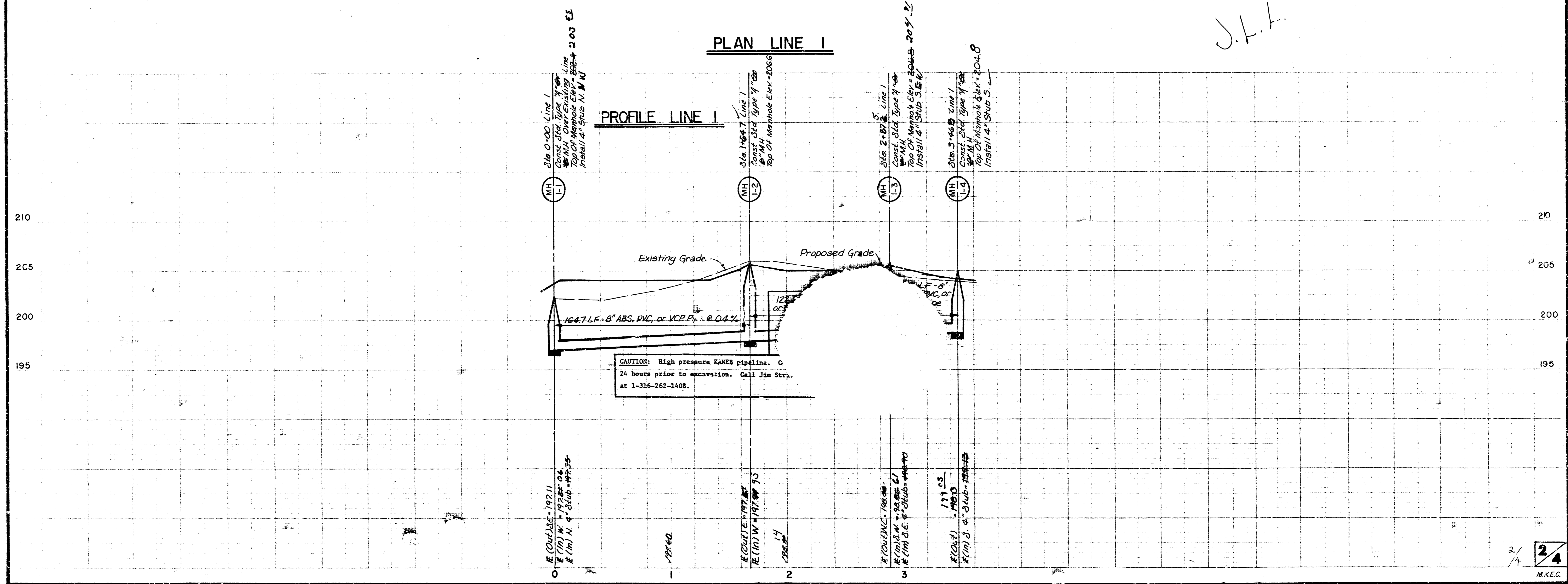


CAUTION: High pressure KANEX pipeline. Contact 24 hours prior to excavation. Call Jim Strickland at 1-316-262-1408.

*As Built
 1-89
 J.L.L.*

PLAN LINE 1

PROFILE LINE 1



SEWER APPURTENANCES DETAILS

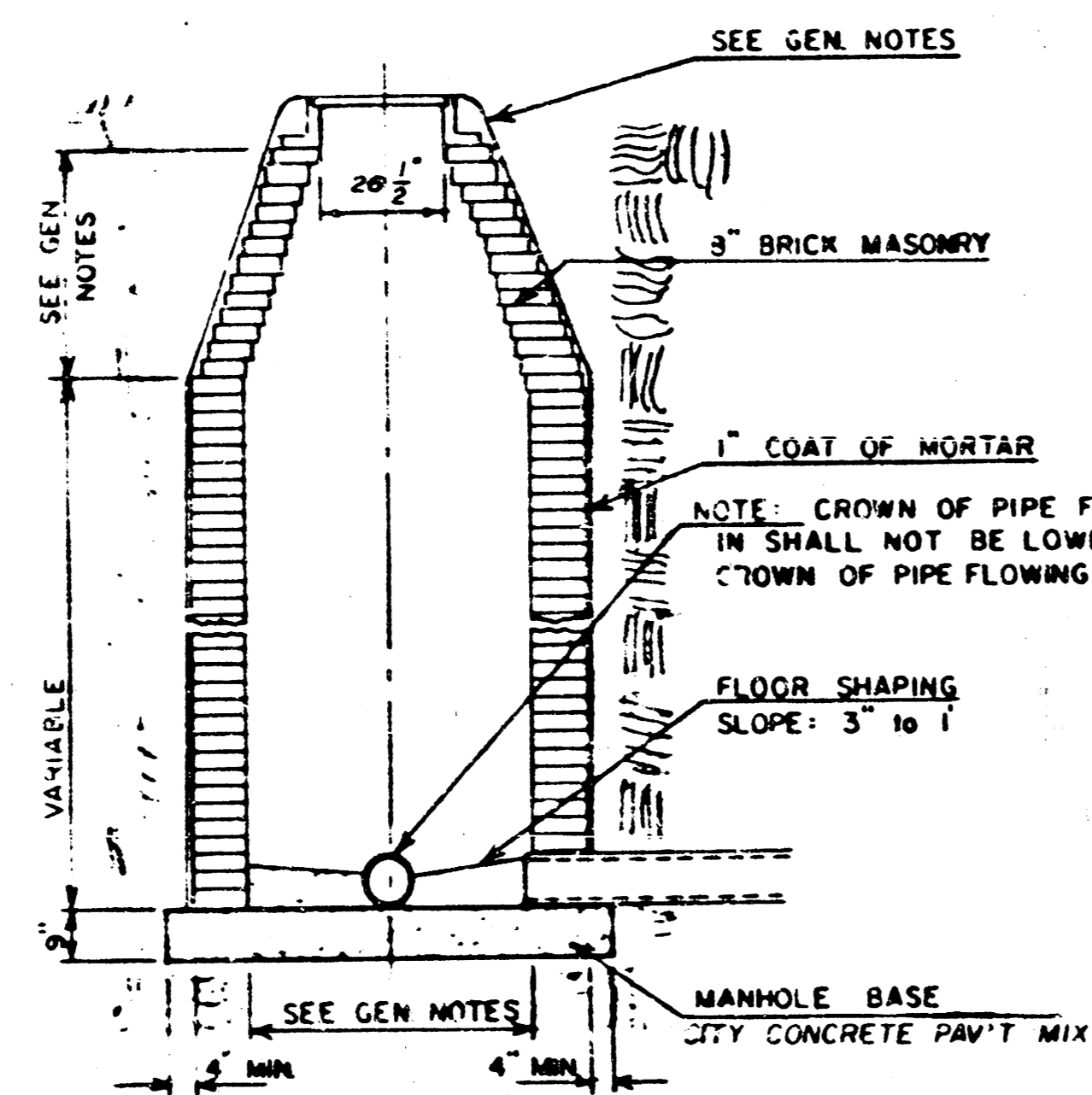
ADOPTED AS STANDARD DESIGN
BY

CITY of WICHITA, KANSAS

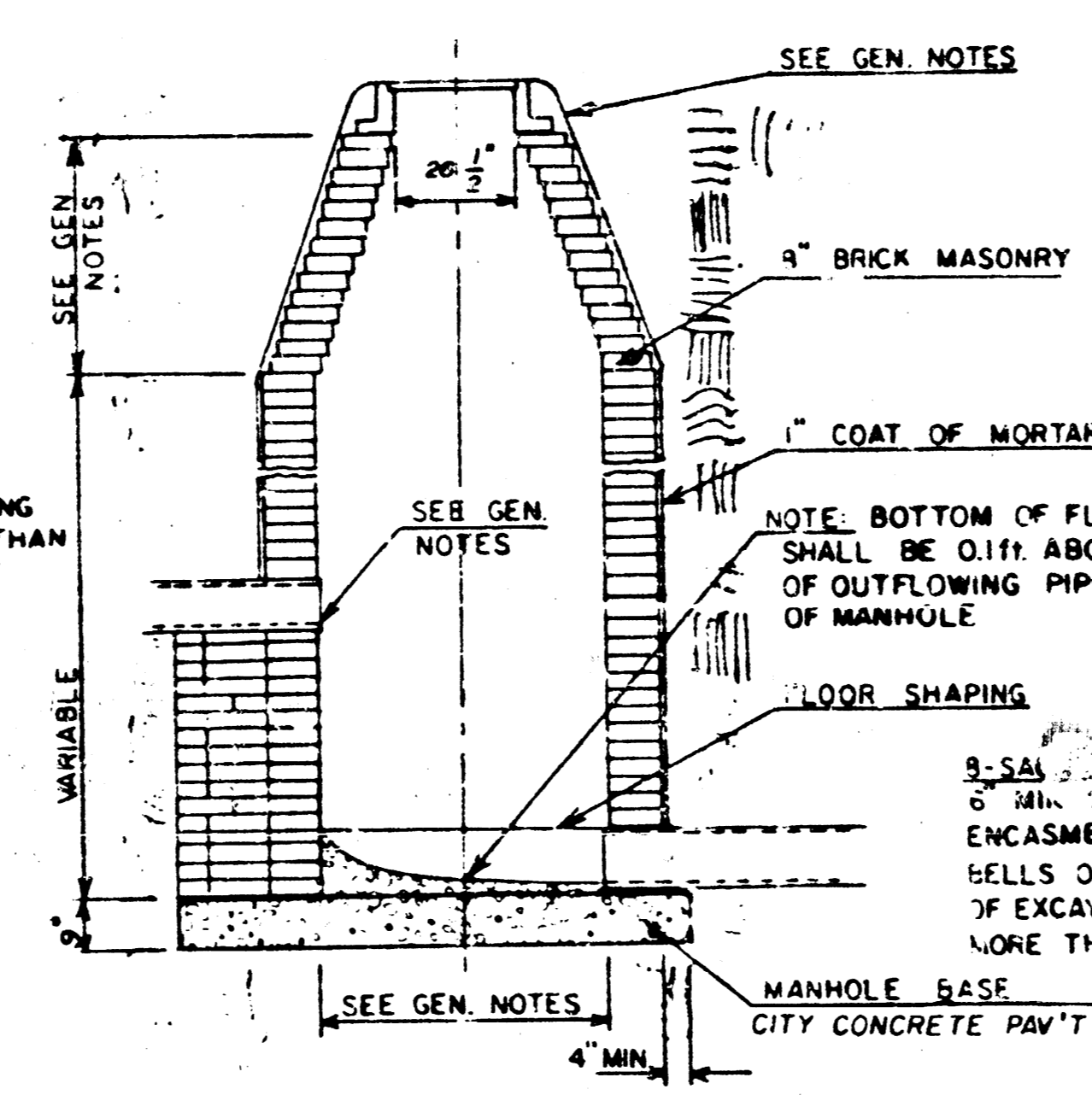
REVISED SEPTEMBER 1980
REVISED DECEMBER 1981

Manhole Number	North Coordinate	East Coordinate
1-1	10,360.3726	6970.0996
1-2	10,365.9631	6805.4772
1-3	10,326.0740	6691.8977
1-4	10,273.9597	6654.8871

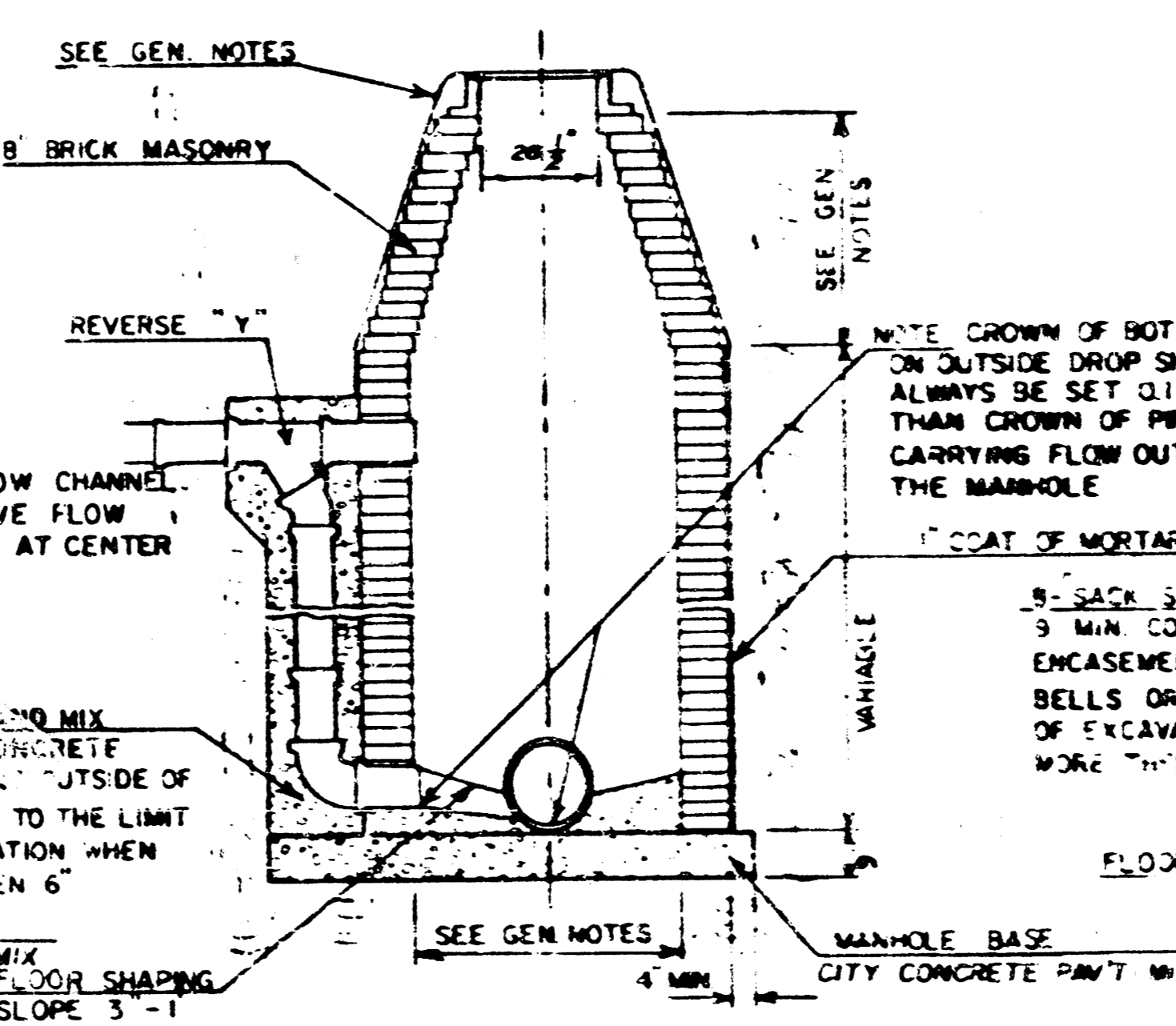
TYPE "A" MANHOLE



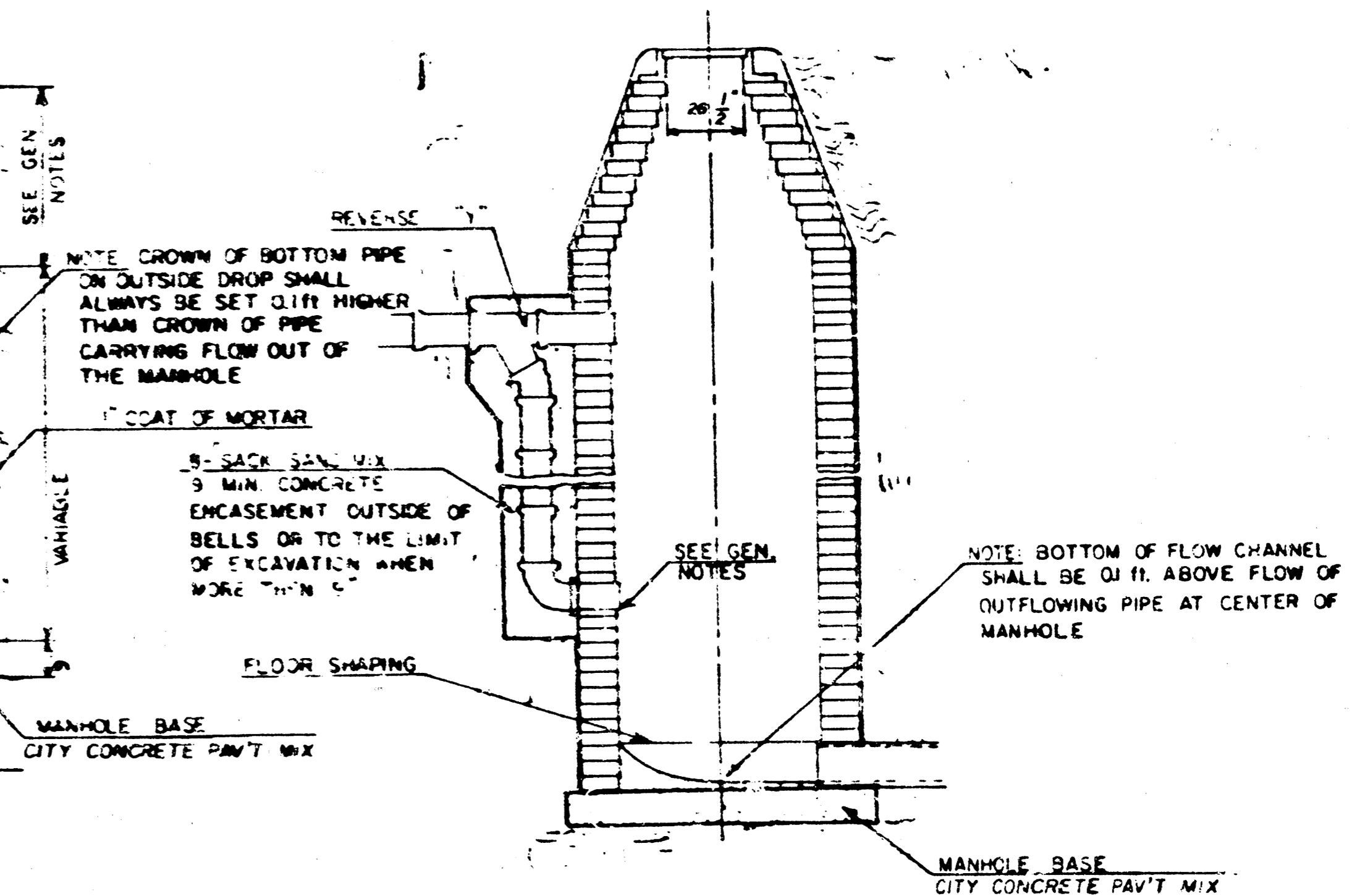
TYPE "A" INSIDE DROP MANHOLE



TYPE "A" OUTSIDE DROP MANHOLE



DETAIL OF OUTSIDE DROP
CONSTRUCTED ON EXISTING MANHOLE



GENERAL NOTES

- MORTAR USED IN MASONRY CONSTRUCTION SHALL CONTAIN 8 SACKS OF CEMENT PER CUBIC YARD. CONCRETE USED IN MANHOLE BASES SHALL CONFORM TO THE REQUIREMENTS OF CONCRETE FOR CONCRETE PAVEMENT CONSTRUCTION AS SPECIFIED IN THE CITY STANDARD PAVING SPECIFICATIONS USING CITY CONCRETE PAVEMENT MIX WITHOUT AIR ENTRAINING ADMIXTURE. MORTAR SHALL BE PLACED AROUND THE MANHOLE RING AS SHOWN ON THE DRAWINGS WHEN MANHOLES ARE CONSTRUCTED IN UNPAVED AREAS. TYPE "A" MANHOLES CAN BE USED ON SEWERS UP TO 16' IN DEPTH WHEN THE MANHOLE IS NOT LOCATED WITHIN PUBLIC STREET PAVEMENT. MANHOLES CONSTRUCTED WHERE PIPE SIZES ARE SMALLER THAN 24" SHALL HAVE AN INSIDE DIAMETER OF 4'. MANHOLES CONSTRUCTED WHERE PIPE SIZES ARE 24" OR LARGER SHALL HAVE AN INSIDE DIAMETER OF 5'. THE HEIGHT OF THE CORBELS ON 4' DIAMETER MANHOLES SHALL BE 4'. MANHOLES HAVING A DIAMETER OF 5' SHALL HAVE CORBELS 6' IN HEIGHT. COMPLETED MANHOLE SHALL BE WITHOUT LEAKS AND WATER TIGHT.
- REINFORCING STEEL SHALL BE INSTALLED IN THE MANHOLE BASES AND SHALL CONSIST OF NO. 4 BARS PLACED 6" CENTERS IN BOTH DIRECTIONS. THE MANHOLE BASE REINFORCEMENT SHALL BE PLACED 6" ABOVE THE BOTTOM OF THE MANHOLE BASE. ALL COSTS FOR FURNISHING AND INSTALLING REINFORCING STEEL SHALL BE INCLUDED IN THE UNIT PRICE BID FOR THE MANHOLE.
- OPENINGS SHALL BE CUT INTO THE MANHOLE WALL WHEN OUTSIDE DROPS ARE CONSTRUCTED ON EXISTING MANHOLES. SUCH OPENINGS CUT INTO EXISTING MANHOLES SHALL BE AS SMALL AS PRACTICAL TO FACILITATE INSTALLING AND GROUTING THE NEW PIPE IN PLACE. WATERSTOP GASKETS SHALL BE USED WITH P.V.C. AND A.B.S. COLLOIDITE PIPE. THE NEW PIPE SHALL BE GROUTED INTO THE OPENING USING AN APPROVED NONSHRINKING GROUT FOR THE FULL MANHOLE WALL THICKNESS. THE EXTERIOR OF THE COMPLETED CONNECTION SHALL BE SEALED WITH AN APPROVED BITUMINOUS COATING SUCH THAT THE CONNECTION WILL BE WATER TIGHT. FLOOR OF MANHOLE SHALL BE MODIFIED TO FORM NEW FLOW CHANNEL FOR THE NEW CONNECTION AS INDICATED BY THE DRAWING. THE VERTICAL DROP FROM THE LOWER PIPE ON SUCH OUTSIDE DROP CONNECTIONS SHALL NOT EXCEED 4' FOR INFLOWING PIPES SIZED 12" OR SMALLER AND 2' FOR INFLOWING PIPES SIZED LARGER THAN 12", EXCEPT THE CROWN OF THE LOWER PIPE SHALL NEVER BE SET BELOW THE CROWN OF ANY LARGER OUTFLOWING PIPE. THIS WORK, INCLUDING MODIFICATION OF MANHOLE FLOOR, SHALL BE PAID FOR AT THE UNIT PRICE BID FOR OUTSIDE DROP STACK CONSTRUCTED ON EXISTING MANHOLE.
- THE FLOORS OF ALL MANHOLES SHALL BE SHAPED WITH FLOW CHANNELS SUCH THAT THE MANHOLES WILL BE SELF-CLEANING AND FREE OF AREAS WHERE SOLUTION COULD BE DEPOSITED AS SEWAGE FLOWS THROUGH THE MANHOLE FROM ALL INLET PIPES TO THE OUTLET PIPE. FLOW CHANNELS SHALL BE FORMED TO MATCH THE BOTTOM HALVES OF THE INFLOWING PIPES AND THE OUTFLOWING PIPE AS SHOWN BY THE DRAWINGS EXCEPT FOR INSIDE DROP MANHOLES. FLOW CHANNELS FOR INSIDE DROP MANHOLES SHALL BE CONSTRUCTED AS INDICATED BY THE DRAWING. MANHOLE FLOORS SHALL HAVE SLOPES OF 3 INCHES PER FOOT IN THE AREAS OUTSIDE OF THE FLOW CHANNELS SLOPED TOWARD THE FLOW CHANNELS. PIPES LAID THROUGH MANHOLES SHALL HAVE THE TOP HALF REMOVED TO NEAT LINES FOR THE FULL INSIDE DIAMETER OF THE MANHOLE. MANHOLE FLOORS SHALL THEN BE SHAPED AROUND THE BOTTOM HALF OF THE PIPE WHICH FORMS THE FLOW CHANNEL.
- PIPES INSTALLED WITHIN THE EXCAVATION MADE FOR THE MANHOLE SHALL BE CRADLED WITH CONCRETE TO THE LIMITS OF THE MANHOLE EXCAVATION. WHEN CLAY PIPE IS USED, THE CRADLE SHALL EXTEND TO THE FIRST JOINT OUTSIDE THE MANHOLE. THE CRADLE SHALL BE TERMINATED AT THE CLAY PIPE JOINT IN A MANNER WHICH WILL MAINTAIN THE FLEXIBILITY OF THE JOINT. COST OF THE CRADLE WITHIN MANHOLE EXCAVATION OR TO CLAY PIPE JOINTS ADJACENT TO MANHOLE SHALL BE INCLUDED IN THE UNIT PRICE BID FOR THE MANHOLE.
- MANHOLE COVER CASTINGS AND MANHOLE FRAME CASTINGS SHALL CONFORM TO THE REQUIREMENTS AS INDICATED IN THE STANDARD SPECIFICATIONS AND AS SHOWN IN THE STANDARD DETAIL DRAWING.
- THE VERTICAL DROP IN INSIDE DROP MANHOLES SHALL NOT EXCEED 4' FOR INFLOWING PIPES SIZED 12" OR SMALLER AND 2' FOR INFLOWING PIPES LARGER THAN 12". THE CROWNS OF INFLOWING PIPES SHALL NEVER BE SET LOWER THAN THE CROWN OF THE OUTFLOWING PIPE.
- STANDARD MANHOLES TYPE "A" AND STANDARD INSIDE DROP MANHOLES TYPE "A" SHALL BE BID AS STANDARD MANHOLES FOR THE TYPE AND DIAMETER INDICATED. OUTSIDE DROP MANHOLES TYPE "A" SHALL BE BID AS STANDARD OUTSIDE DROP MANHOLES FOR THE TYPE AND DIAMETER INDICATED. ALL MANHOLE DIAMETERS WILL BE 4' UNLESS INDICATED OTHERWISE.

FINAL PLAT OF WOODSPRING SECOND ADDITION

AN ADDITION TO WICHITA, SEDGWICK COUNTY, KANSAS

I, Allen D. Lowry, a Land Surveyor in Kansas, do hereby certify that I have been in responsible charge of surveying and platting of "Woodspring Second Addition", an addition to Wichita, Sedgwick County, Kansas, into lots, blocks, and reserves, the same being accurately set forth in the accompanying plat and described as follows:

A tract of land in the northeast quarter of Section 5, Township 27 south, Range 2 east of the 10th P.M., Sedgwick County, Kansas, described as:

Beginning at the northeast corner of Lot 1, Block 3, "Woodspring", an addition to Wichita, Sedgwick County, Kansas, said point also being 1659.36 feet west and 479.23 feet north of the southeast corner of northeast quarter of said Section 5, thence N 61° 30' 00" W, 51.65 feet; thence S 86° 00' 00" W, 164.50 feet; thence S 15° 30' 00" W, 118.00 feet; thence S 33° 00' 00" W, 74.00 feet; thence S 65° 00' 00" W, 60.00 feet; thence N 47° 00' 00" W, 120.00 feet; thence N 38° 45' 00" E, 212.00 feet; thence N 68° 00' 00" E, 145.00 feet; thence N 45° 00' 00" E, 215.00 feet; thence N 82° 00' 30" E, 37.00 feet; thence S 67° 00' 00" E, 37.00 feet; thence S 38° 34' 30" E, 112.29 feet to the north corner of Lot 8, Block 2, "Woodspring"; thence south westerly along the "Woodspring" boundary bearing S 40° 53' 24" W, 197.17 feet to the point of beginning, containing 1.84 acres, more or less.

I hereby certify that the details on this plat are correct to the best of my knowledge and belief this 28 day of July, 1983.

Allen D. Lowry
Allen D. Lowry, R.L.S.
Mid-Kansas Engineering Consultants, P.A.
240 North Rock Road, Suite 130
Wichita, Kansas 67206



This plat approved and all dedications shown hereon, if any, accepted by the City Commission of the City of Wichita, Kansas this 9th day of AUGUST, 1983.

Margalee Wright, Mayor
Donald C. Gierck, City Clerk

This plat of "Woodspring Second Addition" has been submitted to and approved by the Wichita-Sedgwick County Metropolitan Area Planning Commission, Wichita, Kansas.

Dated this 30th day of June, 1983.
Wichita-Sedgwick County Metropolitan Area Planning Commission
David Bayouth, Chairman
Robert A. Lakin, Secretary

This plat approved and all dedications shown hereon, if any, accepted by the Board of County Commissioners of Sedgwick County, Kansas, this 2nd day of AUGUST, 1983.

Jack Spratt, Chairman
Donald E. Gragg, Commissioner
Tom Scott, Commissioner
Attest: *Dorothy K. White*, County Clerk

Entered on transfer record this 3rd day of AUGUST, 1983. #648618

Dorothy K. White, County Clerk

STATE OF KANSAS
COUNTY OF SEDGWICK

This is to certify that this instrument was filed for record in the Register of Deeds Office at 2:30 P.M. on the 23rd day of AUGUST, 1983.

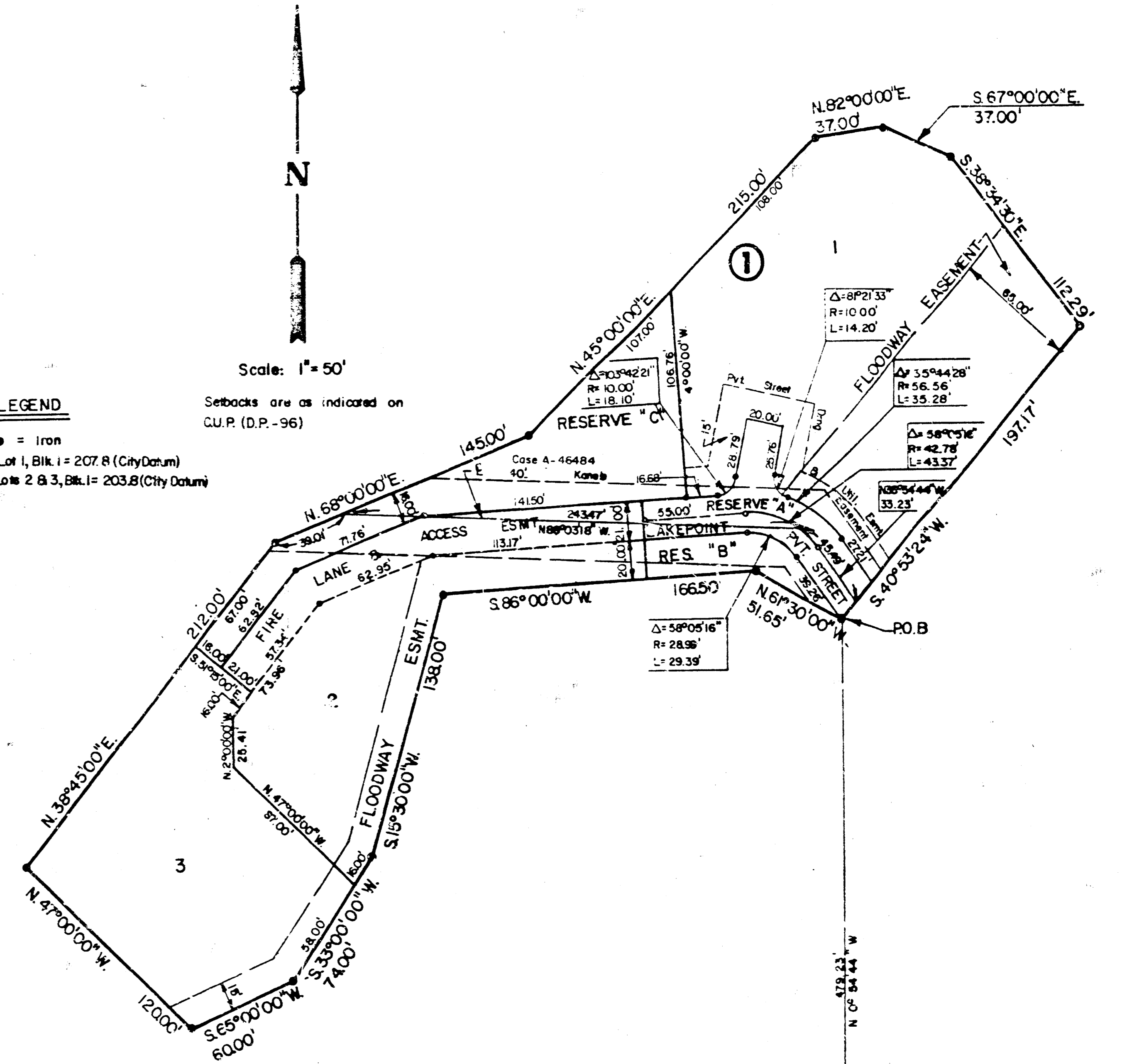
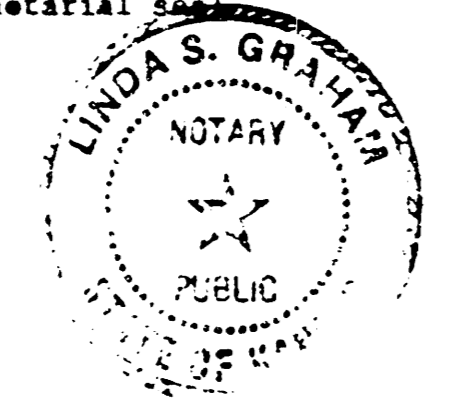
Bette F. McCart, Register of Deeds
Pat Kettler, Deputy

Know all men by these presents that we the undersigned property owners of the land as above set forth in the Land Surveyor's Certificate have caused the same to be surveyed and platted into lots, a block, and reserves, the same to be known as "Woodspring Second Addition", an addition to Wichita, Sedgwick County, Kansas. Easements for the construction and maintenance of public utilities, as indicated on the accompanying plat, are hereby granted to the City of Wichita. Reserves are platted for construction and maintenance of public utilities and drainage. Reserve A is platted for a private drive. Reserve B is platted for a private street easement. Reserves shall be owned and maintained by the Woodspring Homeowners Association. The floodway easement shall be the responsibility of the individual lot owners. Provided further, that no structure shall be constructed on or within said floodway easement, nor shall any fill, change of grade, creation of channel or other work be carried on without the permission of the Wichita-Valley Center Flood Control Office or their successors of office. Minimum pad elevation for Lot 1, Block 1 shall be 207.80 and Lots 2 and 3, Block 1 shall be 203.80. City of Wichita Datum. Building setbacks shall be in accordance with the Tallgrass Community Unit Plan (D.P.-96) on file with the Wichita-Sedgwick County Metropolitan Area Planning Department Office.

Tallgrass Company, a partnership
By: *William F. Binter*, Managing Partner

STATE OF KANSAS
COUNTY OF SEDGWICK
Be it remembered that on this 27th day of July, 1983, before me, a Notary Public in and for said state and county, came Tallgrass Company, a partnership, by William F. Binter, Managing Partner, to me personally known to be the same person who executed the foregoing instrument of writing and duly acknowledged the execution of the same. In testimony whereof I have hereunto set my hand and affixed my notarial seal the day and year above written.

Linda S. Graham, Notary Public
Linda S. Graham
My Appointment Expires: 2-7-86



20.00



Anticipate Comments F 603 Pg 910-912