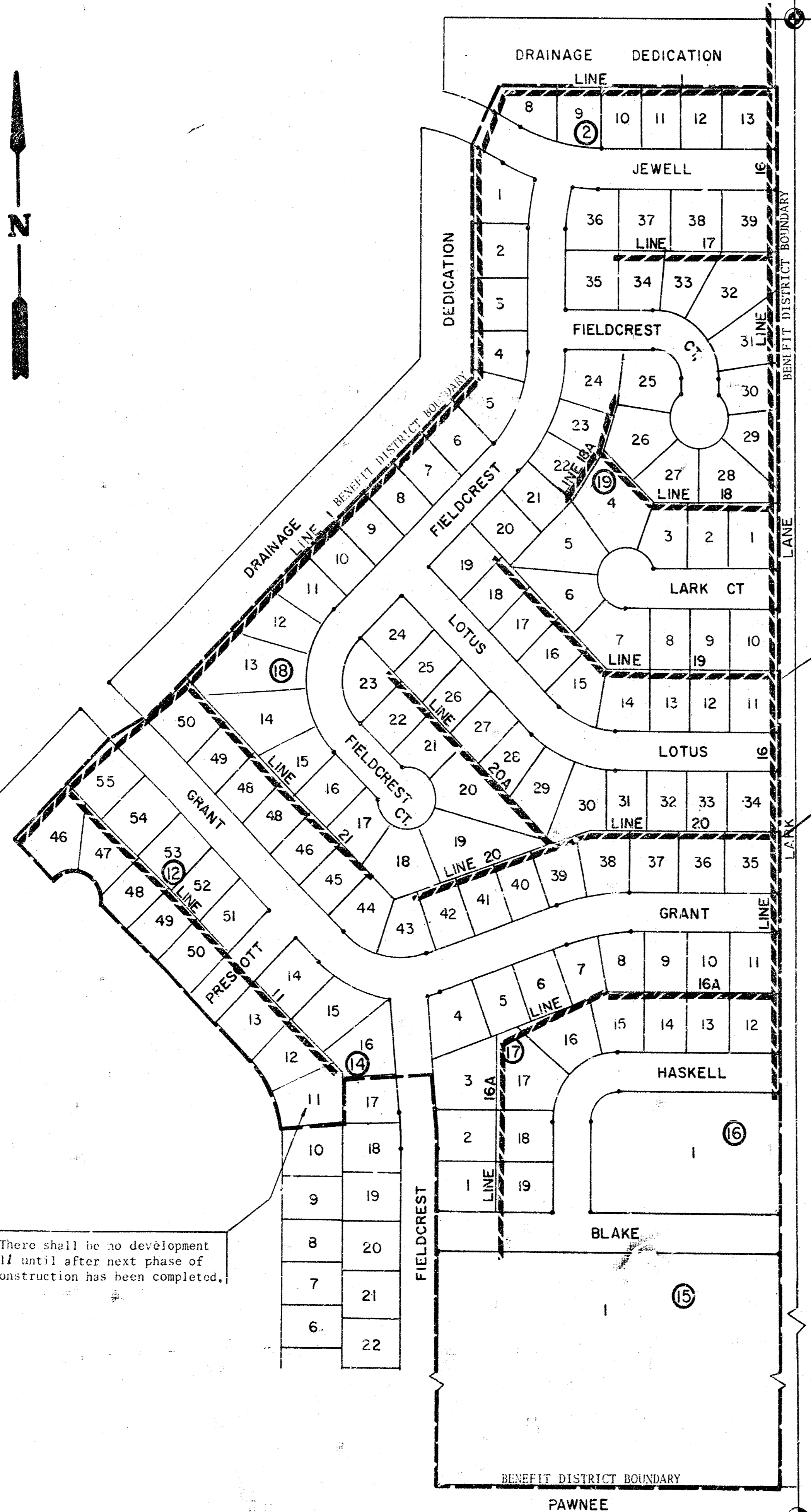


# LATERAL 1, MAIN 13, S.W. INTERCEPTOR

PROJECT NO.

468-76-245-80941-000-000-001

CITY OF WICHITA, KANSAS  
DEAN SELLERS, ACTING CITY ENGINEER



BENCH MARK - Railroad spike  
in west face of power pole,  
east side of Lark Lane,  
1320 ± north of Pawnee,  
Elev. 144.35'

NOTE: FIELD ENGINEER SHALL SET TOPS OF MANHOLES TO MATCH PROPOSED FINISHED GRADE AS DETERMINED BY THE DEVELOPER. RISERS AND ADDITIONAL STUBS SHALL BE INSTALLED ON THIS PROJECT TO SERVE INDIVIDUAL LOTS WHEN ORDERED BY THE FIELD ENGINEER. RISER CONSTRUCTION SHALL CONFORM TO THE REQUIREMENTS AS SHOWN ON STANDARD RISER DETAIL SHEET. LOCATIONS OF THE ENDS OF THE RISERS SHALL BE MARKED BY FASTENING GREEN PLASTIC COLORED TAPE TO THE END OF THE RISER AND BROUGHT TO THE GROUND SURFACE AS THE EXCAVATION IS BACKFILLED SUCH THAT THE COLORED TAPE WILL BE VISIBLE WHEN THE PROJECT IS COMPLETED. ALL RISERS SHALL BE CONSTRUCTED USING S.D.R. 35.5 A.B.S. OR P.V.C. PIPE. ELEVATIONS OF STUBS AND TOPS OF RISERS SHALL BE SUCH THAT WILL FACILITATE CONNECTION OF BASEMENT DRAINS WHEN THESE LOTS ARE DEVELOPED.

NOTE: PIPE USED ON THIS PROJECT MAY BE EITHER A.B.S. COMPOSITE, P.V.C., OR CLAY, EXCEPT THAT ONLY ONE OF THESE TYPES MAY BE USED.

NOTE: There shall be no development on Lot 11 until after next phase of Sewer Construction has been completed.

*As Built  
3-81  
Jed*

INDEX TO DRAWINGS

SHEET NO.	DESCRIPTION
1	TITLE SHEET
2-10	PLAN & PROFILE
11-12	DETAILS
13-14	PLATS



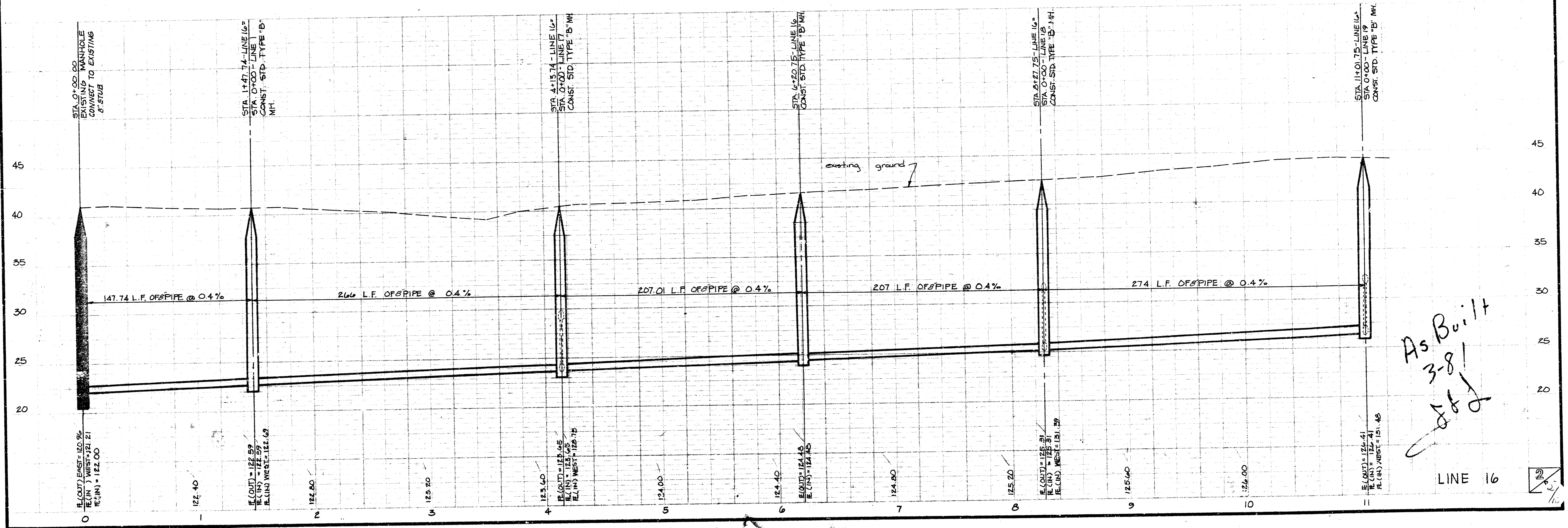
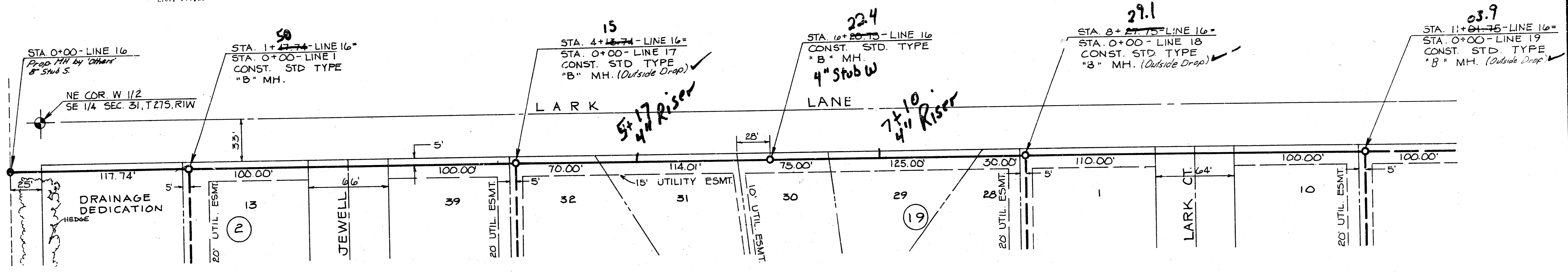
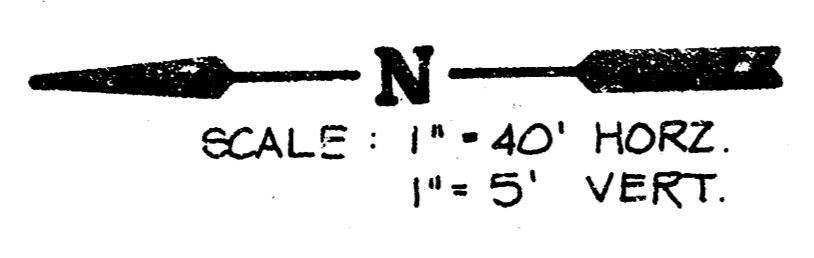
Van Doren - Hazard - Stallings

Architects • Engineers • Planners  
Topeka Wichita Minneapolis

Sheet 1  
of 14

PROJECT NO.  
468-76-245-80941-000-000-001

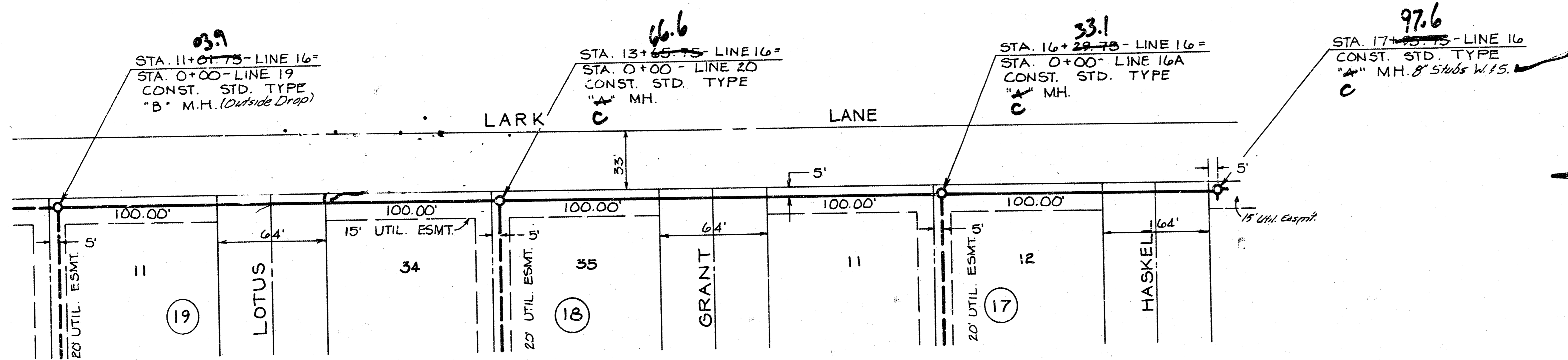
BENCH MARK - Railroad spike  
in west face of power pole,  
east side of Lark Lane.  
1320' north of Pawnee.  
Elev. 144.35'



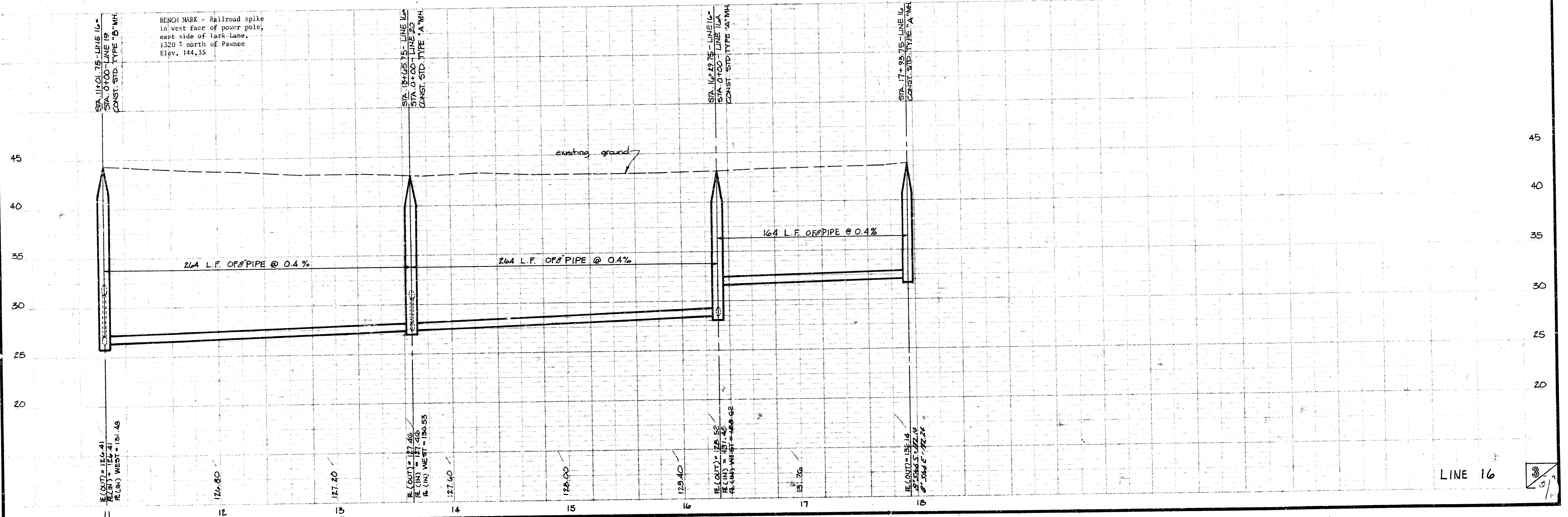
As Built  
3-81  
[Signature]

LINE 16

PROJECT NO.  
468-76-245-80941-000-000-001

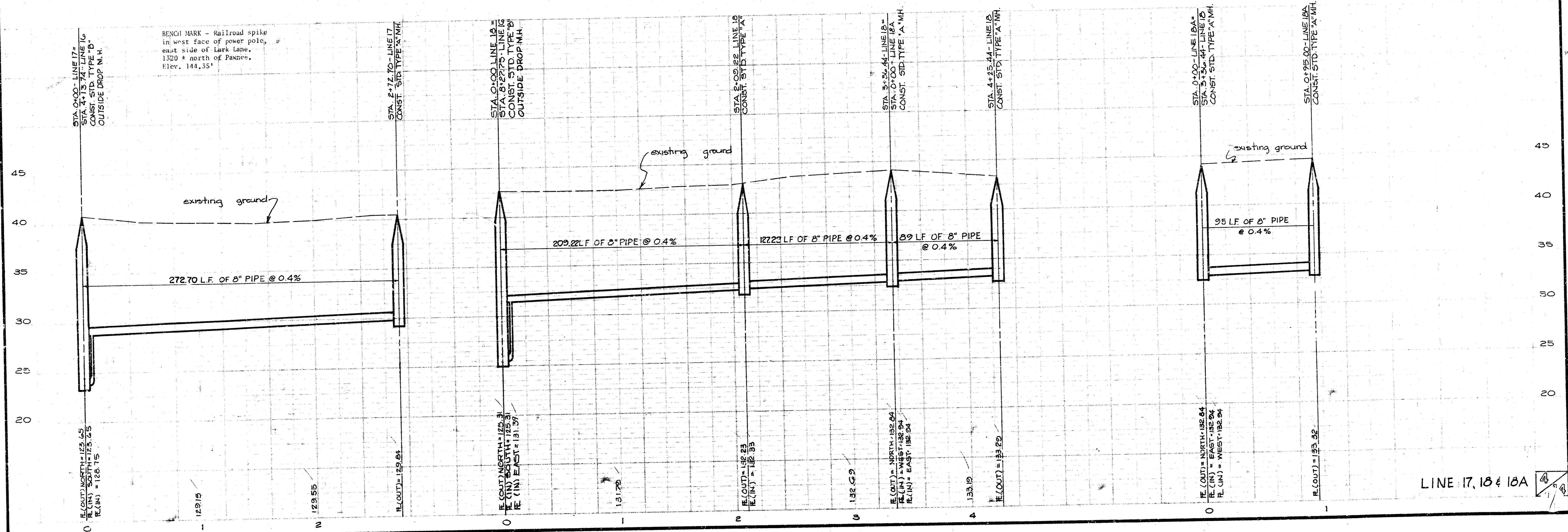
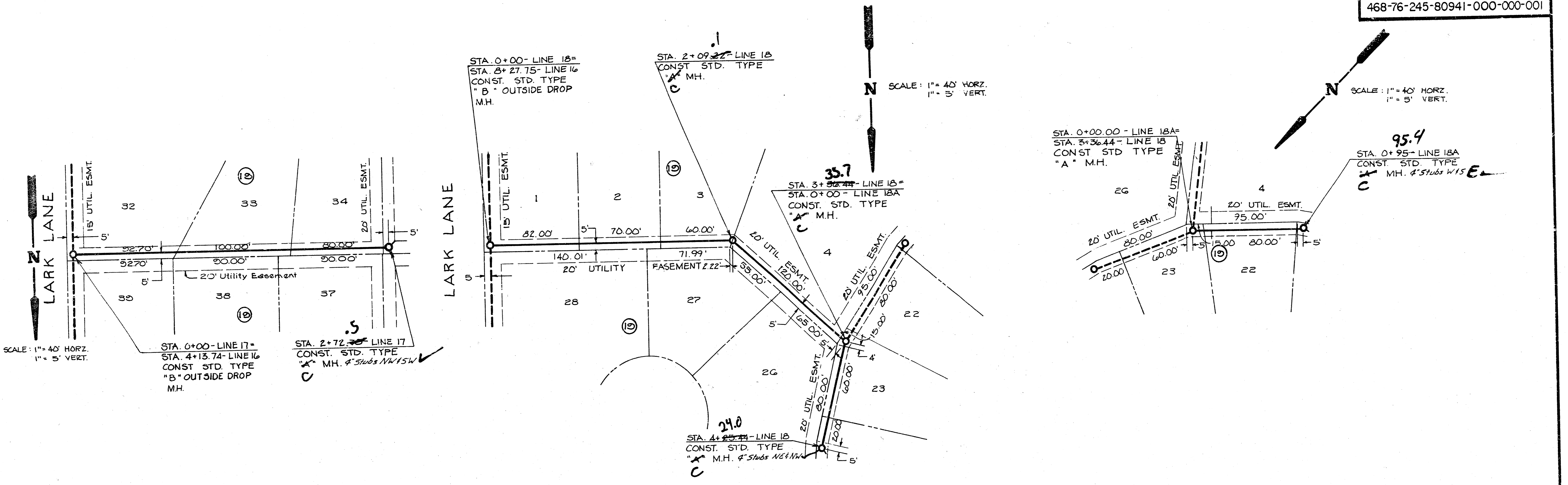


**N**  
SCALE: 1" = 40' HORZ.  
1" = 5' VERT.



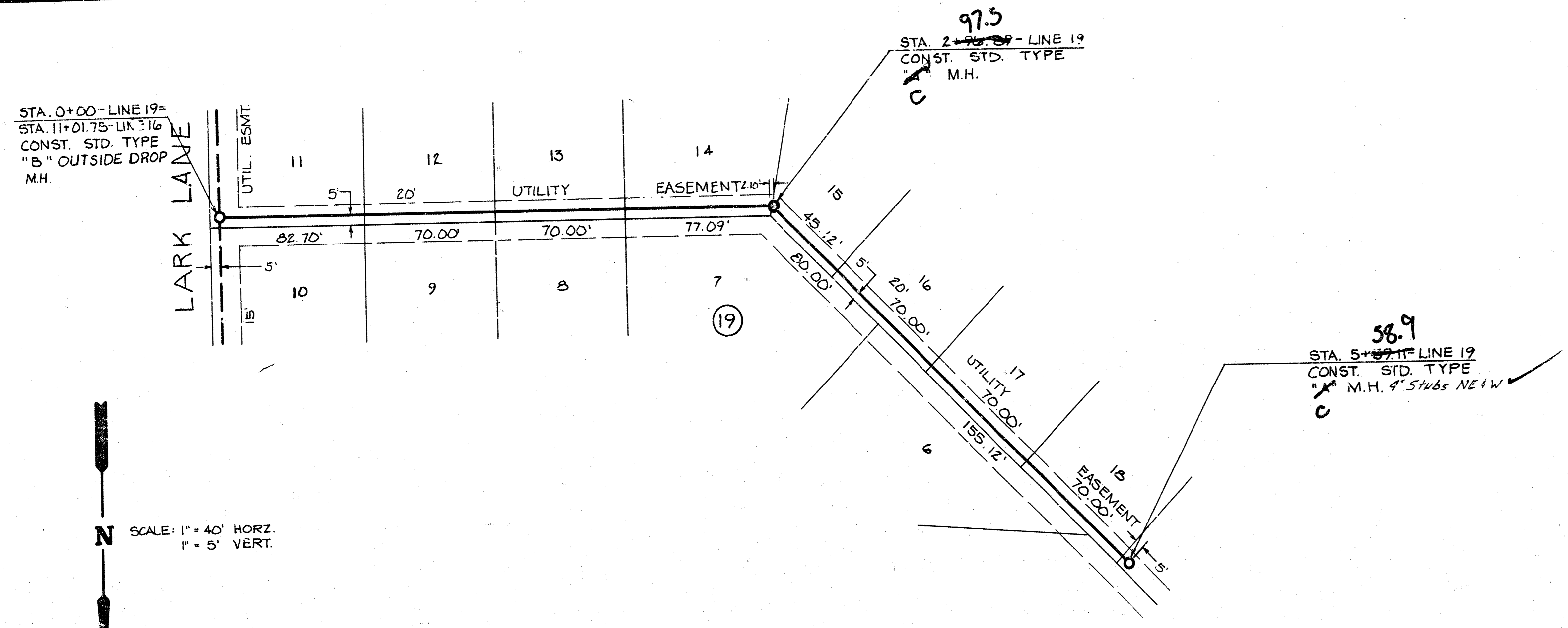
LINE 16

PROJECT NO.  
468-76-245-80941-000-000-001

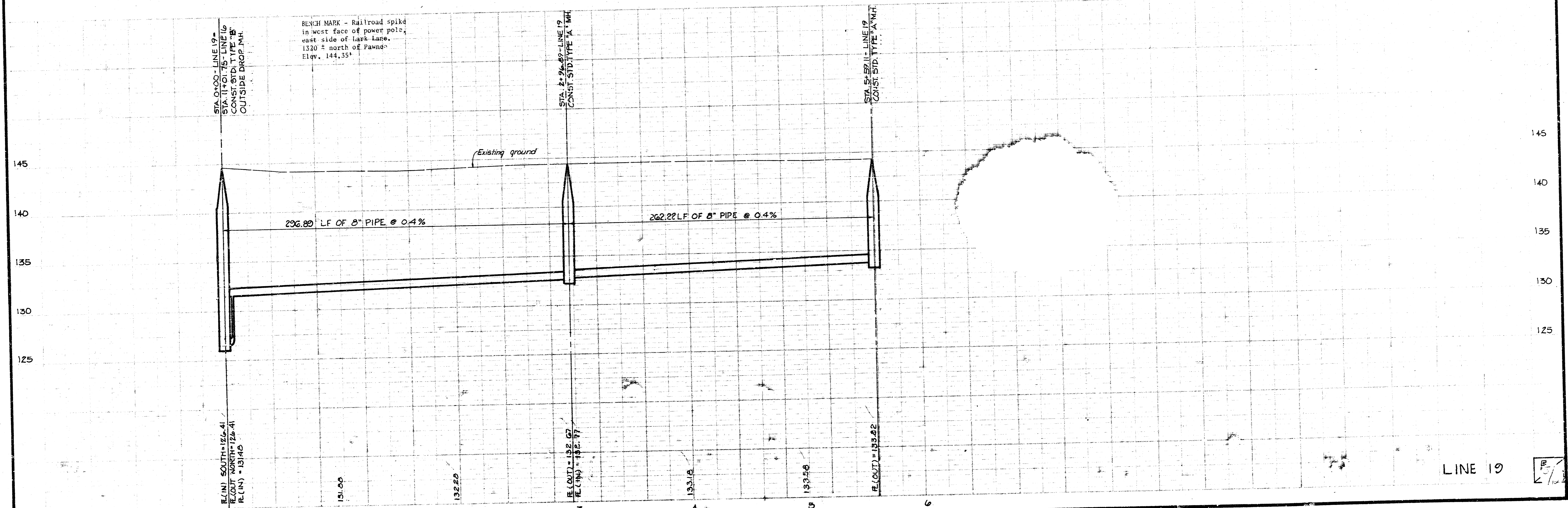


LINE 17, 18 & 18A

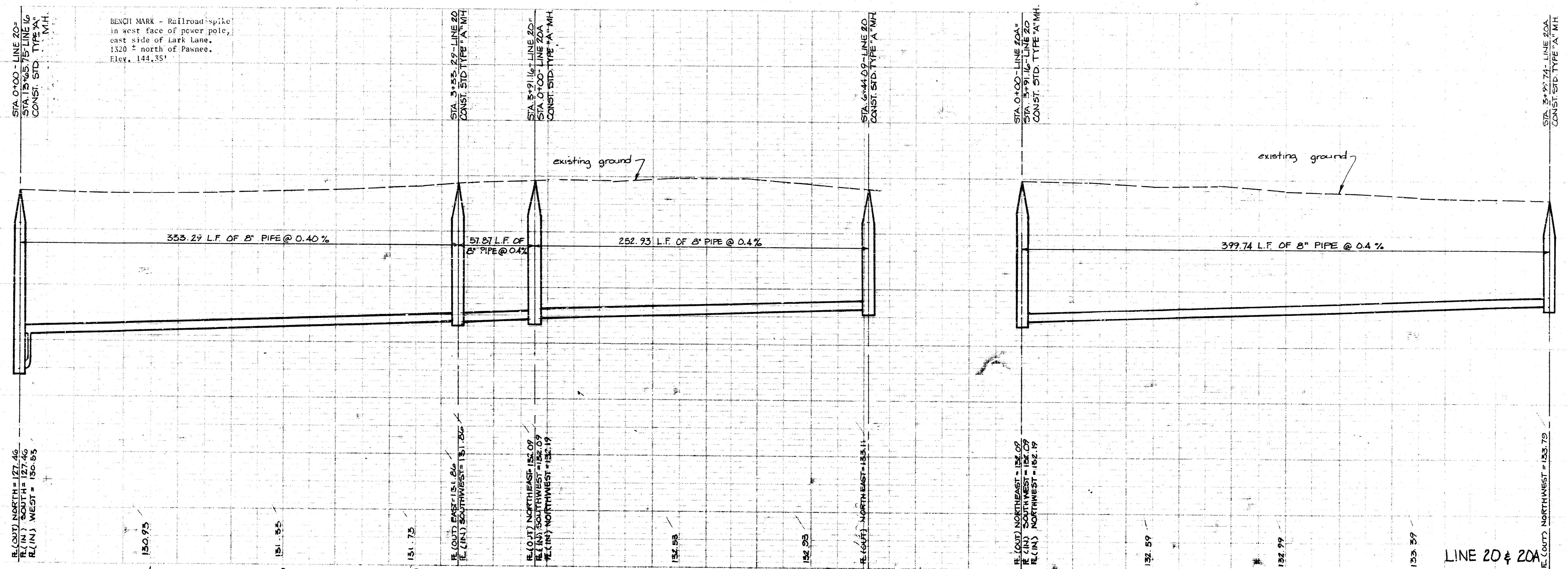
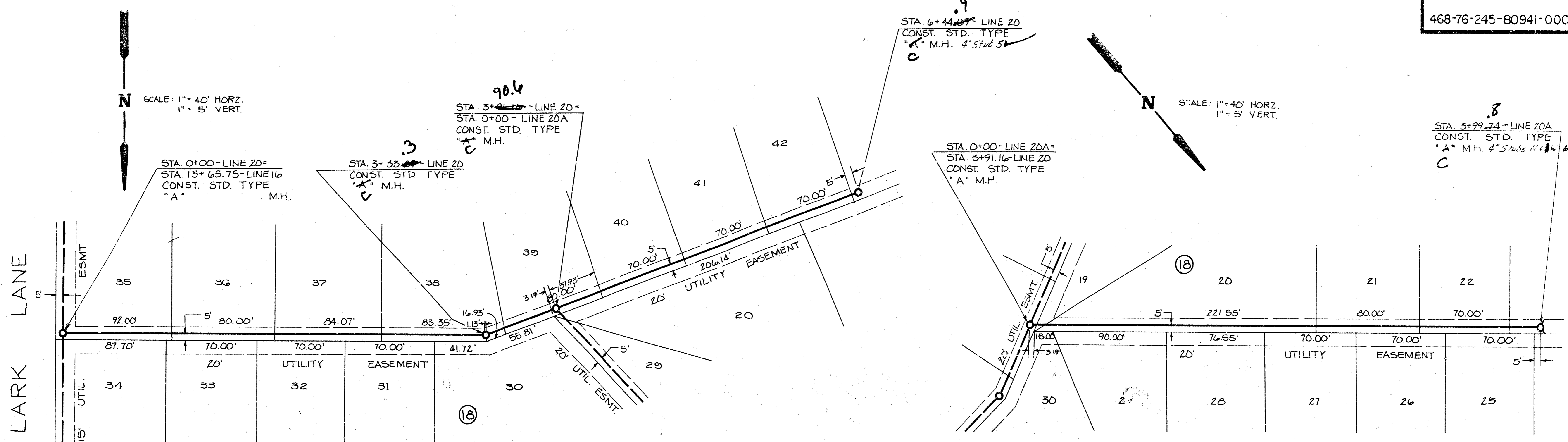
PROJECT NO.  
468-76-245-80941-000-000-001



N  
SCALE: 1" = 40' HORIZ.  
1" = 5' VERT.



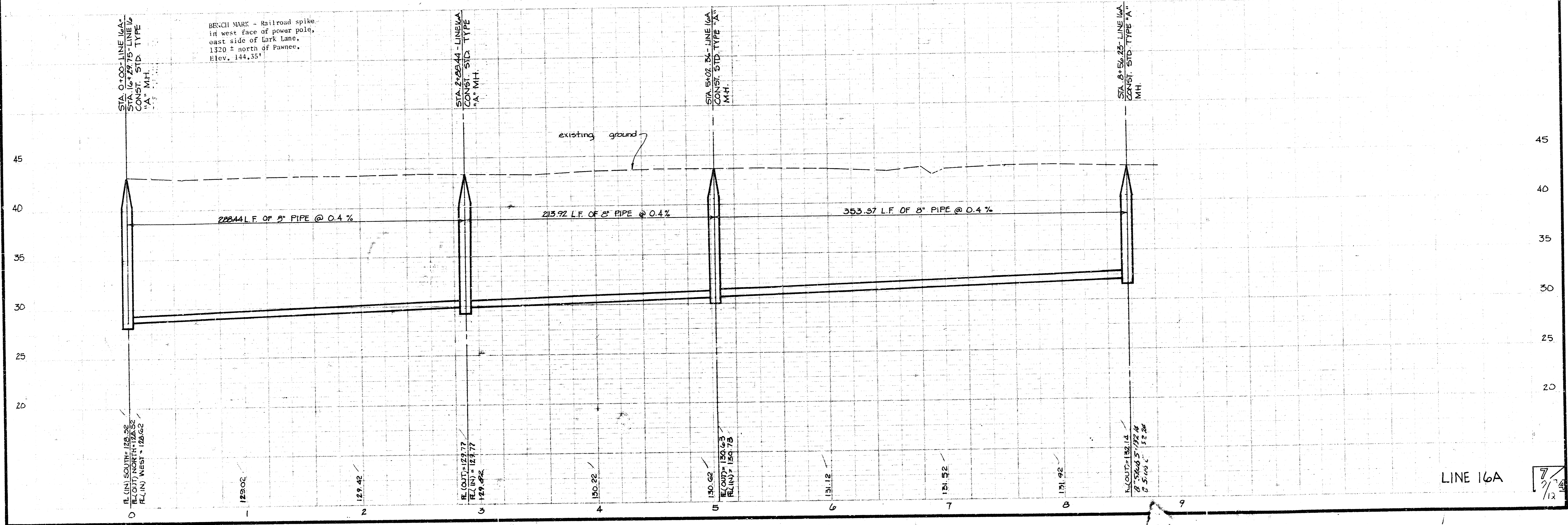
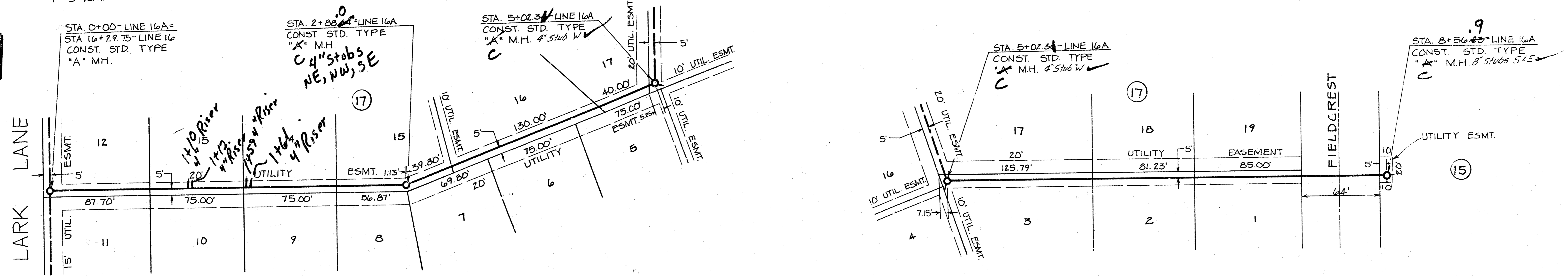
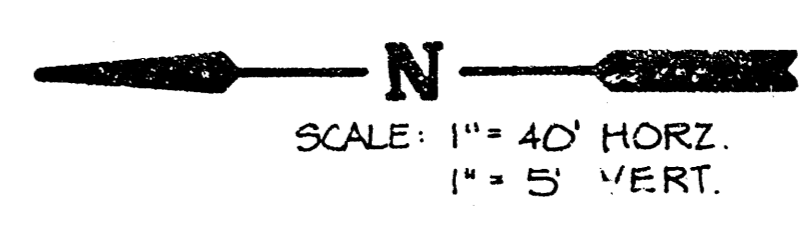
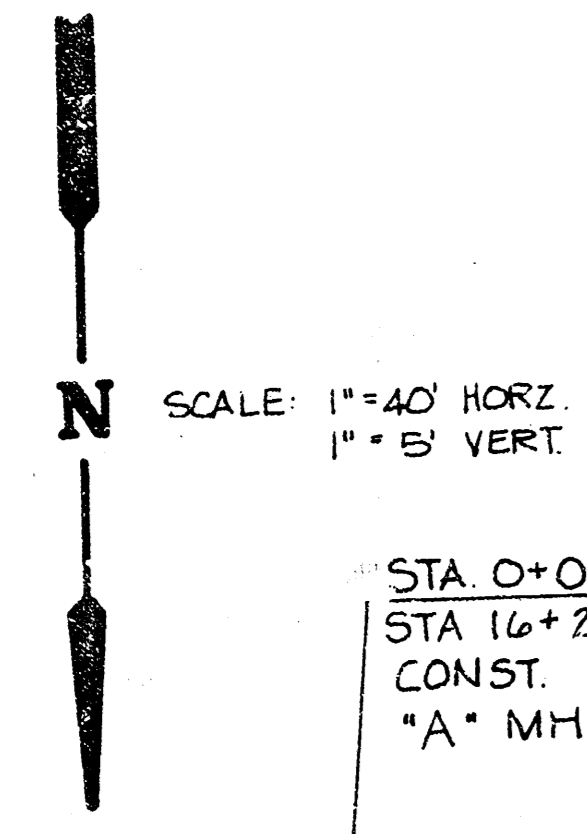
PROJECT NO.  
468-76-245-80941-000-000-001



BENCH MARK - Railroad spike in west face of power pole, east side of Lark Lane, 1320' north of Pawnee, Elev. 144.35'

LINE 20 & 20A

PROJECT NO.  
468-76-245-80941-000-000-001



LINE 16A  
7/2/12

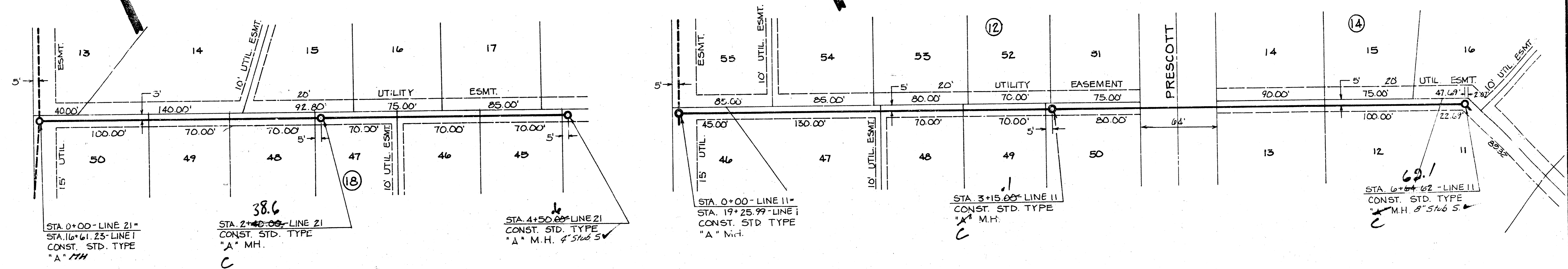




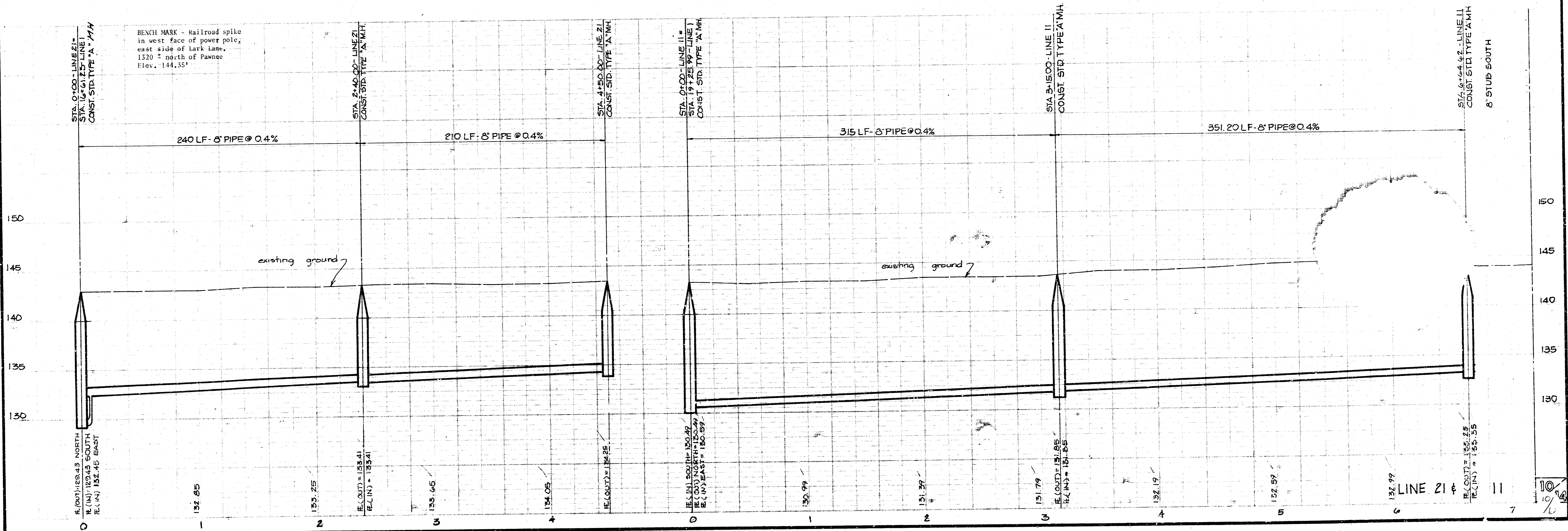
PROJECT NO.  
468-76-245-80941-000-000-001

SCALE: 1" = 40' HORZ.  
1" = 5' VERT.

SCALE: 1" = 40' HORZ.  
1" = 5' VERT.

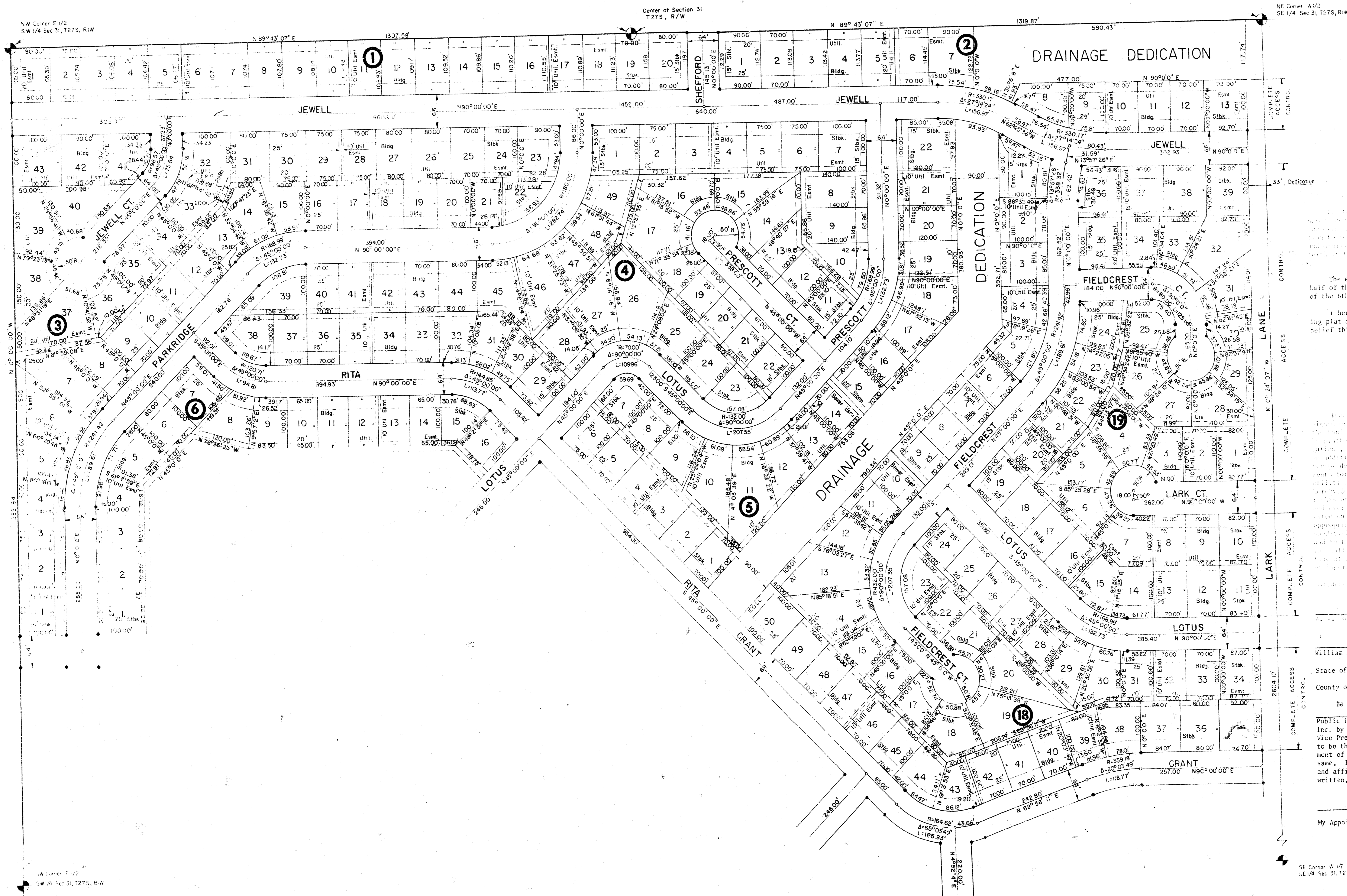


BENCH MARK - Railroad spike  
in west face of power pole,  
east side of Lark Lane,  
1320' north of Pawnee  
Elev. 144.35'



# FINAL PLAT OF PAWNEE MESA ADDITION

AN ADDITION TO SEDGWICK COUNTY, KANSAS



The east 1/4 of the southwest quarter and the west 1/2 of the southeast quarter, Section 31, T27S, R1W of the 6th P.M., Sedgwick County, Kansas.

I hereby certify that the details of the accompanying plat are correct to the best of my knowledge and belief this \_\_\_\_\_ day of \_\_\_\_\_, 1950.

Notary Public  
 Steven L. Anderson  
 VAN BUREN-HALSH-STALLINGS  
 250 North Rock Road #200  
 Wichita, Kansas 67206

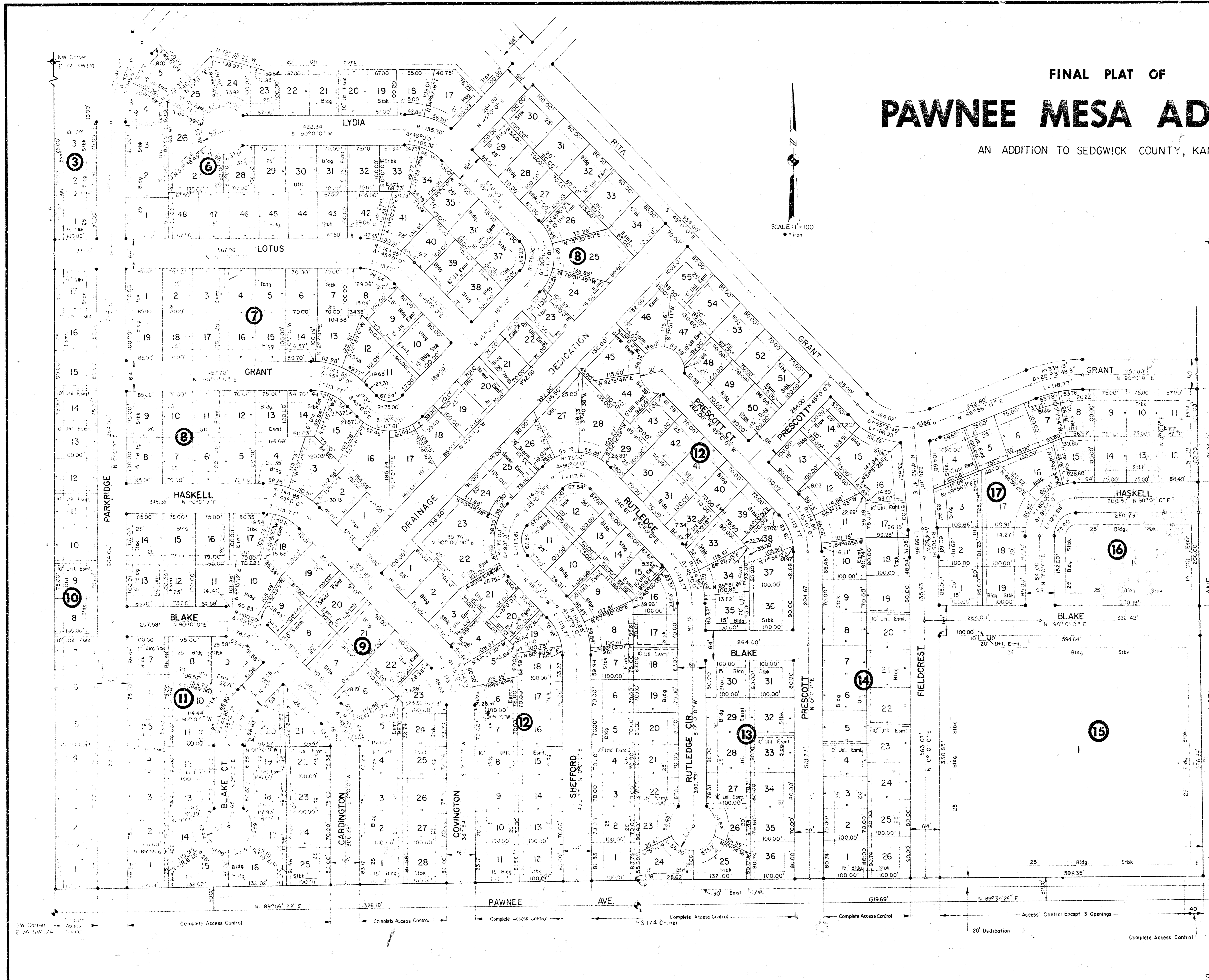
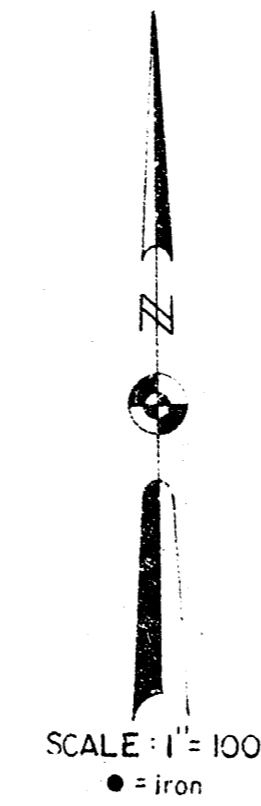
William E. Morin, Vice President  
 State of Kansas,  
 County of Sedgwick,

Be it remembered that on this \_\_\_\_\_ day of \_\_\_\_\_, 1950 before me, a Notary Public in and for said State and County, came Builders, Inc. by W. E. Morin, President and William E. Morin, Vice President of Builders, Inc., to me personally known to be the same persons who executed the foregoing instrument of writing and duly acknowledged the execution of the same. In testimony whereof I have hereunto set my hand and affixed my notarial seal this day and year above written.

\_\_\_\_\_  
 Notary Public  
 My Appointment Expires: \_\_\_\_\_

# FINAL PLAT OF PAWNEE MESA ADDITION

AN ADDITION TO SEDGWICK COUNTY, KANSAS



NE Corner  
W 1/2, SE 1/4  
Sec 31, T27S, R. W

This plat of "Pawnee Mesa Addition" has been submitted to and approved by the Wichita-Sedgwick County Metropolitan Area Planning Commission, Wichita, Kansas.

Dated this \_\_\_\_\_ day of \_\_\_\_\_, 1980.

Wichita-Sedgwick County Metropolitan Area Planning Commission

Robert A. Lakin, Secretary

This plat approved and all dedications shown hereon, if any, accepted by the City Commission of the City of Wichita, Kansas this \_\_\_\_\_ day of \_\_\_\_\_, 1980.

Fony Casado, Mayor

Donald C. Giesick, City Clerk

Entered on transfer record this \_\_\_\_\_ day of \_\_\_\_\_, 1980.

Jarothy K. White, County Clerk

This plat approved and all dedications shown hereon, if any, accepted by the Board of County Commissioners of Sedgwick County, Kansas this \_\_\_\_\_ day of \_\_\_\_\_, 1980.

Donald C. Gragg, Commissioner

Attest: \_\_\_\_\_, County Clerk

State of Kansas, ss:  
County of Sedgwick,

This is to certify that this instrument was filed for record in the Register of Deeds Office at \_\_\_\_\_ on the \_\_\_\_\_ day of \_\_\_\_\_, 1980.

Bette F. McCurt, Register of Deeds

Fat Kettler, Deputy

ss' Dedication

Complete Access Control

SF Corner  
W 1/2 SE 1/4  
Sec 31, T27S, R1W