

Lat. 3, Main 18, S.W.I.
SANITARY SEWER IMPROVEMENTS

to serve
**Hickory Creek Estates
 Phase II**

CITY OF WICHITA, KANSAS

Michael E. Lindelak, P.E. City Engineer

Project Number

488-76-245-82882-000-000-001

Index Code:

743047

Sheet Index

Title Sheet	1
Lines 1 & 2	2
Lines 3 & 4	3
Line 5	4
Easement Grading Plan	5-6
Standard Manhole Detail	7
Shallow Manhole Detail	8
Ring & Cover Detail	9
4" Vertical Riser Detail	10
Copy of Plat	11

BENCHMARKS:

☐ Cut on Top of Curb Return at Southwest Corner of Hickory Creek and Hickory Creek Ct. at Northeast Corner of Lot 26, Block 2.

Elevation = 160.01 City Datum

☐ Cut on Top of Curb at PC on Hickory Creek at East Side of Lot 9, Block 3.

Elevation = 162.21 City Datum

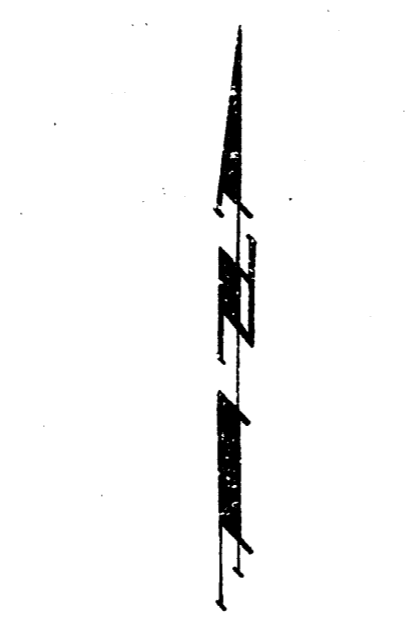
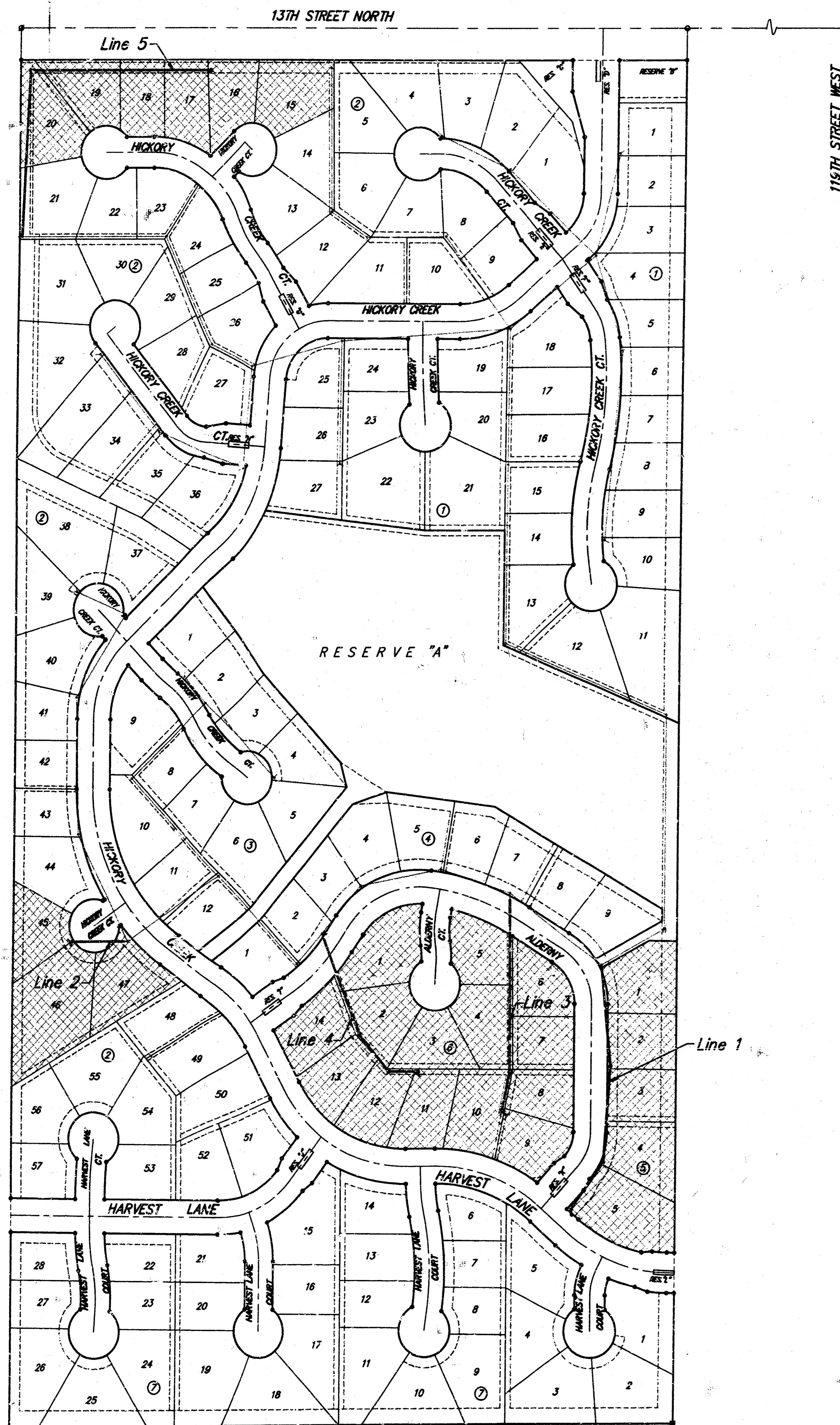
☐ Cut on South Edge of Concrete Entrance to Lift Station 0.5± East of East Edge of Manhole Adjacent to Northwest Corner of Lot 1, Block 5.

Elevation = 155.60 City Datum

GENERAL NOTES:

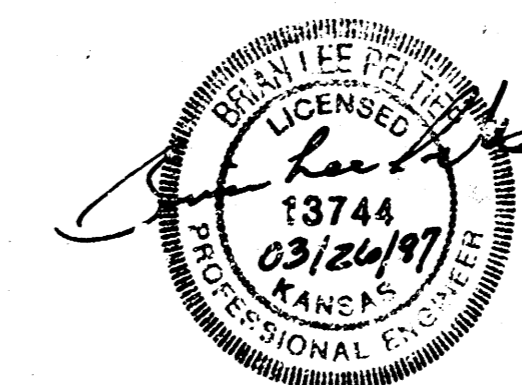
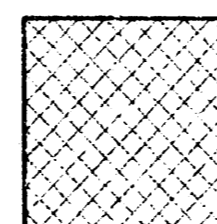
- Contractor will be required to provide notice to utility companies a minimum of twenty-four (24) hours prior to any excavation, as follows:
 Kansas One-Call 687-2470
 The Contractor must notify the following in case of an emergency:
 Multimedia Cablevision 262-0861
 KPL Gas Service Company 383-8650
 Kansas Gas & Electric Company 383-8600
 Peoples Gas Company 942-8350
 Southwestern Bell Telephone Company 1-571-2611
 City of Wichita Water Dept. 268-4928
 City of Wichita Traffic Engineering 269-4446
- Underground utility service lines and overhead utility pole lines are to be adjusted as necessary by others prior to construction unless the plans specifically call for their adjustment by the Contractor or unless the plans specifically identify a utility to be adjusted by its owner during construction. Existing utilities and their location, as shown on the plans, represent the best information obtainable for design. The Contractor will be required to work around existing utilities within the right-of-way which do not conflict with proposed construction.
- Trees and shrubs in public right-of-way which are in direct conflict with proposed new construction shall be removed by the Contractor with the Engineer's approval. Trees and shrubs which are not in direct conflict with proposed new construction shall be saved and protected from damage.
- The Contractor shall give all property owners and/or tenants of developed property abutting the construction of this project a minimum of ten (10) days advance notice prior to start of construction.
- The Contractor shall be responsible for preserving property irons. The Contractor will be required to re-establish any property irons which are damaged or destroyed by his construction operations. Such irons shall be re-established by a licensed land surveyor in accordance with state laws.
- Contractor shall grade the sanitary sewer alignment to the profile and elevations shown on the easement grading plans. All costs for grading shall be paid as lump sum for easement grading.
- All areas disturbed by construction operations shall be seeded with rye grass at a rate of 300 lbs/acre immediately following construction in that area. Prior to seeding, area shall be prepared per City specs.
- When connecting to existing manhole or stub, the contractor shall reshape manhole bottom or adjust the existing stub's alignment or elevation as necessary. Cost shall be subsidiary to project.
- The Contractor shall be responsible for maintaining continuous flow of sewage through construction. Contractor's proposed method for maintaining sewage flow shall be approved by the Engineer. Cost of maintaining flow of sewage through construction will not be paid for directly and this cost shall be considered as subsidiary to the other pay items of work.

Booked
 N. 268
 8/20/97
 RDL

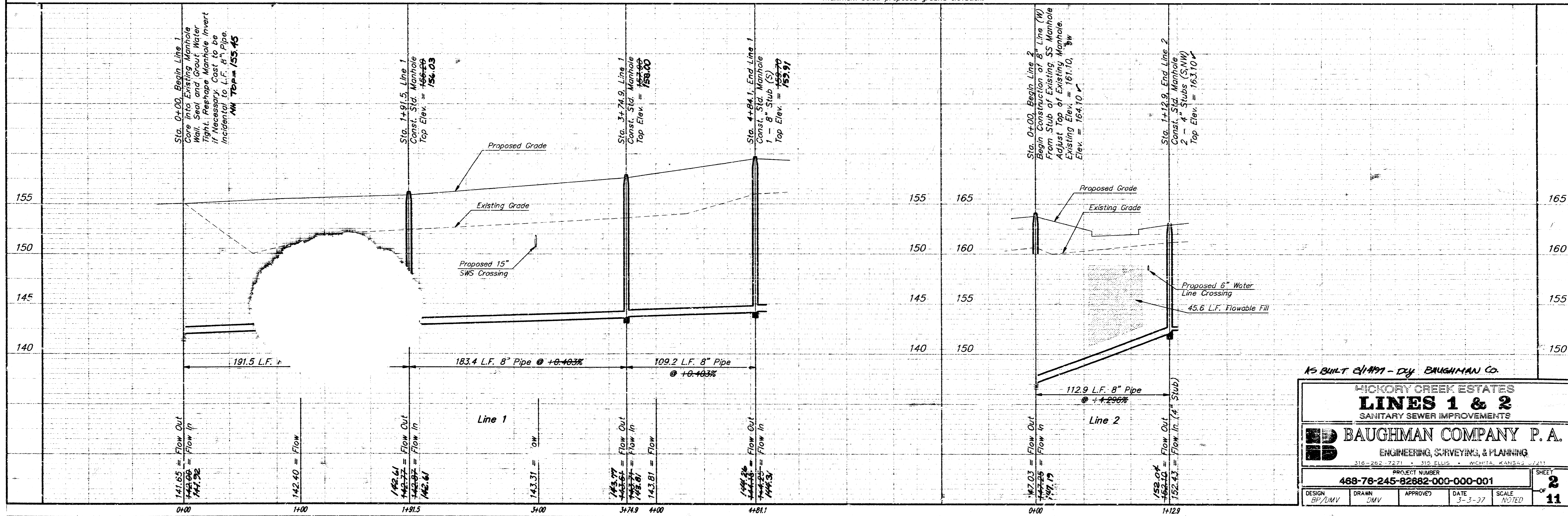
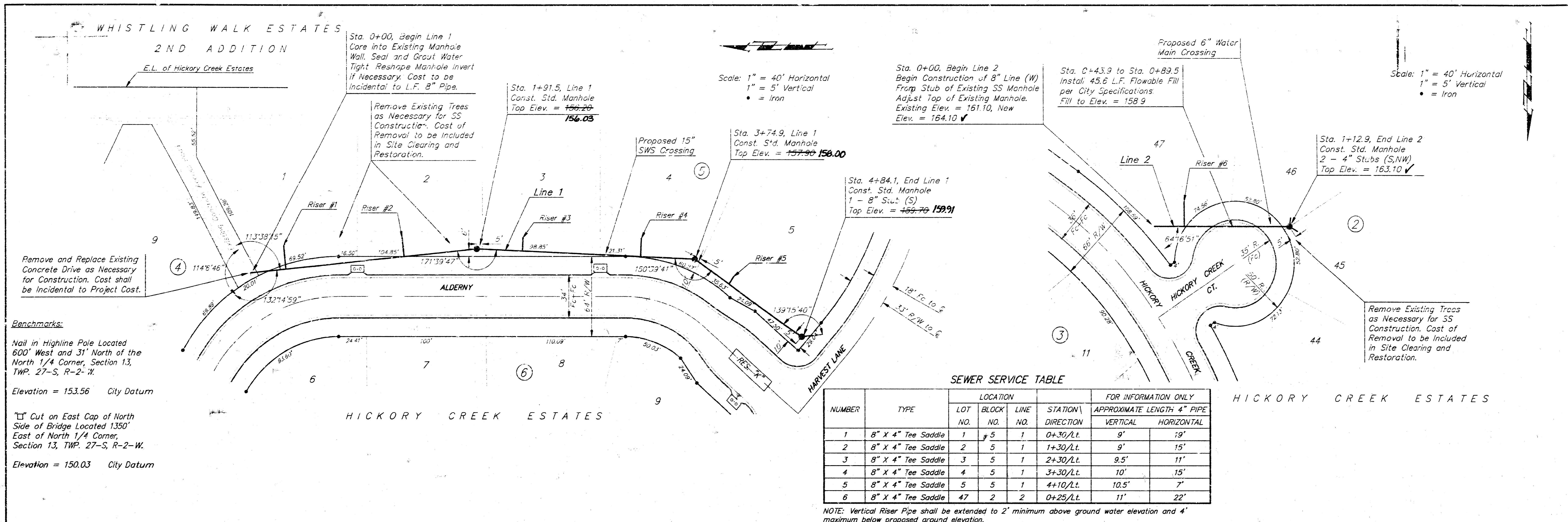


Scale: 1" = 150'

Benefit District



PROJECT INSPECTOR L. AMERL - BAUGHMAN CO., P.A.
 12-30177 8/19/97 Proj. BAUGHMAN CO., P.A.
BAUGHMAN COMPANY P. A.
 ENGINEERING & SURVEYING
 316/282-7271 • 315 ELLIS • WICHITA, KANSAS 67211



Benchmarks:

Nail in Highline Pole Located 600' West and 31' North of the North 1/4 Corner, Section 13, TWP. 27-S, R-2-W.

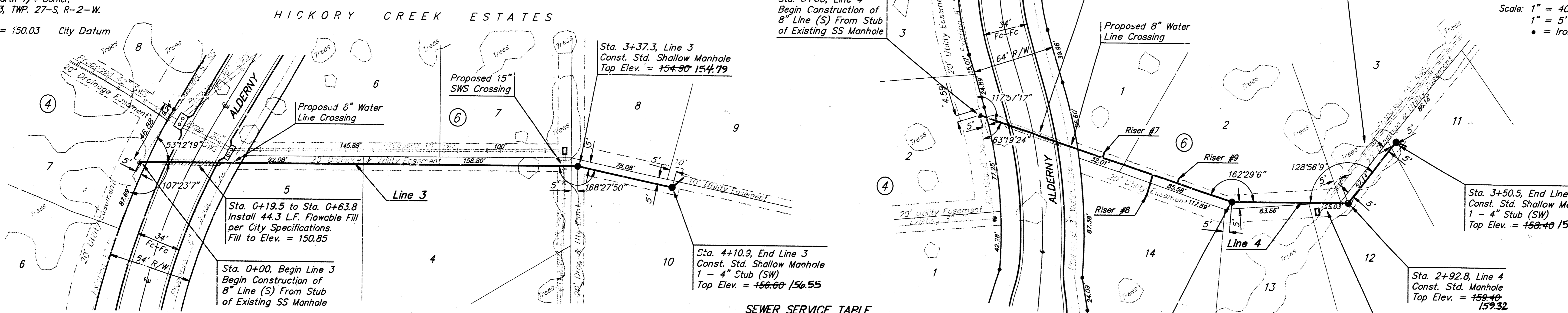
Elevation = 153.56 City Datum

Cut on East Cap of North Side of Bridge Located 1350' East of North 1/4 Corner, Section 13, TWP. 27-S, R-2-W.

Elevation = 150.03 City Datum

Scale: 1" = 40' Horizontal
1" = 5' Vertical
• = Iron

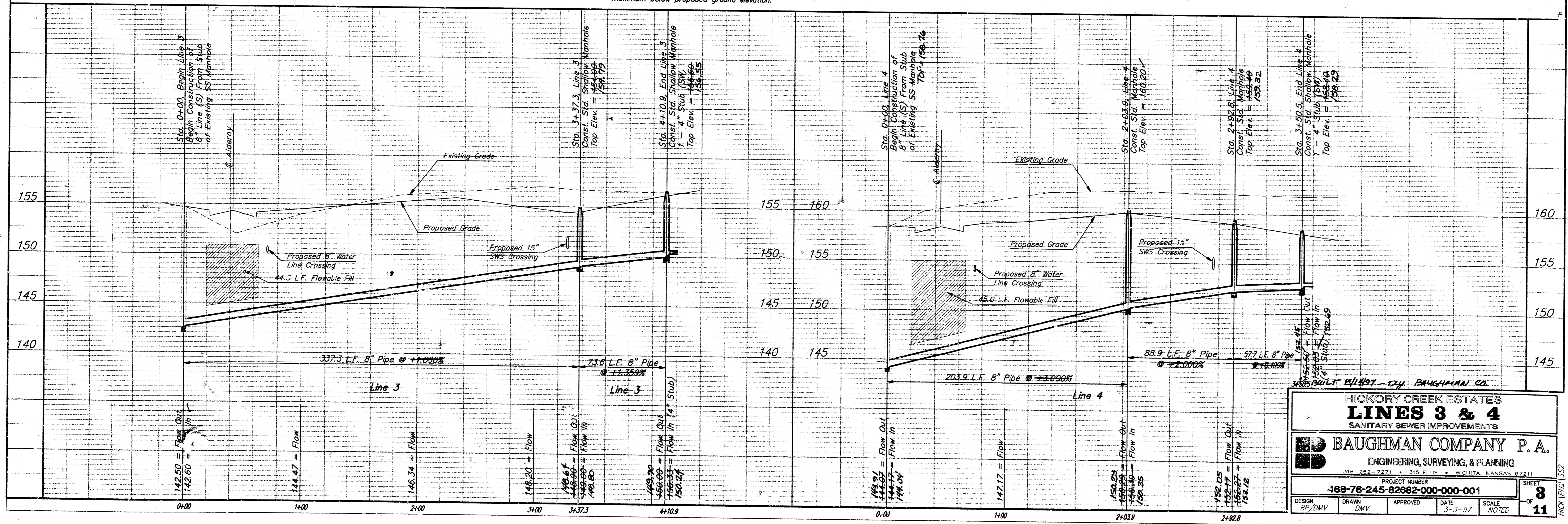
Scale: 1" = 40' Horizontal
1" = 5' Vertical
• = Iron



SEWER SERVICE TABLE

NUMBER	TYPE	LOCATION			FOR INFORMATION ONLY	
		LOT NO.	BLOCK NO.	LINE NO.	STATION\ DIRECTION	APPROXIMATE LENGTH 4" PIPE
7	8" X 4" Tee Saddle	1	6	4	1+00/L.	10.5'
8	8" X 4" Tee Saddle	14	?	4	1+40/R.	9.5'
9	8" X 4" Tee Saddle	2	6	4	1+60/L.	9'

NOTE: Vertical Riser Pipe shall be extended to 2' minimum above ground water elevation and 4' maximum below proposed ground elevation.



**HICKORY CREEK ESTATES
LINES 3 & 4
SANITARY SEWER IMPROVEMENTS**

BAUGHMAN COMPANY P. A.
ENGINEERING, SURVEYING, & PLANNING
318-262-7271 • 318 ELLIS • WICHITA, KANSAS 67211

PROJECT NUMBER
468-76-245-82682-000-001

DESIGN BP/DMV	DRAWN DMV	APPROVED	DATE 3-3-97	SCALE NOTED
------------------	--------------	----------	----------------	----------------

SHEET
3
OF
11

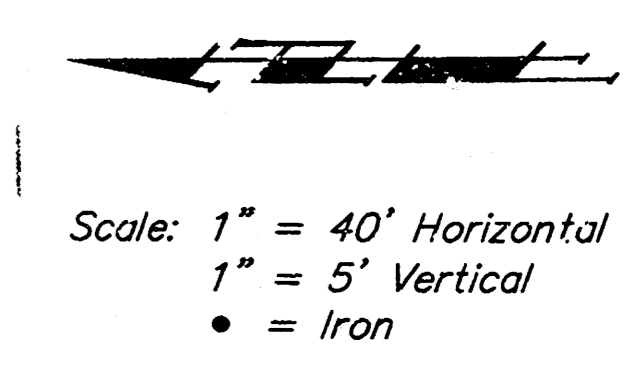
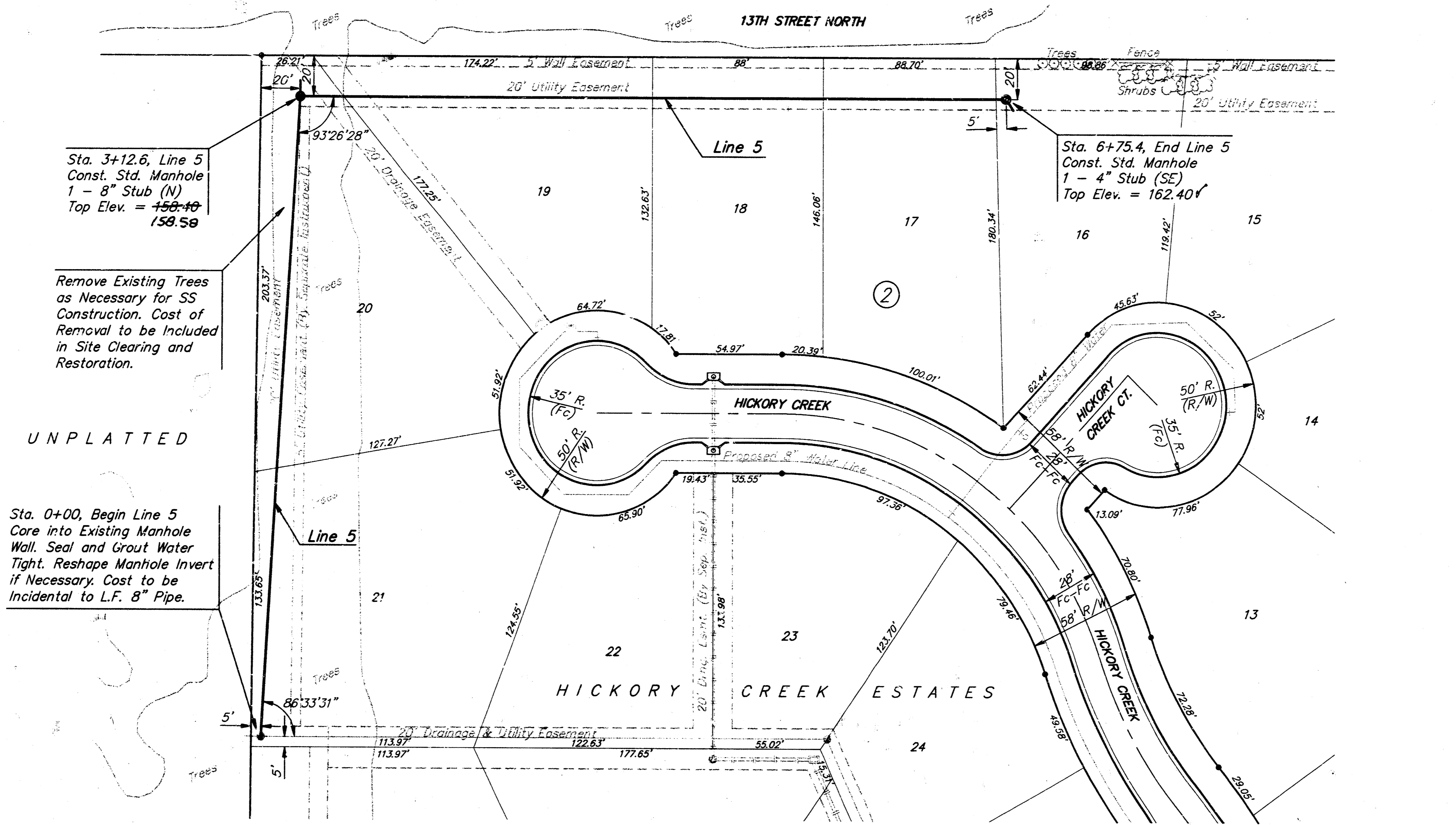
Benchmarks:

Neil in Highline Pole Located
600' West and 31' North of the
North 1/4 Corner, Section 13,
TWP. 27-S, R-2-W.

Elevation = 153.56 City Datum

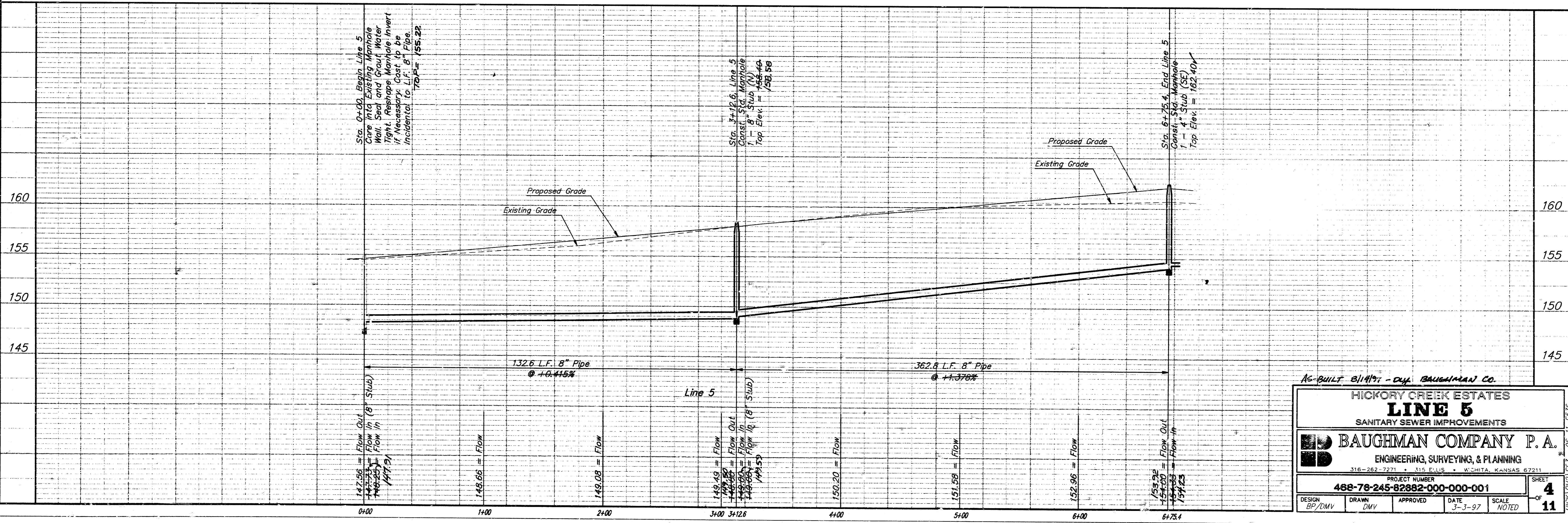
"C" Cut on East Cap of North
Side of Bridge Located 1350'
East of North 1/4 Corner,
Section 13, TWP. 27-S, R-2-W.

Elevation = 150.03 City Datum



Remove Existing Trees
as Necessary for SS
Construction. Cost of
Removal to be Included
in Site Clearing and
Restoration.

Sta. 0+00, Begin Line 5
Core into Existing Manhole
Wall. Seal and Grout Water
Tight. Reshape Manhole Invert
if Necessary. Cost to be
Incidental to L.F. 8" Pipe.



AG-BUILT 8/14/97 - BY BAUGHMAN CO.

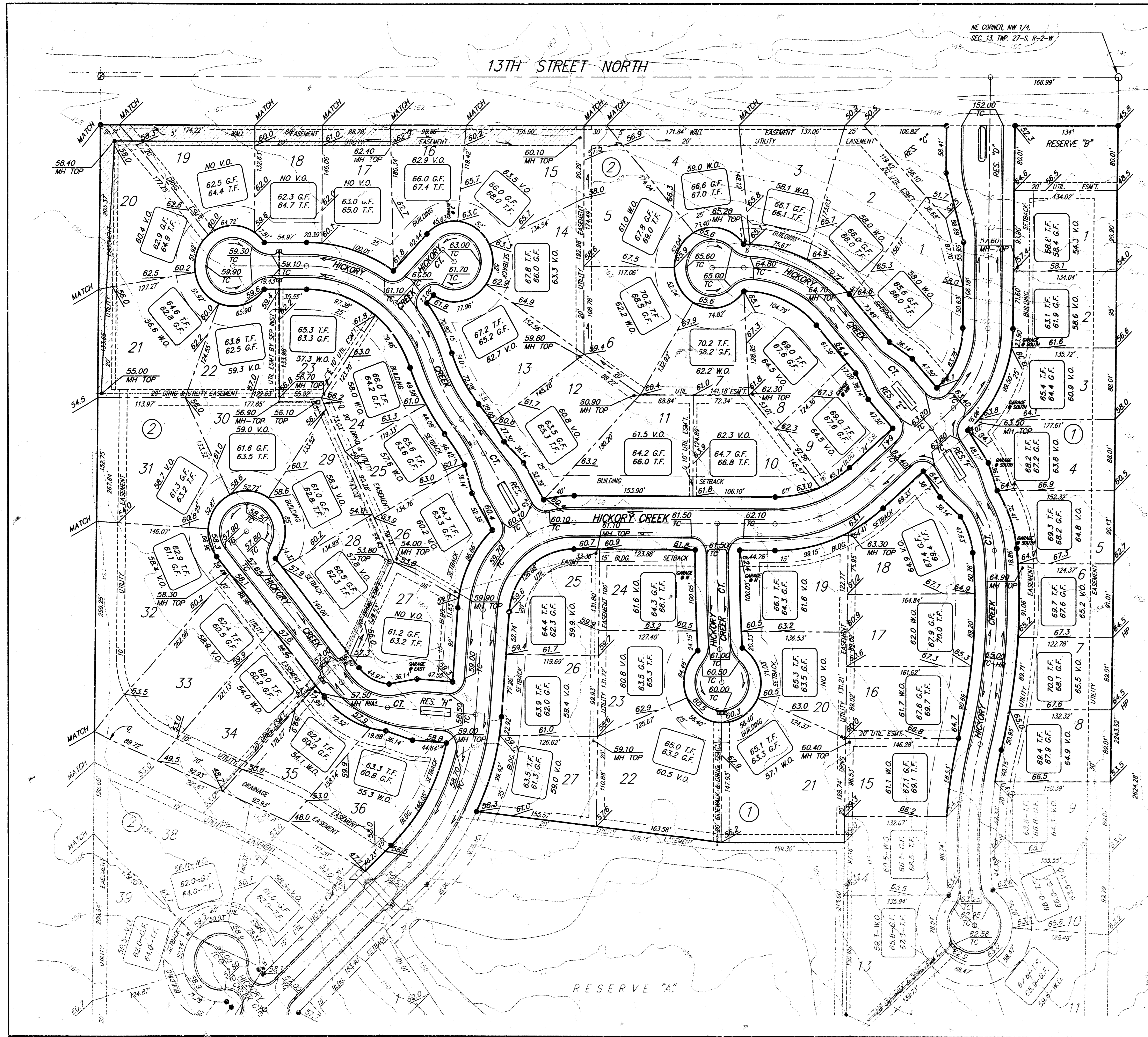
HICKORY CREEK ESTATES
LINE 5
SANITARY SEWER IMPROVEMENTS

BAUGHMAN COMPANY P. A.
ENGINEERING, SURVEYING, & PLANNING
316-262-7271 • 115 FULLER • WICHITA, KANSAS 67211

PROJECT NUMBER
488-78-245-82882-000-000-001

DESIGN BP/DMV	DRAWN DMV	APPROVED	DATE 3-3-97	SCALE NOTED	SHEET 4 OF 11
------------------	--------------	----------	----------------	----------------	------------------------

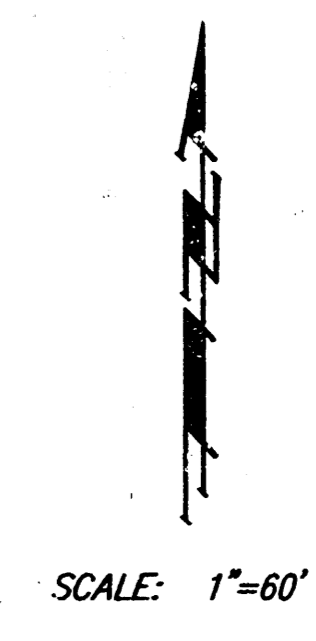
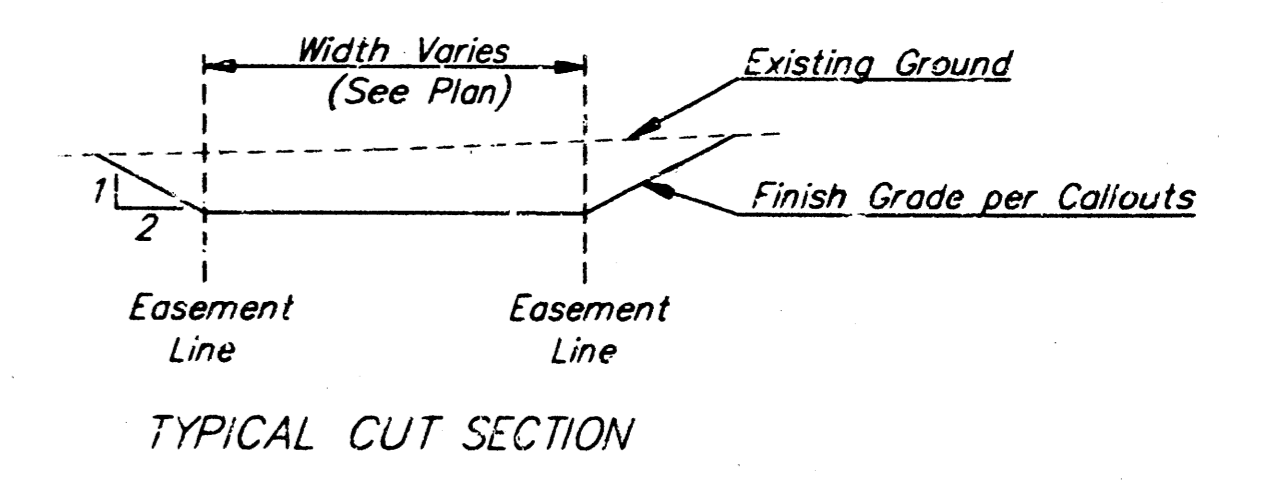
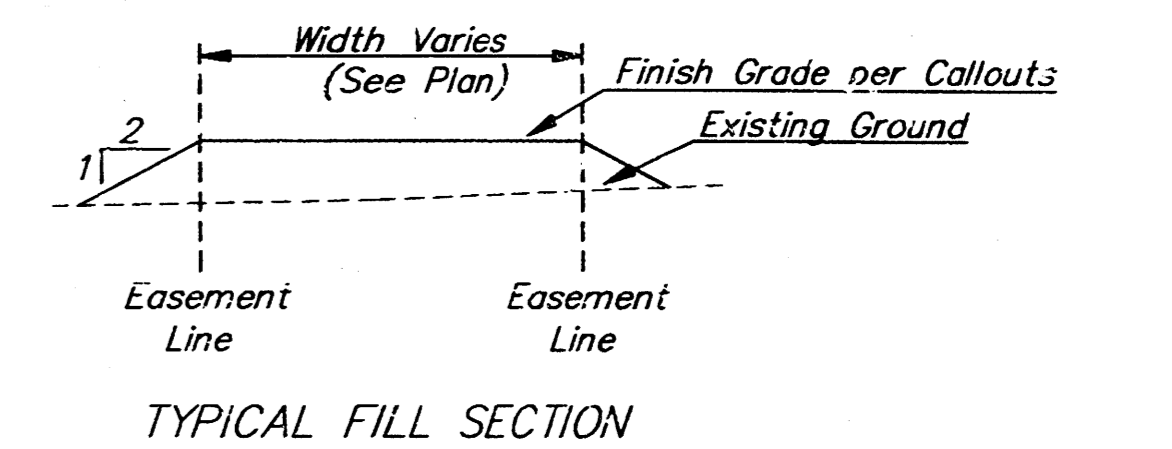
HICKORY CREEK ESTATES 98-17-2538



= Easements To Be Graded

The contractor shall grade the easements as shown to the elevations given on the easement grading plan. All costs for grading shall be incidental to the Easement Grading Bid Item.

The contractor shall 'straight' grade the easements between the elevations given. Where a callout designates 'Match', the contractor will grade to the existing ground elevation.



BENCHMARKS:
 ROD NAIL IN HIGHLINE POLE 600' WEST AND 31' NORTH OF N 1/4 CORNER, SEC. 13, TWP. 27-S, R-2-W. ELEVATION = 1340.26 (M.S.L.) 153.56 (CITY DATUM)
 "□" CUT ON EAST CAP, NORTH SIDE OF BRIDGE 1350' EAST OF N 1/4 CORNER, SEC. 13, TWP. 27-S, R-2-W. ELEVATION = 1337.46 (M.S.L.) 150.06 (CITY DATUM)

MINIMUM BUILDING PAD ELEVATIONS FOR LOWEST OPENING OF STRUCTURE

Lot & Block	City Datum	M.S.L.
11, 12, 13, 14, 21, 22, 27, Bk. 1		
1, 2, 3, 4, 5, 6, 12, Bk. 4	152.0	1339.4
1, 2, 3, 4, 5, 6, 7, 8, 9, Bk. 5		
1, Bk. 6		
31, 32, 33, 34, 35, 36, Bk. 2	154.0	1341.4
1, 2, Bk. 3		

HICKORY CREEK ESTATES
EASMT GRADING PLAN
 PHASE II

BAUGHMAN COMPANY P.A.
 ENGINEERING, SURVEYING, & PLANNING

311-262-7271 • 315 ELLIS • WICHITA, KANSAS 67211

PROJECT NUMBER
488-78-245-82682-000-000-001

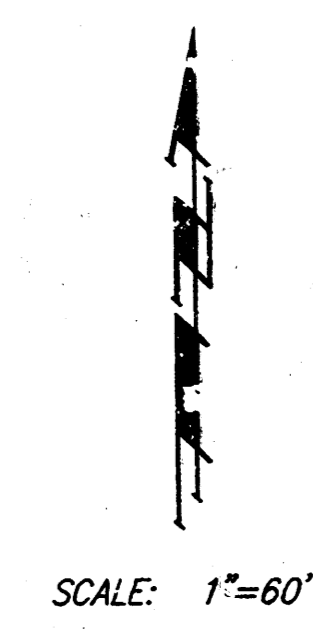
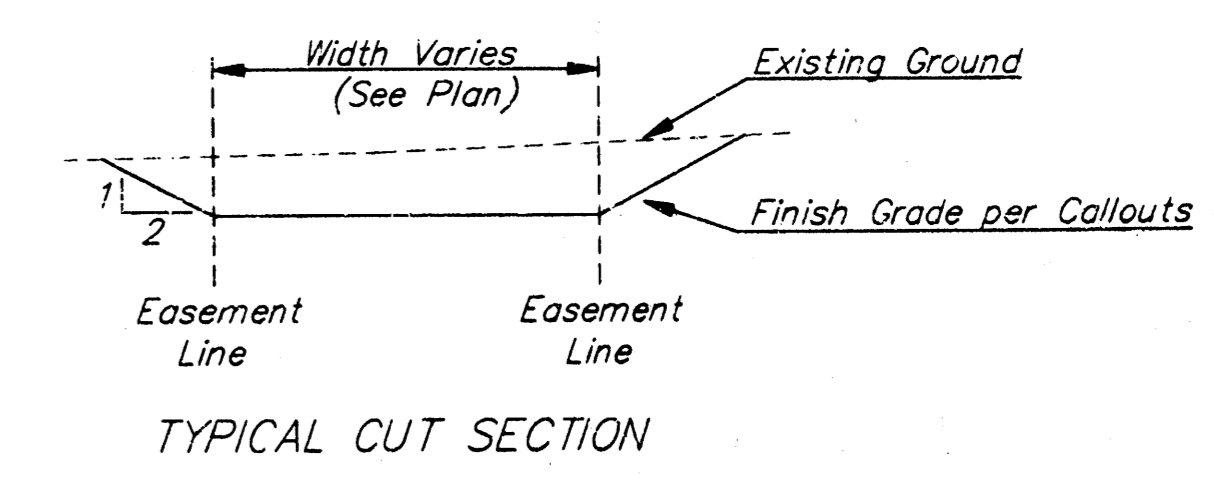
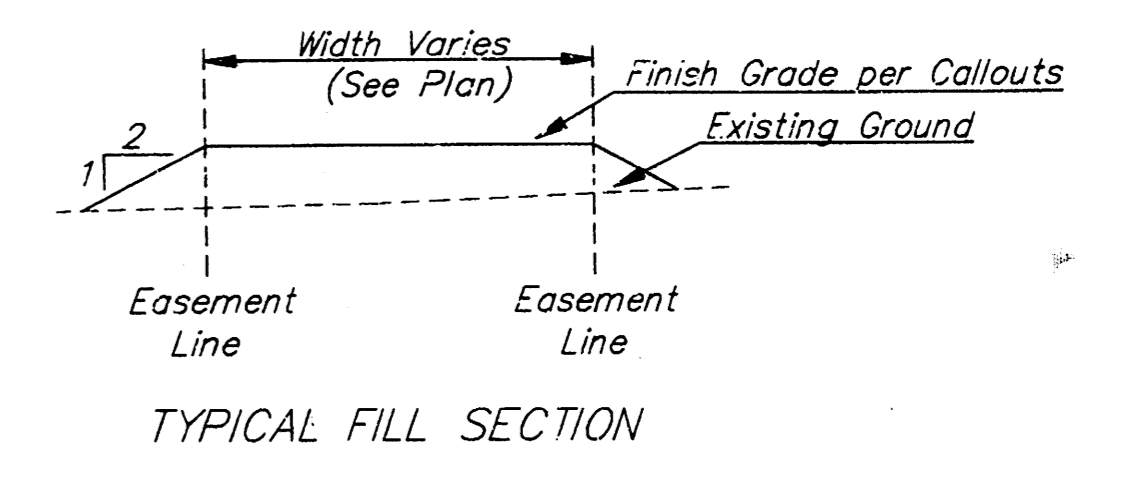
DESIGN	DRAWN	APPROVED	DATE	SCALE	SHEET
DMV	STAFF		3-3-97	1"=60'	5 OF 11

HICKORY CREEK ESTATES

 = Easements To Be Graded

The contractor shall grade the easements as shown to the elevations given on the easement grading plan. All costs for grading shall be incidental to the Easement Grading Bid Item.

The contractor shall 'straight' grade the easements between the elevations given. Where a callout designates 'Match', the contractor will grade to the existing ground elevation.



BENCHMARKS:
 600 NAIL IN HIGHLINE POLE 600' WEST AND 31' NORTH OF N 1/4 CORNER, SEC. 13, TWP. 27-S, R-2-W. ELEVATION = 1340.96 (M.S.L.)
 153.55 (CITY DATUM)
 " " CUT ON EAST CAP, NORTH SIDE OF BRIDGE 1350' EAST OF N 1/4 CORNER, SEC. 13, TWP. 27-S, R-2-W. ELEVATION = 1337.46 (M.S.L.)
 150.06 (CITY DATUM)

MINIMUM BUILDING PAD ELEVATIONS FOR LOWEST OPENING OF STRUCTURE

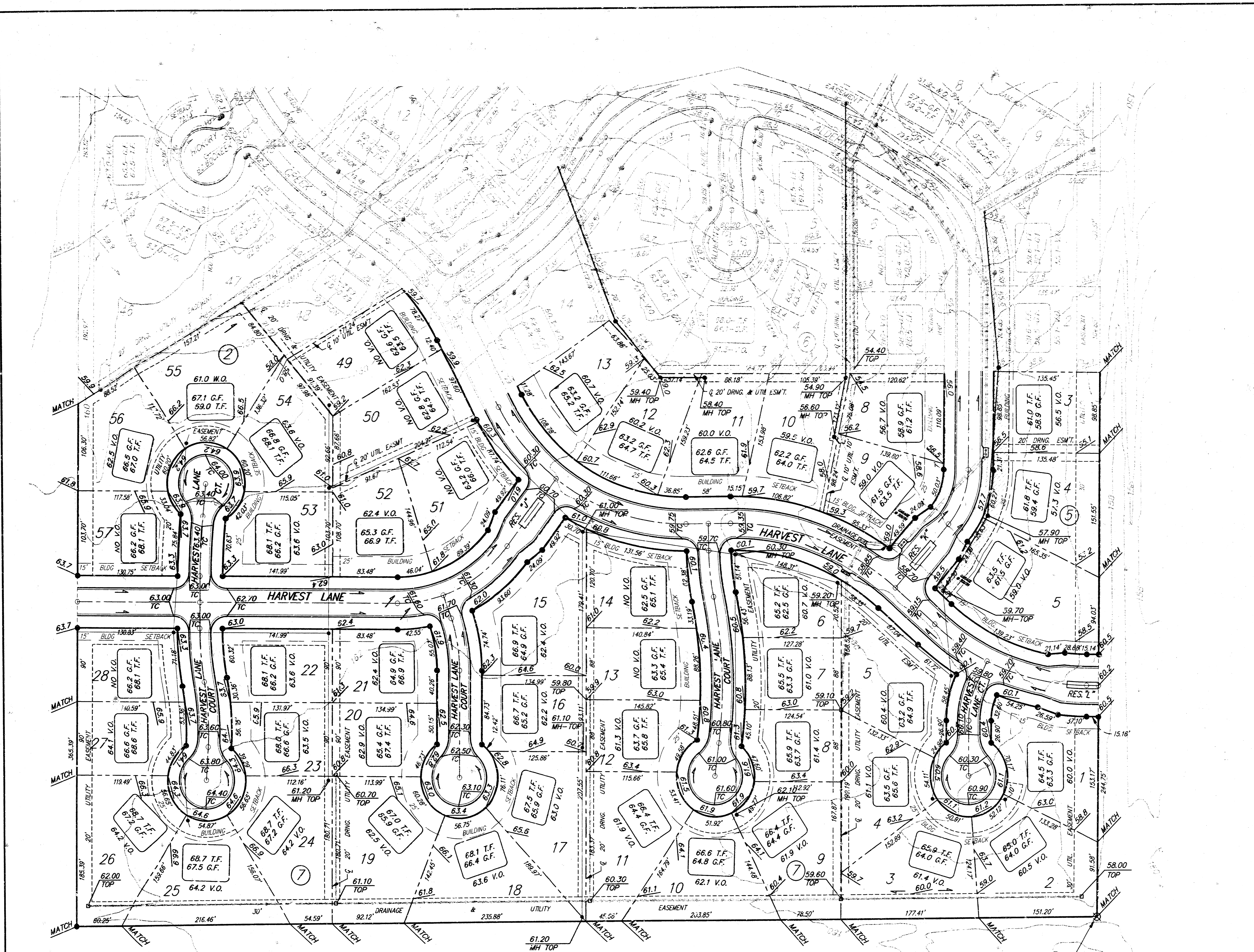
Lot & Block	City Datum	M.S.L.
11, 12, 13, 14, 21, 22, 27, Blk. 1		
1, 2, 3, 4, 5, 6, 12, Blk. 4	152.0	1339.4
1, 2, 3, 4, 5, 6, 7, 8, 9, Blk. 5		
1, Blk. 6		
31, 32, 33, 34, 35, 36, Blk. 2	154.0	1341.4
1, 2, Blk. 3		

REVISED 3-12-96

**HICKORY CREEK ESTATES
 ESMT GRADING PLAN
 PHASE II**

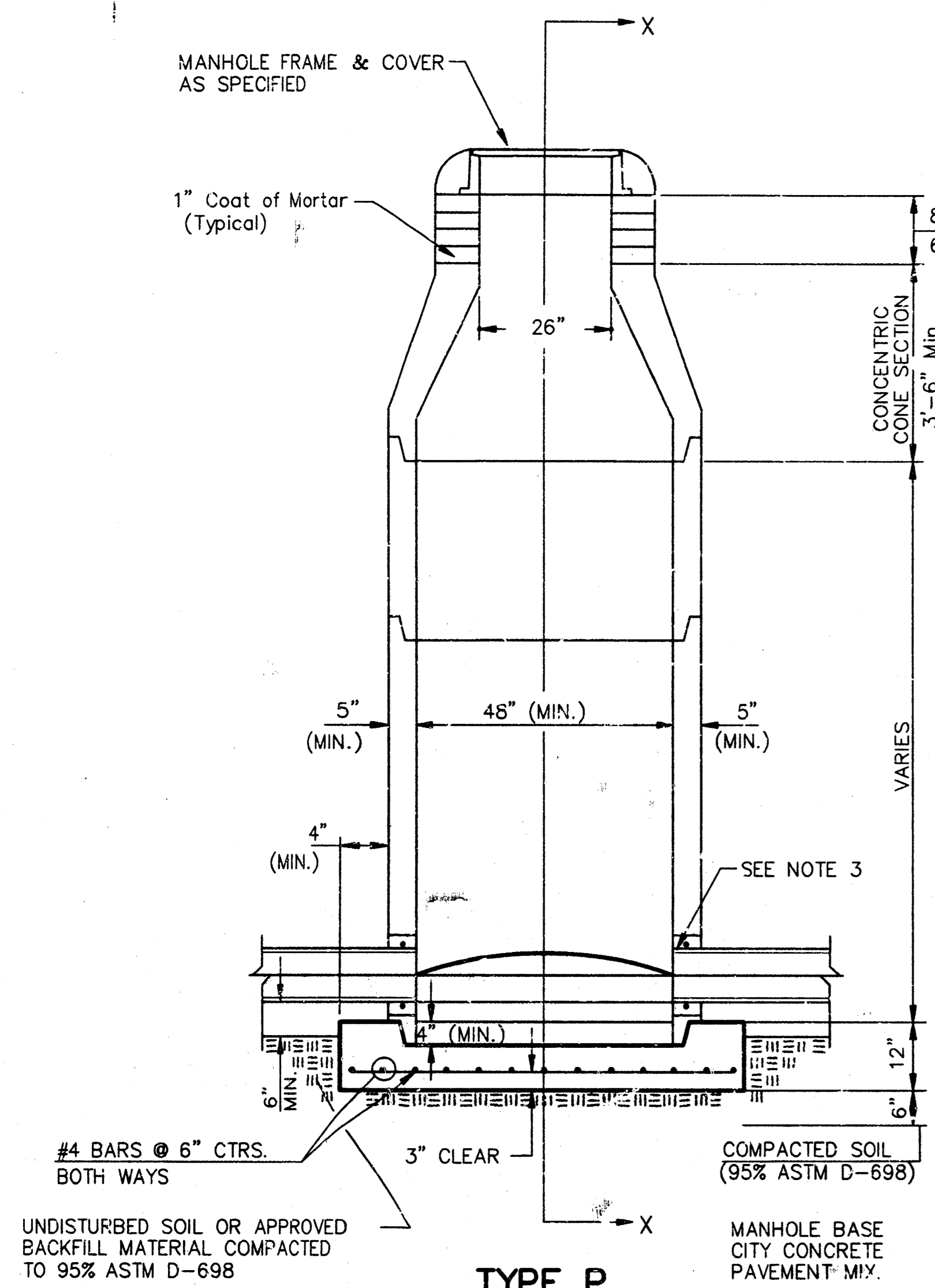
BAUGHMAN COMPANY P. A.
 ENGINEERING, SURVEYING, & PLANNING
 316-262-7271 • 315 ELLIS • WICHITA, KANSAS 67211

DESIGN	DRAWN	APPROVED	DATE	SCALE	SHEET
	STAFF		3-3-97	1"=60'	6 OF 11

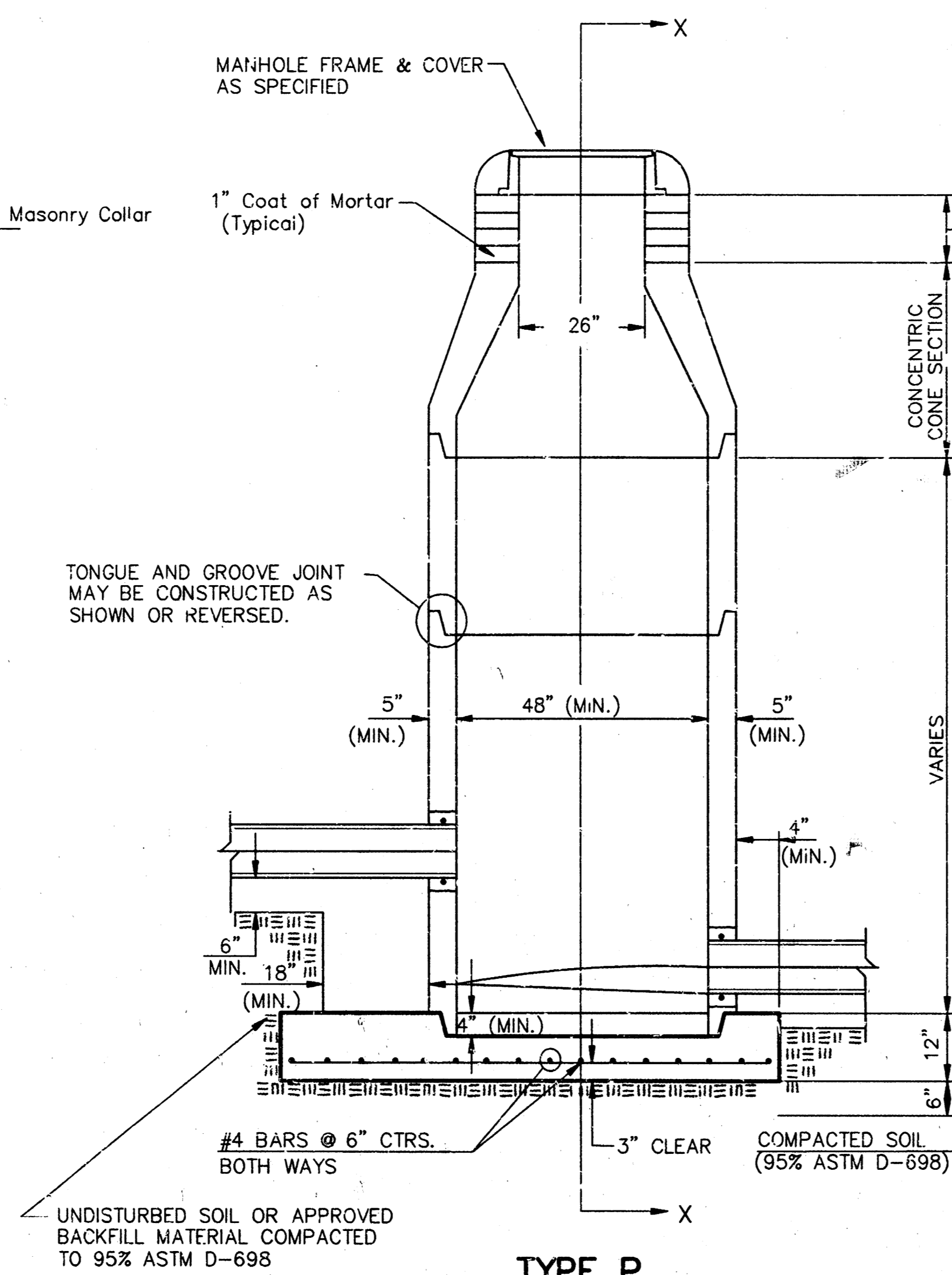


SE CORNER, NW 1/4,
 SEC. 13, TWP. 27-S, R-2-W

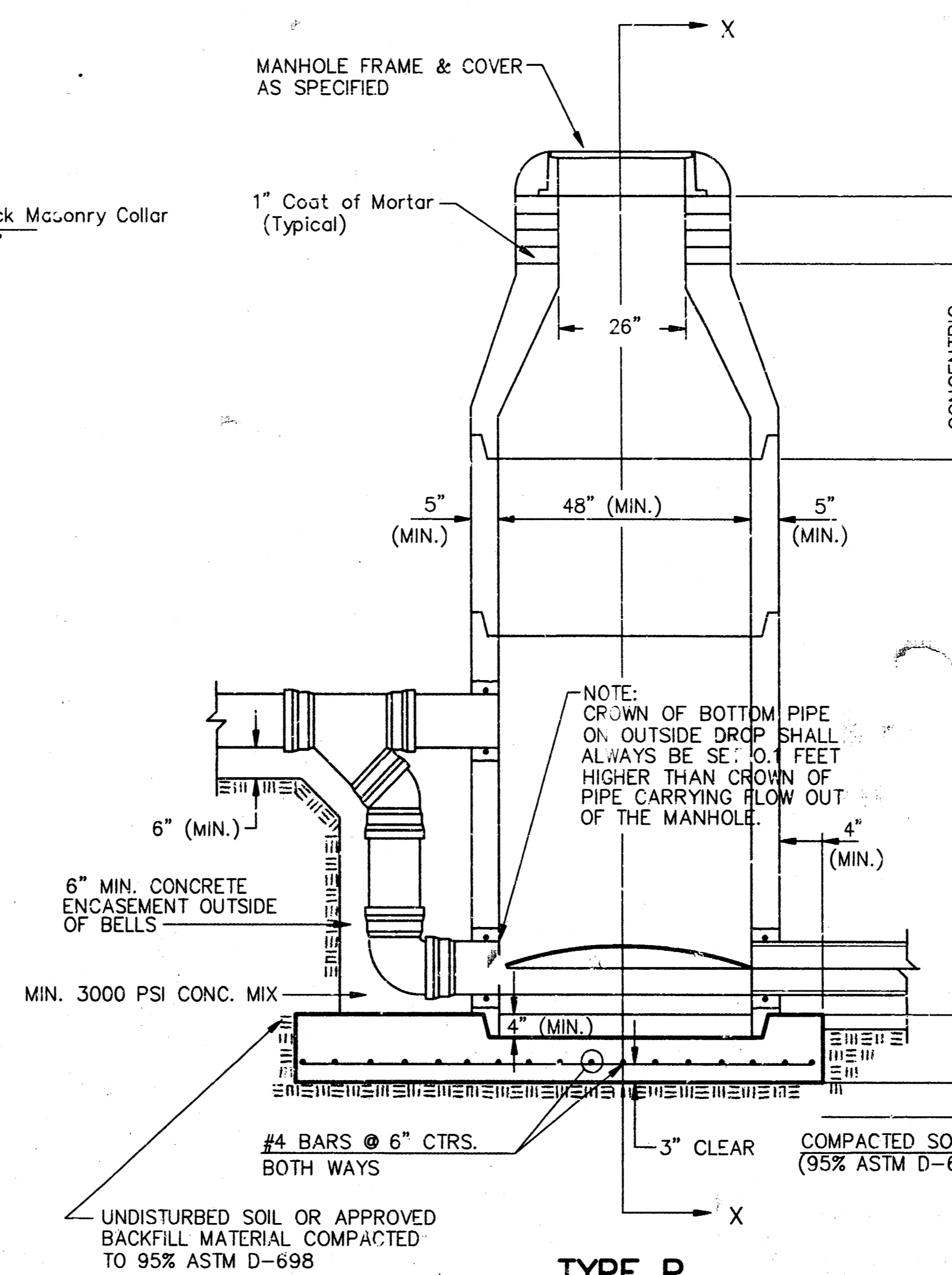
SEWER APPURTENANCES DETAILS



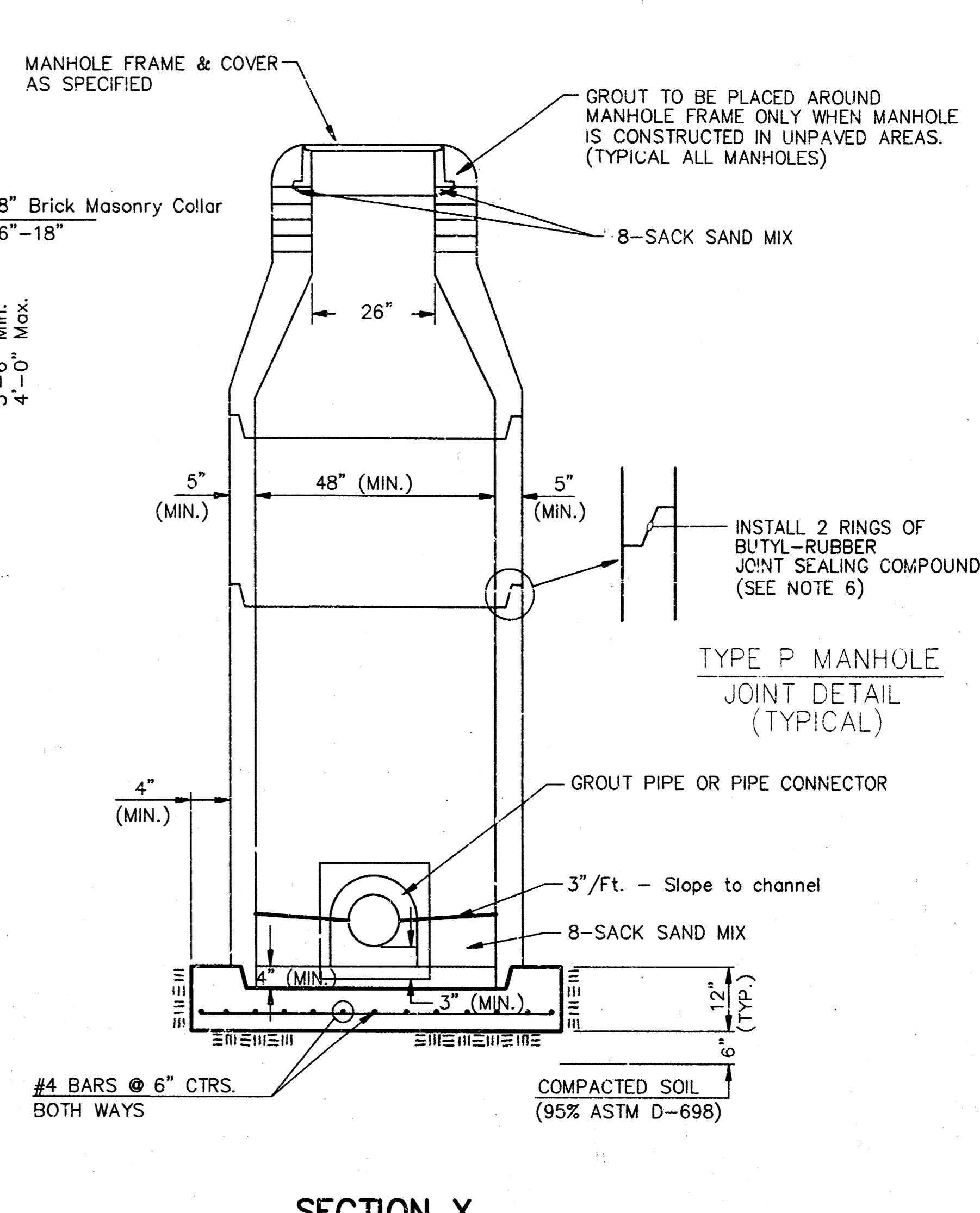
TYPE P STANDARD MANHOLE



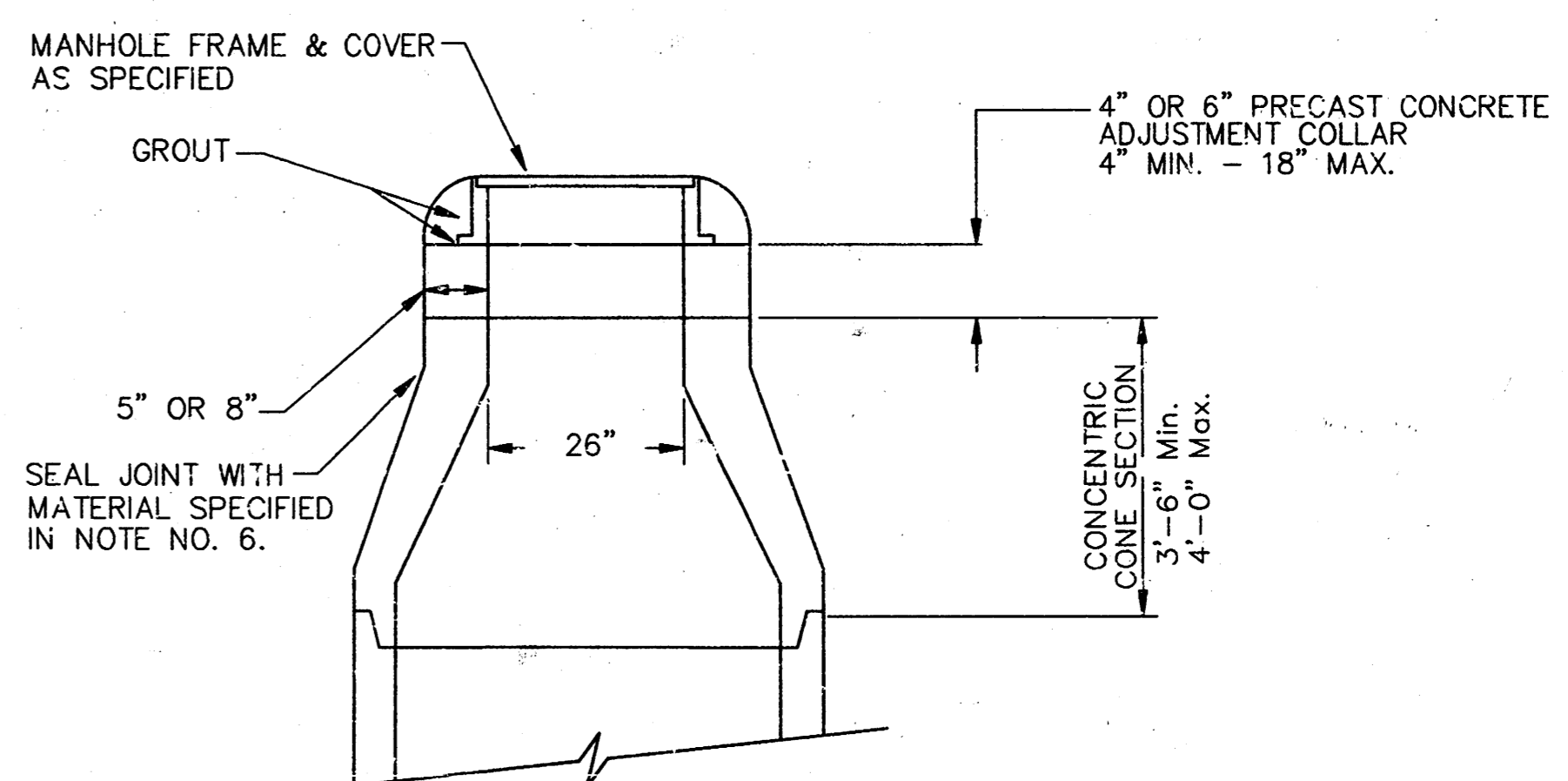
TYPE P INSIDE DROP MANHOLE



TYPE P OUTSIDE DROP MANHOLE



SECTION X (TYPICAL)



ALTERNATE CONSTRUCTION IN UNPAVED AREAS

GENERAL NOTES
PRECAST MANHOLE NOTES

1. ALL PRECAST CONCRETE MANHOLE SECTIONS SHALL CONFORM TO THE LATEST REVISIONS OF A.S.T.M. C478 AS MODIFIED BY THE SPECIFICATIONS.
2. NON-SHRINK GROUT SHALL BE NON-METALLIC TYPE.
3. APPROVED FLEXIBLE WATERSTOP GASKETS SHALL BE INSTALLED TO JOIN THE SEWER TO THE MANHOLE WALL WHEN A.B.S. COMPOSITE PIPE OR P.V.C. PIPE IS USED. FOR OTHER TYPES OF PIPE THE SEWER SHALL BE GROUTED IN PLACE WITH NON-SHRINK GROUT. THE SEWER PIPE SHALL BE SUPPORTED WITH CONCRETE ENCASEMENT A MINIMUM OF 3 FEET FROM THE MANHOLE WALL AND TO THE FIRST JOINT FOR V.C.P. SUCH THAT THE JOINT REMAINS FLEXIBLE.
4. ALL INSIDE SURFACES OF THE CONCRETE MANHOLE WHICH WOULD BE EXPOSED TO SEWER GAS SHALL BE COATED WITH 2 COATS OF SERIES 66 H-BUILD EPOXOLINE, DRY THICKNESS OF 4 MILS.
5. EXTERIOR MANHOLE WALLS SHALL BE COATED WITH 633 BITUMINOUS COATING.
6. JOINT SEALING COMPOUND SHALL BE KENT EQUAL.
7. PRECAST MANHOLES SHALL BE SET AT LE MANHOLE BASE.
8. TOP OF MANHOLE FLOOR SLAB SHALL BE A THE FLOW LINE OF THE OUTLET PIPE TO INS. MINIMUM THICKNESS OF SHAPED INVERT.
9. LIFTING HOLES SHALL BE FILLED WITH NON-SHRI. INTERIOR SURFACE COATED AS SPECIFIED.
10. MORTAR USED IN MASONRY CONSTRUCTION SHALL CONTAIN CEMENT PER CUBIC YARD. CONCRETE USED IN MANHOLE BASES SHALL CONFORM TO THE REQUIREMENTS OF CONCRETE FOR CONCRETE PAVEMENT CONSTRUCTION AS SPECIFIED IN THE CITY STANDARD PAVING SPECIFICATIONS USING CITY CONCRETE PAVEMENT MIX WITHOUT AIR ENTRAINING ADMIXTURE. MORTAR SHALL BE PLACED AROUND THE MANHOLE RING AS SHOWN ON THE DRAWINGS WHEN MANHOLES ARE CONSTRUCTED IN UNPAVED AREAS. MANHOLES CONSTRUCTED WHERE PIPE SIZES ARE SMALLER THAN 24" SHALL HAVE AN INSIDE DIAMETER OF 4". MANHOLES CONSTRUCTED WHERE PIPE SIZES ARE 24" OR LARGER SHALL HAVE AN INSIDE DIAMETER OF 5". COMPLETED MANHOLE SHALL BE WITHOUT LEAKS AND WATER TIGHT.

11. REINFORCING STEEL SHALL BE INSTALLED IN THE MANHOLE BASES AND SHALL CONSIST OF NO. 4 BARS PLACED IN BOTH DIRECTIONS. THE MANHOLE BASE REINFORCEMENT SHALL BE PLACED AT LEAST 3" ABOVE THE BOTTOM OF THE MANHOLE BASE. ALL COSTS FOR FURNISHING AND INSTALLING REINFORCING STEEL SHALL BE INCLUDED IN THE UNIT PRICE BID FOR THE MANHOLE.
12. OPENINGS SHALL BE CUT INTO THE MANHOLE WALL WHEN OUTSIDE DROPS ARE CONSTRUCTED ON EXISTING MANHOLES. SUCH OPENINGS CUT INTO EXISTING MANHOLES SHALL BE AS SMALL AS PRACTICAL TO FACILITATE INSTALLING AND GROUTING THE NEW PIPE IN PLACE. WATERSTOP GASKETS SHALL BE USED WITH P.V.C. AND A.B.S. COMPOSITE PIPE. THE NEW PIPE SHALL BE GROUTED INTO THE OPENING USING AN APPROVED NONSHRINK GROUT FOR THE FULL MANHOLE WALL THICKNESS. THE EXTERIOR OF THE COMPLETED CONNECTION SHALL BE SEALED WITH AN APPROVED BITUMINOUS COATING SUCH THAT THE CONNECTION WILL BE WATER TIGHT. FLOOR OF MANHOLE SHALL BE MODIFIED TO FORM NEW FLOW CHANNEL FOR THE NEW CONNECTION AS INDICATED BY THE DRAWING. THIS WORK, INCLUDING MODIFICATION OF MANHOLE FLOOR, SHALL BE PAID FOR AT THE UNIT PRICE BID FOR OUTSIDE DROP STACK CONSTRUCTED ON EXISTING MANHOLE.
13. THE FLOORS OF ALL MANHOLES SHALL BE SHAPED WITH FLOW CHANNELS SUCH THAT THE MANHOLES WILL BE SELF-CLEANING AND FREE OF AREAS WHERE SOLIDS COULD BE DEPOSITED AS SEWAGE FLOWS THROUGH THE MANHOLE FROM ALL INLET PIPES TO THE OUTLET PIPE. FLOW CHANNELS SHALL BE FORMED TO MATCH THE BOTTOM HALVES OF THE INFLOWING PIPES AND THE OUTFLOWING PIPE AS SHOWN BY THE DRAWINGS EXCEPT FOR INSIDE DROP MANHOLES. FLOW CHANNELS FOR INSIDE DROP MANHOLES SHALL BE CONSTRUCTED AS INDICATED BY THE DRAWING. MANHOLE FLOORS SHALL HAVE SLOPES OF 3 INCHES PER FOOT IN THE AREAS OUTSIDE OF THE FLOW CHANNELS SLOPED TOWARD THE FLOW CHANNELS. PIPES LAID THROUGH MANHOLES SHALL HAVE THE TOP HALF REMOVED TO NEAT LINES FOR THE FULL INSIDE DIAMETER OF THE MANHOLE. MANHOLE FLOORS SHALL THEN BE SHAPED AROUND THE BOTTOM HALF OF THE PIPE WHICH FORMS THE FLOW CHANNEL.
14. PIPES INSTALLED WITHIN THE EXCAVATION MADE FOR THE MANHOLE SHALL BE GRADED WITH CONCRETE TO THE LIMITS OF THE MANHOLE EXCAVATION. WHEN CLAY PIPE IS USED, THE CRADLE SHALL EXTEND TO THE FIRST JOINT OUTSIDE THE MANHOLE. THE CRADLE SHALL BE TERMINATED AT THE CLAY PIPE JOINT IN A MANNER WHICH WILL MAINTAIN THE FLEXIBILITY OF THE JOINT. COST OF GRADLE WITHIN MANHOLE EXCAVATION OR TO CLAY PIPE JOINTS ADJACENT TO MANHOLE SHALL BE INCLUDED IN THE UNIT PRICE BID FOR THE MANHOLE.

15. MANHOLE COVER CASTINGS AND MANHOLE FRAME CASTINGS SHALL CONFORM TO THE REQUIREMENTS AS INDICATED IN THE STANDARD SPECIFICATIONS AND AS SHOWN IN THE STANDARD DETAIL DRAWING.
16. THE VERTICAL DROP IN INSIDE DROP MANHOLES SHALL NOT EXCEED 2' FOR INFLOWING PIPES SIZED 12" OR SMALLER AND 2' FOR INFLOWING PIPES LARGER THAN 12". THE CROWNS OF INFLOWING PIPES SHALL NEVER BE SET LOWER THAN THE CROWN OF THE OUTFLOWING PIPE.
17. STANDARD MANHOLES AND STANDARD INSIDE DROP MANHOLES SHALL BE BID AS STANDARD MANHOLES FOR THE TYPE AND DIAMETER INDICATED. OUTSIDE DROP MANHOLES SHALL BE BID AS STANDARD OUTSIDE DROP MANHOLES FOR THE TYPE AND DIAMETER INDICATED. ALL MANHOLE DIAMETERS WILL BE 4" UNLESS INDICATED OTHERWISE.
18. A BRICK MASONRY COLLAR SHALL BE INSTALLED BETWEEN THE CAST IRON FRAME AND THE CONCENTRIC CONE. THE COLLAR WILL HAVE 8" WALLS AND A VERTICAL HEIGHT OF 6" MINIMUM AND 18" MAXIMUM. A 1" COAT OF MORTAR WILL BE PLASTERED ON THE OUTSIDE OF THE COLLAR. THE USE OF PRE-CAST CONCRETE SPACERS FOR MANHOLE TOP ADJUSTMENT IS ALSO ALLOWED.

CITY OF WICHITA

STD. MANHOLE DETAILS
BAUGHMAN COMPANY P. A.

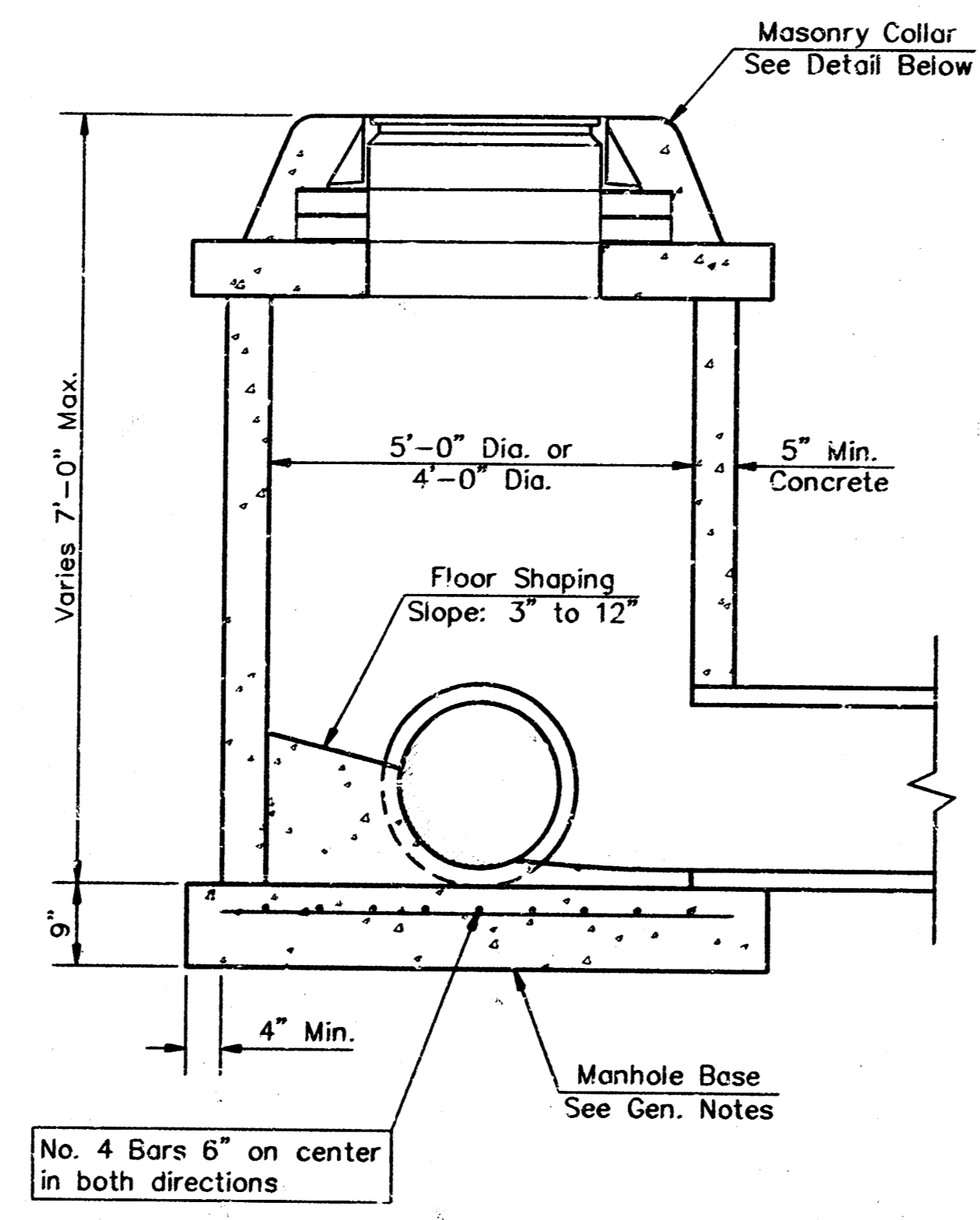
ENGINEERING, SURVEYING, & PLANNING

316-262-7271 • 316 ELLIS • WICHITA, KANSAS 67211

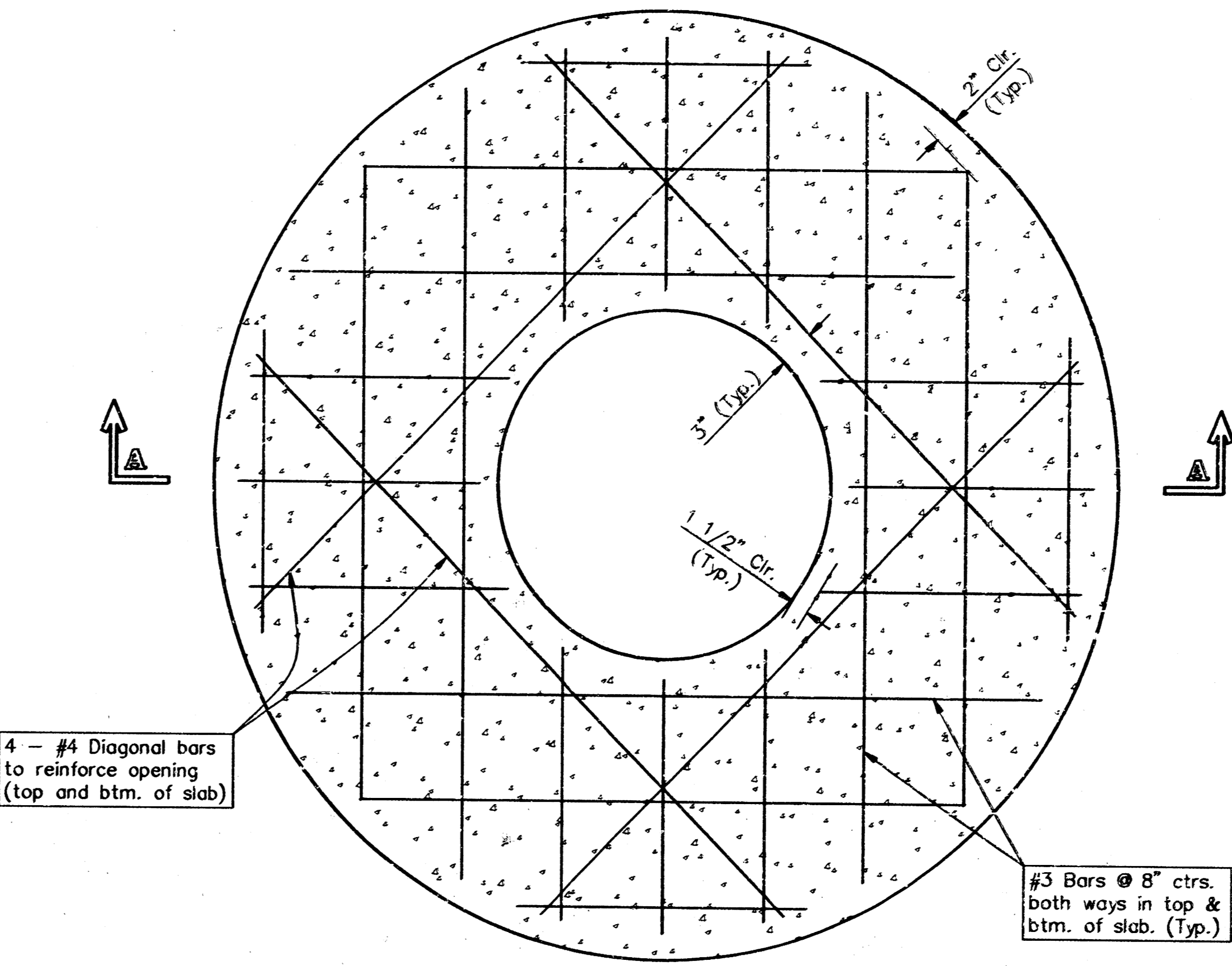
PROJECT NUMBER
488-78-245-82682-000-000-001

DESIGN	DRAWN	APPROVED	DATE	SCALE	SHEET
	NOV.93				7

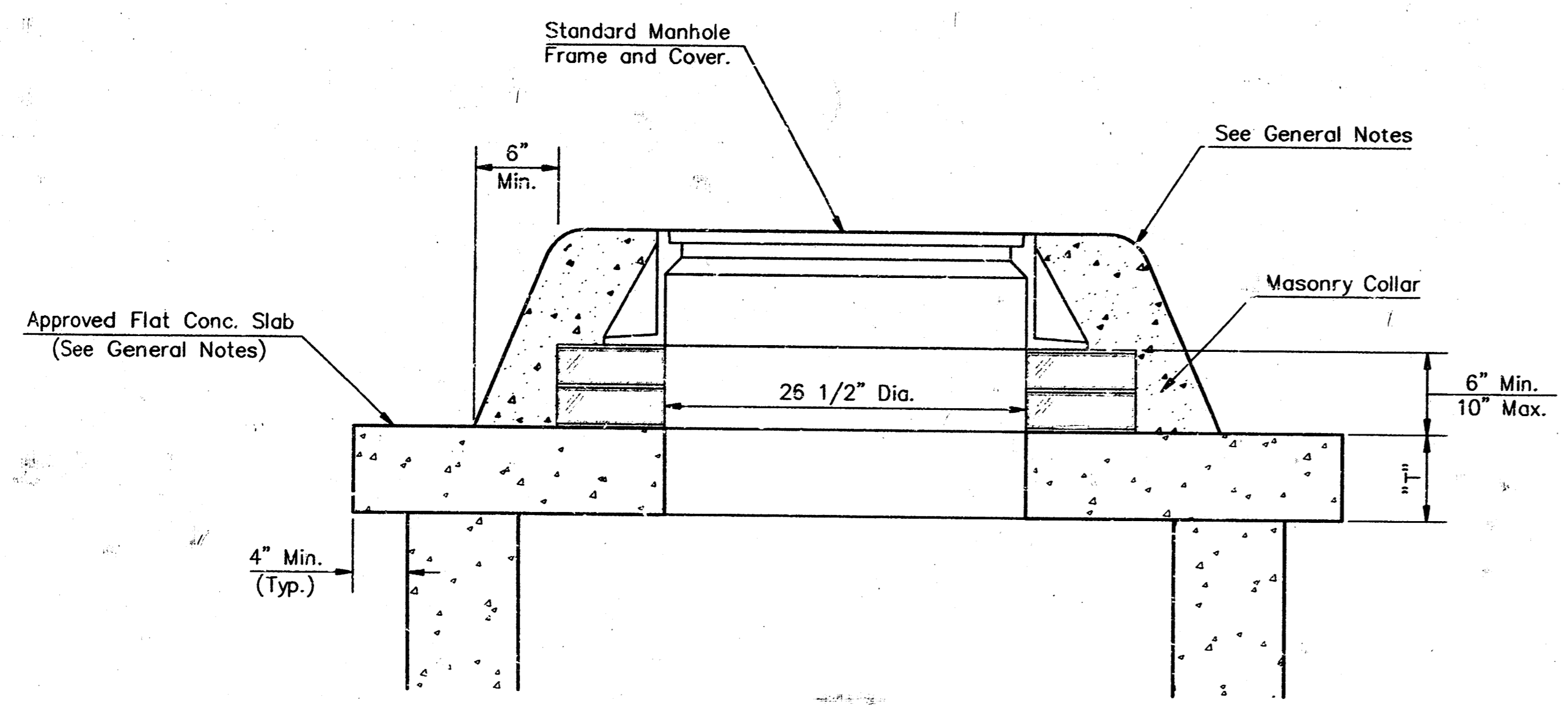
OF 11



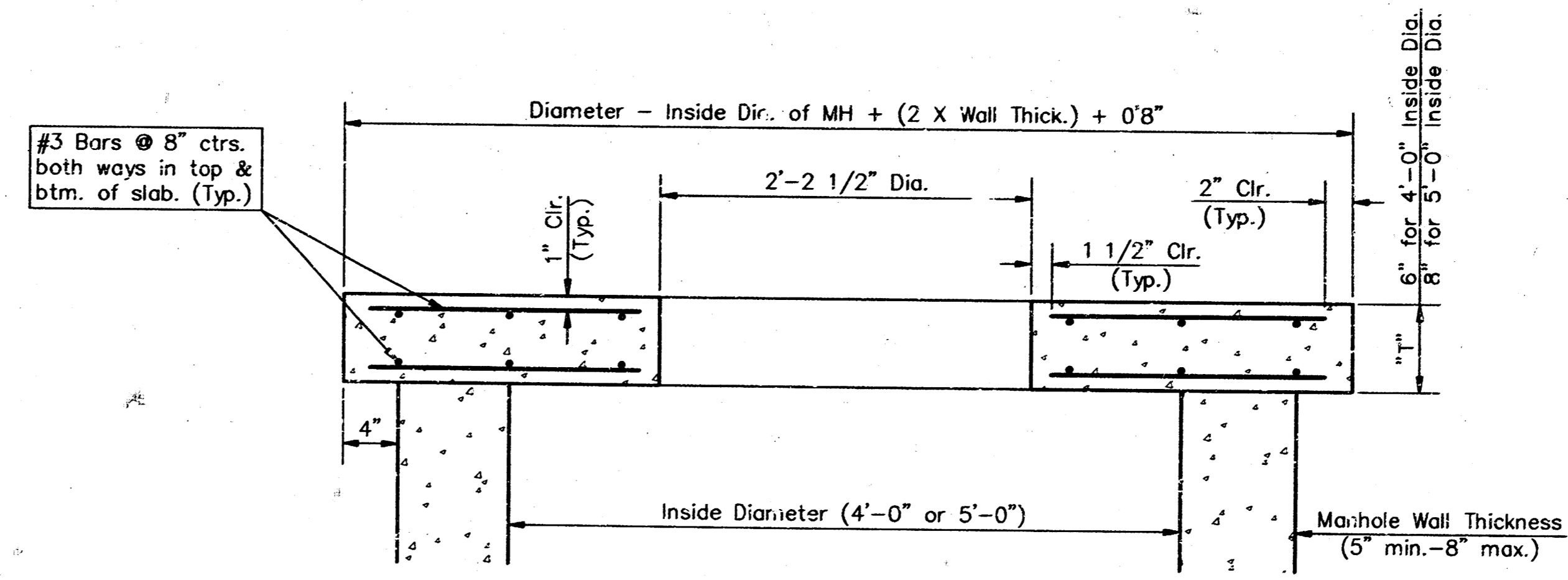
SHALLOW TYPE MANHOLE



PLAN



MASONRY COLLAR DETAIL



FLAT CONCRETE SLAB DETAILS

GENERAL NOTES

- Mortar used in masonry construction shall contain 8 sacks of cement per cubic yard. Concrete used in manhole bases shall conform to the requirements of concrete for concrete pavement construction as specified in the city standard paving specifications using city concrete cement mix without air entraining admixture. Mortar shall be placed around the manhole ring as shown on the drawings when manholes are constructed in unpaved areas. Manholes constructed where pipe sizes are smaller than 24" shall have an inside diameter of 4". Manholes constructed where pipe sizes are 24" or larger shall have an inside diameter of 5". Completed manhole shall be without leaks and water tight.
- Reinforcing steel shall be installed in the manhole bases and shall consist of no. 4 bars placed on 6" centers in both directions. The manhole base reinforcement shall be placed 6" above the bottom of the manhole base. All costs for furnishing and installing reinforcing steel shall be included in the unit price bid for the manhole.
- The floors of all manholes shall be shaped with flow channels such that the manholes will be self cleaning and free of areas where solids could be deposited as sewage flows through the manhole from all inlet pipes to the outlet pipe. Flow channels shall be formed to match the bottom halves of the inflowing pipes and the outflowing pipe as shown by the drawings. Manhole floors shall have slopes of 3 inches per foot in the areas outside of the flow channels sloped toward the flow channels. Pipes laid through manholes shall have the top half removed to neat lines or the full inside diameter of the manhole. Manhole floors shall then be shaped around the bottom half of the pipe which forms the flow channel.
- Pipes installed within the excavation made for the manhole shall be cradled with concrete to the limits of the manhole excavation. When clay pipe is used, the cradle shall extend to the first joint outside the manhole. The cradle shall be terminated at the clay pipe joint in a manner which will maintain the flexibility of the joint. Cost of cradle within manhole excavation or to clay pipe joints adjacent to manhole shall be included in the unit price bid for the manhole.
- Manhole cover castings and manhole frame castings shall conform to the requirements as indicated in the standard specifications and as shown in the standard detail drawings.
- The crowns of inflowing pipes shall never be set lower than the crown of the outflowing pipe.
- Standard shallow manholes shall be paid for at the unit price bid per each for the type and diameter indicated. All standard shallow manhole diameters will be 4' unless indicated otherwise.
- All brick used in manhole construction shall meet Grade SW of ASTM C652 or C62-87.

SECTION A-A

Type "P" & Type "C"
Shallow Manhole
 Details

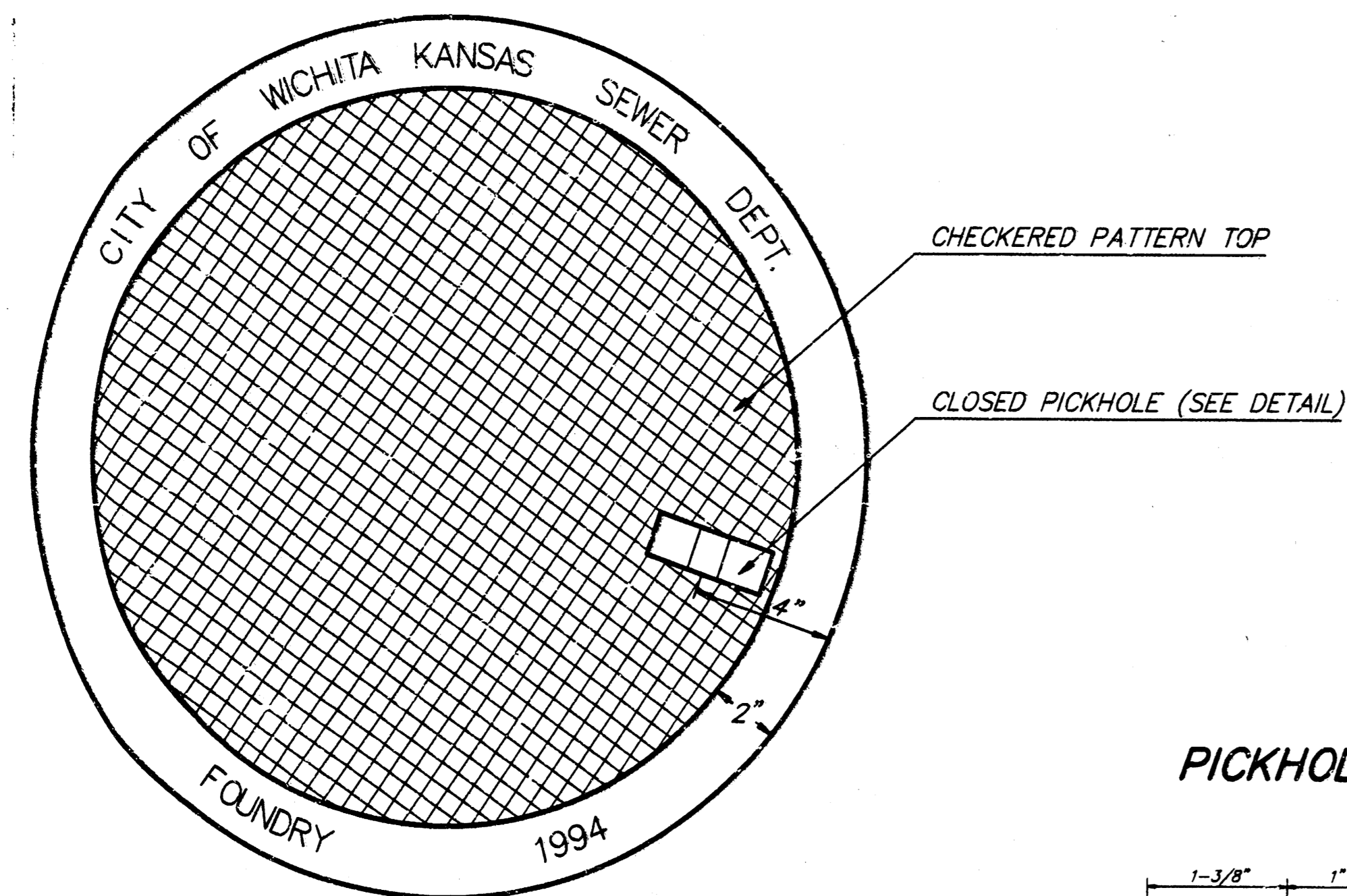
BAUGHMAN COMPANY P. A.
 ENGINEERING, SURVEYING, & PLANNING
 315-262-7271 • 315 ELLIS • WICHITA, KANSAS 67211

PROJECT NUMBER
468-78-245-82682-000-000-001

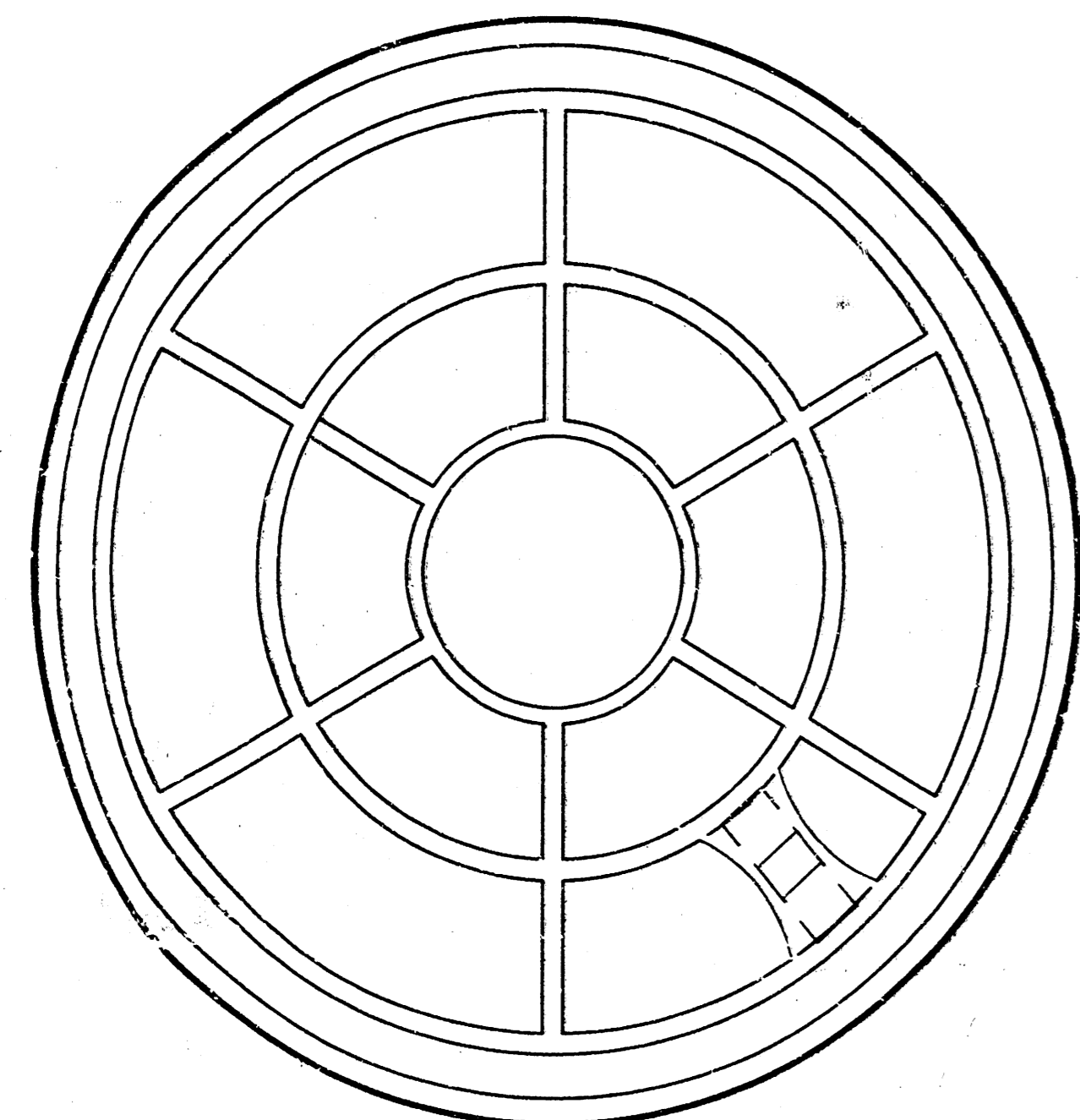
DESIGN C.O.W.	DRAWN Staff	APPROVED	DATE	SCALE None
------------------	----------------	----------	------	---------------

SHEET
8
 OF
11

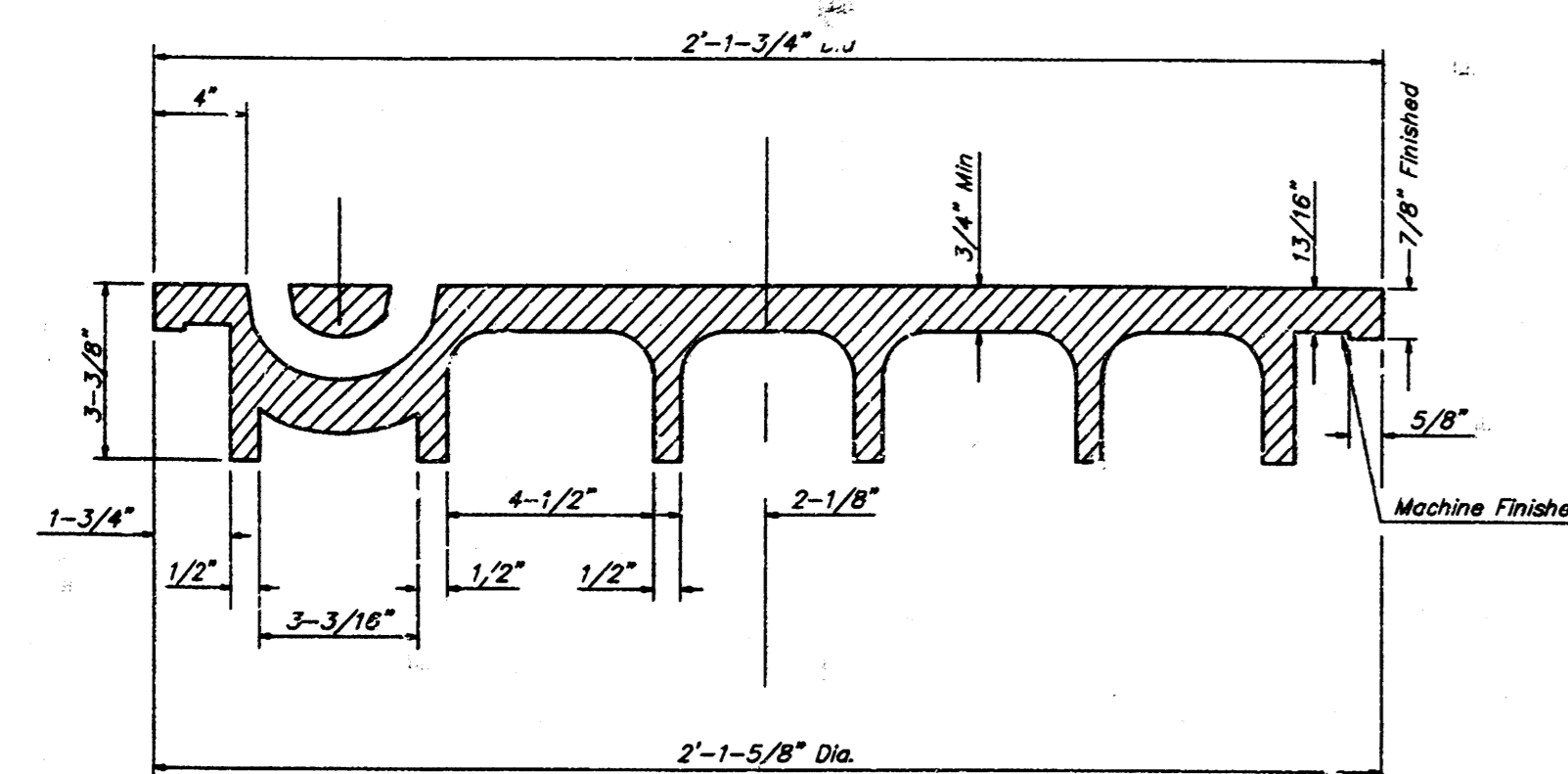
MANHOLE COVER
Weight = 180 Lbs.



TOP VIEW



BOTTOM VIEW

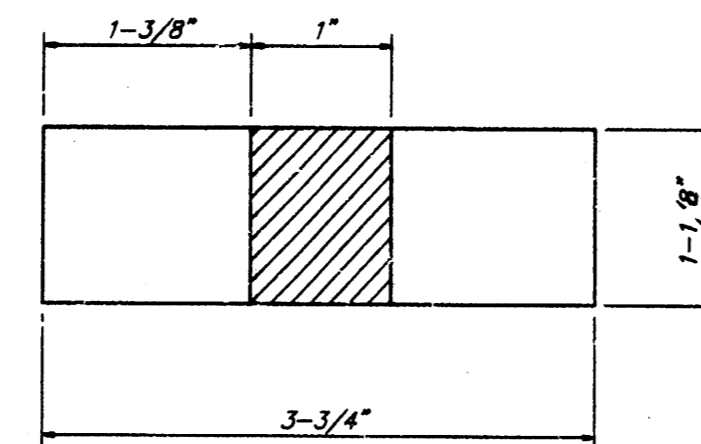


SECTION VIEW

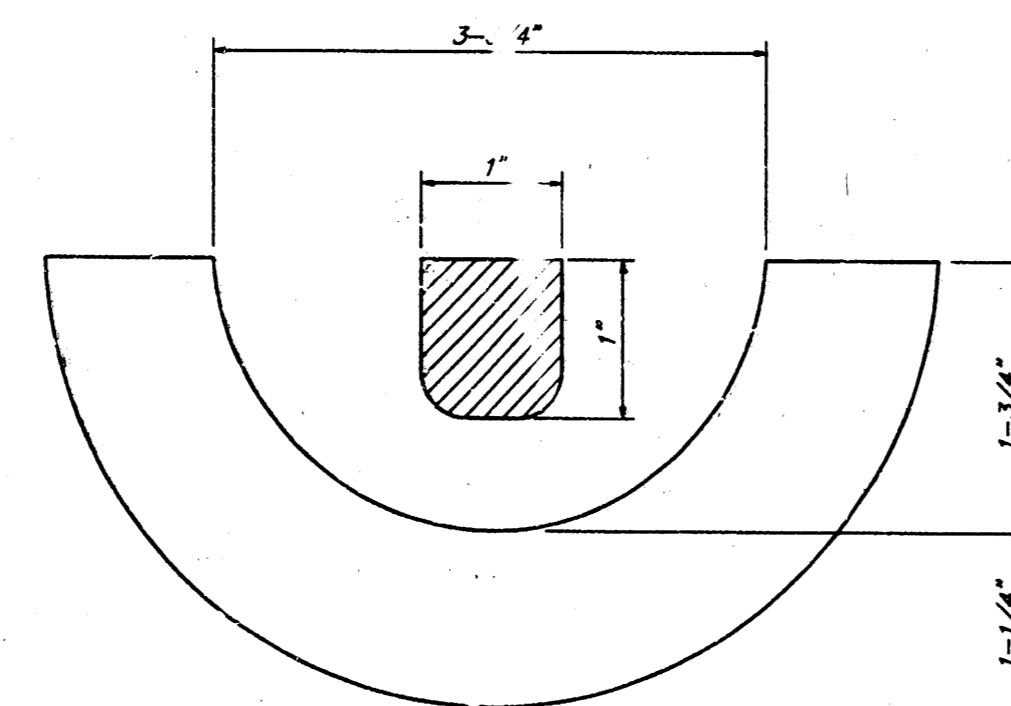
MANHOLE FRAME AND COVER DETAIL

ADOPTED AS STANDARD DESIGN BY
CITY OF WICHITA, KANSAS

PICKHOLE DETAIL

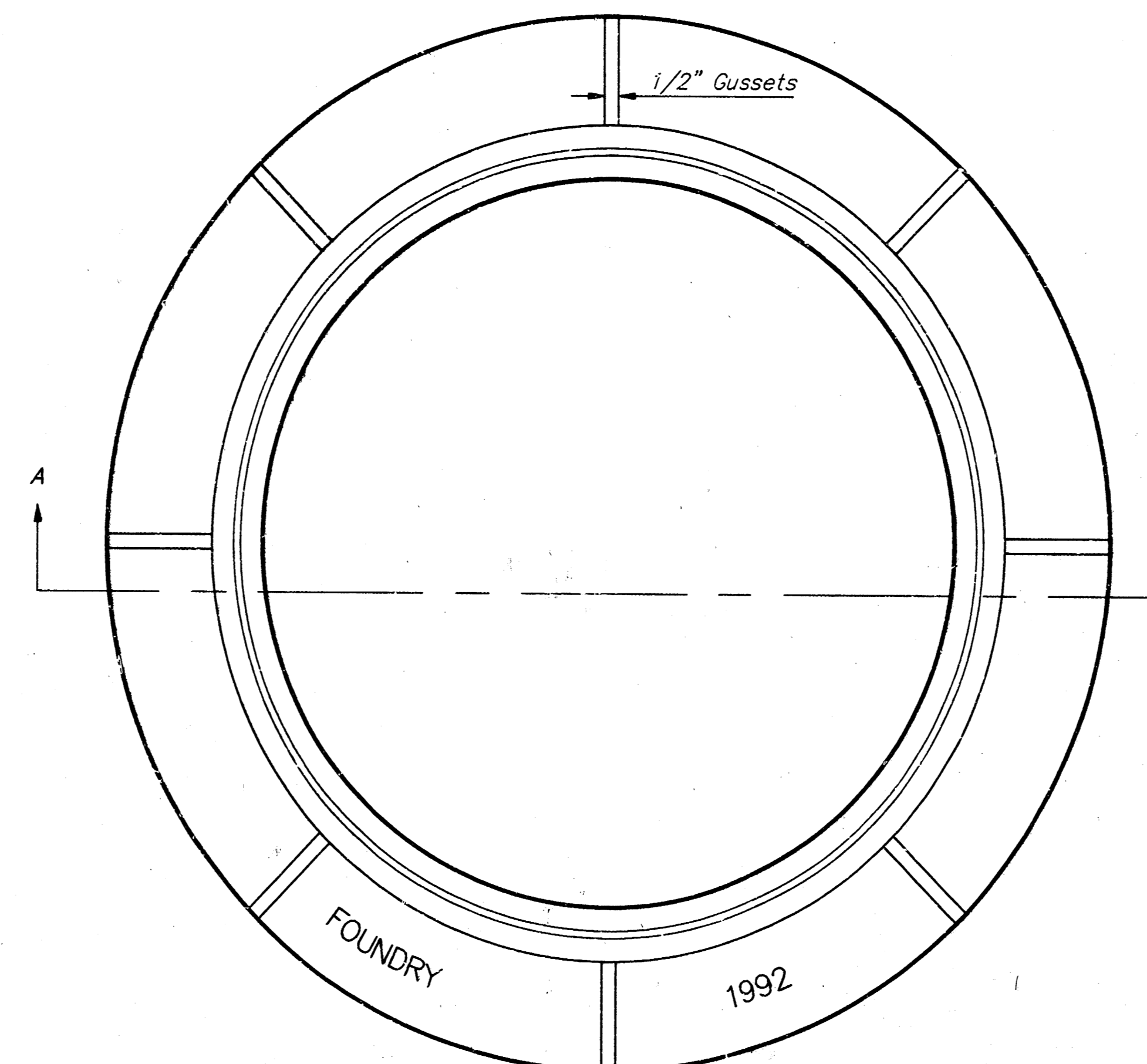


TOP VIEW

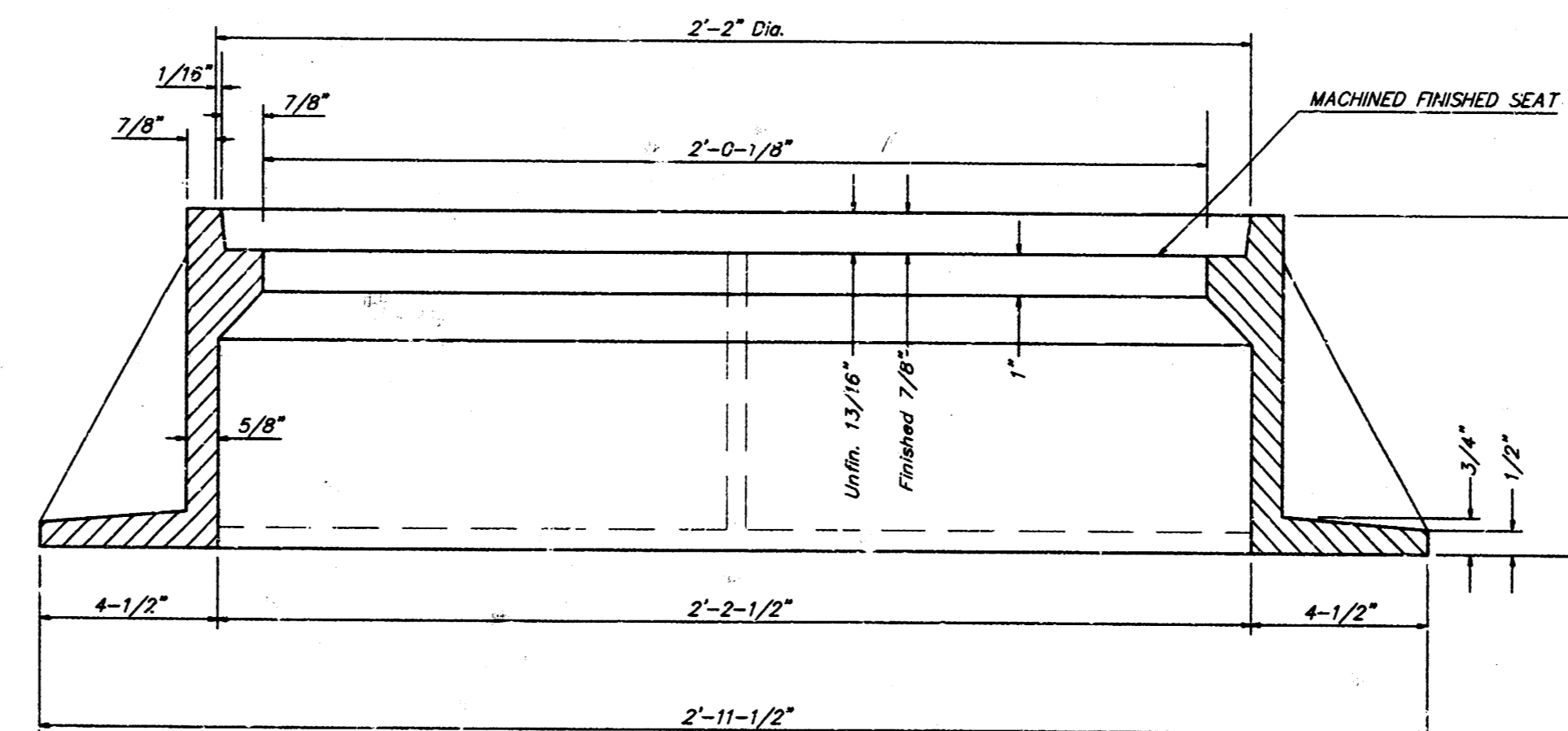


SECTION VIEW

MANHOLE FRAME
Weight = 240 Lbs.



TOP VIEW



SECTION A-A

GENERAL NOTES

MANHOLE CASTINGS SHALL BE MANUFACTURED USING GOOD QUALITY GRAY IRON CONFORMING TO CLASS 30 OF A.S.T.M. DESIGNATION A-48. DIMENSIONS AND WEIGHTS SHOWN ON THE DETAILED DRAWINGS SHALL BE CONSIDERED AS MINIMUM REQUIREMENTS AND ANY DEVIATIONS FROM THE DIMENSIONS SHOWN MUST BE SPECIFICALLY APPROVED. THE FINISHED CASTINGS SHALL BE OF UNIFORM QUALITY, FREE FROM BLOWHOLES, POROSITY, HARD SPOTS, SHRINKAGE DISTORTIONS OR OTHER DEFECTS.

MANHOLE CASTINGS SHALL BE COATED WITH AN ASPHALT PAINT RESULTING IN A SMOOTH, TOUGH AND TENACIOUS COATING WHICH IS NOT BRITTLE OR TACKY.

MANHOLE CASTINGS SHALL BE MANUFACTURED SUCH THAT A COVER MANUFACTURED BY ANY ONE FOUNDRY WILL FIT INTERCHANGEABLY INTO A FRAME MANUFACTURED BY ANOTHER FOUNDRY AND STILL MEET ALLOWABLE CLEARANCES AND NON-ROCKING REQUIREMENTS. THIS WILL REQUIRE MANUFACTURING OF THE MATCHING FACES ON THE COVER AND THE FRAME TO CLOSE TOLERANCES.

THE OUTSIDE CIRCUMFERENCE OF THE VERTICAL FACE OF THE COVER AND THE INSIDE CIRCUMFERENCE OF THE VERTICAL FACE IN THE FRAME RECESS SHALL BE MANUFACTURED TO TOLERANCES SUCH THAT THE CLEARANCE BETWEEN THE COVER AND FRAME WILL NOT EXCEED 1/8" AT ANY POINT AROUND THE CIRCUMFERENCE OF THE COVER. THE SEATING SURFACES BETWEEN THE COVER AND FRAME SHALL BE MACHINED SUCH AS THESE SURFACES SHALL MAKE FULL CONTACT FOR THEIR FULL CIRCUMFERENCE TO PRECLUDE THE COVER FROM ROCKING IN THE FRAME.

THE MANHOLE FRAME AND COVER SHALL BE MARKED WITH LETTERING INDICATING THE NAME OF THE MANUFACTURER AND THE YEAR WHEN THE COVER OR FRAME WAS CAST. THE COVER SHALL BE FURTHER IDENTIFIED WITH REGARDS TO OWNERSHIP USING LETTERS AT LEAST 1 INCH IN HEIGHT. THIS IDENTIFICATION SHALL BE "CITY OF WICHITA SEWER DEPARTMENT". THE WORD DEPARTMENT MAY BE ABBREVIATED. THE TEXTURE OF THE TOP SURFACE OF THE COVER SHALL BE MANUFACTURED IN A CHECKERED PATTERN DESIGN AS INDICATED ON THE DRAWINGS. SMOOTH BLOCKOUTS SHALL BE UTILIZED TO HIGHLIGHT THE LETTERING ON THE COVER SURFACE. THE TOTAL AREA OF SMOOTH SURFACE BLOCKOUT SHALL NOT EXCEED THE AREA AS INDICATED ON THE DRAWING. POSITIONING OF SMOOTH BLOCKOUTS AND LETTERING MAY VARY FROM THAT SHOWN ON THE DETAILED DRAWING.

RIDGE ROAD	
STD. MANHOLE RING & COVER	
BAUGHMAN COMPANY P. A.	
ENGINEERING, SURVEYING, & PLANNING	
315-262-7271 • 315-ELIUS • WICHITA, KANSAS 67211	
PROJECT NUMBER	SHEET
488-78-245-2282-000-001	9
DESIGN	OF
DRAWN	11
APPROVED	
DATE	
SCALE	

