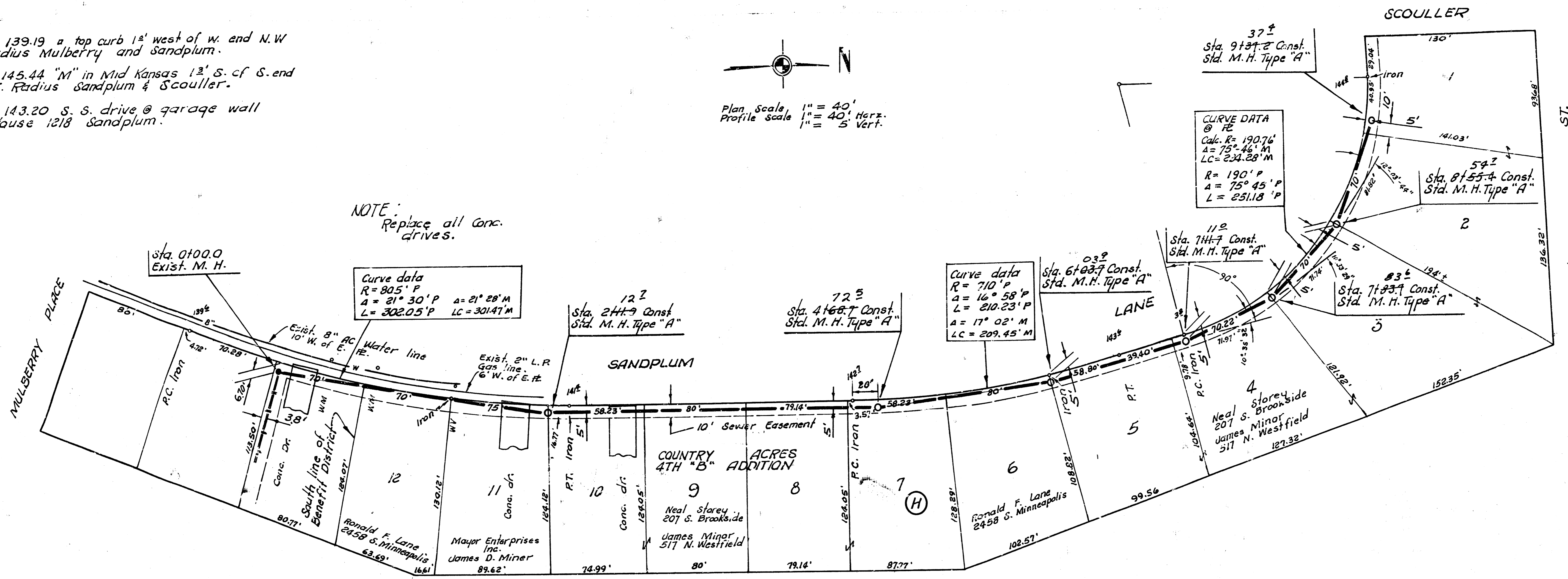


B. M. 139.19 a top curb 1' west of w. end N.W. Radius Mulberry and Sandplum.
 B. M. 145.44 "M" in Mid Kansas 12' S. of S. end S.E. Radius Sandplum & Scouller.
 B. M. 143.20 S. S. drive @ garage wall House 1218 Sandplum.

Plan Scale 1" = 40'
 Profile Scale 1" = 40' Horiz.
 1" = 5' Vert.

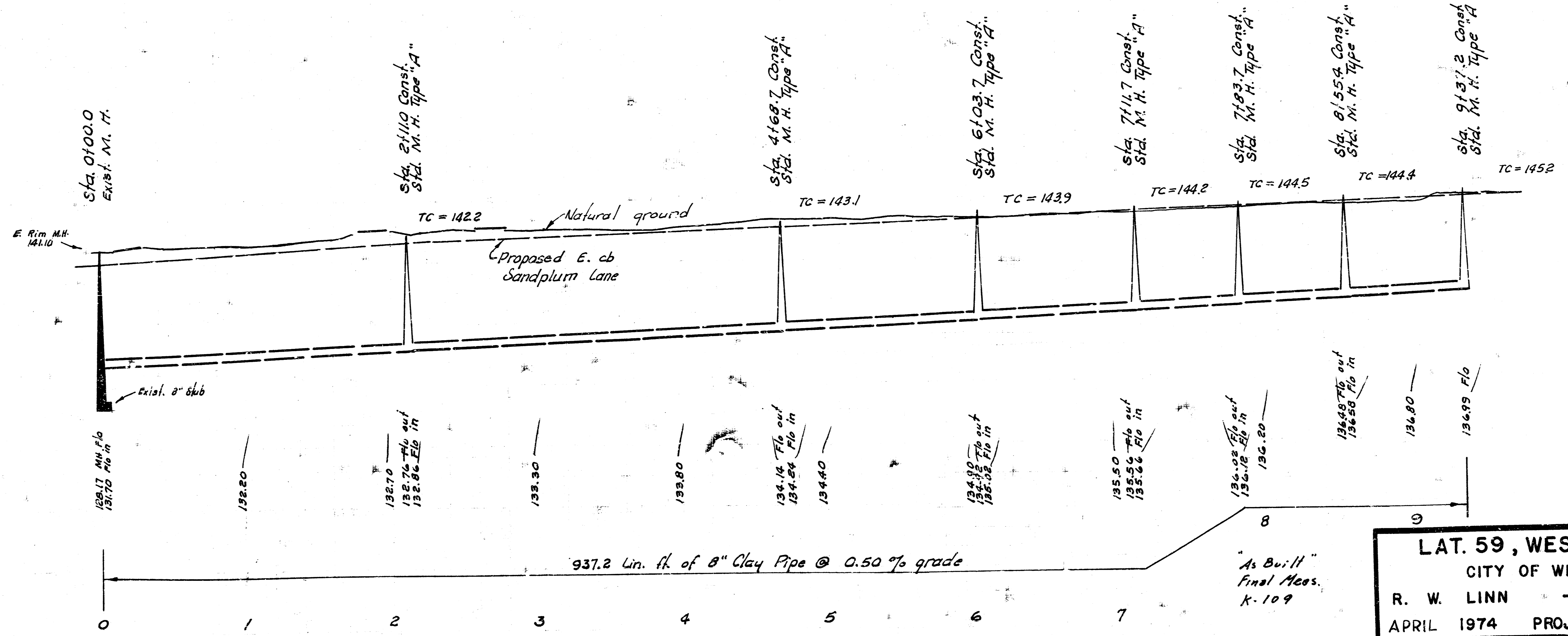
NOTE: Replace all Conc. drives.



CURVE DATA @ FE
 Calc. R = 190.76'
 A = 75° 46' P
 LC = 234.28' M
 R = 190' P
 A = 75° 45' P
 L = 231.18' P

Curve data
 R = 710' P
 A = 16° 58' P
 L = 210.23' P
 A = 17° 02' M
 LC = 209.45' M

Curve data
 R = 805' P
 A = 21° 30' P
 L = 302.05' P
 A = 21° 29' M
 LC = 301.47' M



LAT. 59, WESTLINK SEWER
 CITY OF WICHITA, KANSAS
 R. W. LINN — CITY ENGINEER
 APRIL 1974 PROJECT NO. DBKL 573085

"As Built"
 Final Meas.
 K-109

937.2 Lin. ft. of 8" Clay Pipe @ 0.50% grade