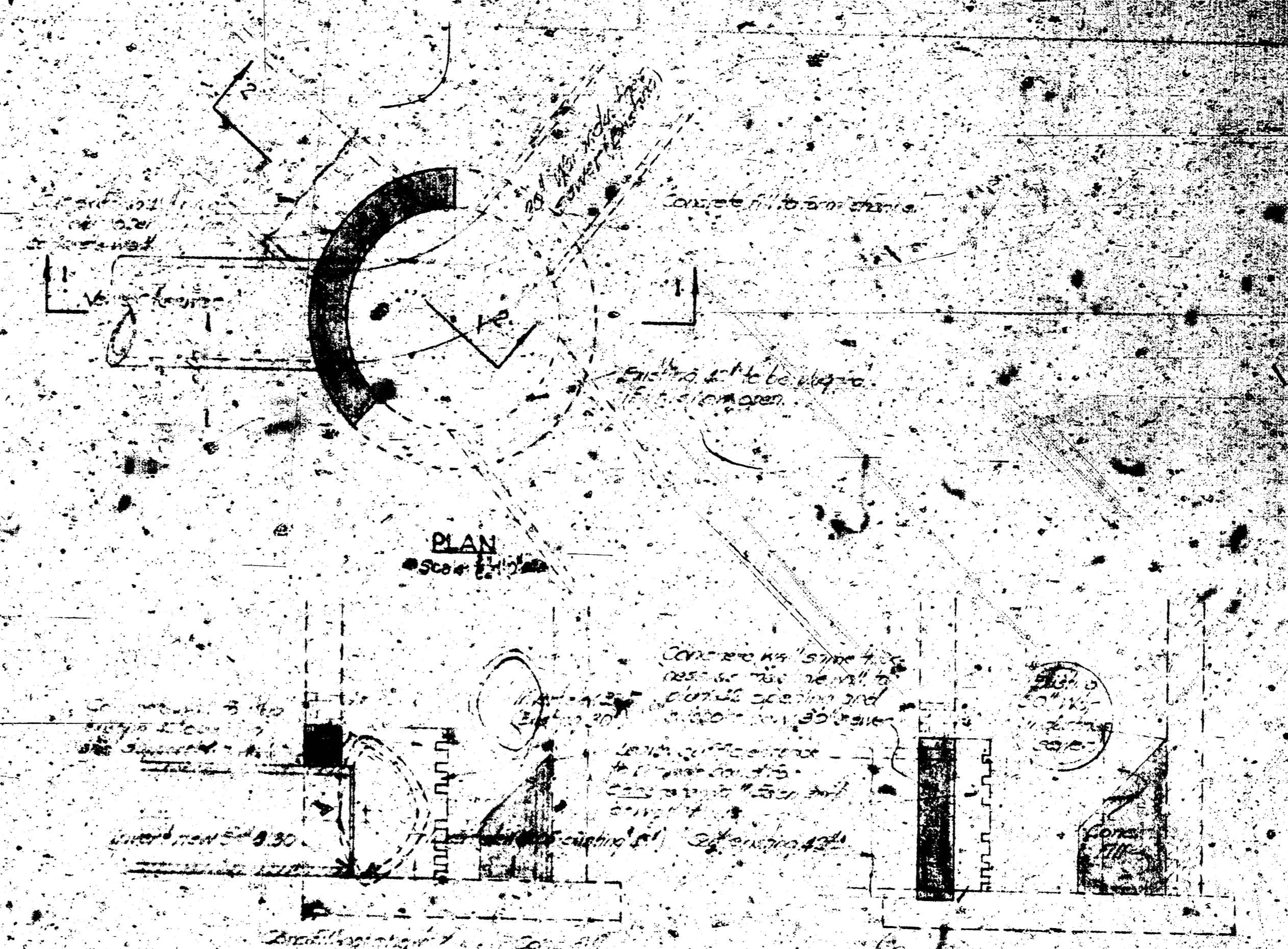
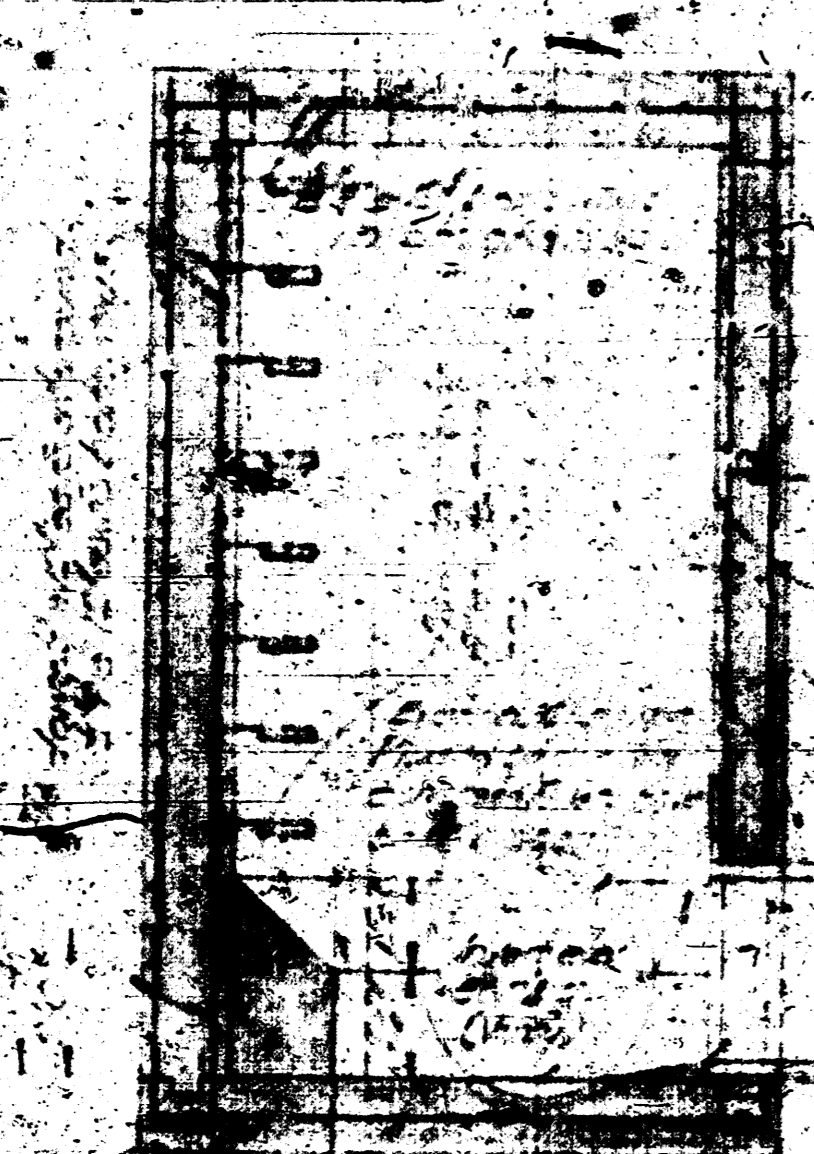


SECTIONAL PLAN  
Scale: 1/4" = 1'-0"



PLAN  
Scale: 1/4" = 1'-0"



SECTION A-A  
Scale: 1/4" = 1'-0"



SECTION B-B  
Scale: 1/4" = 1'-0"

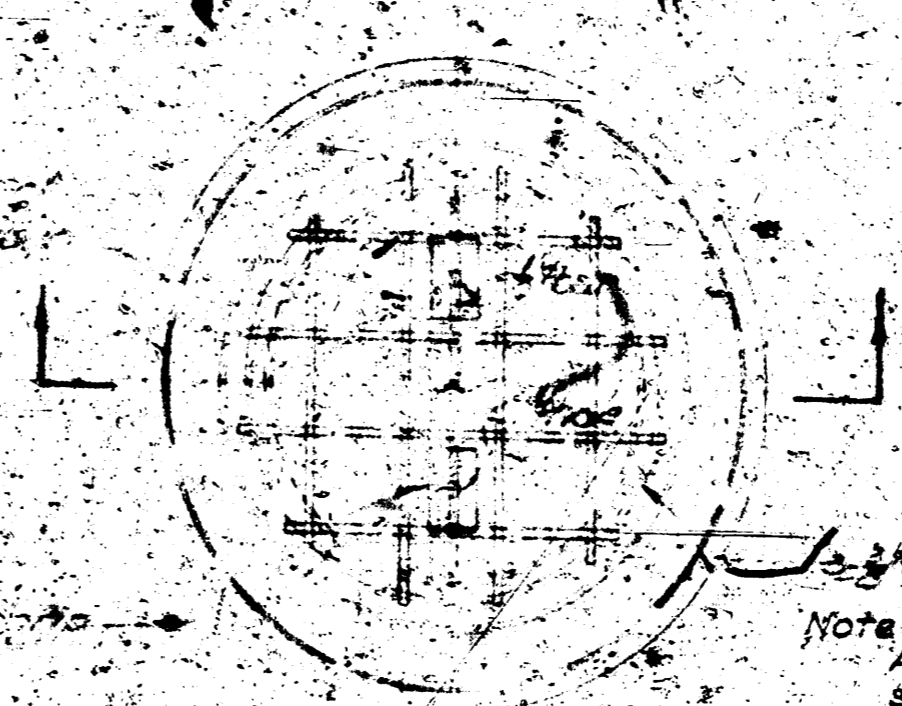
DISTRIBUTION STRUCTURE DETAILS  
STA. 12 + 55

SECTION 1-1  
Scale: 1/4" = 1'-0"

SECTION 2-2  
Scale: 1/4" = 1'-0"

DETAILS OF 30" SEWER AT EXISTING MANHOLE - STA. 12 + 74

Note: Sewer pipe to be 30" diameter, 12' long, with 12" depth of bedding. All pipe to be laid on 4" sand. All pipe to be laid on 4" sand.



PLAN

Note: Factory built rings & covers, A.C.S.I. Std. or equal, as per specifications may be used in lieu of design indicated.

SECTION  
CONCRETE MANHOLE RING & COVER  
Scale: 1/4" = 1'-0"

10-14-43	Added Manhole & Stationing	L.S.F.
Revised Date	By	
WICHITA KANSAS		
WAR INDUSTRIES SEWER EXTENSION		
DISTRIBUTION STRUCTURE AND MANHOLE DETAILS		
BLAIR & VEATCH CONSULTING ENGINEERS, KANSAS CITY, MO. AUGUST 1943		
DESIGNED BY	TRACED BY	SHEET 2 OF 3
APPROVED	CHECKED	
	DATE	

