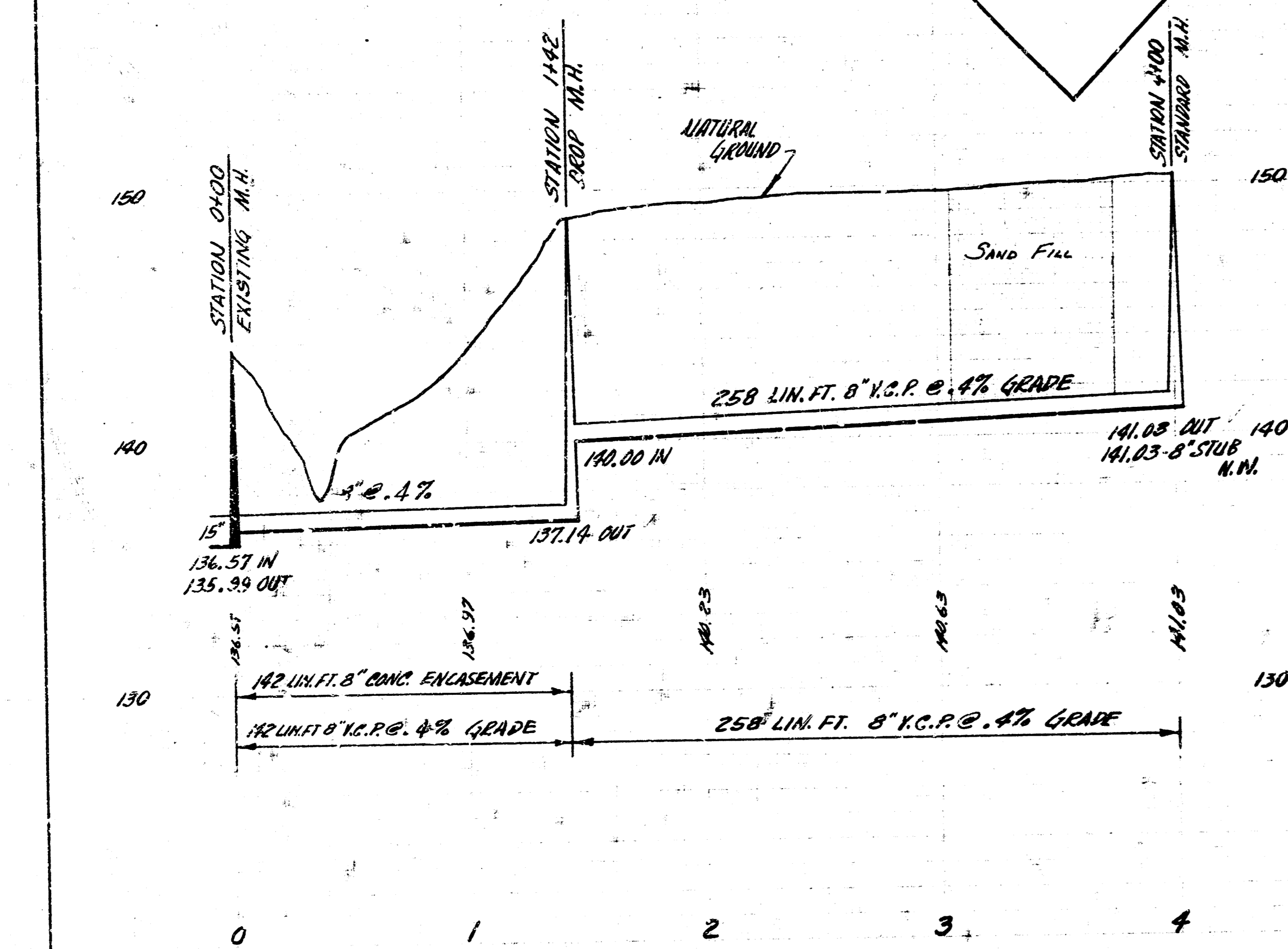
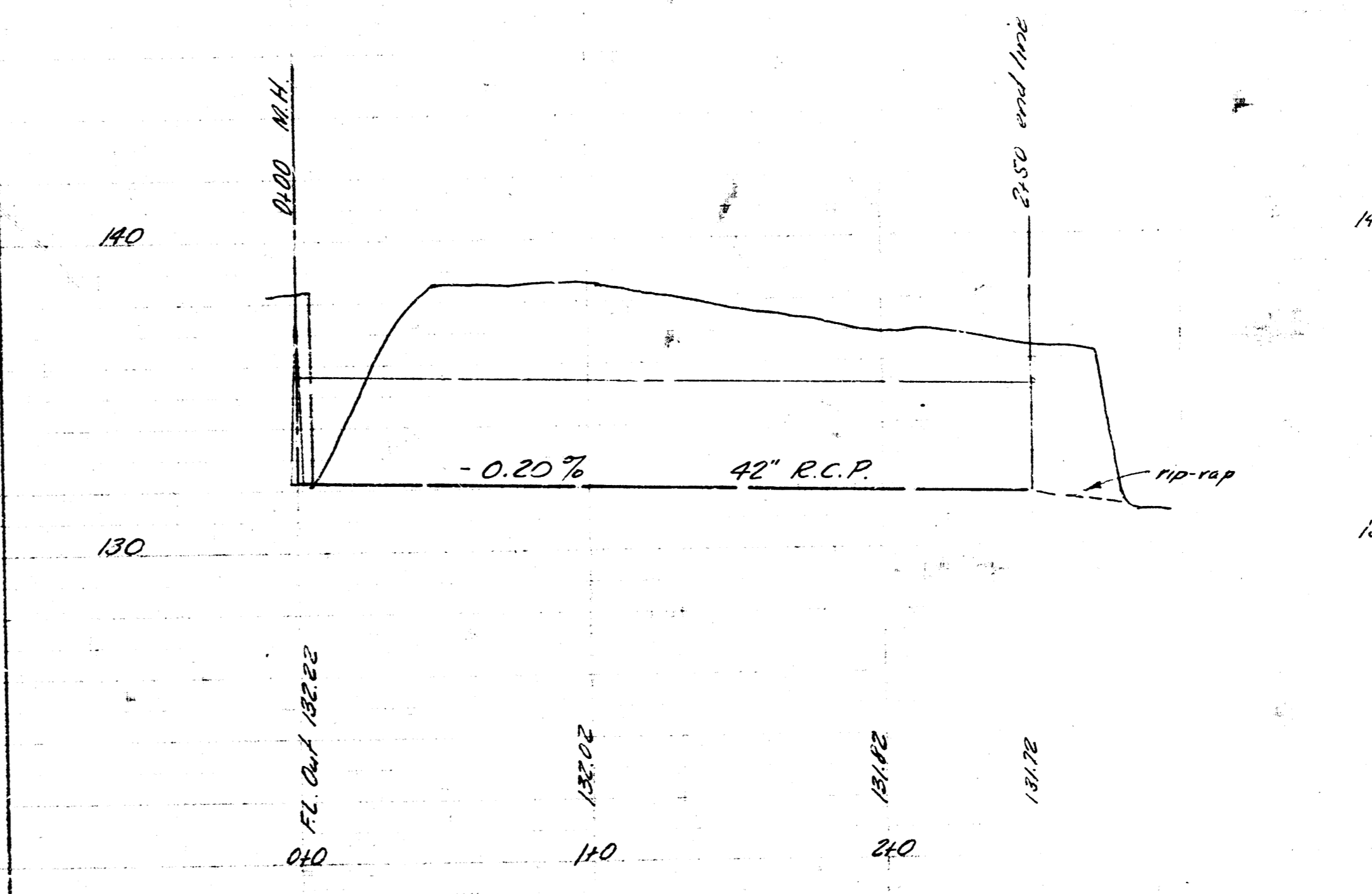
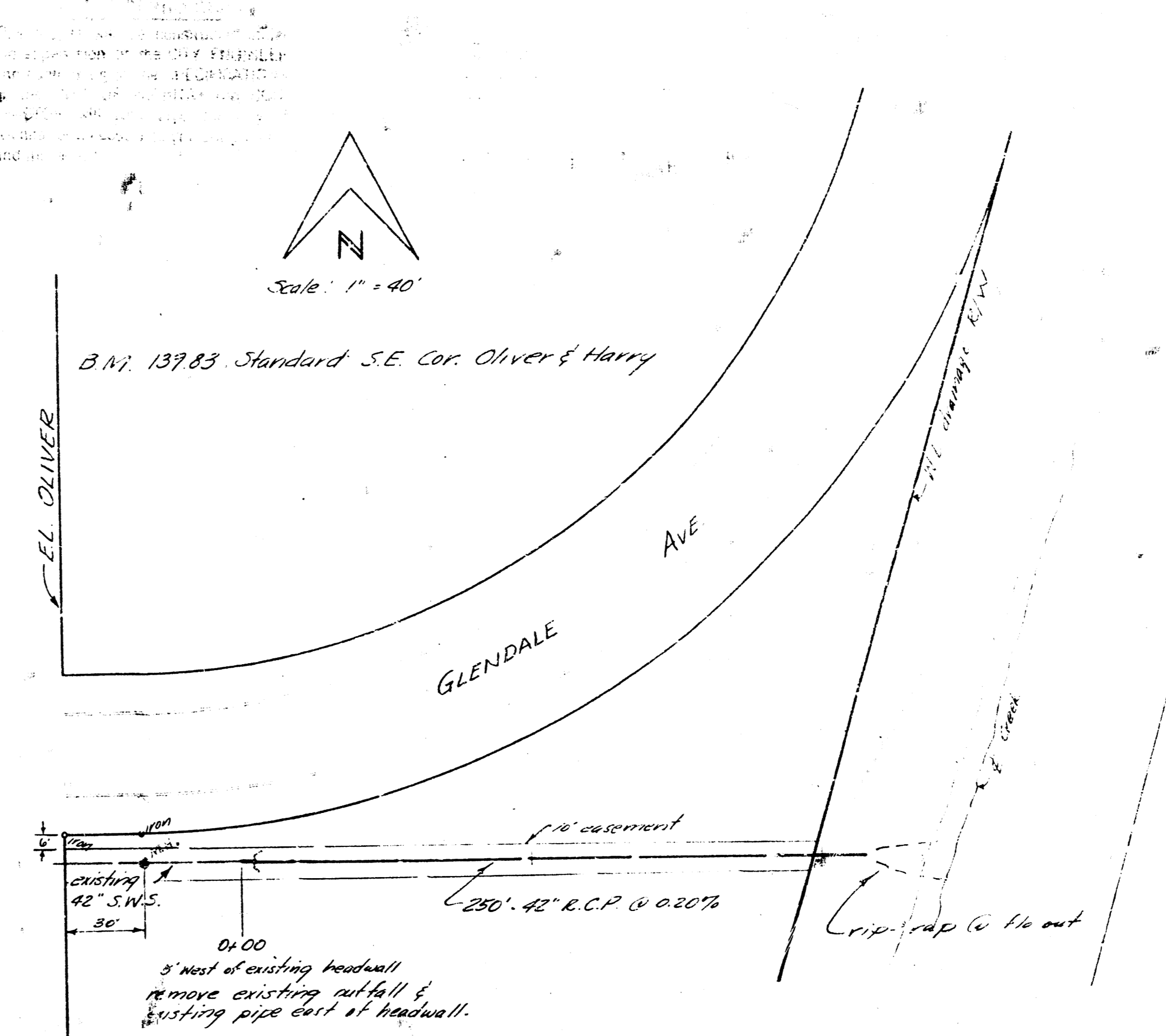


B.M. 143.43 30. RIM M.H. STATION 0+00  
 F.M. 151.73 + ON TOP W. HANDRAIL POST  
 S.S. R.C.B.C. 150' E OF BONNIE BRAE ON DOUGLAS



LAT. 16 WAR INDUSTRIES SEWER  
 CITY OF WICHITA, KANSAS  
 B.E. SMITH CITY ENGINEER  
 PRIVATE JOB DATE - FEB. 1957



EXTENSION TO HILLTOP MANOR  
 STORM WATER SEWER  
 CITY OF WICHITA, KANSAS  
 B.E. SMITH - CITY ENGINEER  
 JUNE, 1957 PRIVATE JOB