

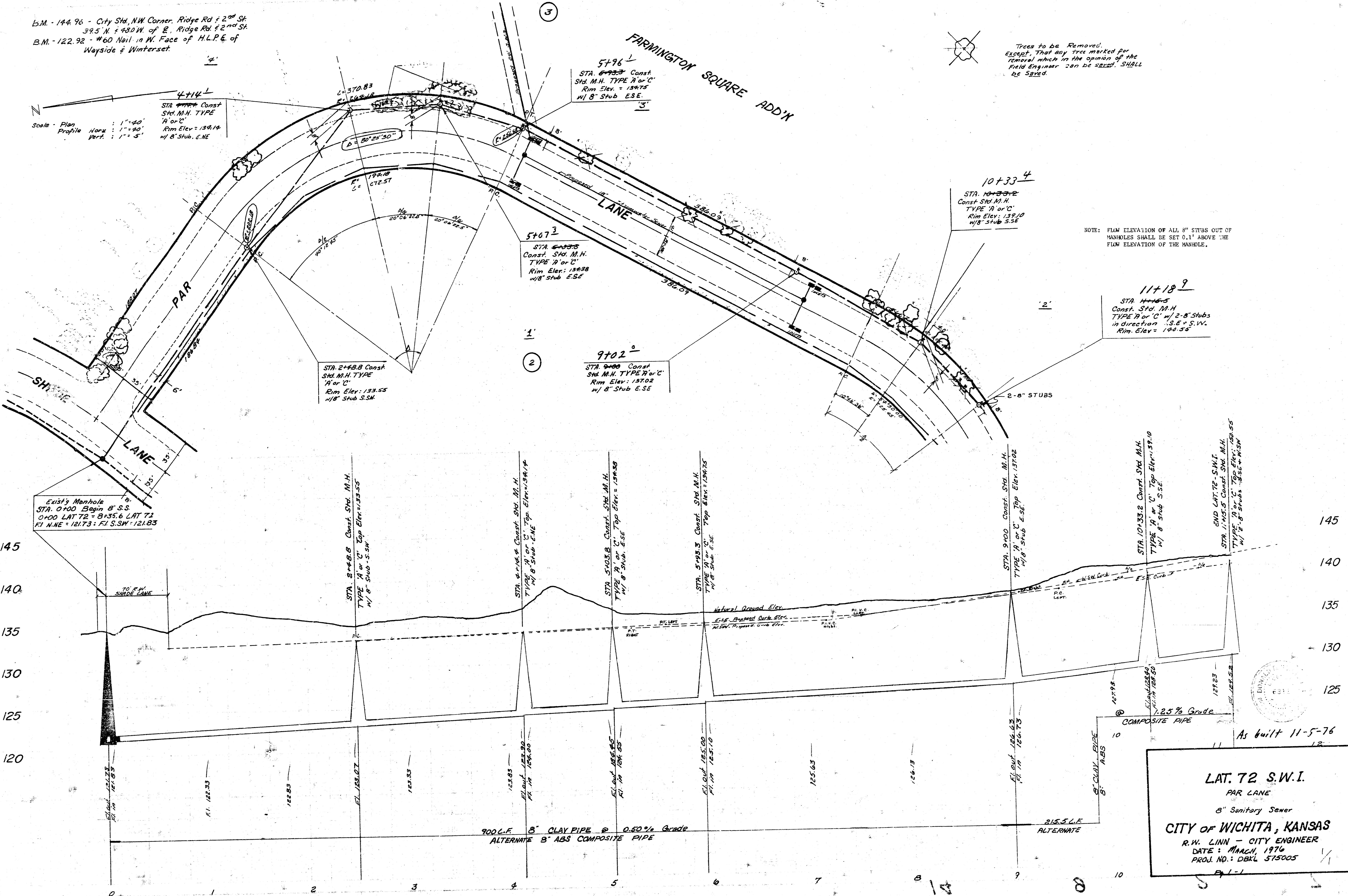
B.M. - 144.96 - City Std. NW Corner Ridge Rd & 2nd St
 39.5' N. & 48.0' W. of E. Ridge Rd & 2nd St
 B.M. - 122.92 - #60 Nail in W. Face of H.L.P.E. of
 Wayside & Winterset.

Scale - Plan 1" = 40'
 Profile 1" = 80'
 Horiz. 1" = 80'
 Vert. 1" = 5'

FARMINGTON SQUARE ADD'X
 LANE

Trees to be Removed
 Except That any tree marked for
 removal which in the opinion of the
 Field Engineer can be saved, SHALL
 be saved.

NOTE: FLOW ELEVATION OF ALL 8" STUBS OUT OF
 MANHOLES SHALL BE SET 0.1' ABOVE THE
 FLOW ELEVATION OF THE MANHOLE.



Existing Manhole
 STA. 0+00 Begin 8" S.S.
 0+00 LAT 72 = B+35.6 LAT 72
 FI N.N.E. = 121.73; FI S.S.W. = 121.85

STA. 2+48.8 Const. Std. M.H.
 TYPE 'A' or 'C'
 Rim Elev. = 133.55
 w/ 8" Stub S.S.W.

STA. 5+07.3 Const. Std. M.H.
 TYPE 'A' or 'C'
 Rim Elev. = 134.38
 w/ 8" Stub E.S.E.

STA. 9+02.0 Const. Std. M.H.
 TYPE 'A' or 'C'
 Rim Elev. = 137.02
 w/ 8" Stub E.S.E.

STA. 5+96 Const. Std. M.H.
 TYPE 'A' or 'C'
 Rim Elev. = 134.35
 w/ 8" Stub E.S.E.

STA. 10+33.4 Const. Std. M.H.
 TYPE 'A' or 'C'
 Rim Elev. = 139.10
 w/ 8" Stub S.S.E.

STA. 11+18.9 Const. Std. M.H.
 TYPE 'A' or 'C' w/ 2-8" Stubs
 in direction S.E. & S.W.
 Rim Elev. = 144.55

STA. 2+48.8 Const. Std. M.H.
 TYPE 'A' or 'C' Top Elev. = 133.55
 w/ 8" Stub S.S.W.

STA. 5+07.3 Const. Std. M.H.
 TYPE 'A' or 'C' Top Elev. = 134.38
 w/ 8" Stub E.S.E.

STA. 9+02.0 Const. Std. M.H.
 TYPE 'A' or 'C' Top Elev. = 137.02
 w/ 8" Stub E.S.E.

STA. 5+96 Const. Std. M.H.
 TYPE 'A' or 'C' Top Elev. = 134.35
 w/ 8" Stub E.S.E.

STA. 10+33.4 Const. Std. M.H.
 TYPE 'A' or 'C' Top Elev. = 139.10
 w/ 8" Stub S.S.E.

STA. 11+18.9 Const. Std. M.H.
 TYPE 'A' or 'C' Top Elev. = 144.55
 w/ 8" Stub S.S.E.

END LAT. 72 - S.W.I.
 STA. 1+143.5 Const. Std. M.H.
 TYPE 'A' or 'C' Top Elev. = 129.55
 w/ 8" Stub S.S.E. & W.S.W.

900 L.F. 8" CLAY PIPE @ 0.50% Grade
 ALTERNATE 8" ABS COMPOSITE PIPE

215.5 L.F.
 ALTERNATE

LAT. 72 S.W.I.
 PAR LANE
 8" Sanitary Sewer
CITY OF WICHITA, KANSAS
 R.W. LINN - CITY ENGINEER
 DATE: MARCH, 1976
 PROJ. NO.: DBKL 575005



As built 11-5-76