

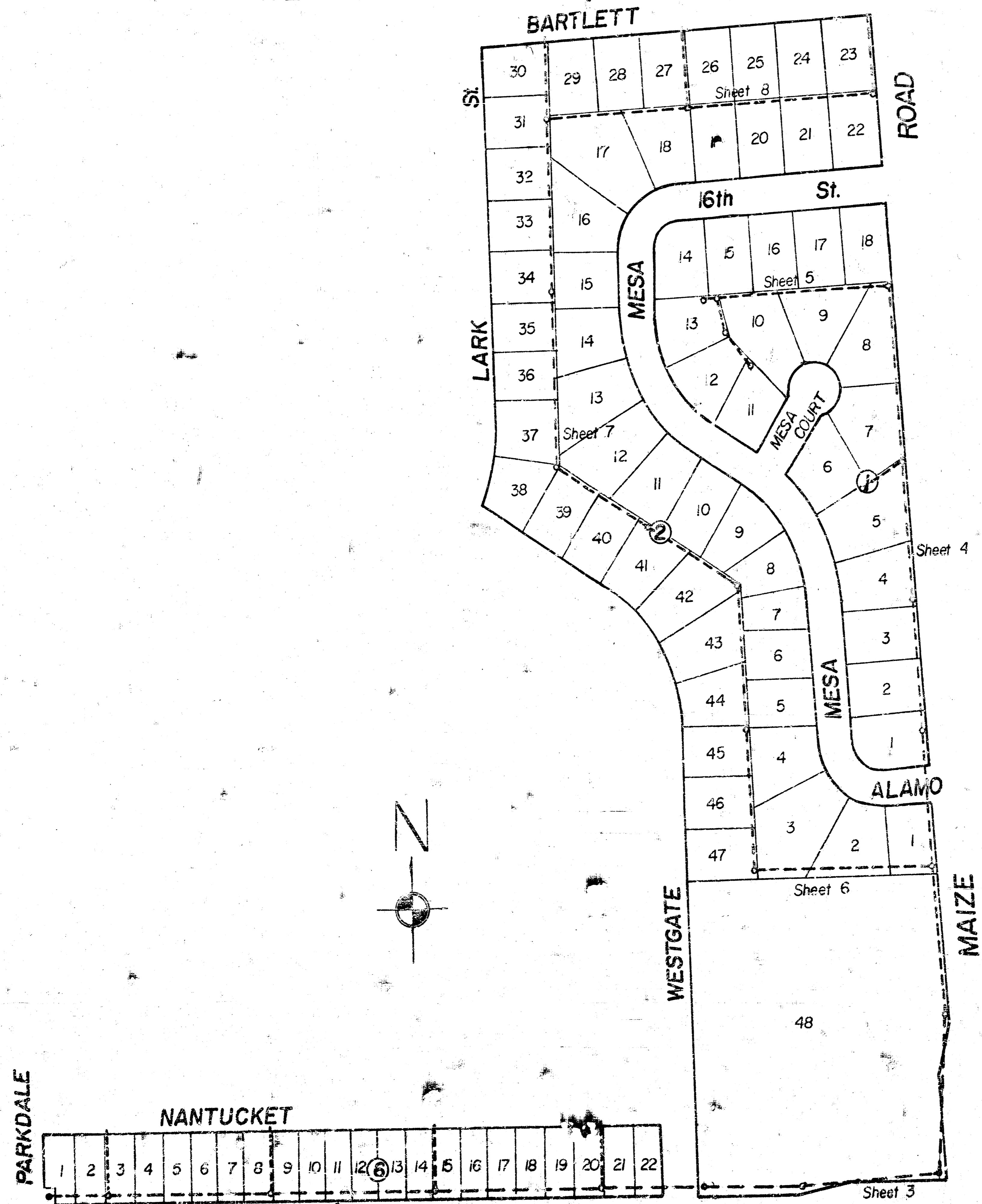
LAT 108 SOUTHWEST INTERCEPTOR

CITY OF WICHITA, KANSAS

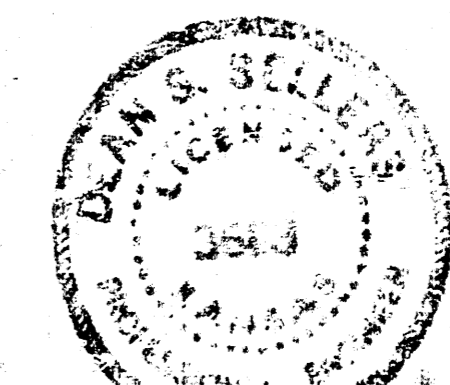
R. W. LINN CITY ENGINEER

Project Number DBKL577045

WESTLINK VILLAGE 14TH ADDITION



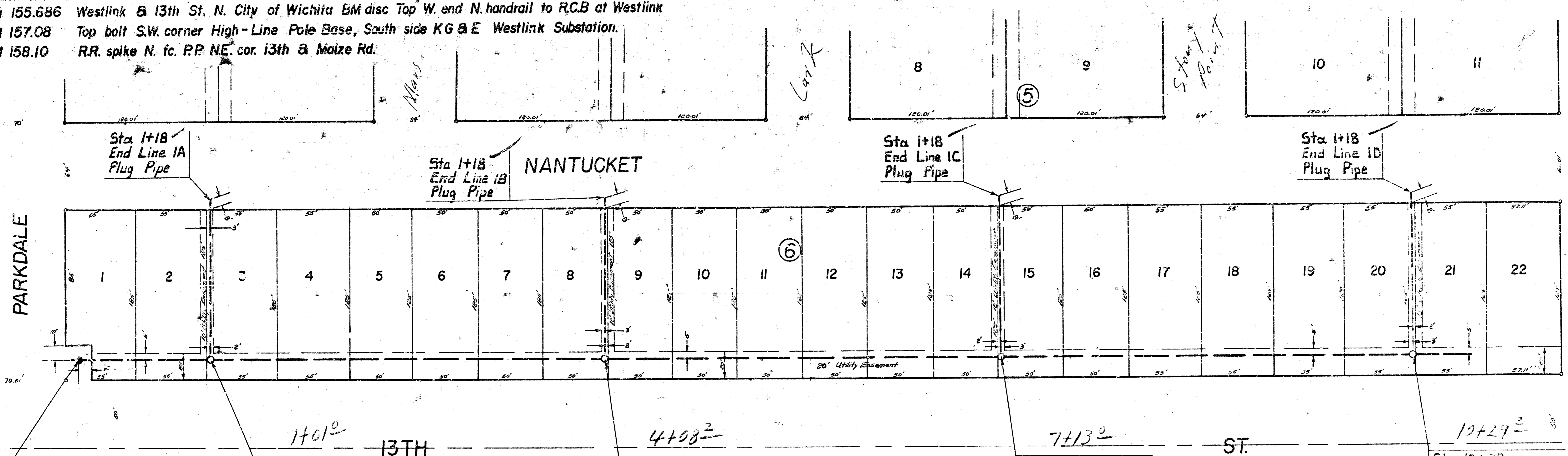
As built 3-15-78



BM 155.686 Westlink & 13th St. N. City of Wichita BM disc Top W. end N. handrail to R.C.B at Westlink
 BM 157.08 Top bolt S.W. corner High-Line Pole Base, South side KG & E Westlink Substation.
 BM 158.10 RR. spike N. fc. P.P. NE. cor. 13th & Maize Rd.

PARKDALE

WESTGATE



Sta 0+00
Exist. Wet Well
With B" Stub East & West
Sta 0+15 Begin Pipe

Sta 1+03
Const. Std. M.H.
Type "A" or "C"
Sta 0+00 Line IA

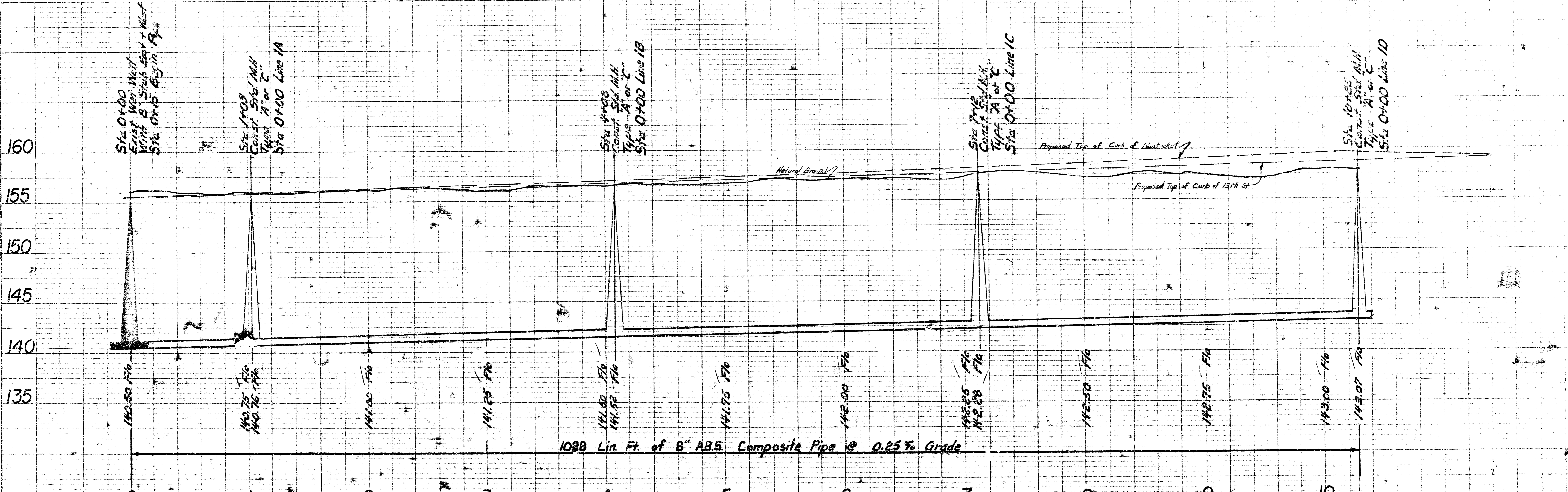
Sta 4+08
Const. Std. M.H.
Type "A" or "C"
Sta 0+00 Line IB

Sta 7+12
Const. Std. M.H.
Type "A" or "C"
Sta 0+00 Line IC

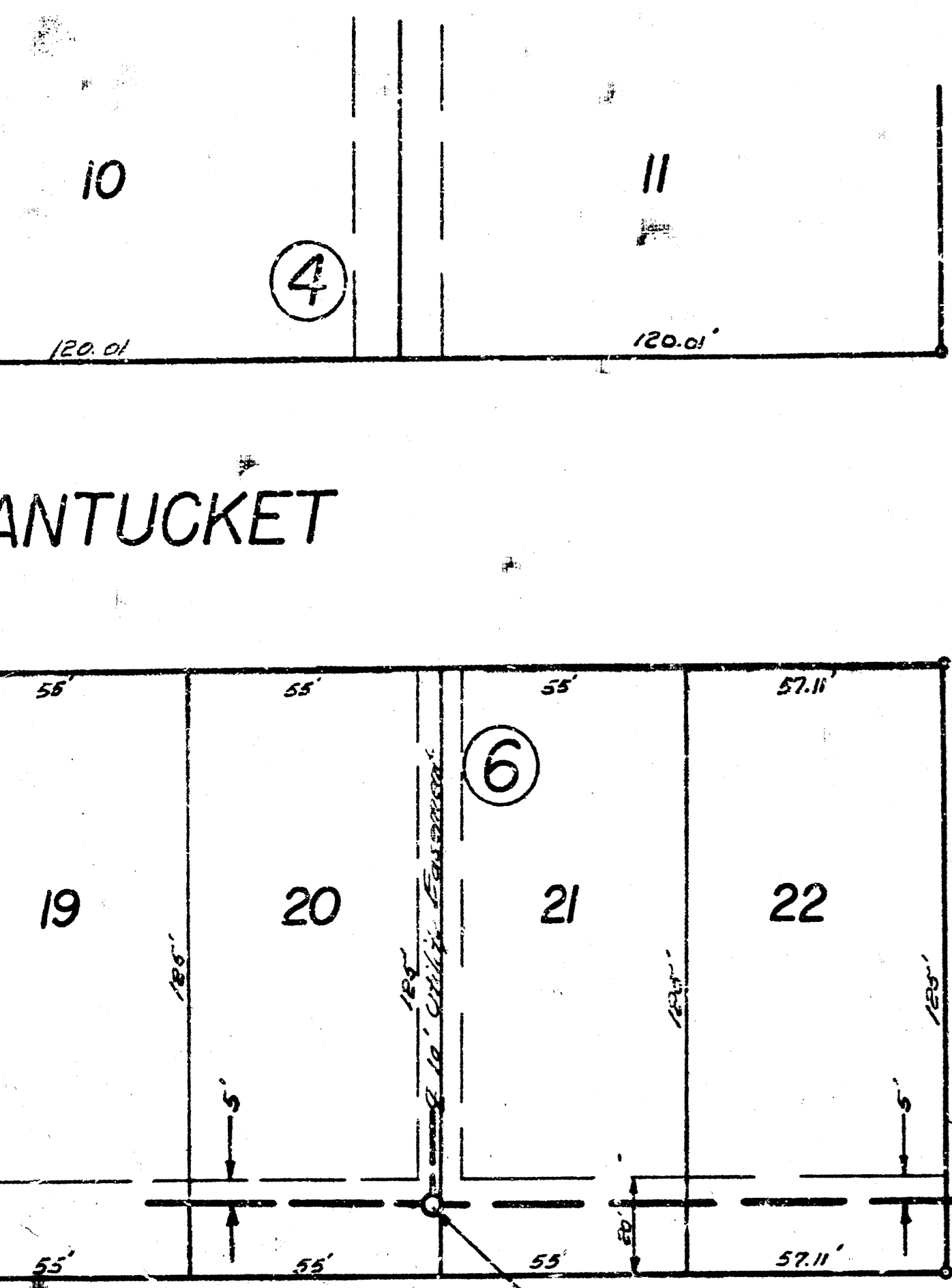
Sta 10+28
Const. Std. M.H.
Type "A" or "C"
Sta 0+00 Line ID

Note: For Profile on Lines IA, IB, IC, and ID See Sheet 9

Plan Scale 1" = 40'
 Profile Scale 1" = 40'
 1" = 5'



157.04 R.R. spike N. fc. P.P. approx. 200' S. & 100' W. of NW cor. Nantucket & Lark (4th P.P. W. Maize Rd.)

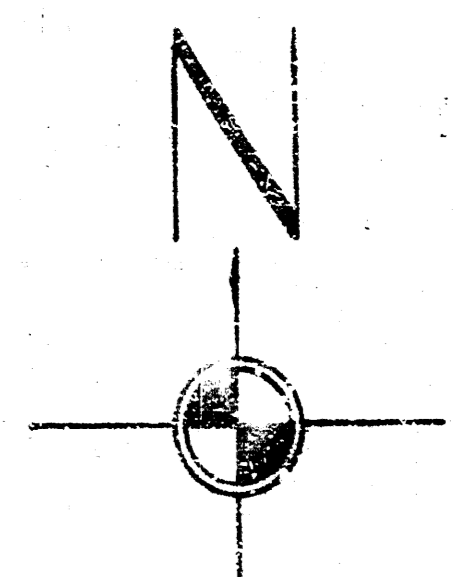


WESTGATE

Lot 48
②

19+32.0
Sta 19+30
Const. Std. M.H.
Type A or C

ROAD



Plan Scale 1" = 40'
Profile Scale 1" = 40' Horz.
1" = 5' Vert.

Sta 10+28
10+29.2
13TH

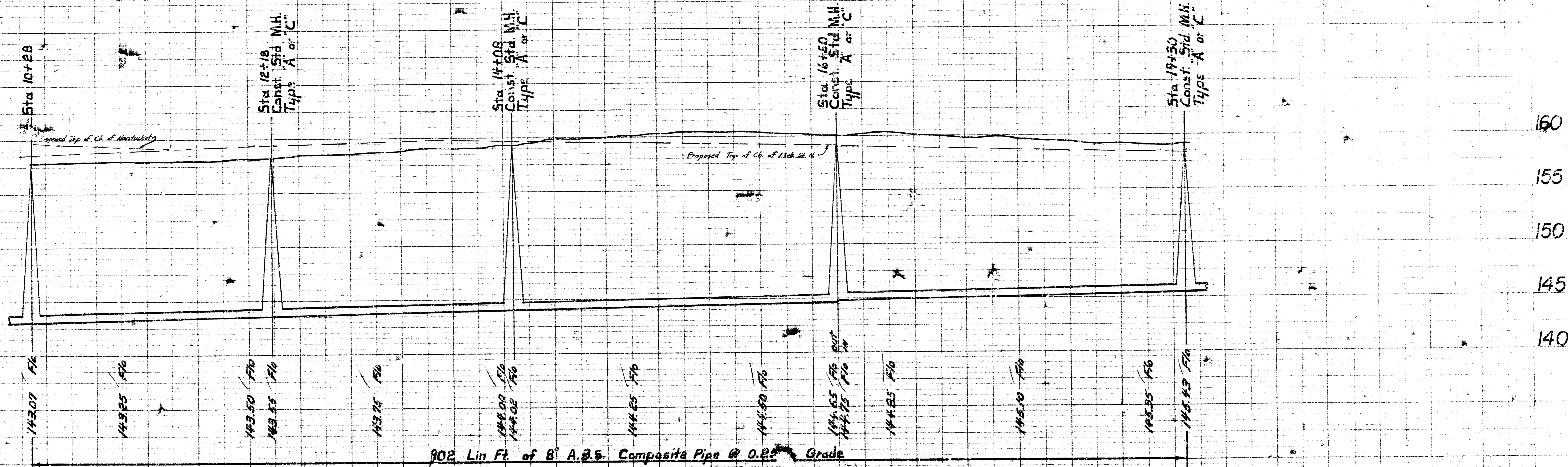
Sta 12+18
Const. Std. M.H.
Type A or C
12+18.0

Sta 14+08
Const. Std. M.H.
Type A or C
14+09.5

Sta 16+60
Const. Std. M.H.
Type A or C

ST.

S.E. corner 50' Sec 7-27-14

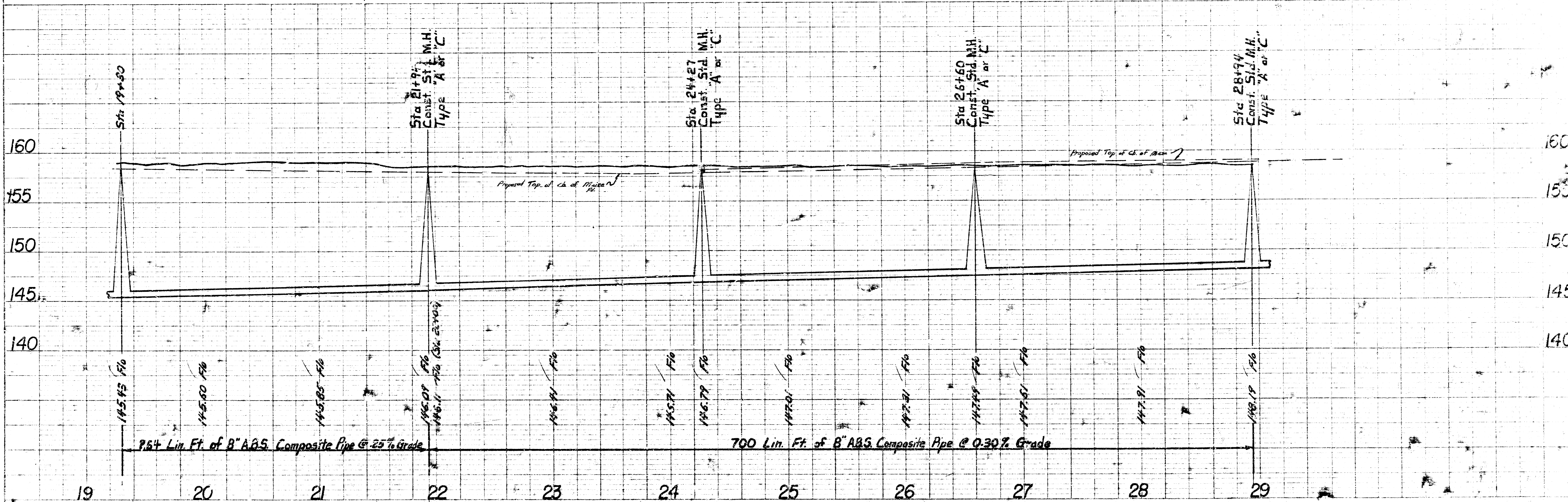
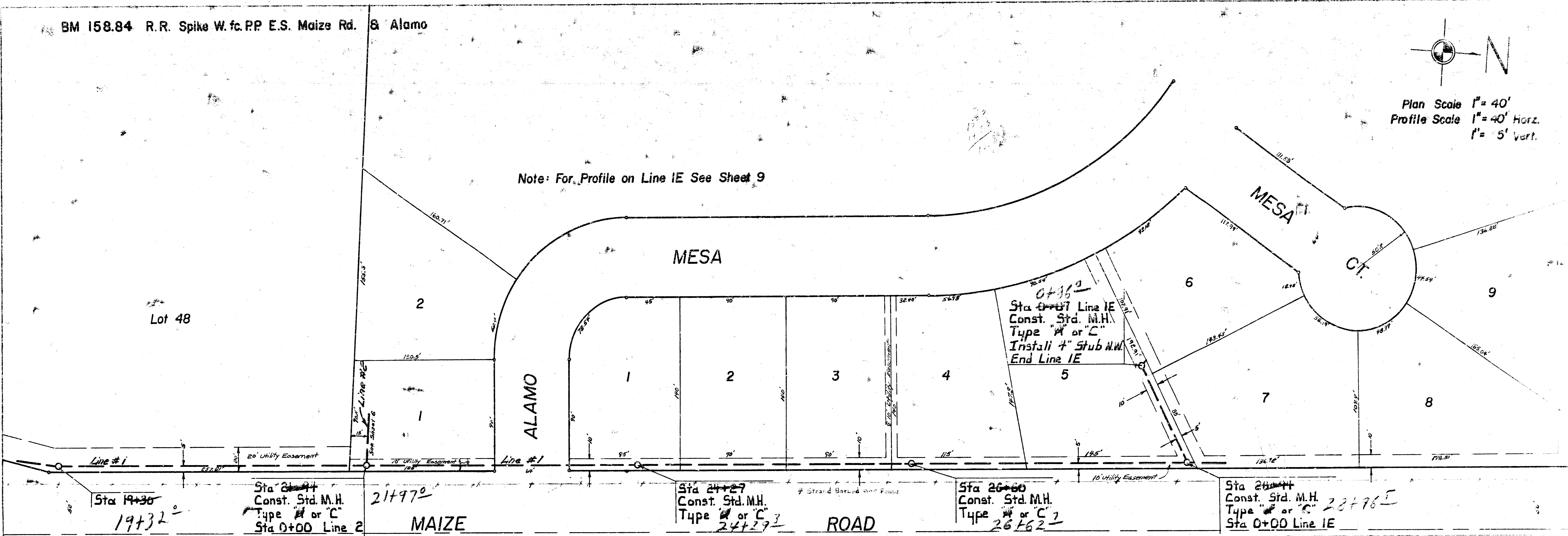


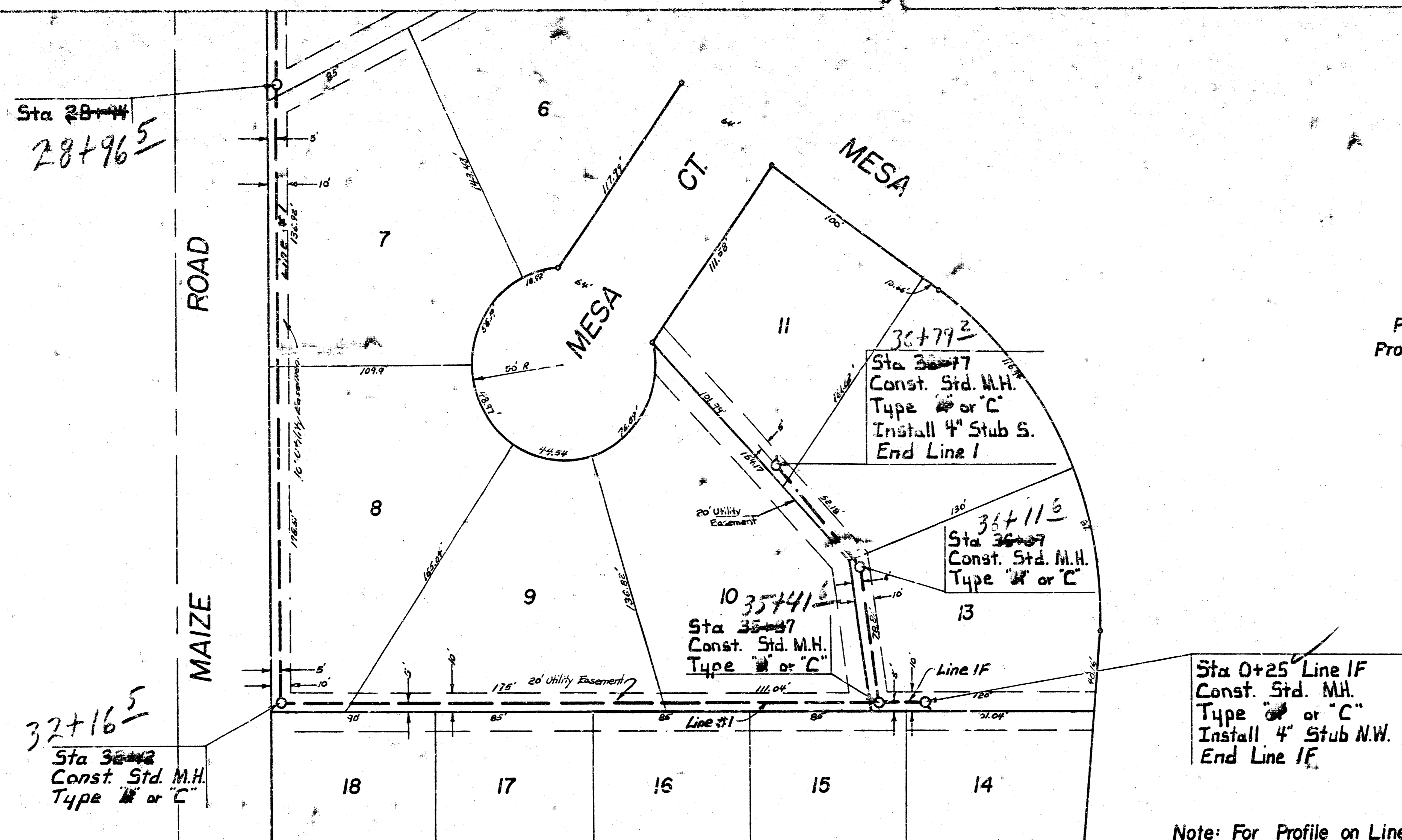
902 Lin Ft. of 8" A.B.S. Composite Pipe @ 0.2% Grade

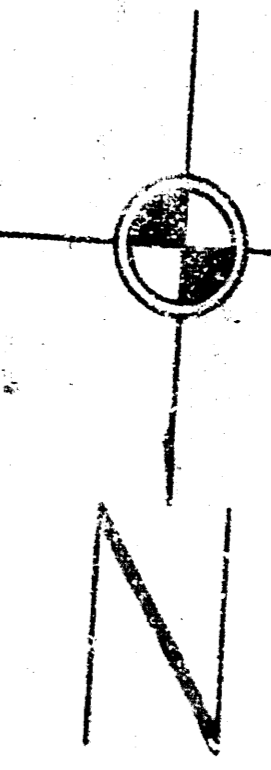
BM 158.84 R.R. Spike W. fc. PP E.S. Maize Rd. & Alamo

Plan Scale 1" = 40'
Profile Scale 1" = 40' Horiz.
1" = 5' Vert.

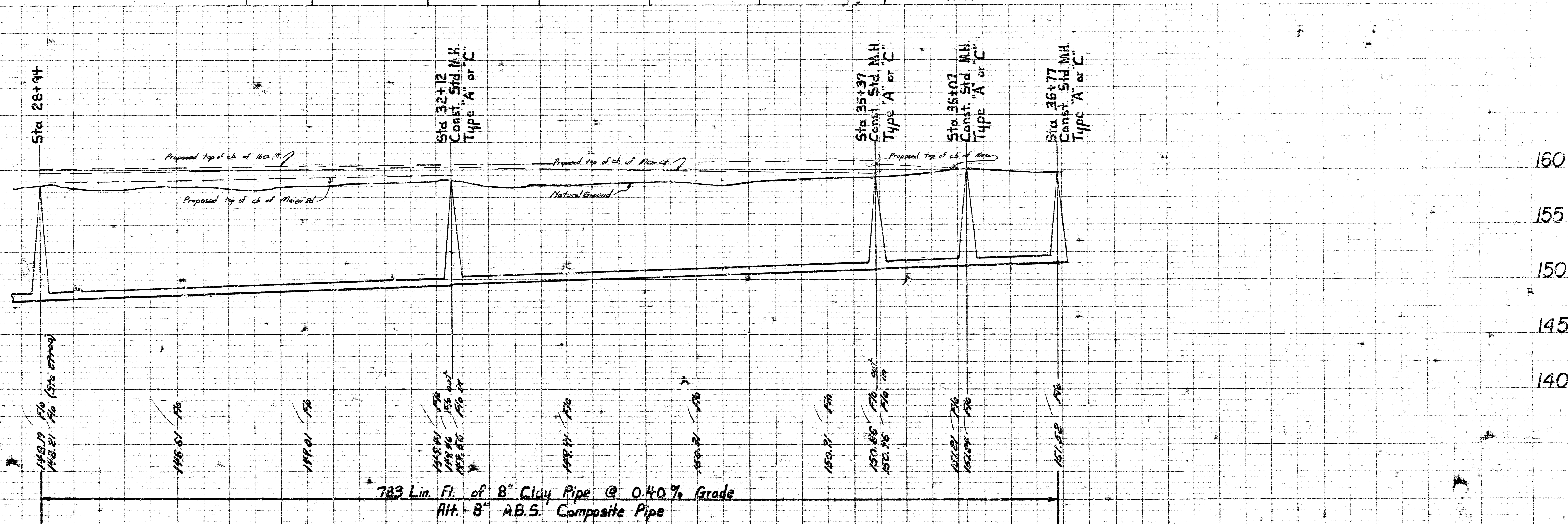
Note: For Profile on Line IE See Sheet 9

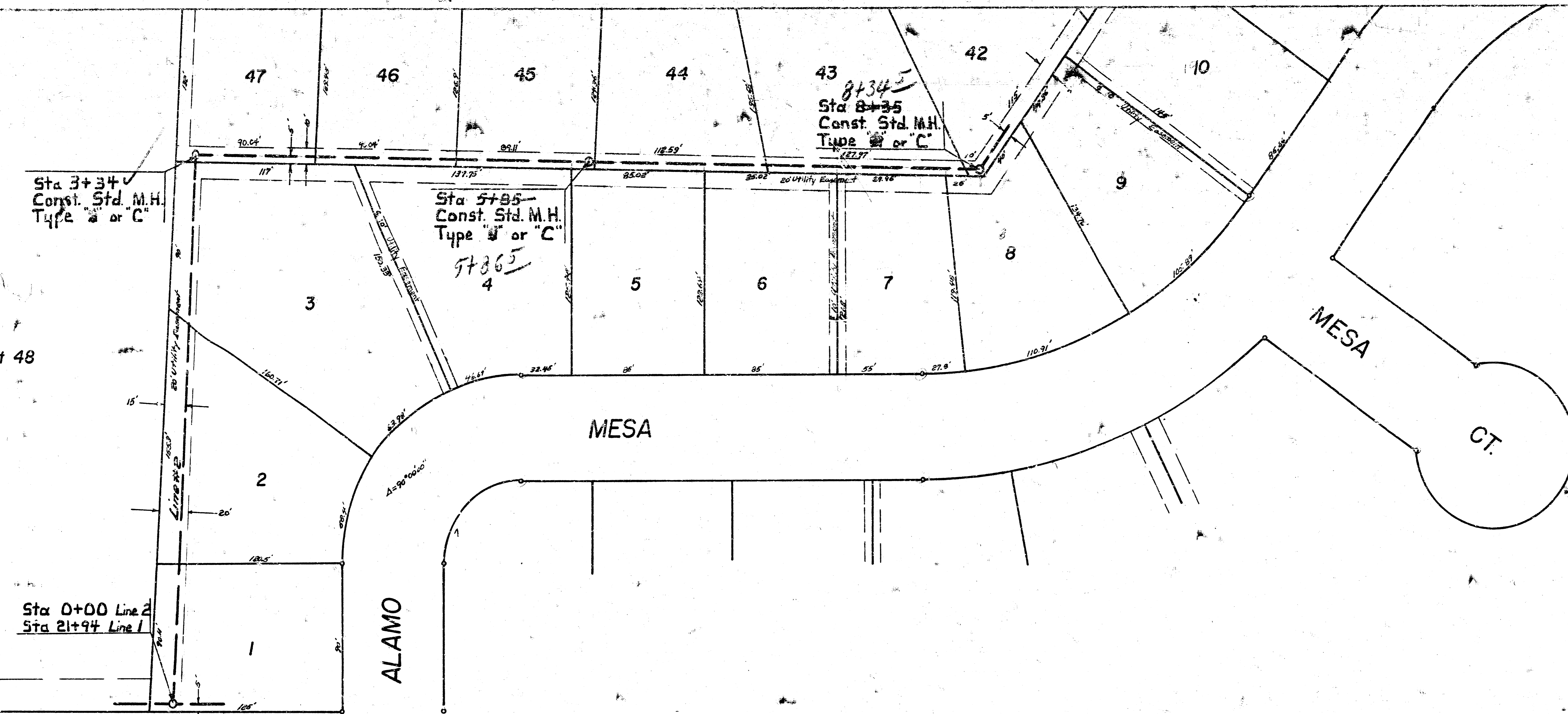




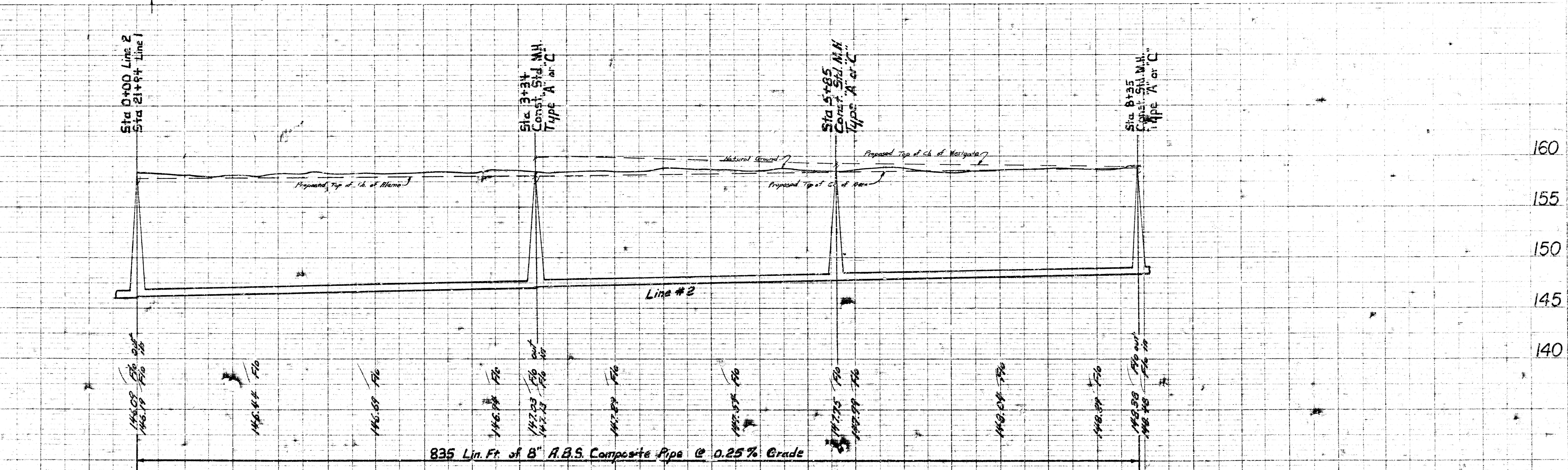

 Plan Scale 1" = 40'
 Profile Scale 1" = 40' Horiz.
 1" = 5' Vert.

Note: For Profile on Line 1F See Sheet 9

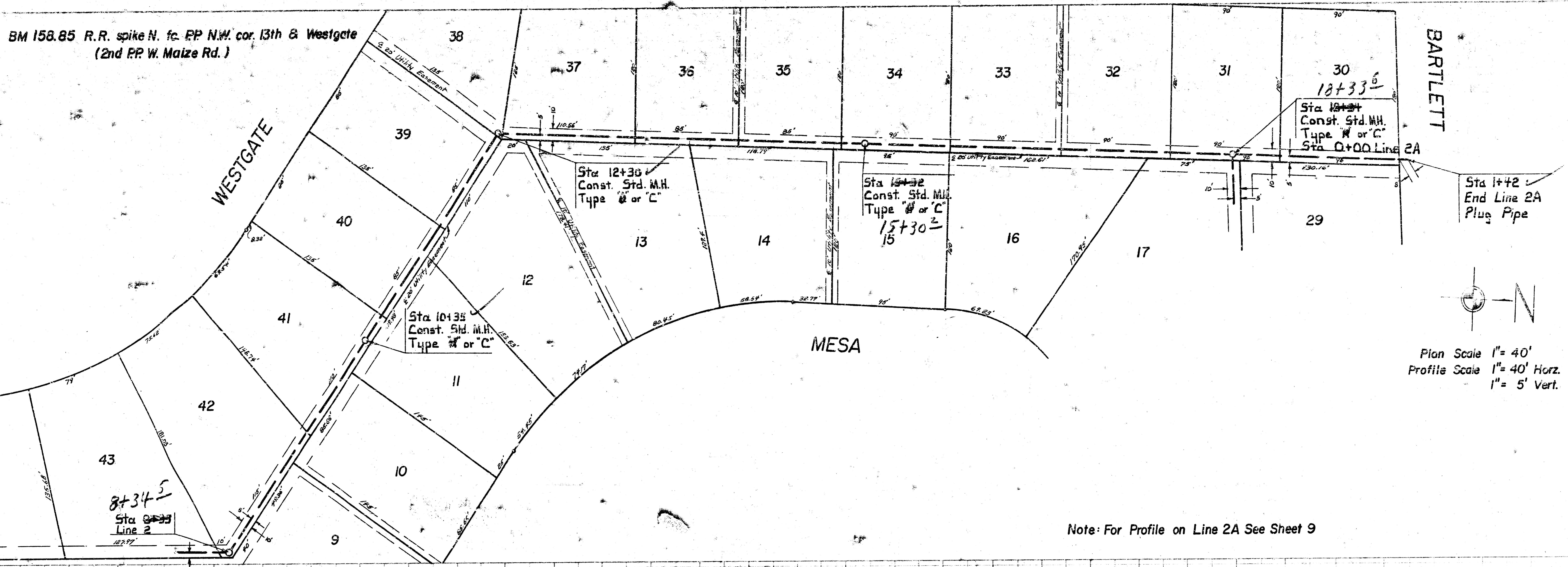




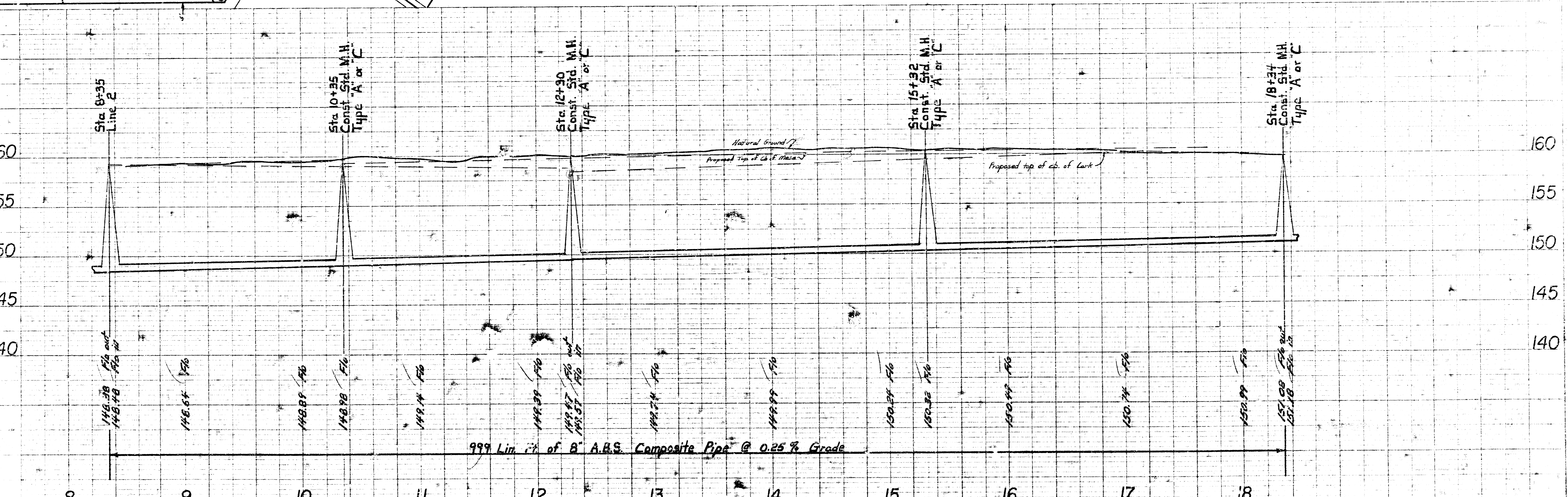
Plan Scale 1" = 40'
 Profile Scale 1" = 40' Horiz.
 1" = 5' Vert.



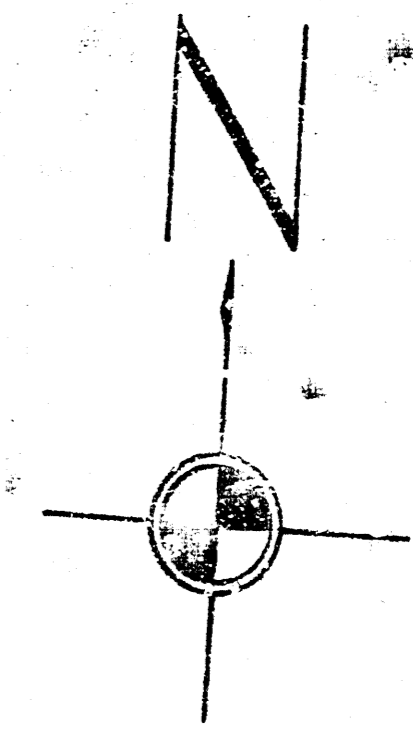
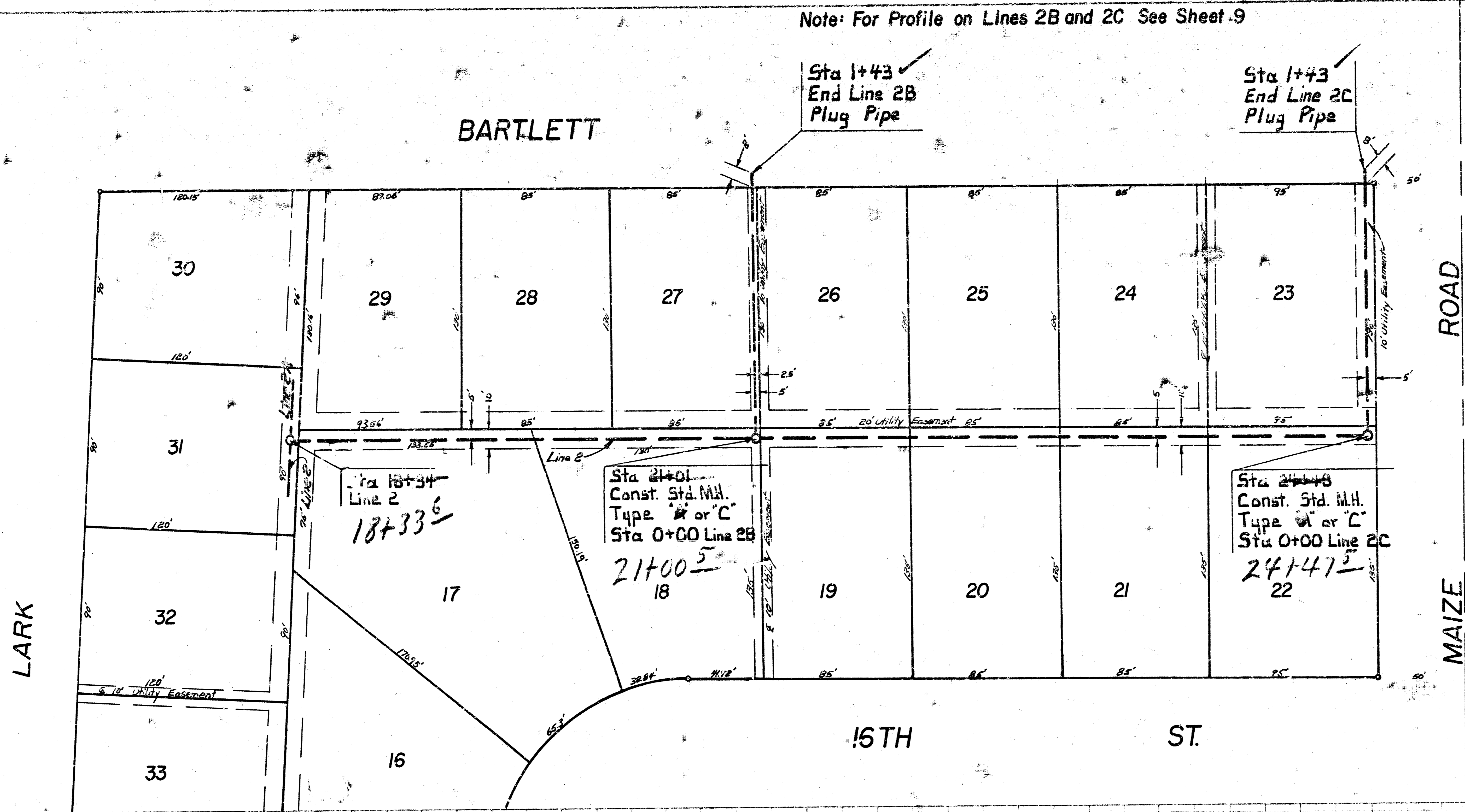
BM 158.85 R.R. spike N. fc. PP N.W. cor. 13th & Westgate
(2nd PP W. Maize Rd.)



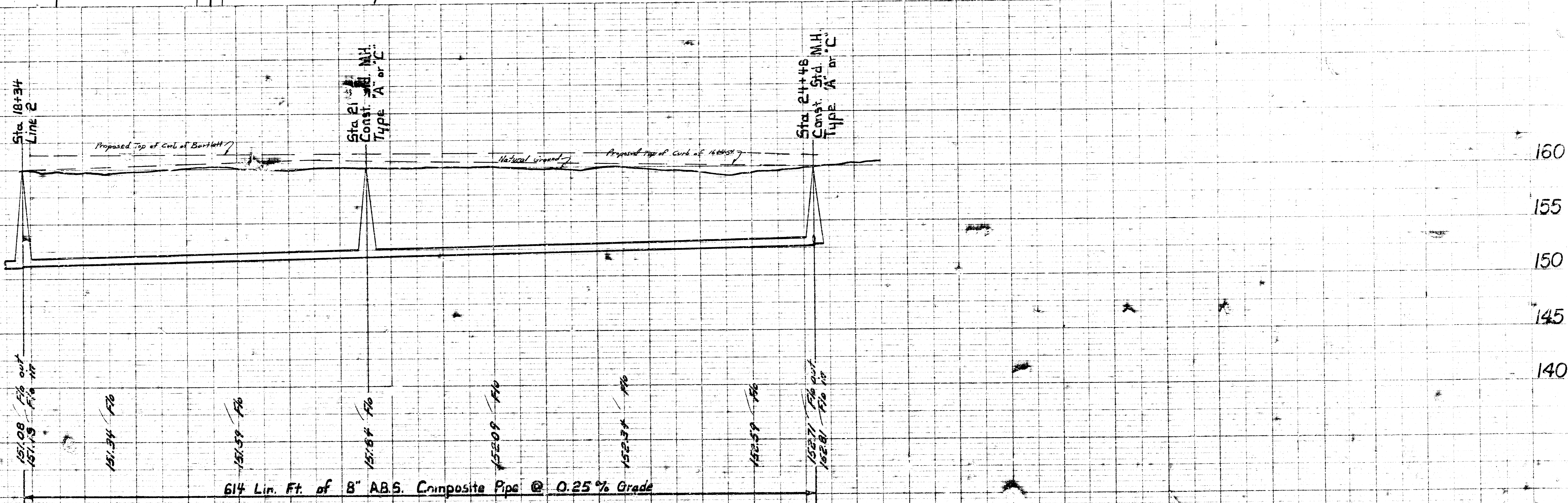
Note: For Profile on Line 2A See Sheet 9



Note: For Profile on Lines 2B and 2C See Sheet 9



Plan Scale 1" = 40'
 Profile Scale 1" = 40' Horz.
 1" = 5' Vert.



BM 158.26 R.R. spike W. fc. PP S.S. arive to Resurrection Cemetery & E.S. Maize Rd.
 BM 157.04 R.R. spike N. fc. PP approx 200' S. & 100' W of N.W. cor. Nantucket & Lark
 (4th PP W. Maize Rd.)

