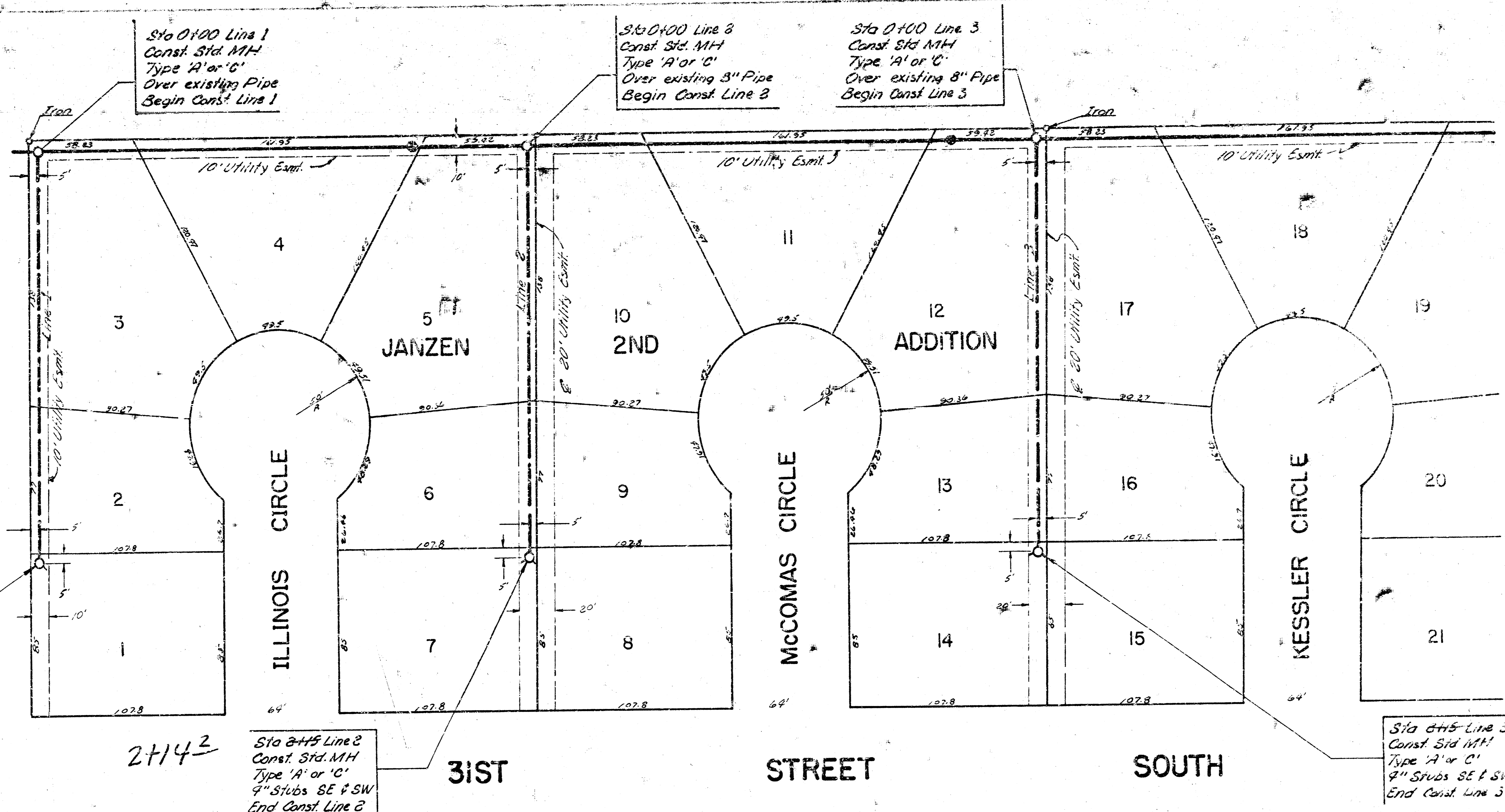


- M.98.51 "□" Chisel mark at North end of curb return on Northeast corner of intersection of 33rd Street South and Leonine Road.
- M.99.85 "□" Chisel mark at West end of curb return on Southwest corner of intersection of 31st Street South and Leonine Road.
- M.100.82 "□" Chisel mark at West end of curb return on Southwest corner of intersection of 31st Street South and Kessler.
- M.101.84 "□" Chisel mark at West end of curb return on Southwest corner of intersection of 31st Street South and Illinois.
- M.102.58 Northeast corner of concrete porch of house at 3903 West 33rd Street South.



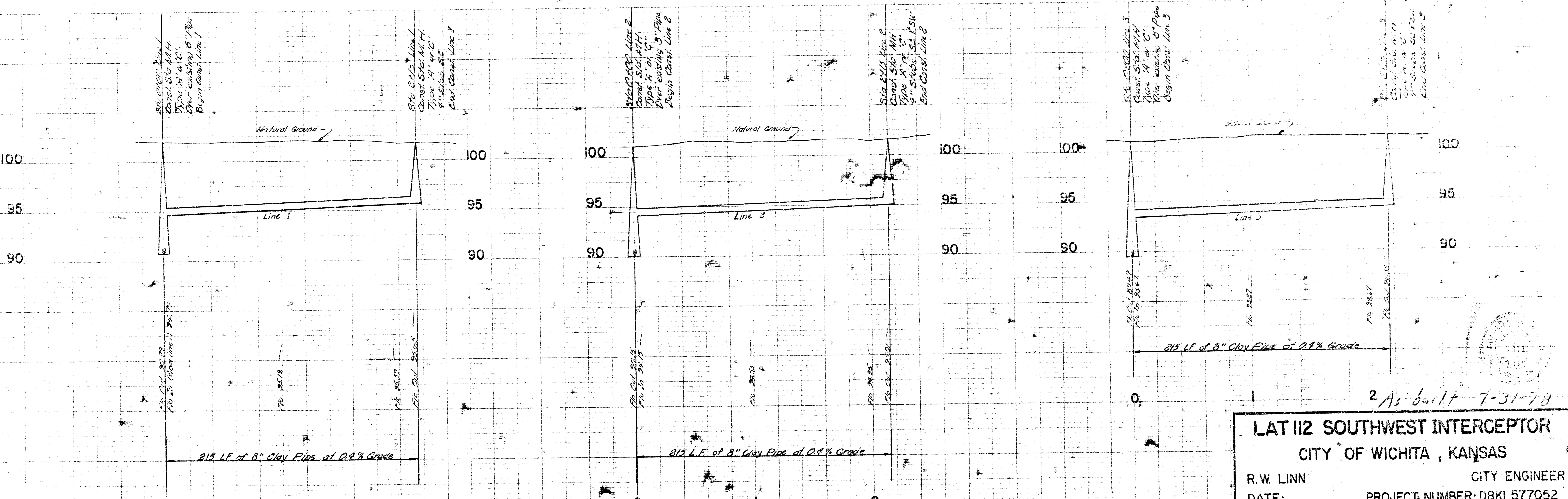
Plan Scale 1" = 40'
 Profile Scale 1" = 40' Horiz.
 1" = 5' Vert.

Note: The following lots are in the benefit district of this project. Lots 1, 2, 3, 7, 8, 9, 13, 14, 15, 16, 20, 21, 22, 23, 27, 28, 29, and 30, all in Jensen Second Addition.

2+14²
 Sta 0+45 Line 1
 Const. Std. MH
 Type 'A' or 'C'
 9" Stubs SE & SW
 End Const. Line 1

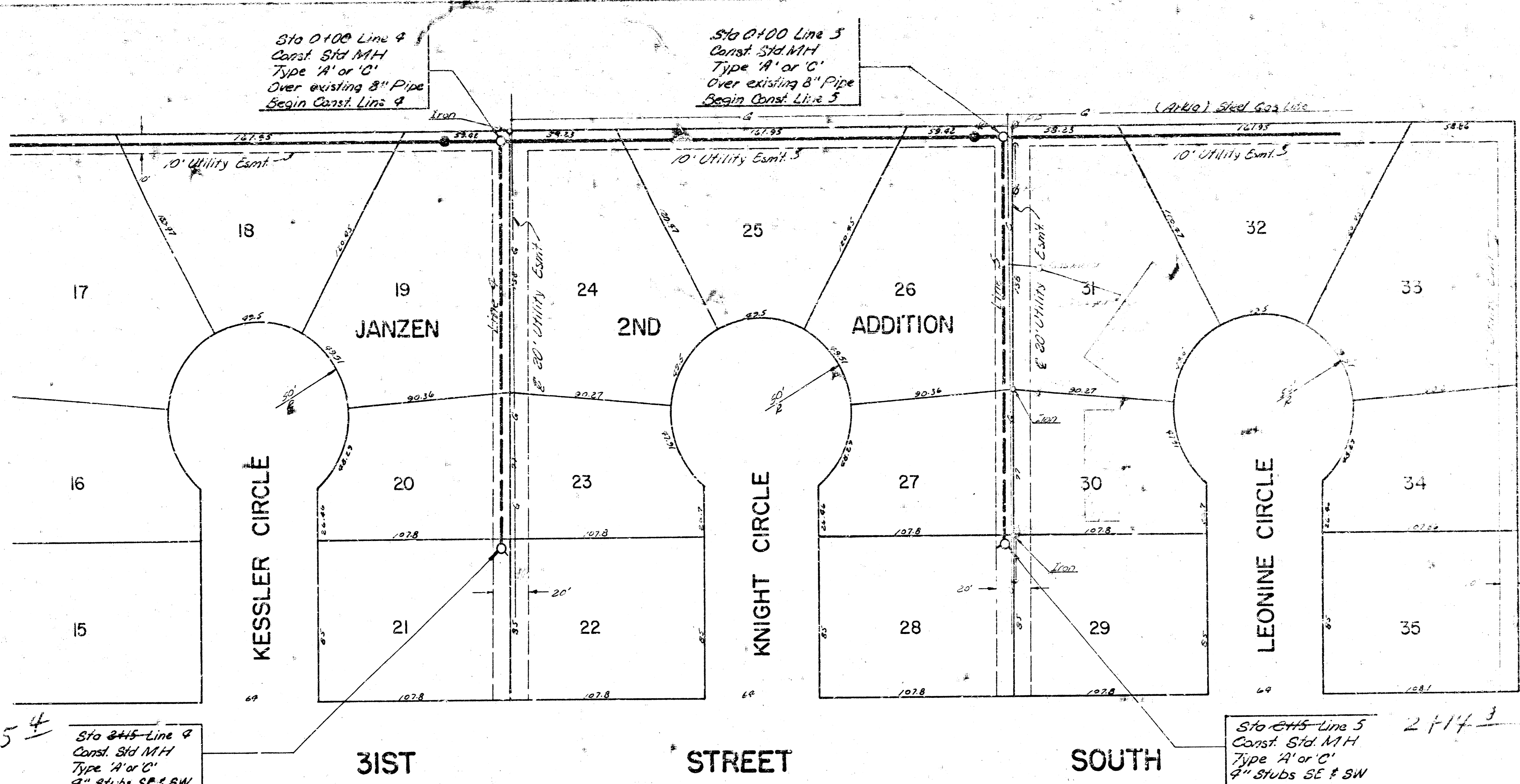
2+14²
 Sta 0+45 Line 2
 Const. Std. MH
 Type 'A' or 'C'
 9" Stubs SE & SW
 End Const. Line 2

2+15²
 Sta 0+45 Line 3
 Const. Std. MH
 Type 'A' or 'C'
 9" Stubs SE & SW
 End Const. Line 3



LAT II2 SOUTHWEST INTERCEPTOR
 CITY OF WICHITA, KANSAS
 R.W. LINN CITY ENGINEER
 DATE: _____ PROJECT NUMBER: DBKL577052

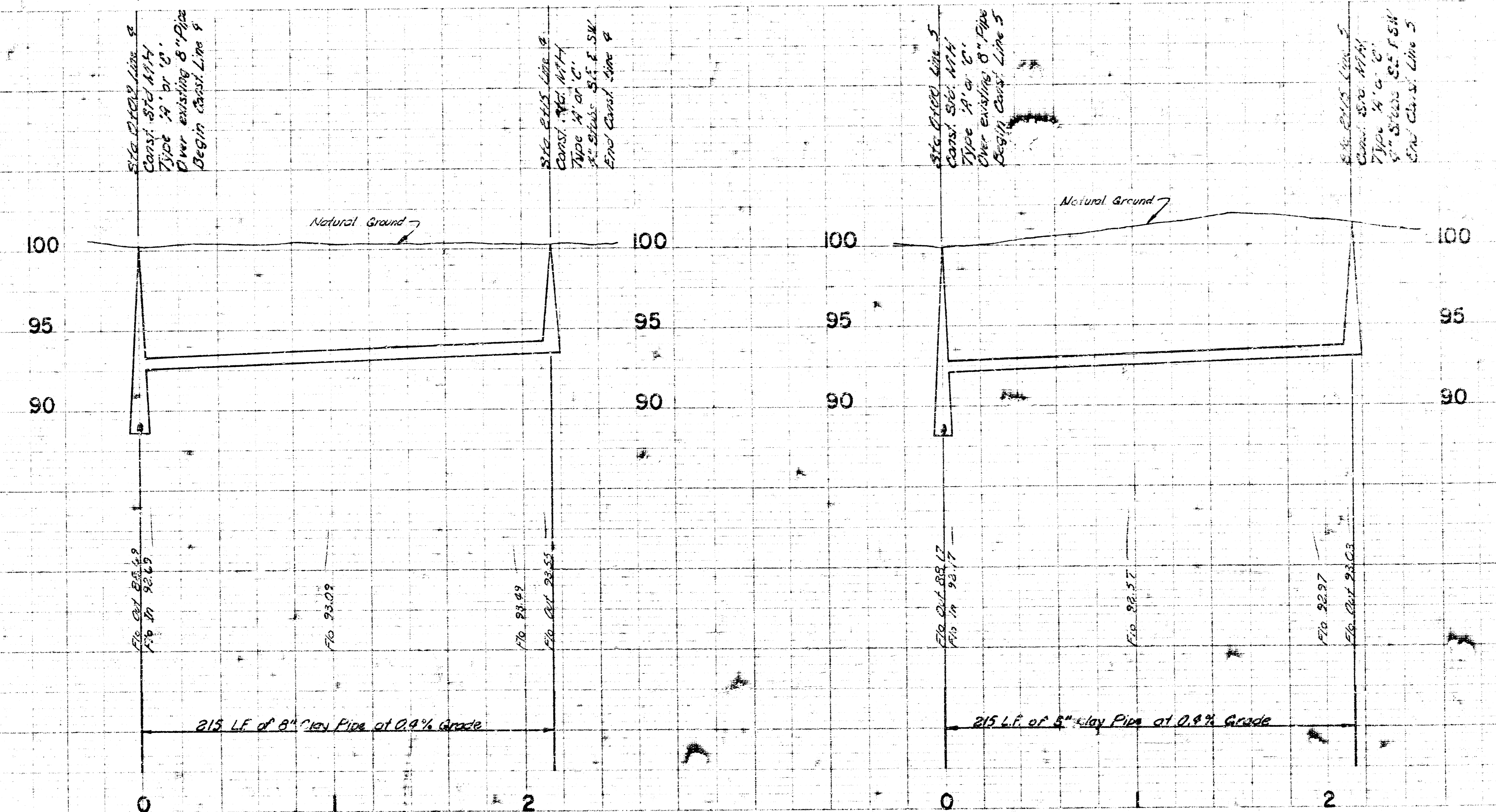
B.M. 101.84 "□" Chis. mark at West end of curb return on Southwest corner of intersection of 31st Street South and Illinois.
 B.M. 102.58 Northeast corner of concrete porch of house at 3903 West 33rd Street South.



Plan Scale 1" = 40'
 Profile Scale 1" = 40'
 1" = 5'

2+15 4
 Sta 0+15 Line 4
 Const. Std. M.H.
 Type 'A' or 'C'
 9" Stubs SE & SW
 End Const. Line 4

2+17 3
 Sta 0+15 Line 5
 Const. Std. M.H.
 Type 'A' or 'C'
 9" Stubs SE & SW



215 LF of 8" Clay Pipe at 0.9% Grade

215 LF of 8" Clay Pipe at 0.9% Grade