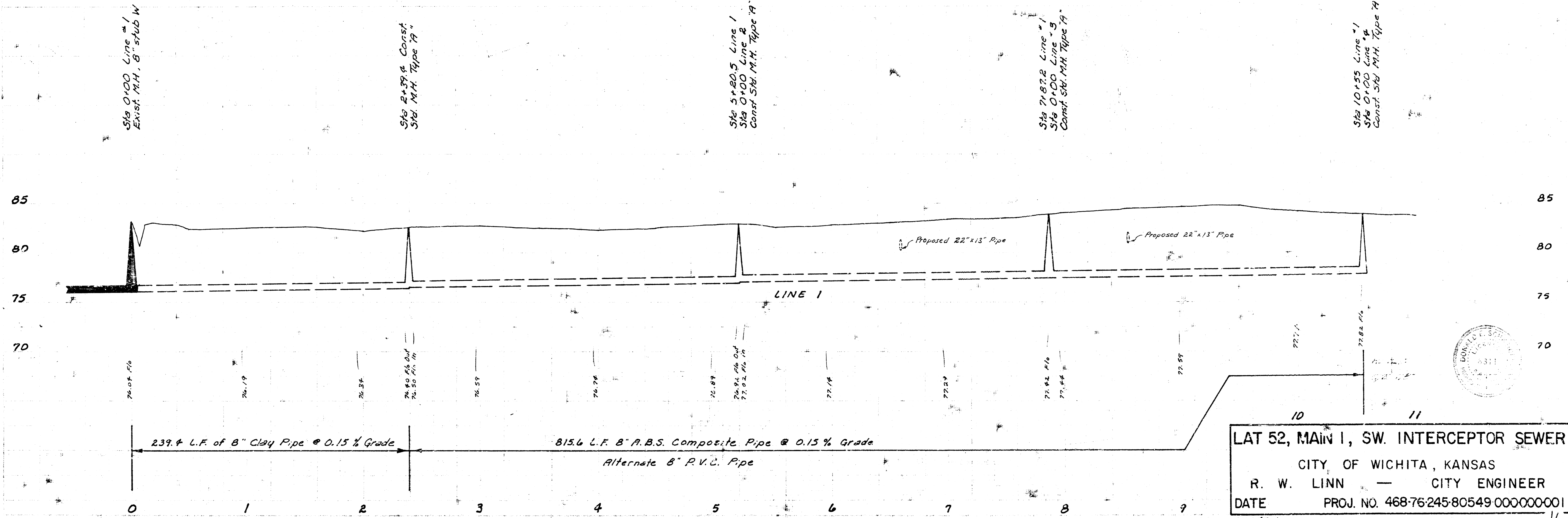


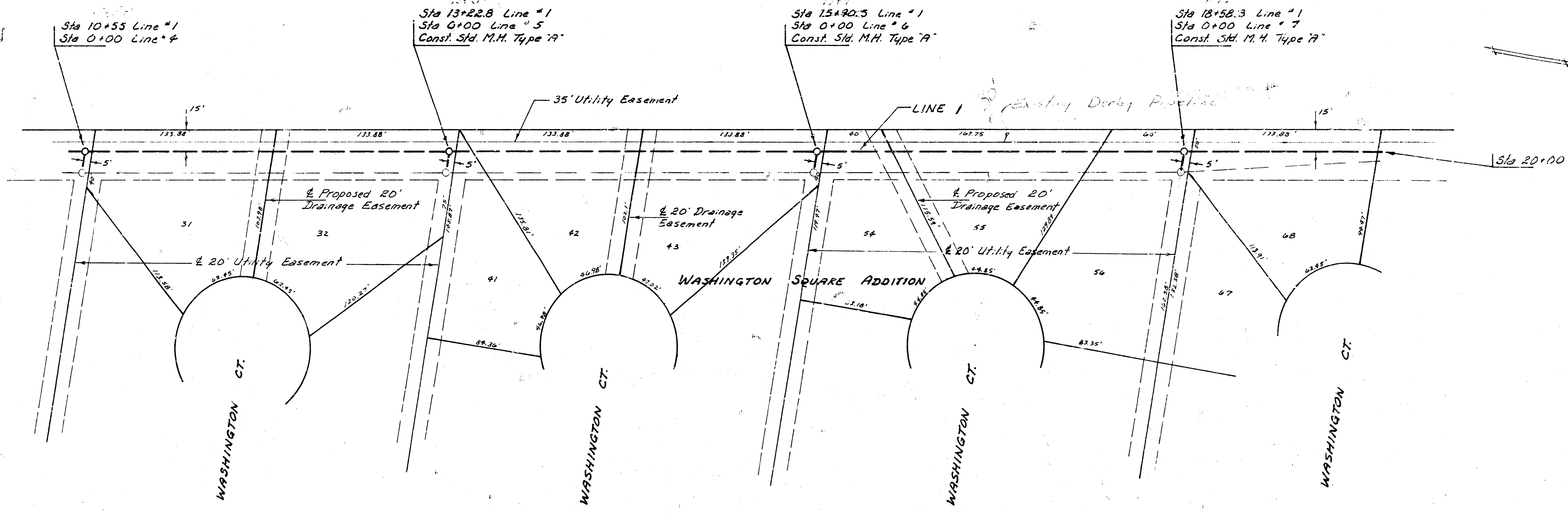
NOTE: CONTRACTOR WILL BE REQUIRED TO MOUND EXCESS EXCAVATED MATERIAL OVER THE SEWER PIPE TO MAINTAIN A MINIMUM COVER OF 30" WHERE REQUIRED.

- B.M. 82.533 City. Sta. 2 ft. S. and 6 ft. E. of NE. corner of Ida & 47th St. Su.
- B.M. 84.08 R.R. Spike W-face P.P. 3 ft. N. of 1/4 Washington Ct. (lots 27-36) E. side Washington.
- B.M. 85.56 R.R. Spike S-face Light Pole NE. Corner 44th St. So. and Washington.
- B.M. 84.25 NW Corner Conc. Porch House #65th S. Washington.
- B.M. 83.74 R.R. Spike W-face Street Light Pole NE. Corner 45th St. So. and Washington.

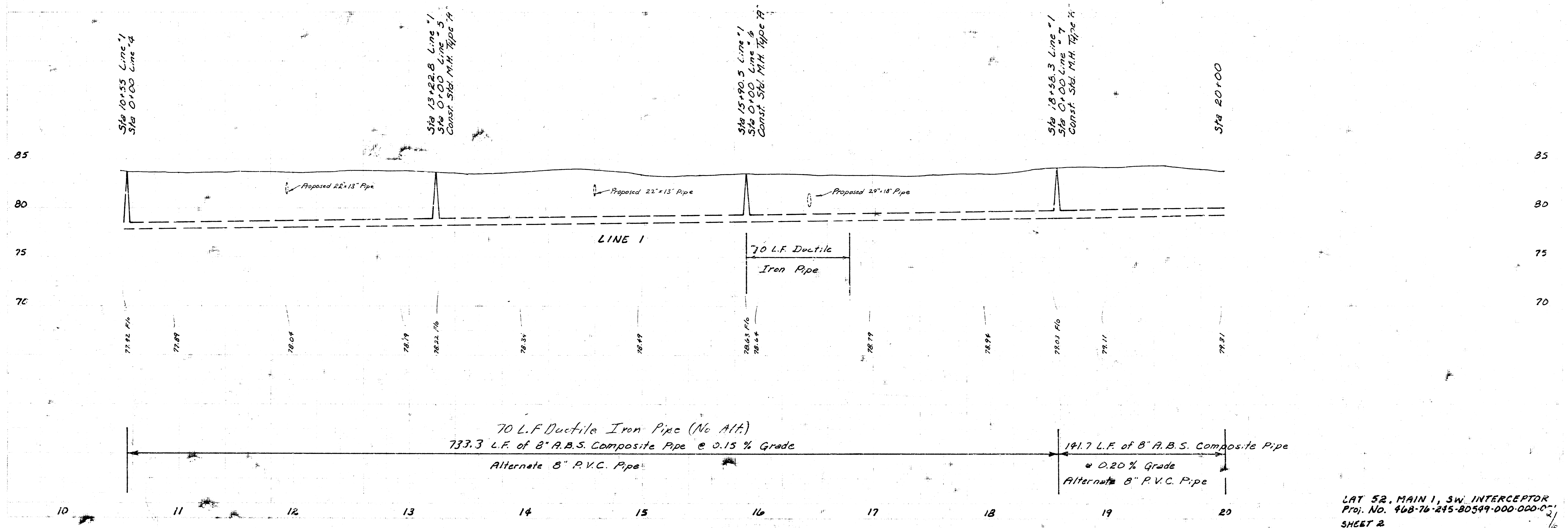


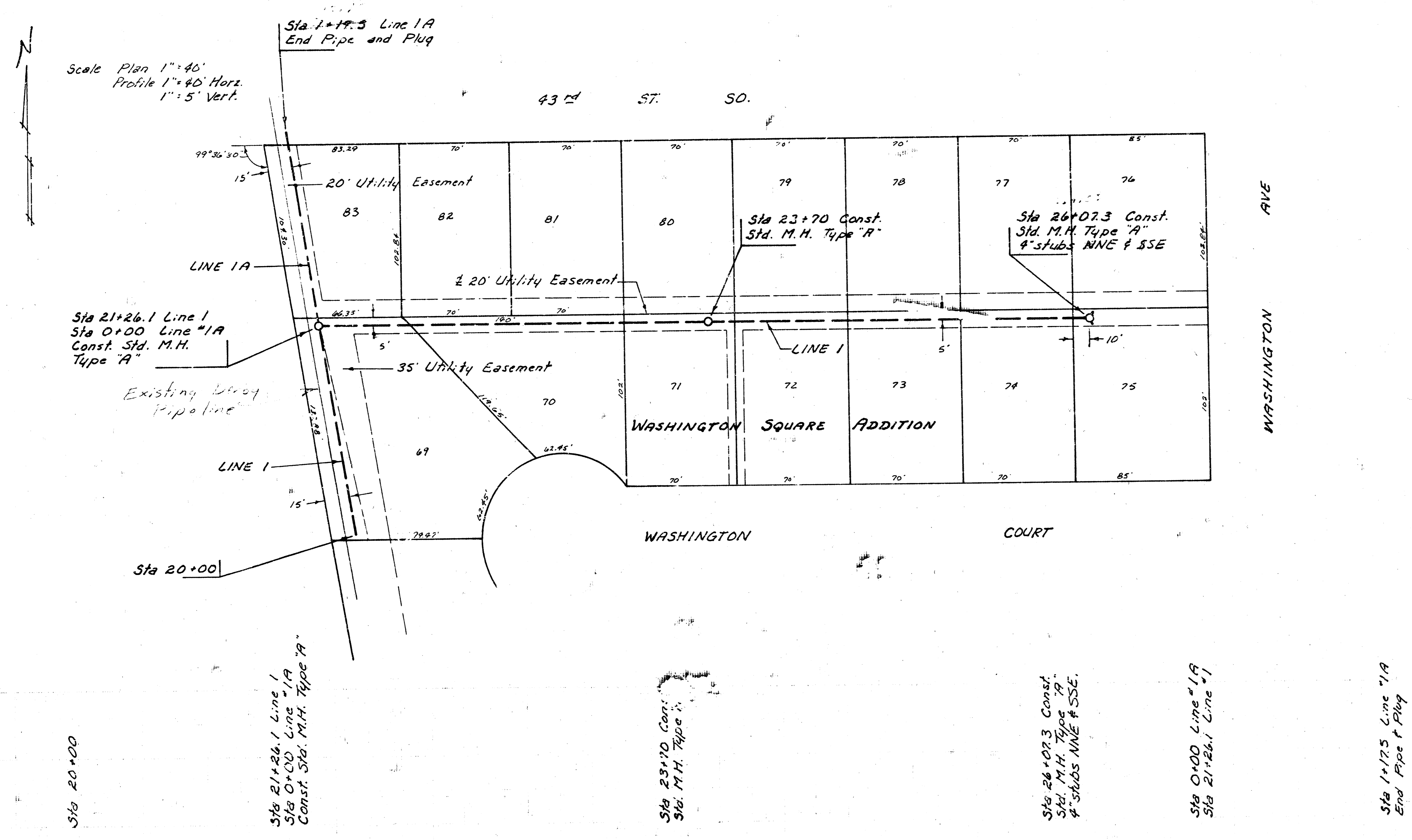
LAT 52, MAIN 1, SW. INTERCEPTOR SEWER
CITY OF WICHITA, KANSAS
R. W. LINN — CITY ENGINEER
DATE PROJ. NO. 468-76-245-80549 00000001
SHEET 1

Scale Plan 1"=40'
 Profile 1"=40' Horiz.
 1"=5' Vert.



NOTE: JOINTS BETWEEN DUCTILE IRON PIPE AND OTHER TYPES OF PIPE SHALL BE ENCASED WITH REINF. CONCRETE ENCASEMENT A MINIMUM DISTANCE OF 5' EACH SIDE OF THE JOINT.





Scale Plan 1"=40'
Profile 1"=40' Horiz.
1"=5' Vert.

Sta 21+26.1 Line 1
Sta 0+00 Line 1A
Const. Std. M.H.
Type "A"

Sta 20+00

Sta 21+26.1 Line 1
Sta 0+00 Line 1A
Const. Std. M.H. Type "A"

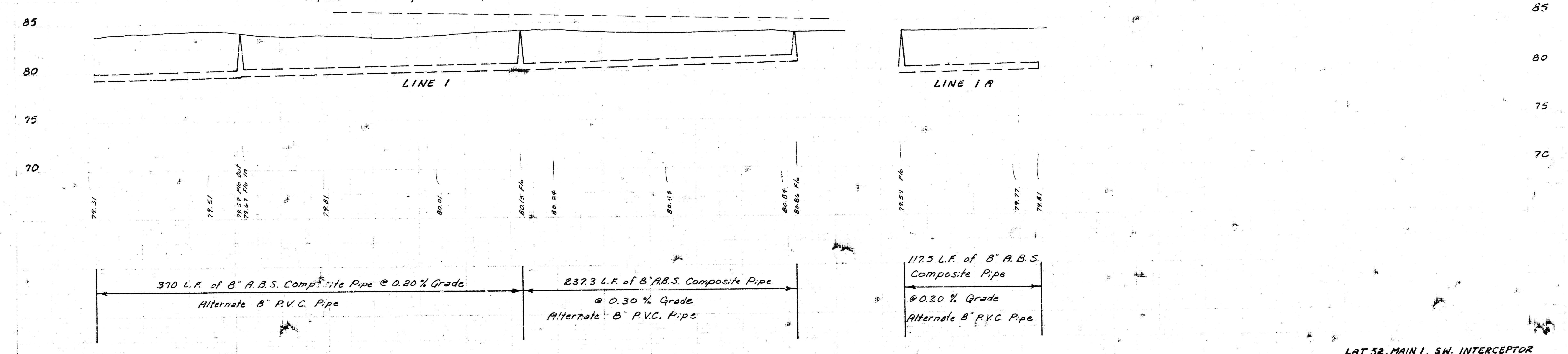
Sta 23+70 Const.
Std. M.H. Type "A"

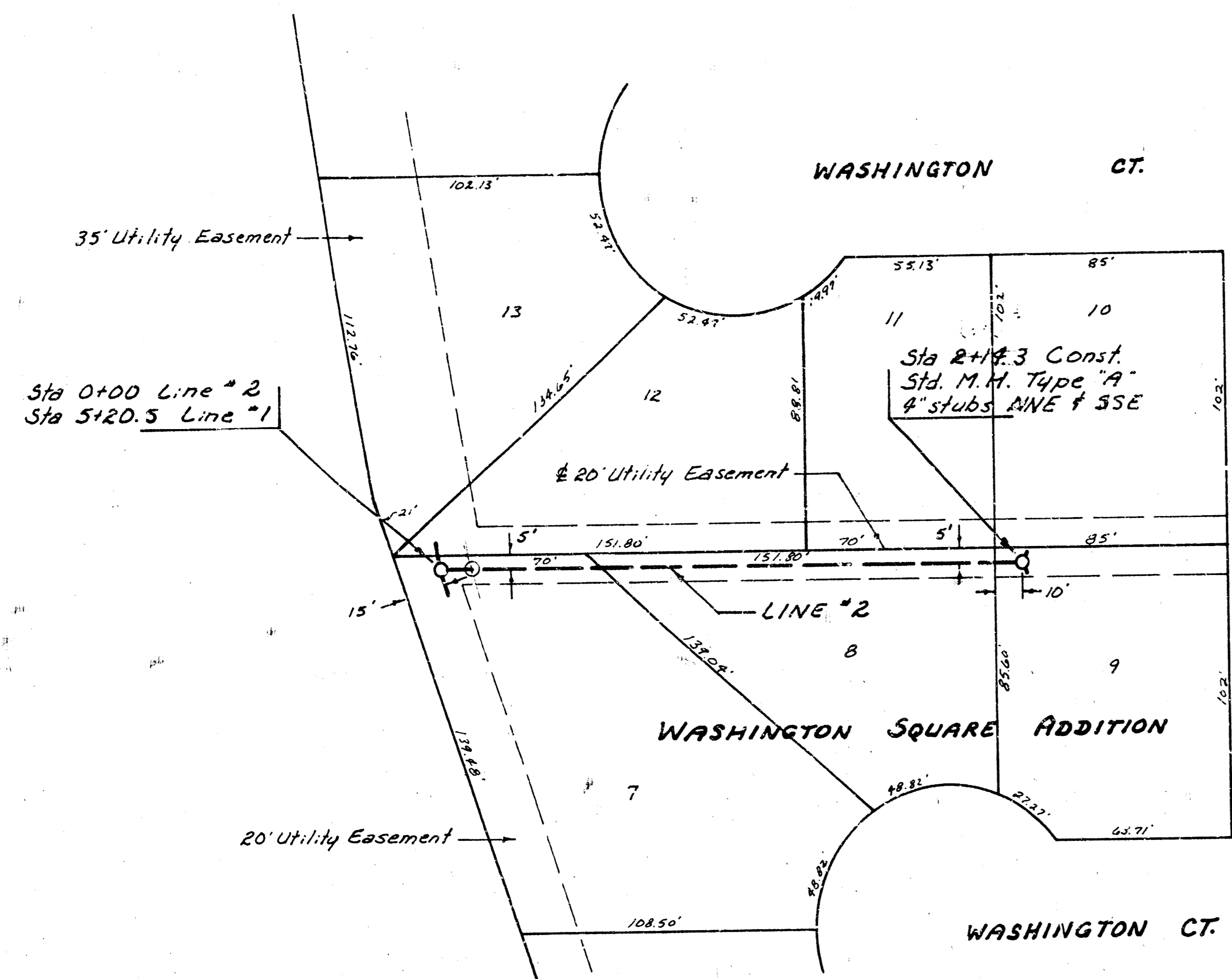
Sta 26+07.3 Const.
Std. M.H. Type "A"
4' stubs NNE & SSE

Sta 0+00 Line 1A
Sta 21+26.1 Line 1

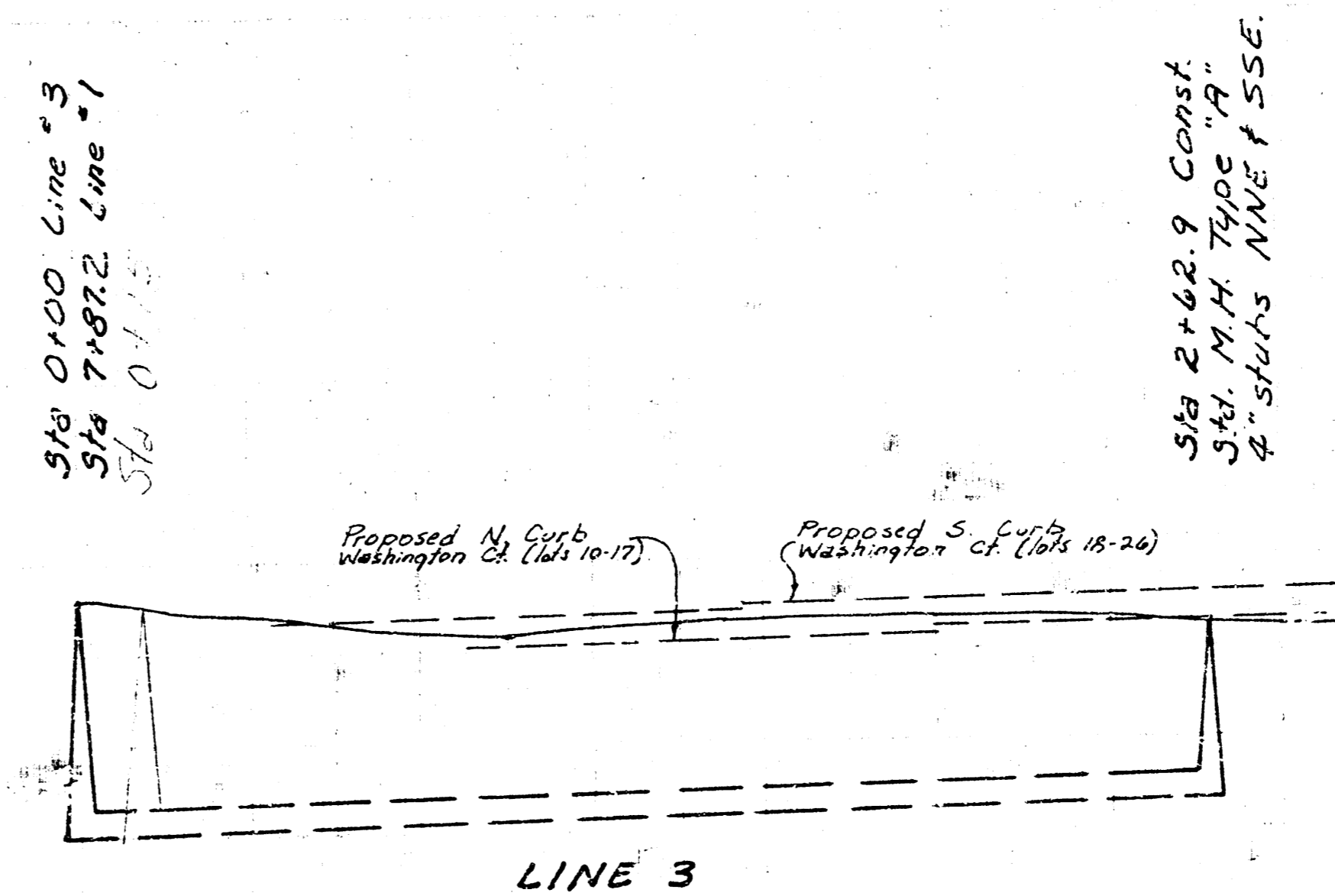
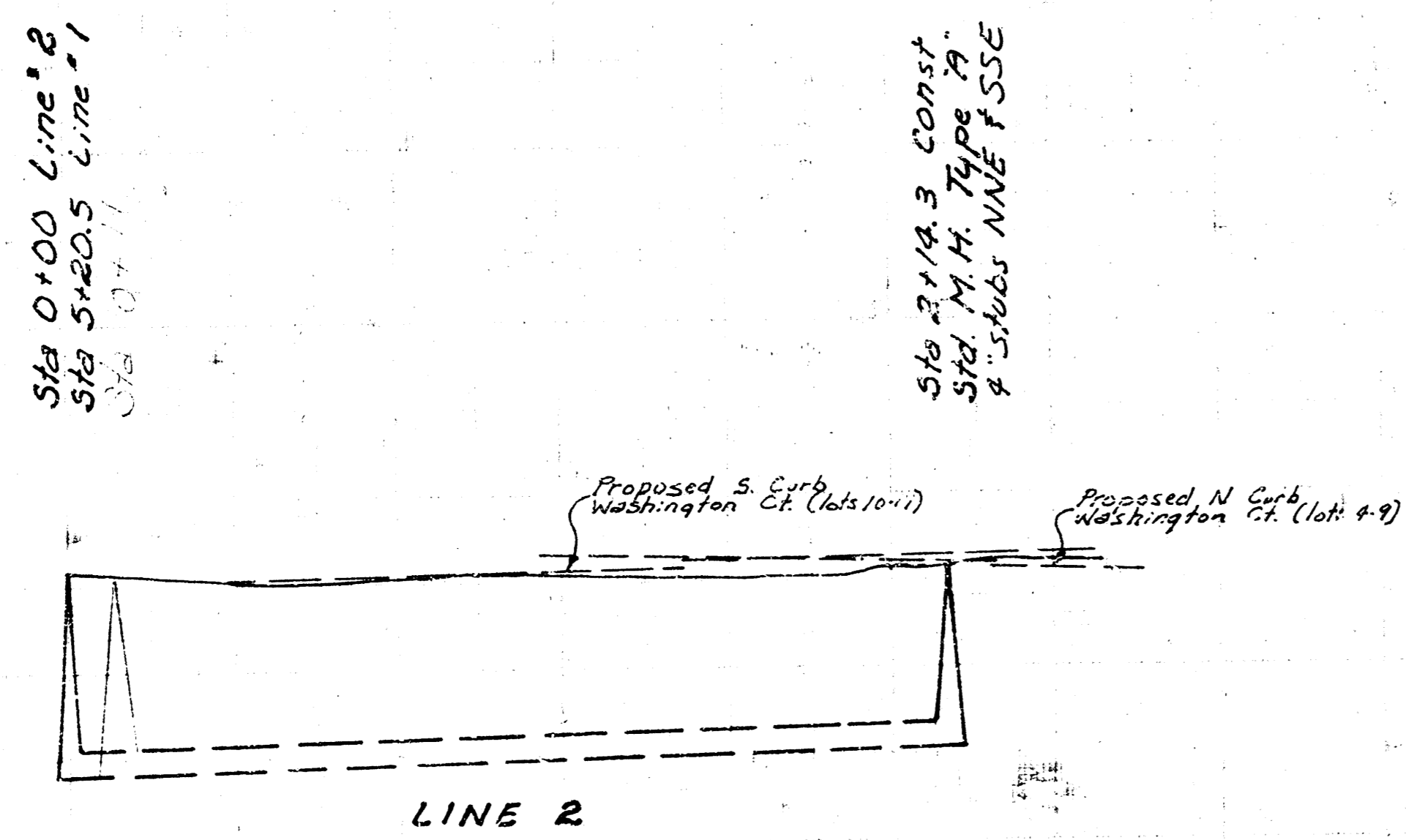
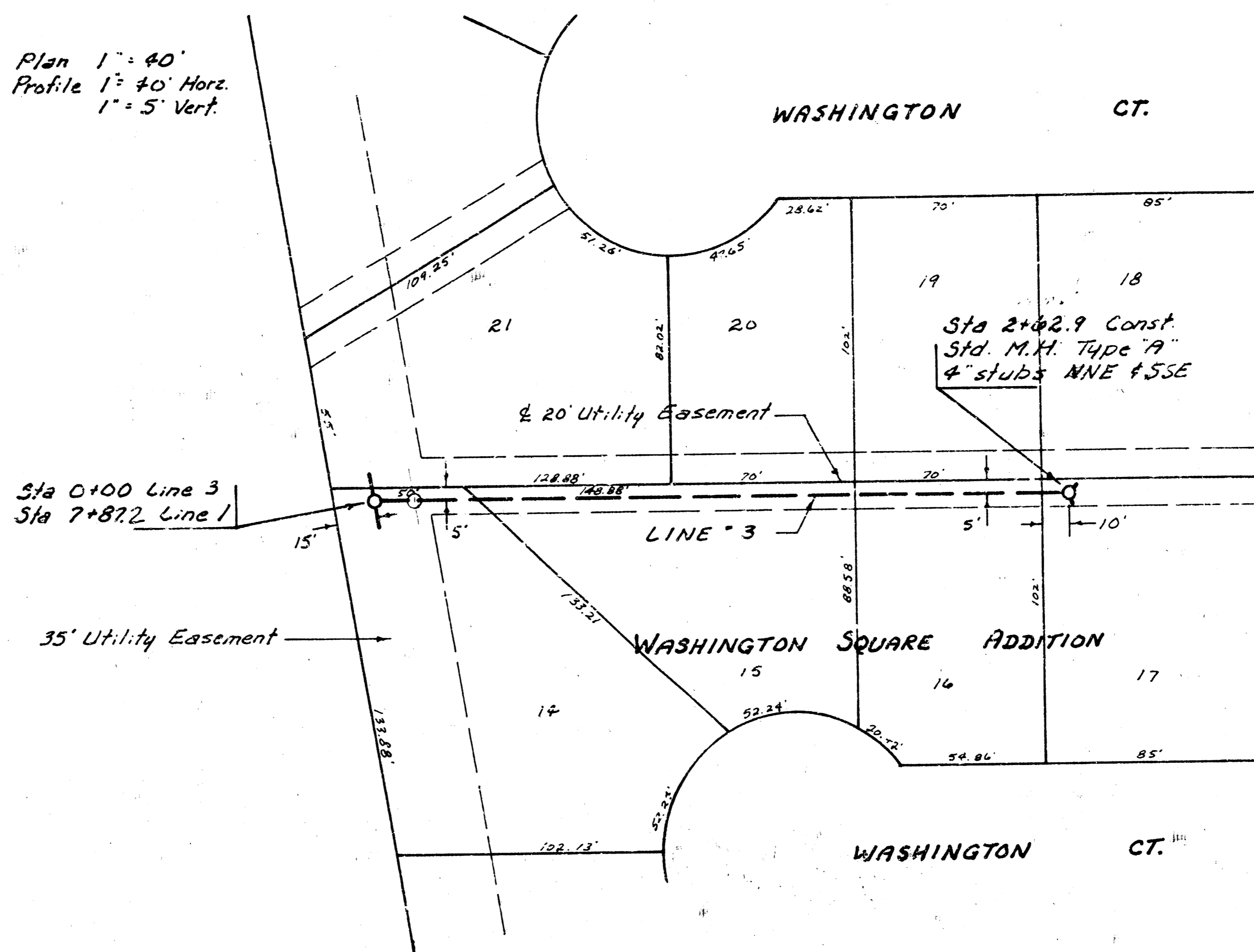
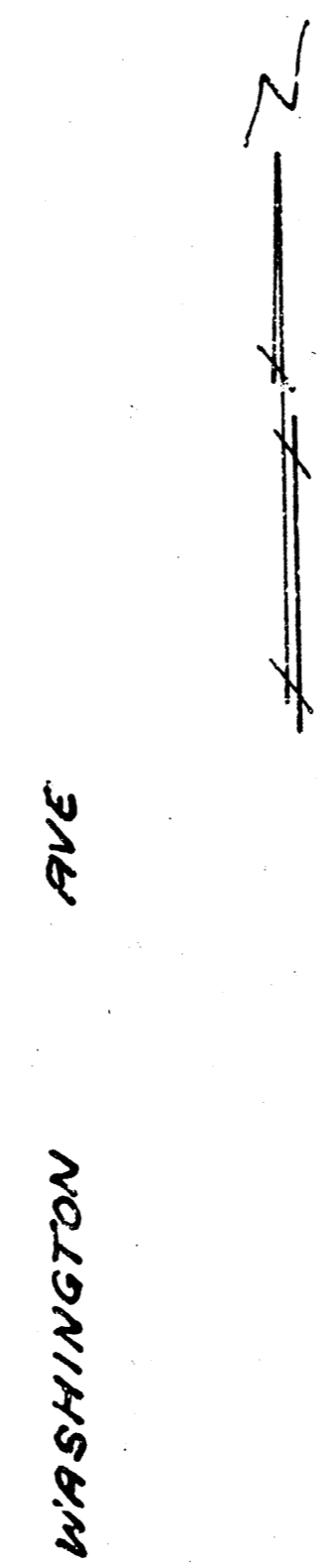
Sta 1+75 Line 1A
End Pipe & Plug

Proposed N. Curb Washington Ct. (NA 62-75)





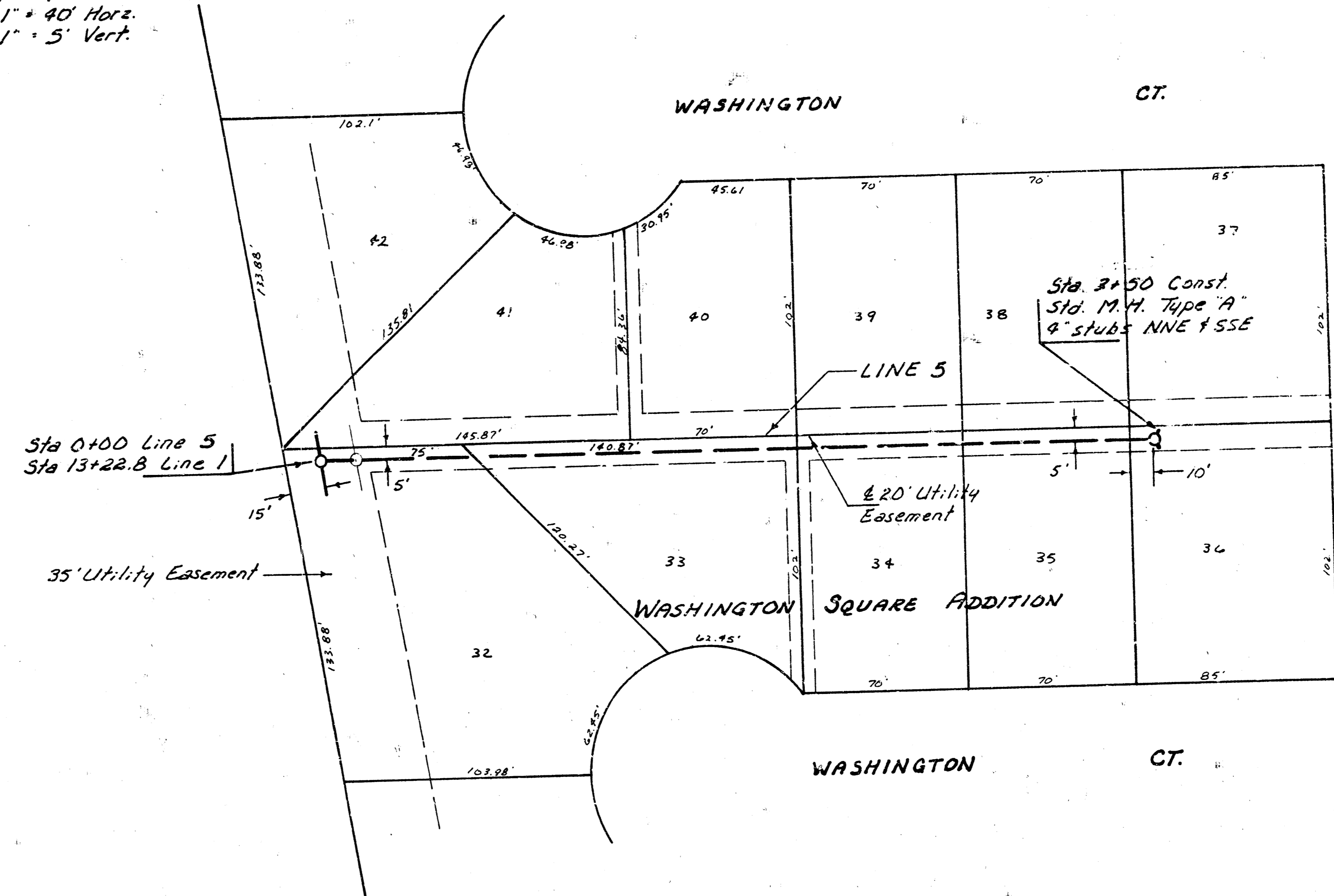
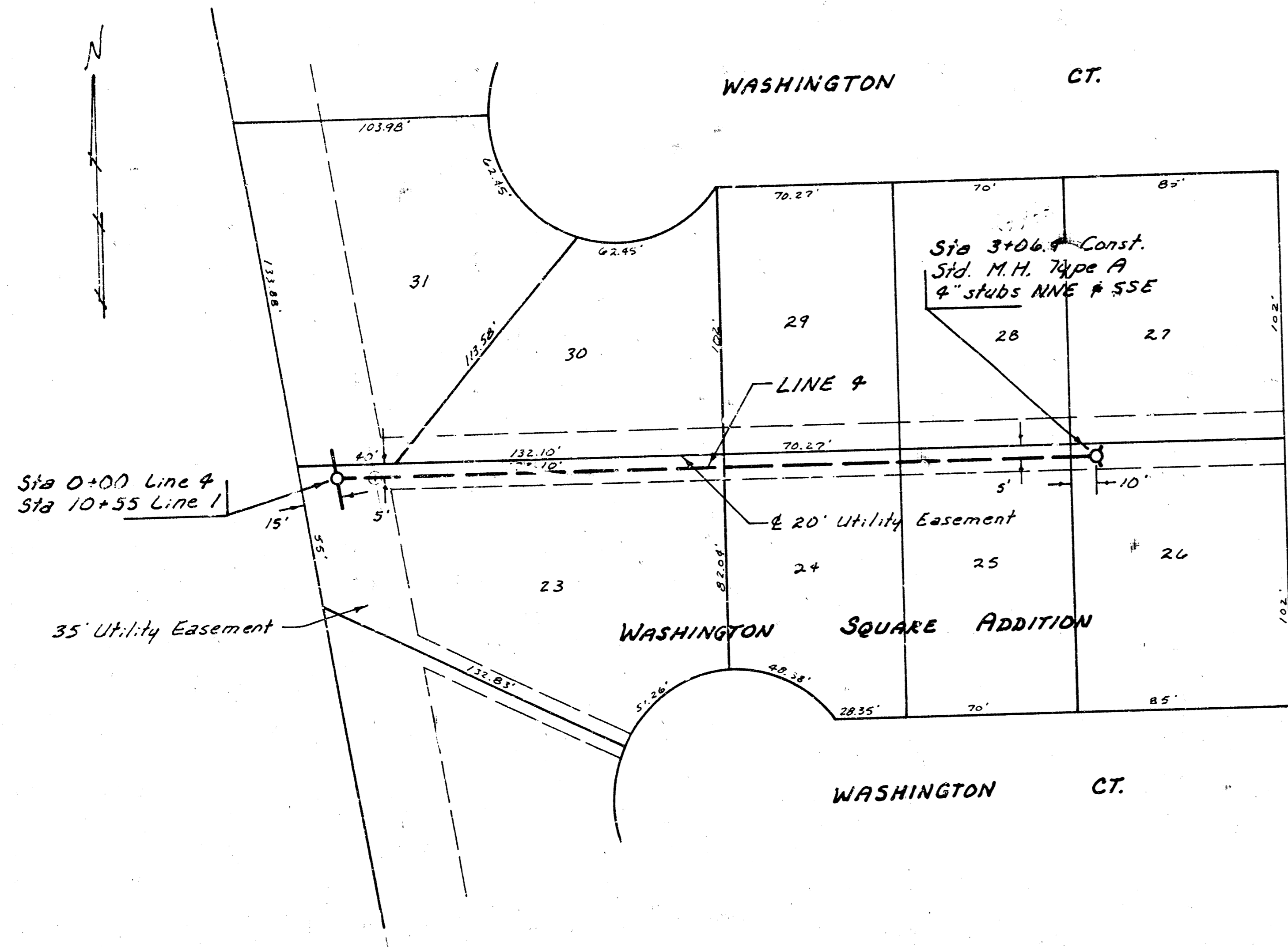
Scale Plan 1" = 40'
 Profile 1" = 40' Horiz.
 1" = 5' Vert.



214.3 L.F. of 8" A.B.S. Composite Pipe
 @ 0.30 % Grade
 Alternate 8" P.V.C. Pipe

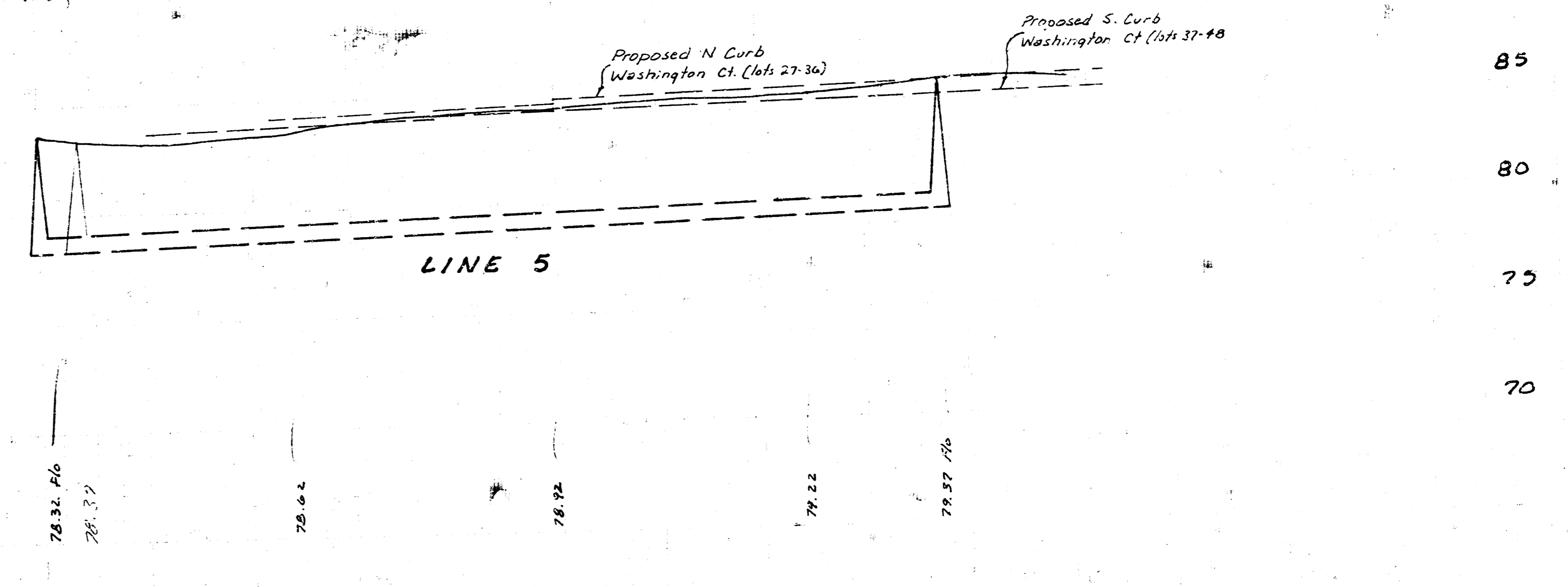
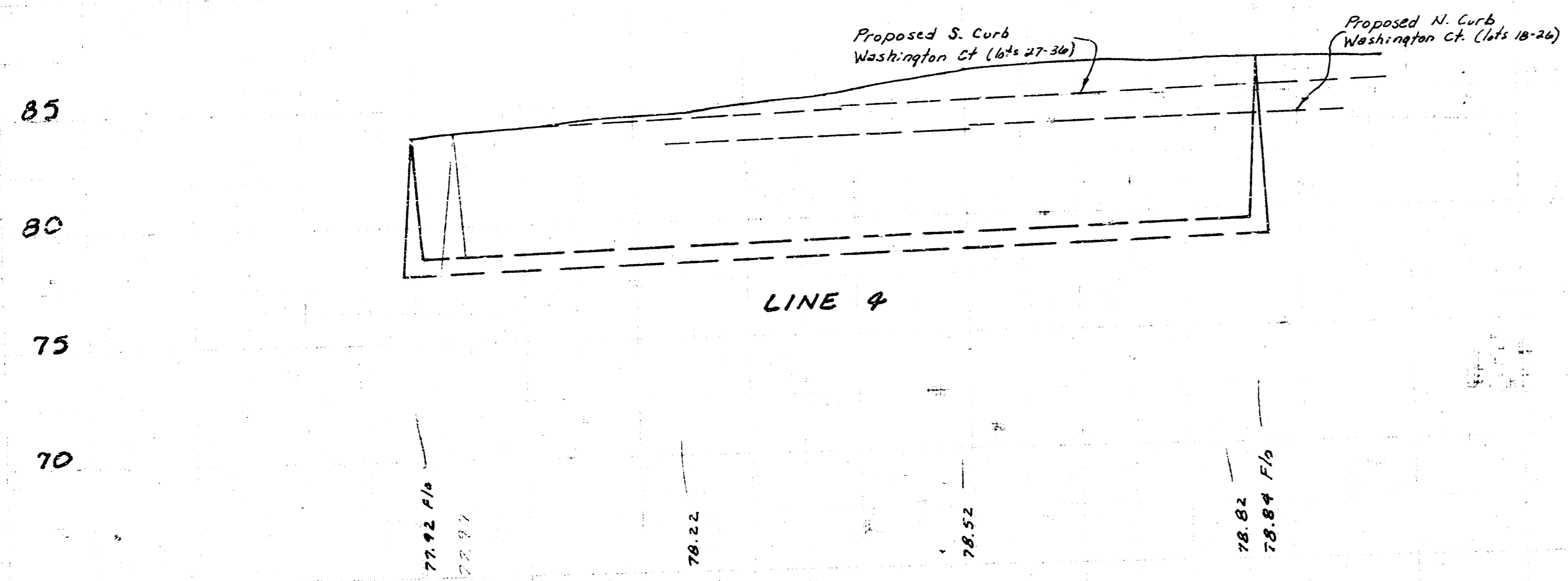
262.9 L.F. of 8" A.B.S. Composite Pipe
 @ 0.30 % Grade
 Alternate 8" V.C.P. Pipe

Scale Plan 1" = 40'
 Profile 1" = 40' Horz.
 1" = 5' Vert.



Sta 0+00 Line 4
 Sta 10+55 Line 1
 Sta 3+06.4 Const.
 Std. M.H. Type A
 4' stubs NNE & SSE

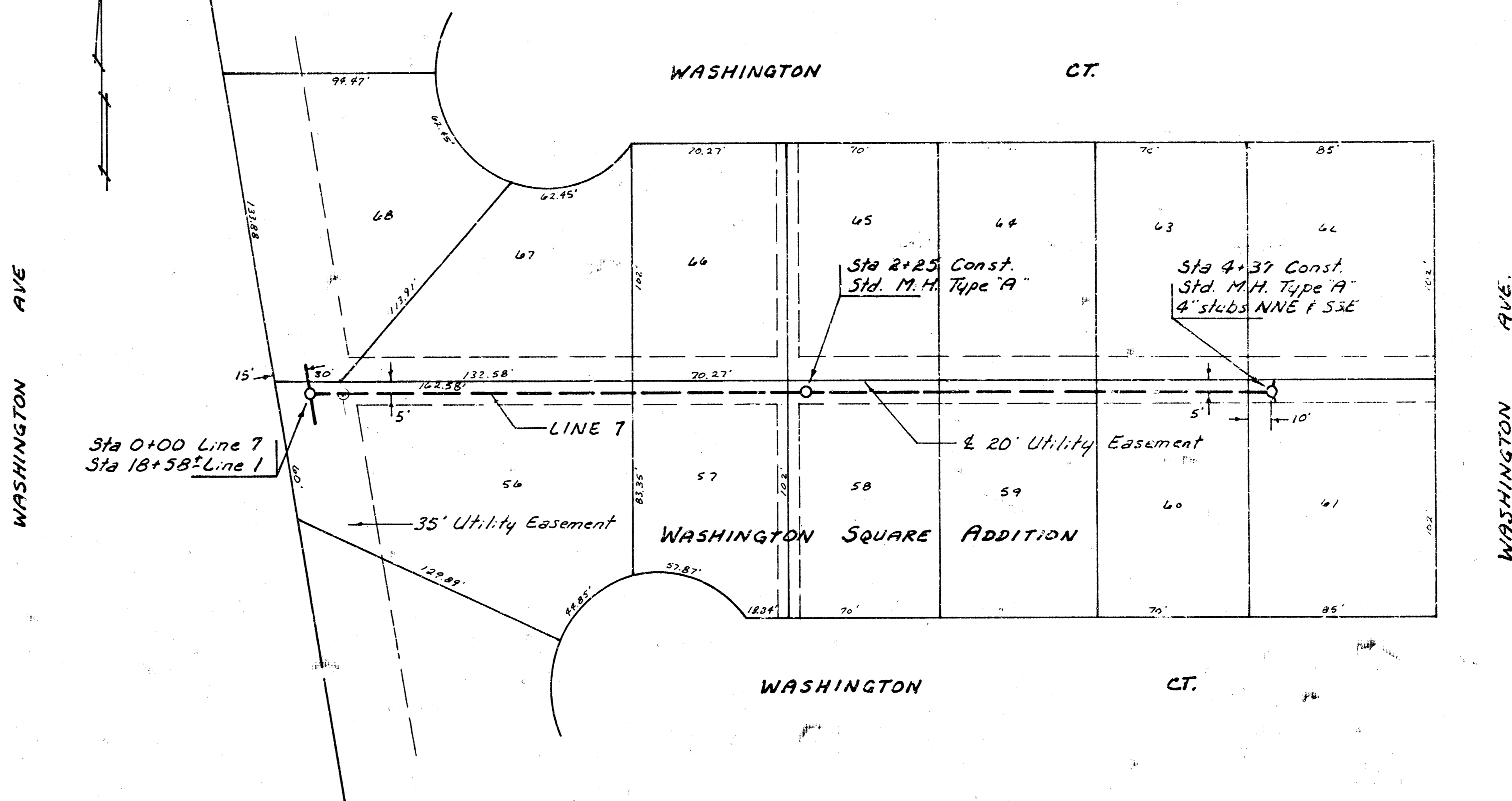
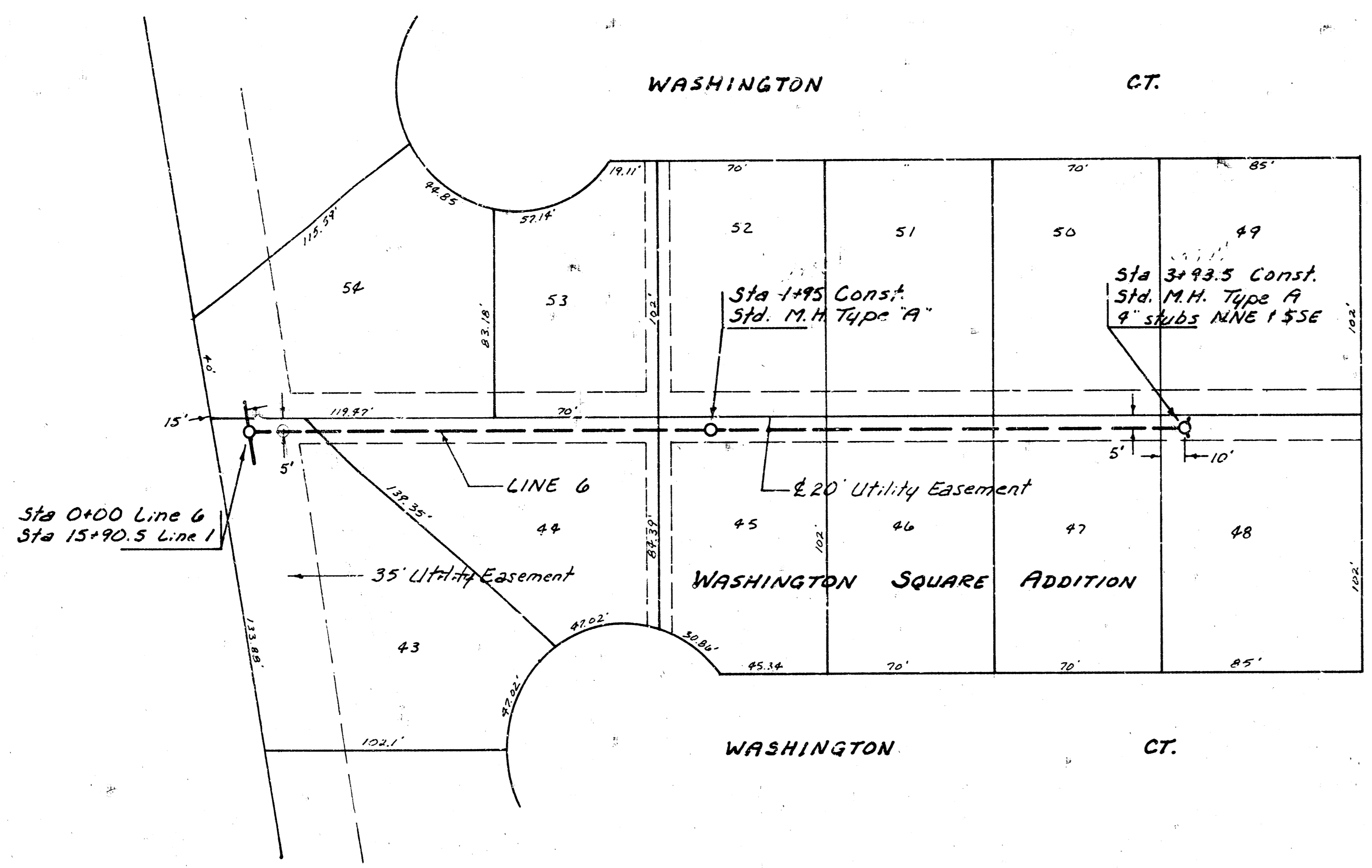
Sta 0+00 Line 5
 Sta 13+22.8 Line 1
 Sta 7+50 Const.
 Std. M.H. Type A
 4' stubs NNE & SSE



306 L.F. of 8" A.B.S. Composite Pipe
 @ 0.30% Grade
 Alternate 8" P.V.C. Pipe

350 L.F. of 8" A.B.S. Composite Pipe @ 0.30% Grade
 Alternate 8" P.V.C. Pipes

Scale Plan 1" = 40'
 Profile 1" = 40' Horz.
 1" = 5' Vert.



Sta 0+00 Line 6
 Sta 15+90.5 Line 6

Sta 1+93.5 Const.
 Std. M.H. Type "A"

Sta 3+93.5 Const.
 Std. M.H. Type "A"
 4 stubs NINE 1.5SE

Sta 0+00 Line 7
 Sta 18+58 Line 7

Sta 2+25 Const.
 Std. M.H. Type "A"

Sta 4+37 Const.
 Std. M.H. Type "A"
 4 stubs NINE 1.5SE

