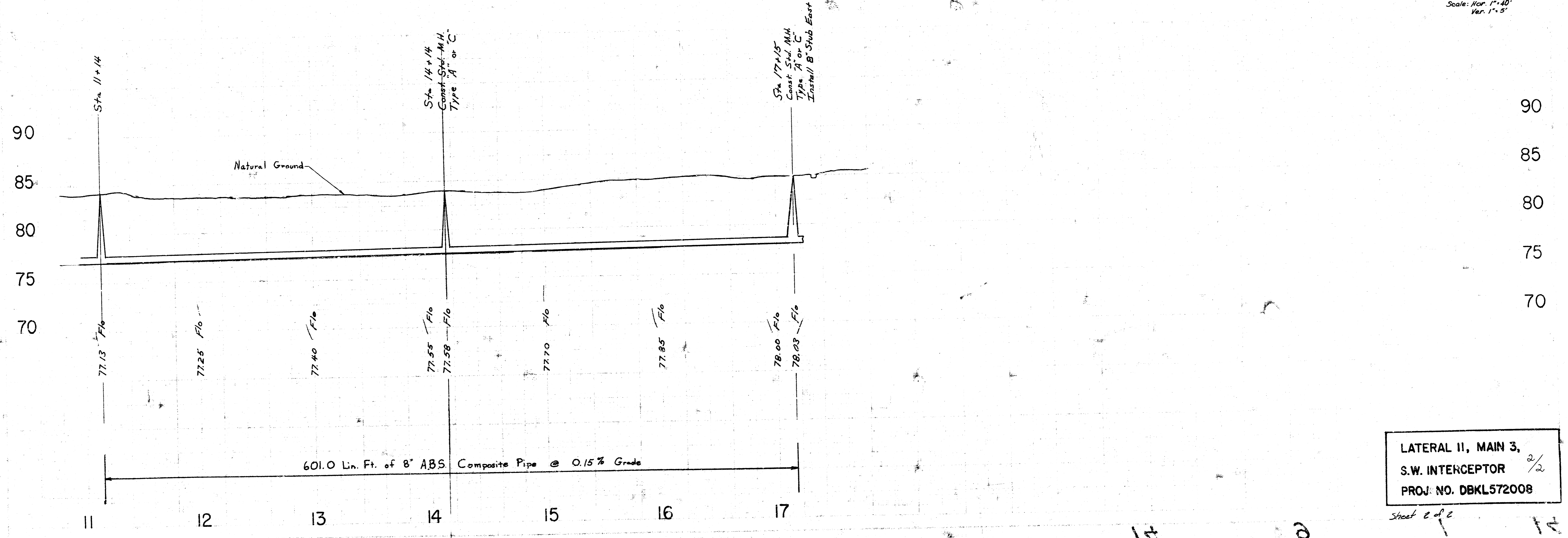
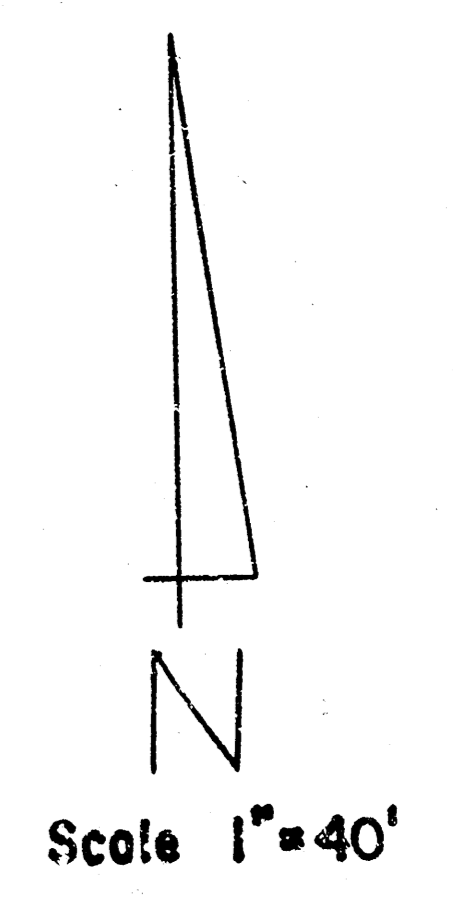
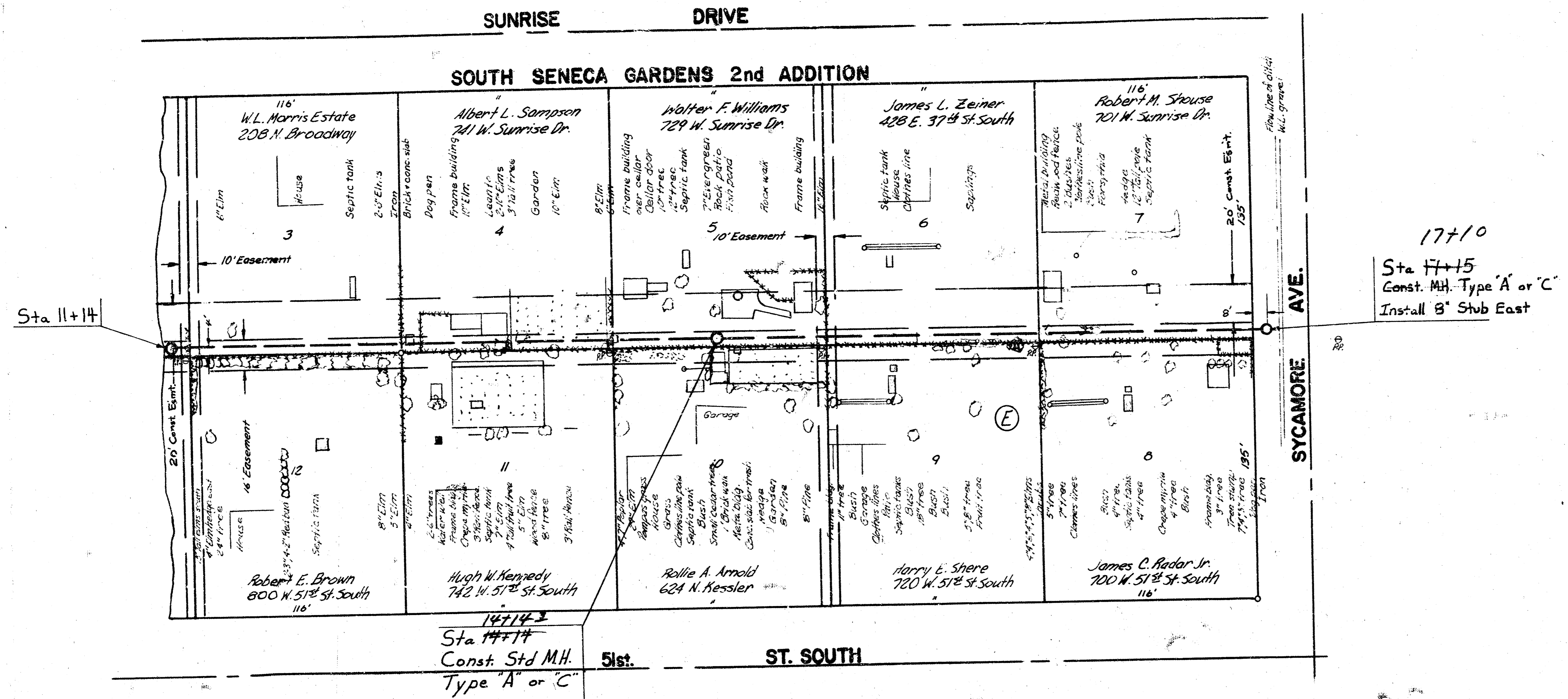


B.M. 85.52 1/4" spike N.W. face of power pole, East side of Sycamore, 195' N. of 51st St. South.

SURVEY BY
 Eng. L. L. Lasky
 5/20/09



LATERAL 11, MAIN 3,
 S.W. INTERCEPTOR ²/₂
 PROJ. NO. DBKL572008

Sheet 2 of 2

Scale: Hor. 1"=40'
Ver. 1"=5'