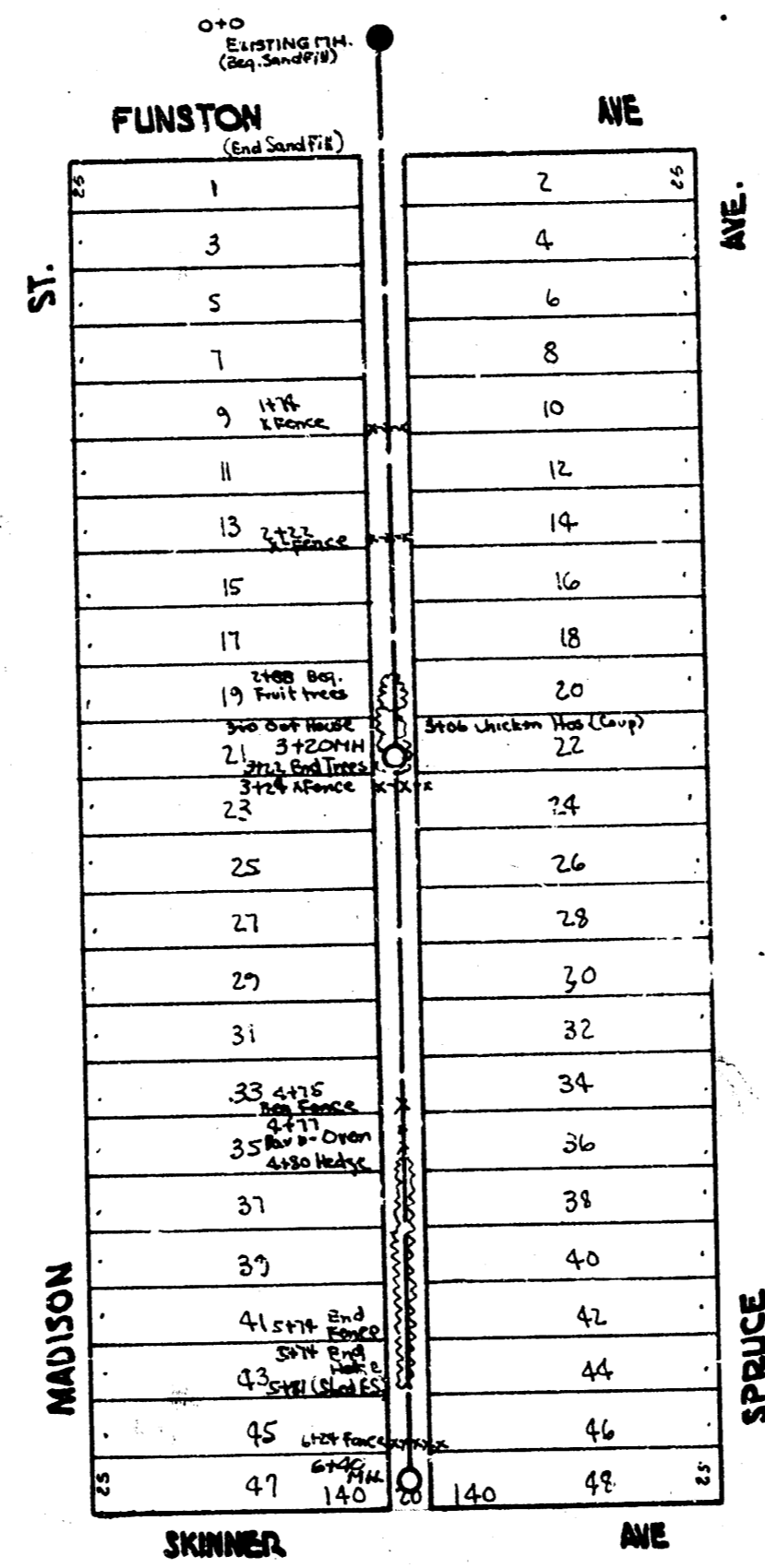


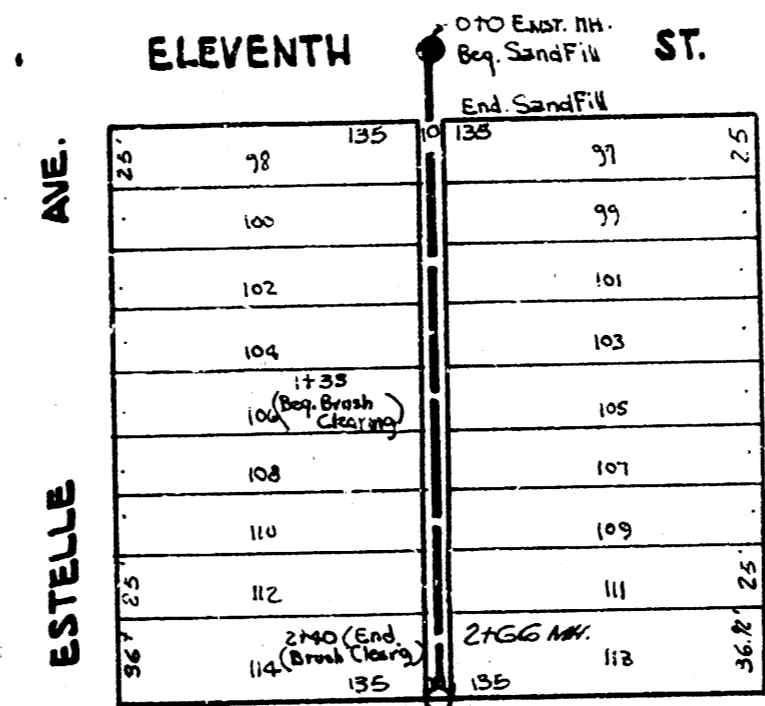
LAT. 14, DIST. R, SS# 20

Bk. 76.54 E. Side Plate So. Side Scott (Siphon Box of 12)



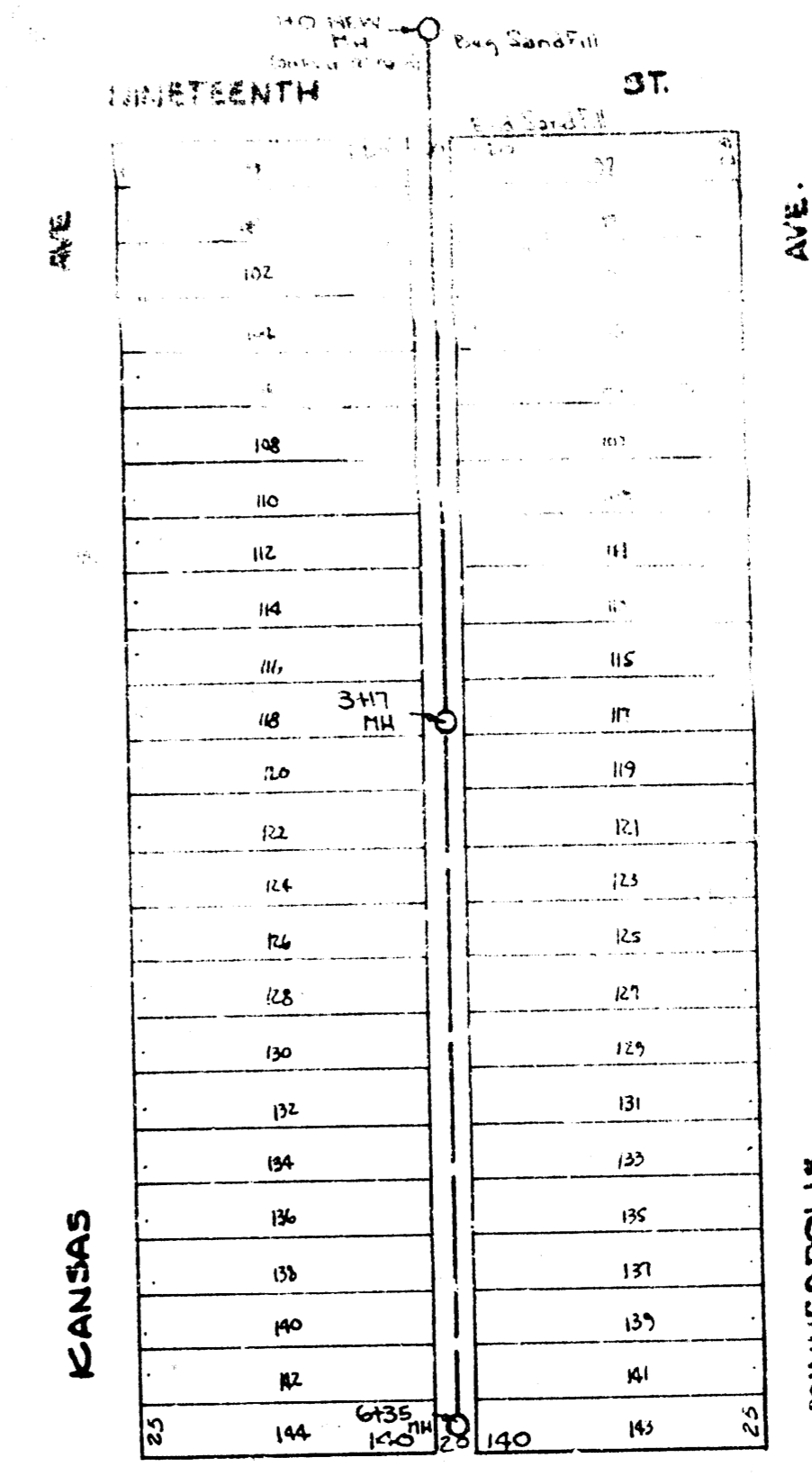
LAT. 10, DIST. AS, SS# 12

Bk. 79.25 "G" in Guide So. End. N. 46. Spruce & Funston



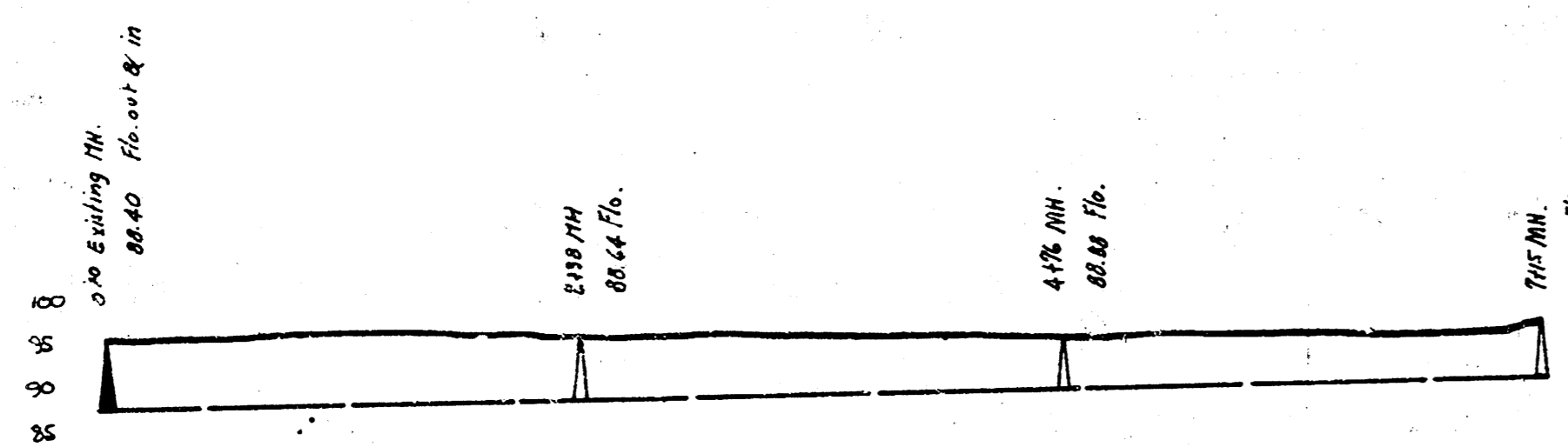
LAT. 12, DIST. E, SS# 12

Bk. 12.11 No. 2 in 114 in Eleventh Street.

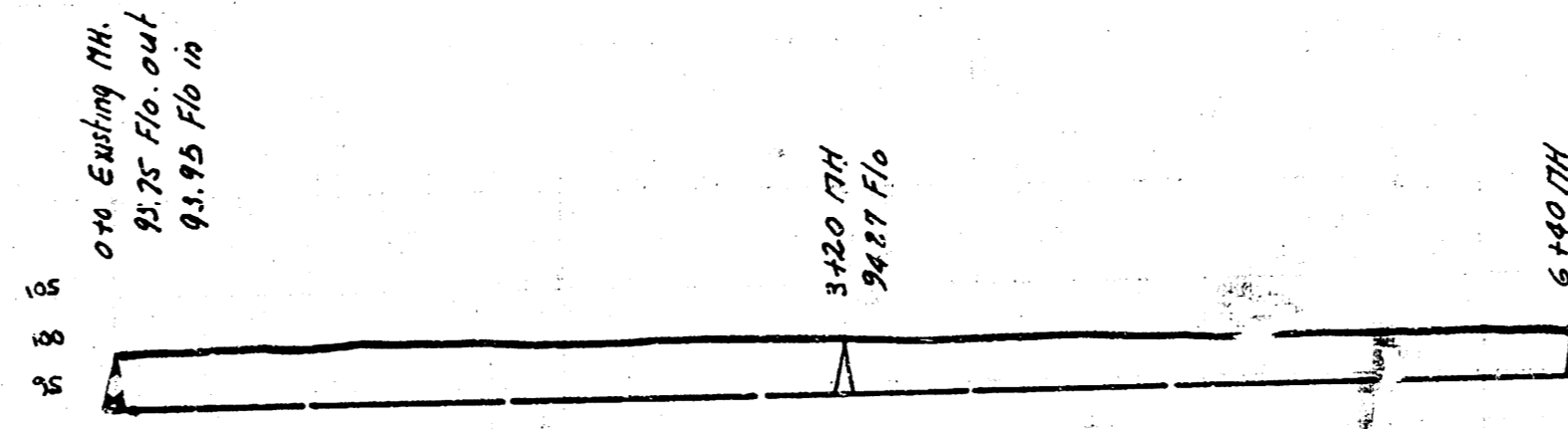


LAT. 17, DIST. T, SS# 12

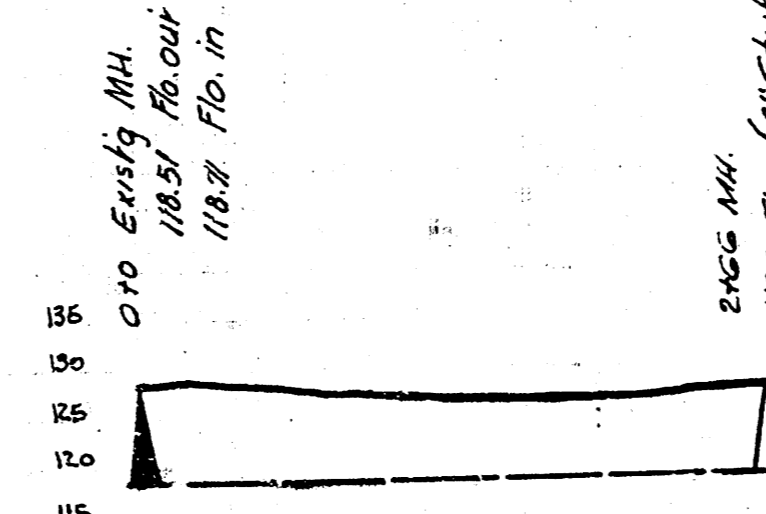
Bk. 120.23 No. 7 in of So. Spruce 1914 Hydraulic



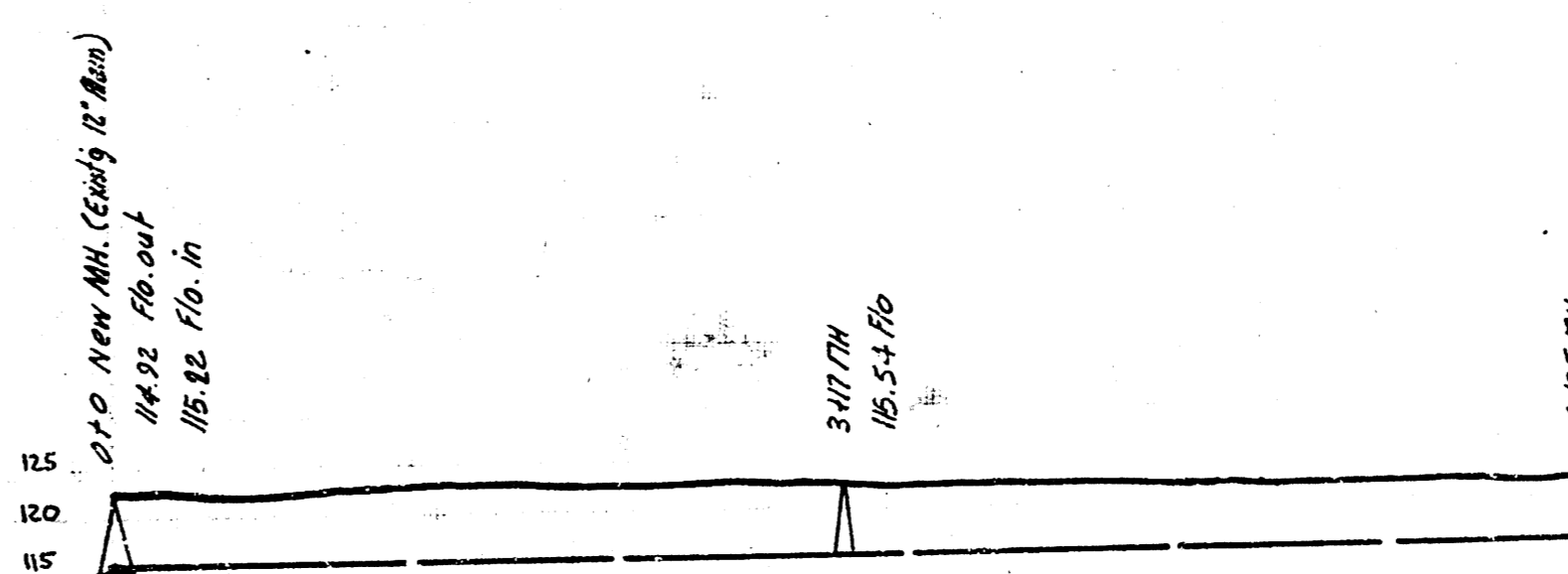
LAT. 14, DIST. R, SS# 20



LAT. 10, DIST. AS, SS# 12



LAT. 12, DIST. E, SS# 12



LAT. 17, DIST. T, SS# 12

LAT. 14, DIST. R, SS# 20 — LAT. 10, DIST. AS, SS# 12
 LAT. 12, DIST. E, SS# 12 — LAT. 17, DIST. T, SS# 12
 CITY OF WICHITA, KANSAS
 L.K. WHITE - CITY ENGINEER
 1949