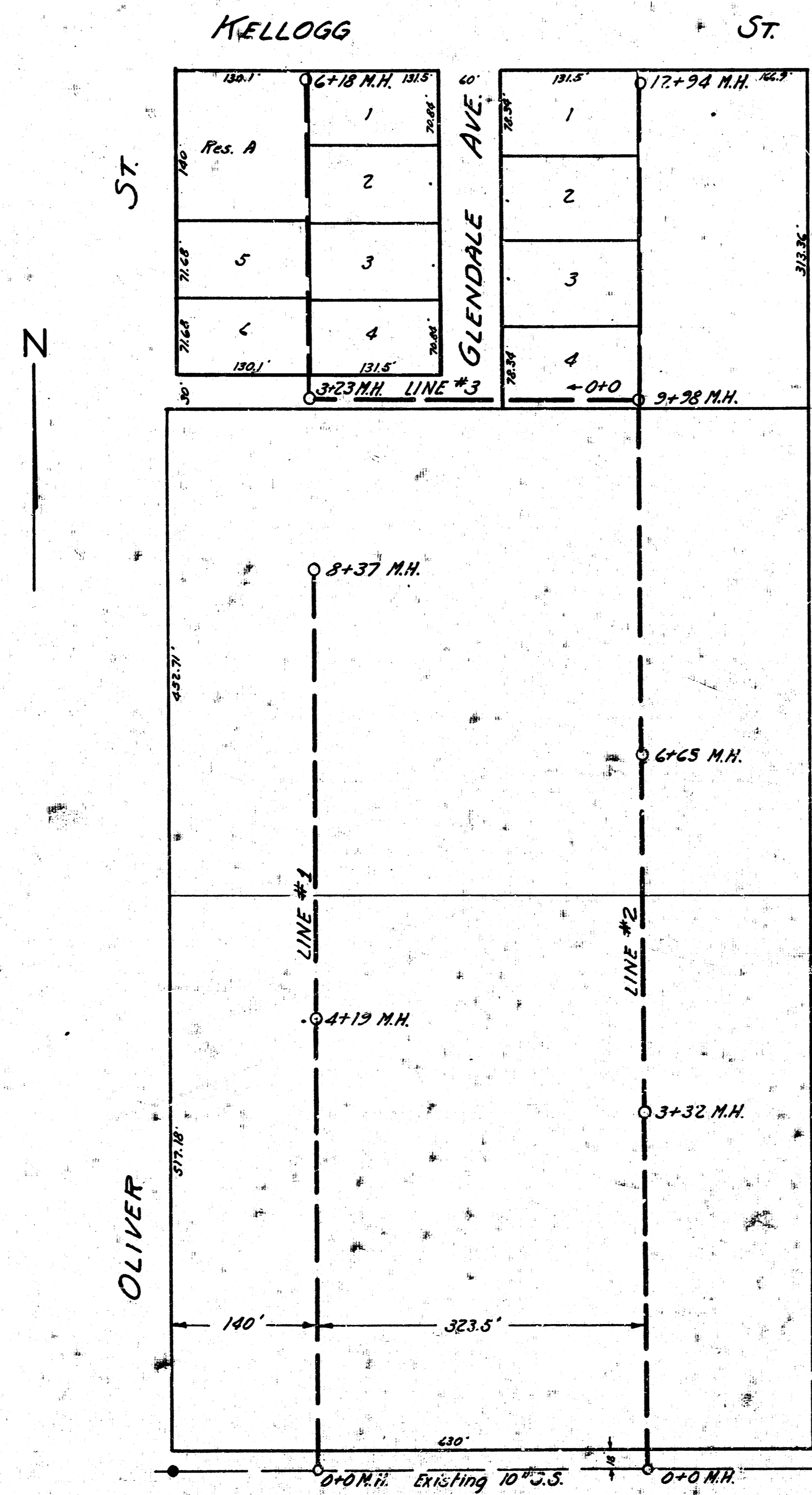
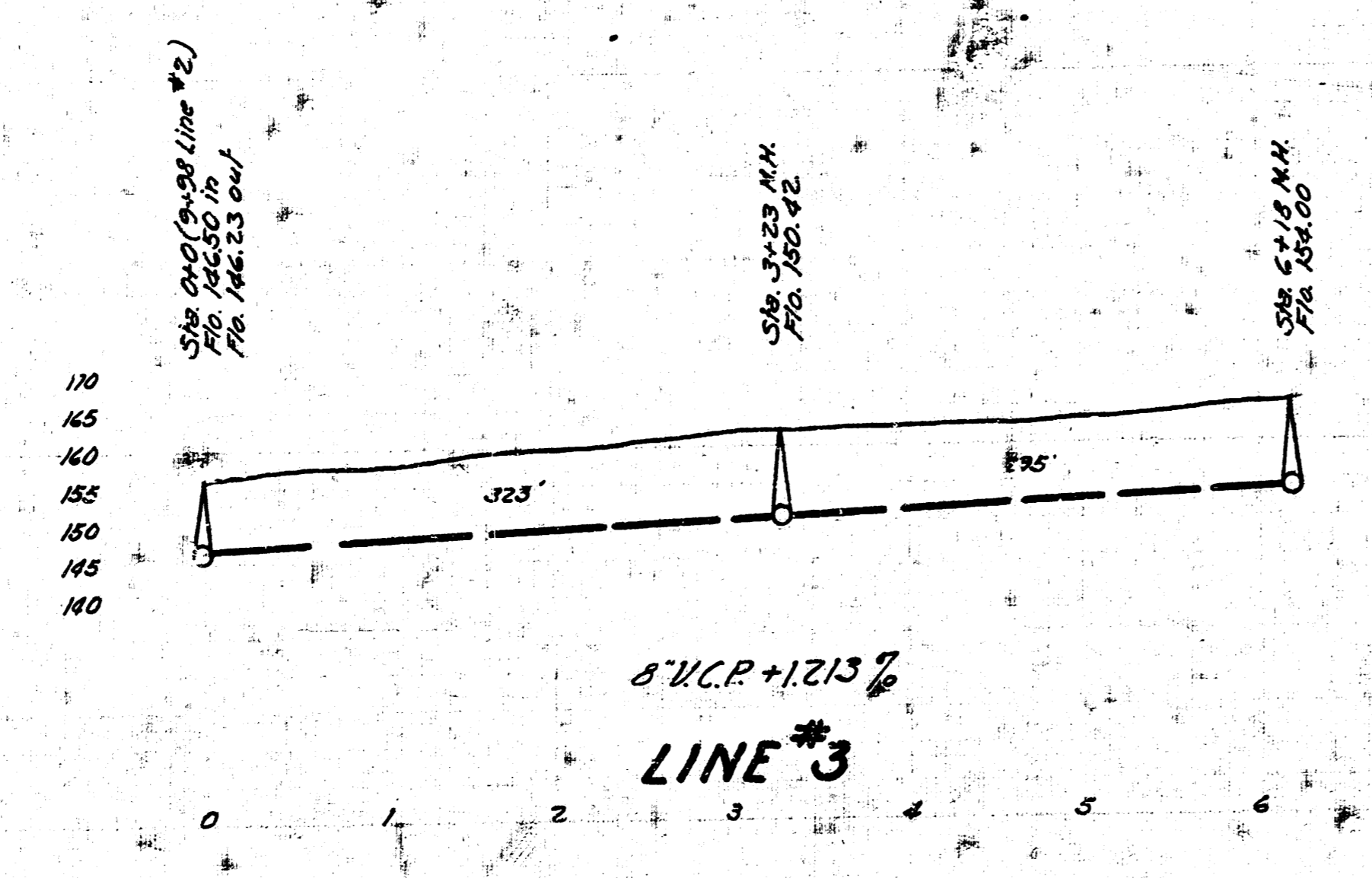
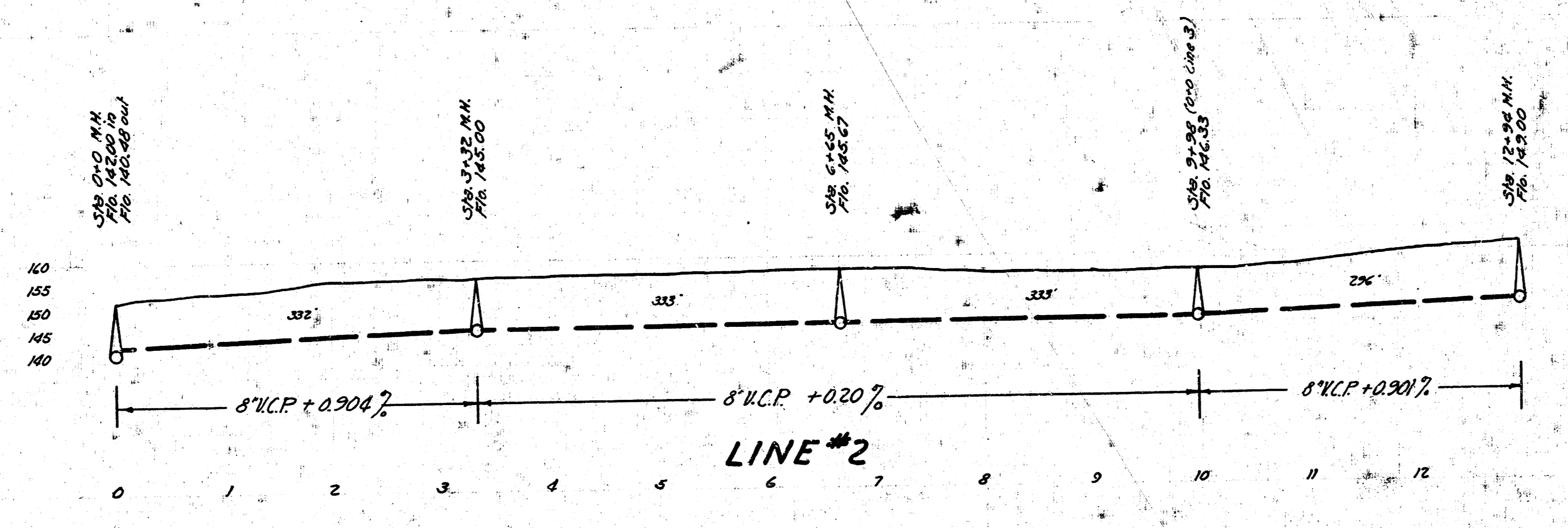
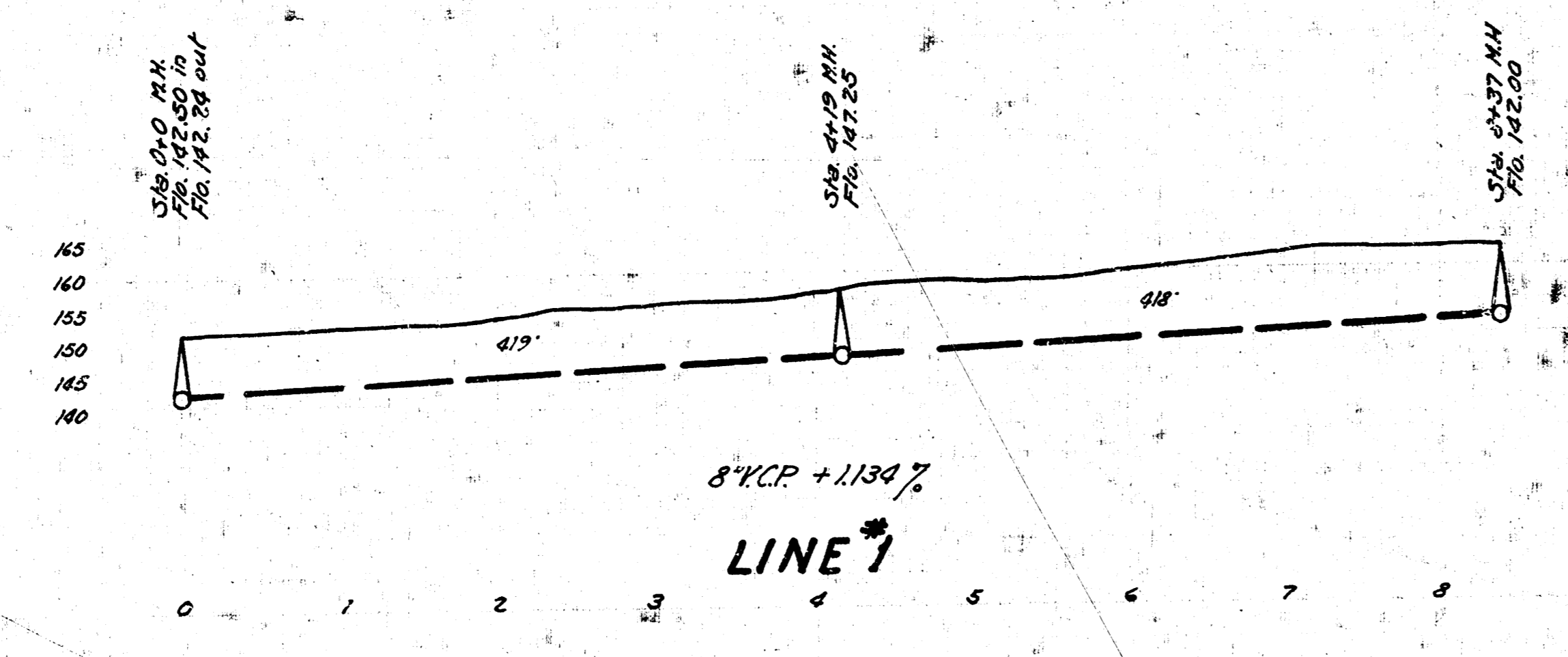


# LAT. 3. DRYCREEK SUBMAIN S.S. #12



ENGINEERING DEPARTMENT  
 CITY OF WICHITA, KANSAS  
 P.L. BROCKWAY CITY ENGINEER  
 B.E. SMITH ENGINEER OF DESIGN  
 MAY 1942 SCALE 1"=80'

LAT. 8 DRYCREEK SUBMAIN S.S.#12  
WICHITA, KANSAS



B.M. Elev. 143.25 Std. N.M. cor. Oliver & Kellogg St.  
154.46 E. rim of N.M. on 10' S.S. 18' 30" and 30' East  
of S.W. cor. of NW 1/4 NW 1/4 Sec. 25

2022