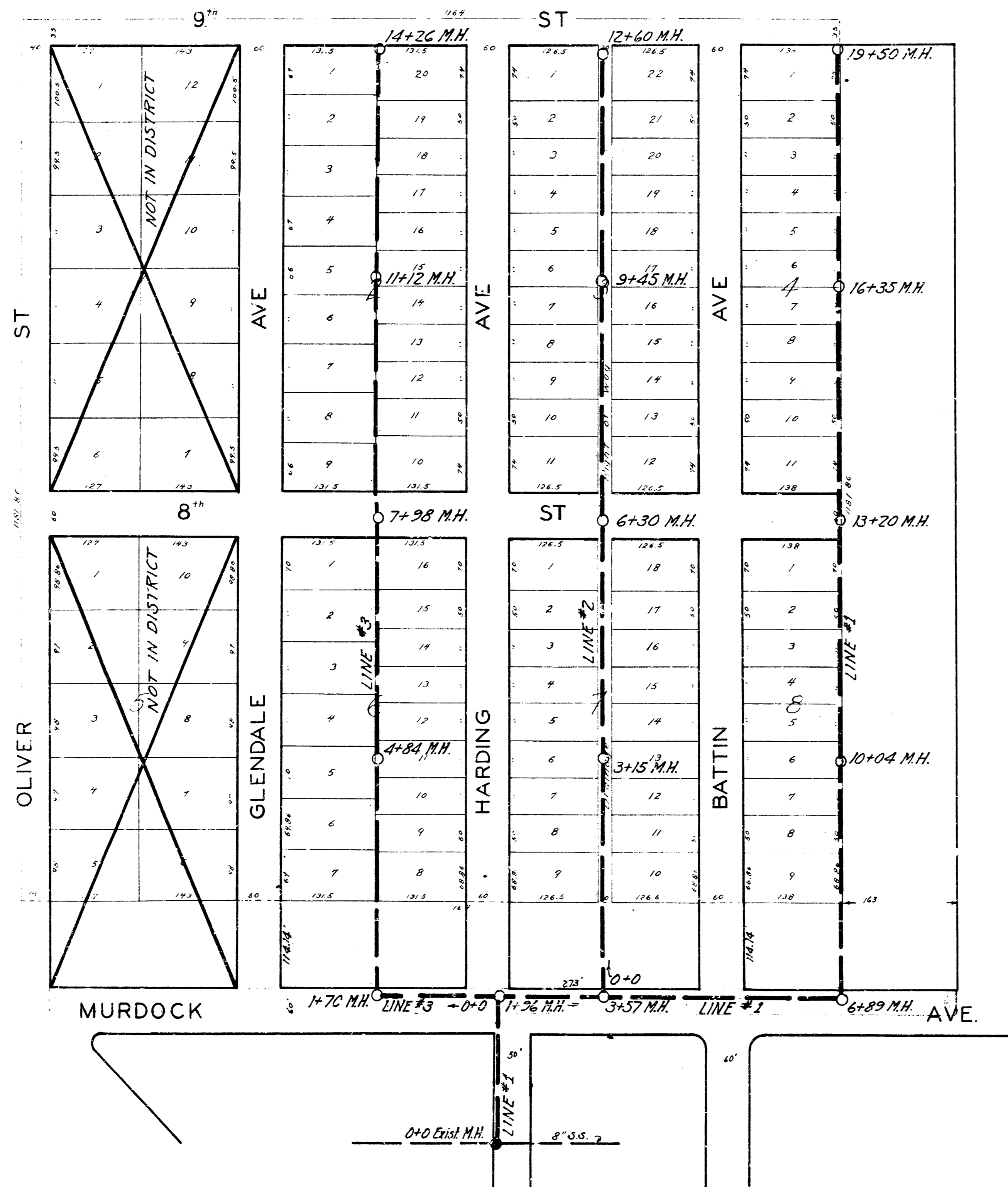


LAT. 10, DRY CREEK SUBMAIN
 SANITARY SEWER #12

B.M. Elev 181.69 Step bench on pole 150' west of O+O Line #1

LAT. 10 DRY CREEK SUBMAIN SANITARY SEWER #12



ENGINEERING DEPARTMENT
CITY OF WICHITA, KANSAS
P.L. BROCKWAY CITY ENGINEER
B.E. SMITH ENGINEER OF DESIGN
MAY 1942 SCALE 1"=100'