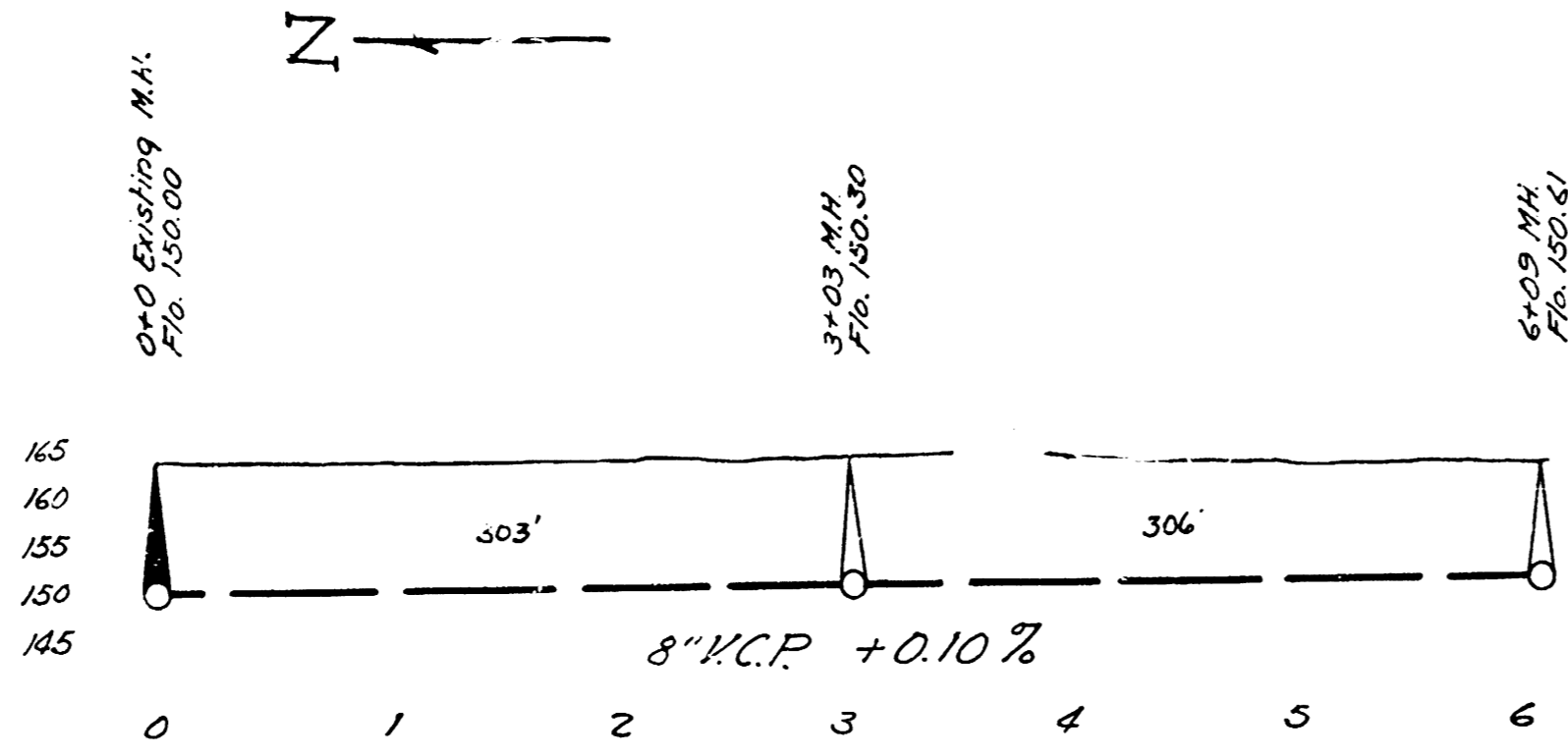


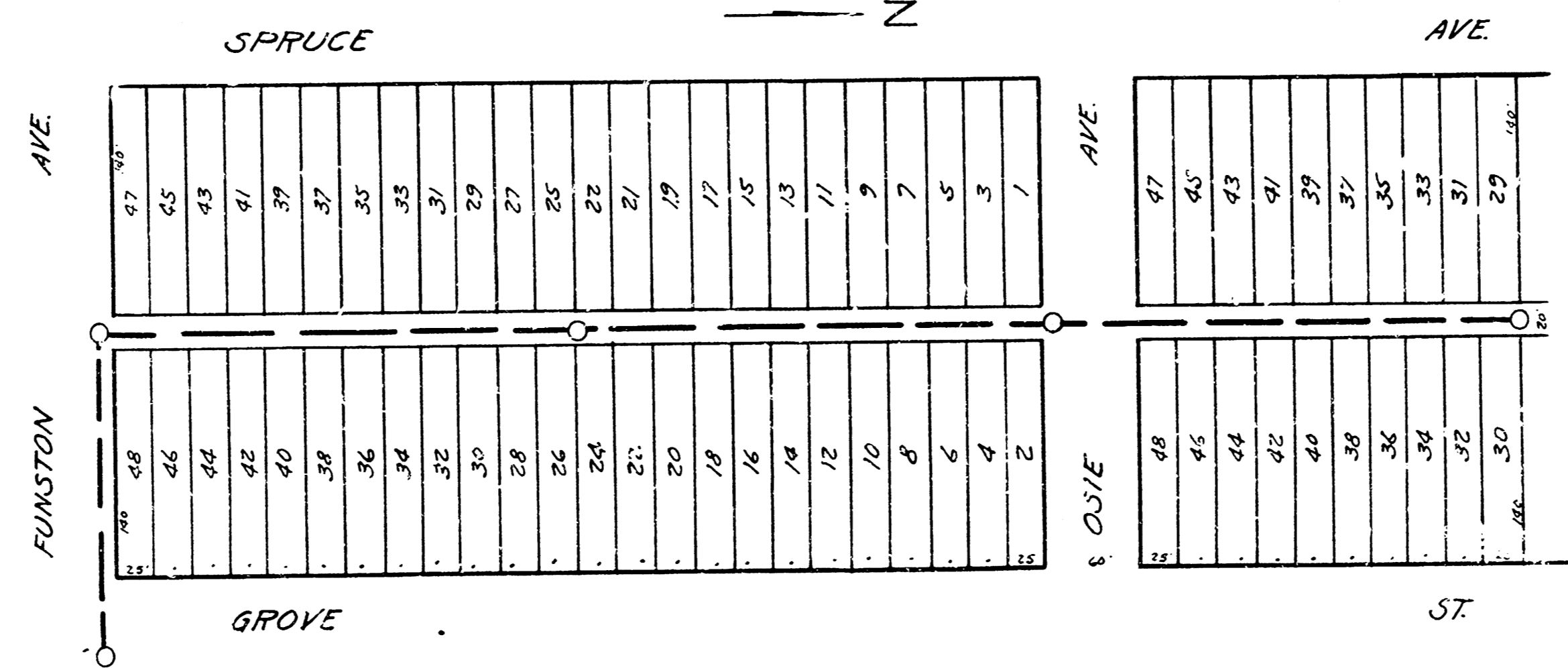
LAT. 12
 DRY CREEK SUBMAIN
 SAN. SEWER #12



B.M. Elev. 164.25. Slip Bench in C' elm S.S. Gilbert, 12' West of E alley bet. Crestway & Terrace Drive.

ENGINEERING DEPARTMENT
 CITY OF WICHITA, KANSAS
 P.L. BROCKWAY CITY ENGINEER
 B.E. SMITH ENGINEER OF DESIGN
 MAY 1942 SCALE 1"=80'

LAT. 1, DIST. A.S., S.S. #12



B.M. Elev. 100.30 N.E. cor. of hub guard on N.S. conc. culvert 25' E. of E of Grove on E Funston

