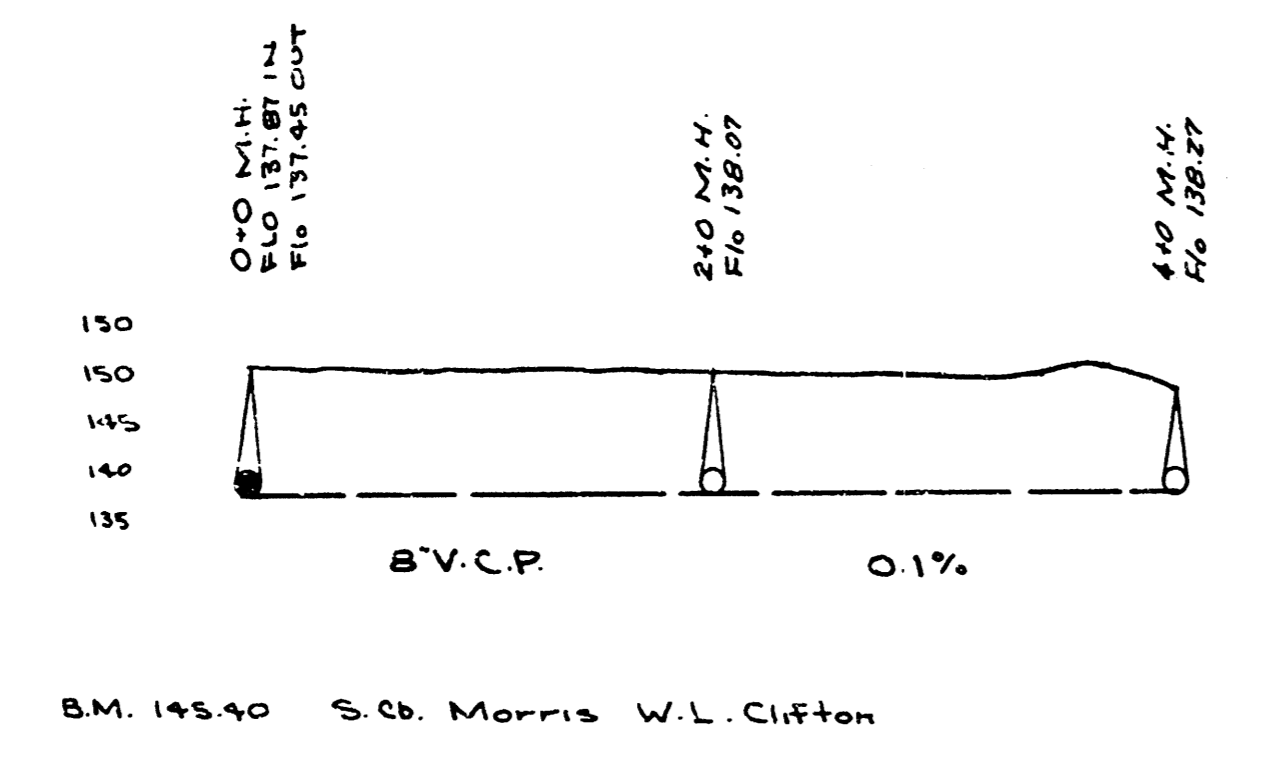
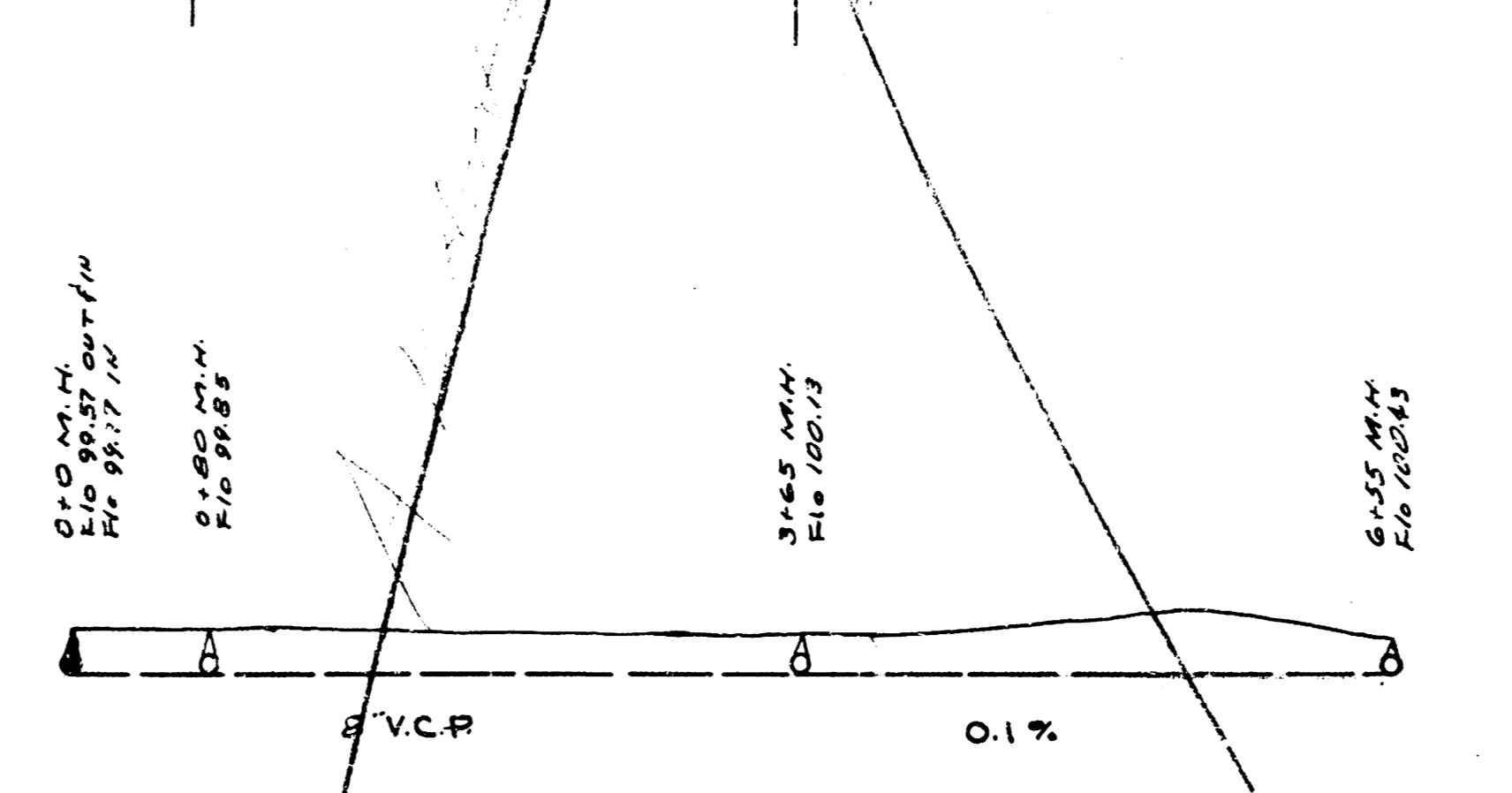
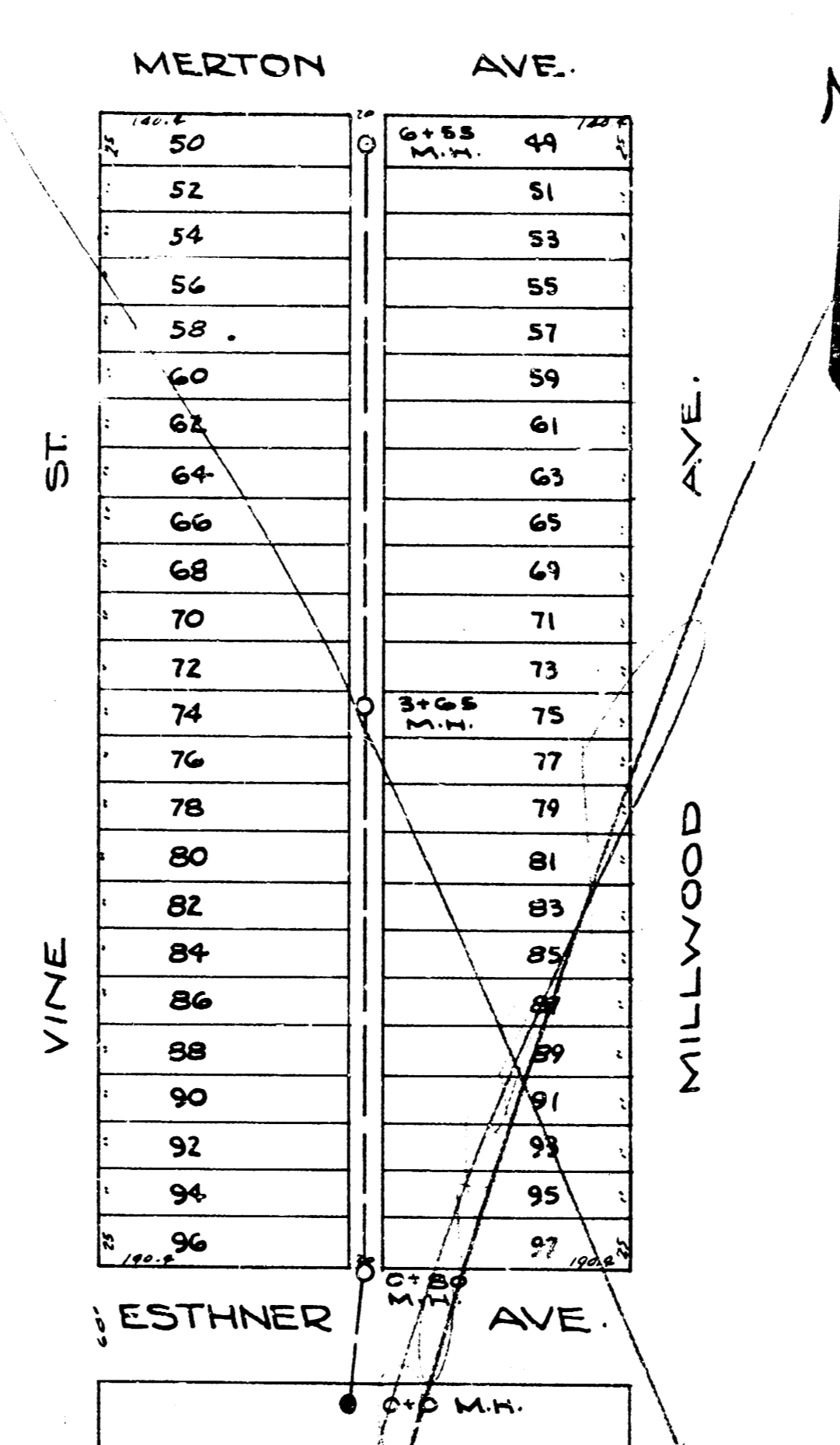


LAT. 10, DIST. G, S.S.#12

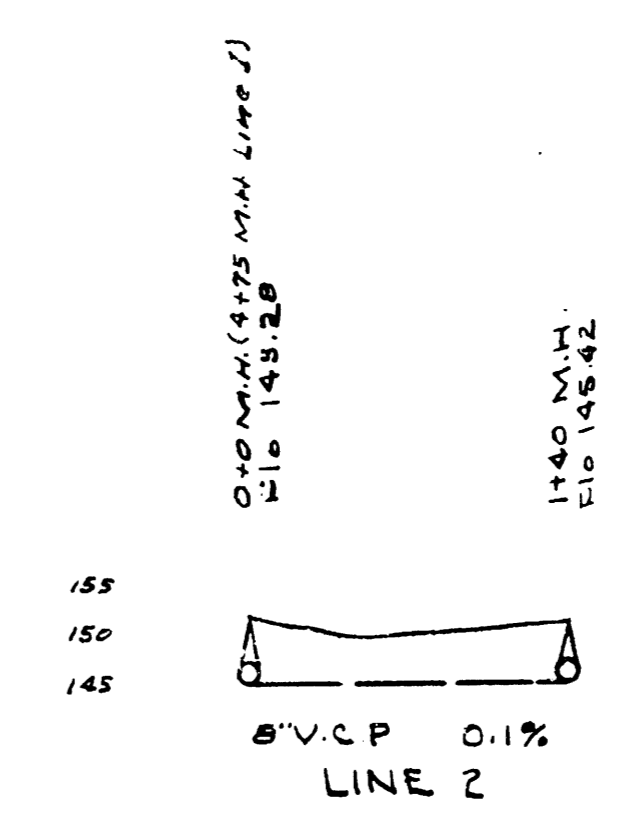
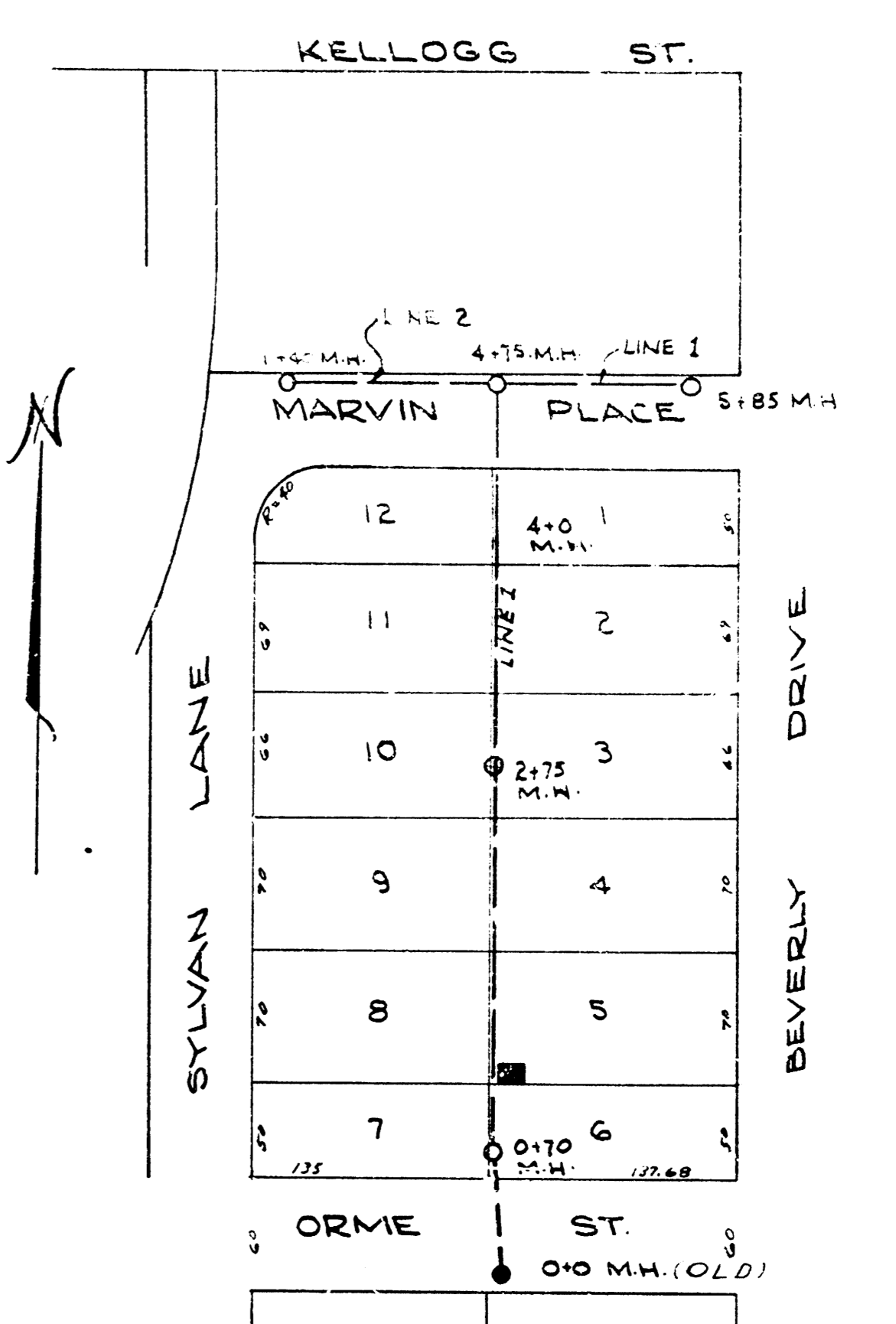


B.M. 145.40 S.C. Morris W.L. Clifton



B.M. 104.39 6" in Globe E. Alley R.R. S.E. Esthner
B.M. 106.19 Step Bench in Cor. Fence past N.E. Cor. Vine & Merton

LAT. G, DIST. E, S.S.#22



B.M. 153.23 Step bench S.S. P. Paig. S.W. Cor. Sylvan Lane & Corne
B.M. 154.23 S. End Co. Ret. S.S. Kellogg & W.S. Beverly Dr.

LAT. 23, DRY CREEK SUB, S.S.#12

DEPARTMENT OF SERVICE
CITY OF WICHITA, KANSAS
ENGINEERING DIVISION
L.K. WHITE - CITY ENGINEER
SANITARY SEWER
Scale: 1" = 80' MARCH 1947
LAT. 10, DIST. G, S.S.#12
LAT. G, DIST. E, S.S.#22
LAT. 23, D.C.S. S.S.#12