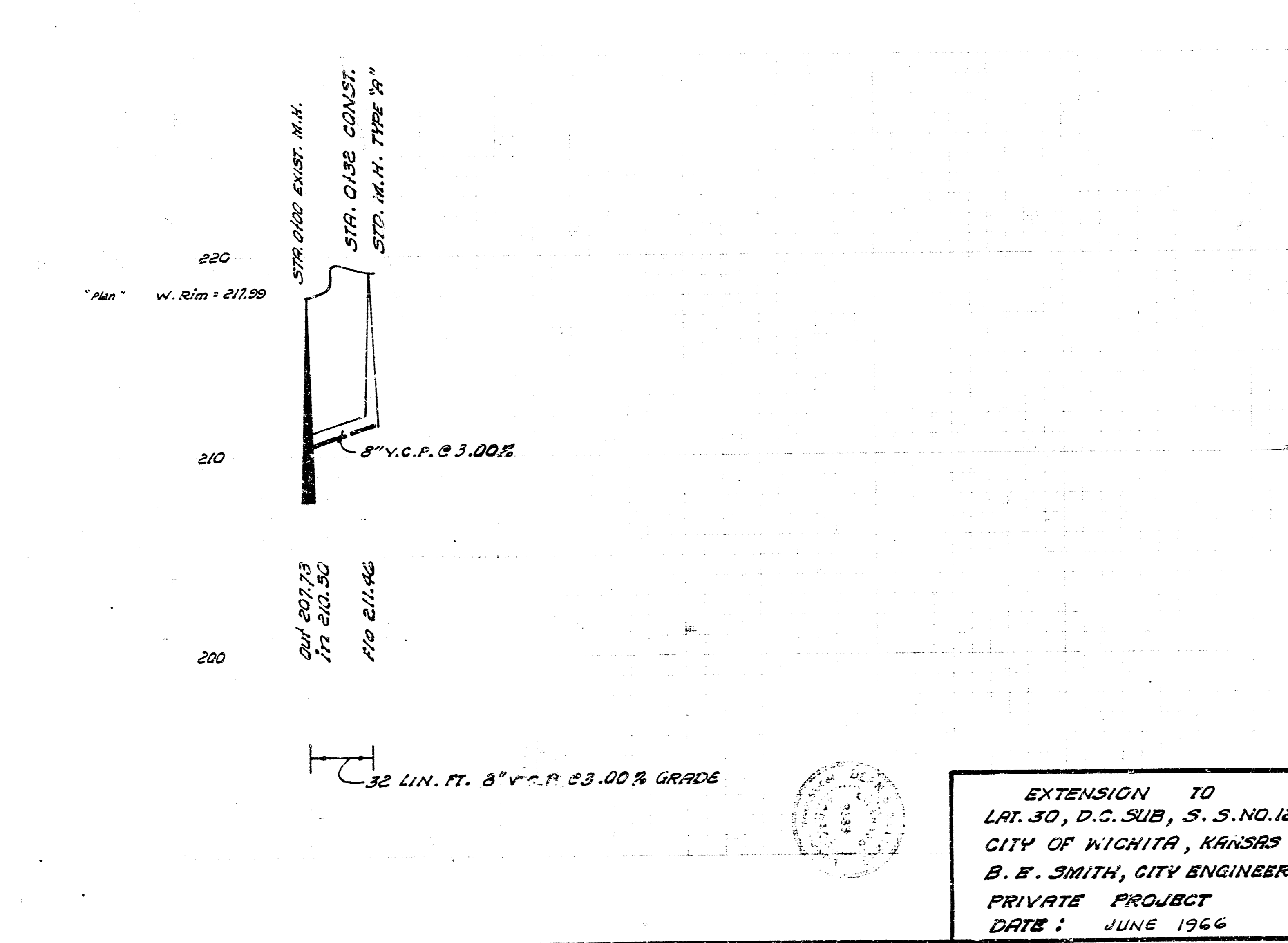
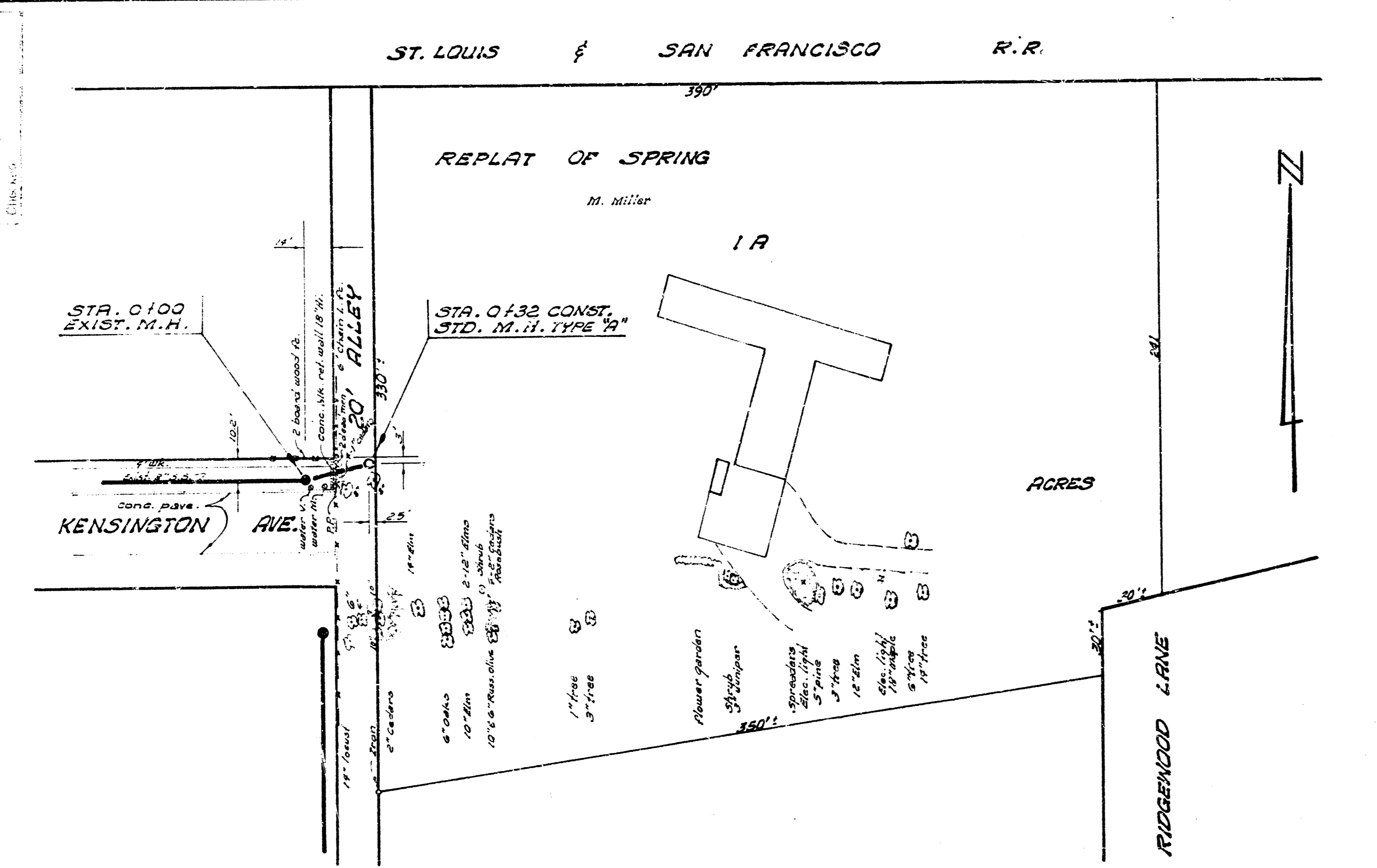
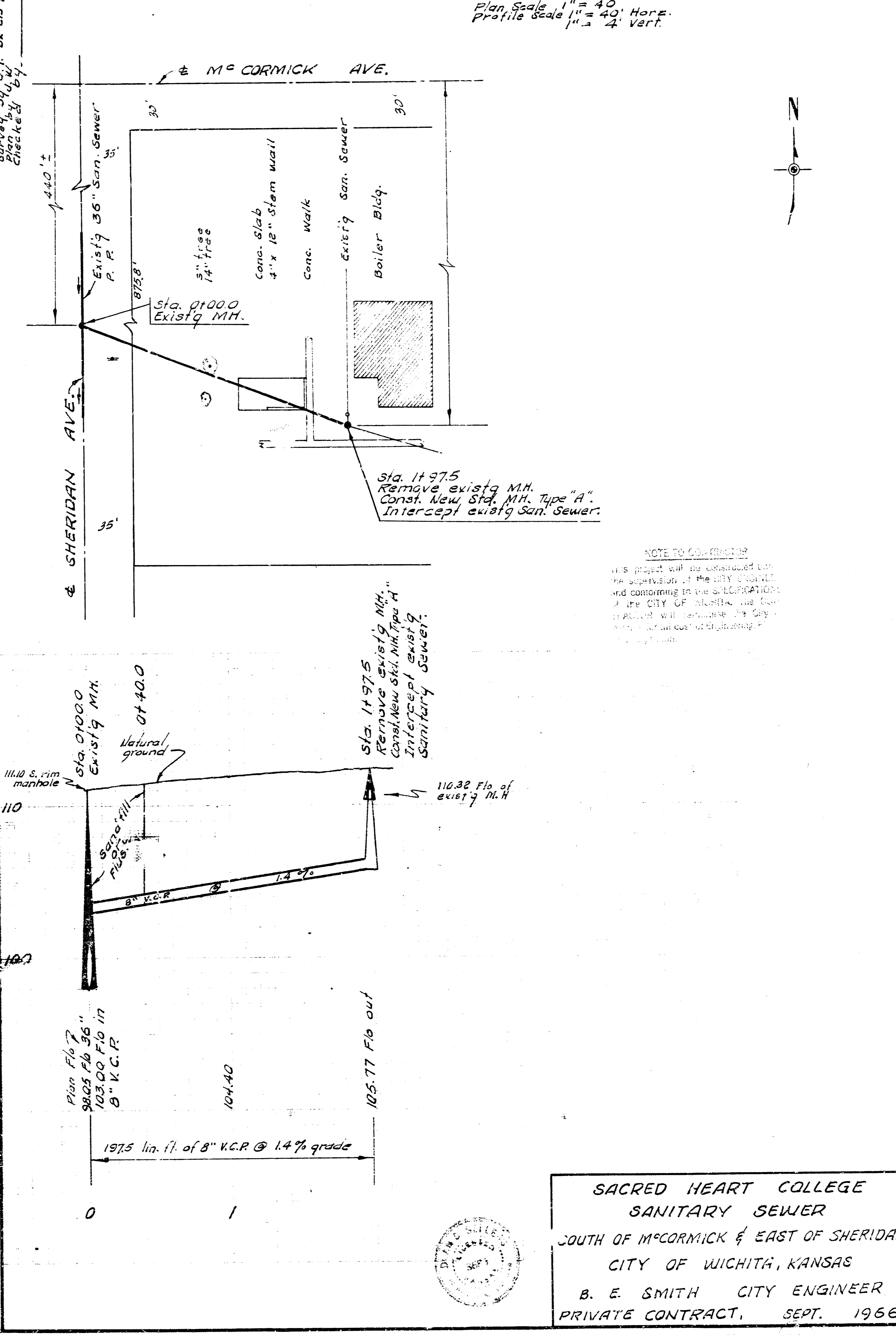


By: G. Young, Jr., Engineer
 Checked by: Z. Chittam
 Date: 6/1/66



EXTENSION TO
 LAT. 30, D.C. SUB, S. S. NO. 12
 CITY OF WICHITA, KANSAS
 B. E. SMITH, CITY ENGINEER
 PRIVATE PROJECT
 DATE: JUNE 1966



SACRED HEART COLLEGE
 SANITARY SEWER
 SOUTH OF MCCORMICK & EAST OF SHERIDAN
 CITY OF WICHITA, KANSAS
 B. E. SMITH CITY ENGINEER
 PRIVATE CONTRACT, SEPT. 1966