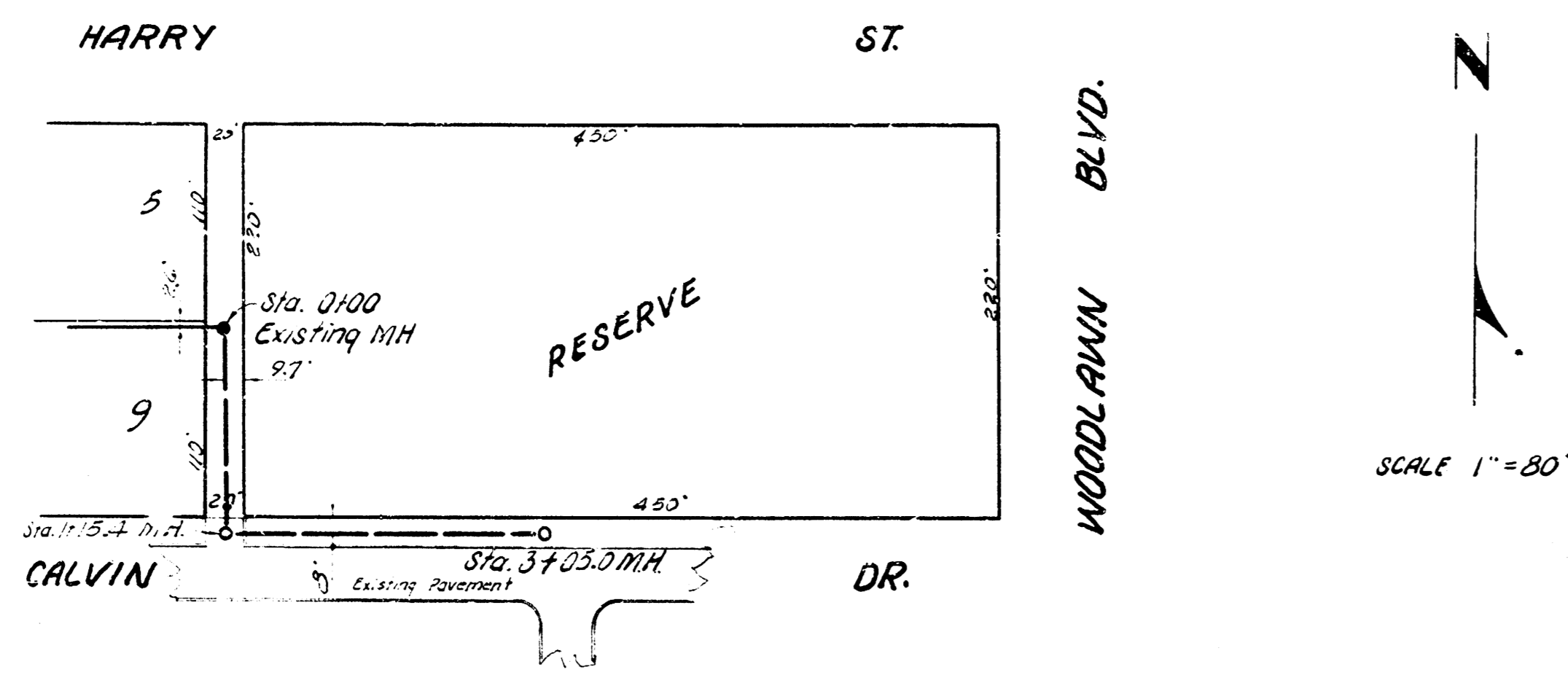
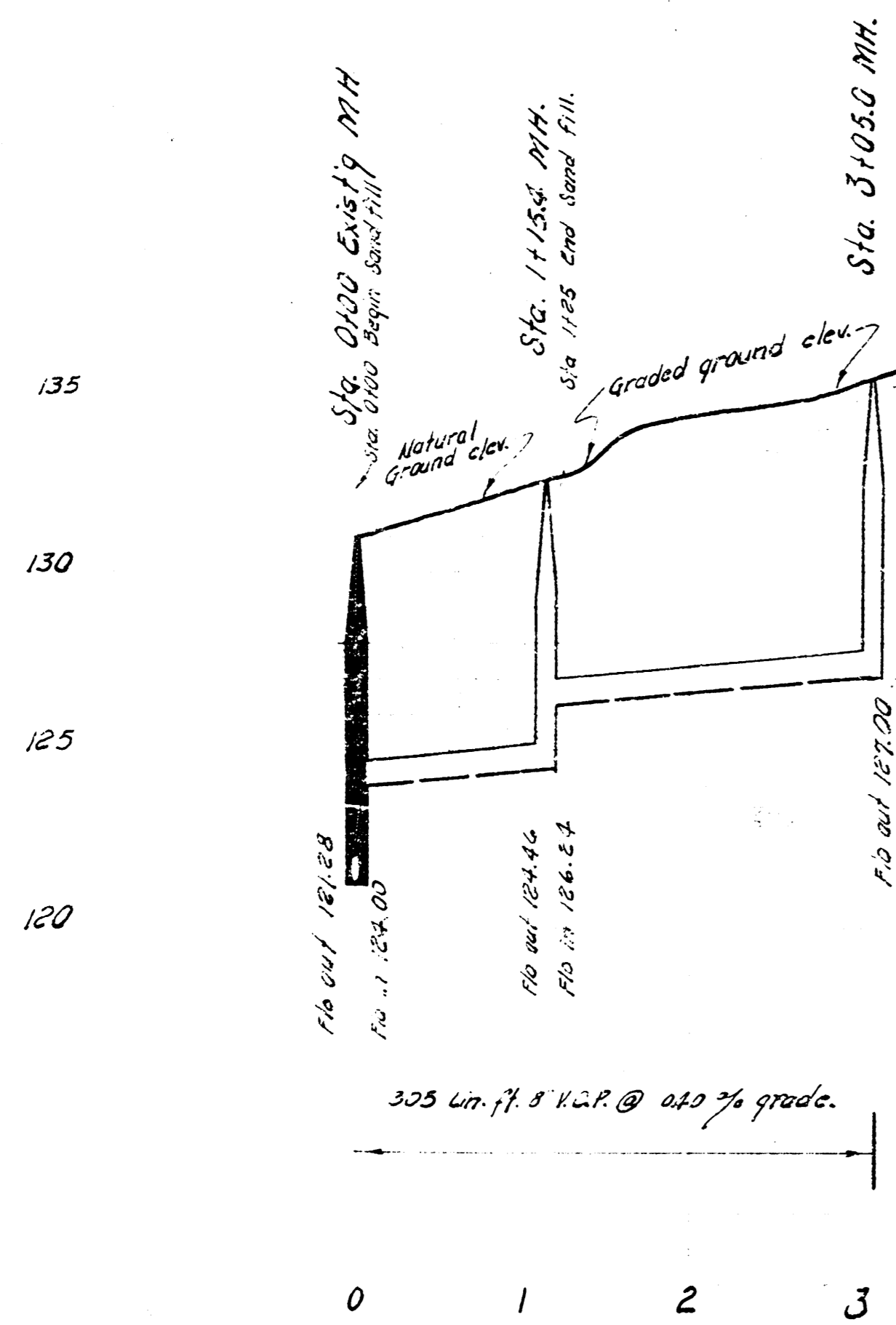


RESERVE in PURCELL'S 8TH ADDITION

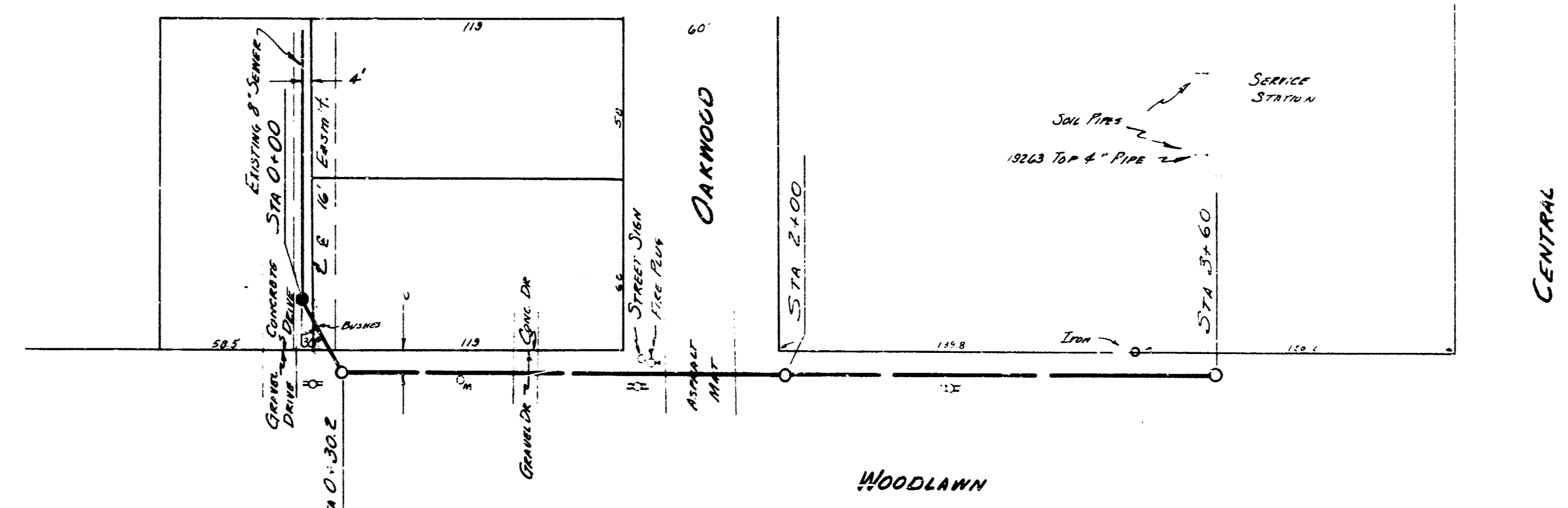


B.M. 133.92 SW cor. so. hwy guard conc. box culvert Fabrique of Harry.

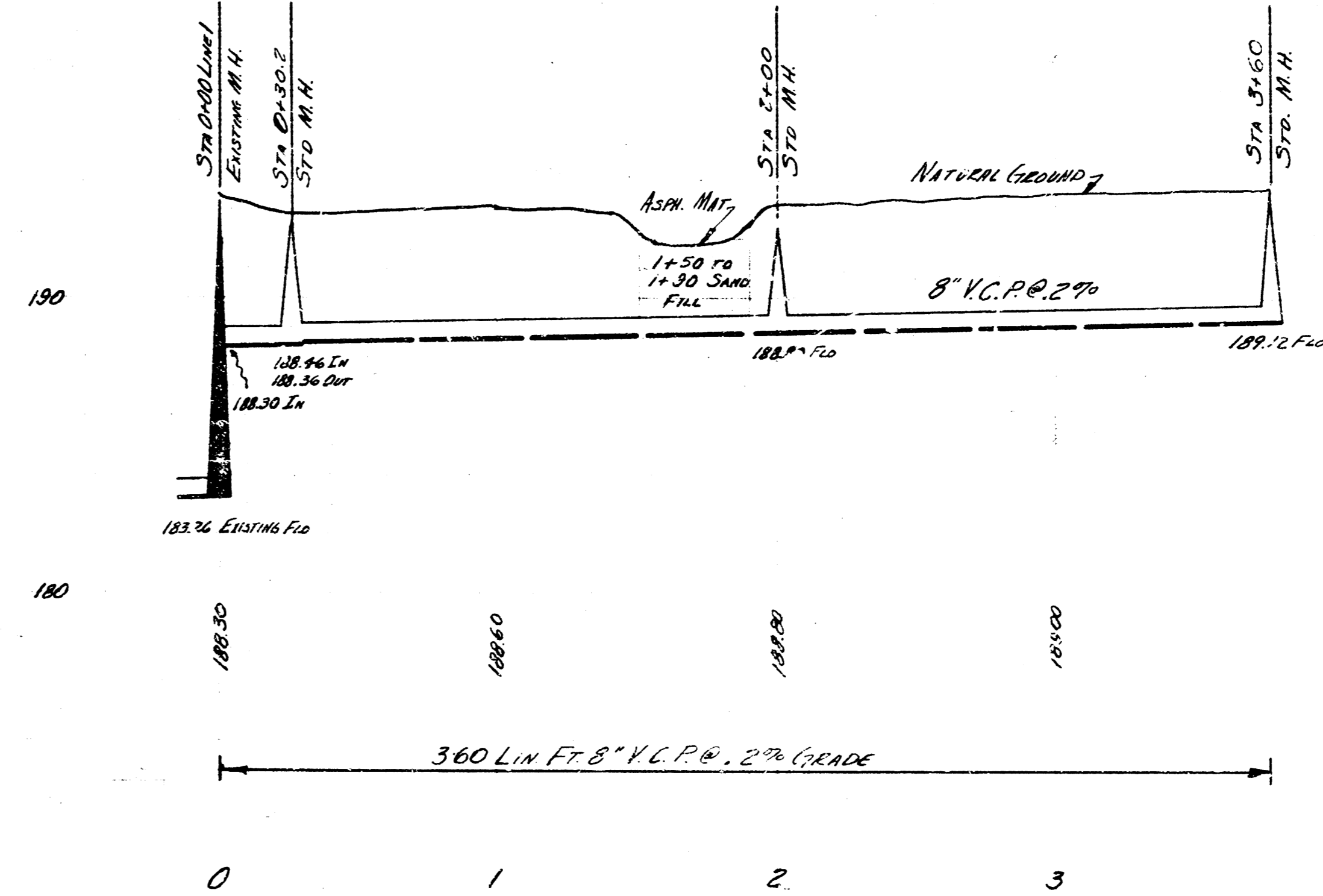


EXT. LAT. 7, SUBMAIN 2, W. I. S.  
CITY OF WICHITA, KANSAS  
B. E. SMITH CITY ENGINEER  
PRIVATE CONTRACT  
APRIL 1955

PLAN SCALE 1" = 40'  
PROFILE SCALE 1" = 40' HOR. 1" = 4' VERTICAL



Station Engineer: W. E. S. J. F. S.  
Checked: C. J. S. J. F. S.  
Date: April 1955  
B.M. 133.23 Head "B" Stone SW cor. P.D. SW cor. Macdonald Central.



EXT. LAT. 47 D.C.S. SS 12  
CITY OF WICHITA, KANS.  
B. E. SMITH CITY ENGINEER  
APRIL 1955 PRIVATE JOB