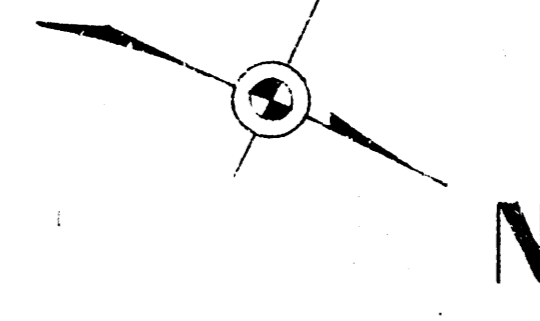
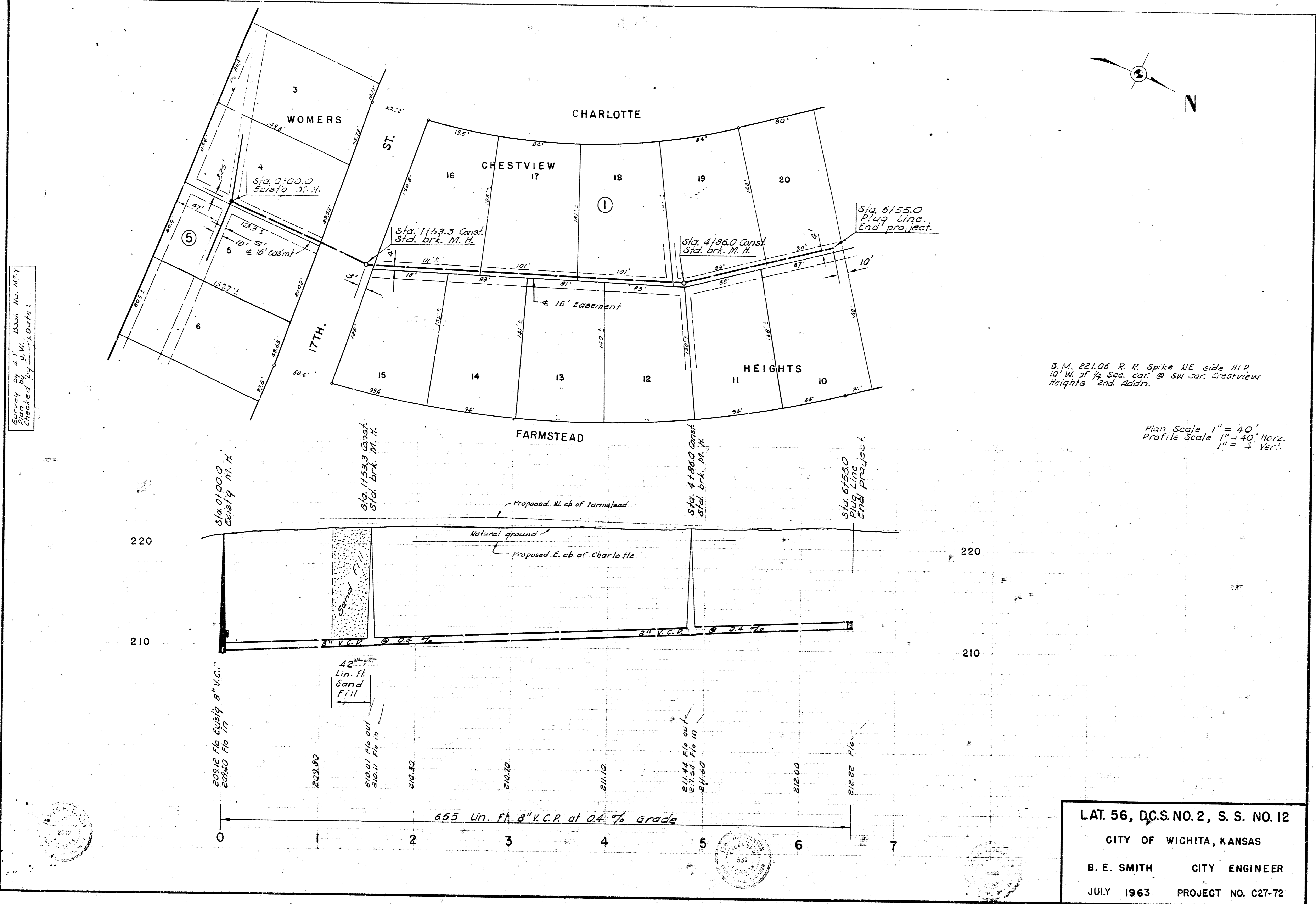


Survey by A. J. W. Book No. 187  
Checked by \_\_\_\_\_ Date: \_\_\_\_\_



B.M. 221.06 R. R. Spike NE side HLP  
10' W. of 1/4 Sec. cor. @ SW cor. Crestview  
Heights 2nd Addr.

Plan Scale 1" = 40'  
Profile Scale 1" = 40' Horiz.  
1" = 4' Vert.

LAT. 56, D.C.S. NO. 2, S. S. NO. 12  
CITY OF WICHITA, KANSAS  
B. E. SMITH CITY ENGINEER  
JULY 1963 PROJECT NO. C27-72